

THIS DRAWING has been prepared by the Architect, or prepared under his direct supervision as an instrument of service and is intended for use only on this project. All drawings, specifications, notes and designs, including the overall layout, form, arrangement, and composition of spaces and elements portrayed, constitute the original unpublished work of the Architect. Any reproduction, use, or disclosure of the information contained herein without the written consent of the Architect is strictly prohibited.

THE ARCHITECT DISCLAIMS responsibility for the existing building structure, site conditions, existing construction elements, or any documents, drawings or other instruments used for any part of this Project which do not bear the Architect's seal. The Architect's services are undertaken only in the interest of the Project Owner. No obligation is assumed by the Architect for the benefit of any other entity.

ISOLATED DOCUMENTS: This Drawing is a single component of an integrated set of Construction Documents. General and Supplementary Conditions of the Contract, General Requirements, Specifications and other drawings may affect the Work described. Failure to review and integrate the design intent of the whole of the Construction Documents does not relieve the Contractor from providing a complete Project.

CARRY WITH all laws, codes, ordinances and regulations with authority having jurisdiction and with requirements of the Landlord, if applicable. Do not start Work until all permits and required approvals are obtained. VERIFY ALL CONDITIONS and dimensions prior to construction. Commencement of work constitutes verification and acceptance of all existing conditions. Application of a material or equipment item to Work installed by others constitutes acceptance of that Work, and assumption of responsibility for satisfactory installation.

OWNER'S REVIEW is to final text of a material unless otherwise indicated. CALLBACK & MAKEUP drawings - NO NET SCALE. Drawing scales otherwise stated.

project title

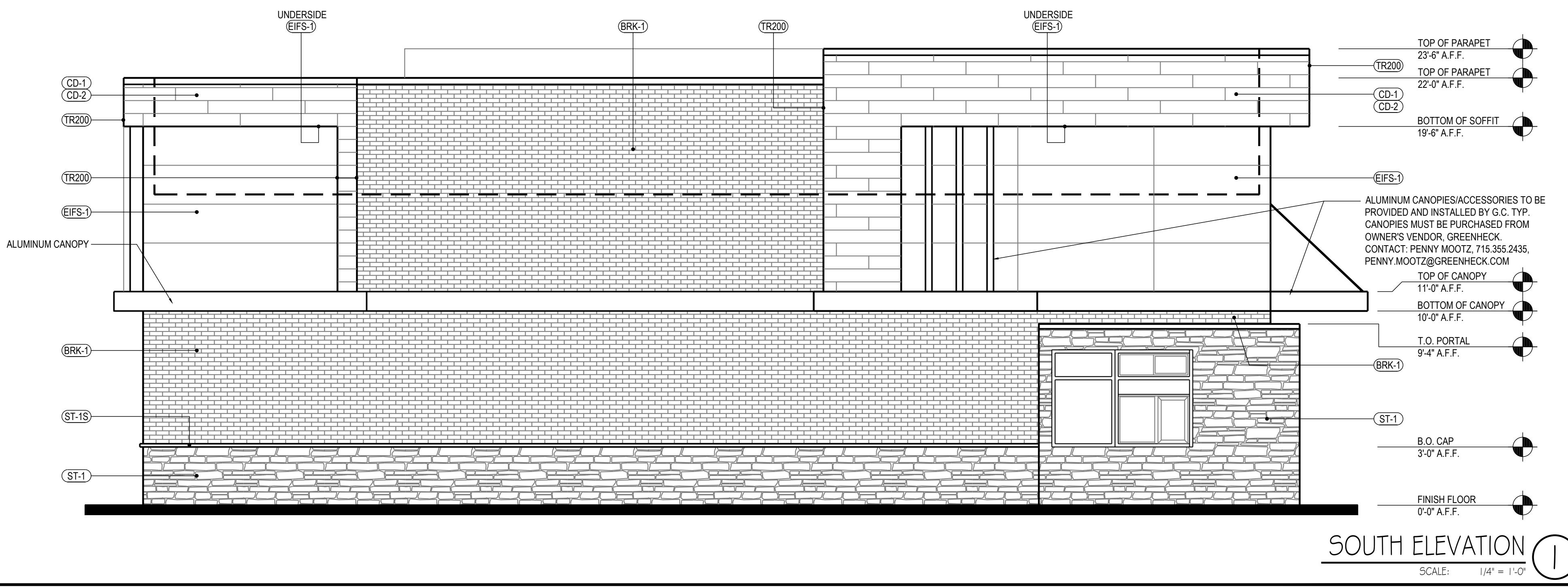
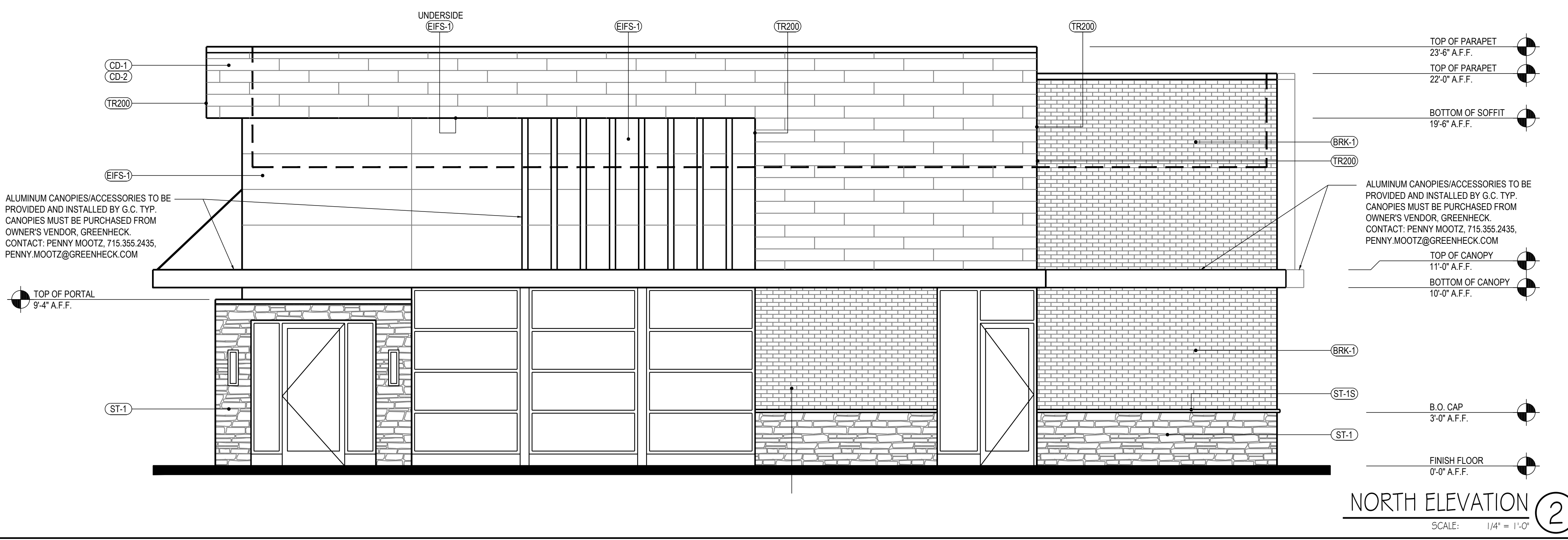
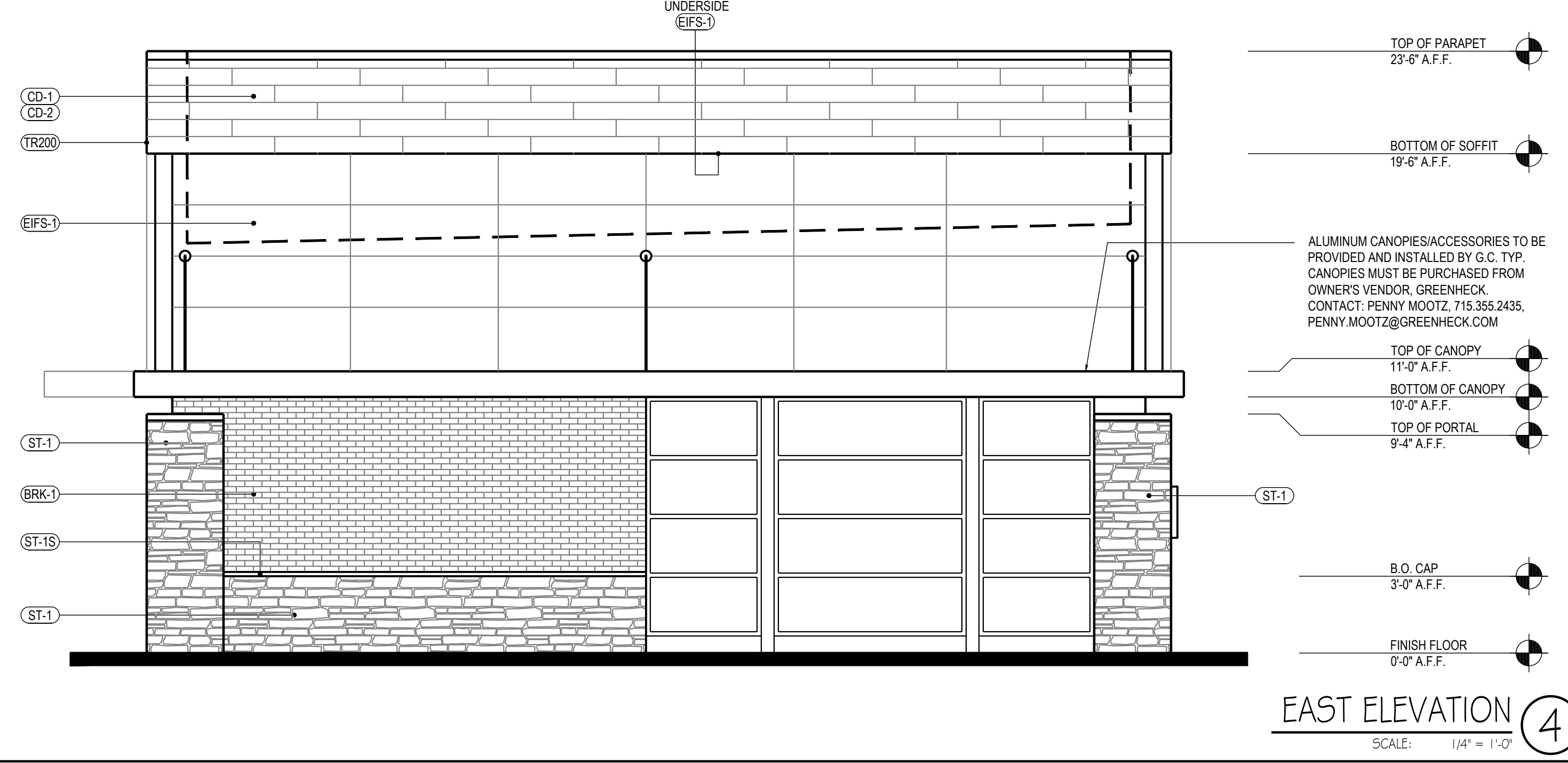
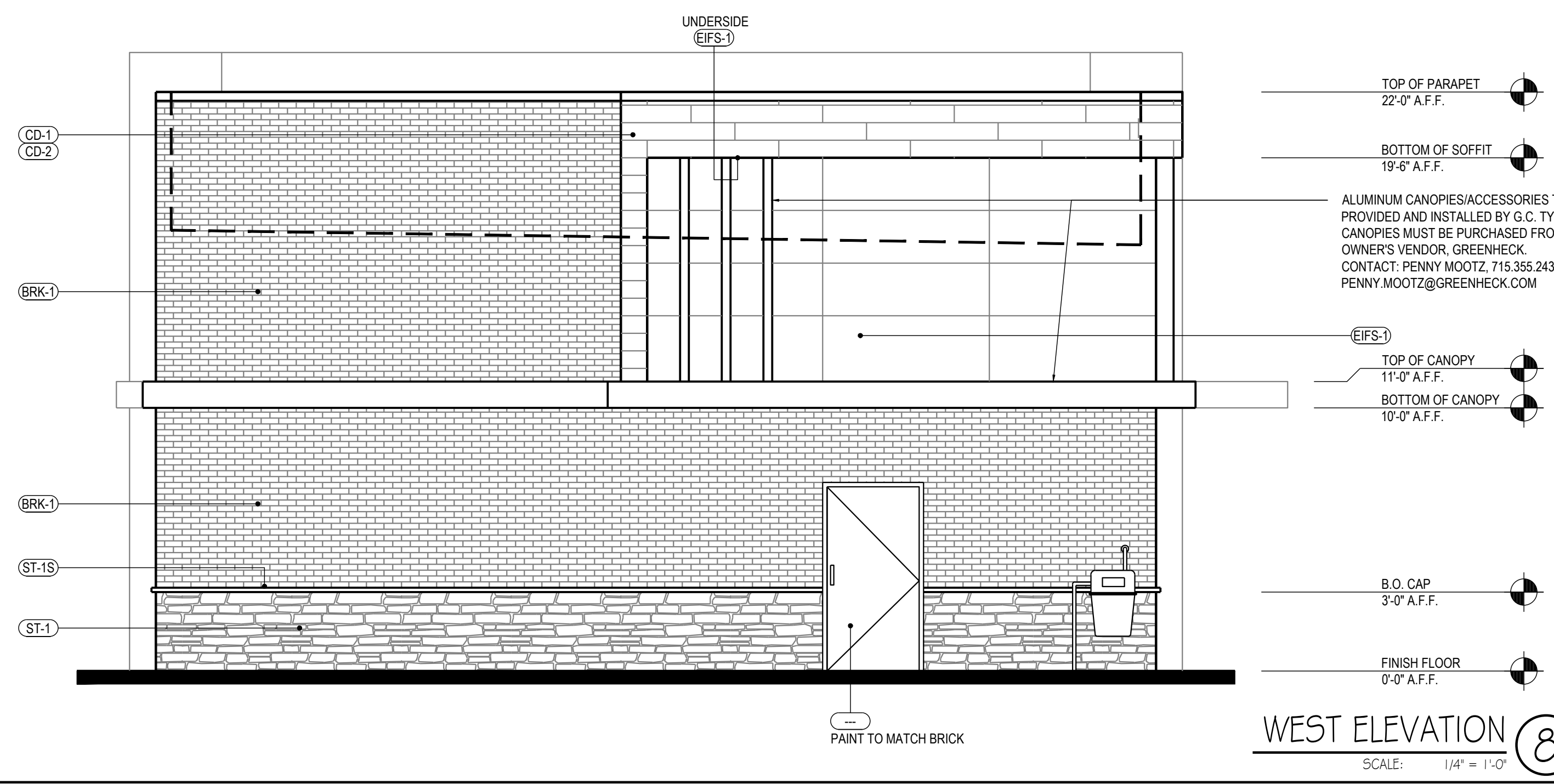
CFT & PANDA
 WAUKESHA
 2720 N GRANDVIEW BLVD
 WAUKESHA, WI 53188

project number
 14045.004
 drawing issuance
 PLANNING REVIEW 05.05.17
 drawing revisions
 No. Description Date:

professionalseal

drawing title
 PRELIMINARY ELEVATIONS

drawing number
A201



EXTERIOR FINISH SCHEDULE					
INSTALLED AND FURNISHED BY G.C. UNLESS NOTED OTHERWISE					
NO	MANUFACTURER	MFG#	COLOR	FINISH	NOTES
(BRK-1)	ACME BRICK	ELGIN PLANT	AMERICANA MODULAR	HERITAGE	BUILDING BODY
(EIFS-1)	STO	STOTHERM ESSENCE SYSTEM	SW 7067 CITYSCAPE	FINE	BUILDING BODY
(CD-1)	FIBERON	HORIZON	IPE	-	60% MATERIAL COVERAGE - RANDOM MIX (NON-GROOVE)
(CD-2)	FIBERON	HORIZON	TUDOR BROWN	-	40% MATERIAL COVERAGE - RANDOM MIX (NON-GROOVE)
(ST-1S)	CORONADO STONE PRODUCTS	900 SERIES	#2 GREY	-	STONE CAP
(ST-1)	CORONADO STONE PRODUCTS	INDUSTRIAL LEDGE	SHALE GREY	-	ENTRY PORTAL & WAINSCOT CONTACT: (EAST COAST) LISA KILGORE: 864-962-1221 (WEST COAST) JEFF PARKER: 949-254-0046
(TR200)	SCHLUTER	RONDEC - R060	AGR	-	OUTSIDE CORNER TRIM FOR EXTERIOR TILE