

---

---

---

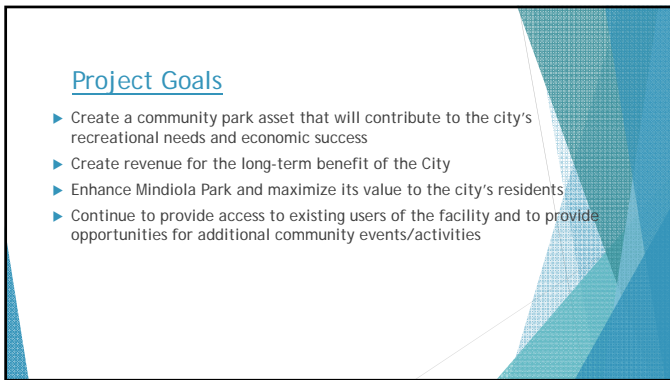
---

---

---

---

---



---

---

---

---

---

---

---

---



---

---

---

---

---

---

---

---

Where are we Today?

- ▶ Mindiola Park proposal basics:
  - ▶ 10-year use agreement, with renewal options
  - ▶ 2,500 fixed seats
  - ▶ Hospitality space
  - ▶ Digital outfield fence
  - ▶ Indoor Restrooms
  - ▶ Concession Space
  - ▶ Small Retail/Office Space
  - ▶ Full Turf Playing Field
  - ▶ Grass Berm, Dugouts, Fencing and Press Box

---

---

---

---

---

---

---

---

Where are we Today?

- ▶ Mindiola Park proposal basics:
  - ▶ Big Top Baseball would host up to 40 Baseball Games per year
  - ▶ Host soccer games (minor league, collegiate, or similar level of professional or amateur soccer)
  - ▶ Include responsible Alcohol serving plan
  - ▶ Includes scheduling meetings with User Groups
  - ▶ Includes a requirement for a comprehensive Parking Plan

---

---

---

---

---

---

---

---

Where are we Today?

- ▶ Mindiola Park proposal basics:
  - ▶ Carroll University, Waukesha North High School and Waukesha South High School would play at the facility

---

---

---

---

---

---

---

---

Where are we Today?

- ▶ No General Fund Tax Dollars are going into the stadium enhancement project
- ▶ Create non-tax dollars for the maintenance and improvement of our parks

---

---

---

---

---

---

---

---

Financing Plan

- Amend boundary of TIF 14 and use approximately \$12 Million in infrastructure and project costs
- Transfer property to Big Top Baseball as a taxable asset
- Big Top Baseball would pay a tax increment based upon \$12 million in value or \$252,000 per year (Backed by PILOT Agreement)
- Remaining portion of expenditure is funded through TIF 14 increment. (Generates approximately \$1.7 million in increment today)
- Total project costs paid in year 7
- At the retirement of debt, Big Top Waukesha would pay a lease payment for use of the facility

---

---

---

---

---

---

---

---

City Benefits

- Create a multiuse facility for athletic and community events
- Complete development of a community park for the benefit of our community and Parks and Recreation sports programming
- Attract visitors for Northwoods League Baseball and Collegiate/Pro Soccer that support local businesses
- Create a soccer facility that can support regional tournaments, drawing additional visitors to Waukesha that support our local economy
- Provide non-tax revenue to support our Parks system on a long term basis

---

---

---

---

---

---

---

---



---

---

---

---

---

---

---

---