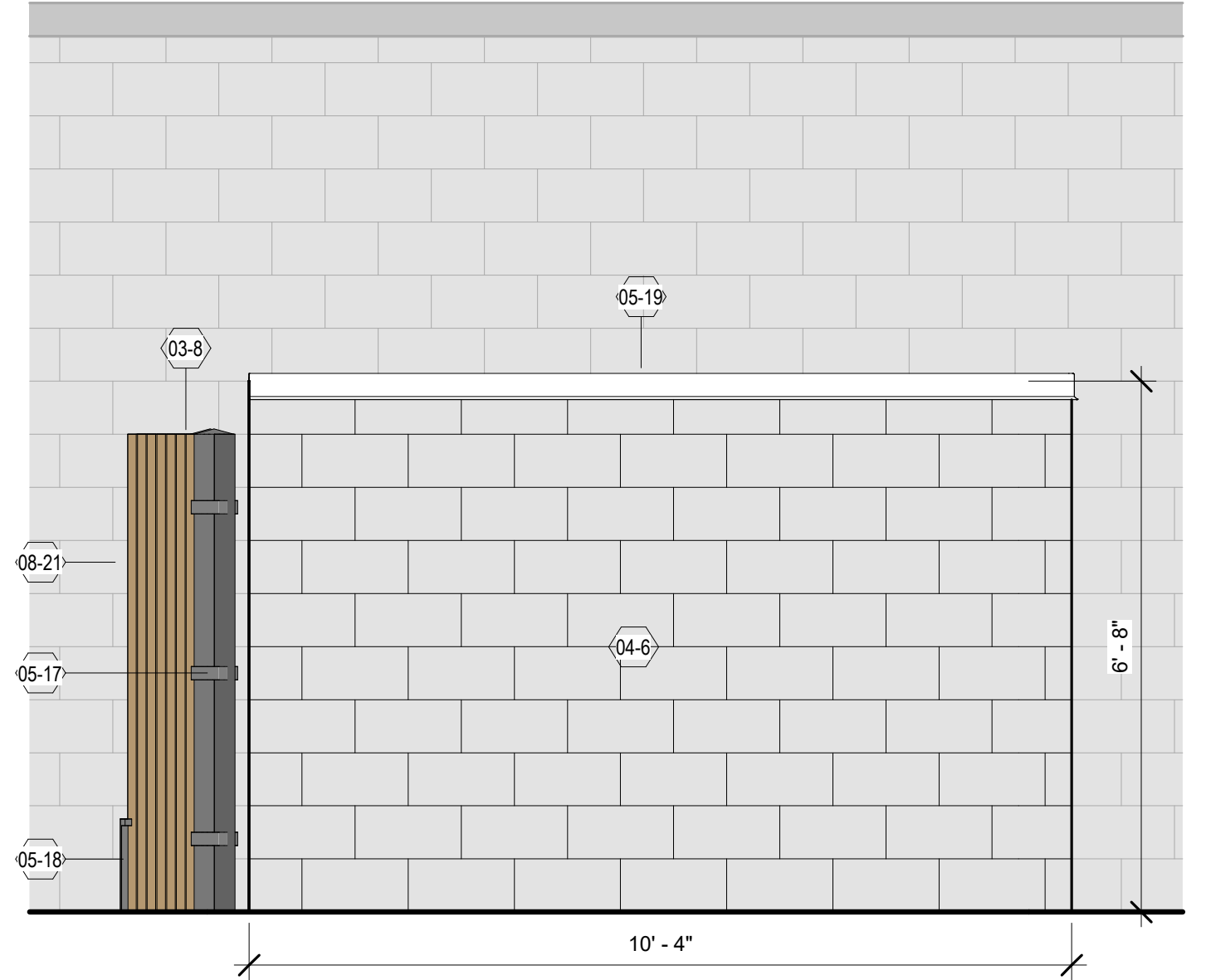
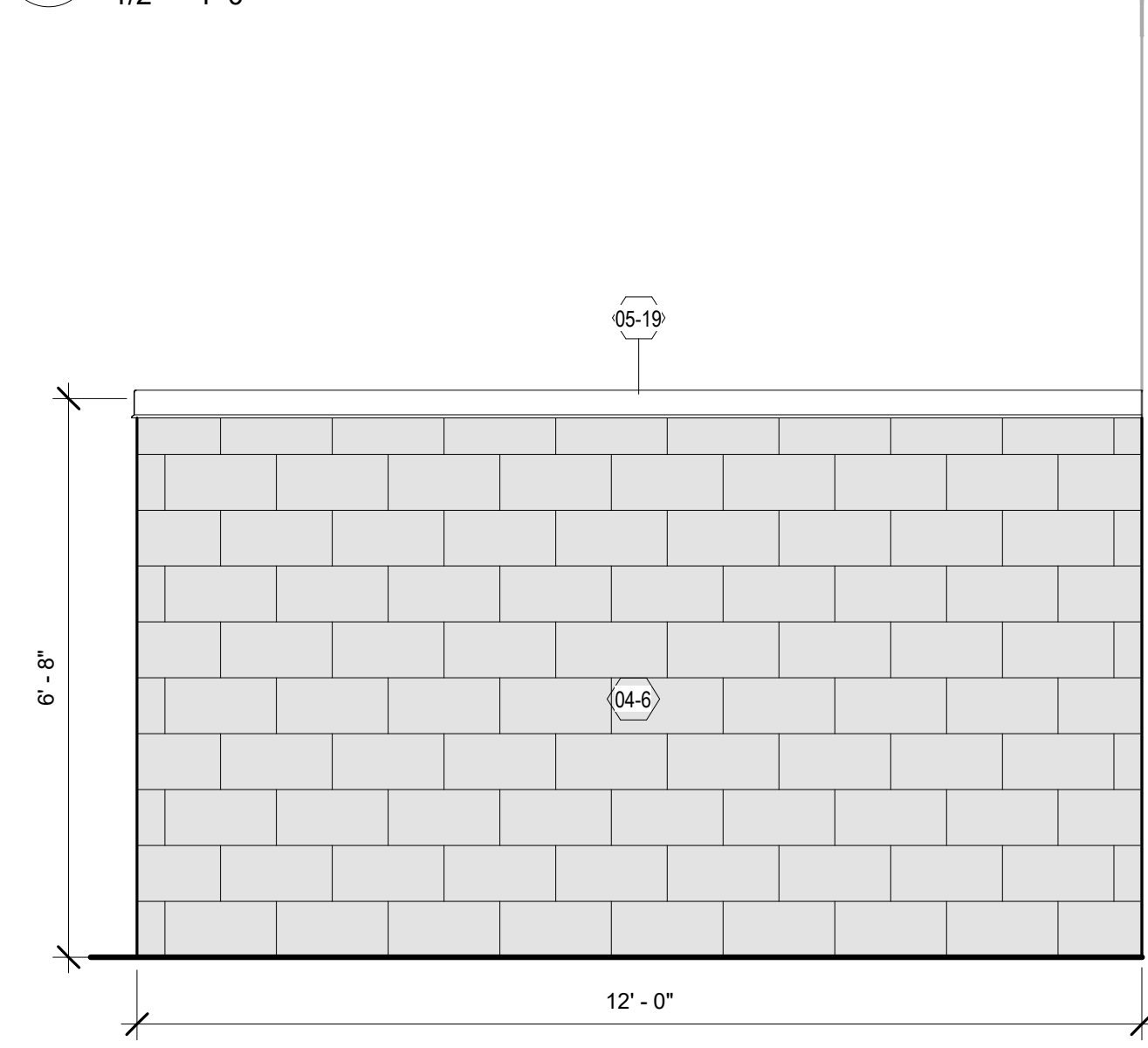


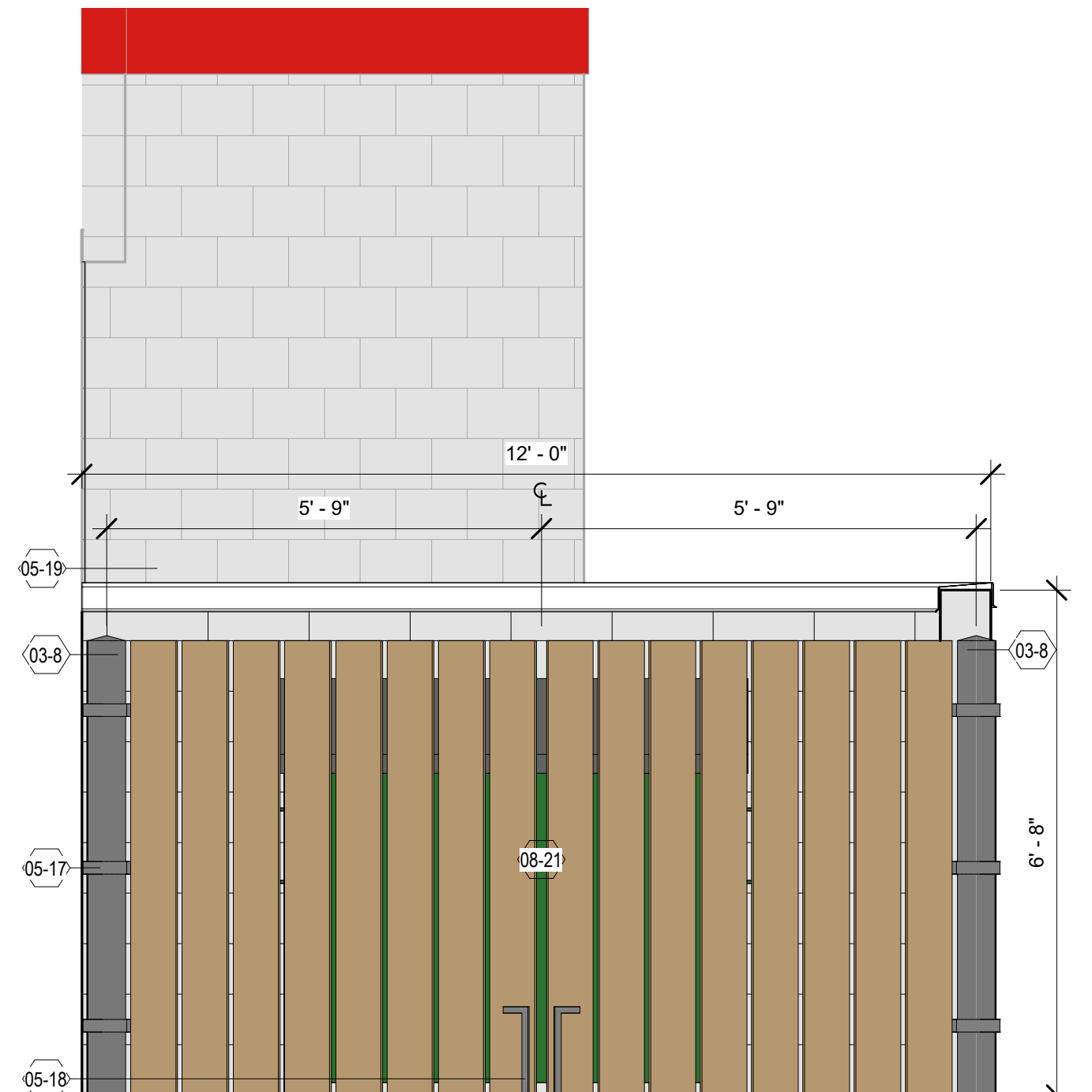
ELEVATION KEYNOTES	
KEY NOTE	DESCRIPTION
03-8	6" DIAMETER STEEL POST FILL W/ CONCRETE - SET POST 2'-8" MIN IN CONCRETE FDN - TYP.
04-6	CMU WALL (SEE STRUCTURAL) - PAINT TO MATCH EXISTING
05-17	ADJUSTABLE HINGE W/ GREASE FITTING - TYP.
05-18	(2) RODS - DRILL HOLES IN CONC TO LOCK GATES IN OPEN & CLOSED POSITIONS - TYP.
05-19	PREFINISHED METAL COPING
08-21	STEEL FRAME DOORS W/ STAINED AND SEALED CEDAR BOARDS



3 SOUTH DUMPSTER ENCLOSURE ELEVATION
1/2" = 1'-0"



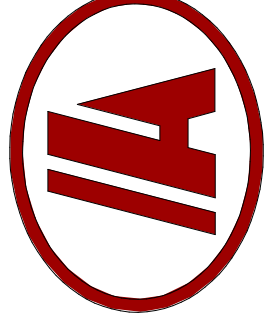
2 EAST DUMPSTER ENCLOSURE ELEVATION
1/2" = 1'-0"



1 DUMPSTER ENCLOSURE GATE ELEVATION
1/2" = 1'-0"

THIS IS A SCHEMATIC DRAWING, NOT A WORKING DRAWING. ANDERSON ASHTON IS NOT RESPONSIBLE FOR DIMENSIONS, CONSTRUCTION DETAILS, ENGINEERING DECISIONS, REGULATORY APPROVALS, OR LOCAL OR STATE REQUIREMENTS. THE USER SHALL VERIFY ALL DIMENSIONS AND REQUIREMENTS WITH THE LOCAL ARCHITECT. IT IS HIGHLY RECOMMENDED THAT A LOCAL ARCHITECT BE ENGAGED TO DEVELOP CONTRACT DOCUMENTS BASED ON THESE SCHEMATIC DRAWINGS AND CORRESPONDING OUTLINE SPECIFICATIONS. ANDERSON ASHTON SHALL NOT BE RESPONSIBLE FOR ANY ERRORS OR OMISSIONS IN THESE DRAWINGS. THE USER SHALL BE RESPONSIBLE FOR OBTAINING ALL NECESSARY PERMITS AND APPROVALS. ANDERSON ASHTON SHALL NOT BE DEVELOPED IN A CONTRACTUAL AGREEMENT.

ANDERSON ASHTON
DESIGN / BUILD
2746 South 168th Street
New Berlin, WI 53151
Phone: (262) 786-4640
WWW.ANDERSONASHTON.COM



PRELIMINARY NOT FOR CONSTRUCTION

PROPOSED REMODEL BUILDING FOR:

HOP 'N' SHOP #19

1505 E RACINE AVE WALKESHA, WI 53186

DRAFTED BY: SS
DESIGNER: RRS
ISSUE: 4/17/2023 2:01:25 PM
SUBMITTAL DATE: XX-XX-XX
DESIGN NO. ###
CONSTRUCTION NO. 4018

ELEVATIONS

A201

COPYRIGHT PROTECTED 2023