

PROJECT INFORMATION

PROPOSED MASTER PLAN FOR:
MONTESSORI SCHOOL OF WAUKESHA
2600 SUMMIT AVENUE • WAUKESHA, WI

PROFESSIONAL SEAL

PRELIMINARY DATES
FEB. 19, 2021

NOT FOR CONSTRUCTION

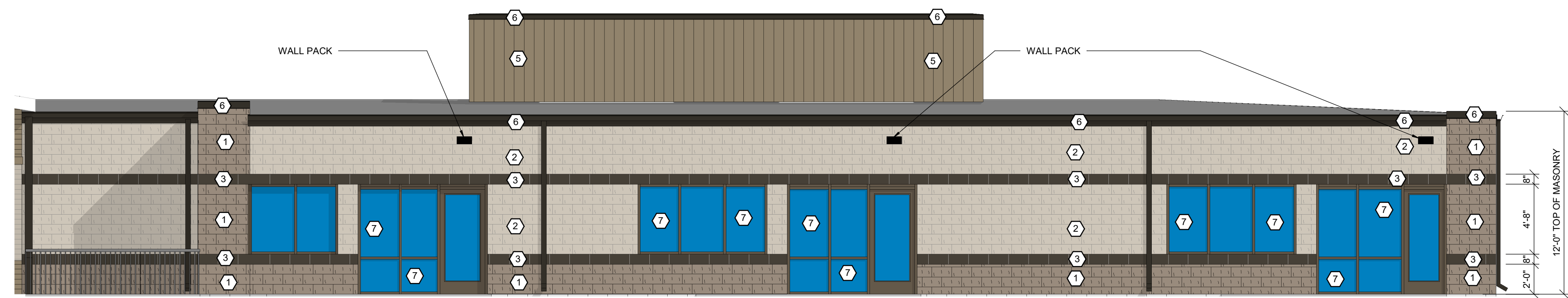
JOB NUMBER
2053880

SHEET NUMBER
A2.1

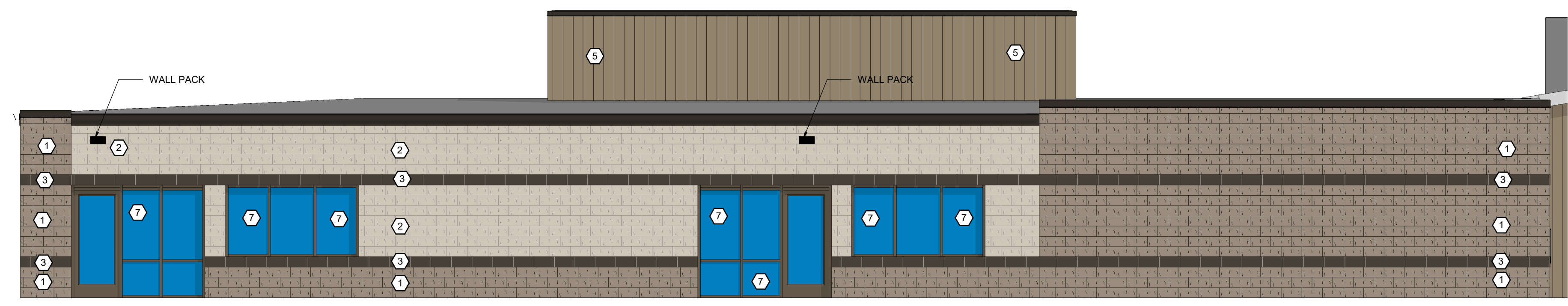
EXTERIOR FINISH KEY	
7	ALUMINUM FRAMED WINDOW SEE SHEET A6.1
6	PREFINISHED ALUMINUM (TRIM, FASCIA, GUTTERS, DOWNSPOUTS, ETC) MFR: PAC-CLAD COLOR: DARK BRONZE
5	ARCHITECTURAL METAL PANEL SCREEN MFR: MCELROY STYLE: MULTI-RIB COLOR: MATCH EXISTING
4	EXISTING METAL SIDING
3	EXISTING SPLIT-FACE CMU STYLE: TO REMAIN COLOR: TAN ALT #1: PAINT TO MATCH NEW
2	16x8x4 SPLIT-FACE CMU VENEER MFR: COUNTY MATERIALS COLOR: BISQUE 18-068
1	16x8x4 SPLIT-FACE CMU VENEER MFR: COUNTY MATERIALS COLOR: BROWN 18-068

NOTES

- VERIFY ALL COLORS WITH OWNER PRIOR TO ORDERING
- 'CJ' INDICATES LOCATION OF MASONRY CONTROL JOINT
• SEE DETAIL 1/A4.1



2 ENLARGED EAST ELEVATION
A2.1 SCALE: 3/16" = 1'-0"



1 ENLARGED WEST ELEVATION
A2.1 SCALE: 3/16" = 1'-0"