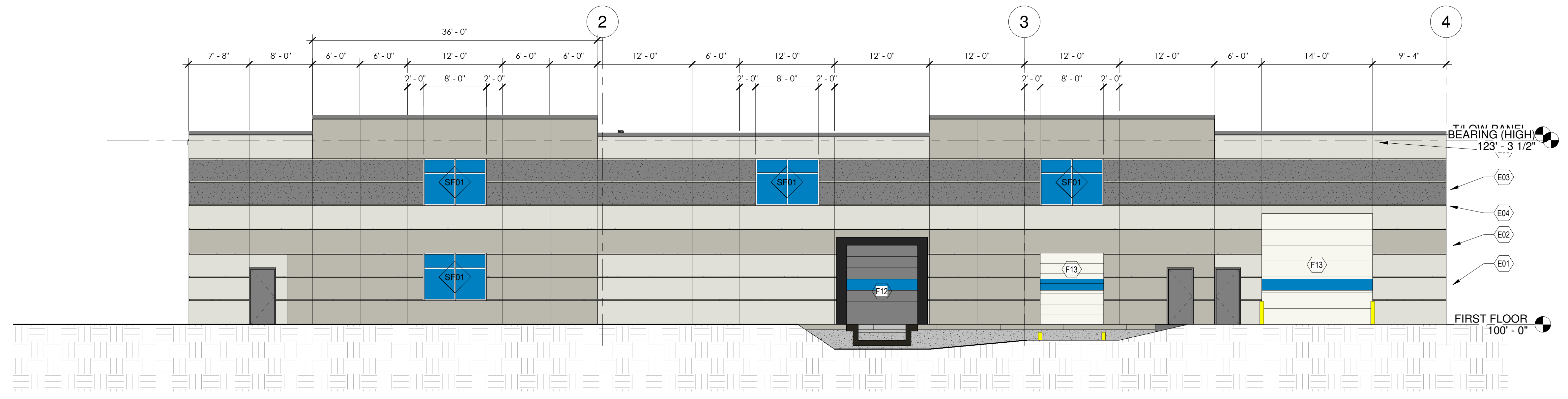
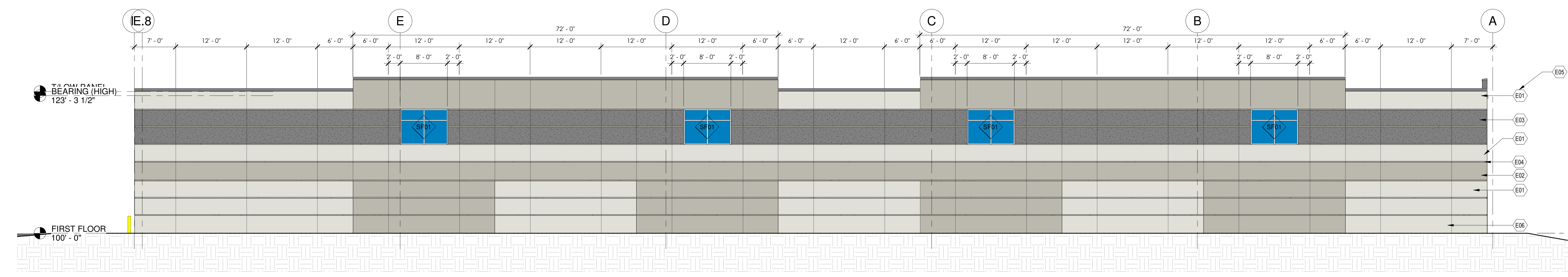


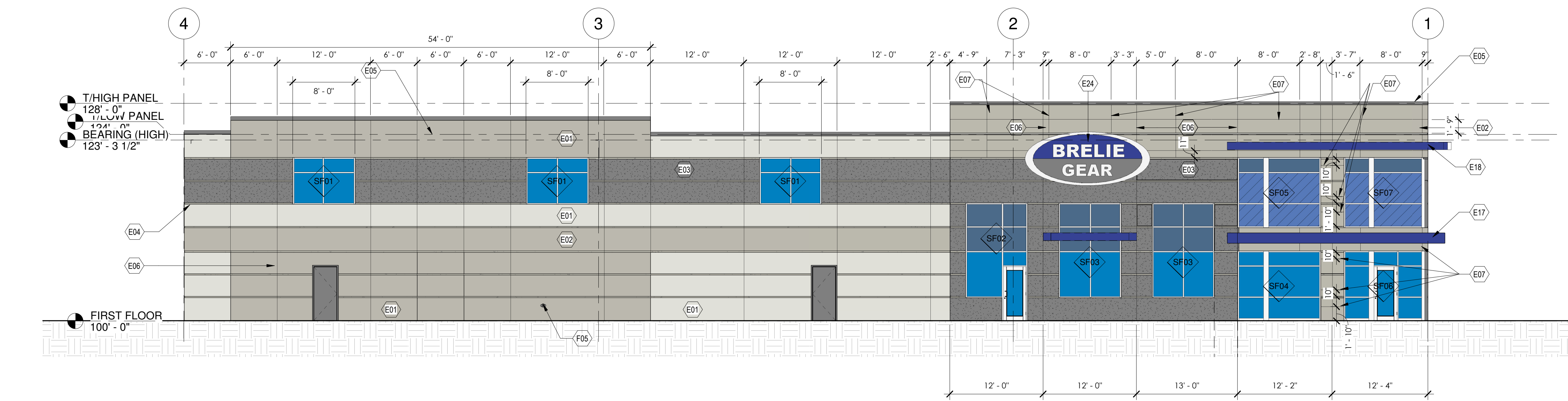
KEYNOTE LEGEND	
VALUE	FLOOR PLAN CODED NOTES
E01	EXTERIOR PRE CAST CONCRETE WALL PANEL SHALL BE INSULATED WITH PAINTED FINISH - COLOR 1
E02	EXTERIOR PRE CAST CONCRETE WALL PANEL SHALL BE INSULATED WITH PAINTED FINISH - COLOR 2
E03	EXTERIOR PRE CAST CONCRETE WALL PANEL SHALL BE INSULATED WITH PAINTED FINISH - COLOR 3
E04	REVEAL - COLOR 4
E05	PRE-FINISHED METAL 24 GA. COPING COLOR SHALL BE "XXXXXX".
E06	PANEL VERTICAL JOINT SEAL
E07	PANEL HORIZONTAL AND VERTICAL 'V' REVEAL
E17	STEEL FRAMED, PRE-FINISHED BREAK METAL CLAD CANOPY, COLOR 5
E18	PAINTED TUBE STEEL SUN SHADES, SEE STRUCTURAL DRAWINGS, COLOR 5
E24	SIGNAGE BY OWNER
F05	FIRE DEPARTMENT CONNECTION
F12	7' X 8' AIR POWERED DOCK LEVELERS- COORDINATE WITH ELECTRICAL
F13	DOCK LEVELER CONTROL PANEL



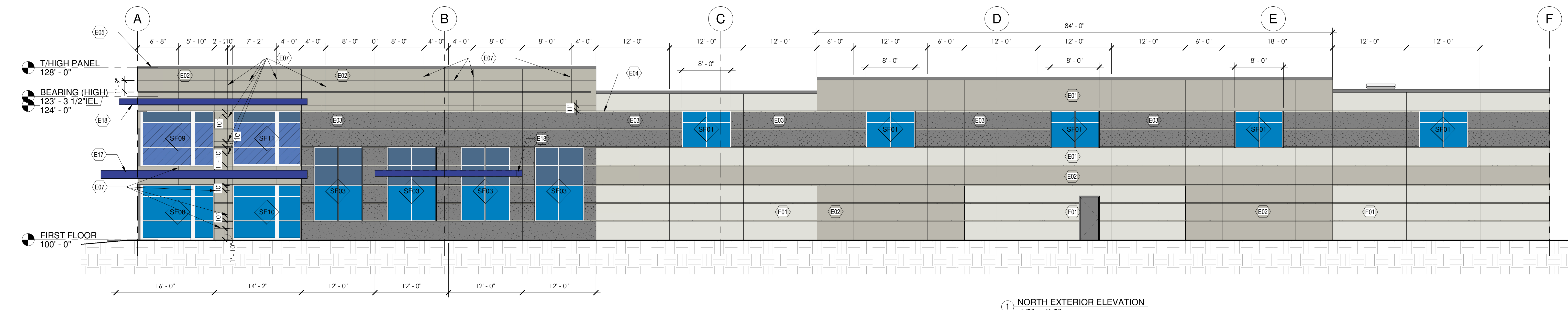
**4 WEST EXTERIOR ELEVATION**  
 1/8" = 1'-0"



**3 SOUTH EXTERIOR ELEVATION**  
 1/8" = 1'-0"



**2 EAST EXTERIOR ELEVATION**  
 1/8" = 1'-0"



**1 NORTH EXTERIOR ELEVATION**  
 1/8" = 1'-0"

THE PROPOSED COMMERCIAL NON-RESIDENTIAL BUILDING TO BE LOCATED IN CLIMATE ZONE 6 (PER IECC SECTION 502.2 PER TABLE 502.2.1) BUILDING ENVELOPE REQUIREMENTS - OPAQUE ASSEMBLIES.

ROOFS - PROPOSED ROOF INSULATION ENTIRELY ABOVE DECK R-20ci REQUIRED AND R-25ci PROVIDED MEETS OR EXCEEDS CODE MINIMUM.

WALLS ABOVE GRADE PROPOSED EXTERIOR WALL - MASS (PRECAST INSULATED CONCRETE) R-13.3ci REQUIRED AND R-16ci PROVIDED MEETS OR EXCEEDS CODE MINIMUM.

SLAB-ON-GRADE FLOORS - PROPOSED UNHEATED SLABS R-10 FOR 24 INCHES BELOW REQUIRED AND R-10 FOR 24 INCHES OR MORE PROVIDED MEETS OR EXCEEDS CODE MINIMUM.

PER TABLE 502.3 BUILDING ENVELOPE REQUIREMENTS: FENESTRATION  
 VERTICAL FENESTRATION (40% MAXIMUM ALLOWED ABOVE GRADE) 5% ACTUAL PROVIDE REQUIRED U - FACTOR .40 ACTUAL PROVIDED .29 AND SHGC .41

PER 2015 IECC:

C402.5 AIR LEAKAGE THERMAL ENVELOPE. PROPOSED BUILDING COMPLIES.

C402.5.1 AIR BARRIER PER C402.5.1.2.1 MATERIALS SEE EXCEPTION 13 CAST-IN-PLACE AND PRECAST CONCRETE. PROPOSED BUILDING COMPLIES.

C402.5.2 AIR LEAKAGE FENESTRATION SEE EXCEPTION 1. FIELD FABRICATED FENESTRATION ASSEMBLIES THAT ARE SEALED IN ACCORDANCE WITH SECTION C402.5.1. PROPOSED BUILDING COMPLIES.

C402.5.3 ROOMS CONTAINING FUEL - BURNING APPLIANCES EXCEPTION 1. DIRECT VENT APPLIANCES WITH BOTH INTAKE AND EXHAUST PIPES INSTALLED CONTINUOUS TO OUTSIDE. PROPOSED BUILDING COMPLIES.

C402.5.4 DOORS AND ACCESS OPENINGS TO SHAFTS, CHUTES, STAIRWAYS AND ELEVATOR LOBBIES. NOT APPLICABLE TO PROPOSED BUILDING.

C402.5.5 AIR INTAKES, EXHAUST OPENINGS, STAIRWAYS AND SHAFTS, IF REQUIRED TO BE DAMPERED. PROPOSED BUILDING COMPLIES.

C402.5.6 LOADING DOCK WEATHER SEALS TO BE PROVIDED FOR LOADING DOCK DOORS. PROPOSED BUILDING COMPLIES.

C402.5.7 VESTIBULES EXCEPTION 2. DOORS NOT INTENDED TO BE USED BY THE PUBLIC, SUCH AS DOORS TO MECHANICAL OR ELECTRICAL EQUIPMENT ROOMS, ON INTENDED SOLELY FOR EMPLOYEE USE. EXCEPTION 4 DOORS THAT OPEN DIRECTLY FROM A SPACE LESS THAN 3,000 SQUARE FEET IN AREA. EXCEPTION 6 DOORS USED PRIMARILY TO FACILITATE VEHICULAR MOVEMENT OR MATERIAL HAND LINE AND ADJACENT PERSONAL DOORS. PROPOSED BUILDING COMPLIES.

C402.5.8 RECESSED LIGHTING. NOT APPLICABLE TO PROPOSED BUILDING.