

Waukesha Residences, LLC by T. Wall Enterprises, LLC Fox Head Residences - Plan Commission Submittal

Maple Avenue, Waukesha, Wisconsin



11000 west park place milwaukee, wisconsin 53224 t 414 359 3060
2310 crossroads drive suite 2000 madison, wisconsin 53718 t 608 240 9900
1613 fruitville road suite 3 sarasota, florida 34236 t 941 348 3618
intelligent designs. inspired results. | www.prarch.com

Sheet Index

Architectural

A000 - Title Sheet
A001 - Exterior Perspective
A002 - Existing Aerial Site Plan
A003 - Proposed Aerial Site Plan
A200 - Lower Parking Plan
A201 - Site Plan / First Floor Plan
A202 - Second Floor Plans
A203 - Third Floor Plans
A204 - Fourth Floor Plan
A205 - Mezzanine Floor Plan
A232 - Unit Layouts
A233 - Unit Layouts
A400 Exterior Elevations
A401 Exterior Elevations

Landscape

L1 - Landscape Plan

Site Civil

S554 - Draft ALTA/ACSM Land Title Survey 1 of 2
S554 - Draft ALTA/ACSM Land Title Survey 2 of 2
C100 - Existing Conditions
C200 - Demolition Plan
C300 - Site Plan
C400 - Grading and Erosion Control Plan
C500 - Utility Plan
C600 - Plan and Profile - Watermain Easement
C601 - Plan and Profile - Watermain Easement

Site Lighting

E1 - Site Lighting Layout Plan

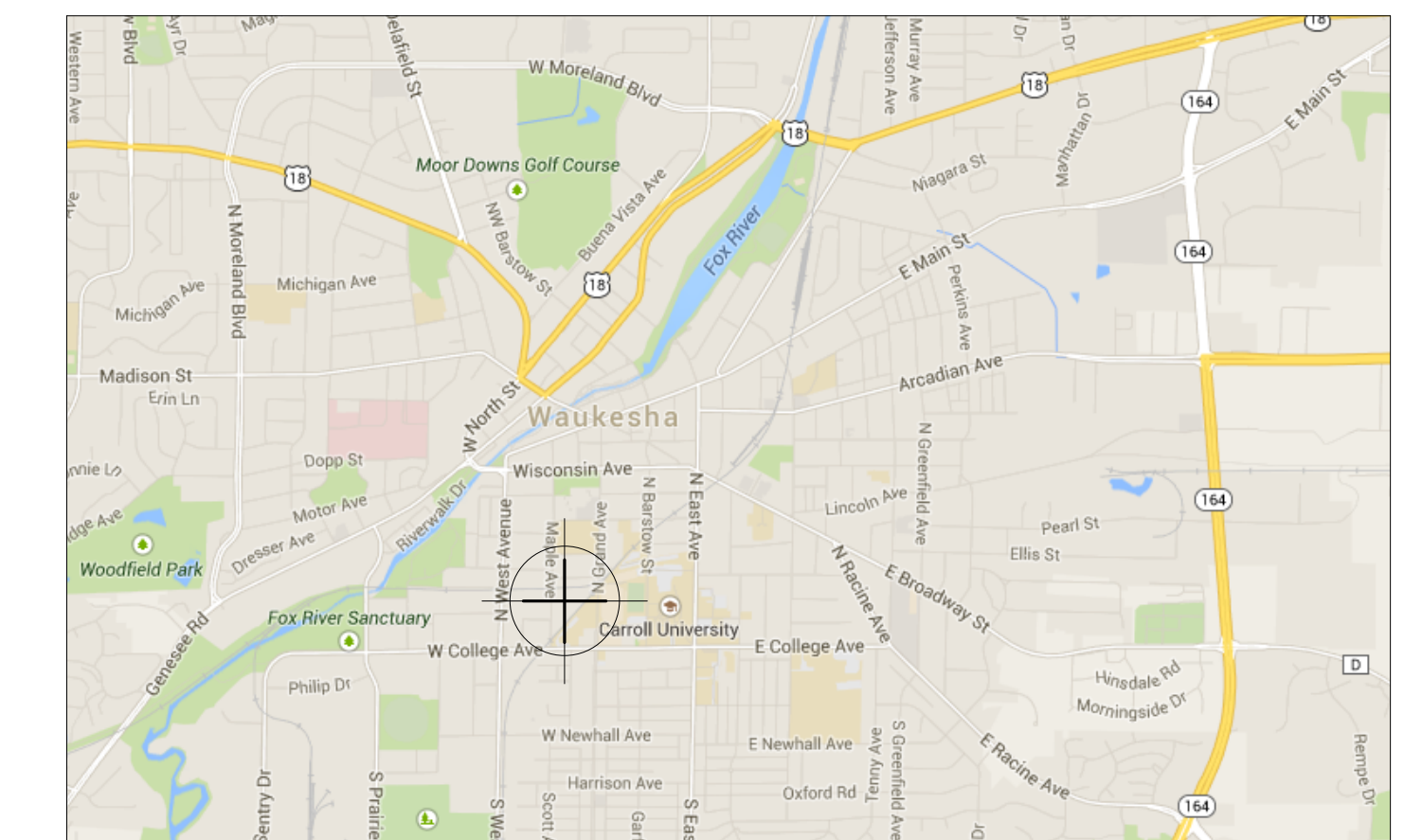
Additional Information

R.A Smith National - Memo

Project Information

Project Date: 1/13/14
PRA Project Number: 140243-03

Project Location



Project Team



Owner Waukesha Residences, LLC T Wall Enterprises, LLC	Tel 608 575-1018
Architectural Plunkett Raysich Architects, LLP	Tel 414 359-3060 Fax 414 359-3070
Landscape Bruce Company	Tel 608 826-0532 Fax 608 831-4236
Site Civil Vierbicher	Tel 414 555-1234 Fax 608 826-0532
Site Lighting Powrtek Engineering, Inc	Tel 262 827-9575 Fax 262 827-9615

1/22/2015 4:54:31 PM C:\pra\incl\Local\Project\Files\140243-03-A\central\1\14_nulabel.rvt



NOT FOR CONSTRUCTION

© Plunkett Ryscich Architects, LLP

Drawn By:
MT,NU,MR
Date:
1/13/14
Job No.:
140243-03
Sheet No.:

A 001

Fox Head Residences - Plan Commission Submittal
Maple Avenue, Waukesha, Wisconsin

Revisions

pra
PLUNKETT RYSICICH
ARCHITECTS, LLP

11000 West Park Place Milwaukee, Wisconsin 53224 1 414 359 2646
2310 Crossroads Drive 2000 Madison, Wisconsin 53718 1 608 248 9900
1613 Frutkin Road Suite 3 Sarasota, Florida 34236 1 941 348 3618
intelligent designs. inspired results. | www.praarch.com



1 EXISTING SITE PLAN
A.002 1" = 20'-0"

NOT FOR CONSTRUCTION
© Plunkett RAYSCH Architects, LLP

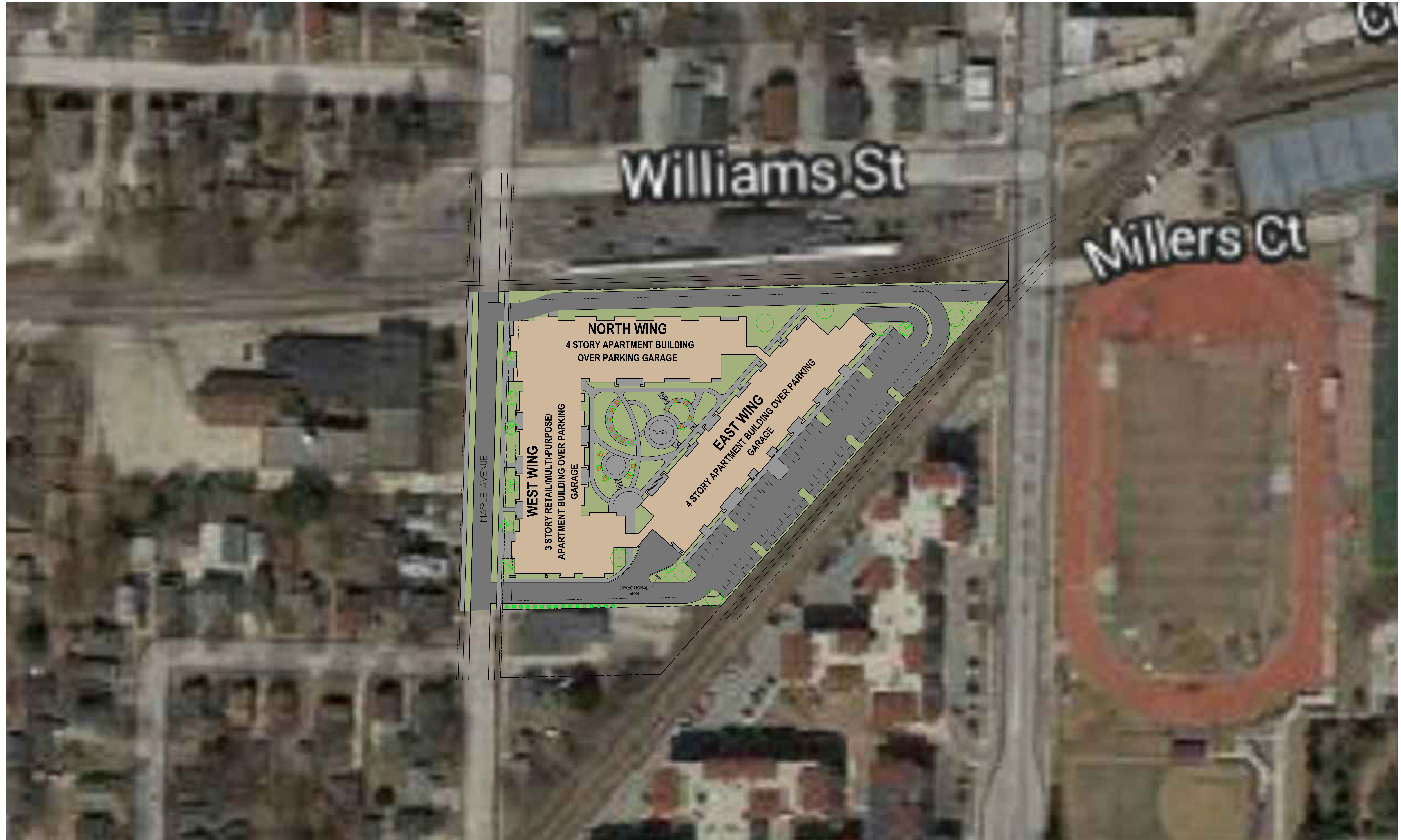
Drawn By:
CB,MT
Date:
1/13/14
Job No.:
140243-03
Sheet No.:

Fox Head Residences - Plan Commission Submittal
Maple Avenue, Waukesha, Wisconsin

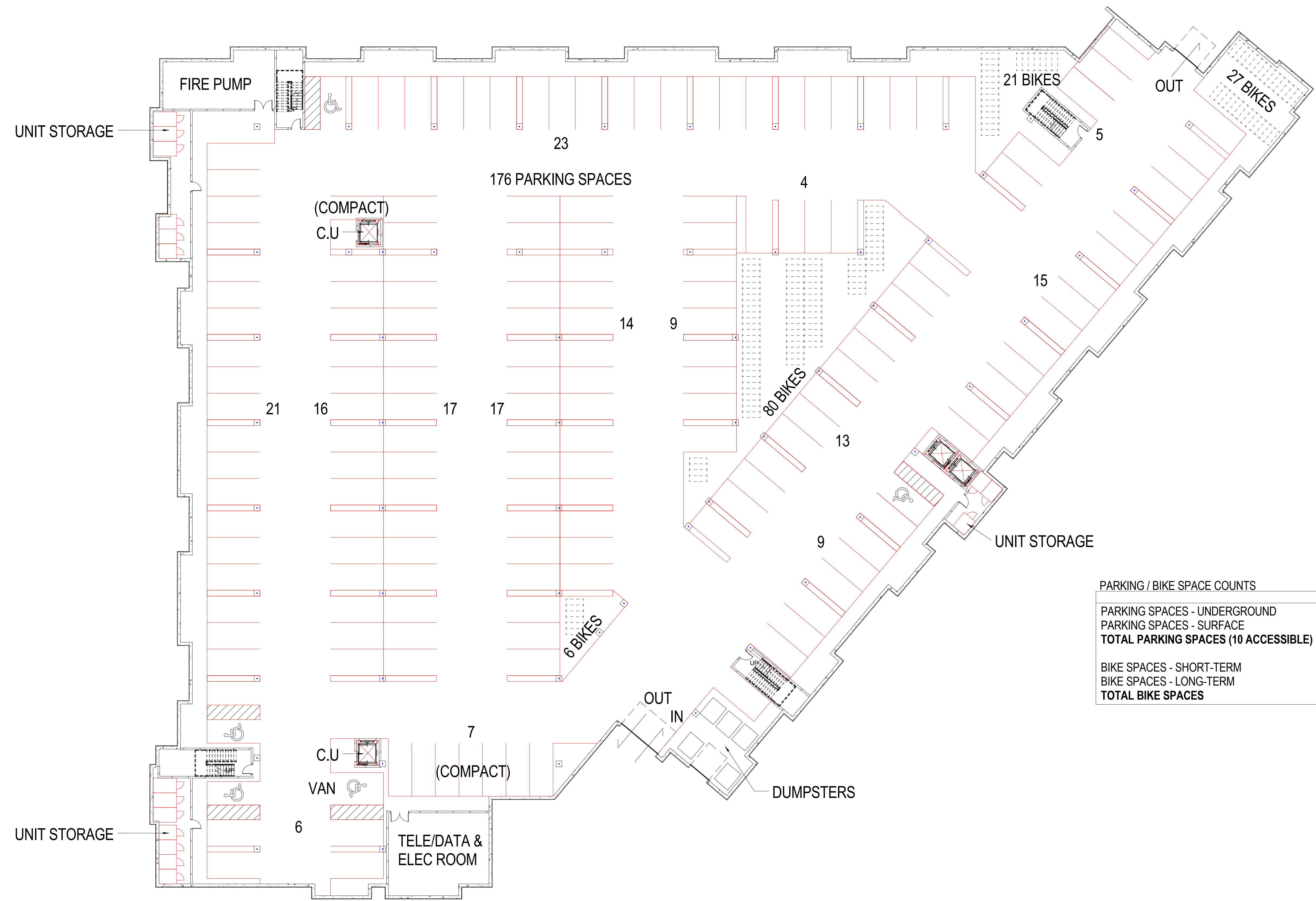
pra

PLUNKETT RAYSCH
ARCHITECTS, LLP

11000 West Park Place Milwaukee, Wisconsin 53224 1.414.359.2646
2310 Crossroads Drive 2000 Madison, Wisconsin 53718 1.608.248.9900
1613 Frutville Road Suite 3 Sarasota, Florida 34236 1.941.348.3618
intelligent designs. inspired results. | www.praich.com



1/22/2015 4:51:13 PM C:\pra\local\Project Files\140243-03-A\central\1/14_mllb1.rvt



PARKING / BIKE SPACE COUNTS	
	TOTALS
PARKING SPACES - UNDERGROUND	176
PARKING SPACES - SURFACE	62
TOTAL PARKING SPACES (10 ACCESSIBLE)	238
BIKE SPACES - SHORT-TERM	13
BIKE SPACES - LONG-TERM	121
TOTAL BIKE SPACES	134

1 LOWER LEVEL PLAN - 1/16
A200 1/16" = 1'-0"

NOT FOR CONSTRUCTION
© Plunkett Rausch Architects, LLP

Revisions
Drawn By: AD
Date: 1/13/14
Job No.: 140243-03
Sheet No.: A200

Fox Head Residences - Plan Commission Submittal
Maple Avenue, Waukesha, Wisconsin

pra
PLUNKETT RAUSCH
ARCHITECTS, LLP

11000 West Park Place Milwaukee, Wisconsin 53224 1 414 359 2646
2310 Crossroads Drive 2000 Madison, Wisconsin 53718 1 608 248 9900
1613 Frohille Road Suite 3 Sarasota, Florida 34236 1 941 348 3618
intelligent designs. inspired results. | www.praarch.com