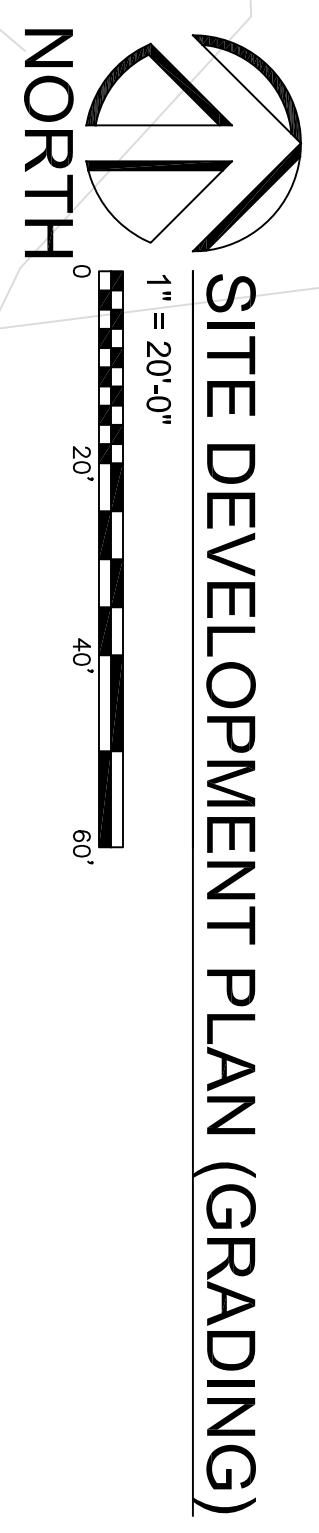
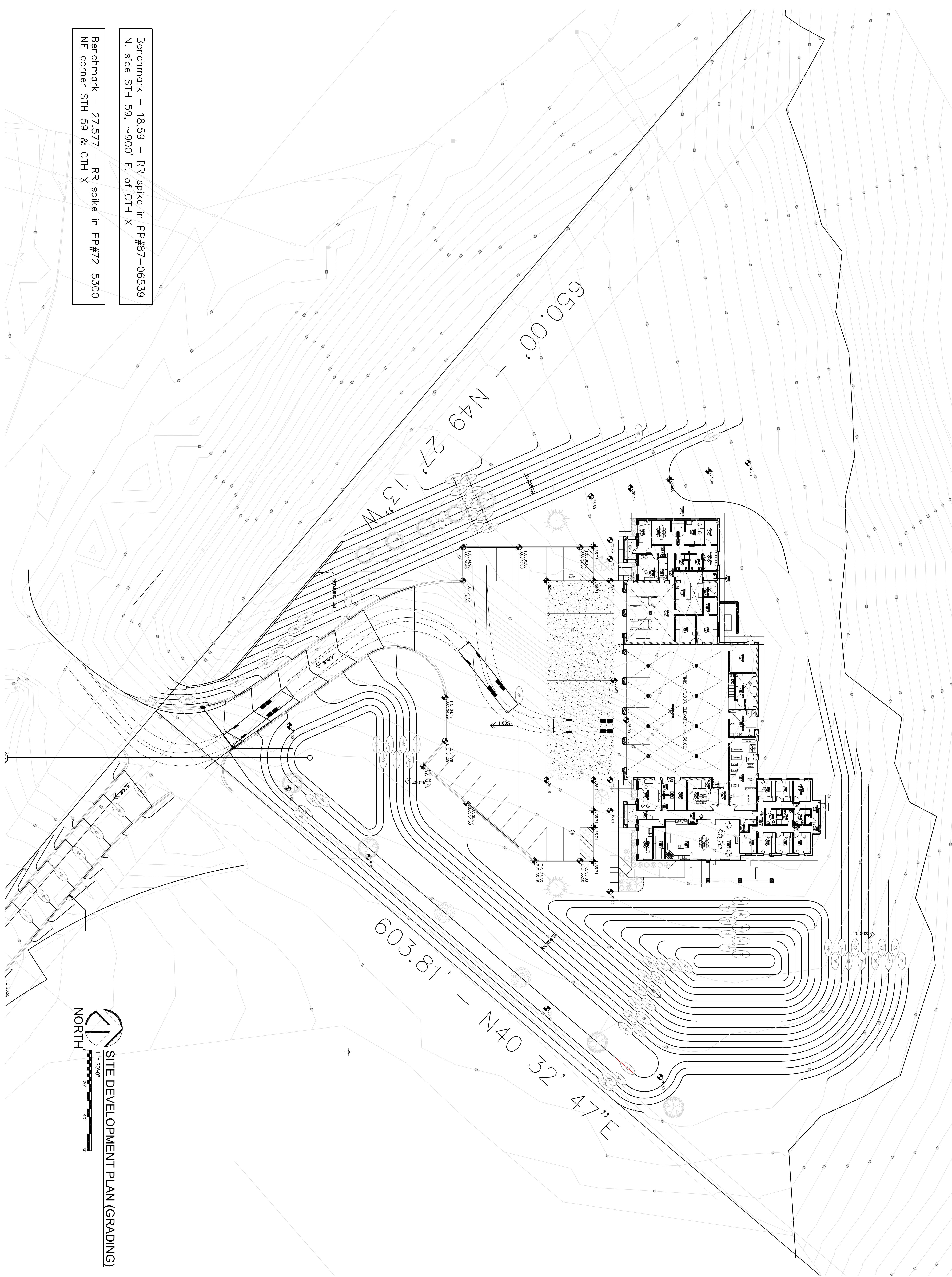


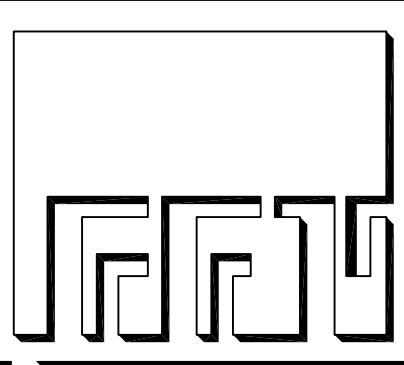
Benchmark - 18.59 - RR spike in PP#87-06539
 N. side STH 59, ~900' E. of CTH X
 Benchmark - 27.577 - RR spike in PP#72-5300
 NE corner STH 59 & CTH X



| TYPE | DATE | BY | REV# |
|-------------------|------------|----|------|
| | 12/01/2016 | | |
| PROJECT NO. 13055 | | | |
| SHEET NO. C103 | | | |

CONSULTANT

A NEW FIRE STATION NO. 3 FOR THE CITY OF WAUKESHA
 2440 S. T. H. "59"
 WAUKESHA, WISCONSIN



FISCHER-FISCHER-THEIS, INC. ARCHITECTS • ENGINEERS • PLANNERS
 S22 W22660 BROADWAY • WAUKESHA, WISCONSIN 53186-8199
 (262) 547-6969 • FAX (262) 547-6960 • E-MAIL: fft@fftarchitects.com

PRELIMINARY DRAWING
 NOT FOR CONSTRUCTION
 DATE PRINTED: 12/02/2016