

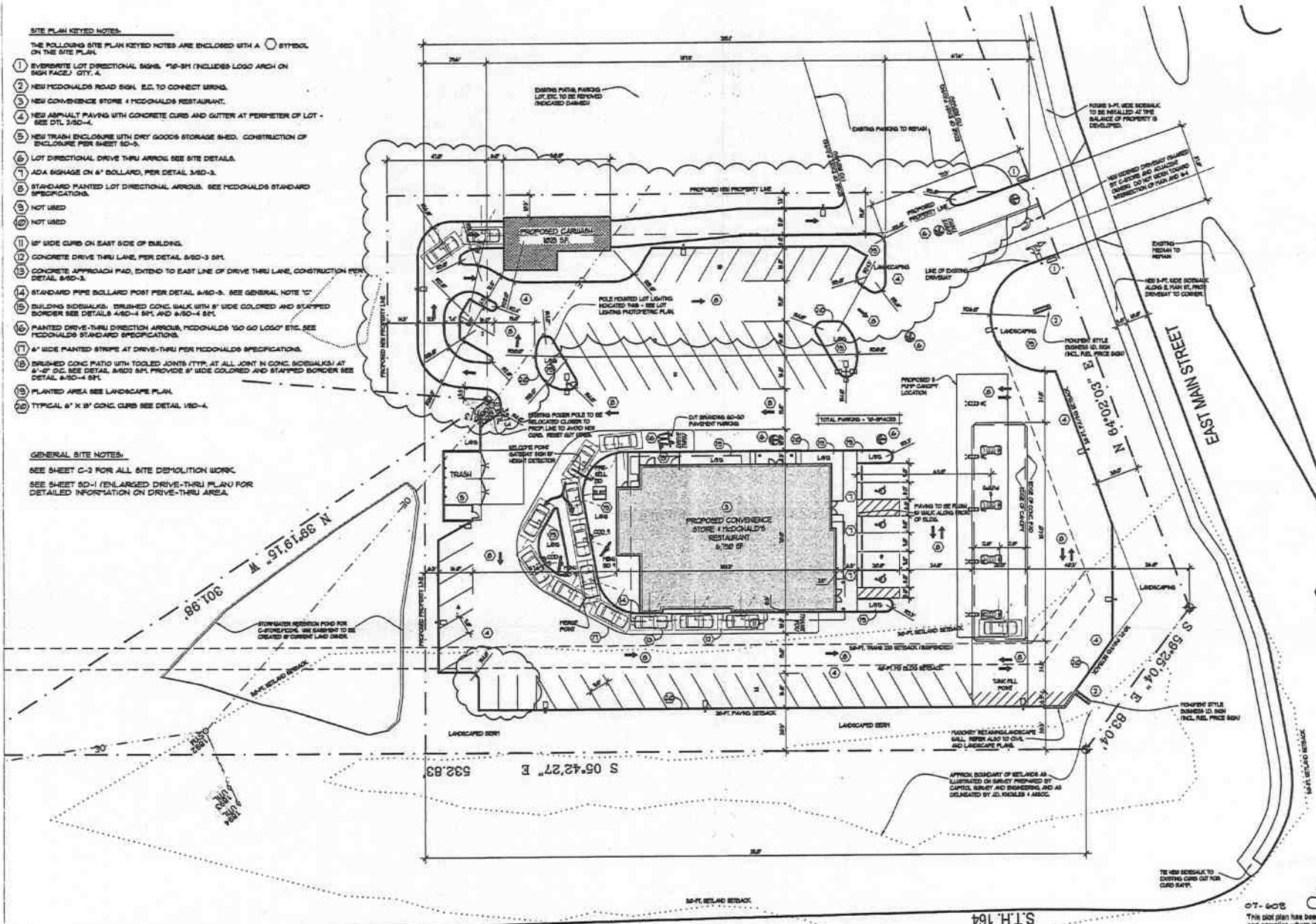
SITE PLAN KEYED NOTES:

THE FOLLOWING SITE PLAN KEYED NOTES ARE ENCLOSED WITH A ○ SYMBOL ON THE SITE PLAN.

- 1 EVERGREEN LOT DIRECTIONAL SIGNS, 110-8H (INCLUDES LOGO ARCH ON REAR FACE) QTY. 2.
- 2 NEW MCDONALD'S ROAD SIGN, E.C. TO CONNECT URNS.
- 3 NEW CONVENIENCE STORE & MCDONALD'S RESTAURANT.
- 4 NEW ASPHALT PAVING WITH CONCRETE CURBS AND GUTTER AT PERIPHERY OF LOT - SEE DETL. 3/SD-4.
- 5 NEW TRASH ENCLOSURE WITH DRY GOODS STORAGE 8-6D. CONSTRUCTION OF ENCLOSURE PER SHEET SD-5.
- 6 LOT DIRECTIONAL DRIVE THRU APPROX. SEE SITE DETAILS.
- 7 ADA SIGNAGE ON 4" BOLLARD, PER DETAIL 3/SD-3.
- 8 STANDARD PAINTED LOT DIRECTIONAL ARROWS. SEE MCDONALD'S STANDARD SPECIFICATIONS.
- 9 NOT USED.
- 10 NOT USED.
- 11 12" SIDE CURB ON EAST SIDE OF BUILDING.
- 12 CONCRETE DRIVE THRU LANE, PER DETAIL 8/SD-3 DET1.
- 13 CONCRETE APPROACH PAV. EXTEND TO EAST LINE OF DRIVE THRU LANE, CONSTRUCTION PER DETAIL 8/SD-3.
- 14 STANDARD PIPE BOLLARD POST PER DETAIL 8/SD-3. SEE GENERAL NOTE 10.
- 15 BUILDING SIDEWALKS. BRUSHED CONC. BALK WITH 8" WIDE COLORED AND STAFFED BORDER SEE DETAIL 8/SD-4 DET1 AND 8/SD-4 DET2.
- 16 PAINTED DRIVE-THRU DIRECTION ARROWS, MCDONALD'S 'SO GO LOGO' ETC. SEE MCDONALD'S STANDARD SPECIFICATIONS.
- 17 6" WIDE PAINTED STRIPE AT DRIVE-THRU PER MCDONALD'S SPECIFICATIONS.
- 18 BRUSHED CONC. PATIO WITH TOGGLED JOINTS (TYP. AT ALL JOINT IN CONC. SIDEWALKS) AT 8'-0" O.C. SEE DETAIL 8/SD 8/4. PROVIDE 6" WIDE COLORED AND STAFFED BORDER SEE DETAIL 8/SD-4 DET1.
- 19 PLANTED AREA SEE LANDSCAPE PLAN.
- 20 TYPICAL 6" X 18" CONC. CURB SEE DETAIL 1/SD-4.

GENERAL SITE NOTES:

SEE SHEET C-2 FOR ALL SITE DEMOLITION WORK.
SEE SHEET SD-1 (ENLARGED DRIVE-THRU PLAN) FOR DETAILED INFORMATION ON DRIVE-THRU AREA.



SITE PLAN
SCALE: 1" = 20'-0"



07-608
This site plan has been checked and approved where indicated.
Zachary M. - S. Front Yard, PD
Sally York - PD. 1st floor grade
Flair York - PD. Street Grade.



haag müller, inc.
Architecture • Engineering • Interiors
101 East Grand Avenue
Port Washington
Wisconsin 53074-2216
Telephone (262) 268-1200
Fax (262) 268-1250
www.haagmuller.com
COPYRIGHT 2007 © haag müller



SITE PLAN
PROPOSED CARWASH FOR:
CONVENIENCE STORE & MCDONALD'S
S.W. CORNER OF EAST MAIN ST & C.T.H. 164
WAUKESHA, WISCONSIN

NO.	DATE	REVISIONS / DESCRIPTION

DATE: MARCH 19, 2007
PROJ. NO.: 51031423
DRAWN BY: GLL
SHEET

C-1

1655 E. Waukesha St.