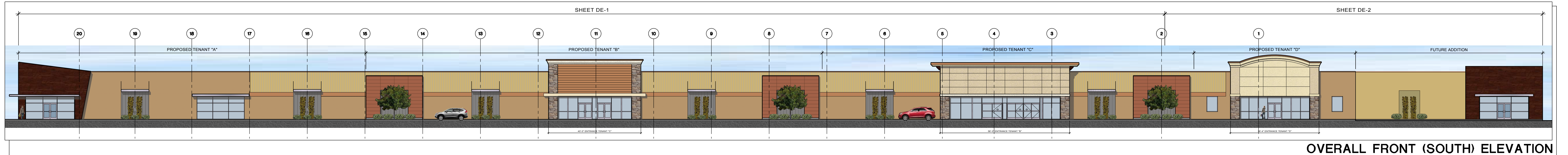


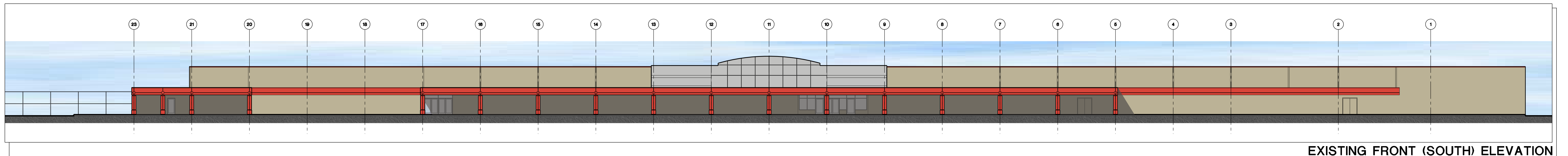
OVERALL REAR (NORTH) ELEVATION

SCALE: 1/8" = 1'-0"



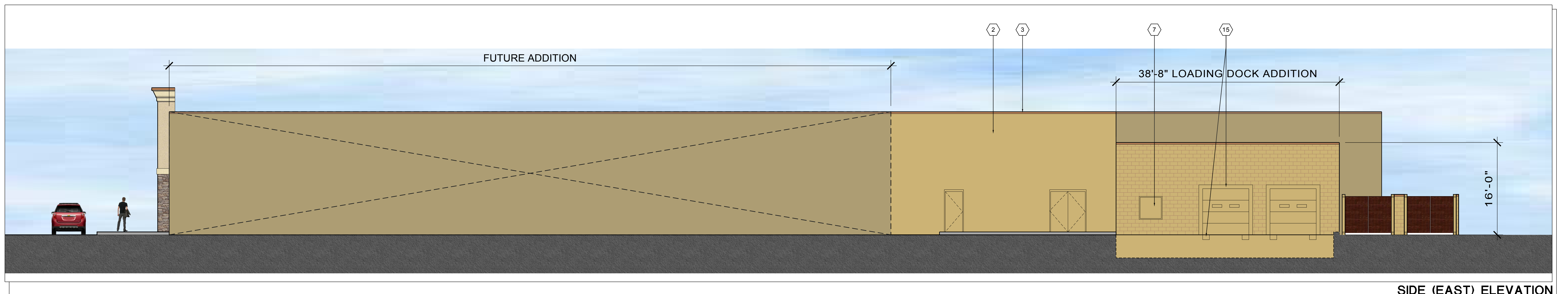
OVERALL FRONT (SOUTH) ELEVATION

SCALE: 1/8" = 1'-0"



EXISTING FRONT (SOUTH) ELEVATION

SCALE: 1/8" = 1'-0"



SIDE (EAST) ELEVATION

SCALE: 1/8" = 1'-0"

MATERIAL FINISH LEGEND

- | | | | | | |
|--|--|---|--|--|---|
| 1 FIBER CEMENT SIDING - LAP SIDING BY NICHIIA. COLOR - SW 6083 SABLE | 4 NEW CORRUGATED METAL PANEL ACCENT - GALVALUME FINISH | 7 COMPACTOR DOOR - PAINTED TO MATCH MASONRY | 10 CULTURED STONE - MOUNTAIN LEDGE BY ELDORADO STONE | 13 EIFS - NEW SANDPEBBLE FINISH EIFS. COLOR - DRYVIT: 386A - PURE CREAM | 16 METAL FASCIA - COLOR SIERRA TAN |
| 2 PAINT EXISTING BRICK - SW 6143 BASKET BEIGE | 5 NEW SUNSCREEN - METAL CANOPY - CLEAR ANODIZED ALUMINUM | 8 PATCH EXISTING METAL PANELS AND PAINT TO MATCH BRICK | 11 EIFS - NEW SANDPEBBLE FINISH EIFS. COLOR - DRYVIT: 471 - BEIGE | 14 MASONRY TRASH ENCLOSURE - PAINT TO MATCH BUILDING AND COMPOSITE WOOD GATES. | 17 FIBER CEMENT LAP SIDING BY NICHIIA - PAINTED TO MATCH SIERRA TAN |
| 3 PAINT EXISTING METAL COPING. COLOR SIERRA TAN | 6 NEW ALUMINUM STOREFRONT w/1" INSULATED, LOW-E, CLEAR GLAZING - CLEAR ANODIZED ALUMINUM | 9 FIBER CEMENT, ILLUMINATION SERIES PANEL BY NICHIIA - COLOR TO MATCH SW 6342 - SPICY HUE | 12 EIFS - NEW SANDPEBBLE FINISH EIFS. COLOR - DRYVIT: 457B - WHOLE WHEAT | 15 DOCK SEAL AND DOCK BUMPER | |