

CONSTRUCTION STAGING PLAN

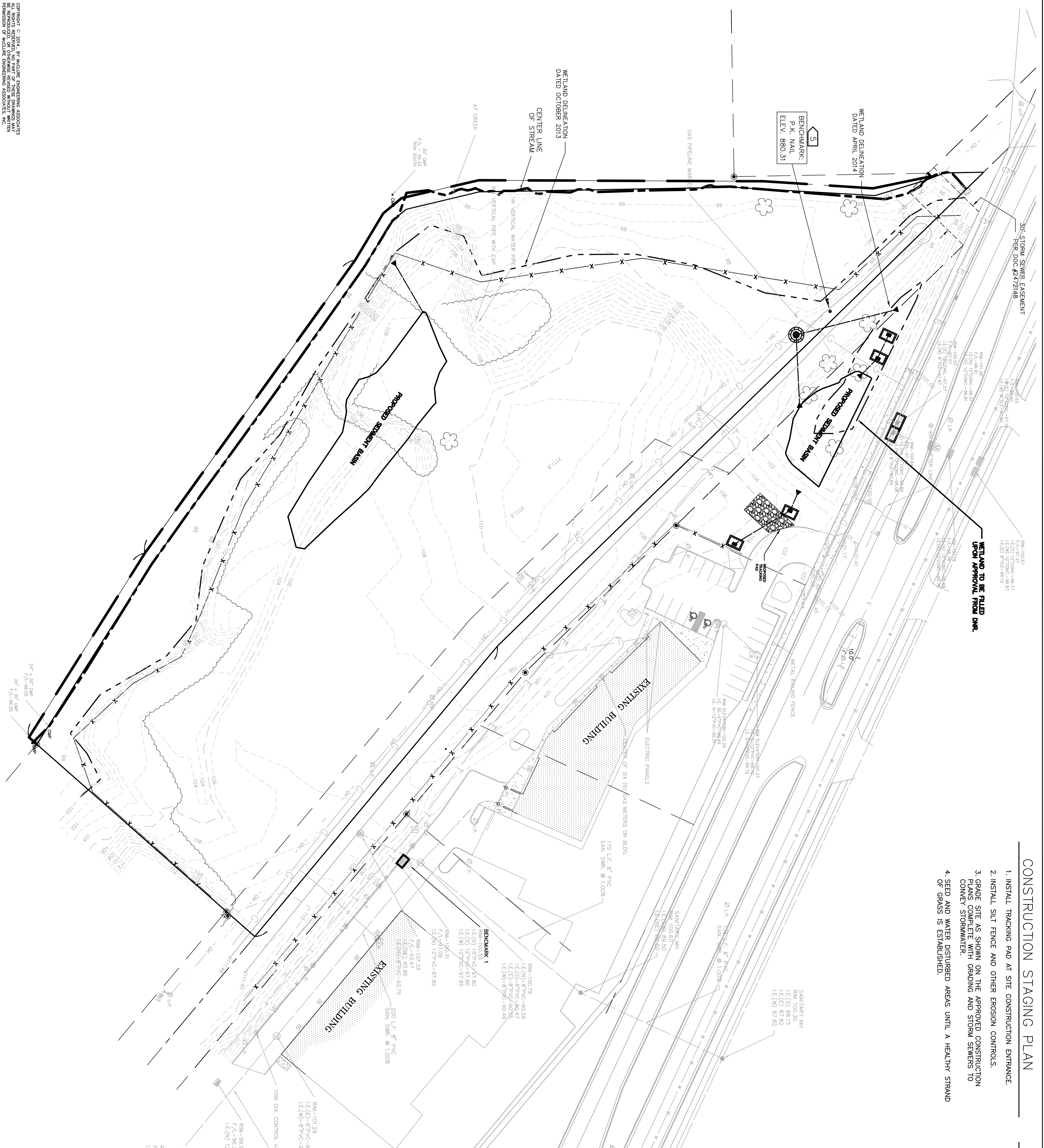
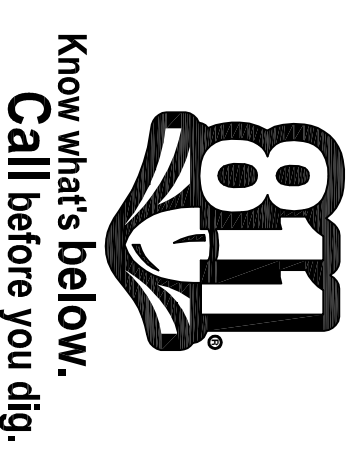
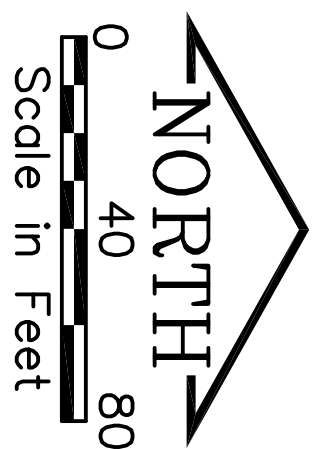
1. INSTALL TRACKING PAD AT SITE CONSTRUCTION ENTRANCE.
2. INSTALL SILT FENCE AND OTHER EROSION CONTROLS.
3. GRADE SITE AS SHOWN ON THE APPROVED CONSTRUCTION PLANS COMPLETE WITH GRADING AND STORM SEWERS TO CONVEY STORMWATER.
4. SEED AND WATER DISTURBED AREAS UNTIL A HEALTHY STRAND OF GRASS IS ESTABLISHED.

EROSION CONTROL NOTES

1. GENERAL
 - A. OBTAIN ALL NECESSARY EROSION CONTROL PERMITS PRIOR TO COMMENCING WORK.
 - B. TAKE ALL MEASURES NECESSARY TO PREVENT EROSION, WATER POLLUTION AND SILTATION CAUSED BY CONSTRUCTION OF THIS PROJECT.
 - C. USE PROVISIONS OF THE WISCONSIN CONSTRUCTION SITE EROSION & SEDIMENT CONTROL STANDARDS, CURRENT EDITION, PREPARED BY THE WISCONSIN DEPT. OF NATURAL RESOURCES, FOR EROSION CONTROL PRACTICES.
 - D. USE PROVISIONS OF THE CITY OF WAUKESHA FOR EROSION CONTROL PRACTICES.
 - E. THIS EROSION CONTROL PLAN IS SUBJECT TO CHANGE BASED ON FIELD CONDITIONS. ALL PLAN CHANGES SHALL BE DOCUMENTED ON THIS PLAN SHEET AND FORWARDED TO REGULATORY AGENCIES.
 - F. PRIOR TO BEGINNING WORK, THE CONTRACTOR MAY BE REQUIRED TO SUBMIT AN EROSION AND SEDIMENT CONTROL PLAN FOR REVIEW AND APPROVAL BY THE CITY OF WAUKESHA. THE VARIOUS STAGES OF CONSTRUCTION FOR APPROVAL BY THE CITY OF WAUKESHA.
 - G. ALL EROSION AND SEDIMENT CONTROL DEVICES SHALL BE IN PLACE PRIOR TO BEGINNING WORK.
2. EROSION CONTROL MEASURES SHALL INCLUDE, BUT NOT BE LIMITED TO THE FOLLOWING:
 - A. DIVERT UPSTREAM RUNOFF FROM FLOWING THROUGH THE CONSTRUCTION SITE.
 - B. DELAY STRIPPING TOPSOIL UNTIL REQUIRED FOR CONSTRUCTION.
 - C. PROTECT STORM SEWER INLETS WITH SILT FENCE OR EROSION CONTROL BALES.
 - D. PROMPT REMOVAL OF EXCAVATED MATERIAL.
 - E. PROPER STORAGE OF BACKFILL AND BEDDING MATERIALS INCLUDING PLACING SILT FENCE OR EROSION CONTROL BALES ON THE DOWNSLOPE SIDES OF SPILL FILLS.
 - F. CONSTRUCTION OF GRAVEL ACCESS ROADS TO CONSTRUCTION SITES TO PREVENT SEDIMENT FROM BEING TRACKED ONTO ROADWAYS.
 - G. PROMPT (SAME DAY) CLEANUP OF MATERIAL TRACKED ONTO ADJACENT STREETS.
 - H. TIMELY RESTORATION OF DAMAGED SURFACE AREAS.
 - I. TEMPORARY SEEDING: ALL AREAS THAT WILL REMAIN DISTURBED AFTER OCTOBER 15, MUST BE TEMPORARILY SEEDDED AS OF THAT DATE.
 - J. IF LATE SEASON CONSTRUCTION AND SEEDING OCCUR, A TYPE A OR B POLYMER SHALL BE USED TO STABILIZE THE SOIL UNTIL A GOOD VEGETATIVE COVER CAN BE ESTABLISHED. ALL POLYMERS SHALL BE APPLIED IN ACCORDANCE WITH WISCONSIN CONSERVATION PRACTICE STANDARD 1050 "LAND APPLICATION OF ANIONIC POLYACRYLAMIDE".
3. TEMPORARY EROSION CONTROL MEASURES
 - A. CONSTRUCT TEMPORARY EROSION CONTROL MEASURES, WHERE EROSION IS LIKELY TO BE A PROBLEM, PRIOR TO BEGINNING WORK ON THAT SECTION(S) OF THE PROJECT.
 - B. TEMPORARY EROSION CONTROL MEASURES SHALL BE MAINTAINED UNTIL AFTER PERMANENT EROSION CONTROL, LIKE SEEDING OR SODDING, HAS BEEN ESTABLISHED.
 - C. IF PERMANENT EROSION CONTROL MEASURES AREN'T FULLY IMPLEMENTED IN CURRENT CONSTRUCTION SEASONS MAINTAIN ALL NECESSARY TEMPORARY EROSION CONTROL MEASURES UNTIL AFTER PERMANENT MEASURES HAVE BEEN COMPLETED IN THE FOLLOWING YEAR.
 - D. CONDUCT ALL DEMATERING IN ACCORDANCE WITH WISCONSIN CONSERVATION PRACTICE STANDARD 1061 "DEMATERING".
4. AREAS THAT HAVE BEEN FINISHED GRADED MUST BE TOPSOILED, SEEDDED AND MULCHED WITHIN 7 DAYS. EROSION MAT SHALL BE INSTALLED IF DESIGNATED ON THE PLAN.
5. TEMPORARY STOCKPILE SHALL BE SEEDDED AND MULCHED IF STOCKPILE IS INACTIVE FOR A PERIOD GREATER THAN 7 DAYS.
6. INSPECT ALL EROSION CONTROLS ONCE PER WEEK AND WITHIN 24 HOURS OF A RAINFALL OF 0.5 INCHES OR GREATER. REPAIRS OF EROSION CONTROLS AND/OR REPLACEMENT OF SILT FENCE MUST OCCUR WITHIN 24 HOURS OF COMPLETED INSPECTION.
7. REMOVE EROSION CONTROL MEASURES (TEMPORARY AND PERMANENT) WHEN AN AREA OR THE ENTIRE SITE HAS ACHIEVED A MINIMUM OF 70% PERMANENT VEGETATIVE COVER.
8. A NOTICE OF TERMINATION OF PERMIT COVERAGE MUST BE FILED WHEN EROSION CONTROLS HAVE BEEN REMOVED FROM THE SITE.

LEGEND

- X---X--- SILT FENCE
- - - - - EXISTING CONTOUR
- ○ ○ ○ ○ EXISTING MANHOLE
- ○ ○ ○ ○ EXISTING STORM INLET
- ○ ○ ○ ○ EXISTING STORM SEWER
- ○ ○ ○ ○ PROPOSED CONTOUR
- ○ ○ ○ ○ INLET PROTECTION
- ○ ○ ○ ○ EROSION CONTROL BALES



REPORT IS 811, BY MEASURE ENGINEERING ASSOCIATES
 ALL RIGHTS RESERVED. NO PART OF THESE DRAWINGS MAY
 BE REPRODUCED OR TRANSMITTED IN ANY FORM OR BY
 ANY MEANS, ELECTRONIC OR MECHANICAL, WITHOUT THE
 PERMISSION OF MEASURE ENGINEERING ASSOCIATES.

EROSION CONTROL PLAN

GOOD HARVEST MARKET II, LLC

1850 MEADOW LANE WAUKESHA, WI. 262-544-9380
 FILE NAME: W:\USERS\jheff\goodharvest\13025 E8.dwg JOB NUMBER: 08-15-13-025

5417 North 118th Court
 (414) 616-4880
 Milwaukee, Wisconsin 53225
 FAX (414) 616-4885

PLOTTING SCALE: 1" = 40'
 DESIGNED BY: KCH
 DRAWN BY: JBB
 CHECKED BY: KCH
 DATE: MAY 28, 2014

| NO. | ITEM | DATE |
|-----|------|------|
| | | |
| | | |

SHEET NO. **C200**
 08-15-13-025