

### PLANT SCHEDULE

CANOPY TREES					
CODE	SCIENTIFIC NAME	COMMON NAME	QTY.	PLANTING SIZE	MATURE SIZE
ACFR	<i>Acer x freemanii</i> 'Jeffershed'	Autumn Blaze Maple	2	2.5' Cal. B4B	H-45', W-30'
ACFRR	<i>Acer platanoides</i> 'Royal Red'	Royal Red Maple	1	2.5' Cal. B4B	H-35', W-25'
ACRBB	<i>Acer rubrum</i> 'Burgundy Belle' FP 1222	Burgundy Belle Red Maple	2	2.5' Cal. B4B	H-45', W-25'
BENI	<i>Betula nigra</i>	River Birch	3	12' B4B, multi-stem	H-45', W-35'
GYDIE	<i>Gynocladus dioicus</i> 'Espresso-JF8'	Espresso Kentucky Coffee Tr.	1	2.5' Cal. B4B	H-50', W-35'
QUINA	<i>Quercus macrocarpa</i>	Bur Oak	1	2.5' Cal. B4B	H-75', W-75'
QUROB	<i>Quercus robur x bicolor</i> 'Long'	Regal Prince Oak	5	2.5' Cal. B4B	H-45', W-18'
TIAMB	<i>Tilia americana</i> 'Boulevard'	Boulevard American Linden	3	2.5' Cal. B4B	H-50', W-25'

ORNAMENTAL TREES					
CODE	SCIENTIFIC NAME	COMMON NAME	QTY.	PLANTING SIZE	MATURE SIZE
AMGAB	<i>Amelanchier x grandiflora</i> 'Autumn Brilliance'	Autumn Brilliance Serviceberry	1	8' B4B, multi-stem	H-20', W-15'
MASBA	<i>Malus argentii</i> 'Select A' FP 12621	Firebird Crabapple	5	15' Cal. B4B	H-8', W-12'
PYCAC	<i>Pyrus calleryana</i> 'Chanticleer'	Cleveland Select Pear	2	15' Cal. B4B	H-40', W-15'
SYRIS	<i>Syringa reticulata</i> 'Ivory Silk'	Ivory Silk Japanese Tree Lilac	6	8' B4B, multi-stem	H-25', W-15'

EVERGREEN TREES					
CODE	SCIENTIFIC NAME	COMMON NAME	QTY.	PLANTING SIZE	MATURE SIZE
PIABC	<i>Picea abies</i> 'Cupressina'	Columnar Norway Spruce	3	6' Tall B4B	H-20', W-8'
PIFFA	<i>Picea pungens</i> 'Fat Albert'	Fat Albert Spruce	2	6' Tall B4B	H-20', W-15'
PINI	<i>Pinus nigra</i>	Austrian Pine	6	6' Tall B4B	H-50', W-20'
PIST	<i>Pinus strobus</i>	Eastern White Pine	5	6' Tall B4B	H-50', W-20'

EVERGREENS / BROADLEAF EVERGREEN SHRUBS					
CODE	SCIENTIFIC NAME	COMMON NAME	QTY.	PLANTING SIZE	MATURE SIZE
JUCHM	<i>Juniperus chinensis</i> 'Mountbatten'	Mountbatten Chinese Juniper	23	4' Tall B4B	H-12', W-5'
JUCSG	<i>Juniperus chinensis</i> 'Sea Green'	Sea Green Juniper	23	18' Spread Pot	H-4', W-6'
THOS	<i>Thuja occidentalis</i> 'Smaragd'	Emerald Green Arborvitae	30	4' Tall B4B	H-15', W-4'

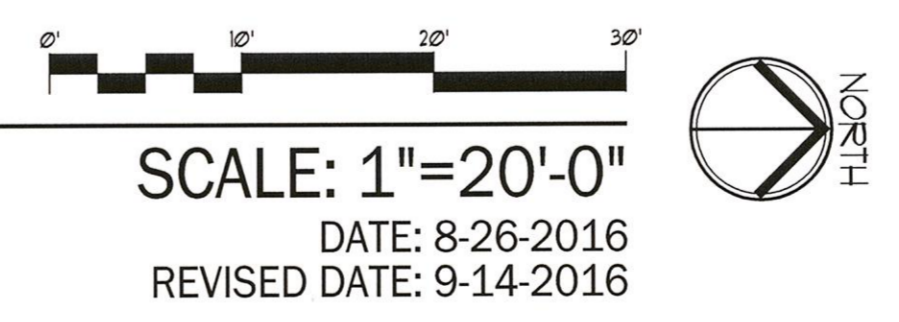
DECIDUOUS SHRUBS					
CODE	SCIENTIFIC NAME	COMMON NAME	QTY.	PLANTING SIZE	MATURE SIZE
ARMAM	<i>Aronia melanocarpa</i> 'Autumn Magic'	Autumn Magic Chokeberry	11	24" Tall B4B	H-5', W-4'
COAB	<i>Cornus alba</i> 'Bailhelo'	Ivory Halo Dogwood	6	3' Tall B4B	H-6', W-6'
EUALC	<i>Euonymus alatus</i> 'Compactus'	Dwarf Burning Bush	9	24" Tall B4B	H-5', W-7'
HYPAJ	<i>Hydrangea paniculata</i> 'Jani'	Little Lime Hydrangea	3	18" Tall Pot	H-4', W-4'
HYPAL	<i>Hydrangea paniculata</i> 'LimeLight'	LimeLight Hydrangea	13	18" Tall Pot	H-7', W-6'
PHOLD	<i>Physocarpus opulifolius</i> 'Little Devil'	Little Devil Ninebark	19	24" Tall Pot	H-4', W-4'
PHOPM	<i>Physocarpus opulifolius</i> 'Monlo'	Purple Leaf Ninebark	7	3' Tall B4B	H-7', W-8'
RORAD	<i>Rosa</i> 'RADrazz'	Knock Out Rose	32	18" Tall Pot	H-3', W-3'
RORAT	<i>Rosa x 'Radtko'</i> F.P. #16202	Double Knock Out Rose	15	18" Tall Pot	H-4', W-4'
SPBAT	<i>Spiraea betulifolia</i> 'Tor'	Tor Birchleaf Spirea	22	18" Tall Pot	H-3', W-3'
SPBUG	<i>Spiraea x bumalda</i> 'Goldflame'	Goldflame Spirea	16	18" Tall Pot	H-3', W-4'
SPMC	<i>Spiraea x bumalda</i> 'Magic Carpet'	Magic Carpet Spirea	19	15" Tall Pot	H-2', W-2'
SYMEP	<i>Syringa meyeri</i> 'Palibin'	Dwarf Korean Lilac	13	2" Tall B4B	H-5', W-7'
VIDBM	<i>Viburnum dentatum</i> 'Blue Muffin'	Blue Muffin Viburnum	5	3' Tall B4B	H-6', W-6'
WEFDH	<i>Weigela florida</i> 'Dark Horse'	Dark Horse Weigela	15	18" Tall Pot	H-3', W-3'
WEFUF	<i>Weigela florida</i> 'Wings of Fire'	Wings of Fire Weigela	8	24" Tall Pot	H-4', W-4'

PERENNIALS / GRASSES / VINES					
CODE	SCIENTIFIC NAME	COMMON NAME	QTY.	PLANTING SIZE	SPACING
CAAC	<i>Calamagrostis acutiflora</i> 'Karl Foerster'	Karl Foerster Feather Reed Grass	86	#1 Pot	24" O.C.
CHBE	<i>Chrysanthemum</i> 'Becky'	Becky Shasta Daisy	28	Quart Pot	18" O.C.
COVM	<i>Coreopsis verticillata</i> 'Moonbeam'	Moonbeam Coreopsis	9	Quart Pot	18" O.C.
HAMA	<i>Hakonechloa macra aureola</i>	Golden Variegated Hakone Grass	24	#1 Pot	24" O.C.
HEGB	<i>Hemerocallis</i> 'Going Bananas'	Going Bananas Daylily	11	#1 Pot	18" O.C.
HESO	<i>Hemerocallis</i> 'Stella de Oro'	Stella de Oro Daylily	121	Quart Pot	18" O.C.
MISIP	<i>Miscanthus sinensis purpurascens</i>	Flamegrass	20	#1 Pot	36" O.C.
NEUL	<i>Nepeta x 'Walker's Low'</i>	Walker's Low Catmint	67	Quart Pot	24" O.C.
PANO	<i>Panicum virgatum</i> 'Northwinds'	Northwinds Switch Grass	14	#1 Pot	24" O.C.
FEAL	<i>Penisetum alopecuroides</i> 'Hämel'	Dwarf Hämel Fountain Grass	42	#1 Pot	18" O.C.
FEALS	<i>Perovskia atriplicifolia</i> 'Little Spire'	Little Spire Russian Sage	68	#1 Pot	18" O.C.
RUFU	<i>Rudbeckia fulgida</i> var. <i>fulgida</i>	Fulgida Black-eyed Susan	42	Quart Pot	18" O.C.
SAMN	<i>Salvia</i> 'May Night'	May Night Meadow Sage	62	Quart Pot	15" O.C.
SEMA	<i>Sedum Matrona</i>	Matrona Sedum	64	#1 Pot	18" O.C.

# COAST WASH EXPRESS - WAUKESHA, WI

## CONCEPTUAL LANDSCAPE PLAN



PREPARED BY:



LANDSCAPE ARCHITECT:  
 PARAGON DESIGN GROUP, LLC  
 2776 North Sholes Avenue  
 Milwaukee, WI 53210  
 Tel: 414.449.1555  
 Fax: 414.449.2425

PREPARED FOR:

COAST CAR WASH LLC  
 905 Anitol Avenue  
 Waukesha, WI 53189