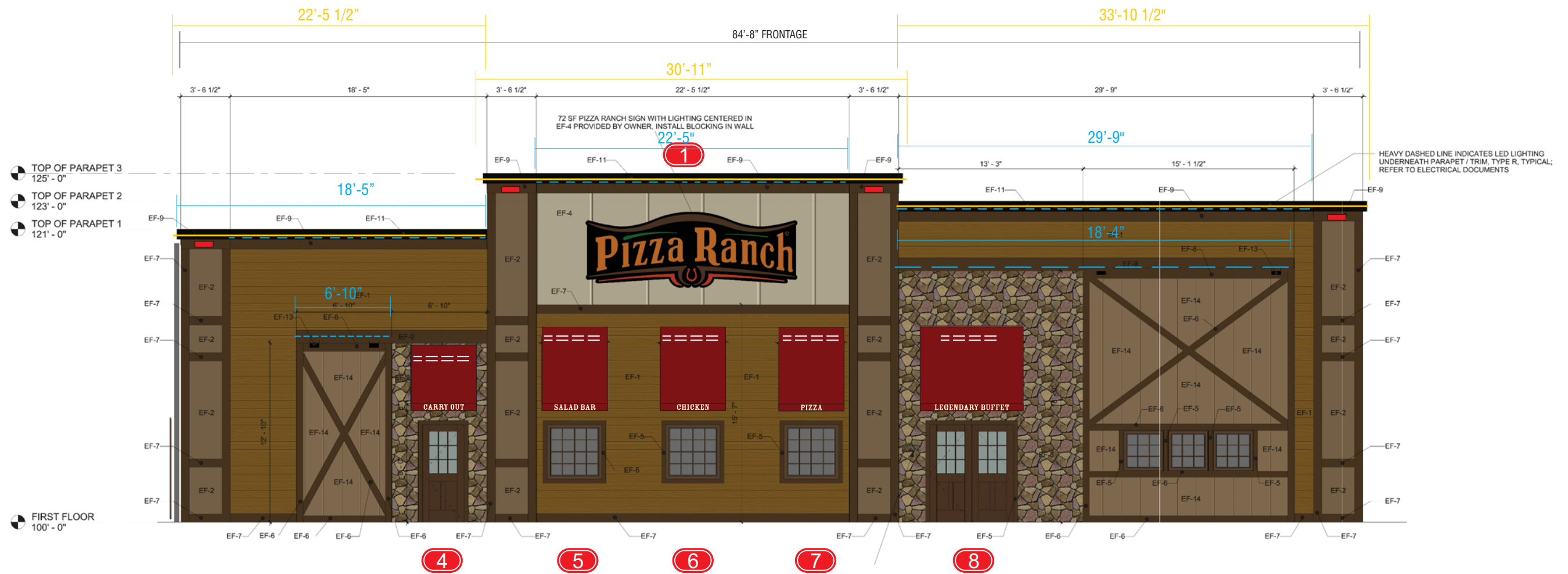


**SITE PLAN**





**PROPOSED SOUTH ELEVATION**

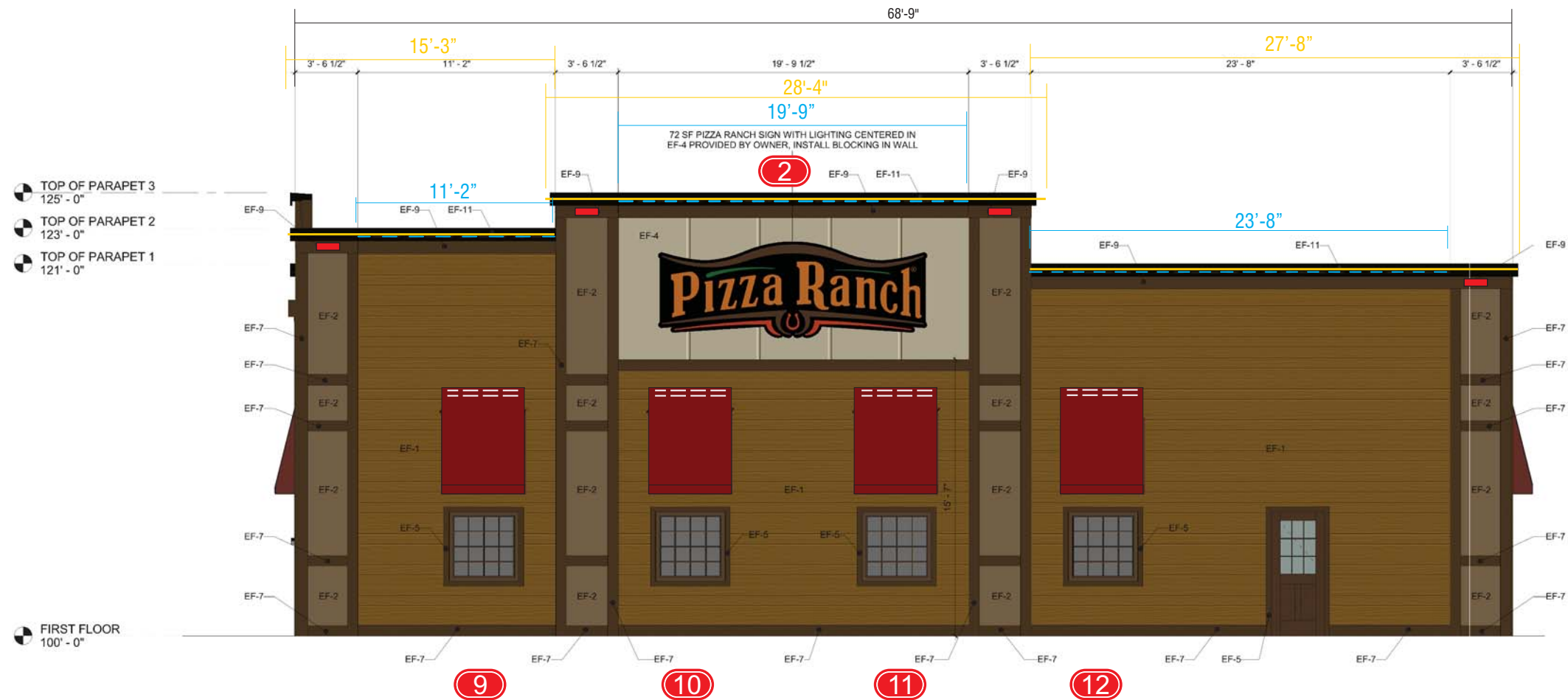
SCALE: 1/8" = 1'-0"

**ARCHITECTURAL LIGHTING CHART**

- L.E.D.BORDER TUBING = 87'-3" LINEAR FT. ( VERIFY )
- ALCOVE LIGHTING = 96'-9" LINEAR FT. ( VERIFY )
- ( 4 ) 15.75" X 5" DOWN LIGHTING ( LW12X1-WW AMERICAN LIGHTING )
- ( 10 ) 4'-0" SECTIONS OF SLOAN SLIMLINER AWNING LIGHTS ( 2 PER AWNING ).  
INCLUDED IN LIGHTING SCHEDULE AND TO BE PURCHASED BY ELECTRICIAN.  
 ( 2 ) 60w POWER SUPPLIES REQUIRED - REMOTE INSTALL ABOVE INTERIOR CEILING

Sq. Ft. Allowed	Sq. Ft. Proposed
<b>169.3 SQ. FT.</b>	<b>99.3 SQ. FT.</b>

No limit to the number of allowed wall signs. Total sign area has to stay under 2 square feet per feet of building width or 0.8 square feet per foot of lot width (on the street facing side), whichever is larger.



**PROPOSED EAST ELEVATION**

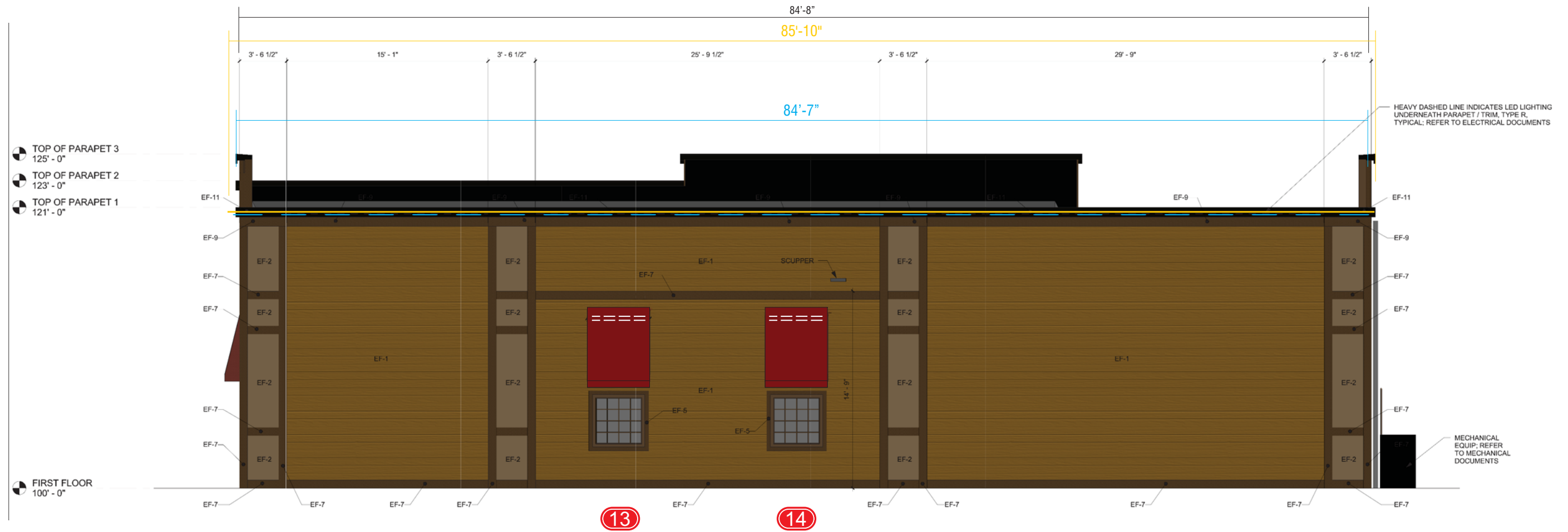
SCALE: 1/8" = 1'-0"

**ARCHITECTURAL LIGHTING CHART**

- L.E.D.BORDER TUBING = 71'-3" LINEAR FT. ( **VERIFY** )
- ALCOVE LIGHTING = 54'-7" LINEAR FT. ( **VERIFY** )
- ( 4 ) 15.75" X 5" DOWN LIGHTING ( LW12X1-WW AMERICAN LIGHTING )
- ( 8 ) 4'-0" SECTIONS OF SLOAN SLIMLINER AWNING LIGHTS ( 2 PER AWNING ).  
INCLUDED IN LIGHTING SCHEDULE AND TO BE PURCHASED BY ELECTRICIAN.  
( 2 ) 60w POWER SUPPLIES REQUIRED - REMOTE INSTALL ABOVE INTERIOR CEILING

Sq. Ft. Allowed	Sq. Ft. Proposed
137.5 SQ. FT.	93.3 SQ. FT.

No limit to the number of allowed wall signs. Total sign area has to stay under 2 square feet per feet of building width or 0.8 square feet per foot of lot width (on the street facing side), whichever is larger.



**PROPOSED NORTH ELEVATION**

SCALE: 1/8" = 1'-0"

NO SIGNAGE THIS ELEVATION

**ARCHITECTURAL LIGHTING CHART**

<p> L.E.D.BORDER TUBING = 85'-10" LINEAR FT. ( <b>VERIFY</b> )</p> <p> ALCOVE LIGHTING = 84'-7" LINEAR FT. ( <b>VERIFY</b> )</p>	<p> ( 4 ) 4'-0" SECTIONS OF SLOAN SLIMLINER AWNING LIGHTS ( 2 PER AWNING ).  <b>INCLUDED IN LIGHTING SCHEDULE AND TO BE PURCHASED BY ELECTRICIAN.</b>          ( 1 ) 60w POWER SUPPLIES REQUIRED - REMOTE INSTALL ABOVE INTERIOR CEILING</p>
--	--

**ADART**  
 700 Parker Sq STE 205  
 Flower Mound, TX 75028  
 T. 800.675.6353

<b>Project:</b> PIZZA RANCH	
<b>Location:</b> 926 Fleetwood drive Waukesha, WI	
<b>Date:</b> 07/18/17	
<b>Sales:</b> KB	<b>Designer:</b> MRG
<b>File Name:</b> PIZZA RANCH WAUKESHA WI-02	

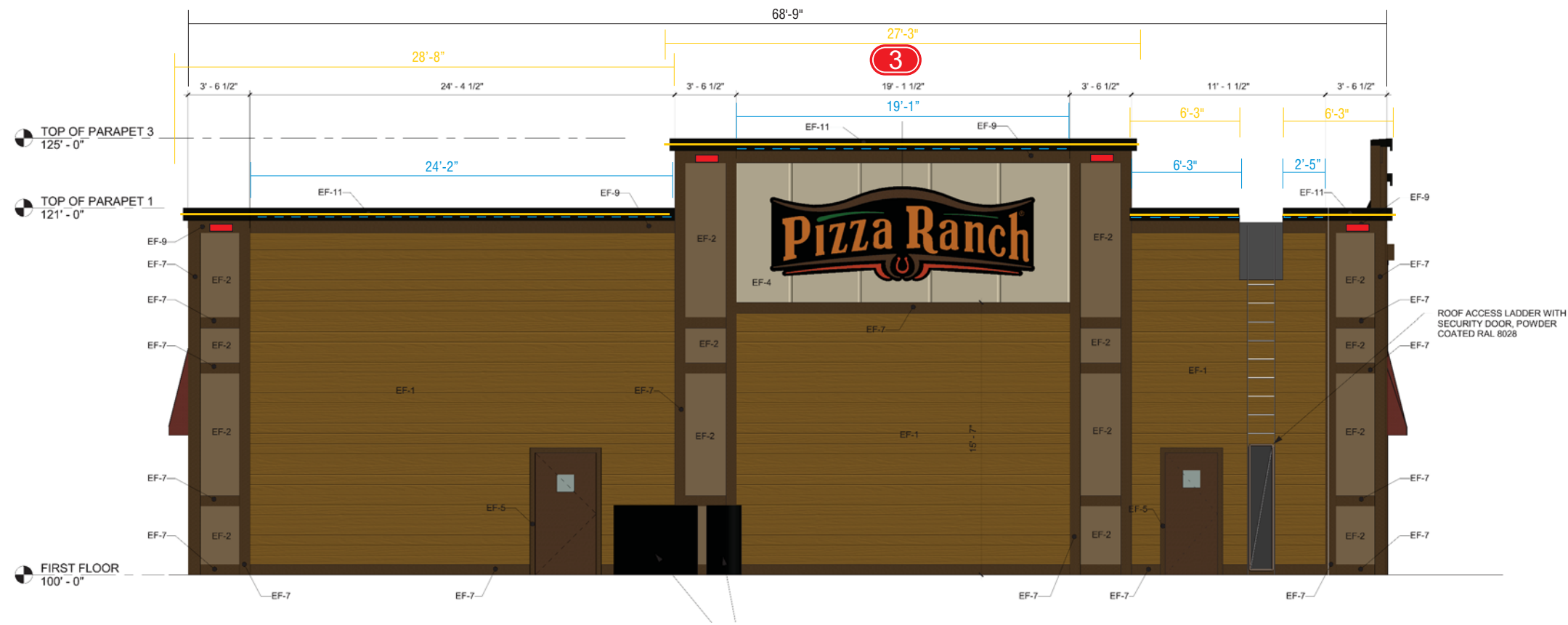
<b>Revision</b>
01-7/19/17-mrg-add code,reduce pylon ht to 20'-add lightinG
02-7/20/17-mrg-add pylon footing dims

<b>Approvals</b>
<b>Customer:</b>
<b>Landlord:</b>

**CONCEPTUAL DRAWINGS ONLY:**  
 Dimensions are approximate & may change due to construction factors or exact field conditions. Colors shown are as close as printing will allow. Always follow written specifications.

**ALL RIGHTS RESERVED:**  
 This design has been created for you in connection with a project being planned for you by AD ART. It may not be shown to anyone outside your organization, and may not be reproduced in any manner without prior consent.





**PROPOSED WEST ELEVATION**

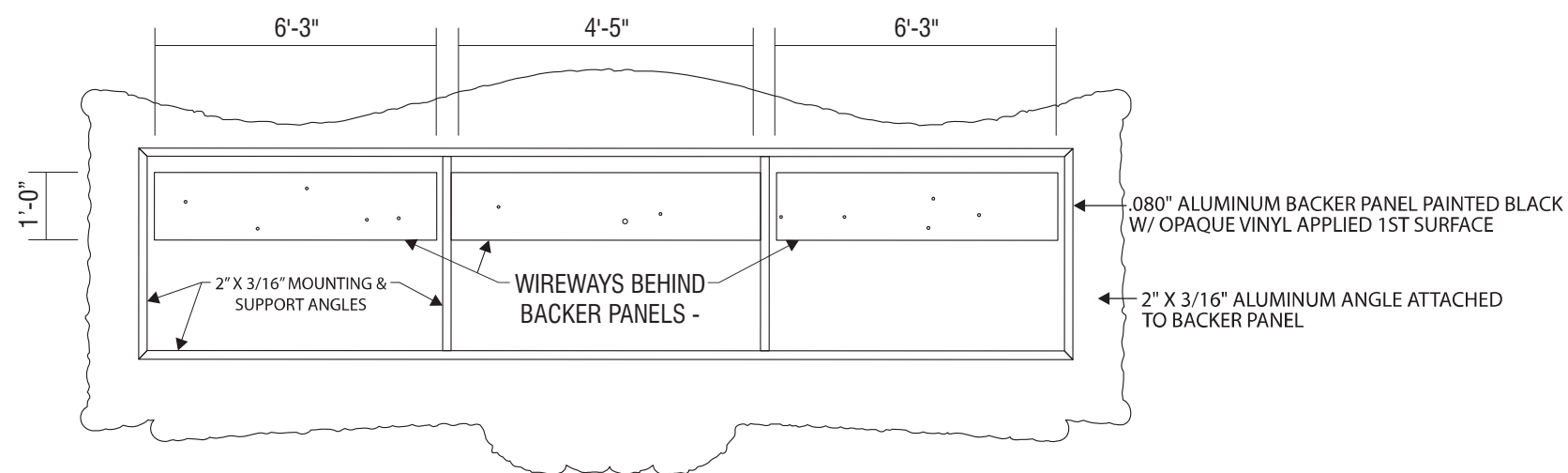
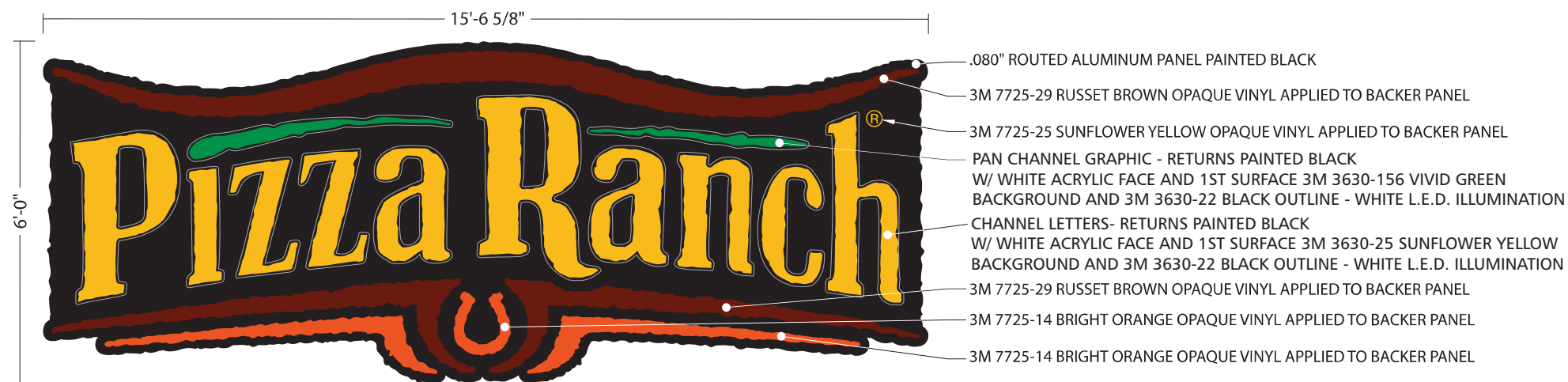
SCALE: 1/8" = 1'-0"

**ARCHITECTURAL LIGHTING CHART**

- L.E.D.BORDER TUBING = 64.5" LINEAR FT. ( **VERIFY** )
- ALCOVE LIGHTING = 49'-11" LINEAR FT. ( **VERIFY** )
- ( 4 ) 15.75" X 5" DOWN LIGHTING ( LW12X1-WW AMERICAN LIGHTING )

Sq. Ft. Allowed	Sq. Ft. Proposed
<b>137.5 SQ. FT.</b>	<b>93.3 SQ. FT.</b>

No limit to the number of allowed wall signs. Total sign area has to stay under 2 square feet per feet of building width or 0.8 square feet per foot of lot width (on the street facing side), whichever is larger.



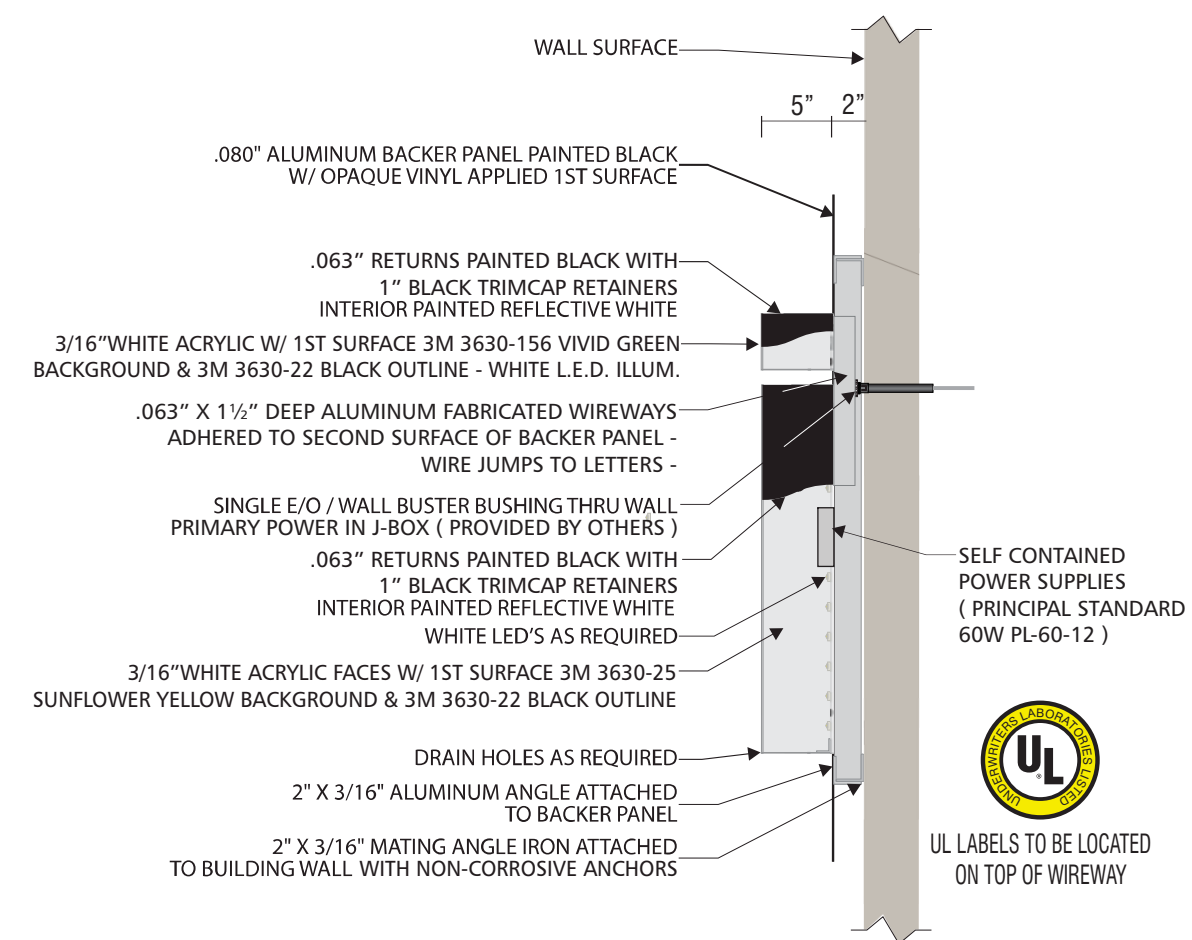
2ND SURFACE DETAIL

## FACE LIT CHANNEL LETTERS

SCALE: 3/8" = 1'-0"

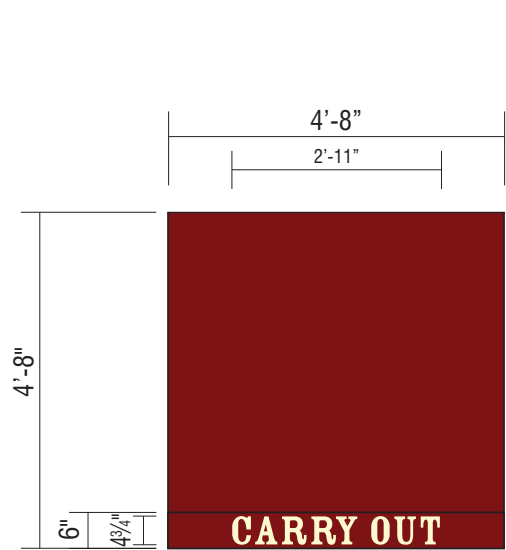
93.3 SQ. FT. EACH

- 1
- 2 (3) REQUIRED - FABRICATE AND INSTALL -
- 3

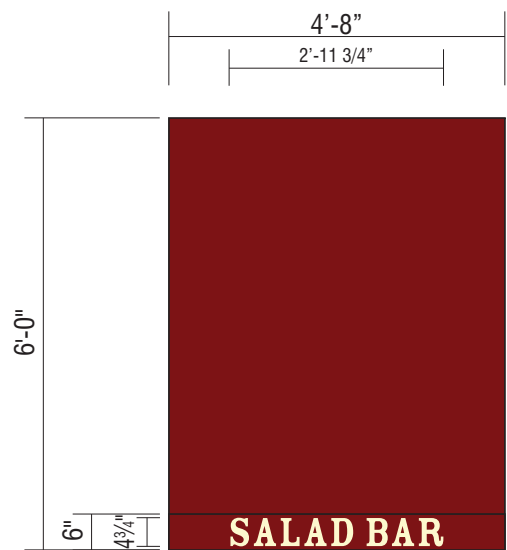


## DETAIL SECTION

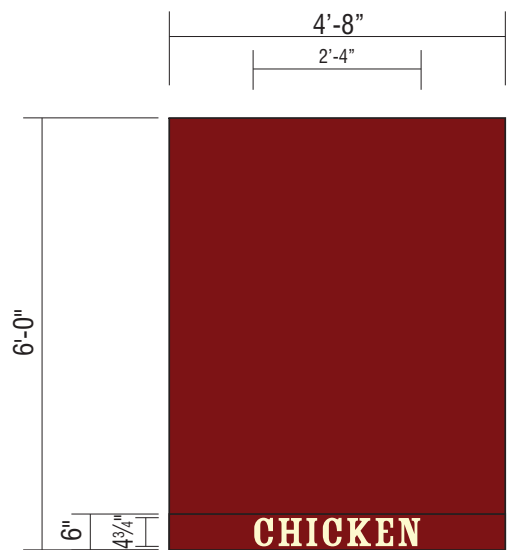
NOT TO SCALE



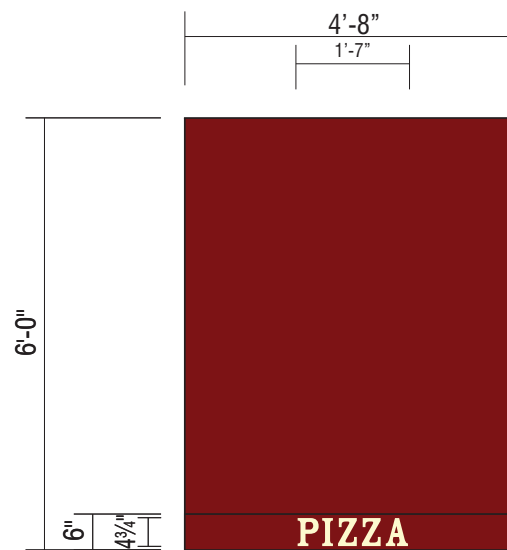
4 (1) REQUIRED - 1.2 SQ. FT. COPY



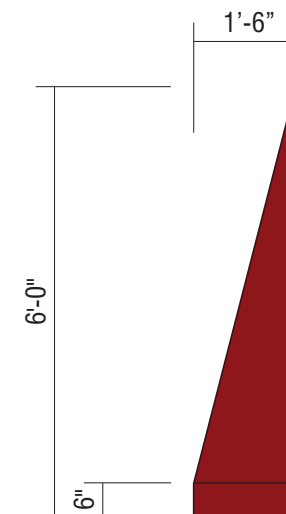
5 (1) REQUIRED - 1.2 SQ. FT. COPY



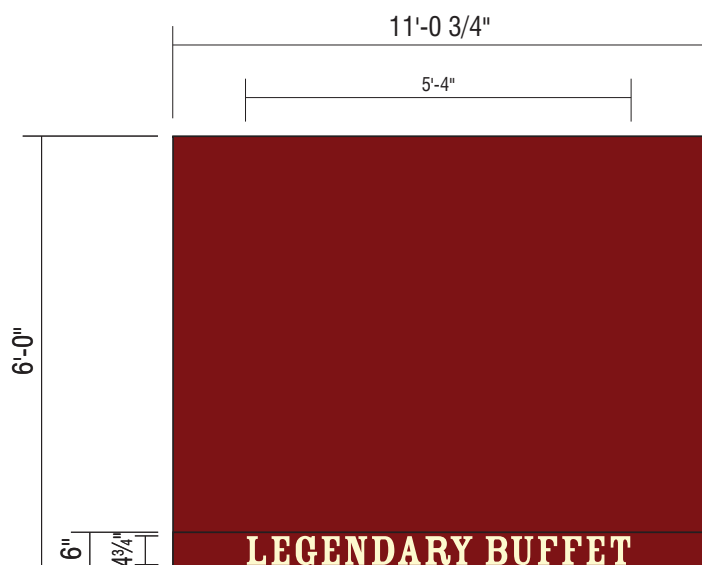
6 (1) REQUIRED - .9 SQ. FT. COPY



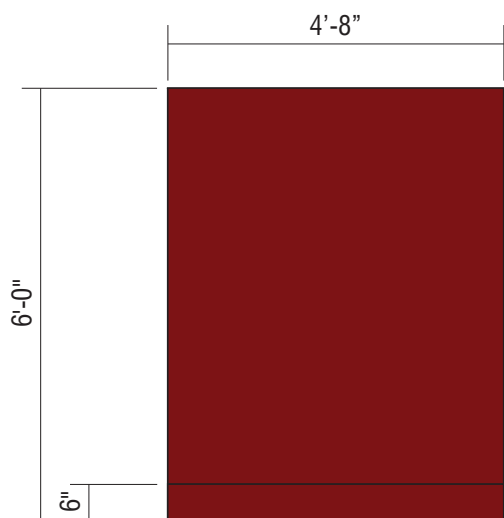
7 (1) REQUIRED - .6 SQ. FT. COPY



SIDE VIEW



8 (1) REQUIRED - 2.1 SQ. FT. COPY



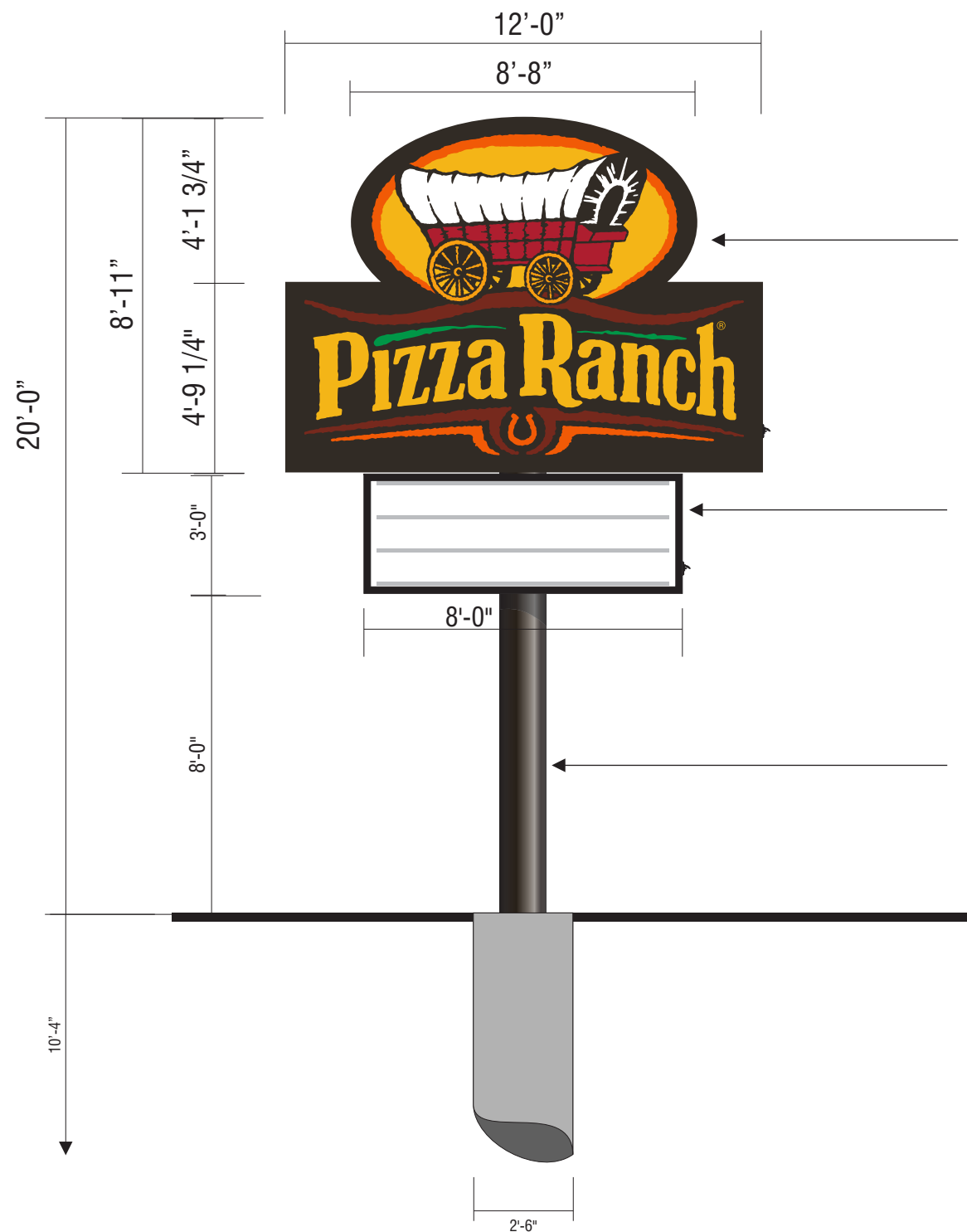
9 12 (6) REQUIRED  
10 13  
11 14

## AWNINGS

(5) REQUIRED - MANUFACTURE AND INSTALL -  
 1" ALUMINUM SQ. TUBE FRAMEWORK PAINTED BLACK -  
 SUNBRELLA FIRESIST BURGUNDY #88031 BURGUNDY AWNING MATERIAL ON FACE AND ENDS -  
 SILK SCREENED CREAM COLORED TEXT CENTERED ON 6" VALANCE -  
 INSTALL FLUSH TO BUILDING FACADE WITH APPROVED ANCHOR SYSTEM -

SCALE: 3/8" = 1'-0"

6.0 TOTAL COMBINED SQ. FT.

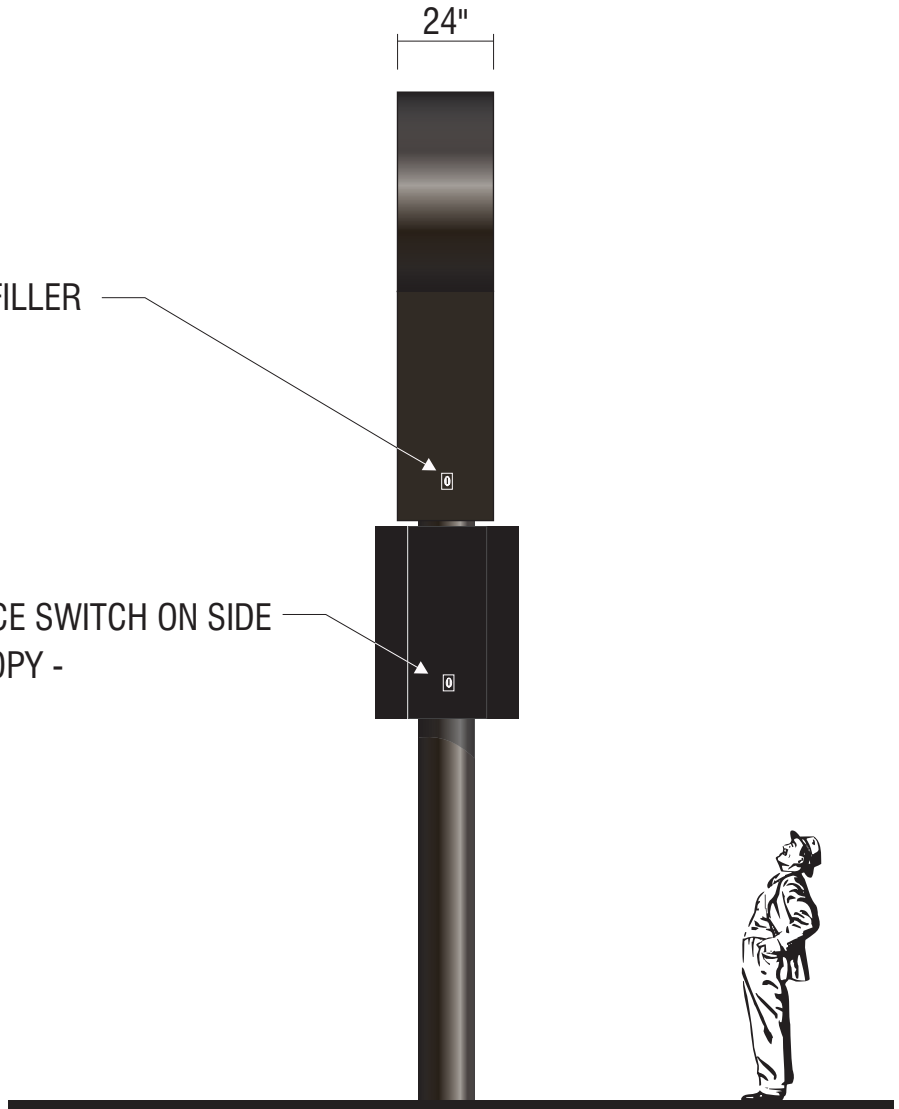


FABRICATED EXCELLART EXTRUDED ALUMINUM DF CABINET - PAINT FILLER AND RETAINERS DARK BRONZE - SERVICE SWITCH ON SIDE  
 WHITE FLEXIBLE FACES WITH FIRST SURFACE VINYL COPY AS NOTED IN COLOR CHART BELOW -  
 WHITE INTERNAL L.E.D. ILLUMINATION -  
**107.0 SQ. FT.**

( 2 ) SF ALUMINUM CABINETS & RETAINERS, PAINTED BLACK - SERVICE SWITCH ON SIDE  
 WHITE 3/16" LEXAN PANEL WITH 3 LINES OF 8" ON 9" CHANGABLE COPY -  
 MOUNT BACK TO BACK ON SUPPORT POLE WITH FABRICATED ALUMINUM FILLER PANELS PAINTED BLACK -  
 WHITE L.E.D. INTERNAL ILLUMINATION -  
**24 SQ. FT.**

STANDARD STEEL ROUND TUBE SUPPORT - 14"X .312 BASE PIPE  
 2'6" DIAMETER X 10'4" PIER FOOTING -

FINAL ELECTRICAL CONNECTIONS BY ADART IF PRIMARY ELECTRICAL PROVIDED AT TIME OF INSTALL -



**SIDE VIEW**



**U.L. LABELS REQUIRED**  
 INSTALL IN ACCORDANCE W/  
 NATIONAL ELECTRIC CODES

TRANS. PMS / CMYK COLOR CHART	
■ PMS 1655C	0c,85m,100y,0k
■ PMS BLACK C	63c,67m,75y,82k
■ PMS 187C	18c,100m,100y,16k
■ PMS 1235C	4c,31m,100y,0k
■ PMS 1375C	0c,46m,100y,0k
■ PMS 181C	33c,95m,100y,48k
■ PMS 355C	91c,16m,100y,4k
□ TRANS. WHITE	0c, 0m,0y,0k

**15 D/F PYLON**

( 1 ) REQUIRED - FABRICATE AND INSTALL -

SCALE: 1/4" = 1'-0"

131.0 TOAL COMBINED SQ. FT.

**ENGINEERING SURVEY REQUIRED PRIOR TO FABRICATION - EXACT PLACEMENT TO BE DETERMINED -**

**ADART**  
 700 Parker Sq STE 205  
 Flower Mound, TX 75028  
 T. 800.675.6353

**Project:** PIZZA RANCH  
**Location:** 926 Fleetwood drive  
 Waukesha, WI  
**Date:** 07/18/17  
**Sales:** KB **Designer:** MRG  
**File Name:** PIZZA RANCH WAUKESHA WI-02

**Revision**  
 01-7/19/17-mrg-add code,reduce pylon ht to 20'-  
 add lightinG  
 02-7/20/17-mrg-add pylon footing dims

**Approvals**  
**Customer:**  
**Landlord:**

**CONCEPTUAL DRAWINGS ONLY:**  
 Dimensions are approximate & may change due to construction factors or exact field conditions. Colors shown are as close as printing will allow. Always follow written specifications.  
**ALL RIGHTS RESERVED:**  
 This design has been created for you in connection with a project being planned for you by AD ART. It may not be shown to anyone outside your organization, and may not be reproduced in any manner without prior consent.

**SHEET**  
**8**