

Waukesha City Hall Waukesha, WI



1241 John Q Hammons Dr., Ste. 503 Madison, WI 53717 608.829.3701 bwbr.com

raSmith CONSULTANTS 16745 W. Bluemound Road Brookfield, WI 53005-9938 (262) 781-1000 rasmith.com raSmith Project No. 3170507 Project Manager TOM MORTENSEN

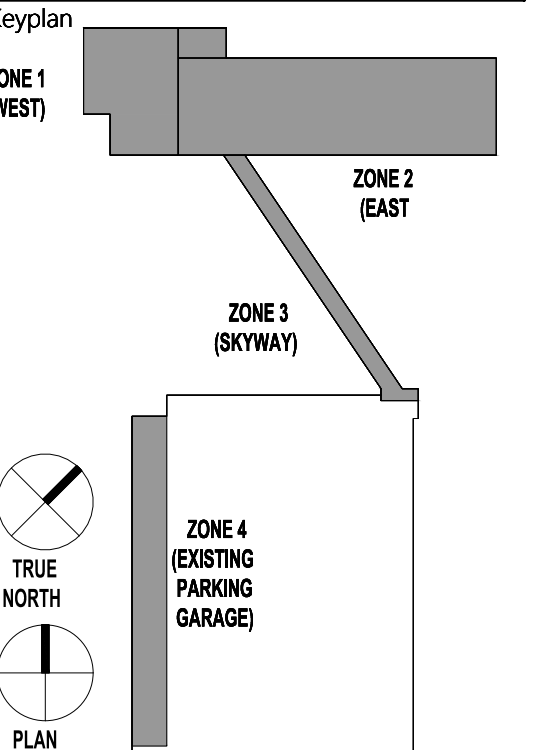
This document may be an electronic file or may be printed from an electronic file provided to the user. It is the sole responsibility of the user to ensure that the content and quality is consistent with the content and quality of the original documents on file at BWBR.

Name: Date: Lic./Reg. No. Issued For:

Item: Date: DD ISSUE 03/11/2019

NOT FOR CONSTRUCTION FOR REFERENCE ONLY

This Sheet may be a Reduced Copy. The bar above is 1" long on a Full Size Sheet. Drawing Scales apply to Full Size Sheets.

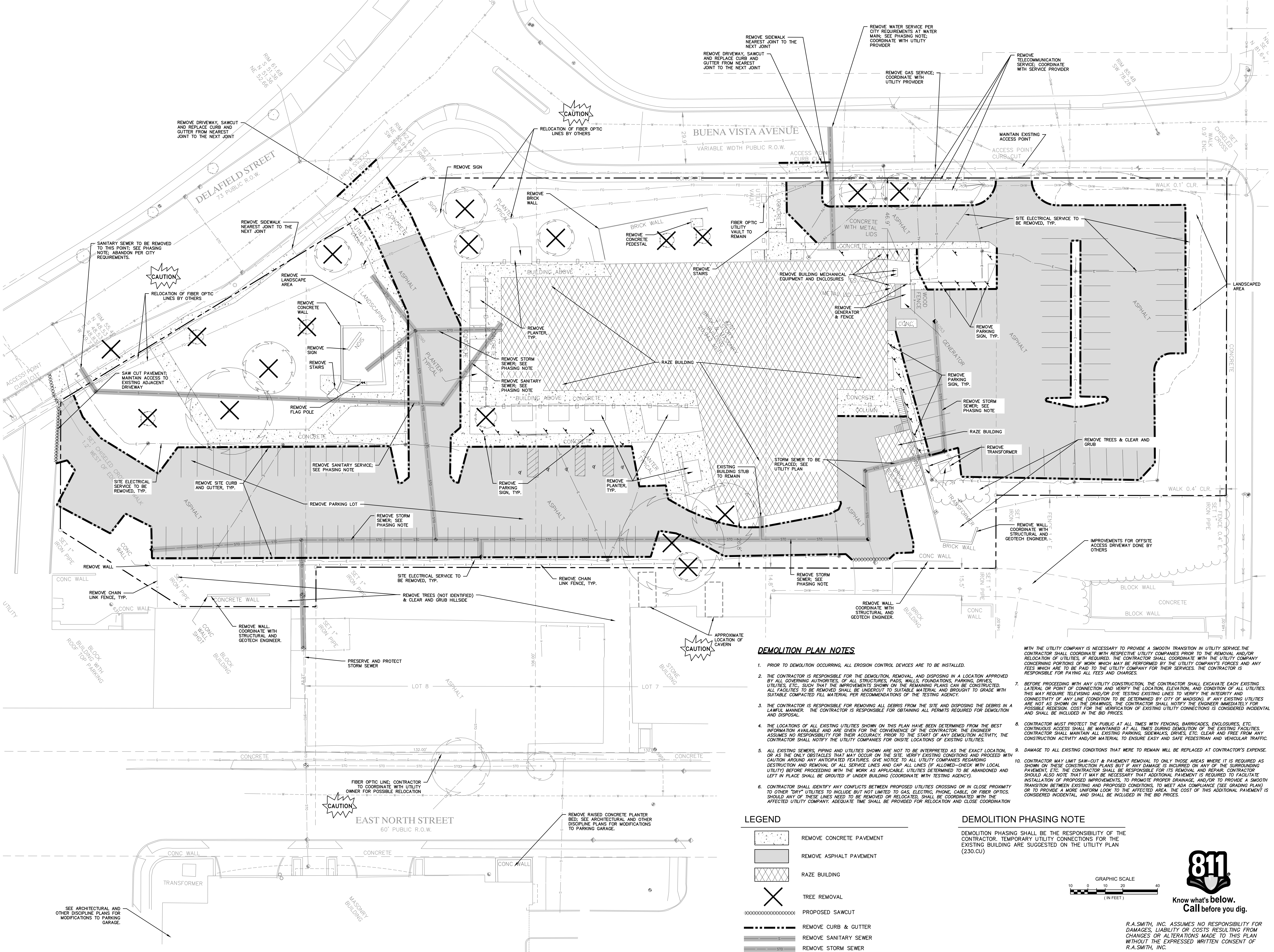


Comm. No. 3.2011000.00 Drawn

Sheet Title: DEMOLITION PLAN

Sheet No. 200.CD

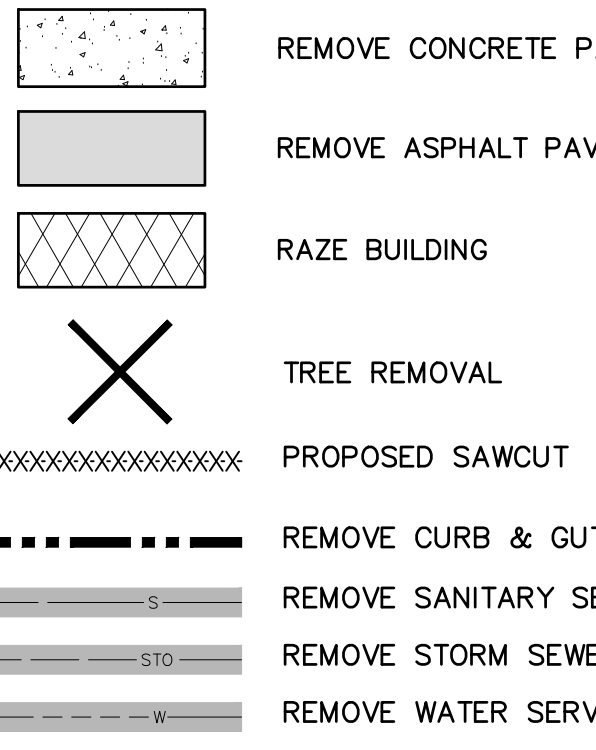
Copyright BWBR



DEMOLITION PLAN NOTES

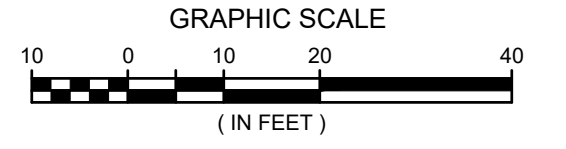
- 1. PRIOR TO DEMOLITION OCCURRING, ALL EROSION CONTROL DEVICES ARE TO BE INSTALLED.
2. THE CONTRACTOR IS RESPONSIBLE FOR THE DEMOLITION, REMOVAL, AND DISPOSING IN A LOCATION APPROVED BY ALL GOVERNING AUTHORITIES...
3. THE CONTRACTOR IS RESPONSIBLE FOR REMOVING ALL DEBRIS FROM THE SITE AND DISPOSING THE DEBRIS IN A LAWFUL MANNER...
4. THE LOCATIONS OF ALL EXISTING UTILITIES SHOWN ON THIS PLAN HAVE BEEN DETERMINED FROM THE BEST INFORMATION AVAILABLE...
5. ALL EXISTING SEWERS, PIPING AND UTILITIES SHOWN ARE NOT TO BE INTERPRETED AS THE EXACT LOCATION...
6. CONTRACTOR SHALL IDENTIFY ANY CONFLICTS BETWEEN PROPOSED UTILITIES CROSSING OR IN CLOSE PROXIMITY TO OTHER "DIP" UTILITIES...
7. BEFORE PROCEEDING WITH ANY UTILITY CONSTRUCTION, THE CONTRACTOR SHALL EXCAVATE EACH EXISTING LATERAL OR POINT OF CONNECTION AND VERIFY THE LOCATION, ELEVATION, AND CONDITION OF ALL UTILITIES...
8. CONTRACTOR MUST PROTECT THE PUBLIC AT ALL TIMES WITH FENCING, BARRICADES, ENCLOSURES, ETC...
9. DAMAGE TO ALL EXISTING CONDITIONS THAT WERE TO REMAIN WILL BE REPLACED AT CONTRACTOR'S EXPENSE.
10. CONTRACTOR MAY LIMIT SAW-CUT & PAVEMENT REMOVAL TO ONLY THOSE AREAS WHERE IT IS REQUIRED AS SHOWN ON THESE CONSTRUCTION PLANS...

LEGEND



DEMOLITION PHASING NOTE

DEMOLITION PHASING SHALL BE THE RESPONSIBILITY OF THE CONTRACTOR. TEMPORARY UTILITY CONNECTIONS FOR THE EXISTING BUILDING ARE SUGGESTED ON THE UTILITY PLAN (230.CU)



Know what's below. Call before you dig.

R.A.SMITH, INC. ASSUMES NO RESPONSIBILITY FOR DAMAGES, LIABILITY OR COSTS RESULTING FROM CHANGES OR ALTERATIONS MADE TO THIS PLAN WITHOUT THE EXPRESSED WRITTEN CONSENT OF R.A.SMITH, INC.

Vertical text on the left edge of the page.