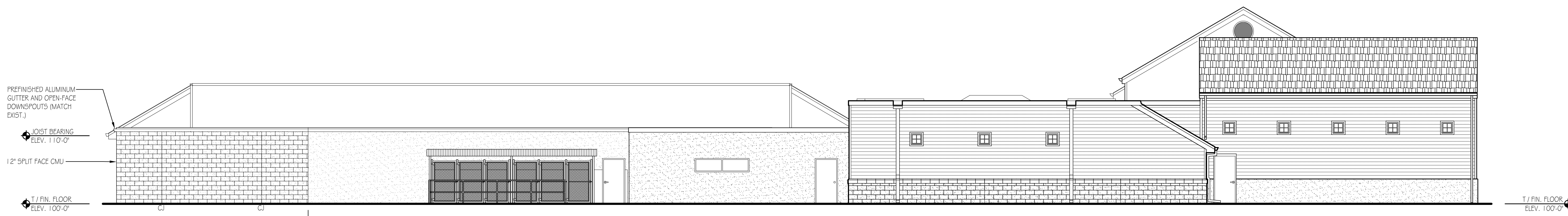
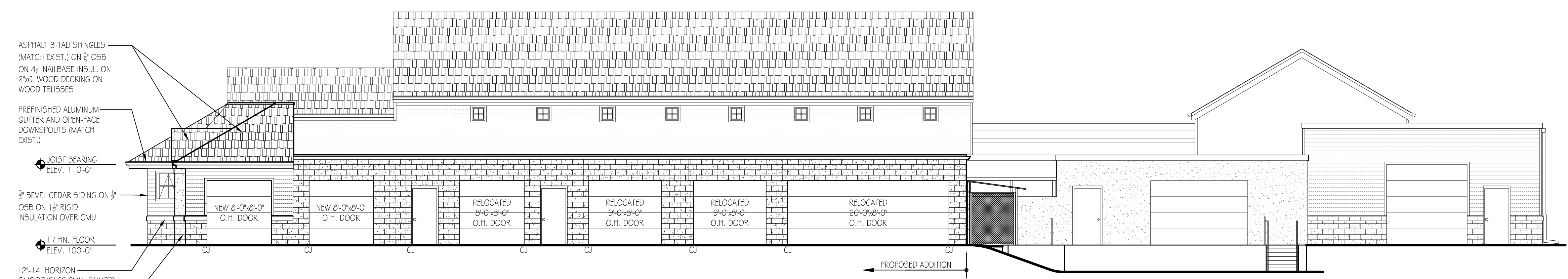


APPROVED BY: _____ DATE: _____
 DISCLAIMER: Information on this plan is deemed to be accurate, but is not guaranteed. *As Built* dimensions may vary slightly.

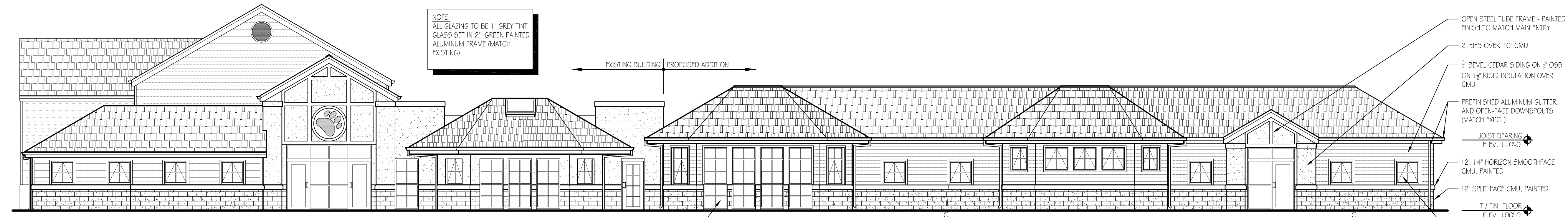
REVISIONS			
Rev.	Date	Description	By



EAST ELEVATION
 1/8" = 1'-0"



SOUTH ELEVATION
 1/8" = 1'-0"



WEST ELEVATION
 1/8" = 1'-0"

NOTE:
 ALL GLAZING TO BE 1" GREY TINT
 GLASS SET IN 2" GREEN PAINTED
 ALUMINUM FRAME (MATCH
 EXISTING)

TYPICAL TALL WINDOW -
 NOM. 2'-4 1/2" FIXED FRAME
 ALUMINUM WINDOW WITH 1" INSUL.
 GLASS, THERMAL BREAK, AND
 MUNTIN BARS BY SUPPLIER (PAINT
 TO MATCH EXIST.)

COPYRIGHT GERALD NELL INC., 2014 ALL RIGHTS RESERVED. THIS DRAWING IS NOT TO BE REPRODUCED, CHANGED, COPIED, DISSEMINATED OR ASSIGNED TO ANY PARTY IN ANY FORM OR MANNER WITHOUT FIRST OBTAINING THE EXPRESS WRITTEN PERMISSION OF GERALD NELL INC. THE CLIENT AGREES TO INDEMNIFY AND HOLD GERALD NELL INC. HARMLESS FROM ANY DAMAGES, LIABILITY, OR COST, INCLUDING ATTORNEY'S FEES AND COSTS OF DEFENSE ARISING FROM ANY CHANGES OR ALTERATIONS MADE BY ANYONE OTHER THAN GERALD NELL INC. OR FROM ANY REUSE OF THE DRAWINGS OR DATA WITHOUT THE PRIOR WRITTEN CONSENT OF GERALD NELL INC.

GERALD NELL INC.
 W229 N1680 WESTWOOD DRIVE
 WAUKESHA, WI 53186-1152
 262-513-33750

H.A.W.S.
701 NORTHVIEW ROAD
WAUKESHA, WISCONSIN

Drawn By	BLM
Date	05-09-16
Scale	1/8" = 1'-0"
Job Number	
Sheet Name	EXTERIOR ELEVATIONS
Sheet Number	A4.1

SHEET OF TOTAL SHEETS