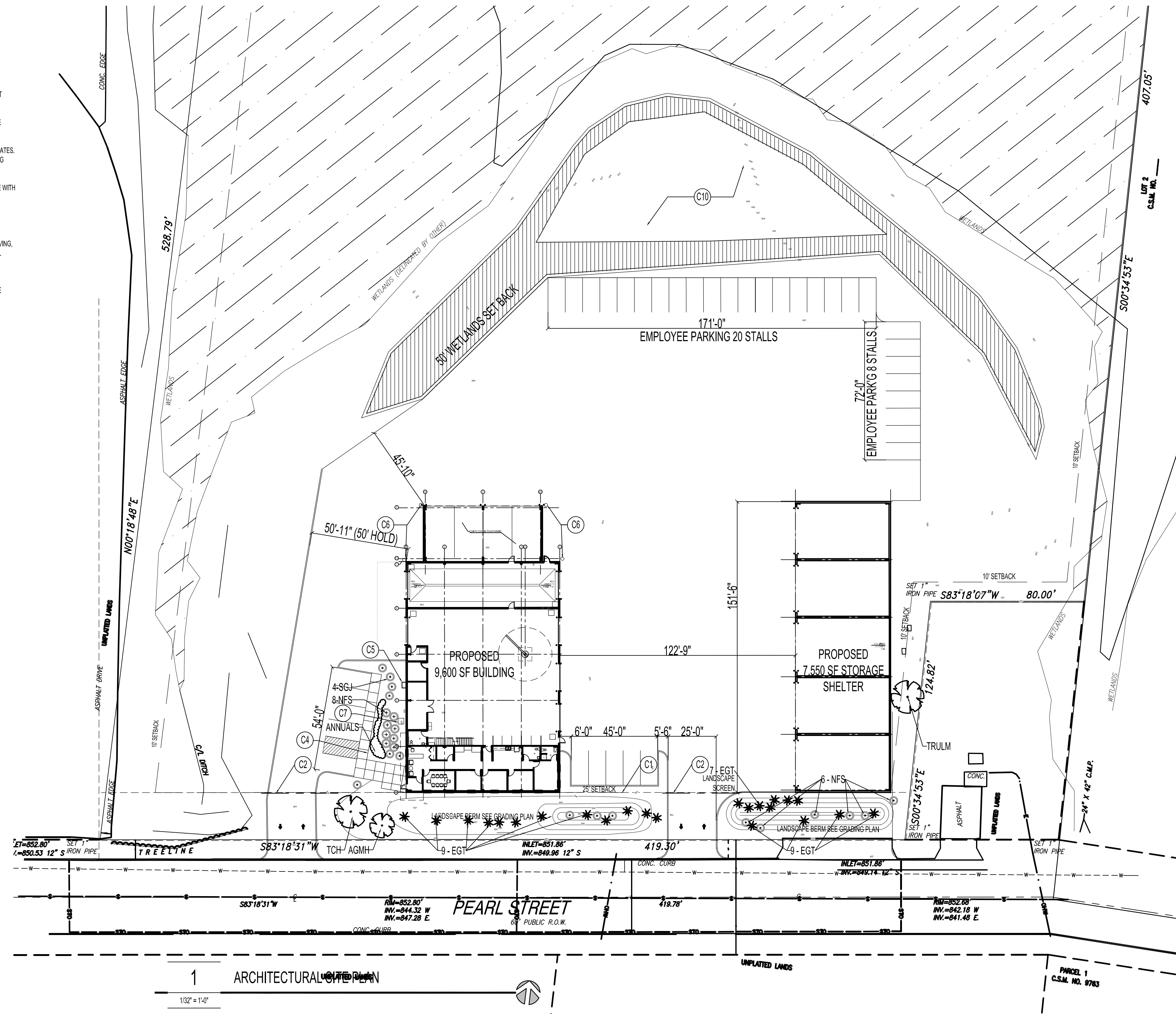


ARCHITECTURAL SITE PLAN GENERAL NOTES:

- A. CALL DIGGERS HOTLINE THREE (3) WORKING DAYS PRIOR TO THE START OF ANY WORK, 1-800-292-8889.
- B. EXISTING UTILITIES ARE SHOWN AS SHOWN ON CIVIL DRAWINGS ACCORDING TO THE BEST AVAILABLE INFORMATION. HOWEVER, LOCATIONS MAY NOT BE ACCURATE OR COMPLETE. CONTRACTOR SHALL HAVE ALL UTILITIES LOCATED PRIOR TO INITIATING EXCAVATION. CONTRACTOR SHALL COORDINATE WITH ALL UTILITY COMPANIES AS NECESSARY TO PROVIDE SERVICE TO THE SITE AND TO PERFORM WORK.
- C. CONTRACTOR SHALL FIELD VERIFY ALL EXISTING CONDITIONS, DIMENSIONS, AND COORDINATES. THE CONTRACTOR SHALL NOTIFY THE ARCHITECT OF ANY DISCREPANCIES BETWEEN EXISTING CONDITIONS AND THE CONTRACT DOCUMENTS.
- D. CONTRACTOR SHALL OBTAIN ALL PERMITS REQUIRED TO PERFORM WORK IN ACCORDANCE WITH REQUIREMENTS AND PROCEDURES OF ANY AND ALL AUTHORITIES HAVING JURISDICTION.
- E. CONTRACTOR SHALL REVIEW TOPSOIL, SALVAGE AND REVIEW WITH OWNER AND GENERAL CONTRACTOR PRIOR TO STARTING WORK.
- F. SEE CIVIL DRAWINGS FOR ADDITIONAL SITE INFORMATION, INCLUDING CURB/CURB CUT, PAVING, GRADING, UTILITIES HANDICAP SIGNAGE, PARKING LOCATIONS, AND EROSION CONTROL PLAN.
- G. SEE STRUCTURAL DRAWINGS FOR PLACEMENT OF STOOPS.
- J. SEE ELECTRICAL PLANS FOR LOCATIONS OF SITE ELECTRICAL ITEMS, INCLUDING ON GRADE EQUIPMENT, CONDUITS AND ELECTRICAL LINES, AND LIGHTING.

SITE PLAN KEY/NOTES:

- (C1) 8' HIGH VINYL COATED CHAINLINK FENCE - SEE 5/AS100 FOR ELEVATION.
- (C2) 8' HIGH POWER SLIDING GATE
- (C3) ACCESS CONTROL LOCATION FOR POWER OPERATED GATE
- (C4) ADA ACCESSIBLE PARKING SIGN
- (C5) GAS METER LOCATION
- (C6) 6" CONCRETE FILLED PAINTED PIPE BOLLARD
- (C7) GROUND MOUNTED BUILDING TRANSFORMER - SEE ELECTRICAL
- (C8) FIRE DEPARTMENT CONNECTION VALVE
- (C9) ENGINE BLOCK HEATER POST - PROVIDE QUAD OUTLET AT EACH LOCATION.
- (C10) STORM WATER POND - SEE CIVIL



1 ARCHITECTURAL SITE PLAN
1/32" = 1'-0"

LANDSCAPE SCHEDULE:

KEY	COMMON NAME	SIZE	ROOT	NOTES
TREES				
EGT	EMERALD GREEN THUJA ARBORVITAE	6' H	BB	
TCH	THORNLESS HAWTHORN	2.5-3" DIA	BB	
TRULM	TRIUMPH ELM	2.5-3" DIA	BB	
AGMH	AUTUMN GOLD MAIDENHAIR	2.5-3" DIA	BB	
SHRUBS				
NFS	NEON FLASH SPIREA	24" TALL	CONTAINER	
SGJ	SEA GREEN JUNIPER	18" TALL/WIDE	CONTAINER	

SITE DATA:

TOTAL SITE AREA:	5.76 ACRES (250,933 SF)
SITE ZONING:	M-2
TOTAL BUILDING AREA:	
SHOP OFFICE	9,600 SF
EQUIPMENT STORAGE	7,550 SF
TOTAL AREA OF PAVING	63,536 SF
TOTAL SITE IMPERVIOUS	80,635 SF
GREEN SPACE RATIO	32 % COVERED
PROVIDED CAR PARKING	37 (INCLUDING 2 ADA STALLS) 1 STALL PER 462 SF

PROJECT:
BEAUDRY SERVICES, INC.

OWNER:
BEAUDRY SERVICES, INC.
1522 Pearl St.
Waukesha, WI 53186

ARCHITECT:
KORB AND ASSOCIATES ARCHITECTS
648 N. Plankinton Ave.
Suite 240
Milwaukee, WI 53203

REVISION NO.	DATE

COMM NO.: 17007-01
SCALE: AS NOTED
PHASE: CHECK SET
DATE: 8/21/2017