



SWEET DESIGNS
JOAN M. SWEET
ARCHITECT

1435 STONEFIELD COURT
WAUKESHA, WISCONSIN
53186
(262) 896-0388

PROJECT:

INTERIOR
BUILD OUT
FOR:

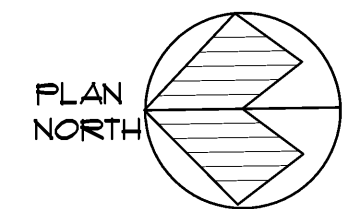
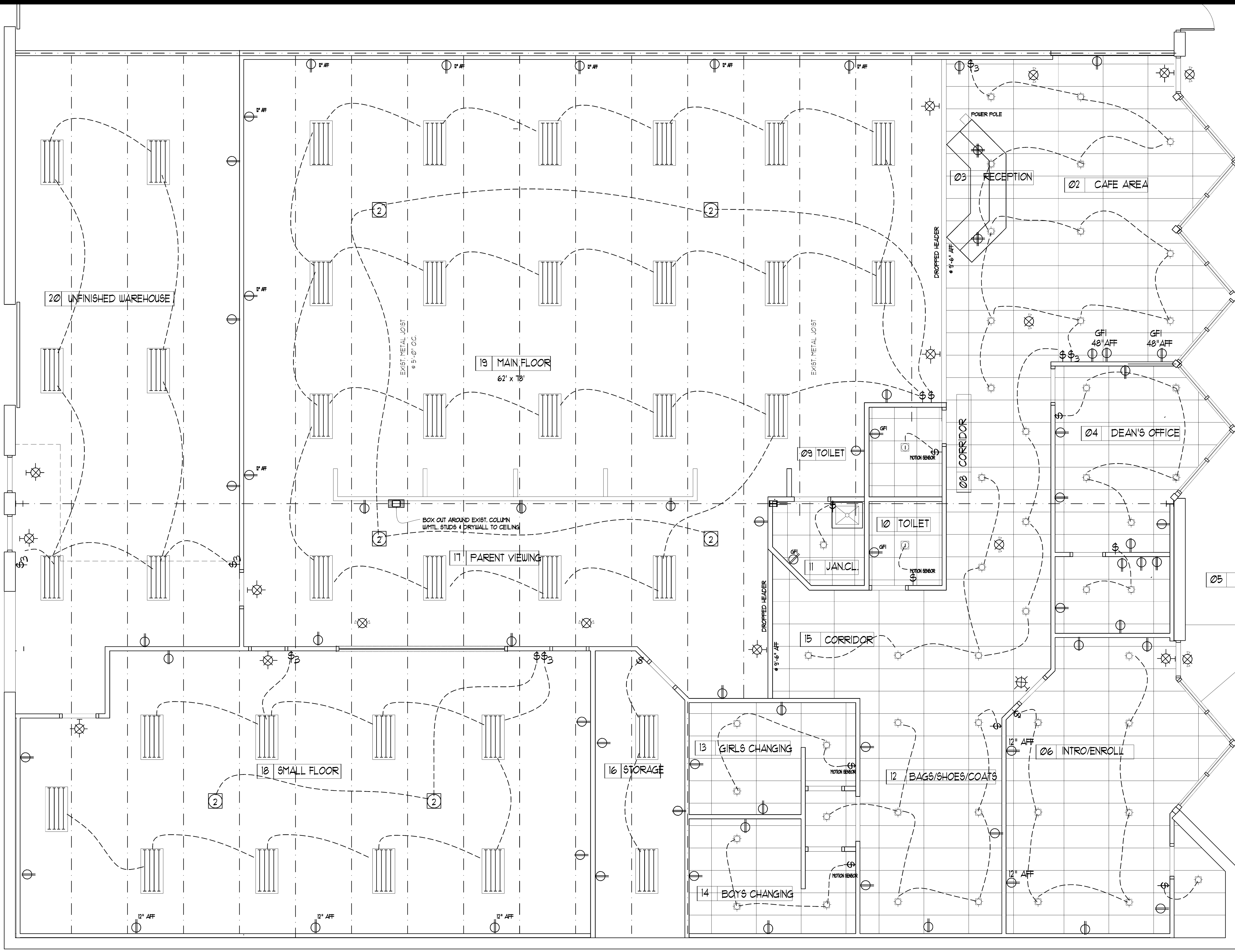
NORTHSTAR
GROUP LLC

2244 W. Bluemound
Road

PROJECT
LOCATION:
TENANT D
AMERICAN
DOJO

ELECTRICAL SYMBOLS

- ⊕_{EX} EXIST. DUPLEX OUTLET
- ⊖ NEW DUPLEX OUTLET
- ⌘ LIGHT SWITCH
- ⌘₃ 3 WAY LIGHT SWITCH
- ⊗ NEW EMERGENCY EXIT LIGHT W/ DIRECTIONAL ARROW
- ⊗ NEW EMERGENCY BATTERY POWERED EXIT LIGHT HUNG FROM CEILING
- ⊙ 6" RECESSED PAR-30 LAMP
- Ⓢ COMPUTER/INTERNET OUTLET- VERIFY LOCATION W/OWNER
- Ⓛ COMBO EXHAUST/INCANDESCENT RECESSED LIGHT FIXTURE
- Ⓜ CEILING FAN
- ⌘ SUSPENDED 24 X48 4 LAMP FIXTURE W/ REFLECTORS BOTTOM OF FIXTURE @ 16'-0" AFF
- Ⓢ SOUND & SECURITY SYSTEM BY OWNER
- ⊗ BATTERY POWERED EMERGENCY LIGHTS
- ⊗_↑ BATTERY POWERED EMERGENCY EXIT LIGHTS W/DIRECTIONAL ARROWS



REFLECTED CEILING PLAN

SCALE 1/4"=1'-0"

CEILING PLAN

DATE :
04/01/15

SHEET NO.

△ = 4