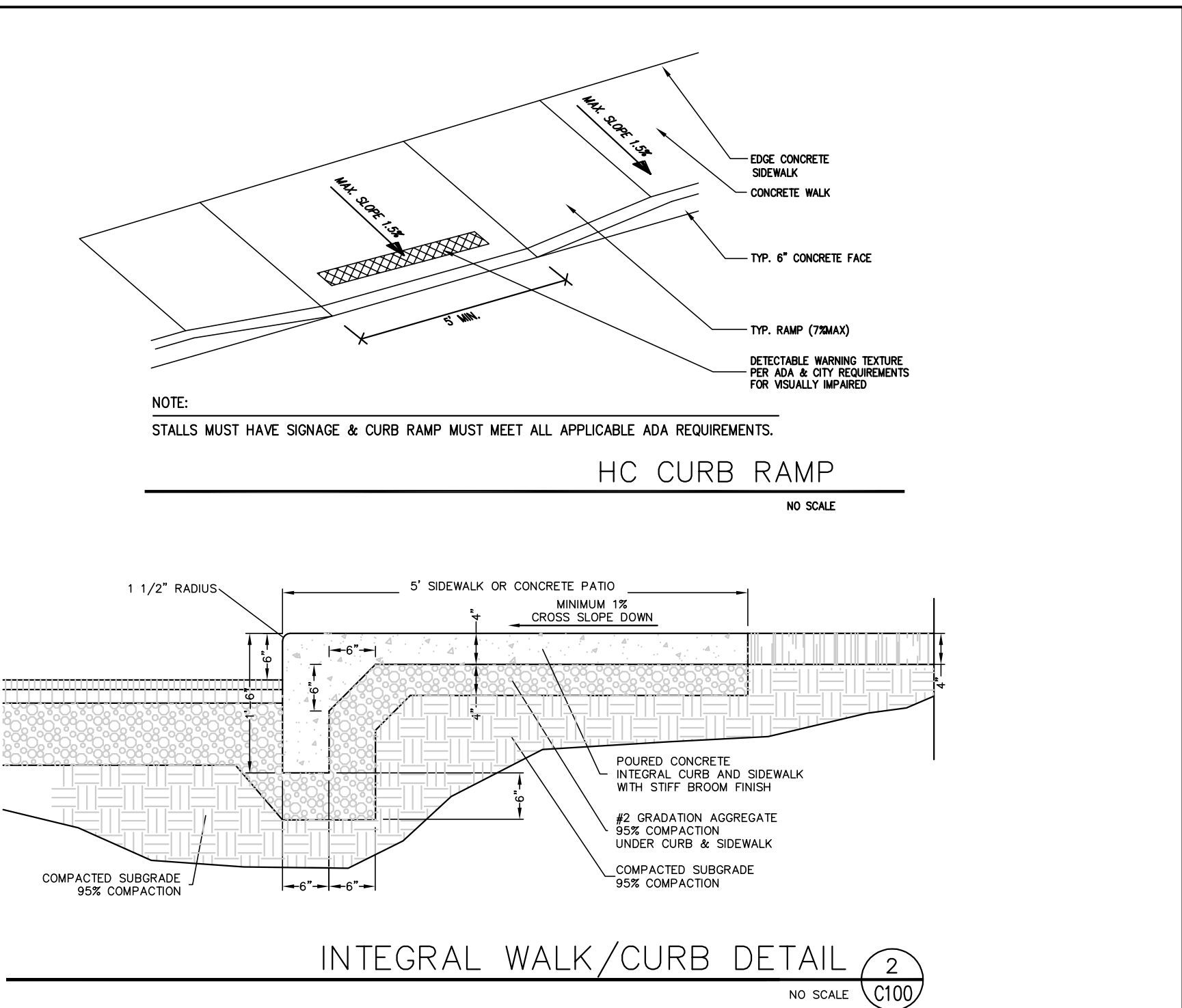
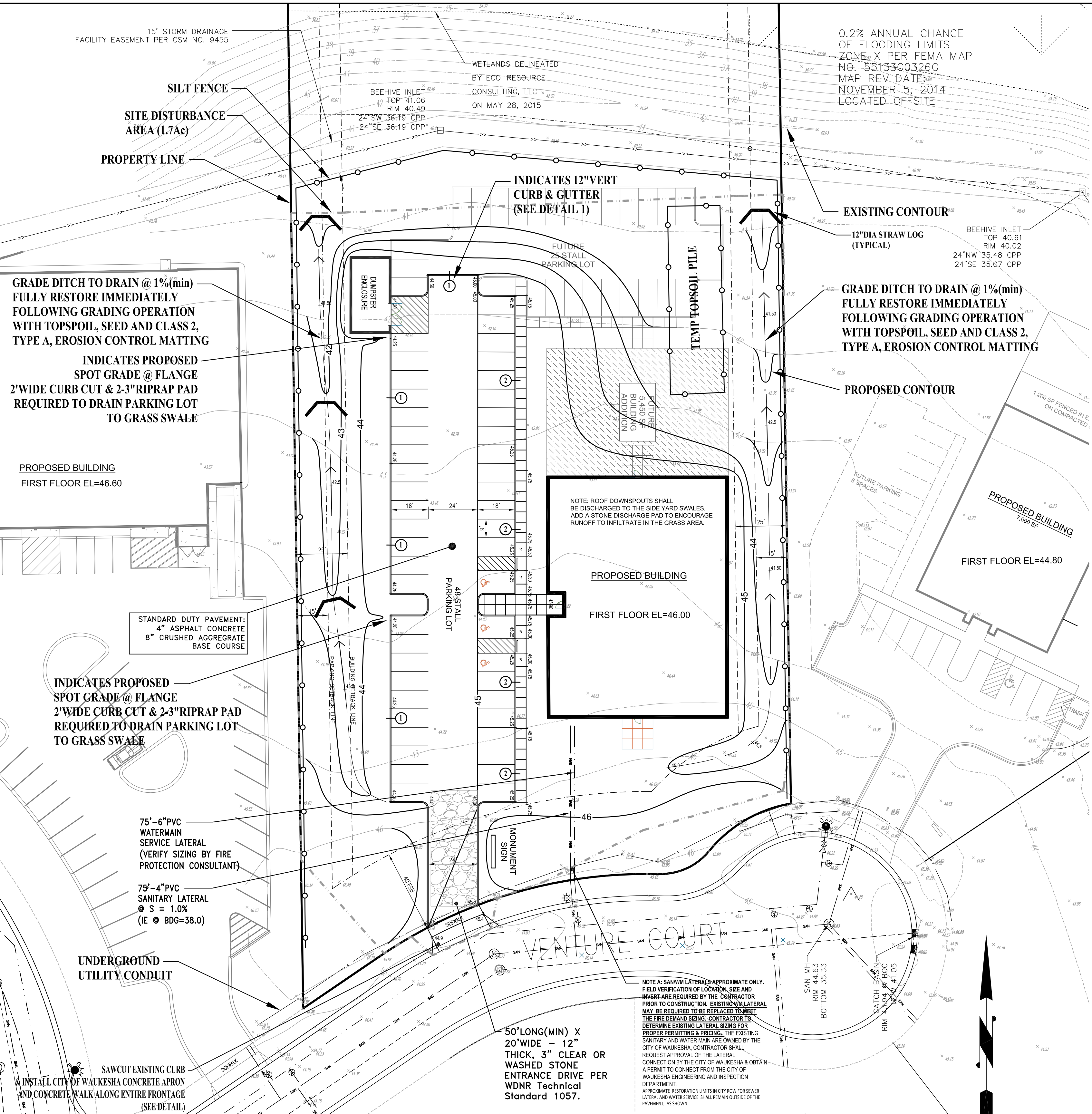
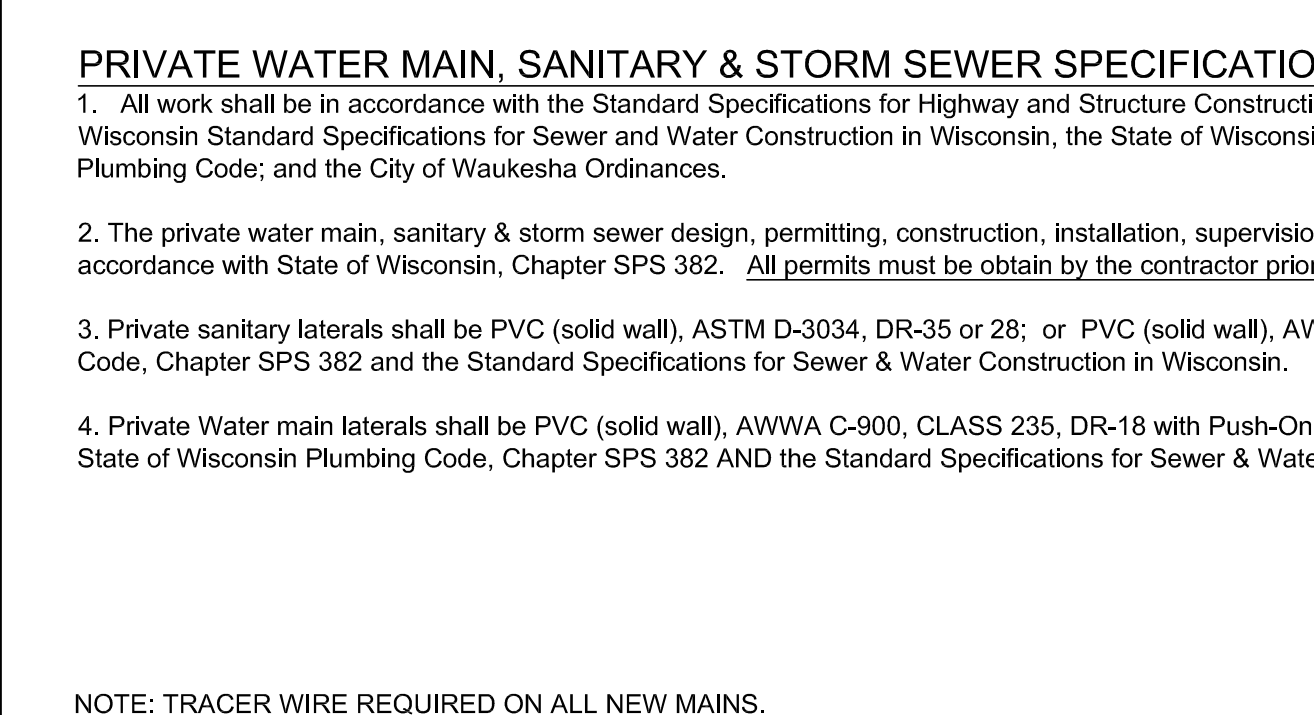


PRIVATE WATER MAIN, SANITARY & STORM SEWER SPECIFICATIONS:

- All work shall be in accordance with the Standard Specifications for Highway and Structure Construction, State of Wisconsin, Latest Edition; the State of Wisconsin Standard Specifications for Sewer and Water Construction in Wisconsin, the State of Wisconsin Department of Safety and Professional Services Plumbing Code; and the City of Waukesha Ordinances.
- The private water main, sanitary & storm sewer design, permitting, construction, installation, supervision, maintenance, inspection AND testing shall be in accordance with State of Wisconsin, Chapter SPS 382. All permits must be obtained by the contractor prior to commencing work.
- Private sanitary laterals shall be PVC (solid wall), ASTM D-3034, DR-35 or 28; or PVC (solid wall), AWWA C-900 per the State of Wisconsin Plumbing Code, Chapter SPS 382 and the Standard Specifications for Sewer & Water Construction in Wisconsin.
- Private Water main laterals shall be PVC (solid wall), AWWA C-900, CLASS 235, DR-18 with Push-On type integral elastomeric bell-spigot joints per the State of Wisconsin Plumbing Code, Chapter SPS 382 AND the Standard Specifications for Sewer & Water Construction in Wisconsin.



GENERAL CONSTRUCTION SPECIFICATIONS:

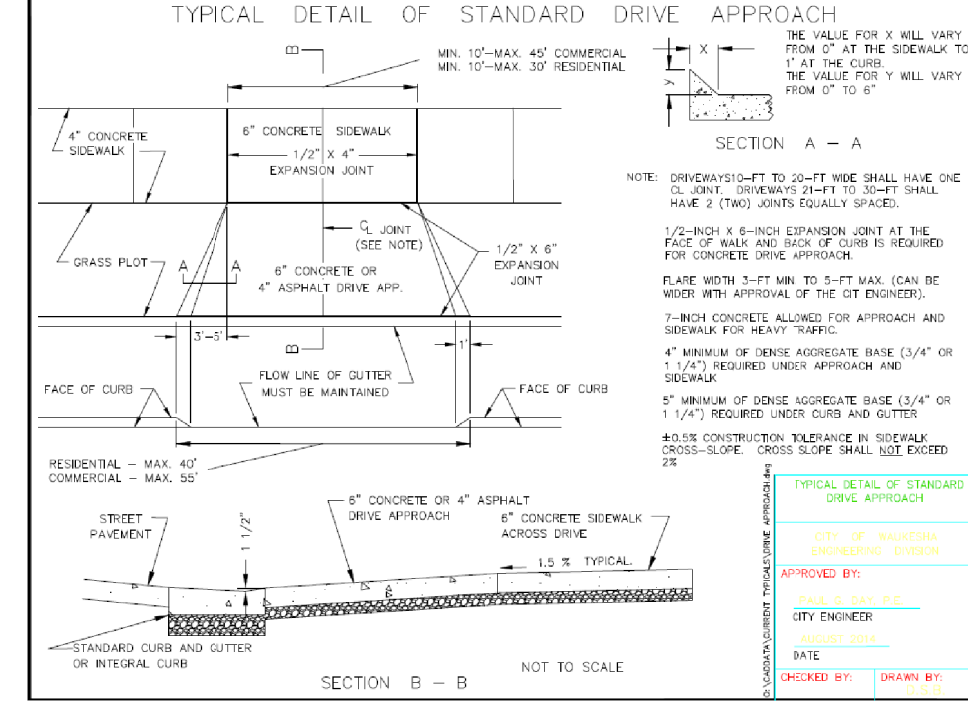
- All work shall be in accordance with the Standard Specifications for Highway and Structure Construction, State of Wisconsin, Latest Edition, and the City of Waukesha Ordinances and the State of Wisconsin Standard Specifications for Sewer and Water Construction in Wisconsin and the design, construction, installation, supervision, maintenance and inspection of plumbing in accordance with State of Wisconsin, Chapter SPS 382. All permits must be obtained by the contractor prior to commencing work.
- All erosion control measures specified on the project Erosion Control Plan shall meet the design criteria, standards and specifications as set forth in the Department of Natural Resources Wisconsin Technical Standards.
- All erosion control devices (i.e., silt fence, gravel entrance, inlet protection, etc.) shall be installed prior to commencing mass grading or utility construction.
- All activities on the site shall be conducted in a logical sequence to minimize the area of bare soil exposed at any one time.
- The general contractor shall provide all surveying and construction staking for this contract. All contractors shall exercise care and diligence in protecting the same.
- The contractor shall notify Diggers Hotline, the local municipality and all government agencies that may be affected by the contractor's operations at least three (3) days before breaking ground. Diggers Hotline number is 811.
- Public roads shall not be closed to traffic at any time. All ingress and egress traffic to the project shall be limited to the gravel entrance to the property.
- Contractor shall be responsible for maintaining the Public Roadways. The Public Roadways adjacent to this project shall be kept free of silt or dirt tracked from areas under construction by sweeping at the end of each work day or more often, as required. Dust generated by construction activities shall be minimized by use of watering, construction scheduling or other appropriate methods.
- Upon completion of the work as specified, respread four (4") inches of salvaged topsoil over all disturbed open space areas outside of the proposed roadway and provide seed, fertilizer and mulch per the Standard Specifications.
- All disturbed areas shall be revegetated within seven days of no disturbance. Highway mix #40 shall be used for seeding with an application rate of 4.0 lbs/1000 sf.
- All erosion control devices shall be routinely inspected every seven days or within 24 hours of a rainfall greater than 0.5 inches. (By GENERAL CONTRACTOR).
- If permanent seeding is not completed by September 15, apply temporary seeding. If temporary seeding is not completed by October 15, erosion control matting or other Village approved method shall be applied to inactive disturbed soils between October 15th and May 1st as a temporary soil stabilization measure during the non-growing season.

CONSTRUCTION PHASING SEQUENCING:

THE CONTRACTOR MUST FOLLOW THE FOLLOWING CONSTRUCTION SEQUENCE AS REQUIRED BY THE WDRN AND THE CITY OF WAUKESHA.

- INSTALL GRAVEL CONSTRUCTION ENTRANCE AS SHOWN ON THE PLAN (TRACKING PAD).
- INSTALL SILT FENCE AND INLET PROTECTION IN ALL EXISTING INLETS ADJACENT TO SITE AND PROPOSED INLETS ONSITE. INLET PROTECTION SHALL BE IN ACCORDANCE WITH THE WDRN TECHNICAL STANDARD 1060 (TYPE B & D).
- STRIP TOPSOIL FROM THE STRUCTURAL AREAS AND STOCKPILE AS SHOWN WITH SILT FENCE BOUNDARY. THE TOPSOIL PILE REQUIRES TEMPORARY STABILIZATION IF LEFT INACTIVE FOR MORE THAN 14 DAYS.
- CONSTRUCT STORM SEWER AND SAN/WM LATERALS.
- COMPLETE BUILDING, PARKING LOT, WALKS & LANDSCAPE AREAS.
- TOPSOIL RE-VEGETATE AND STABILIZE ALL REMAINING DISTURBED AREAS.
- AFTER ALL DISTURBED AREAS ARE WELL-ESTABLISHED AND FOLLOWING FINAL AS-BUILT ACCEPTANCE BY THE VILLAGE, REMOVE ALL SILT FENCE AND ANY OTHER TEMPORARY BMP'S.

CONSTRUCTION SCHEDULE: START DATE: OCTOBER 2017 COMPLETION DATE: OCTOBER, 2018



SCALE: 1" = 30'

SURVEY NOTE:

THE EXISTING BOUNDARY & TOPOGRAPHIC SURVEY SHOWN HEREON WAS PROVIDED BY METROPOLITAN SURVEY SERVICE, DATED JANUARY 2018.

THE UNDERGROUND UTILITY INFORMATION AS SHOWN HEREON IS BASED, IN PART, UPON INFORMATION FURNISHED BY UTILITY COMPANIES AND THE LOCAL MUNICIPALITY. WHILE THIS INFORMATION IS BELIEVED TO BE RELIABLE, ITS ACCURACY AND COMPLETENESS CANNOT BE GUARANTEED NOR CERTIFIED TO.

REVISIONS	
DATE	DESC

ELLENA ENGINEERING CONSULTANTS, LLC
SITE CIVIL, ENGINEERING & STORMWATER MANAGEMENT

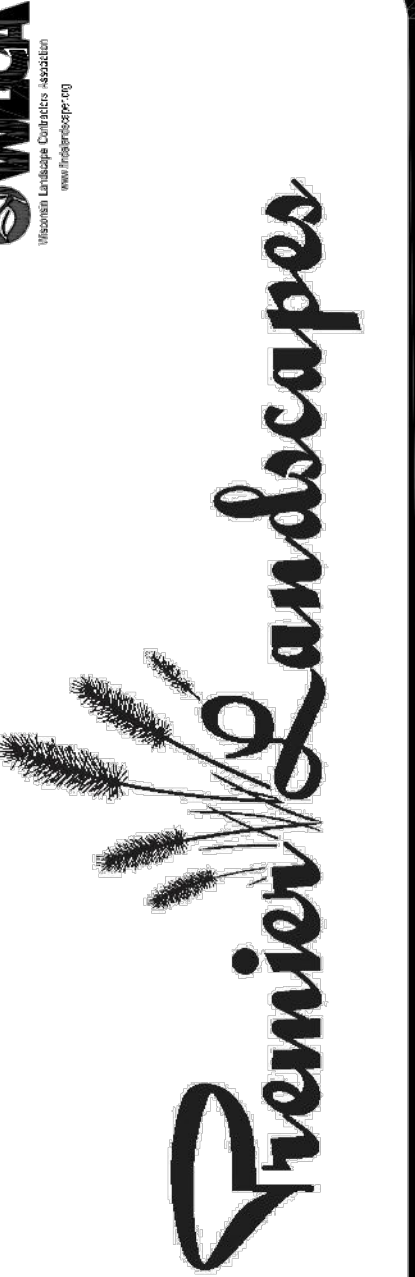
Elleena Engineering Consultants, LLC • 700 Pilgrim Parkway - Suite 100 • Elm Grove, WI 53122
Phone: 262-719-6183 • Fax: 866-457-2584 • Email: mellen@elceng.com

LIBERTY DANCE
City of Waukesha, Wisconsin

GRADING, PAVING & UTILITY PLAN

SCALE: 1"=30' JOB NO.: DATE: 07-09-18
DESIGNED BY: MRE,PE C100

MARK R. ELLENA
E-24090
WI
PROFESSIONAL ENGINEER



LANDSCAPE DEVELOPMENT FOR
LIBERTY DANCE CENTER
VENTURE COURT
WAUKESHA, WI 53189

LANDSCAPE ARCHITECTURE

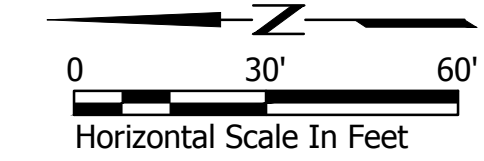
DRAWN BY: GAR

DATE: 06/11/2018

REVISED:

SCALE: 1"=30'-0"

SHEET: L100



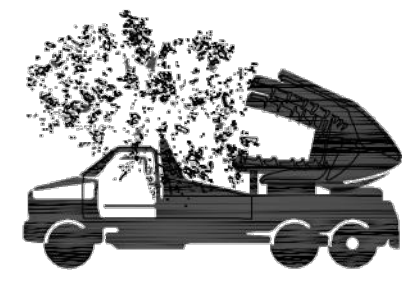
Gerard A. Rewolinski

LANDSCAPE CONCEPT PLAN

PLANTINGS, STRUCTURES AND OTHER REPRESENTATIONS SHOWN ON THIS PLAN ARE FOR THE PURPOSE OF CONVEYING LANDSCAPE DESIGN FEATURES. REFER TO PREPARED CONTRACT DOCUMENTS FOR SPECIFIC ITEMS INCLUDED IN ANY PARTICULAR PHASE OF LANDSCAPE CONSTRUCTION.

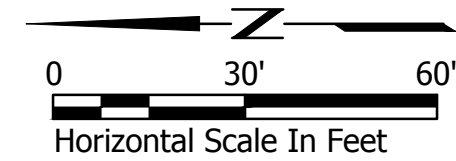
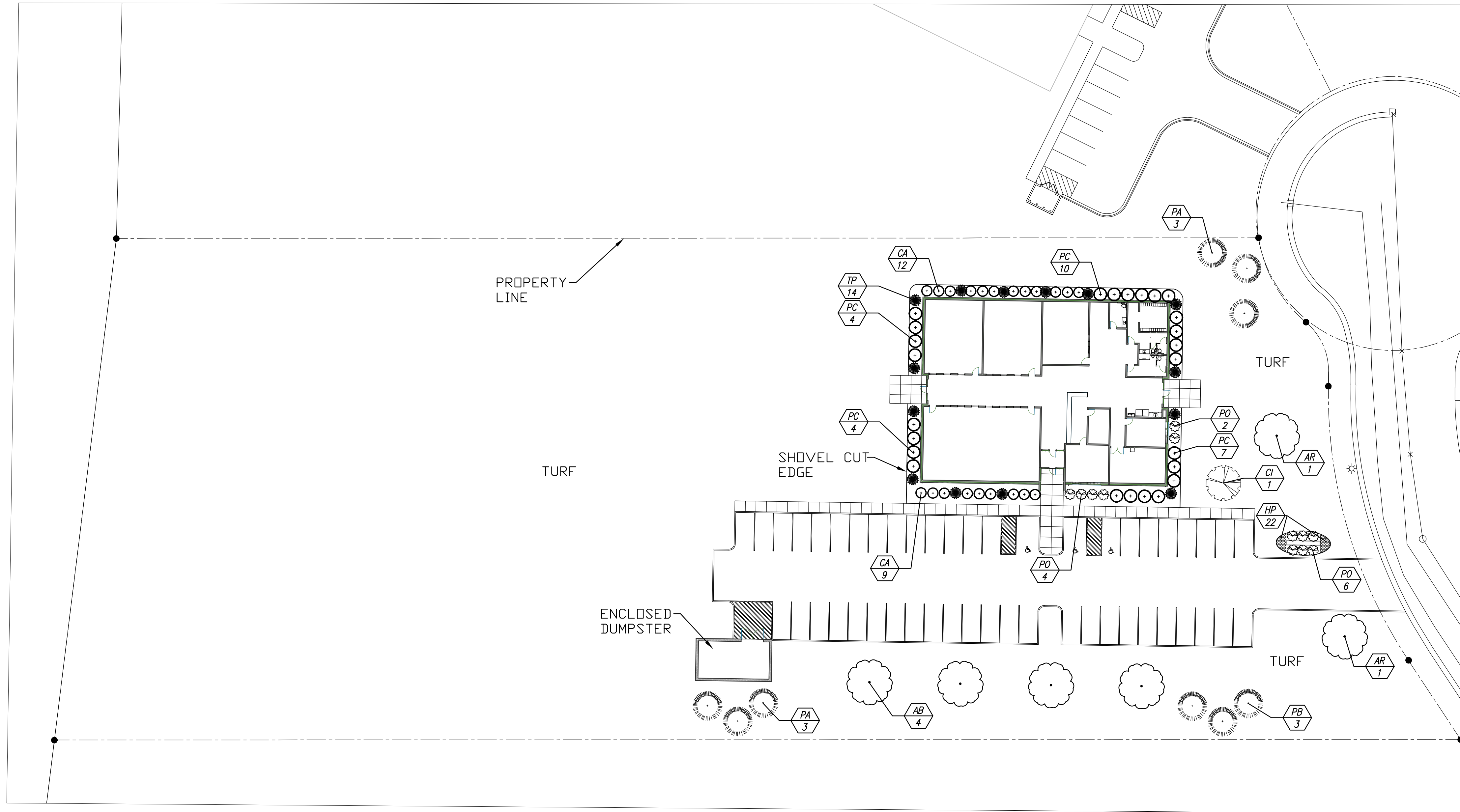


TREES ON THE MOVE
5611 S. Calhoun Road
New Berlin, WI 53151
Phone: (262) 679-5200
treesonthemove.com



WISCONSIN'S LARGEST
TREE TRANSPLANTERS

Key	Botanical Name	Common Name	Qty.	Size	Root	Spacing
DECIDUOUS TREES						
AB	Acer x freemanii 'Jeffersred'	Autumn Blaze Maple	4	2.5" Cal.	B&B	as shown
AR	Acer platanoides 'Royal Red'	Royal Red Maple	2	2.5" Cal.	B&B	as shown
CI	Crataegus crusgalli var. Inermis	Thornless Cockspur Hawthorn	1	2" Cal.	B&B	as shown
EVERGREEN TREES						
PA	Picea abies	Norway Spruce	6	6' High	B&B	as shown
PB	Pinus strobus	Eastern White Pine	3	6' High	B&B	as shown
TP	Thuja occidentalis 'Holmstrup'	Dwarf Arborvitae	14	4' High	B&B	as shown
DECIDUOUS SHRUBS						
CA	Cornus alba 'Baihalo'	Ivory Halo Dogwood	21	18" High	Container	5.5' o.c.
PC	Physocarpus opulifolius 'Coppertine'	Coppertina Ninebark	25	24" High	Container	5' o.c.
PO	Physocarpus opulifolius 'Little Devil'	Little Devil Ninebark	12	18" High	Container	5' o.c.
PERENNIALS						
HR	Hemerocallis 'Happy Returns'	Happy Returns Daylily	22	1 Gal.	Container	18" o.c.

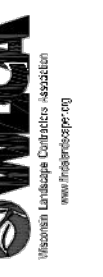


Gerard A. Rewolinski

LANDSCAPE PLAN



PLANTINGS, STRUCTURES AND OTHER REPRESENTATIONS SHOWN ON THIS PLAN ARE FOR THE PURPOSE OF CONVEYING LANDSCAPE DESIGN FEATURES. REFER TO PREPARED CONTRACT DOCUMENTS FOR SPECIFIC ITEMS INCLUDED IN ANY PARTICULAR PHASE OF LANDSCAPE CONSTRUCTION.



Premier Landscapes

LANDSCAPE DEVELOPMENT FOR

LIBERTY DANCE CENTER
VENTURE COURT
WAUKESHA, WI 53189

LANDSCAPE ARCHITECTURE

DRAWN BY: GAR

DATE: 06/11/2018

REVISED:

SCALE: 1"=30'-0"

SHEET: L101

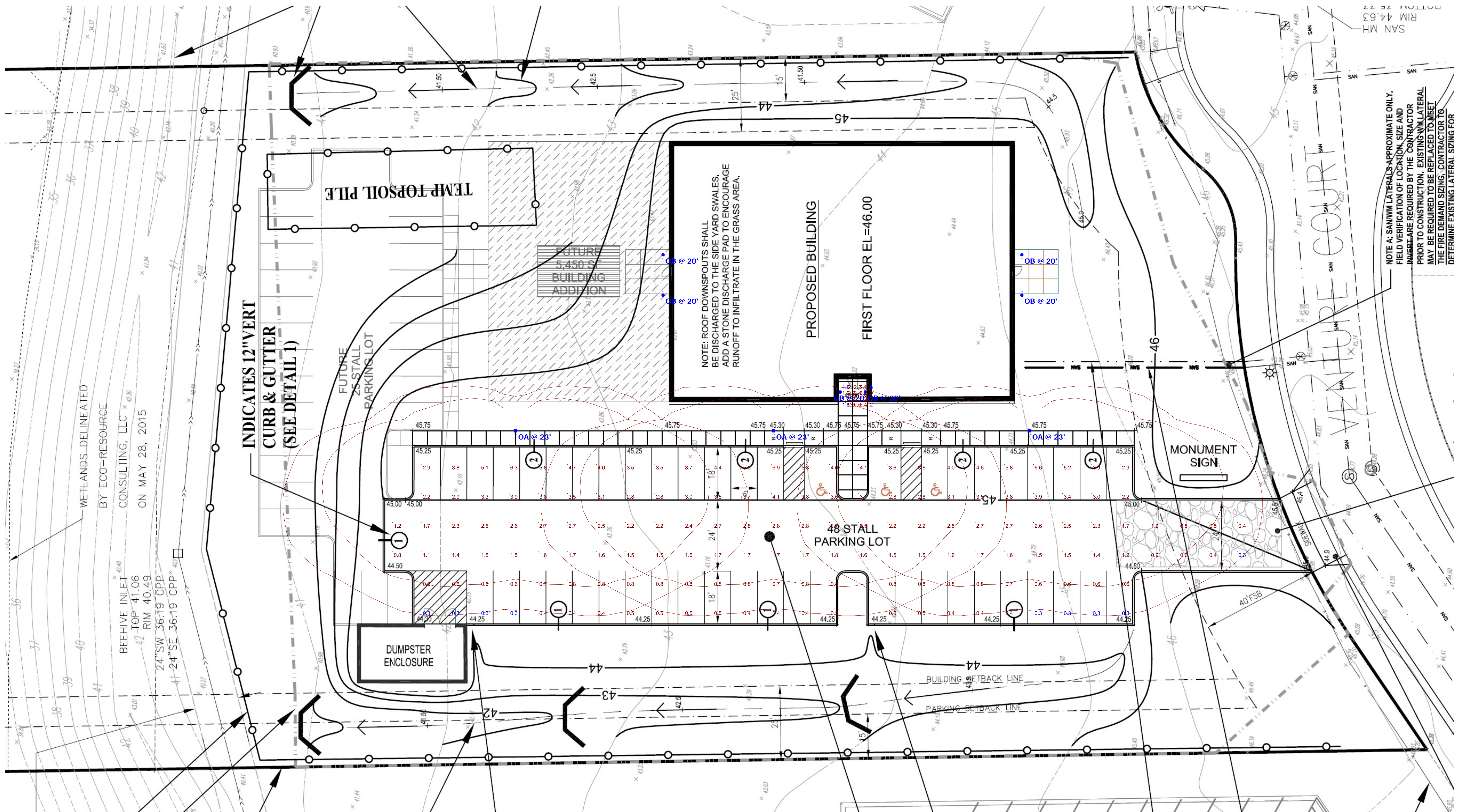
TREES ON THE MOVE

5611 S. Calhoun Road
New Berlin, WI 53151
Phone: (262) 679-5200
treesonthemove.com

Statistics						
Description	Symbol	Avg	Max	Min	Max/Min	Avg/Min
Entry	+	2.1 fc	2.6 fc	1.8 fc	1.4:1	1.2:1
Parking lot	+	2.1 fc	6.9 fc	0.3 fc	23.0:1	7.0:1

Note
 Pole Fixtures = 23' AFG
 (20' Pole + 3' Base)
 FC Measured at 0' AFG

Schedule												
Symbol	Label	Quantity	Manufacturer	Catalog Number	Description	Lamp	Number Lamps	Filename	Lumens Per Lamp	Light Loss Factor	Wattage	
⬆	OA	3	RAB LIGHTING INC.	ALED-CMB1_150W-20P	CAST FINNED METAL HOUSING, 6 CIRCUIT BOARDS EACH WITH 1 LED, MOLDED PLASTIC REFLECTOR WITH SPECULAR FINISH AND 1 APERTURE PER LED, CLEAR FLAT GLASS LENS, IN CAST WHITE PAINTED METAL LENS FRAME.	5000K LED	6	ALED-CMB1_150W-20P.lis	2805	0.95	155.2	
⬆	OB	6	WAC LIGHTING	DS-WD05-FC-CC-BZ	Tube Architectural - Color Changing LED	LED	2	DS-WD05-FC-CC-WT.lis	841	0.95	53.566	



Plan View
 Scale - 1" = 10'

ALED-CMB1/150W-20P



Project:	Type:	OA
Prepared By:	Date:	

Driver Info		LED Info	
Type:	Constant Current	Watts:	150W
120V:	1.31A	Color Temp:	5000K
208V:	0.80A	Color Accuracy:	71 CRI
240V:	0.69A	L70 lifespan:	10000
277V:	0.60A	Lumens:	16829
Input Watts:	150W	Efficacy:	108 LPW
Efficiency:	97%		

Technical Specifications

Fixture: 78W and 150W specification-grade area lights with IES Type III distribution, offered in combination with poles. For use in roadway, general parking and other area lighting applications where a larger pool of lighting is required.
Color: Bronze

Quantity: 1 qty of ALED31150D10WS2

UL Listing: Suitable for wet locations as a downlight

DLC Listed: This product is on the Design Lights Consortium (DLC) Qualified Products List and is eligible for rebates from DLC Member Utilities.
DLC Product Code: PHQ1YES

IESNA LM-79 & LM-80 Testing: RAB LED luminaires and LED components have been tested by an independent laboratory in accordance with IESNA LM-79 and LM-80.

Dark Sky Approved: The International Dark Sky Association has approved this product as a full cutoff, fully shielded luminaire

Fixture LED Characteristics

Lifespan: 100,000-hour LED lifespan based on IES LM-80 results and TM-21 calculations

LEDS: Multi-chip, high-output, long-life LEDs

Color Consistency: 7-step MacAdam Ellipse binning to achieve consistent fixture-to-fixture color

Color Stability: LED color temperature is warranted to shift no more than 200K in CCT over a 5 year period

Color Uniformity: RAB's range of CCT (Correlated Color Temperature) follows the guidelines of the American National Standard for Specifications for the Chromaticity of Solid State Lighting (SSL) Products, ANSI C78.377-2017.

Reflector: Specular vacuum-metallized polycarbonate

Gaskets: High-temperature silicone gaskets

Finish: Formulated for high-durability and long-lasting color

Weight: 32.5 lbs

Green Technology: Mercury and UV-free, RoHS compliant components. Polyester powder coat finish formulated without the use of VOCs or toxic heavy metals.

For use on LEED Buildings: DA Dark Sky Approved means that this fixture can be used to achieve LEED Credits for Light Pollution Reduction

Fixture: Electrical

Drivers: Two Drivers, Constant Current, Class 2, 2000mA, 100-277V, 50/60Hz, Power Factor 99%

THD: 6% at 120V, 11.3% at 277V

Thermal Management: Superior thermal management with external "Air-Flow" fins

Lens: Tempered glass lens

IP Rating: Ingress Protection rating of IP66 for dust and water

Mounting: Universal mounting arm compatible for hole spacing patterns from 1" to 5 1/2" center to center. Round Pole Adaptor plate included as a standard. Easy slide and lock to mount fixture with ease.

ALED-CMB1/150W-20P



Technical Specifications (continued)

Fixture: Optical

Color: Bronze powder coating

BUG Rating: B1 U0 G2

Height: 20 FT

Fixture: Other

Weight: 127 lbs

Gauge: 11

Wall Thickness: 18"

Shaft Size: 4"

Hand Hole Dimensions: 3" x 5"

Bole Circle: 8 1/2"

Base Dimension: 0"

Poles: Other

Shipping Protection: All poles are shipped in individual corrugated cartons to prevent finish damage

Terms of Sale: Pole Terms of Sale is available

Anchor Bolt: Construction

Anchor Bolt: Galvanized anchor bolts and galvanized hardware and anchor bolt template. All bolts have a 3" hook

Anchor Bolt Templates: WARNING: Template must be printed on 11" x 17" sheet for actual size. CHECK SCALE BEFORE USING. Templates shipped with anchor bolts and available

Other

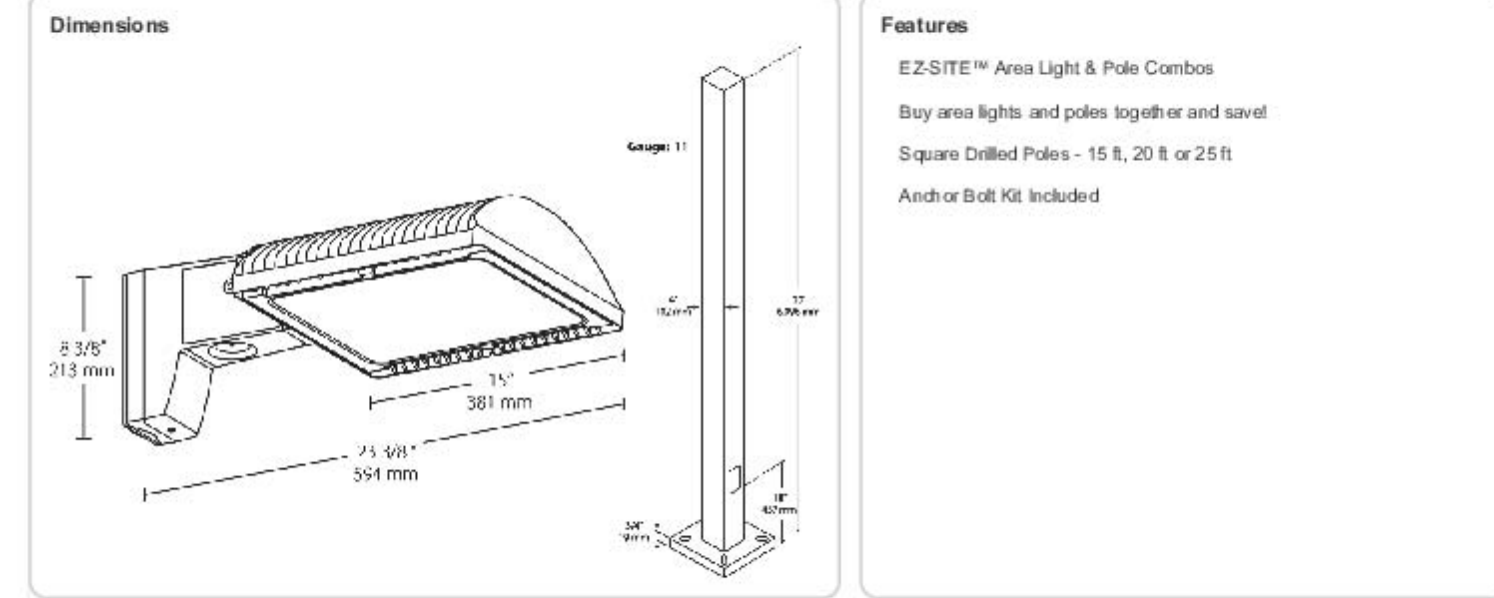
Shipping: All components ship separately

Buy American Act Compliance: RAB values USA manufacturing. Upon request, RAB may be able to manufacture this product to be compliant with the Buy American Act (BAA). Please contact customer service to request a quote for the product to be made BAA compliant.

Base Plates: Reinforced with grounding lug and removable cover

Base Plates: Slotted base plates 36,000 p.s.i.

Max Wind (MPH): 110 MPH



TUBE ARCHITECTURAL DS-WD05

Color Changing LED Wall Mounts

WAC LIGHTING

Responsible Lighting®



Fixture Type:

Catalog Number:

Project:

Location:

PRODUCT DESCRIPTION

The latest LED, Bluetooth, and DMX technology for precise color selection in an appealing cylindrical profile. Perfect for accent and wall wash lighting. Available in various light distribution and beam angle options.

FEATURES

- Full color gamut control through gradients of saturated colors from 1-100%
- Tunable White (CCT) Range: 1650-8000K
- Bluetooth control via Iumenight™ iOS App
- High performance LED wall mounted light
- Solid die cast aluminum construction
- 5 year warranty

SPECIFICATIONS

Input: Universal voltage 120V-277V, 50/60Hz

Control: DMX512-A, Bluetooth v4.0. Configured with Iumenight™ iOS App

Dimming: 100%-1% in CCT & Color via DMX or Bluetooth control

Light Source: High output 2 Step MacAdam Ellipse LEDs, 90+ CRI
Rated life of 50,000 hours at L70

Finish: Electrostatically powder coated white, black, bronze and graphite

Standards: IP65 rated, ETL & cETL wet location listed

Operating Temperature: -40°F to 104°F (-40°C to 40°C)

Diameter	Power	Beam	Delivered Lumens @ 3000K	CBPC @ 3000K	Light Direction	Color Temp	Finish
2.38" / 60 mm	15W	S 15°	735 x2	6186 x2	Straight up or down	Color Changing	BK Black WT White BZ Bronze GH Graphite
		N 25°	645 x2	1951 x2			
		F 33°	630 x2	1386 x2			
3.54" / 90 mm	27W	F 33°	840 x2		Away from the wall Towards the wall Overhead cast	Color Changing	BK Black WT White BZ Bronze GH Graphite
		A 45°					
		B 60°					

DS-WD05-__-CC-__

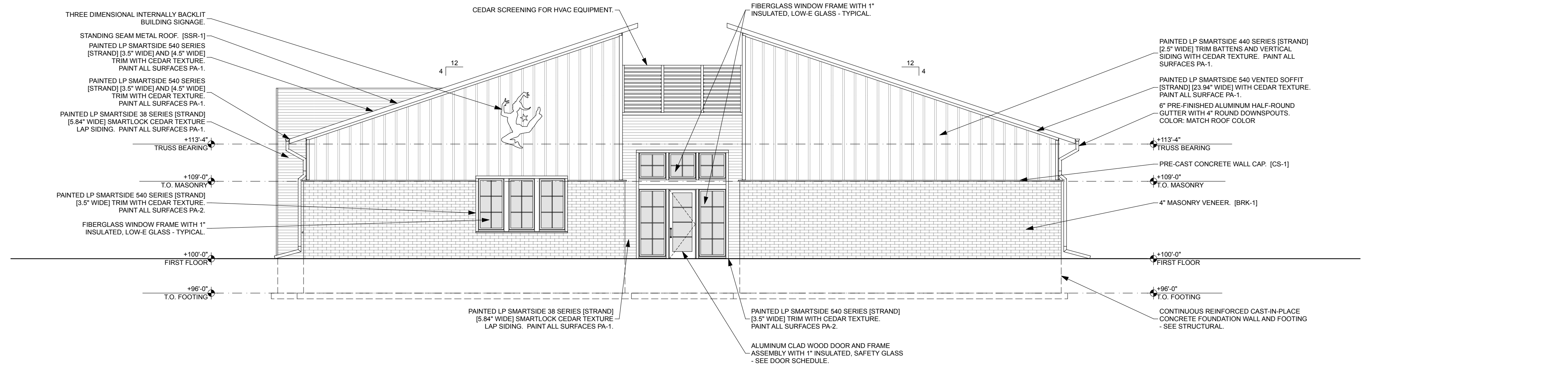
Example: DS-WD05-FA-CC-GH



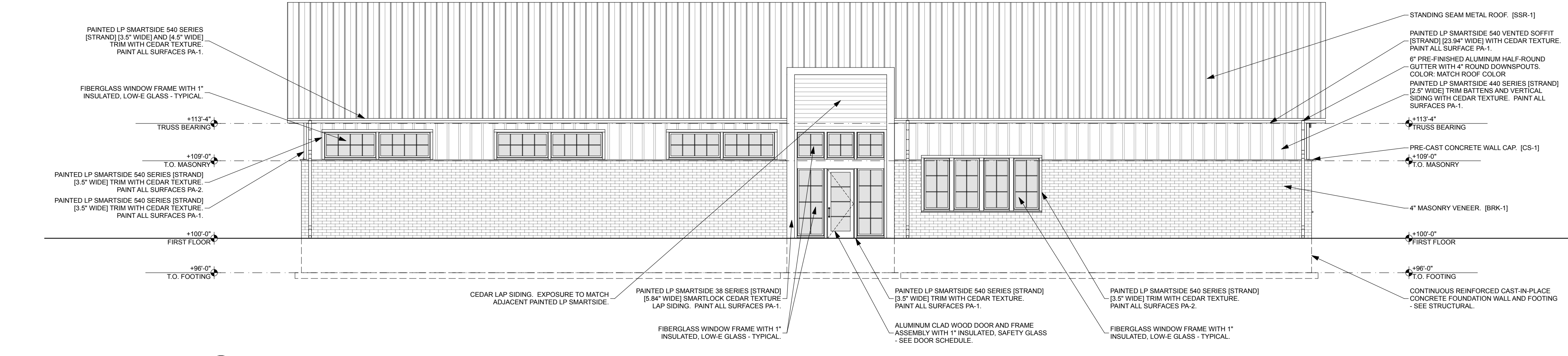
waclighting.com Phone (800) 526.2588 Fax (800) 526.2585
Headquarters/Eastern Distribution Center 44 Harbor Park Drive Port Washington, NY 11050
Central Distribution Center 1600 Distribution Ct. Lithia Springs, GA 30122
Western Distribution Center 1750 Archibald Avenue Ontario, CA 91760

WAC Lighting retains the right to modify the design of our products at any time as part of the company's continuous improvement program. NOV 2017

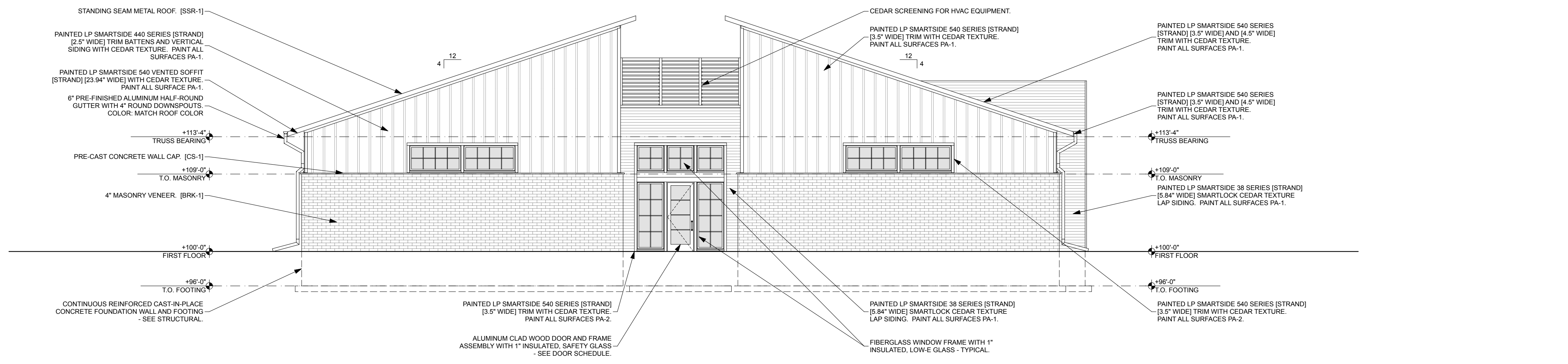




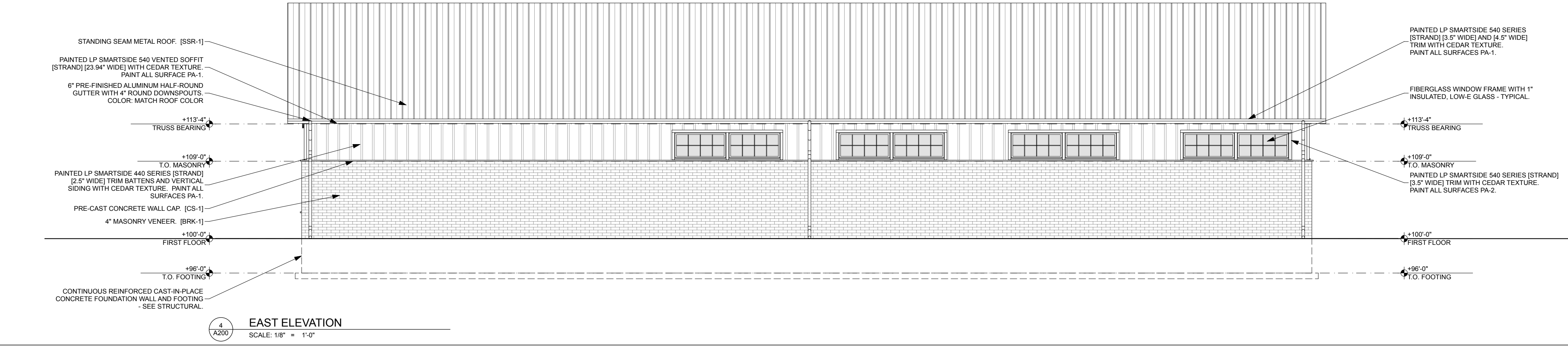
1 SOUTH ELEVATION
SCALE: 1/8" = 1'-0"



2 WEST ELEVATION
SCALE: 1/8" = 1'-0"



3 NORTH ELEVATION
SCALE: 1/8" = 1'-0"



4 EAST ELEVATION
SCALE: 1/8" = 1'-0"

DRAWING ISSUE	DATE
CITY PLAN COMMISSION - A	05.14.18
CITY PLAN COMMISSION - B	07.09.18

PROJECT # 18.07

EXTERIOR ELEVATIONS

A200

NOT FOR CONSTRUCTION