

Waukesha Residences, LLC by T. Wall Enterprises, LLC Fox Head Residences - Plan Commission Submittal

Maple Avenue, Waukesha, Wisconsin



11000 west park place milwaukee, wisconsin 53224 t 414 359 3060
2310 crossroads drive suite 2000 madison, wisconsin 53718 t 608 240 9900
1613 fruitville road suite 3 sarasota, florida 34236 t 941 348 3618
intelligent designs. inspired results. | www.prarch.com

Sheet Index

Architectural

A000 - Title Sheet
A001 - Exterior Perspective
A002 - Existing Aerial Site Plan
A003 - Proposed Aerial Site Plan
A200 - Lower Parking Plan
A201 - Site Plan / First Floor Plan
A202 - Second Floor Plans
A203 - Third Floor Plans
A204 - Fourth Floor Plan
A205 - Mezzanine Floor Plan
A232 - Unit Layouts
A233 - Unit Layouts
A400 Exterior Elevations
A401 Exterior Elevations

Landscape

L1 - Landscape Plan

Site Civil

S554 - Draft ALTA/ACSM Land Title Survey 1 of 2
S554 - Draft ALTA/ACSM Land Title Survey 2 of 2
C100 - Existing Conditions
C200 - Demolition Plan
C300 - Site Plan
C400 - Grading and Erosion Control Plan
C500 - Utility Plan
C600 - Plan and Profile - Watermain Easement
C601 - Plan and Profile - Watermain Easement

Site Lighting

E1 - Site Lighting Layout Plan

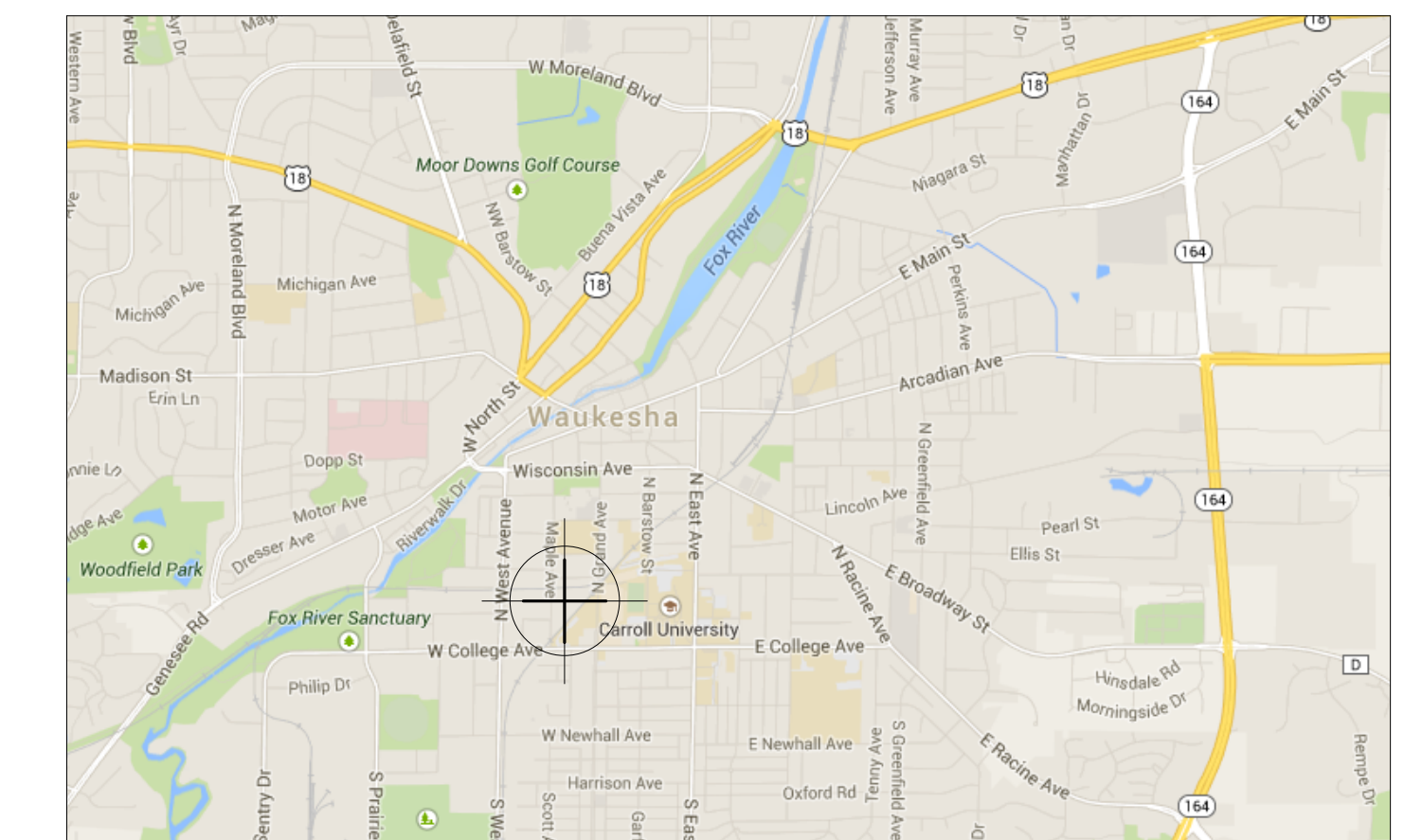
Additional Information

R.A Smith National - Memo

Project Information

Project Date: 1/13/14
PRA Project Number: 140243-03

Project Location



Project Team



Owner Waukesha Residences, LLC T Wall Enterprises, LLC	Tel 608 575-1018
Architectural Plunkett Raysich Architects, LLP	Tel 414 359-3060 Fax 414 359-3070
Landscape Bruce Company	Tel 608 826-0532 Fax 608 831-4236
Site Civil Vierbicher	Tel 414 555-1234 Fax 608 826-0532
Site Lighting Powrtek Engineering, Inc	Tel 262 827-9575 Fax 262 827-9615



NOT FOR CONSTRUCTION

© Plunkett Raysch, Architects, LLP

Drawn By:
MT,NU,MR
Date:
1/13/14
Job No.:
140243-03
Sheet No.:

A 001

Fox Head Residences - Plan Commission Submittal
Maple Avenue, Waukesha, Wisconsin

Revisions

pr
PLUNKETT RAYSCH
ARCHITECTS, LLP

11000 West Park Place Milwaukee, Wisconsin 53224 1 414 359 2646
2310 Crossroads Drive 2000 Madison, Wisconsin 53718 1 608 248 9900
1613 Frutkin Road Suite 3 Sarasota, Florida 34236 1 941 348 3618
intelligent designs. inspired results. | www.praarch.com



1 EXISTING SITE PLAN
A.002 1" = 20'-0"

NOT FOR CONSTRUCTION
© Plunkett RAYSCH Architects, LLP

Revisions
Drawn By:
CB,MT
Date:
1/13/14
Job No.:
140243-03
Sheet No.:

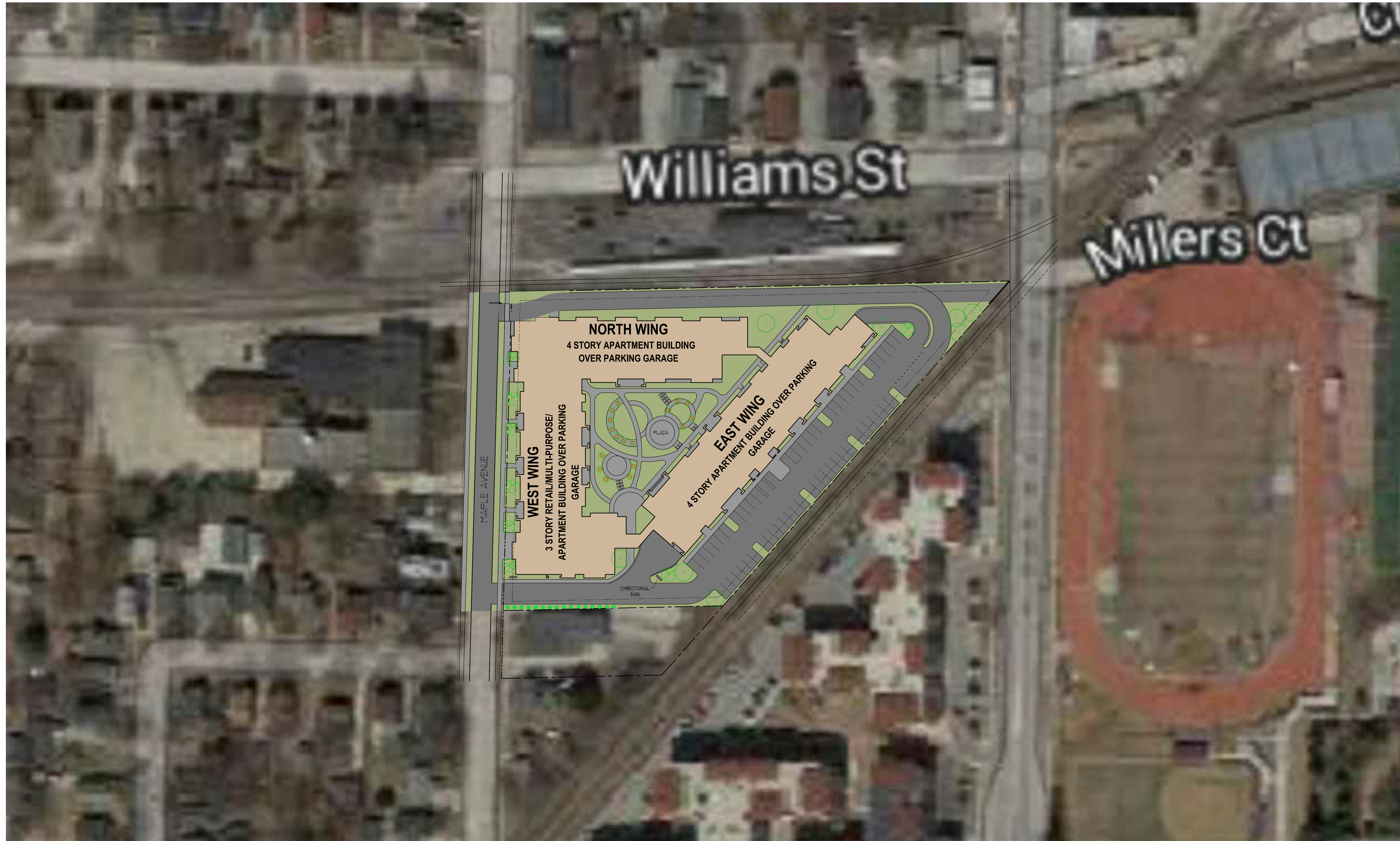
Fox Head Residences - Plan Commission Submittal
Maple Avenue, Waukesha, Wisconsin

pra

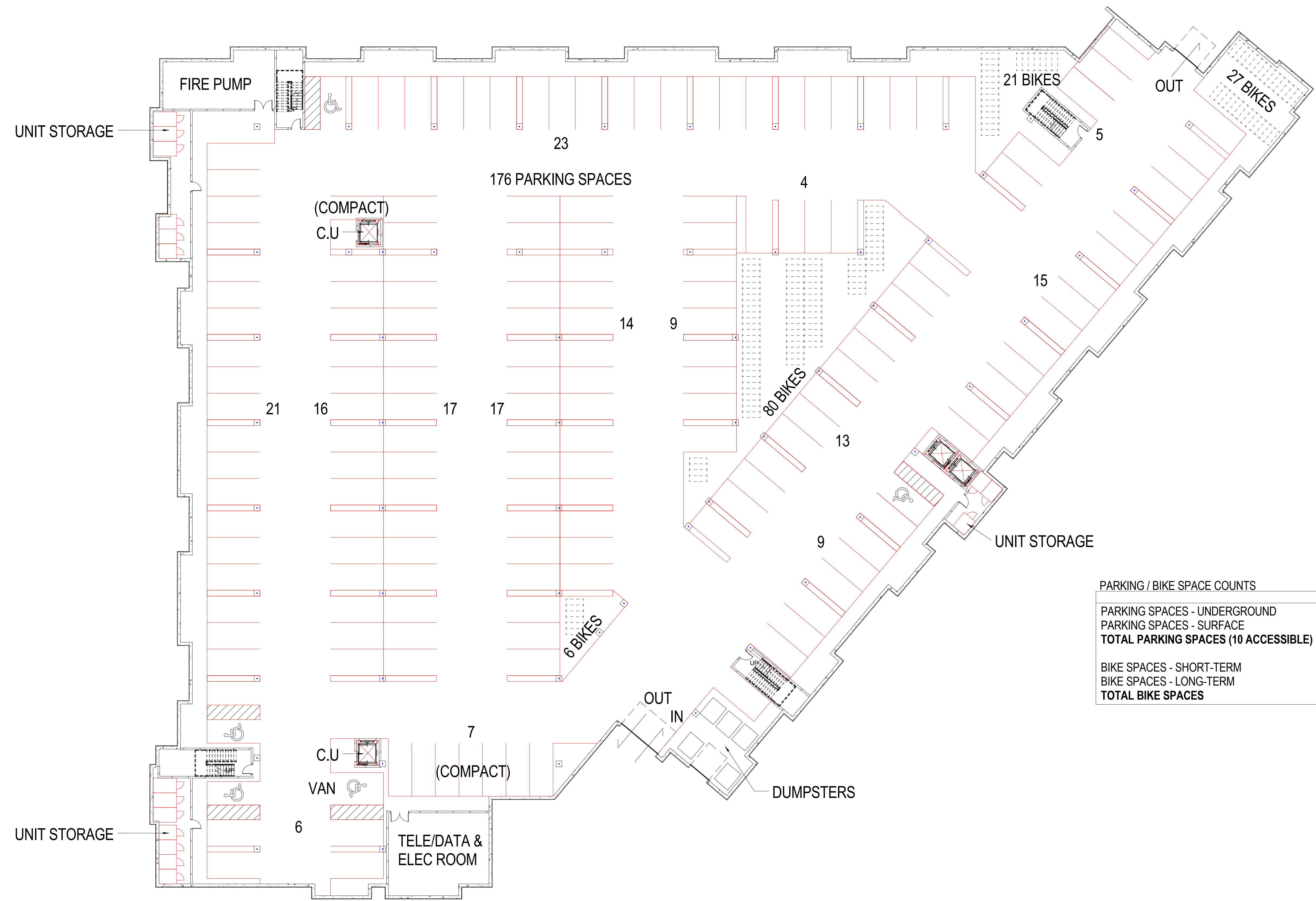
PLUNKETT RAYSCH
ARCHITECTS, LLP

11000 West Park Place Milwaukee, Wisconsin 53224 1 414 359 2046
2310 Crossroads Drive 2000 Madison, Wisconsin 53718 1 608 248 9900
1613 Frutville Road Suite 3 Sarasota, Florida 34236 1 941 348 3618
intelligent designs. inspired results. | www.prch.com

A 002



1/22/2015 4:51:13 PM C:\pra\local\Project Files\140243-03-A-central\1/4_rml\bln1.rvt



PARKING / BIKE SPACE COUNTS	
	TOTALS
PARKING SPACES - UNDERGROUND	176
PARKING SPACES - SURFACE	62
TOTAL PARKING SPACES (10 ACCESSIBLE)	238
BIKE SPACES - SHORT-TERM	13
BIKE SPACES - LONG-TERM	121
TOTAL BIKE SPACES	134

1 LOWER LEVEL PLAN - 1/16
A200 1/16" = 1'-0"

NOT FOR CONSTRUCTION
© Plunkett Raysch, Architects, LLP

Revisions
Drawn By: AD
Date: 1/13/14
Job No.: 140243-03
Sheet No.: A200

Fox Head Residences - Plan Commission Submittal
Maple Avenue, Waukesha, Wisconsin

pra
PLUNKETT RAYSCH
ARCHITECTS, LLP

11000 West Park Place Milwaukee, Wisconsin 53224 1 414 359 2646
2310 Crossroads Drive 2000 Madison, Wisconsin 53718 1 608 248 9900
1613 Frohille Road Suite 3 Sarasota, Florida 34236 1 941 348 3618
intelligent designs. inspired results. | www.praarch.com