

LANDSCAPING NOTES				
SYMBOL	COMMON NAME	BOTANICAL NAME	PLANTED SIZE	QUANTITY
DECIDUOUS SHRUBS				
	Purple Pavement Rose	Rosa rugosa 'Purple Pavement'	18"-Cont	18
	Flower Carpet Appleblossom Rose	Rosa x 'Naamel'	18"-Cont	6
EVERGREEN SHRUBS				
	Sea of Gold Juniper	Juniperus x Pfitzeriana 'MonSan'	18"-24"-B&B	13
PERENNIALS				
	Shenandoah Switch Grass	Panicum virgatum 'Shenandoah'	1 gal pot	23
	Palace Purple Coral Bells	Heuchera micrantha 'Palace Purple'	1 gal pot	17
	Cranberry Baby Daylily	Hemerocallis x 'Cranberry Baby'	1 gal pot	14

NOTE: PLACE MULCH IN ALL PLANTING BEDS

EXISTING SITE DATA			
	AREA (AC)	AREA (SF)	RATIO
PROJECT SITE	0.93	40,501	
BUILDING FLOOR AREA	0.37	15,918	39.3%
PAVEMENT (GRAVEL, ASP. & CONC.)	0.43	18,672	46.1%
TOTAL IMPERVIOUS	0.79	34,590	85.4%
LANDSCAPE/ OPEN SPACE	0.14	5,911	14.6%

PROPOSED SITE DATA			
	AREA (AC)	AREA (SF)	RATIO
PROJECT SITE	0.93	40,501	
BUILDING FLOOR AREA	0.34	14,828	36.6%
PAVEMENT (GRAVEL, ASP. & CONC.)	0.45	19,747	48.8%
TOTAL IMPERVIOUS	0.79	34,575	85.4%
LANDSCAPE/ OPEN SPACE	0.14	5,926	14.6%

**SITE INFORMATION:**

PROPERTY AREA: AREA = 40,501 S.F. (0.93 ACRES).

EXISTING ZONING: COMMUNITY BUSINESS (B-3)

PROPOSED ZONING: COMMUNITY BUSINESS (B-3)

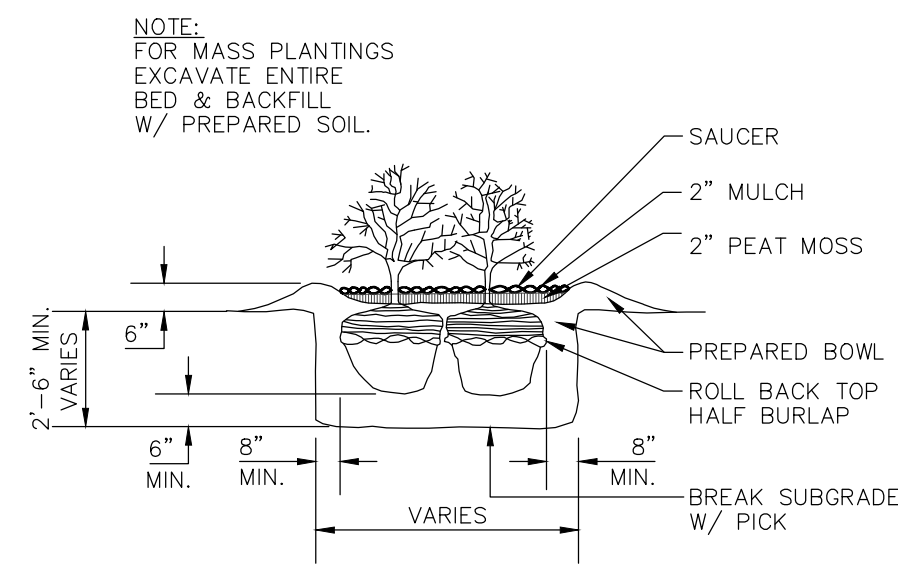
PROPOSED USE: RETAIL/ OFFICE

AREA OF SITE DISTURBANCE: 18,140 SF (0.42 AC)

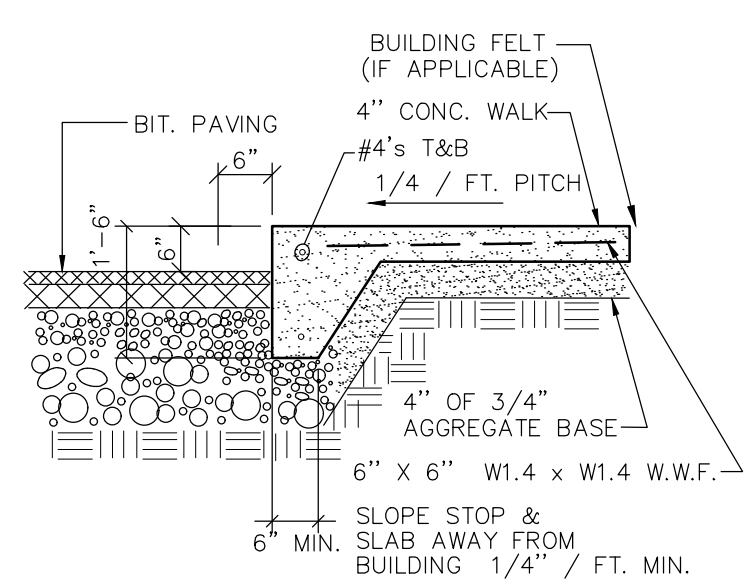
SETBACKS: BUILDING: STREET = 25'  
SIDE = 10'

PAVEMENT: STREET = 15'  
SIDE = 5'

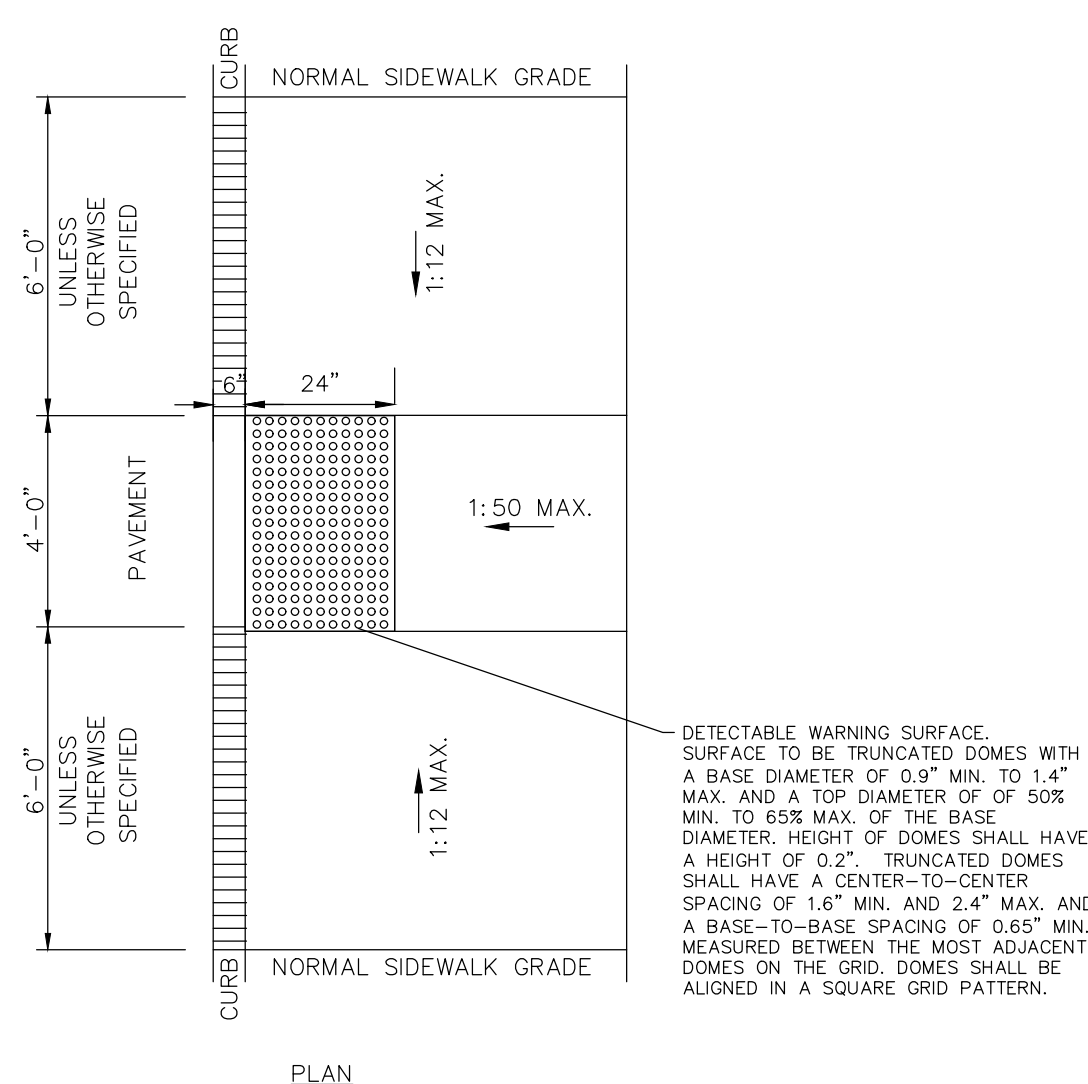
PROPOSED BUILDING HEIGHT: 22' (MAX. HEIGHT ALLOWED: 40')



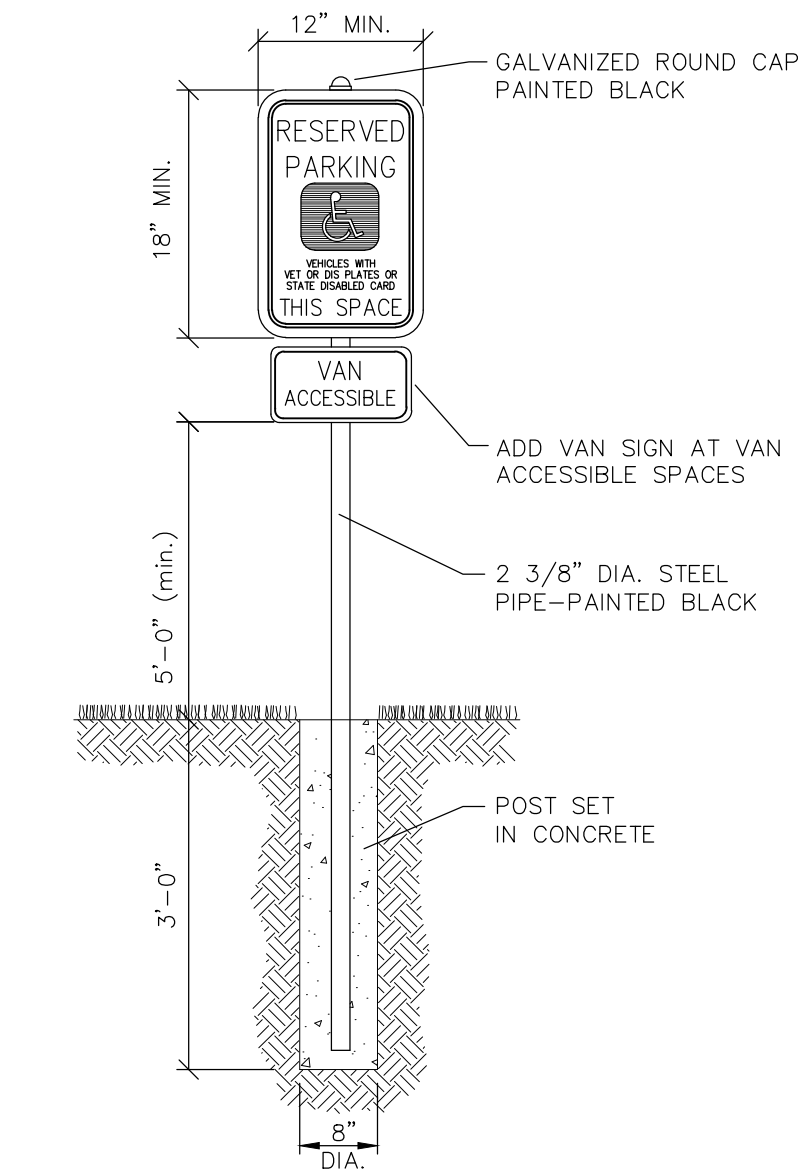
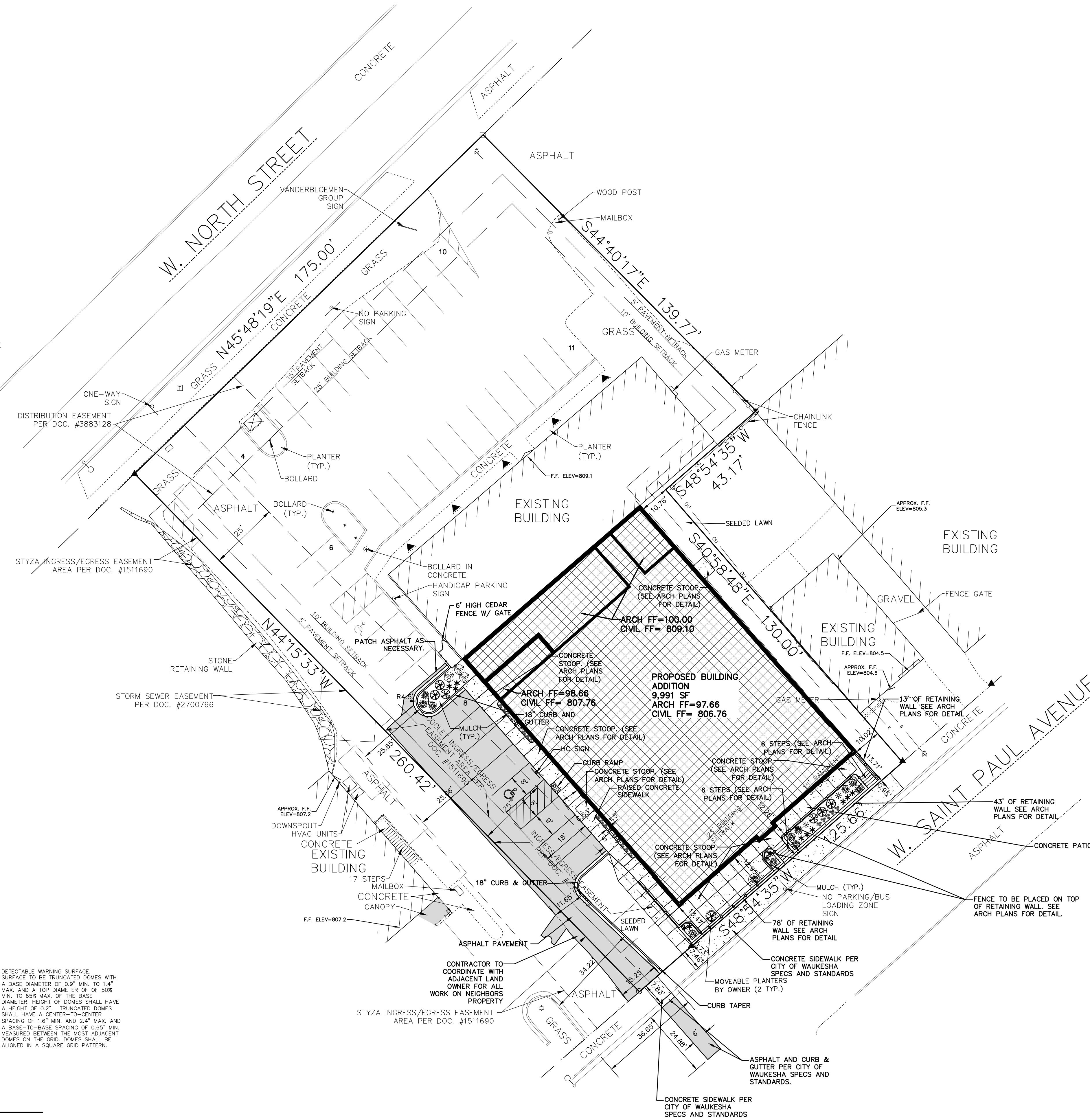
**SHRUB PLANTING DETAIL**  
NO SCALE



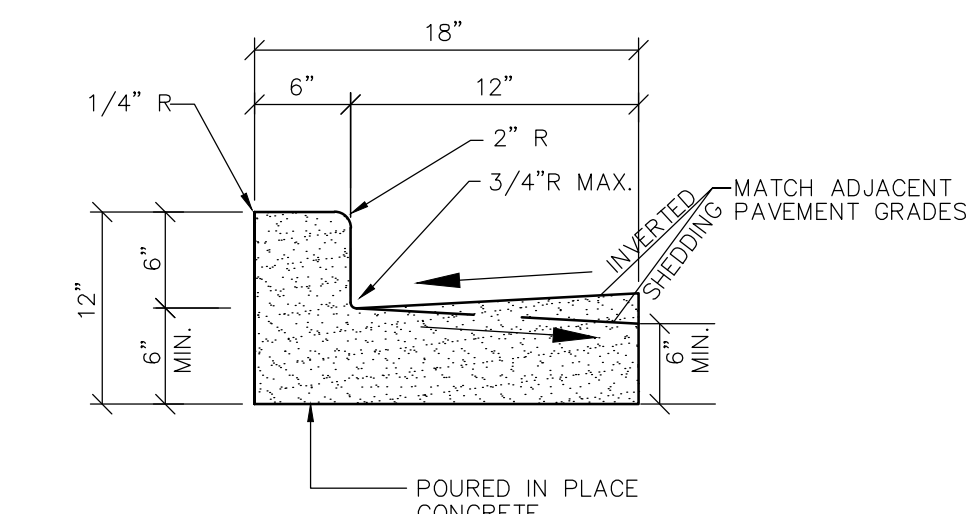
**RAISED WALK DETAIL**  
NO SCALE



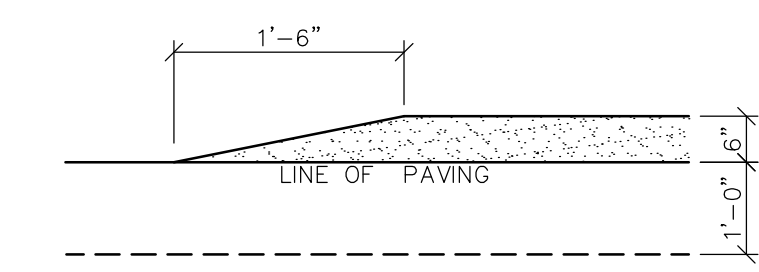
**CURB RAMP DETAIL**  
NO SCALE



**HANDICAP SIGNAGE DETAIL**  
NO SCALE



**18" CONCRETE CURB & GUTTER DETAIL**  
NO SCALE



**TAPERED CURB DETAIL**  
NO SCALE

