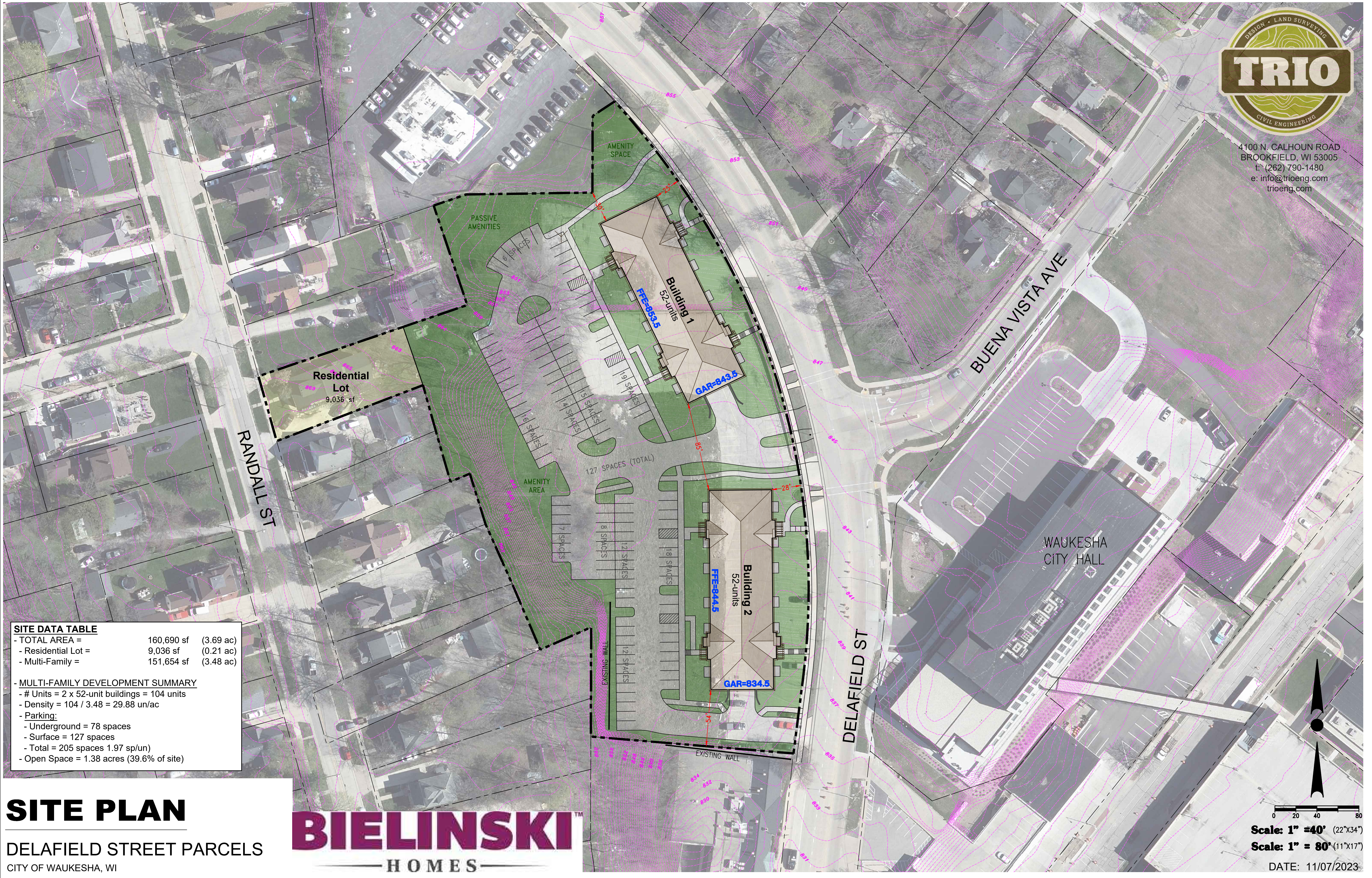




4100 N. CALHOUN ROAD
 BROOKFIELD, WI 53005
 t: (262) 790-1480
 e: info@trioeng.com
 trioeng.com



SITE DATA TABLE

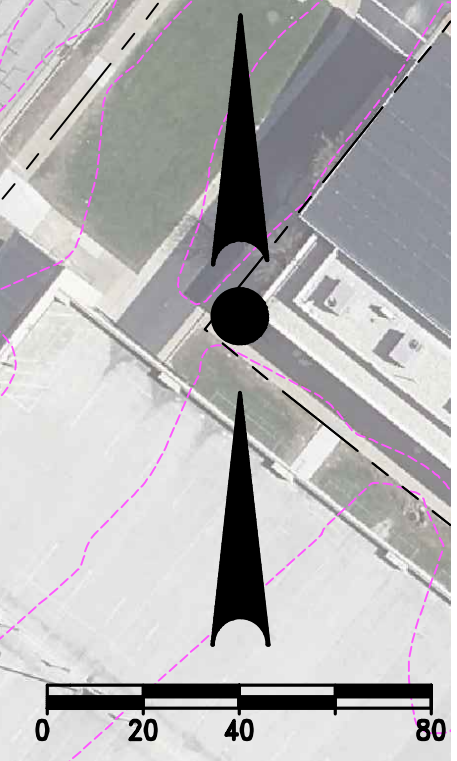
- TOTAL AREA =	160,690 sf	(3.69 ac)
- Residential Lot =	9,036 sf	(0.21 ac)
- Multi-Family =	151,654 sf	(3.48 ac)

- MULTI-FAMILY DEVELOPMENT SUMMARY

- # Units = 2 x 52-unit buildings = 104 units
- Density = 104 / 3.48 = 29.88 un/ac
- Parking:
 - Underground = 78 spaces
 - Surface = 127 spaces
 - Total = 205 spaces 1.97 sp/un)
 - Open Space = 1.38 acres (39.6% of site)

SITE PLAN

DELAFIELD STREET PARCELS
 CITY OF WAUKESHA, WI



Scale: 1" = 40' (22"x34")
 Scale: 1" = 80' (11"x17")
 DATE: 11/07/2023

h:\proj\waukesha county\waukesha 6-19\section 3-6-19_bielinski_concept_plan.dwg