

ISSUED FOR BIDDING

SITE IMPROVEMENTS

TRINITY LUTHERAN CHURCH
1052 WHITE ROCK AVENUE
WAUKESHA, WI 53186

CALL OR CLICK 3 WORKING DAYS BEFORE YOU DIG

Help Us...
Help You...
Protect
Your Facilities!



CONTACTS

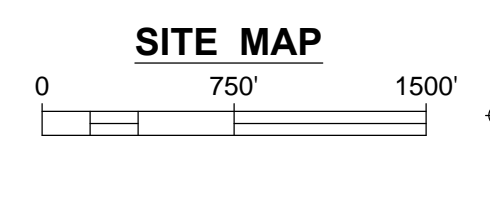
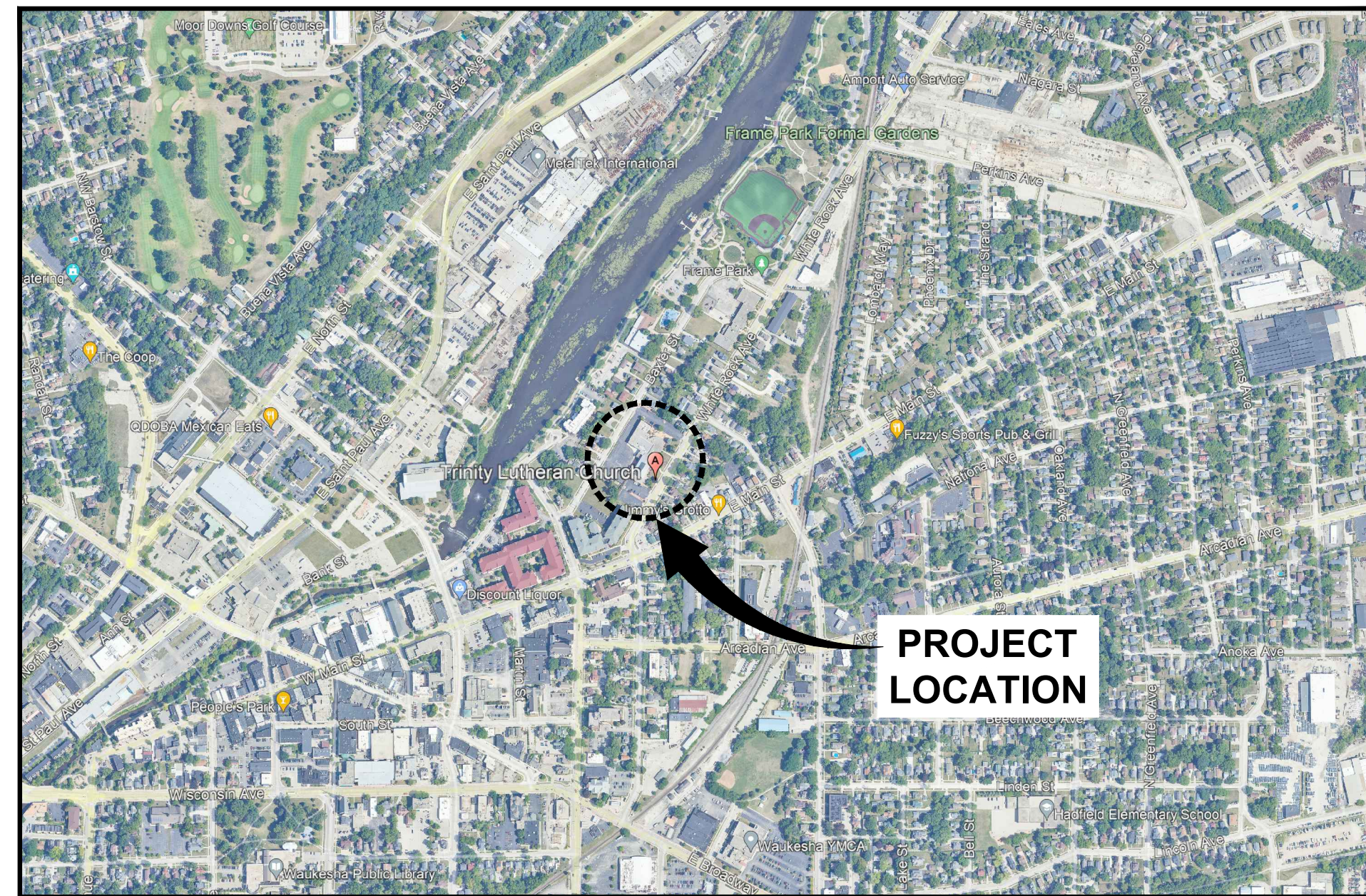
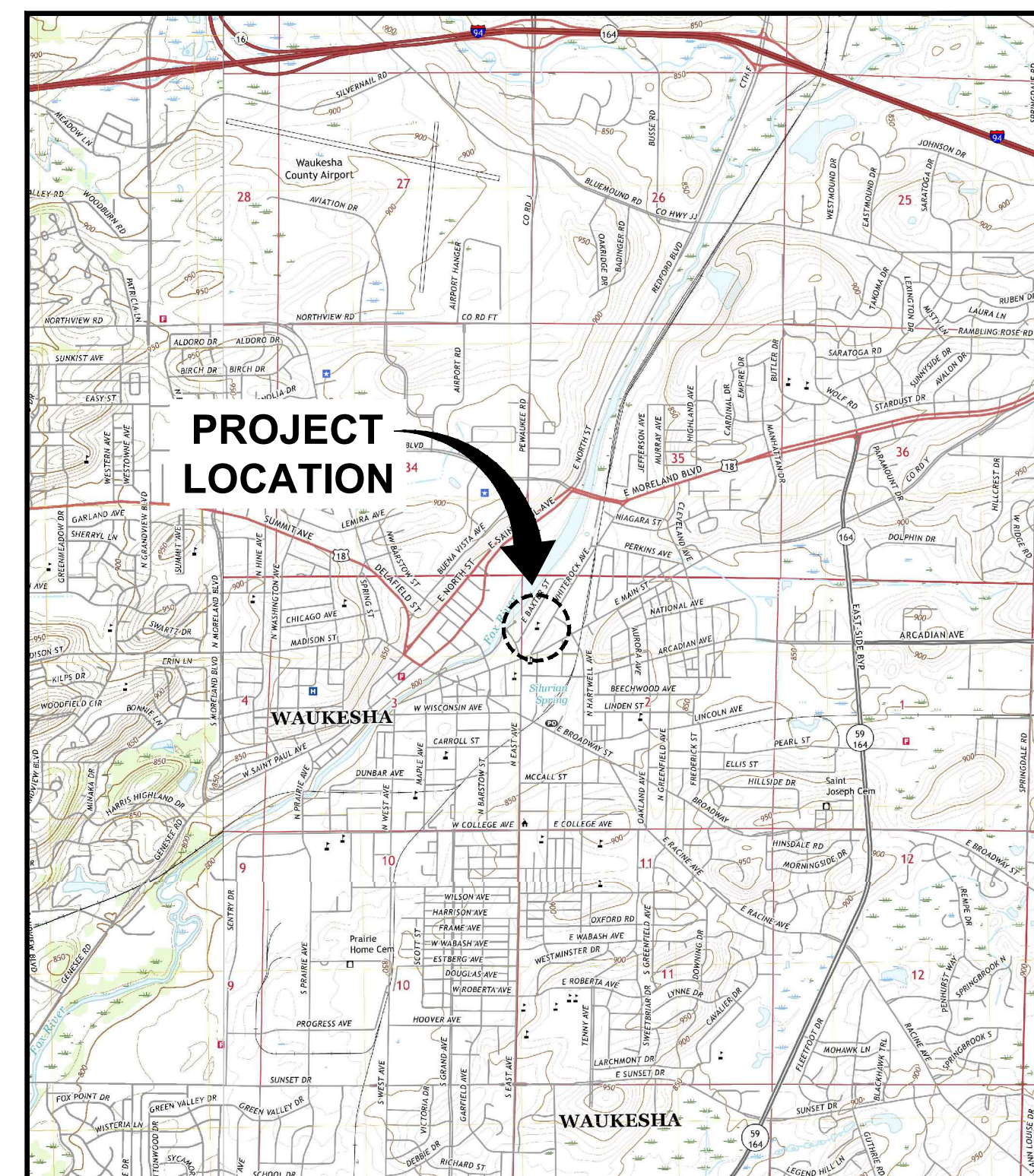
OWNER:
TRINITY LUTHERAN CHURCH
1052 WHITE ROCK AVENUE
WAUKESHA, WI 53186
CONTACT:
PHONE:
EMAIL:

SITE CONTACT:
VJS CONSTRUCTION SERVICES
W233N2847 ROUNDY CIRCLE WEST
PEWAUKEE, WISCONSIN
CONTACT: KEVIN KING
PHONE: 414-430-0604
EMAIL: K KING@VJSCS.COM

ENGINEER:
ENDPOINT SOLUTIONS CORP.
6871 S. LOVERS LANE
FRANKLIN, WI 53132
CONTACT: JASON HEINONEN, P.E.
PHONE: 414-858-1920
EMAIL: JASON@ENDPOINTCORPORATION.COM

DRAWING SHEET INDEX

- CS COVER SHEET
- C1 PRE-CONSTRUCTION CONDITIONS
- C2 DEMOLITION PLAN
- C3 PROPOSED SITE PLAN
- C3.1 PROPOSED NORTHWEST PARKING LOT MILL & OVERLAY
- C4 PROPOSED GRADING AND EROSION CONTROL PLAN
- C5 PROPOSED UTILITY PLAN
- C6 EROSION CONTROL DETAILS
- C7 GENERAL CONSTRUCTION NOTES
- C8 CONSTRUCTION DETAILS



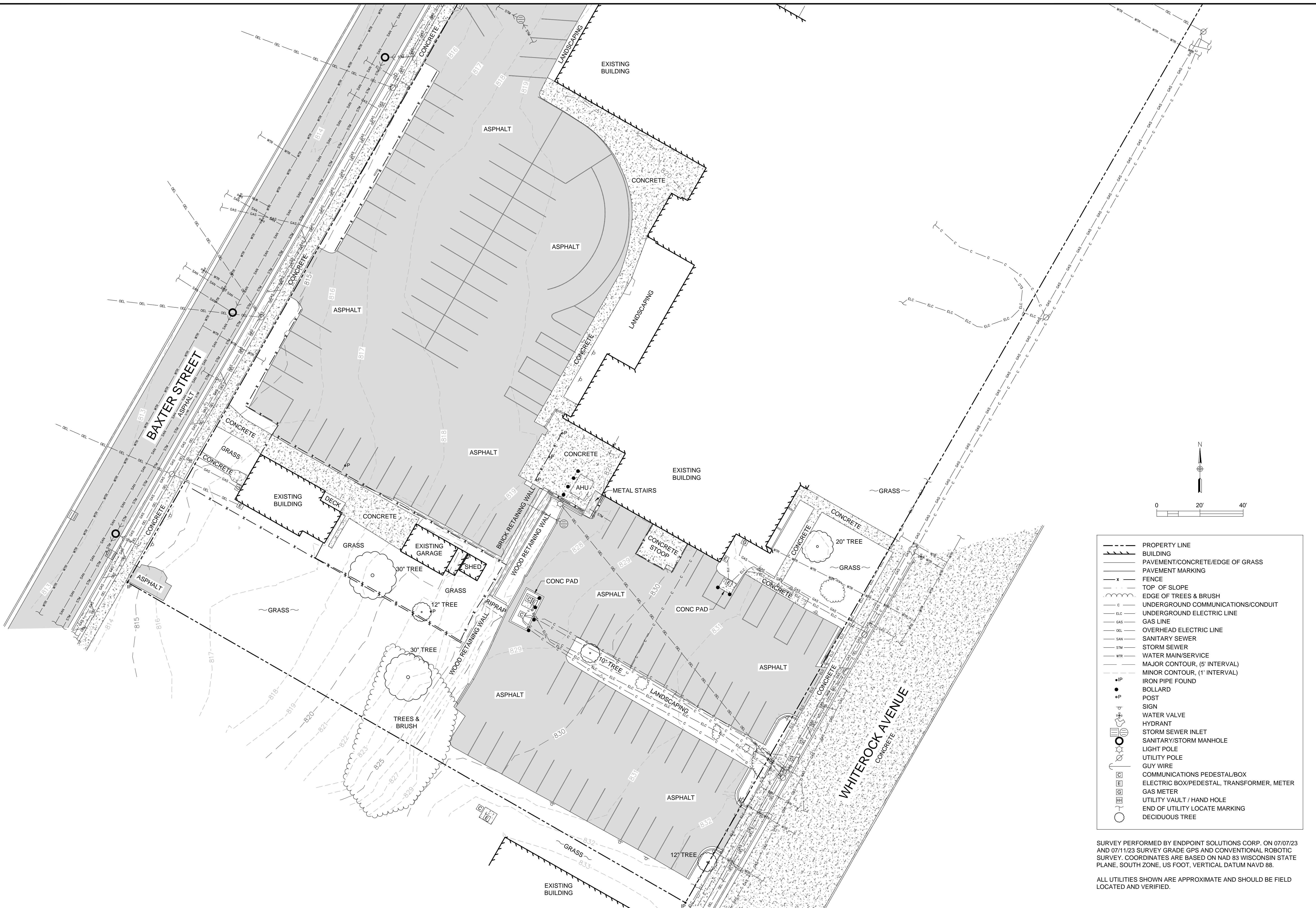
DATE ISSUED
FEBRUARY 23, 2024

Endpoint Solutions

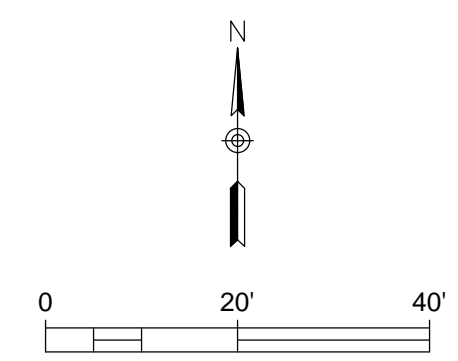
REVISION LOG

REVISION	ISSUE DATE	REVISED SHEETS	ISSUED FOR
0.0	02/23/24	ALL	ISSUED FOR BIDDING
1.0	.	.	.
2.0	.	.	.
3.0	.	.	.
4.0	.	.	.

Feb. 23, 2024 8:27am PLOTTED BY: ndraskovich SAVED BY: ndraskovich
 P:\VIS - 525\025 - Trinity Lutheran Church - Waukesha (2022)\CAD\C1_525-025-001 Pre-Construction Conditions.dwg Layout1
 IMAGES: T:\Template Forms\CADD\Logos\Endpoint Solutions HI-Res.jpg; T:\Template Forms\CADD\Logos\Endpoint Solutions HI-Res.jpg;
 XREFS: ... \Survey BaseMap.dwg; ... \Endpoint_22x34_Border-VIS Trinity.dwg



- | | |
|--|---|
| | PROPERTY LINE |
| | BUILDING |
| | PAVEMENT/CONCRETE/EDGE OF GRASS |
| | PAVEMENT MARKING |
| | FENCE |
| | TOP OF SLOPE |
| | EDGE OF TREES & BRUSH |
| | UNDERGROUND COMMUNICATIONS/CONDUIT |
| | UNDERGROUND ELECTRIC LINE |
| | GAS LINE |
| | OVERHEAD ELECTRIC LINE |
| | SANITARY SEWER |
| | STORM SEWER |
| | WATER MAIN/SERVICE |
| | MAJOR CONTOUR, (5' INTERVAL) |
| | MINOR CONTOUR, (1' INTERVAL) |
| | IRON PIPE FOUND |
| | BOLLARD |
| | POST |
| | SIGN |
| | WATER VALVE |
| | HYDRANT |
| | STORM SEWER INLET |
| | SANITARY/STORM MANHOLE |
| | LIGHT POLE |
| | UTILITY POLE |
| | GUY WIRE |
| | COMMUNICATIONS PEDESTAL/BOX |
| | ELECTRIC BOX/PEDESTAL, TRANSFORMER, METER |
| | GAS METER |
| | UTILITY VAULT / HAND HOLE |
| | END OF UTILITY LOCATE MARKING |
| | DECIDUOUS TREE |



SURVEY PERFORMED BY ENDPOINT SOLUTIONS CORP. ON 07/07/23 AND 07/11/23 SURVEY GRADE GPS AND CONVENTIONAL ROBOTIC SURVEY. COORDINATES ARE BASED ON NAD 83 WISCONSIN STATE PLANE, SOUTH ZONE, US FOOT, VERTICAL DATUM NAVD 88.

ALL UTILITIES SHOWN ARE APPROXIMATE AND SHOULD BE FIELD LOCATED AND VERIFIED.

REV	DATE
6	
5	
4	
3	
2	
1	
0	02/23/24

Endpoint Solutions
 6871 S. LOVERS LANE
 FRANKLIN, WI 53132
 PHONE: (414) 427-1200

PRE-CONSTRUCTION CONDITIONS
 TRINITY LUTHERAN CHURCH - SITE IMPROVEMENTS
 1052 WHITE ROCK AVENUE
 WAUKESHA, WI 53186

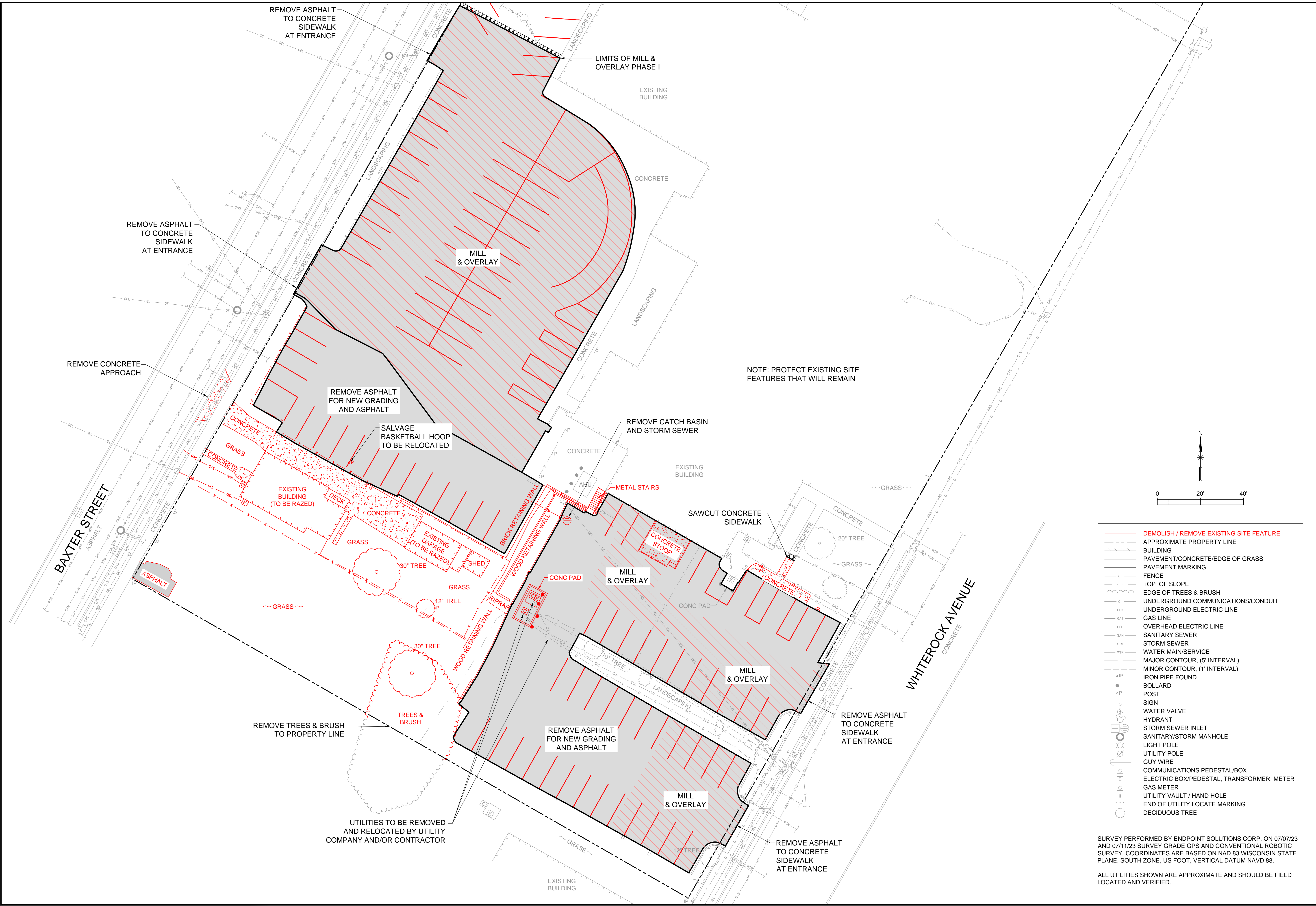
DRAWN BY: JAH/RWD DATE:
 CHECKED BY: NWD 02/23/2024
 APPROVED BY: JAH

PROJECT NO.
 525-025-001

SHEET NO.
C1

ISSUED FOR BIDDING

Feb. 23, 2024 8:27am PLOTTED BY: ndraskovich SAVED BY: ndraskovich
 P:\VJ - 525-025 - Trinity Lutheran Church - Waukesha (2022)\CAD\C2_525-025-001 Demolition Plan.dwg Layout1
 IMAGES: T:\Template Forms\CADD\Logos\Endpoint Solutions HI-Res.jpg; T:\Template Forms\CADD\Logos\Endpoint Solutions HI-Res.jpg;
 XREFS: ... \Survey Base.dwg; ... \Endpoint_22x34_Border-VIS Trinity.dwg



REV	DATE
6	
5	
4	
3	
2	
1	
0	02/23/24

Endpoint Solutions
 6871 S. LOVERS LANE
 FRANKLIN, WI 53132
 PHONE: (414) 427-1200

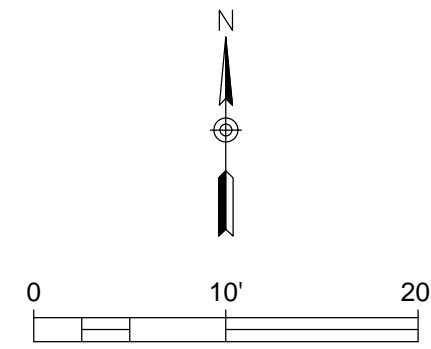
DEMOLITION PLAN
 TRINITY LUTHERAN CHURCH - SITE IMPROVEMENTS
 1052 WHITE ROCK AVENUE
 WAUKESHA, WI 53186

DRAWN BY: JAH/RWD DATE:
 CHECKED BY: NWD 02/23/2024
 APPROVED BY: JAH

PROJECT NO.
 525-025-001
 SHEET NO.
C2

- DEMOLISH / REMOVE EXISTING SITE FEATURE
- APPROXIMATE PROPERTY LINE
- BUILDING
- PAVEMENT/CONCRETE/EDGE OF GRASS
- PAVEMENT MARKING
- FENCE
- TOP OF SLOPE
- EDGE OF TREES & BRUSH
- UNDERGROUND COMMUNICATIONS/CONDUIT
- UNDERGROUND ELECTRIC LINE
- GAS LINE
- OVERHEAD ELECTRIC LINE
- SANITARY SEWER
- STORM SEWER
- WATER MAIN/SERVICE
- MAJOR CONTOUR, (5' INTERVAL)
- MINOR CONTOUR, (1' INTERVAL)
- IRON PIPE FOUND
- BOLLARD
- POST
- SIGN
- WATER VALVE
- HYDRANT
- STORM SEWER INLET
- SANITARY/STORM MANHOLE
- LIGHT POLE
- UTILITY POLE
- GUY WIRE
- COMMUNICATIONS PEDESTAL/BOX
- ELECTRIC BOX/PEDESTAL, TRANSFORMER, METER
- GAS METER
- UTILITY VAULT / HAND HOLE
- END OF UTILITY LOCATE MARKING
- DECIDUOUS TREE

SURVEY PERFORMED BY ENDPOINT SOLUTIONS CORP. ON 07/07/23 AND 07/11/23 SURVEY GRADE GPS AND CONVENTIONAL ROBOTIC SURVEY. COORDINATES ARE BASED ON NAD 83 WISCONSIN STATE PLANE, SOUTH ZONE, US FOOT, VERTICAL DATUM NAVD 88.
 ALL UTILITIES SHOWN ARE APPROXIMATE AND SHOULD BE FIELD LOCATED AND VERIFIED.

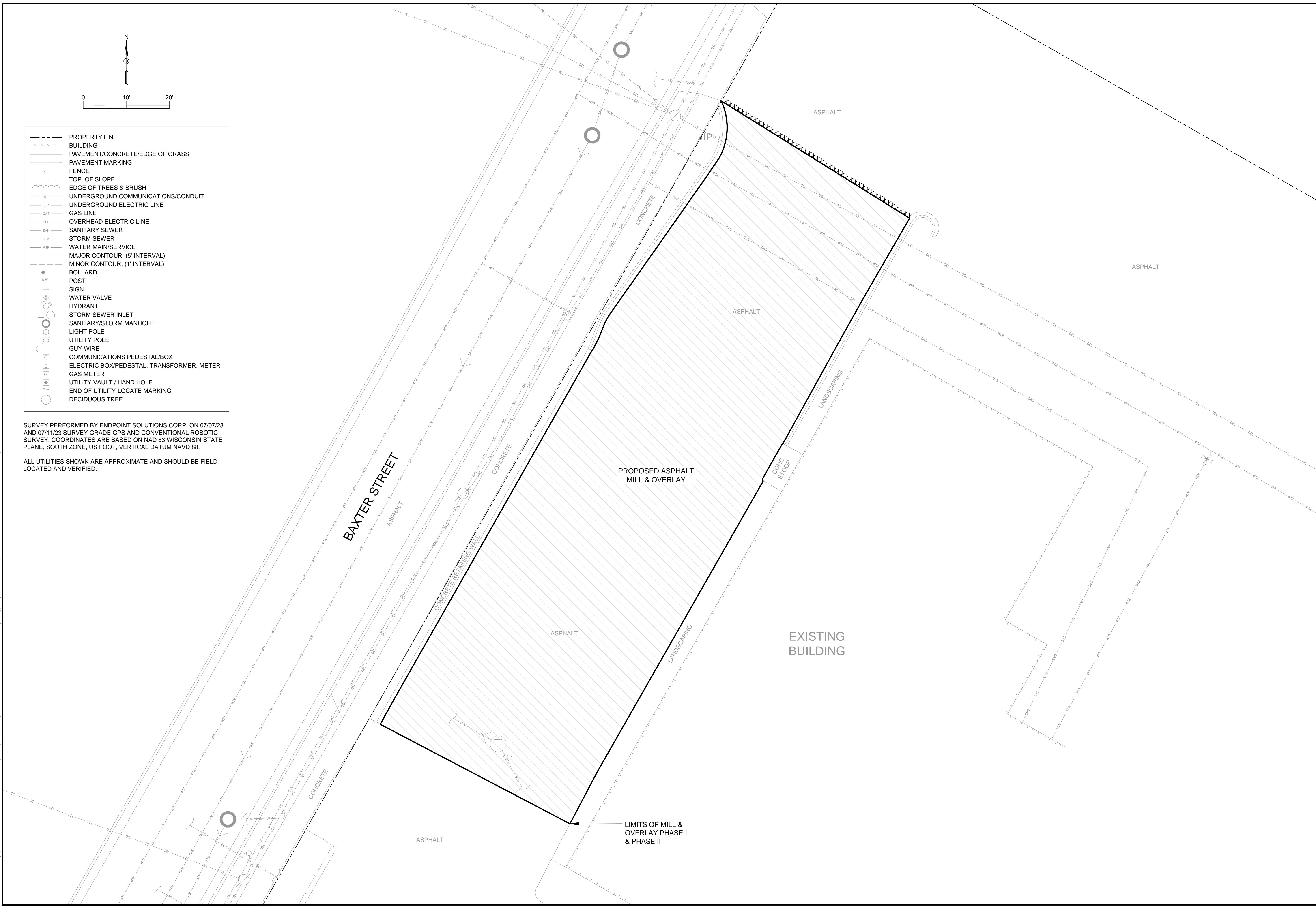


	PROPERTY LINE
	BUILDING
	PAVEMENT/CONCRETE/EDGE OF GRASS
	PAVEMENT MARKING
	FENCE
	TOP OF SLOPE
	EDGE OF TREES & BRUSH
	UNDERGROUND COMMUNICATIONS/CONDUIT
	UNDERGROUND ELECTRIC LINE
	GAS LINE
	OVERHEAD ELECTRIC LINE
	SANITARY SEWER
	STORM SEWER
	WATER MAIN/SERVICE
	MAJOR CONTOUR, (5' INTERVAL)
	MINOR CONTOUR, (1' INTERVAL)
	BOLLARD
	POST
	SIGN
	WATER VALVE
	HYDRANT
	STORM SEWER INLET
	SANITARY/STORM MANHOLE
	LIGHT POLE
	UTILITY POLE
	GUY WIRE
	COMMUNICATIONS PEDESTAL/BOX
	ELECTRIC BOX/PEDESTAL, TRANSFORMER, METER
	GAS METER
	UTILITY VAULT / HAND HOLE
	END OF UTILITY LOCATE MARKING
	DECIDUOUS TREE

SURVEY PERFORMED BY ENDPOINT SOLUTIONS CORP. ON 07/07/23 AND 07/11/23 SURVEY GRADE GPS AND CONVENTIONAL ROBOTIC SURVEY. COORDINATES ARE BASED ON NAD 83 WISCONSIN STATE PLANE, SOUTH ZONE, US FOOT, VERTICAL DATUM NAVD 88.

ALL UTILITIES SHOWN ARE APPROXIMATE AND SHOULD BE FIELD LOCATED AND VERIFIED.

Feb. 23, 2024 8:27am PLOTTED BY: ndraskovich SAVED BY: ndraskovich
 P:\V5 - 525\025 - Trinity Lutheran Church - Waukesha (2022)\CAD\C3.1_525-025-001 Proposed NW Parking Lot Mill and Overlay.dwg Layout1
 IMAGES: T:\Template Forms\CADD\Logos\Endpoint Solutions HI-Res.jpg; T:\Template Forms\CADD\Logos\Endpoint Solutions HI-Res.jpg;
 XREFS: ... \Survey\525-025-001 Survey Base.dwg; ... \Endpoint_22x34 Border-VIS Trinity.dwg; ... \Proposed Layout - Trinity - 525-025-001.dwg



REV	DATE	DESCRIPTION
6		
5		
4		
3		
2		
1		
0	02/23/24	ISSUED FOR BIDDING

Endpoint Solutions
 6871 S. LOVERS LANE
 FRANKLIN, WI 53132
 PHONE: (414) 427-1200

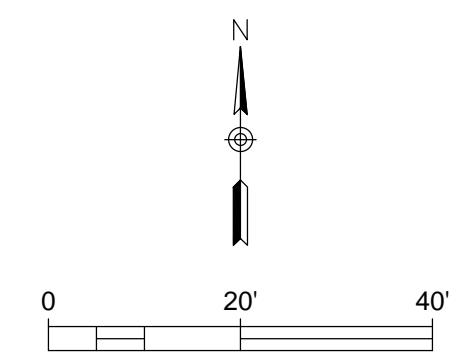
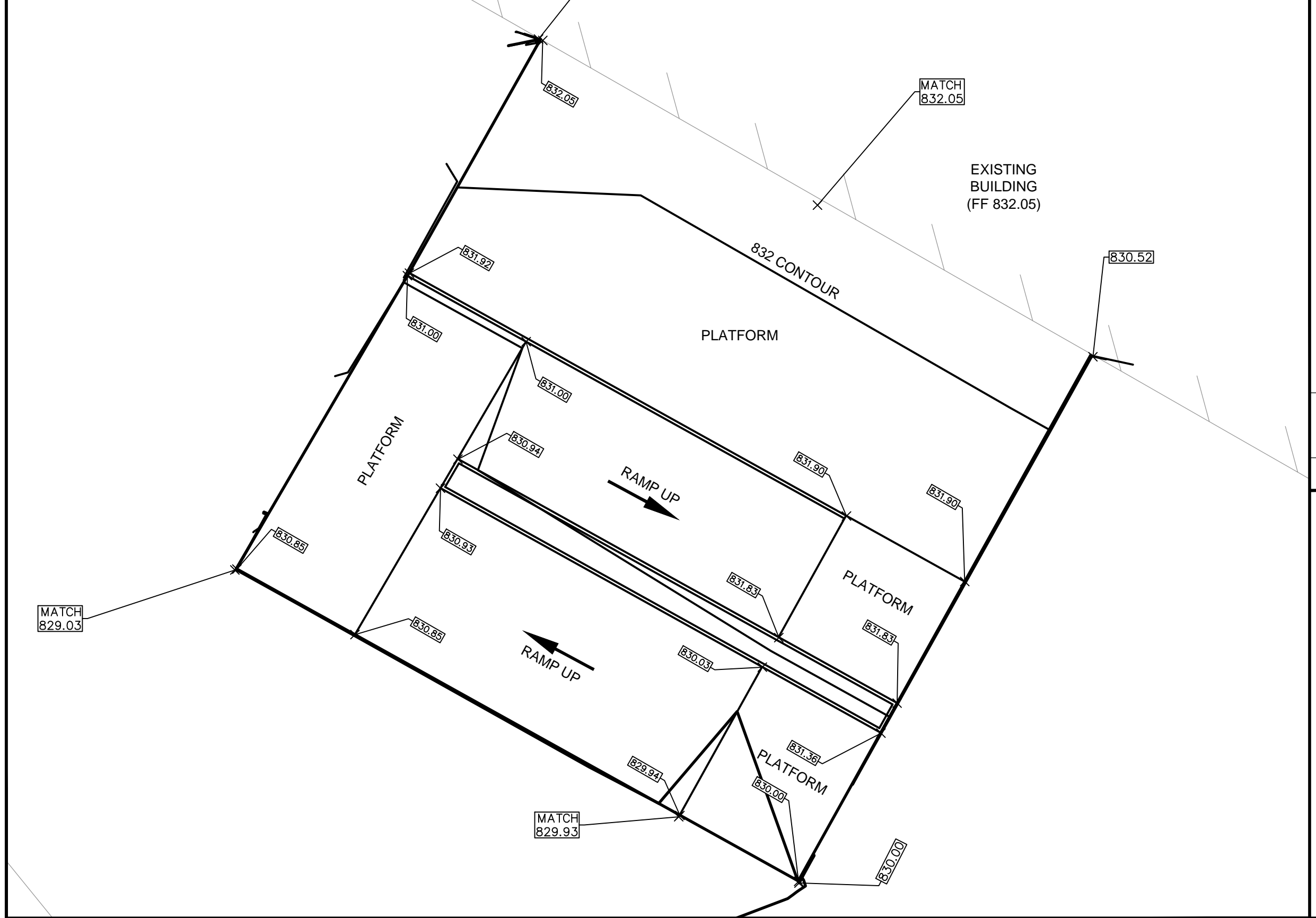
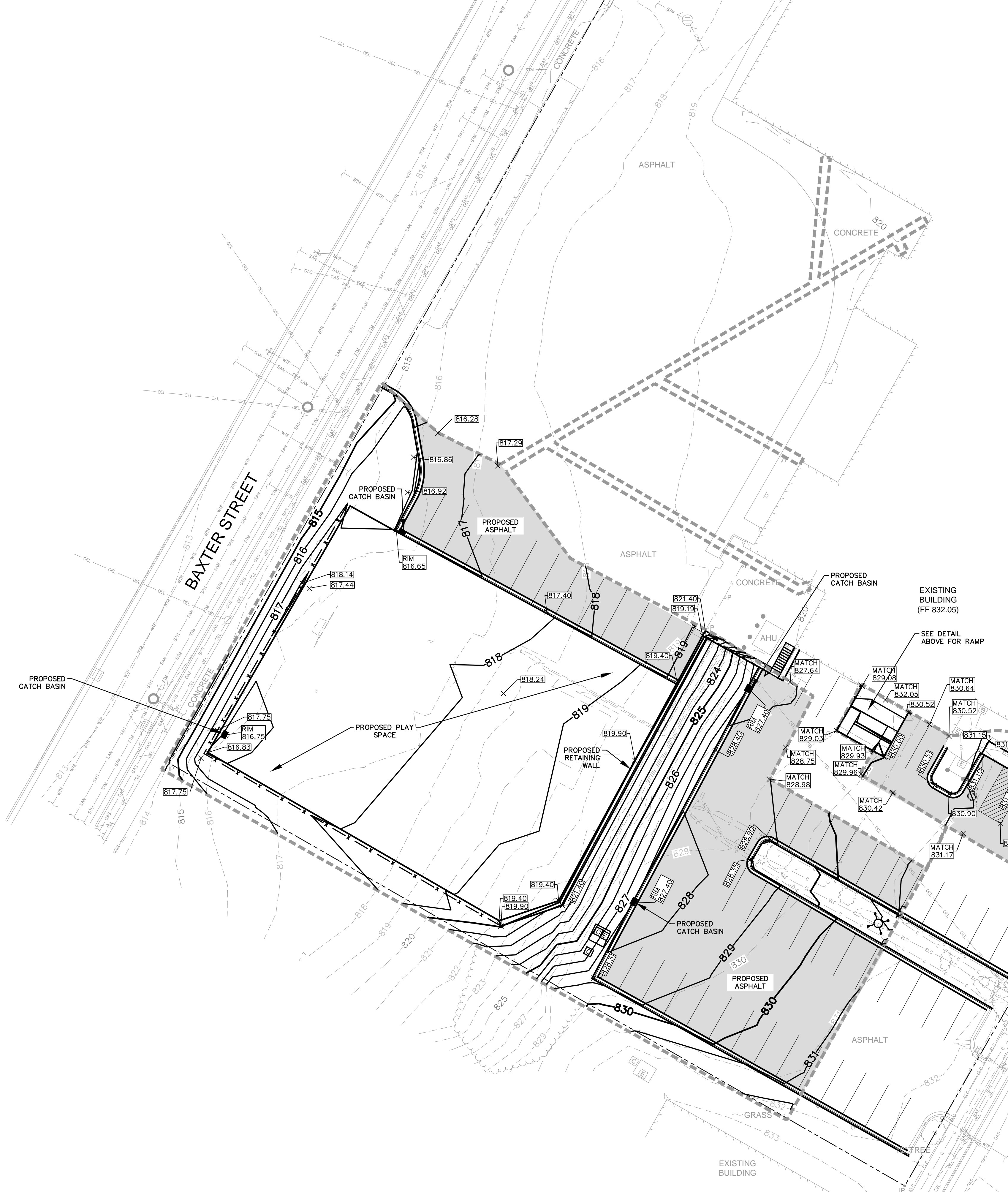
PROPOSED NORTHWEST PARKING LOT - MILL & OVERLAY
 TRINITY LUTHERAN CHURCH - SITE IMPROVEMENTS
 1052 WHITE ROCK AVENUE
 WAUKESHA, WI 53186

DRAWN BY: JAH/RWD DATE:
 CHECKED BY: NWD 02/23/2024
 APPROVED BY: JAH

PROJECT NO.
 525-025-001

SHEET NO.
C3.1

Feb. 23, 2024 8:26am PLOTTED BY: ndraskovich SAVED BY: ndraskovich
 P:\VJ - 525-025 - Trinity Lutheran Church - Waukesha (2022)\CAD\C4_525-025-001 Proposed Grading & Erosion Control Plan.dwg Layout1
 IMAGES: T:\Template Forms\CADD\Logos\Endpoint Solutions HI-Res.jpg; T:\Template Forms\CADD\Logos\Endpoint Solutions HI-Res.jpg;
 XREFS: ..\Survey\525-025-001 Survey Base.dwg; ..\Proposed Grading - Trinity - 525-025-001.dwg; ..\Proposed Layout - Trinity - 525-025-001.dwg; ..\Endpoint 22x34 Border-VIS Trinity.dwg



- PROPERTY LINE
- BUILDING
- PAVEMENT/CONCRETE/EDGE OF GRASS
- PAVEMENT MARKING
- x- FENCE
- TOP OF SLOPE
- EDGE OF TREES & BRUSH
- c- UNDERGROUND COMMUNICATIONS/CONDUIT
- ELC- UNDERGROUND ELECTRIC LINE
- GAS- GAS LINE
- OEL- OVERHEAD ELECTRIC LINE
- SAN- SANITARY SEWER
- STM- STORM SEWER
- WTR- WATER MAIN/SERVICE
- MAJOR CONTOUR, (5' INTERVAL)
- MINOR CONTOUR, (1' INTERVAL)
- BOLLARD
- POST
- SIGN
- WATER VALVE
- HYDRANT
- STORM SEWER INLET
- SANITARY/STORM MANHOLE
- LIGHT POLE
- UTILITY POLE
- GUY WIRE
- COMMUNICATIONS PEDESTAL/BOX
- ELECTRIC BOX/PEDESTAL, TRANSFORMER, METER
- GAS METER
- UTILITY VAULT / HAND HOLE
- END OF UTILITY LOCATE MARKING
- DECIDUOUS TREE

REV.	DATE
6	
5	
4	
3	
2	
1	
0	02/23/24

Endpoint Solutions
 6871 S. LOVERS LANE
 FRANKLIN, WI 53132
 PHONE: (414) 427-1200

PROPOSED GRADING PLAN

TRINITY LUTHERAN CHURCH - SITE IMPROVEMENTS
 1052 WHITE ROCK AVENUE
 WAUKESHA, WI 53186

DRAWN BY: JAH/RWD DATE:
 CHECKED BY: NWD 02/23/2024
 APPROVED BY: JAH

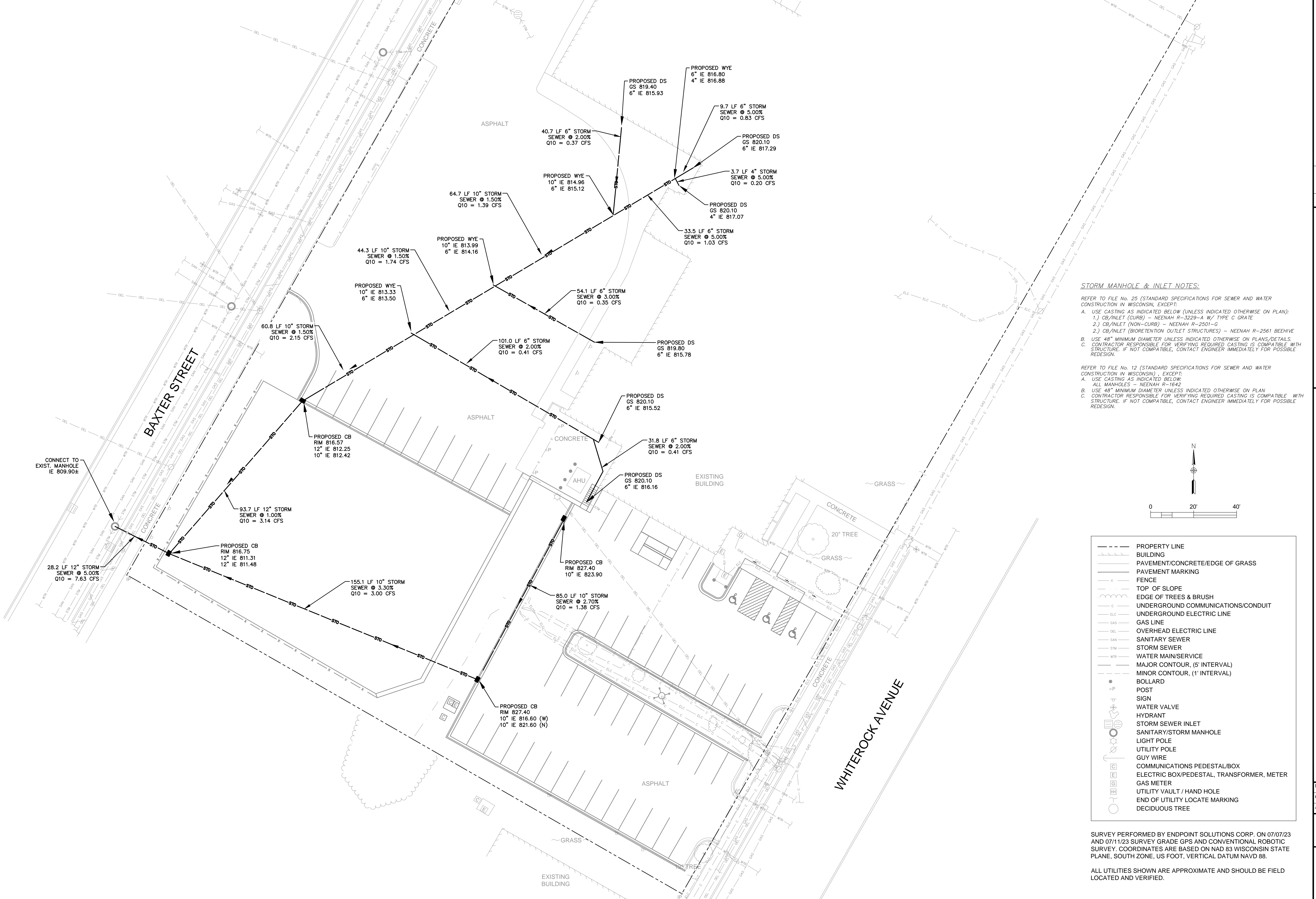
PROJECT NO.
 525-025-001

SHEET NO.
C4

SURVEY PERFORMED BY ENDPOINT SOLUTIONS CORP. ON 07/07/23 AND 07/11/23 SURVEY GRADE GPS AND CONVENTIONAL ROBOTIC SURVEY. COORDINATES ARE BASED ON NAD 83 WISCONSIN STATE PLANE, SOUTH ZONE, US FOOT, VERTICAL DATUM NAVD 88.

ALL UTILITIES SHOWN ARE APPROXIMATE AND SHOULD BE FIELD LOCATED AND VERIFIED.

Feb. 23, 2024 8:27am PLOTTED BY: ndraskovich SAVED BY: ndraskovich
 P:\V5 - 525\025 - Trinity Lutheran Church - Waukesha (2022)\CAD\C5_525-025-001 Proposed Utility Plan.dwg Layout1
 IMAGES: T:\Template Forms\CADD\Logos\Endpoint Solutions HI-Res.jpg; T:\Template Forms\CADD\Logos\Endpoint Solutions HI-Res.jpg;
 XREFS: ..\Survey\525-025-001 Survey Base.dwg; ..\Proposed Grading - Trinity - 525-025-001.dwg; ..\Proposed Layout - Trinity - 525-025-001.dwg; ..\Endpoint 22x34 Border - W5 Trinity.dwg



REV.	DATE
6	
5	
4	
3	
2	
1	
0	02/23/24

Endpoint Solutions
 6871 S. LOVERS LANE
 FRANKLIN, WI 53132
 PHONE: (414) 427-1200

PROPOSED UTILITY PLAN

TRINITY LUTHERAN CHURCH - SITE IMPROVEMENTS
 1052 WHITE ROCK AVENUE
 WAUKESHA, WI 53186

DRAWN BY: JAH/RWD DATE:
 CHECKED BY: NWD 02/23/2024
 APPROVED BY: JAH

PROJECT NO.
 525-025-001

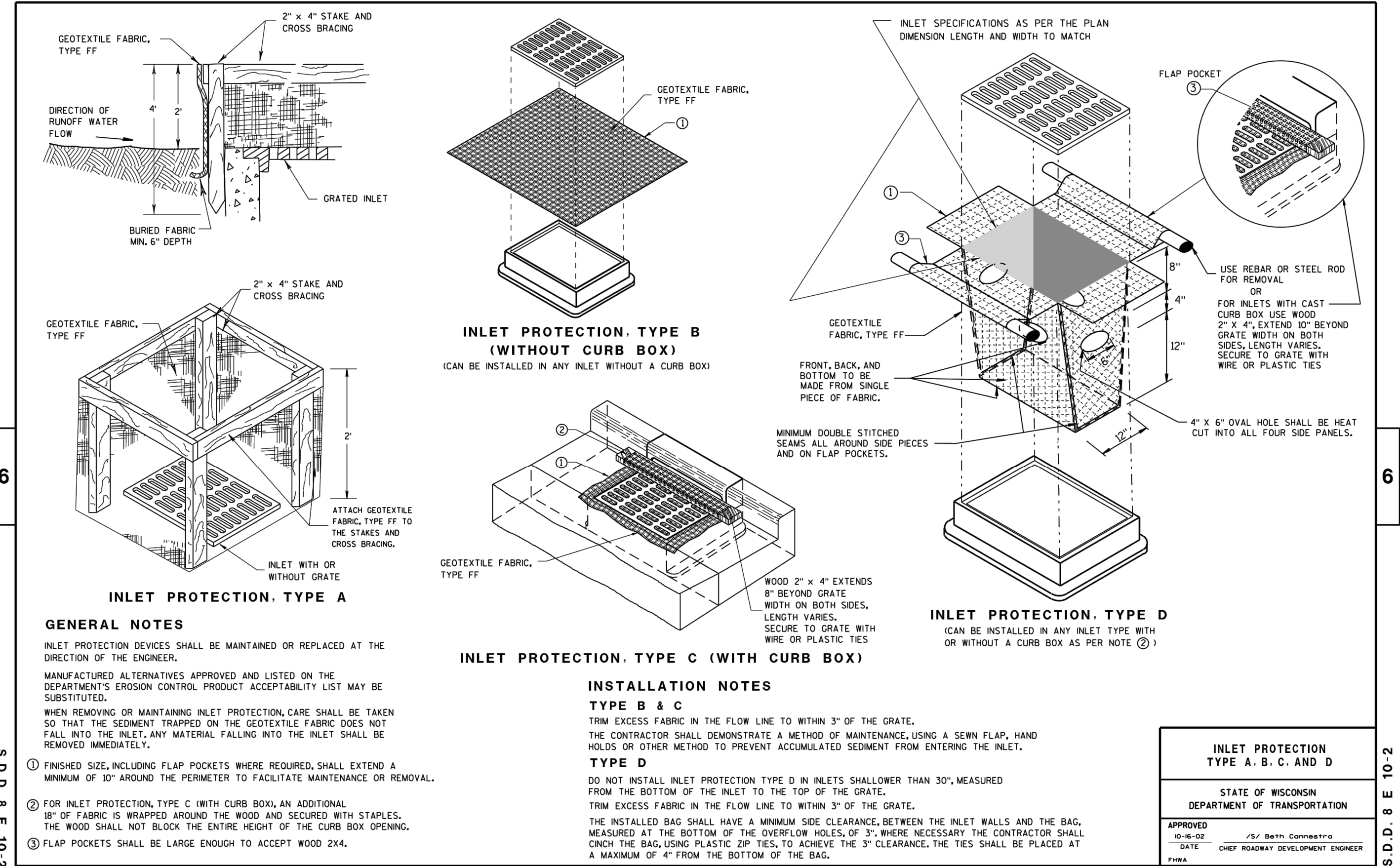
SHEET NO.
C5

- PROPERTY LINE
- BUILDING
- PAVEMENT/CONCRETE/EDGE OF GRASS
- PAVEMENT MARKING
- FENCE
- TOP OF SLOPE
- EDGE OF TREES & BRUSH
- UNDERGROUND COMMUNICATIONS/CONDUIT
- UNDERGROUND ELECTRIC LINE
- GAS LINE
- OVERHEAD ELECTRIC LINE
- SANITARY SEWER
- STORM SEWER
- WATER MAIN/SERVICE
- MAJOR CONTOUR, (5' INTERVAL)
- MINOR CONTOUR, (1' INTERVAL)
- BOLLARD
- POST
- SIGN
- WATER VALVE
- HYDRANT
- STORM SEWER INLET
- SANITARY/STORM MANHOLE
- LIGHT POLE
- UTILITY POLE
- GUY WIRE
- COMMUNICATIONS PEDESTAL/BOX
- ELECTRIC BOX/PEDESTAL, TRANSFORMER, METER
- GAS METER
- UTILITY VAULT / HAND HOLE
- END OF UTILITY LOCATE MARKING
- DECIDUOUS TREE

SURVEY PERFORMED BY ENDPOINT SOLUTIONS CORP. ON 07/07/23 AND 07/11/23 SURVEY GRADE GPS AND CONVENTIONAL ROBOTIC SURVEY. COORDINATES ARE BASED ON NAD 83 WISCONSIN STATE PLANE, SOUTH ZONE, US FOOT, VERTICAL DATUM NAVD 88.

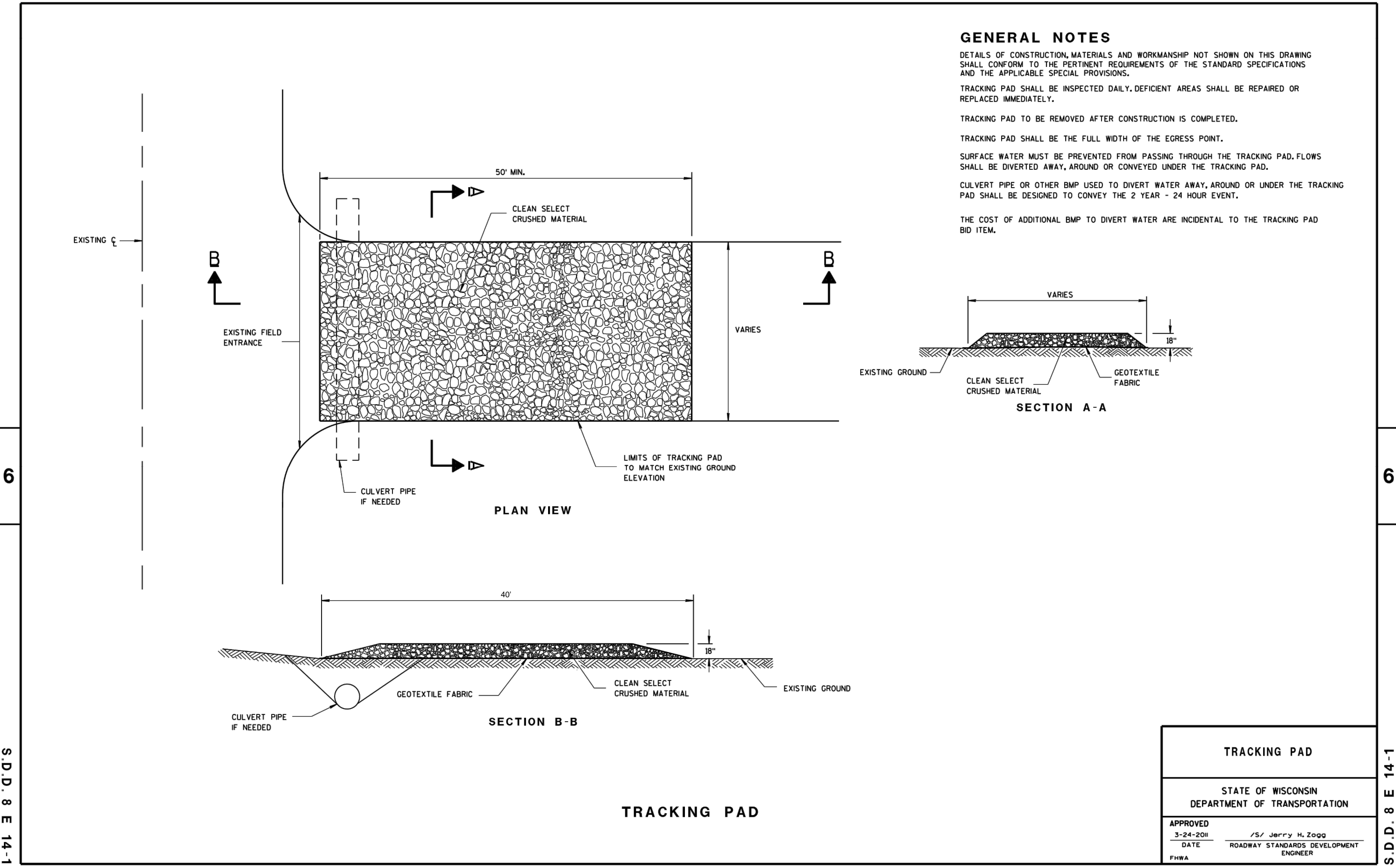
ALL UTILITIES SHOWN ARE APPROXIMATE AND SHOULD BE FIELD LOCATED AND VERIFIED.

8E10: Inlet Protection Type A, B, C and D



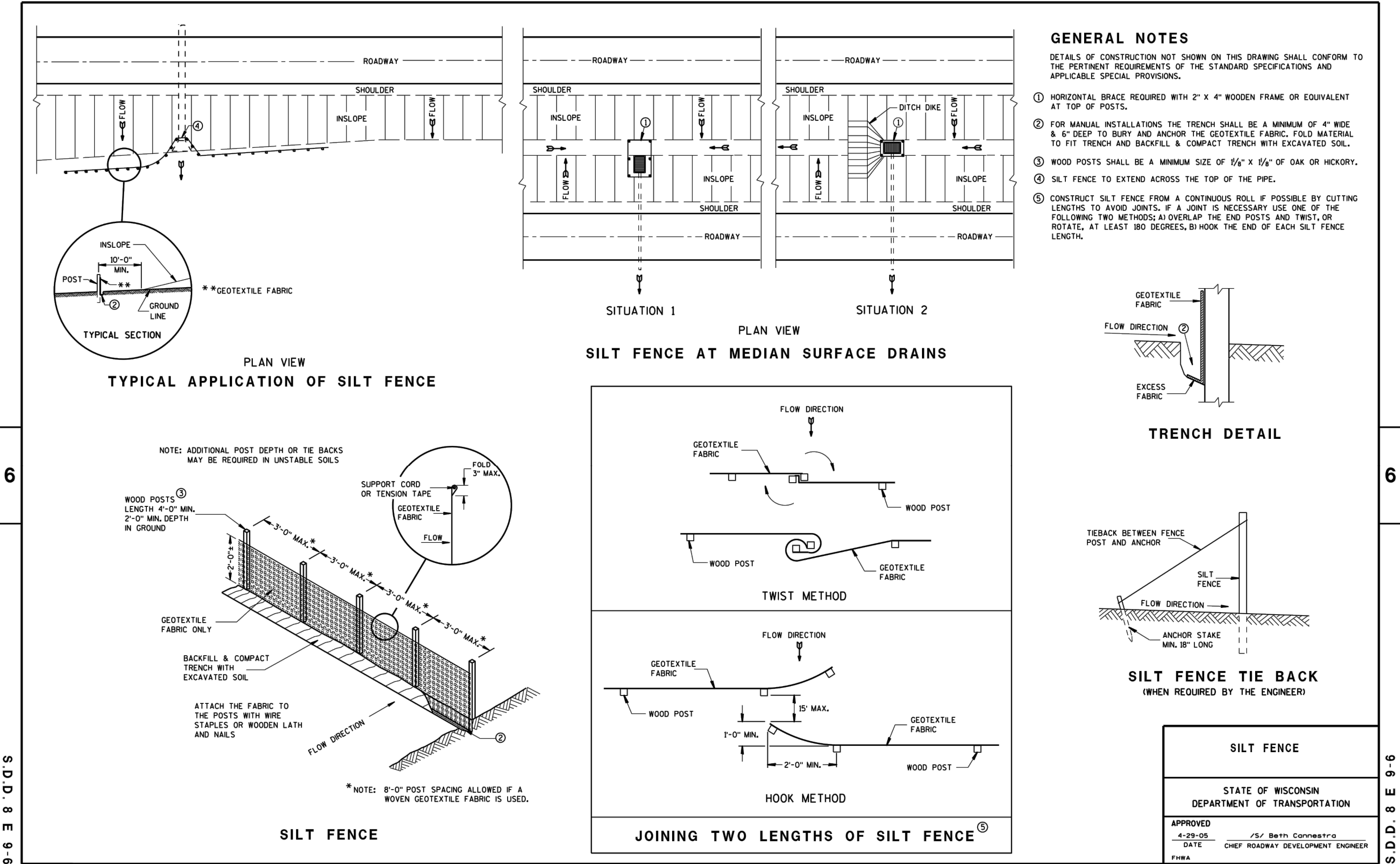
INLET PROTECTION
NOT TO SCALE

8E14: Tracking Pad



TRACKING PAD
NOT TO SCALE

8E9: Silt Fence



SILT FENCE
NOT TO SCALE

EROSION AND SEDIMENT CONTROL

- CONSTRUCT AND MAINTAIN EROSION CONTROL MEASURES IN ACCORDANCE WITH THE WISCONSIN DEPARTMENT OF NATURAL RESOURCES (WDNR) CHAPTERS NR 151 AND NR 216, WISCONSIN ADMINISTRATIVE CODE, AND APPROPRIATE WDNR TECHNICAL STANDARDS. EROSION AND SEDIMENT CONTROL PRODUCTS SHALL BE LISTED IN THE WISCONSIN DEPARTMENT OF TRANSPORTATION PRODUCT ACCEPTABILITY LIST (WisDOT PAL). THE CONTRACTOR IS RESPONSIBLE FOR OBTAINING COPIES OF THESE STATE REQUIREMENTS, TECHNICAL STANDARDS, AND WisDOT PAL.
- IMPLEMENT EROSION AND SEDIMENT CONTROL BEST MANAGEMENT PRACTICES (BMPs) PRIOR TO SOIL DISTURBING ACTIVITIES (E.G., CLEARING, GRUBBING, TOPSOIL STRIPING, EXCAVATION, MATERIAL STOCKPILING, ETC.). INSTALL EROSION CONTROL MEASURES AROUND STOCKPILE LOCATIONS.
- MINIMIZE DISTURBED AREA BY PHASING OR SEQUENCING CONSTRUCTION AND PRESERVING EXISTING VEGETATION WHERE POSSIBLE.
- DIVERT STORM WATER AWAY FROM DISTURBED OR EXPOSED AREAS WHEN POSSIBLE.
- PROTECT ADJACENT PROPERTIES WITH SEDIMENT BALE BARRIERS OR SILT FENCE UNTIL CONSTRUCTION IS COMPLETE IN ACCORDANCE WITH WDNR TECHNICAL STANDARDS 1055 OR 1056, RESPECTIVELY.
- INSTALL A GRAVEL TRACKING PAD IN ACCORDANCE WITH WDNR TECHNICAL STANDARD 1057. PAVED SURFACES ADJACENT TO CONSTRUCTION SITE VEHICLE ACCESS SHALL BE SWEEPED AND/OR SCRAPED PERIODICALLY TO REMOVE SOIL, DIRT, AND/OR DUST. ADJACENT ROADS ARE TO CLEANED IMMEDIATELY IF ANY SEDIMENT TRANSFER AND TRACKING OCCURS.
- PROTECT INLETS, CATCH BASINS, AND OTHER CONVEYANCE STRUCTURES WITH STRAW BALES, FILTER FABRIC, OR OTHER APPROPRIATE MEASURES IN ACCORDANCE WITH WDNR TECHNICAL STANDARD 1060.
- DURING DEWATERING ACTIVITIES, UTILIZE A COMPARTMENTED CONTAINER, SETTLING BASIN, FILTER, OR OTHER APPROPRIATE BEST MANAGEMENT PRACTICE FOR TREATING SEDIMENT-LADEN WATER PRIOR TO DISCHARGE OFF-SITE IN ACCORDANCE WITH WDNR TECHNICAL STANDARD 1061.
- INSPECT THE SITE REGULARLY AND PROPERLY MAINTAIN BMPs, ESPECIALLY AFTER RAINSTORMS. AT MINIMUM, INSPECTIONS OF CONSTRUCTION BMPs ARE REQUIRED AT LEAST ONCE EVERY SEVEN DAYS AND WITHIN 24 HOURS AFTER A PRECIPITATION EVENT OF 0.5 INCH OR MORE.
- BMPs MUST BE REPAIRED OR REPLACED WITHIN 24 HOURS OF INSPECTION OR NOTIFICATION OF A PROBLEM.
- KEEP THE CONSTRUCTION SITE CLEAN BY PUTTING TRASH IN TRASH CANS, KEEPING STORAGE BINS COVERED, AND PREVENTING OR REMOVING EXCESS SEDIMENT ON ROADS AND OTHER IMPERVIOUS SURFACES.
- SITE RESTORATION AND STABILIZATION MUST BE COMPLETED WITHIN 7 DAYS OF INACTIVITY.

Endpoint Solutions
6871 S. LOVERS LANE
FRANKLIN, WI 53132
PHONE: (414) 427-1200

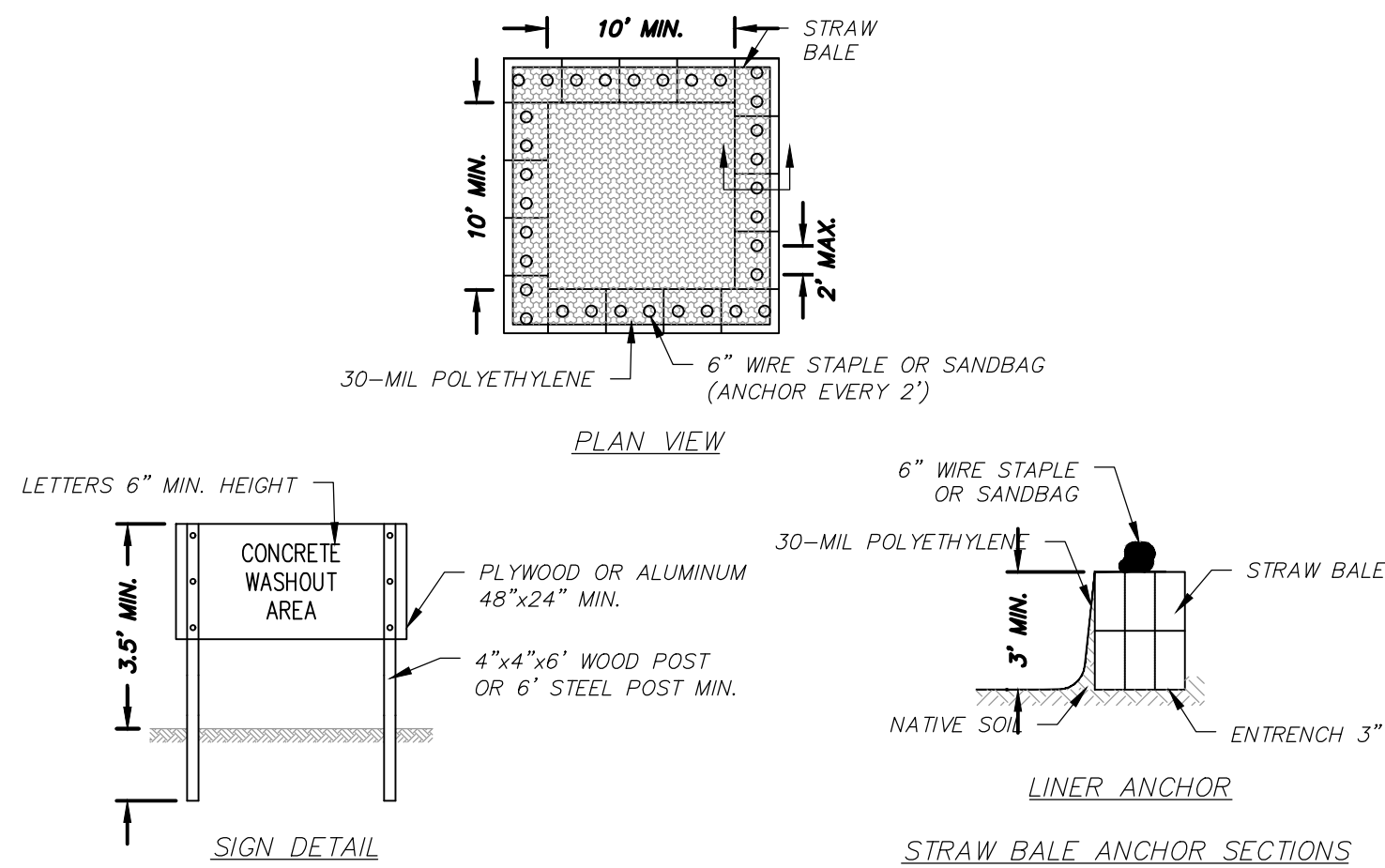
REV	DATE	DESCRIPTION
6		
5		
4		
3		
2		
1		
0	02/23/24	ISSUED FOR BIDDING

EROSION CONTROL DETAILS
TRINITY LUTHERAN CHURCH - SITE IMPROVEMENTS
1052 WHITE ROCK AVENUE
WAUKESHA, WI 53186

DRAWN BY: JAH/RWD DATE: 02/23/2024
CHECKED BY: NWD
APPROVED BY: JAH

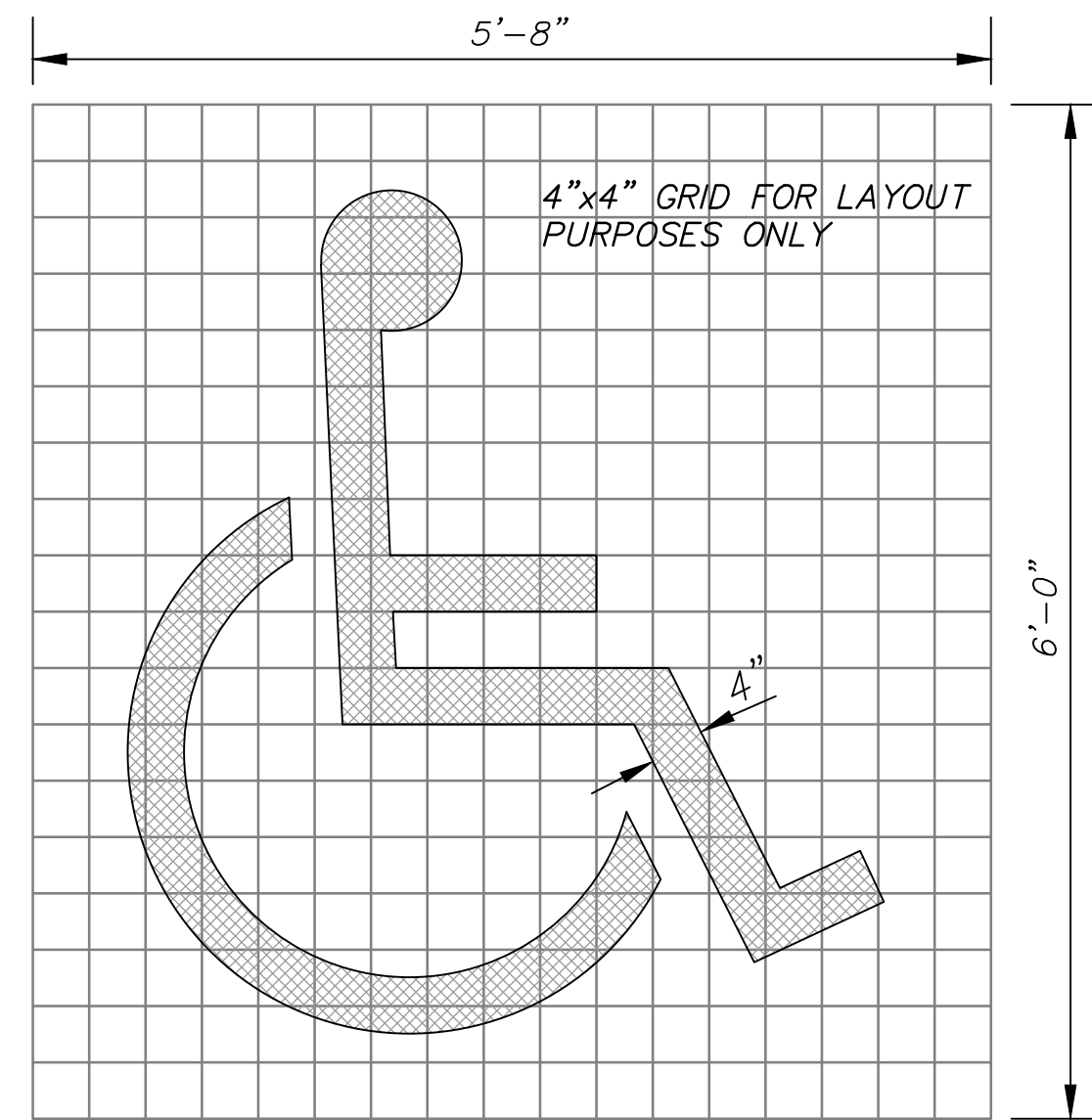
PROJECT NO. 525-025-001
SHEET NO. C6

Feb 23, 2024 8:17am PLOTTED BY: ndraskovich SAVED BY: ndraskovich (2022) CAD\06_525-025-001 Erosion Control Details.dwg Layout1
P:\VIS - 525\025 - Trinity Lutheran Church - Waukesha (2022)\CAD\06_525-025-001 Erosion Control Details.dwg Layout1
IMAGES: T:\Template Forms\CADD\Logos\Endpoint Solutions HI-Res.jpg
XREFS: \Endpoint 22x34 Border-VIS Trinity.dwg

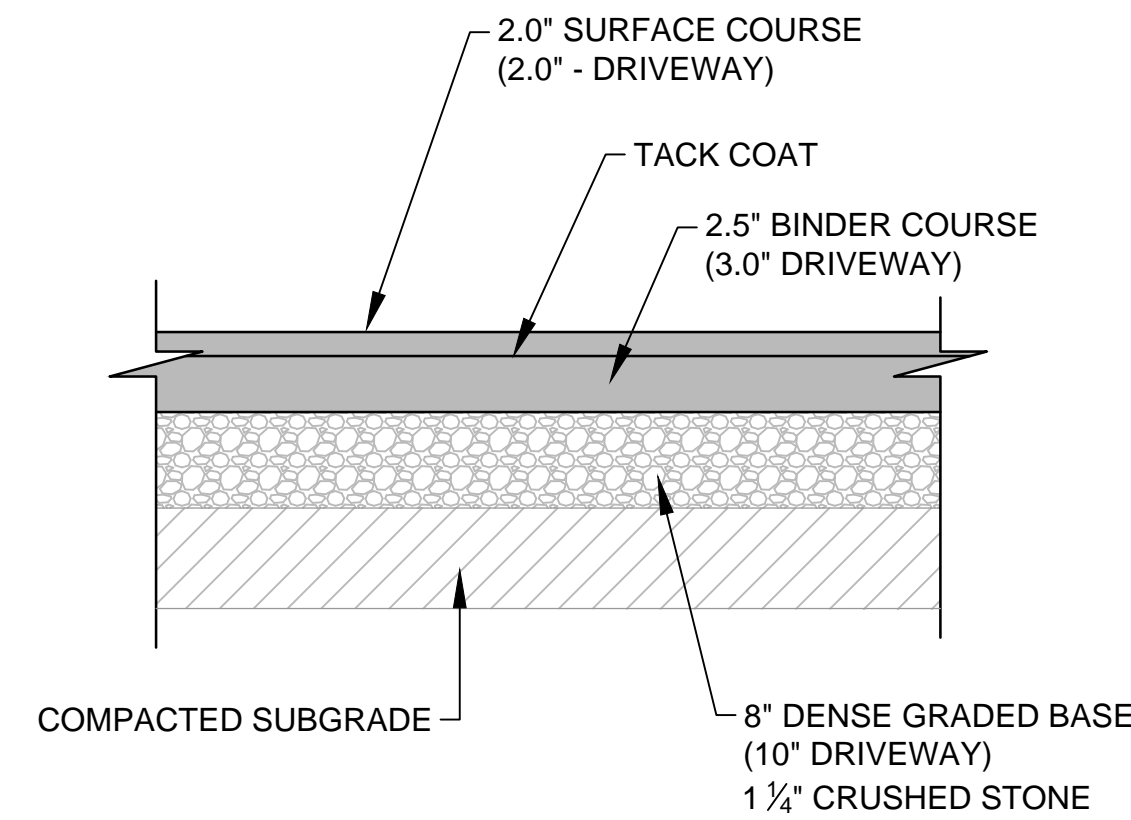


- NOTES:
1. MAINTAINING TEMPORARY CONCRETE WASHOUT FACILITIES SHALL INCLUDE REMOVING AND DISPOSING OF HARDENED CONCRETE AND/OR SLURRY AND RETURNING THE FACILITIES TO A FUNCTIONAL CONDITION.
 2. FACILITY SHALL BE CLEANED OR RECONSTRUCTED IN A NEW AREA ONCE WASHOUT BECOMES TWO-THIRDS FULL.
 3. EACH STRAW BALE IS TO BE STAKED IN PLACE USING (2) 2"x2"x4" WOODEN STAKES.

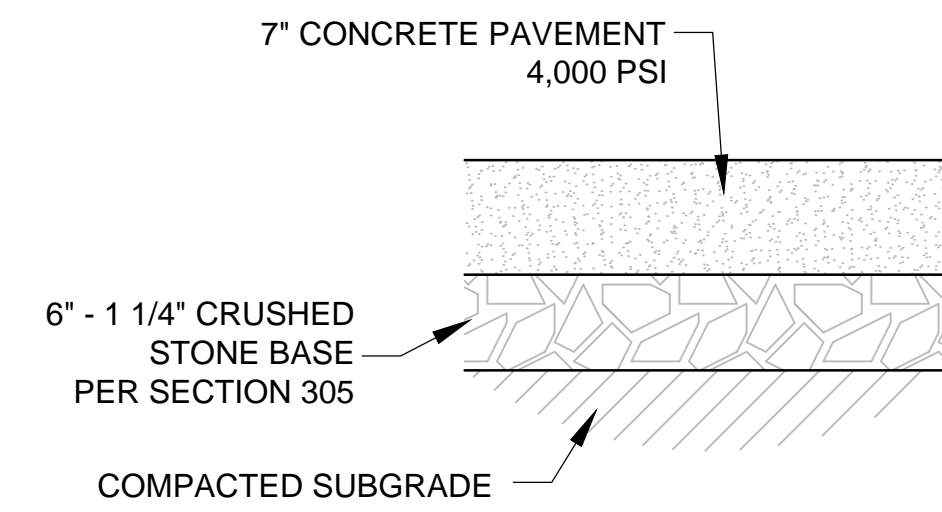
TEMPORARY CONCRETE WASHOUT FACILITY - STRAW BALE
NOT TO SCALE



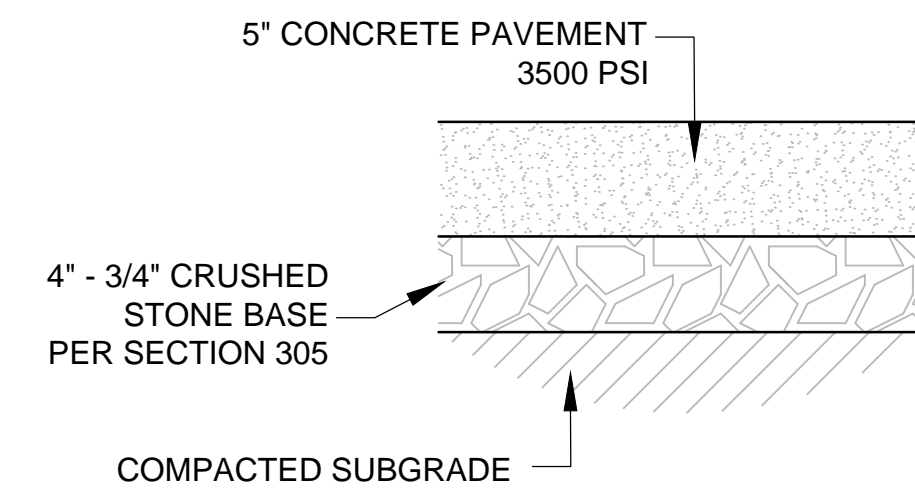
PAINTED ADA SYMBOL
NOT TO SCALE



TYPICAL ASPHALT PAVEMENT
NOT TO SCALE



TYPICAL CONCRETE PAVEMENT
NOT TO SCALE



CONCRETE SIDEWALK DETAIL
NOT TO SCALE

GENERAL GRADING NOTES

1. THE PROPOSED IMPROVEMENTS SHALL BE CONSTRUCTED ACCORDING TO THE D.O.T. STANDARD SPECIFICATIONS, LOCAL ORDINANCES AND SPECIFICATIONS, AND RECOMMENDATIONS IN THE GEOTECHNICAL REPORT.
2. THE CONTRACTOR SHALL ASSUME SOLE RESPONSIBILITY FOR THE COMPUTATIONS OF ALL GRADING AND FOR ACTUAL LAND BALANCE, INCLUDING UTILITY TRENCH SPOIL. THE CONTRACTOR SHALL IMPORT OR EXPORT MATERIAL AS NECESSARY TO COMPLETE THE PROJECT.
3. GRADING SHALL CONSIST OF CLEARING AND GRUBBING EXISTING VEGETATION, STRIPPING TOPSOIL, REMOVAL OF EXISTING PAVEMENT OR FOUNDATIONS, IMPORTING OR EXPORTING MATERIAL TO ACHIEVE AND ON-SITE EARTHWORK BALANCE, GRADING THE PROPOSED BUILDING PADS AND PAVEMENT AREAS, SCARIFYING AND FINAL COMPACTION OF THE PAVEMENT SUBGRADE, AND PLACEMENT OF TOPSOIL.
4. THE CONTRACTOR SHALL MAINTAIN SITE DRAINAGE THROUGHOUT CONSTRUCTION.
5. EROSION AND SEDIMENT CONTROL MEASURES ARE REQUIRED AS PART OF THIS PROJECT. CONSTRUCTION ACTIVITIES MUST COMPLY WITH ALL PROVISIONS OF LOCAL, STATE AND FEDERAL REGULATIONS AS WELL AS THE SITE SPECIFIC SWPPP (IF APPLICABLE). ALL LAND DISTURBING ACTIVITIES MAY BE SUBJECT TO INSPECTION BY LOCAL AUTHORITIES AND THE WISCONSIN DEPARTMENT OF NATURAL RESOURCES.
6. CONTRACTOR SHALL MINIMIZE CLEARING AND DISTURBANCE TO THE ENVIRONMENT TO THE EXTENT POSSIBLE. CONTRACTOR RESPONSIBLE FOR RESTORATION OF ALL DISTURBED AREAS.
7. RUBBISH, TRASH, GARBAGE, LITTER OR OTHER SUCH MATERIALS SHALL BE DISPOSED INTO SEALED CONTAINERS. MATERIALS SHALL BE PREVENTED FROM LEAVING THE SITE THROUGH THE ACTION OF WIND OR STORM WATER DISCHARGE INTO DRAINAGE DITCHES OR WATERS OF THE STATE. THE CONTRACTOR SHALL BE SOLELY RESPONSIBLE FOR THE REMOVAL OF CONSTRUCTION WASTE IN ACCORDANCE WITH ALL APPLICABLE FEDERAL, STATE AND LOCAL REGULATIONS.
8. SILT FENCE AND OTHER EROSION CONTROL FACILITIES MUST BE INSTALLED PRIOR TO CONSTRUCTION OR ANY OTHER LAND DISTURBING ACTIVITY. THE CONTRACTOR SHALL BE RESPONSIBLE FOR REMOVING ALL EROSION CONTROL FACILITIES ONCE THE SITE HAS STABILIZED.
9. NO FILL SHALL BE PLACED ON A WET OR SOFT SUBGRADE. THE SUBGRADE SHALL BE PROOF-ROLLED AND INSPECTED BY THE GEOTECHNICAL ENGINEER BEFORE ANY MATERIAL IS PLACED.
10. ALL FILL SHALL BE CONSIDERED STRUCTURAL FILL AND SHALL BE PLACED IN ACCORDANCE WITH THE GEOTECHNICAL REPORT
11. BEFORE PROCEEDING WITH ANY UTILITY CONSTRUCTION, THE CONTRACTOR SHALL EXCAVATE EACH EXISTING LATERAL OR POINT OF CONNECTION AND VERIFY THE SIZE, LOCATION AND ELEVATION OF ALL UTILITIES.
12. TEMPORARY EROSION CONTROL MATTING SHALL BE PLACED ON ALL SLOPES THAT ARE STEEPER THAN 4:1.
13. ALL PROPOSED CONTOURS REPRESENT FINAL FINISHED GRADE ELEVATIONS.

GENERAL NOTES

1. THE BIDDER WILL BE SOLELY RESPONSIBLE FOR QUANTITIES AND ESTIMATE OF WORK REQUIRED AND SHALL STATE SUCH QUANTITIES IN THEIR BID.
2. THE CONTRACTOR SHALL INDEMNIFY THE OWNER, THE ENGINEER, AND THE MUNICIPALITY, THEIR AGENTS, ETC, FROM ALL LIABILITY INVOLVED WITH THE CONSTRUCTION OF THIS PROJECT.
3. SITE SAFETY IS THE RESPONSIBILITY OF THE CONTRACTOR.
4. SOIL CONDITIONS SHALL BE VERIFIED BY THE CONTRACTOR PRIOR TO COMMENCEMENT OF CONSTRUCTION. A GEOTECHNICAL REPORT IS AVAILABLE FROM THE OWNER. THE CONTRACTOR SHALL ABIDE BY THE RECOMMENDATIONS OF THE GEOTECHNICAL ENGINEER.
5. THE CONTRACTOR SHALL OBTAIN AND PAY FOR ALL PERMITS REQUIRED FOR EXECUTION OF THE WORK. THE CONTRACTOR SHALL CONDUCT THEIR WORK ACCORDING TO THE REQUIREMENTS OF THE PERMITS.
6. THE CONTRACTOR IS RESPONSIBLE FOR EXAMINING ALL SITE CONDITIONS PRIOR TO COMMENCEMENT OF CONSTRUCTION AND SHALL COMPARE FIELD CONDITIONS WITH DRAWINGS.
7. CONTRACTOR SHALL PROTECT ADJACENT PROPERTIES DURING CONSTRUCTION. ANY PROPERTY (PRIVATE OR PUBLIC) WHICH ARE DAMAGED DURING CONSTRUCTION MUST BE RESTORED TO ORIGINAL CONDITIONS BY THE CONTRACTOR. THE COST OF THE RESTORATION IS CONSIDERED INCIDENTAL, AND SHOULD BE INCLUDED IN THE BID PRICES.
8. THE CONTRACTOR IS RESPONSIBLE FOR FIELD VERIFYING ALL UTILITY INFORMATION SHOWN ON THE PLANS PRIOR TO THE START OF CONSTRUCTION. THE CONTRACTOR SHALL CALL DIGGER'S HOTLINE TO REQUEST FIELD STAKING OF EXISTING UTILITIES AND NOTIFY THE UTILITIES OF THE PROJECT COMPONENTS.
9. CONTRACTOR SHALL ENSURE ALL MUD AND DEBRIS IS NOT DEPOSITED ONTO THE ADJACENT ROADWAYS PER THE REQUIREMENT OF THE AGENCY HAVING JURISDICTION ON THE ROADWAYS.
10. SUBMITTALS:
 - A. SHOP DRAWINGS AND/OR MANUFACTURER'S PRODUCT DATA SUBMITTALS ARE REQUIRED ONLY IF THE PRODUCT OR METHOD OF CONSTRUCTION:
 - a. IS DIFFERENT FROM THAT SPECIFIED OR
 - b. IS PART OF THE WORK THAT WILL BE DEDICATED AS A PUBLIC UTILITY OR ROADWAY AT THE END OF THE PROJECT OR
 - c. IF REQUIRED BY THE MUNICIPAL ENGINEER.
 - B. FOR UTILITY OR ROAD WORK THAT WILL BE DEDICATED TO A MUNICIPALITY, CONTRACTOR MUST MAKE SUBMITTALS TO THE MUNICIPALITY AS WELL AS ENGINEER.

UTILITIES

1. THE PROPOSED IMPROVEMENTS SHALL BE CONSTRUCTED ACCORDING TO THE LOCAL ORDINANCE SPECIFICATIONS, WISCONSIN ADMINISTRATIVE CODE, SECTION SPS 382-384, LATEST EDITION, THE STANDARD SPECIFICATIONS FOR SEWER AND WATER CONSTRUCTION IN WISCONSIN, LATEST EDITION, AND THE LOCAL ORDINANCES AND SPECIFICATIONS.
2. PROPOSED STORM SEWER SHOWN ON THIS PLAN SHALL TERMINATE AT A POINT FIVE (5) FEET FROM THE EXTERIOR BUILDING WALL.
3. MATERIALS FOR PROPOSED STORM SEWER SHALL BE AS FOLLOWS:

STORM SEWER PIPE 24" OR LESS SHALL BE EITHER:

 - A. HIGH DENSITY POLYETHYLENE (HDPE) WITH A SMOOTH INTERIOR AND ANNULAR EXTERIOR CORRUGATIONS, SUCH AS ADS N-12 WT. HDPE PIPE SHALL CONFORM TO ASTM F2648 AND F2306. JOINTS SHALL BE WATER TIGHT CONFORMING TO ASTM D3212 WITH ELASTOMERIC SEALS (GASKETS) CONFORMING TO ASTM F477.
 - B. POLYVINYL CHLORIDE (PVC) PIPE, ASTM D-3034, SDR 35, WITH ELASTOMERIC PUSH-ON JOINTS CONFORMING TO ASTM D-3212.
 - C. REINFORCED CONCRETE, ASTM C-76, CLASS III OR GREATER, WITH ELASTOMERIC SEALS CONFORMING TO ASTM C-443.

TRENCH SECTION SHALL BE CLASS "C" FOR CONCRETE AND CLASS "B" FOR ALL OTHER MATERIALS.
4. EXTREME CAUTION MUST BE FOLLOWED REGARDING THE COMPACTION OF ALL UTILITY TRENCHES. MECHANICALLY COMPACTED GRANULAR BACKFILL IS REQUIRED UNDER & WITHIN 5 FEET OF ALL PAVEMENT INCLUDING SIDEWALKS. FLOODING OF BACKFILL MATERIAL IS NOT ALLOWED. THE COST OF THIS GRANULAR MATERIAL AND ITS COMPACTION IS CONSIDERED INCIDENTAL AND SHALL BE INCLUDED IN THE COST OF THE PROPOSED UTILITY.
5. UPON COMPLETION OF FINAL PAVING OPERATIONS, THE UTILITY CONTRACTOR SHALL ADJUST ALL MANHOLE AND INLET RIMS AND VALVE BOXES TO FINISHED GRADE.
6. THE CONTRACTOR IS RESPONSIBLE FOR PROVIDING THE OWNER WITH A SET OF MARKED-UP PRINTS SHOWING ALL CHANGES MADE DURING THE CONSTRUCTION PROCESS. ANY CHANGES TO THE DRAWINGS OR ADDITIONAL ITEMS MUST BE REPORTED TO THE OWNER.
7. TRACER WIRE SHALL BE INSTALLED ON ALL BURIED NON-METALLIC SANITARY SEWERS, PRIVATE SANITARY INTERCEPTOR MAIN SEWERS, STORM BUILDING SEWERS, AND PRIVATE STORM INTERCEPTOR MAIN SEWERS THAT DISCHARGE TO MUNICIPAL MAINS. TRACER WIRE SHALL ALSO BE INSTALLED ON ALL BURIED NON-METALLIC WATER SERVICES AND PRIVATE WATER MAINS CONNECTED TO MUNICIPAL SUPPLY SYSTEMS. TRACER WIRE SHALL BE IN ACCORDANCE WITH SPS 382.30(1)(h) AND SPS 382.36(7)(d)10.b.

PAVING

1. THE PROPOSED IMPROVEMENTS SHALL BE CONSTRUCTED ACCORDING TO THE WISCONSIN D.O.T. STANDARD SPECIFICATIONS FOR HIGHWAY AND STRUCTURE CONSTRUCTION, LATEST EDITION, AND THE LOCAL ORDINANCES AND SPECIFICATIONS, AND THE GEOTECHNICAL REPORT.
2. PAVING SHALL CONSIST OF FINE GRADING PAVEMENT AREAS, INSTALLATION OF CRUSHED STONE BASE, CONCRETE AND/OR BITUMINOUS PAVEMENT, PAVEMENT MARKING, AND CLEANUP. ALL MATERIALS SHALL BE PROVIDED BY THE CONTRACTOR.
3. AGGREGATES USED IN THE HMA SHALL BE IN ACCORDANCE WITH SUBSECTION 460.2.2.3 OF THE STANDARD SPECIFICATIONS.
4. CONCRETE CONSTRUCTION SHALL BE IN ACCORDANCE WITH THE FOLLOWING SECTIONS OF THE STANDARD SPECIFICATIONS: SECTION 415 FOR CONCRETE PAVEMENT AND SECTION 602 FOR CONCRETE SIDEWALKS.
5. PAVEMENT MARKINGS SHALL BE PAINT IN ACCORDANCE WITH SECTION 646 OF THE STANDARD SPECIFICATIONS. THE FOLLOWING ITEMS SHALL BE PAINTED WITH COLORS NOTED BELOW:

PARKING STALLS: WHITE
PEDESTRIAN CROSSWALKS: WHITE
ADA SYMBOLS: BLUE OR PER LOCAL CODE
EXTERIOR SIDEWALK CURBED, LIGHTPOLE BASES, AND GUARD POSTS: YELLOW

REV.	DATE
6	
5	
4	
3	
2	
1	
0	02/23/24

Endpoint Solutions

6871 S. LOVERS LANE
FRANKLIN, WI 53132
PHONE: (414) 427-1200

GENERAL CONSTRUCTION NOTES

TRINITY LUTHERAN CHURCH - SITE IMPROVEMENTS
1052 WHITE ROCK AVENUE
WAUKESHA, WI 53186

DRAWN BY: JAH/NWD DATE:
CHECKED BY: NWD 02/23/2024
APPROVED BY: JAH

PROJECT NO.
525-025-001

SHEET NO.
C7

