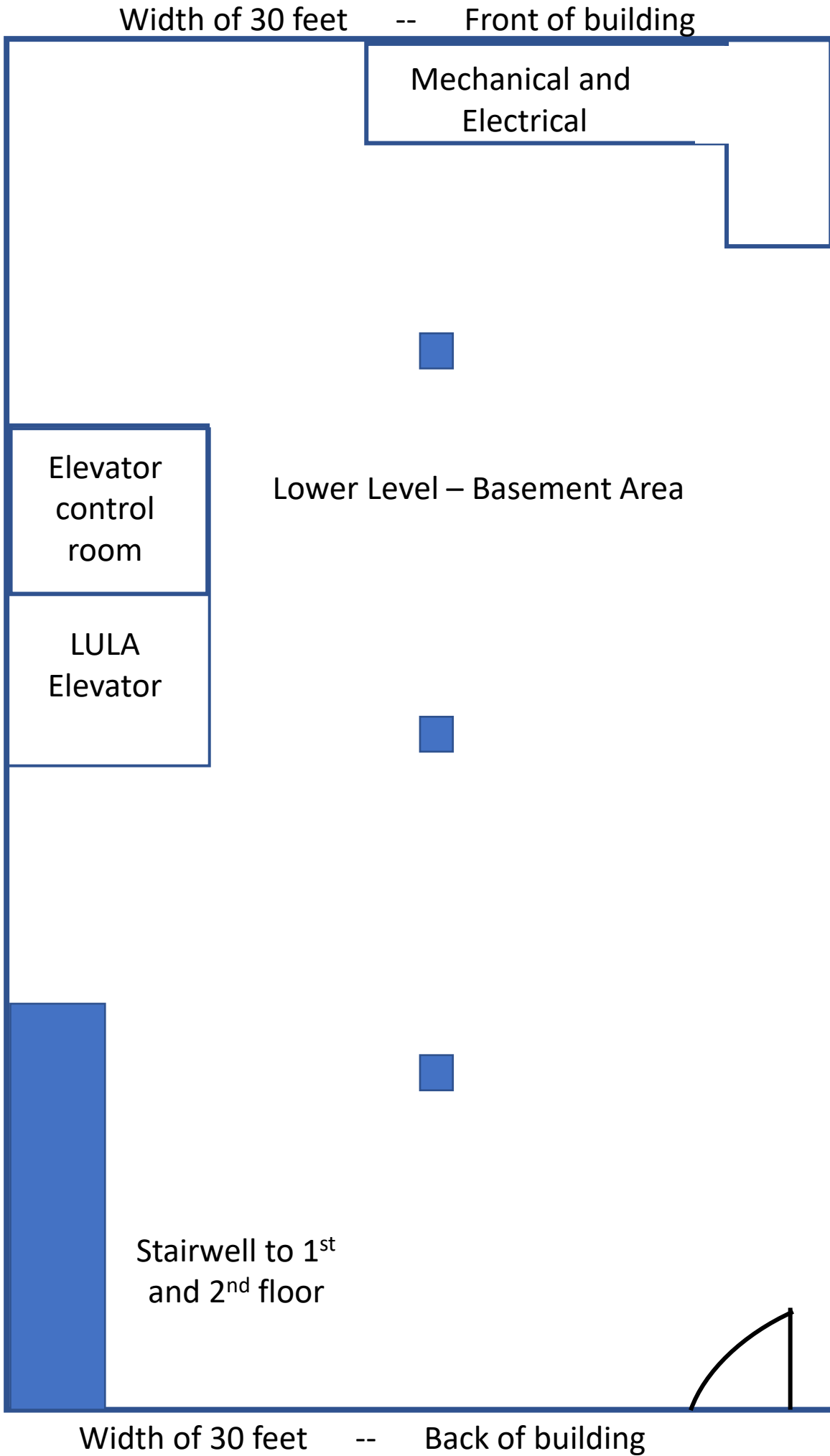


An official floor plan for the building was not available from the Seller, potential buyer created the following.

However the seller provided the following information:
Original Waukesha Engine HQs, this iconic, historic bldg has been restored w/nearly \$400,000 in improvements: landscaping, plumbing, electrical, elevator, fire/alarm, doors, windows, walls, carpet, roof (early 2000's) and furnaces (2012).



Width of 30 feet

Front of building

L
e
n
g
t
h

f
r
o
n
t

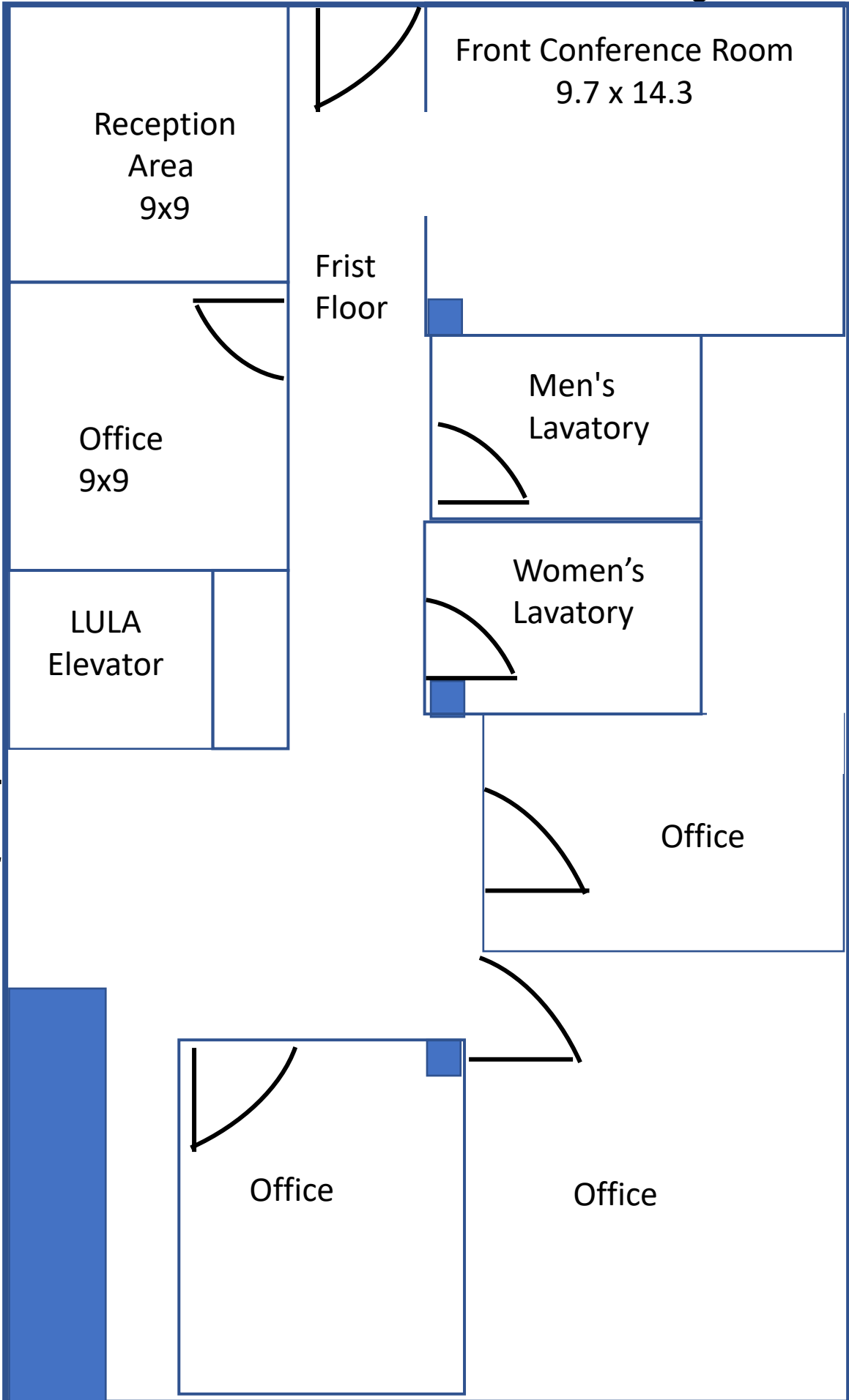
t
o

B
a
c
k

o
f

4
9

f
e
e
t



Width of 30 feet

Back of building

Width of 30 feet

--

Front of building

L
e
n
g
t
h

f
r
o
n
t

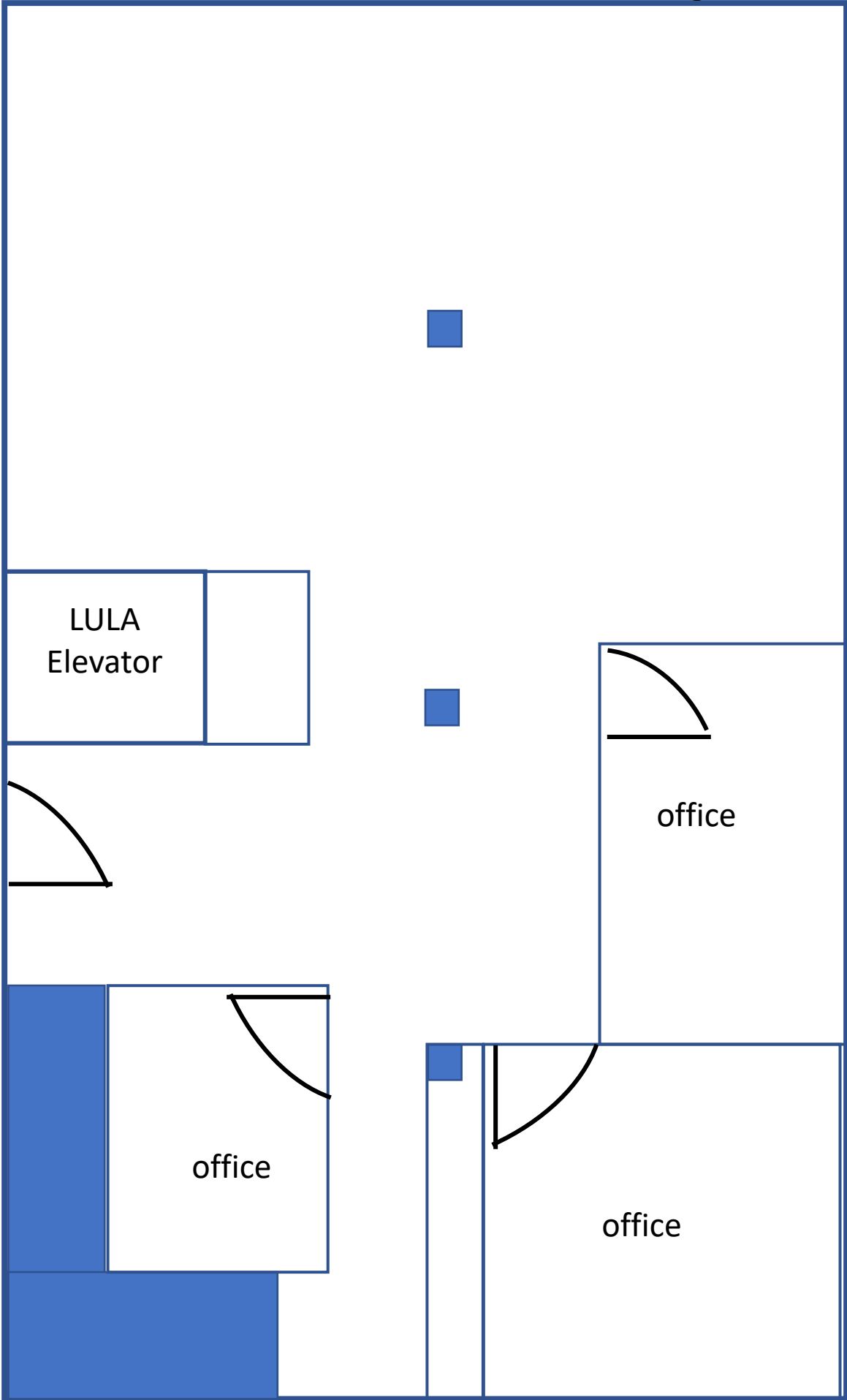
t
o

B
a
c
k

o
f

4
9

f
e
e
t



Fire Exit

Width of 30 feet

--

Back of building