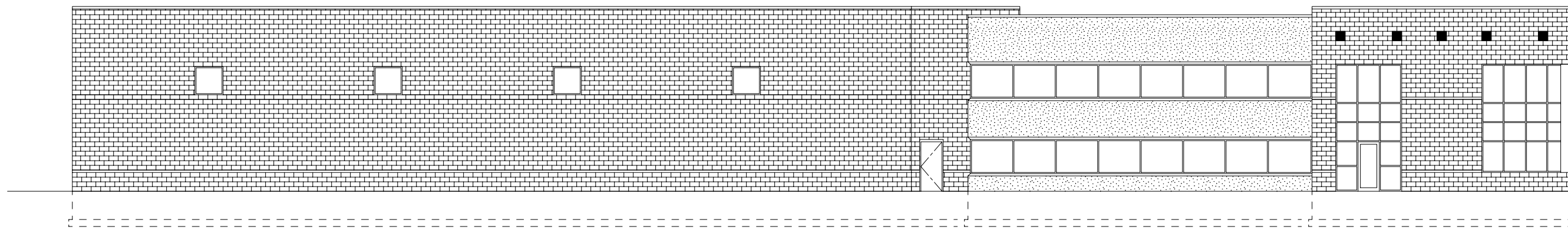


REVISIONS

STAMP

PAUL MEIER INC.
456 SOUTH 76TH STREET
WEST ALLIS, WISCONSIN 53214
PHONE : (414) 255-7458

BREAK LINE
FOR PARTIAL
ELEVATION



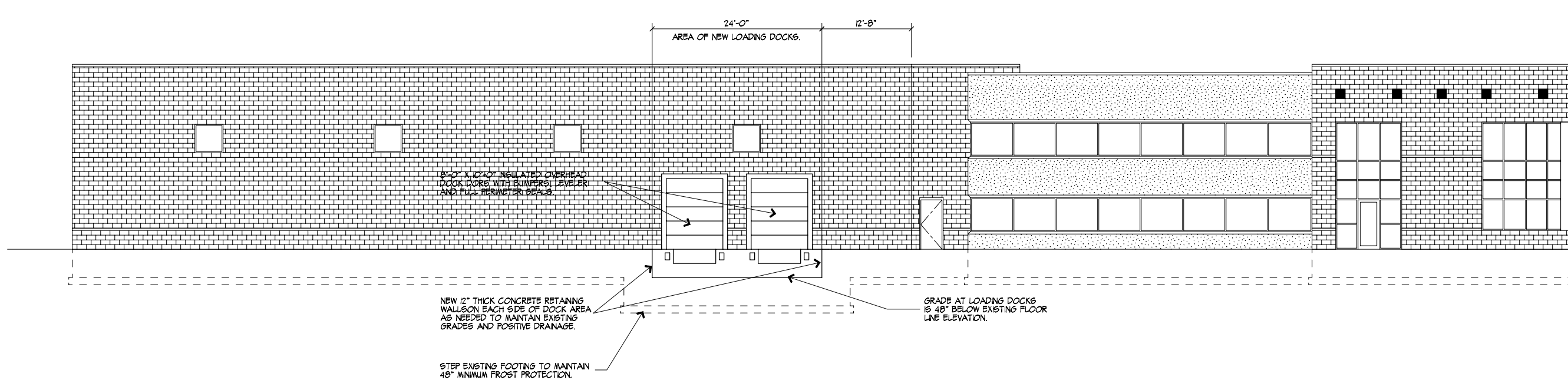
EXISTING PARTIAL WEST ELEVATION

1/8" = 1'-0" (1/16" = 1'-0" FOR 11" X 17" PAPER SIZE)

PROPOSED LOADING DOCKS FOR :

CORPORATE DESIGN INTERIORS
1711 PARAMOUNT COURT
WAUKEGHA, WI.

BREAK LINE
FOR PARTIAL
ELEVATION



PROPOSED PARTIAL WEST ELEVATION

1/8" = 1'-0" (1/16" = 1'-0" FOR 11" X 17" PAPER SIZE)

DRAWN BY
P.M.M. - P.E.

DATE
FEBRUARY 9, 2015

SCALE
AS NOTED

JOB NUMBER
2015-10

SHEET



OF 3