

2x6 STUD WALL W/ BATT. INSUL., POLY V.B. & 1/2" DRYWALL ATOP HALF-HEIGHT CONC. WALL W/ BATT. INSUL., POLY V.B., 2x4 FLOORING, & 1/2" DRYWALL - PROVIDE WOOD LEDGE ATOP FLOORING

WINDOWS NOTE:
HEAD HEIGHT OF WINDOW UNITS TO BE 7'-5 1/2" ABOVE FLOOR LINE

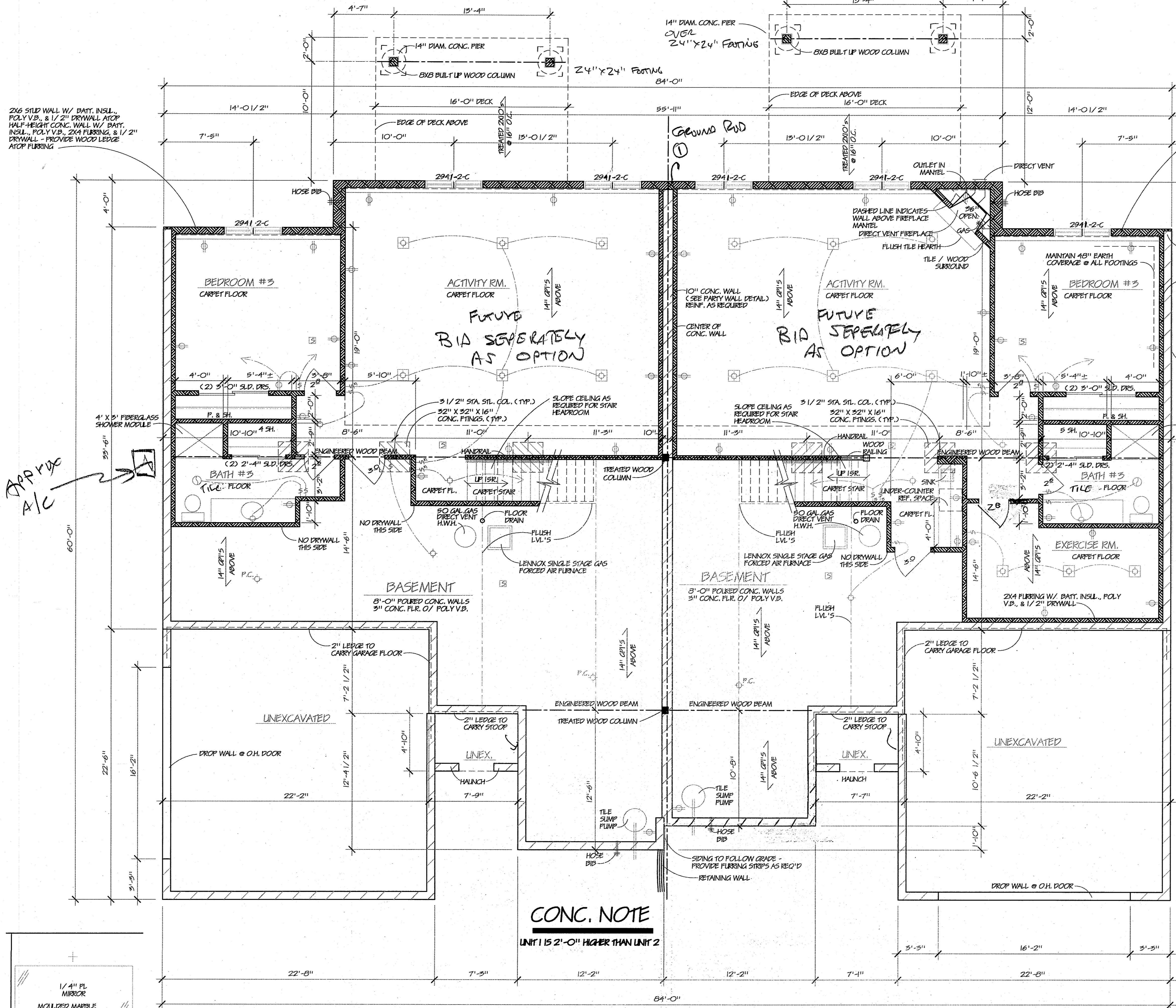
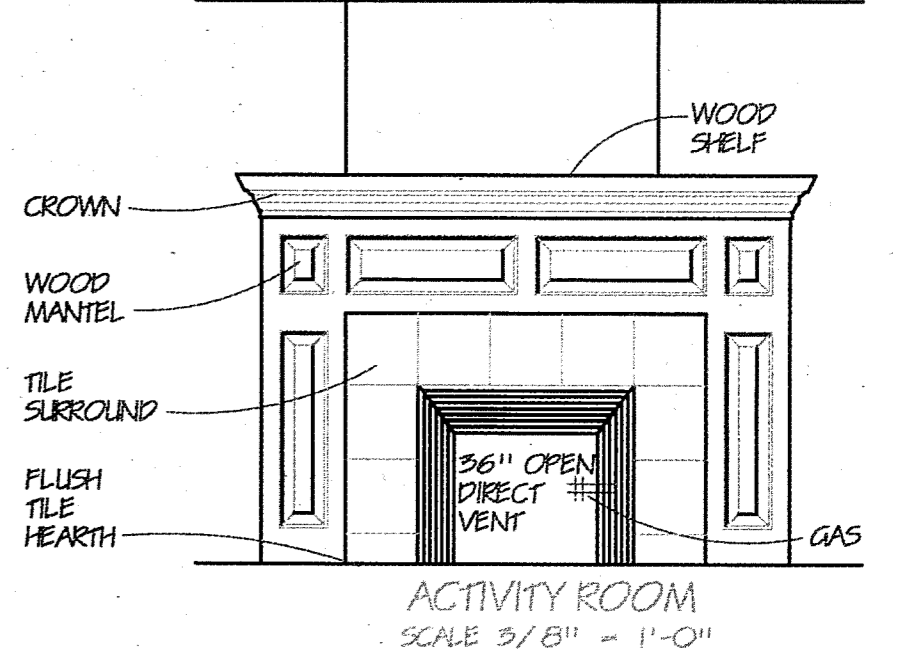
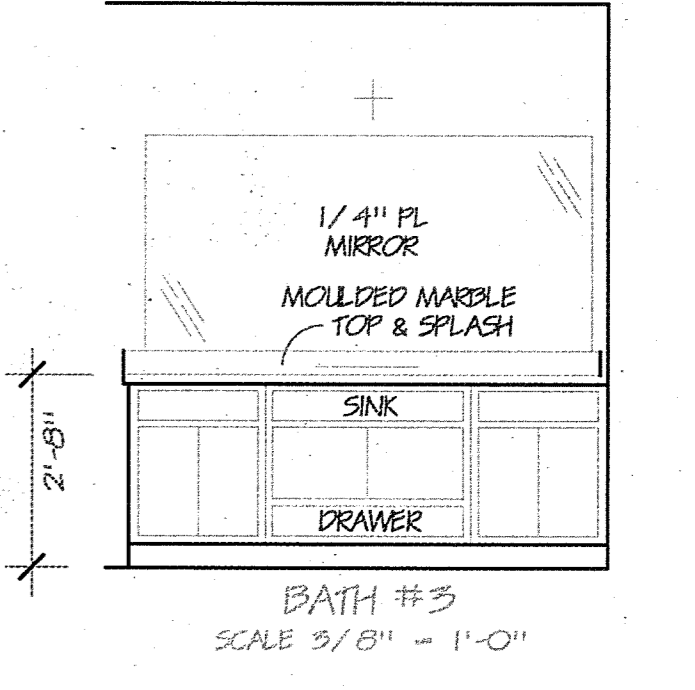
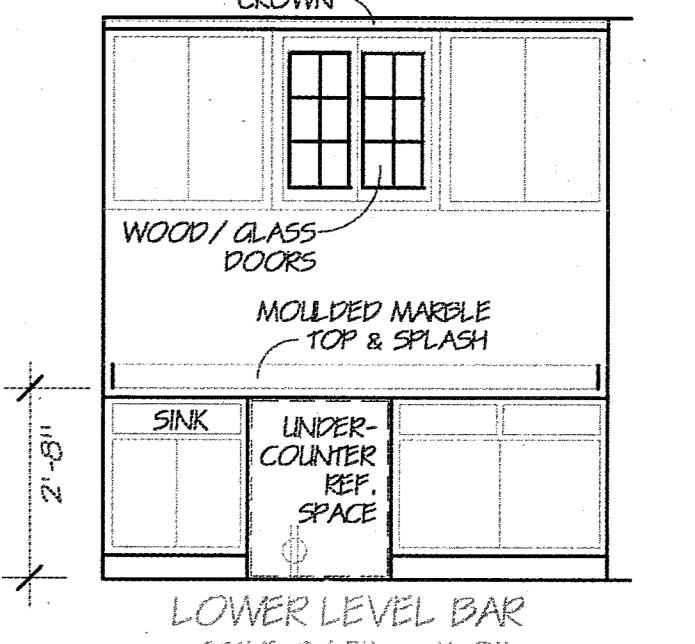
NOTES:
BASEMENT MECHANICALS LOCATION BY CONTRACTOR
MAINTAIN 48" EARTH COVERAGE @ ALL FOOTINGS

CONC. FLOOR NOTE:
FLOOR JOINTS TO BE SAWN, NOT TROWELED

G.P.I. MANUF. NOTE:
PROVIDE SPACING AND SERIES AS REQUIRED FOR SPAN & LOAD CONDITIONS

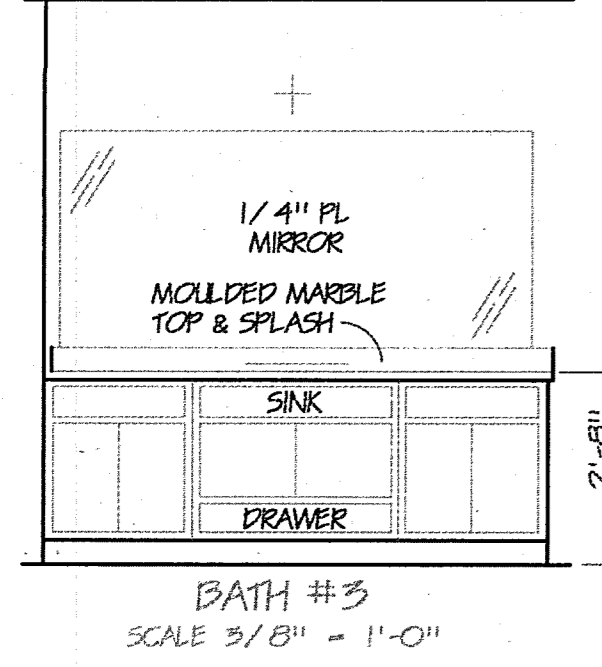
ELECTRICAL NOTES:

- ⊙ - SCONE
- ⊙ - EXHAUST FAN
- ⊙ - SMOKE DETECTOR (HARDWIRED)
- ⊙ - Ground Rod



CONC. NOTE
UNIT 1 IS 2'-0" HIGHER THAN UNIT 2

CONC. FLOOR NOTE:
ALL CONCRETE FLOOR JOINTS SHALL BE SAW CUT INSTEAD OF TROWELED

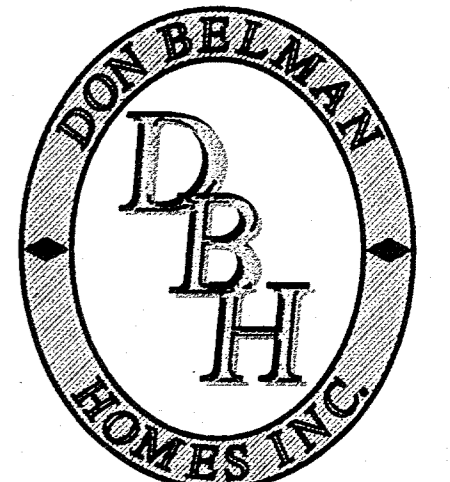


UNIT 1
960 S.F. - STANDARD LIVING SPACE

LOWER LEVEL / FOUNDATION PLAN
SCALE 1/4" = 1' - 0"

UNIT 2
1,152 S.F. - DELUXE LIVING SPACE

© COPYRIGHT 2007
4-27-14-28
S-1014
3 OF 5



1407 E. SUNSET DR., SUITE 200
WALKERSHA, WISCONSIN 53189
PHONE: (262) - 544 - 4648
FAX: (262) - 549 - 8950
WWW.DONBELMANHOMES.COM