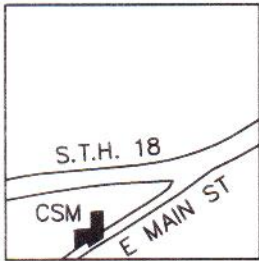


# CERTIFIED SURVEY MAP NO.

LANDS IN THE SOUTHWEST 1/4 OF THE NORTHEAST 1/4 OF SECTION 36, TOWNSHIP 7 NORTH, RANGE 19 EAST IN THE CITY OF WAUKESHA, WAUKESHA COUNTY, WISCONSIN.

## VICINITY MAP

1" = 2000'



DAVIDSON RD  
NE 1/4 SEC.  
36-7-19

PREPARED FOR:  
GRIFFIN FORD, INC  
1940 E MAIN ST  
WAUKESHA, WI



**CAPITOL SURVEY ENTERPRISES**  
237 SOUTH CURTIS ROAD  
MILWAUKEE, WI 53214  
PH: (414) 727-7510  
FAX: (414) 727-7518  
WWW.CAPITOLSURVEY.COM

NOTE:  
1. THE 3 AND 5 FOOT TEMPORARY SLOPE EASEMENTS SHOWN ALONG THE STREET FRONTAGE OF E. MAIN ST. SHALL BE IN EFFECT UNTIL CONCRETE SIDEWALKS ARE INSTALLED. ANY PERMANENT IMPROVEMENTS WITHIN THESE EASEMENTS (INCLUDING CURBS, LIGHTING AND CONDUIT, LANDSCAPING, IRRIGATION EQUIPMENT, ETC.) MUST BE APPROVED BY THE CITY ENGINEERING DEPARTMENT PRIOR TO ITS INSTALLATION. THE CITY MUST ALSO APPROVE THE CURB ELEVATION (GRADE) OF THE PROPOSED PARKING LOT TO BE BUILT 3 FEET FROM THE RIGHT OF WAY LINE PRIOR TO ITS CONSTRUCTION.

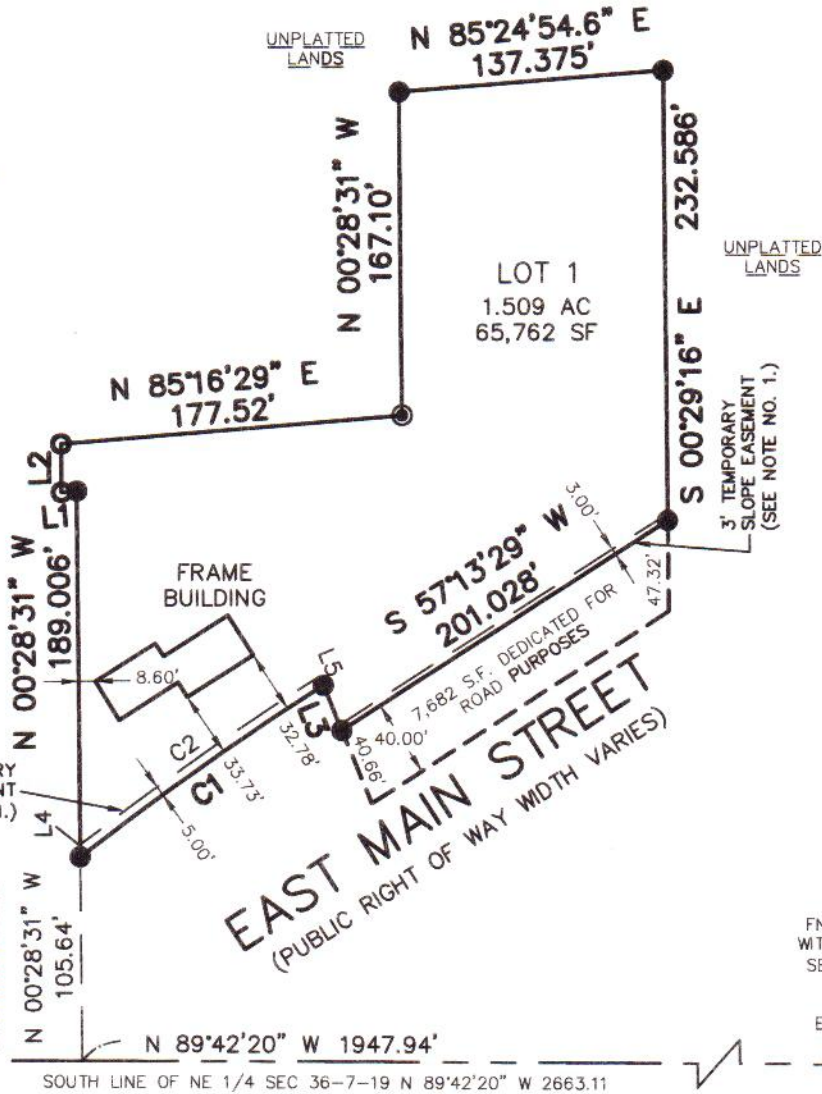
FND CONC. MON  
WITH BRASS CAP  
NE COR NE 1/4  
SEC 36-7-19  
N: 381,320.89  
E: 2,485,015.70

ALL BEARINGS REFER TO THE EAST LINE OF THE NORTHEAST 1/4 OF SECTION 36-7-19, WHICH HAS A WISCONSIN STATE PLANE COORDINATE SYSTEM, SOUTH ZONE (N.A.D. 27) BEARING OF N 00°30'57" W.

- INDICATES 1 INCH DIA. IRON PIPE, 18 INCHES IN LENGTH, WEIGHING 1.68 LBS PER LINEAL FOOT, SET.
- ⊙ INDICATES 1 INCH DIA. IRON ROD, FOUND.
- INDICATES 1 INCH DIA. IRON PIPE, FOUND.

UNPLATTED LANDS

5' TEMPORARY SLOPE EASEMENT (SEE NOTE NO. 1.)



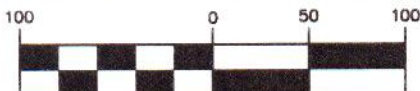
FND CONC. MON  
WITH BRASS CAP  
SE COR NE 1/4  
SEC 36-7-19  
N: 378,678.01  
E: 2,485,039.50

EAST LINE OF NE 1/4 SEC 36-7-19 N 00°30'57" W 2643.30

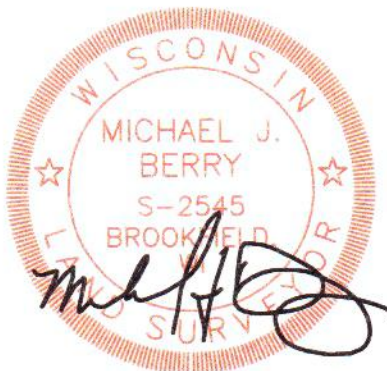
LINE	LENGTH	BEARING
L1	7.934	S85°16'29"W
L2	25.00	N00°28'31"W
L3	25.218	N22°25'31"W
L4	6.261	N00°28'31"W
L5	5.074	S22°25'31"E

CURVE	LENGTH	RADIUS	CH BEARING	CH	DELTA
C1	153.813	1660.00	S55°06'32.7"W	153.758	5°18'32"
C2	151.366	1665.00	N55°11'20"E	151.314	5°12'32"

## GRAPHIC SCALE



1 inch = 100 ft.



REVISED 8-29-2012  
REVISED 10-12-2012  
REVISED 8-20-2014