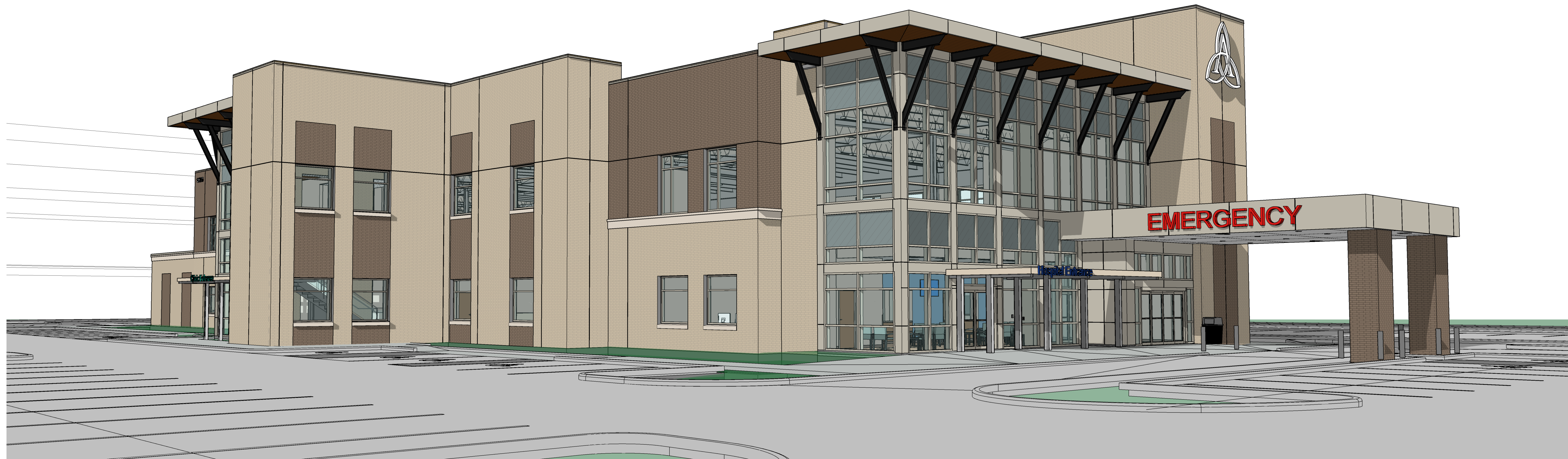


Ascension Waukesha - Hospital

2304 W. St. Paul Avenue
Waukesha, WI 53188



**Philo
Wilke**

Partnership

11275 S. Sam Houston Parkway W.
Suite 200 | Houston, Texas 77031
832.554.1130 | philowilke.com

Civil Engineer & Landscape Architects
JSD Professional Services, Inc
W238 N1610 Busee Road, Suite 100
Waukesha, WI 53188

Structural Engineers
Dally + Associates
9800 Richmond Avenue, Suite 460
Houston, TX 77042

MEP Engineers
Telios PC
101 Parklane Boulevard, Suite 101
Sugar Land, Texas 77478

Interim Review Only

Not for regulatory approval, permit or construction.
By: Luke F. Christen
46701-5
Date: 05/14/2020

Civil Engineer & Landscape Architects
JSD Professional Services, Inc
W238 N1610 Busee Road, Suite 100
Waukesha, WI 53188

Structural Engineers
Daily + Associates
9800 Richmond Avenue, Suite 460
Houston, TX 77042

MEP Engineers
Tellos PC
101 Parklane Boulevard, Suite 101
Sugar Land, Texas 77478

No.	Date	Description
1	03/05/2020	Pre-Application Meeting
2	04/23/2020	Design Development
3	05/14/2020	Final Site and Arch Review

Ascension Waukesha - Hospital

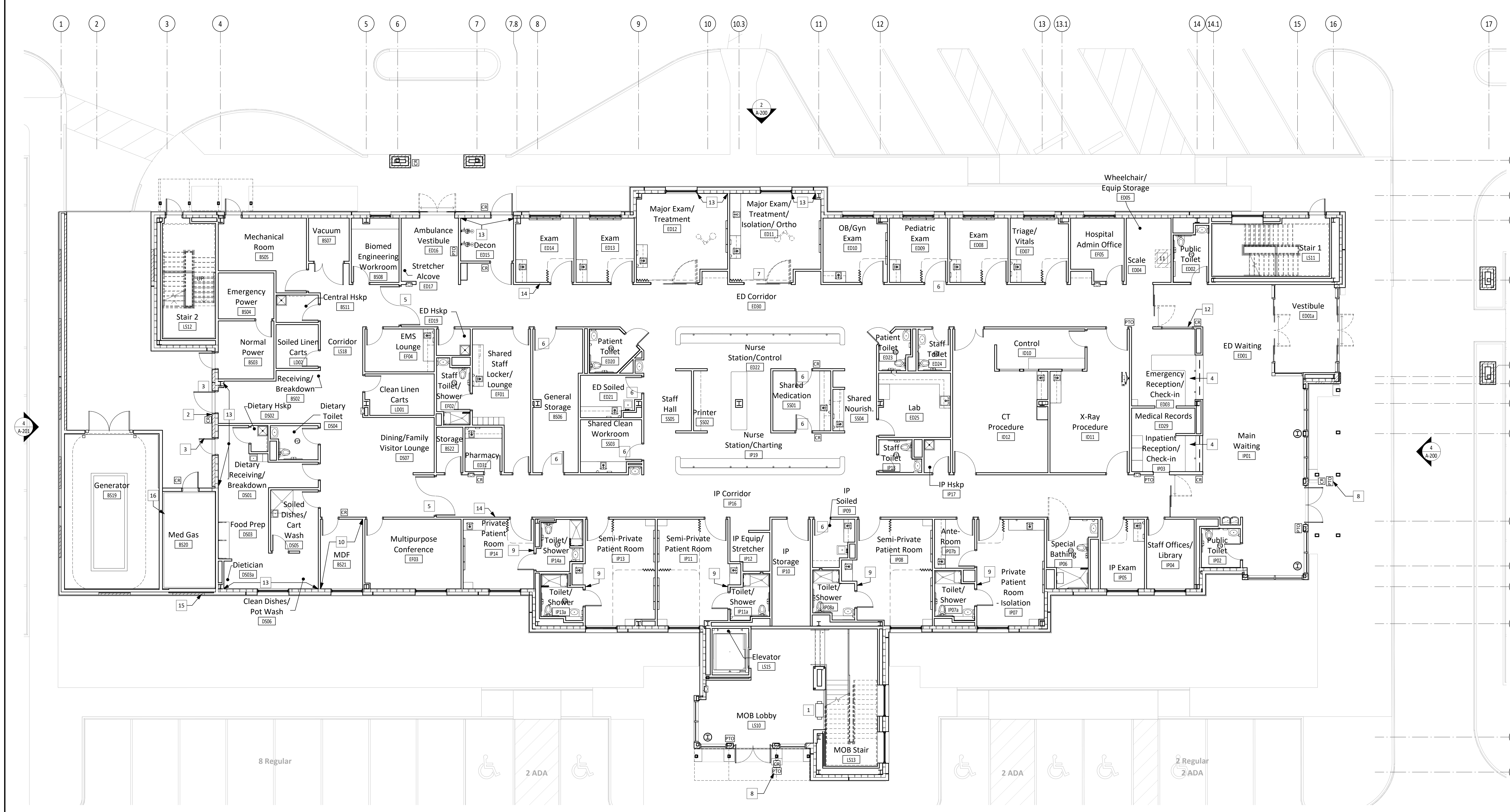
2304 W. St. Paul Avenue
Waukesha, WI 53188

First Level Floor Plan

Copyright (C) 2020 by PhiloWilke Partnership. All rights reserved.
This document and the information herein is the property of PhiloWilke Partnership. No part hereof shall be copied, digitized, distributed, disclosed or used for any intent whatsoever except as expressly authorized by PhiloWilke Partnership. Any Person, firm, or corporation receiving this document, however obtained, shall be deemed to have agreed to the foregoing restrictions and that this document will be held in trust and confidence subject only to the private use expressly authorized by PhiloWilke Partnership.

Print Date / Time: 5/13/2020 3:59:55 PM

P&W Commission Number: 218-097R Sheet Number: A-111



- Keyed Notes - Floor Plan**
- 1 MOB mailboxes, see details 1 and 3 A-523.
 - 2 Door bell (to ring at Nurse Stations).
 - 3 Door peephole at 5'-0" AFF.
 - 4 Below counter at each workstation noted, provide push button to remotely open automatic doors to corridor, chest pain button and panic button. Coordinate exact locations with Owner.
 - 5 Doors on magnetic hold-opens.
 - 6 Overhead door stop.
 - 7 Sliding door to have self closer.
 - 8 Pedestal with card reader to align with canopy column.
 - 9 Recessed night light fixture at 1'-6" AFF, see Light Fixture Schedule.
 - 10 Fire-treated plywood from 6" to 8'-6" on all walls.
 - 11 Depressed slab for recessed scale equipment, 40"x36"x3" deep, see Structural Foundation Details.
 - 12 M-1 mirror glazing, see Specification 08 80 00.
 - 13 Unfaced batt insulation in wall behind wall protection.
 - 14 Zone valve box, see Med Gas Plan. 66" A.F.F. to top of ZVB.
 - 15 Exterior louver at exhaust fan, see specification and Mechanical Piping Plan.
 - 16 Emergency oxygen supply connection, see detail 2 MG-501.

- General Notes - Floor Plan**
1. All new partitions are type "C25" unless noted otherwise.
 2. All dimensions are to face of gypsum board or face of masonry unless noted otherwise.
 3. See 1 A-520 for Partition Type Schedule.
 4. See 1 A-540 for Door Schedule.
 5. See A-351 and A-352 for Interior Signage Plans. Exterior Signage to be coordinated with Owner's Signage Consultant.
 6. Provide and install grommets as requested by Owner.

Legend - Floor/Demo Plan

— New Partitions

C:\Users\mbarber\Documents\Revit\Files\218-097 Ascension Waukesha (Central)_mthbarber@ttd.edu.rvt

