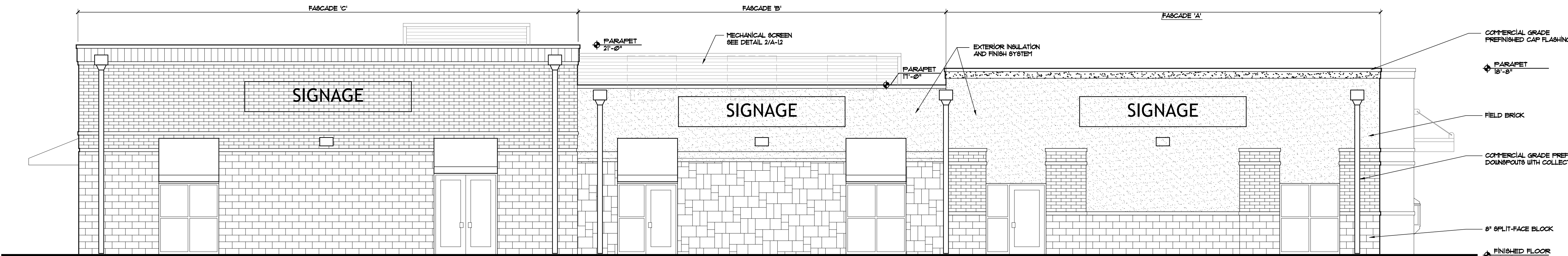
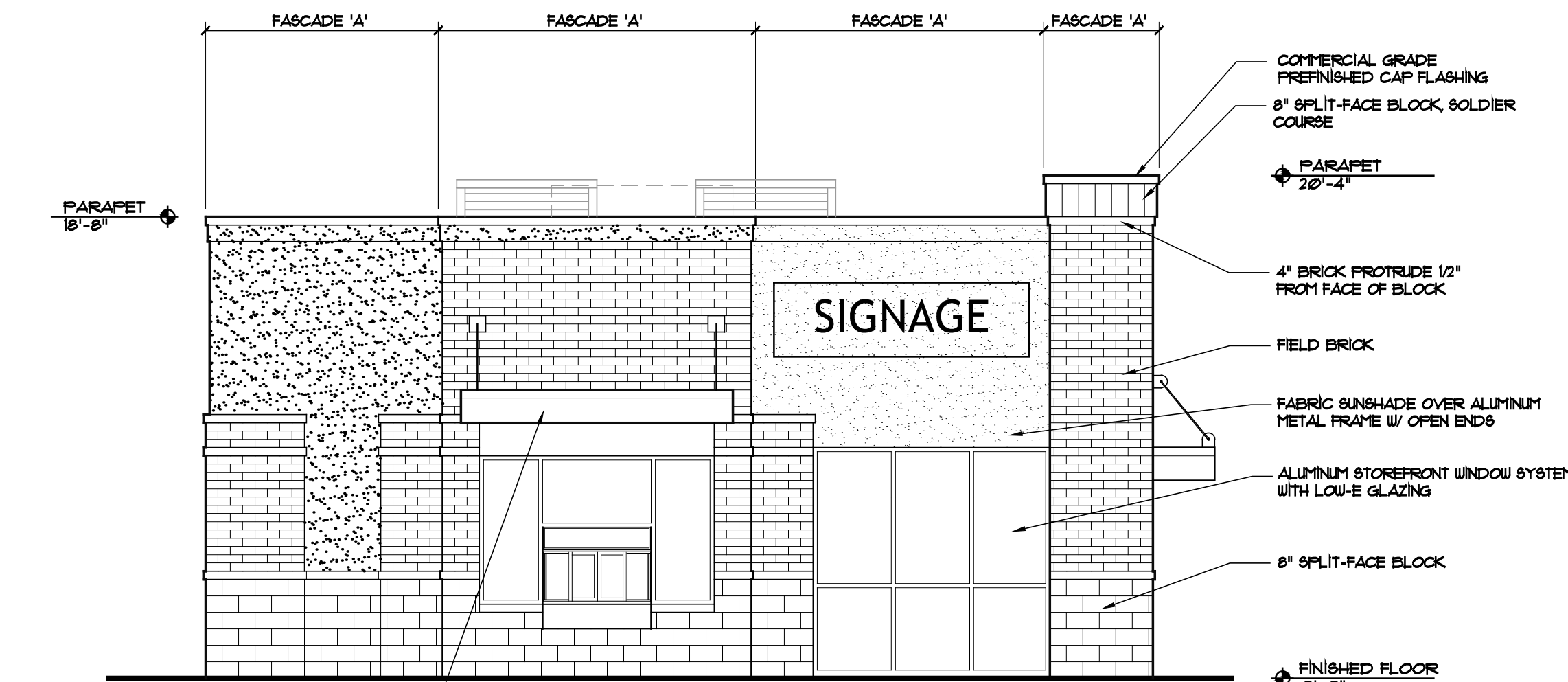


1 SOUTH ELEVATIONS
A-2.1 SCALE: 3/16" = 1' - 0"

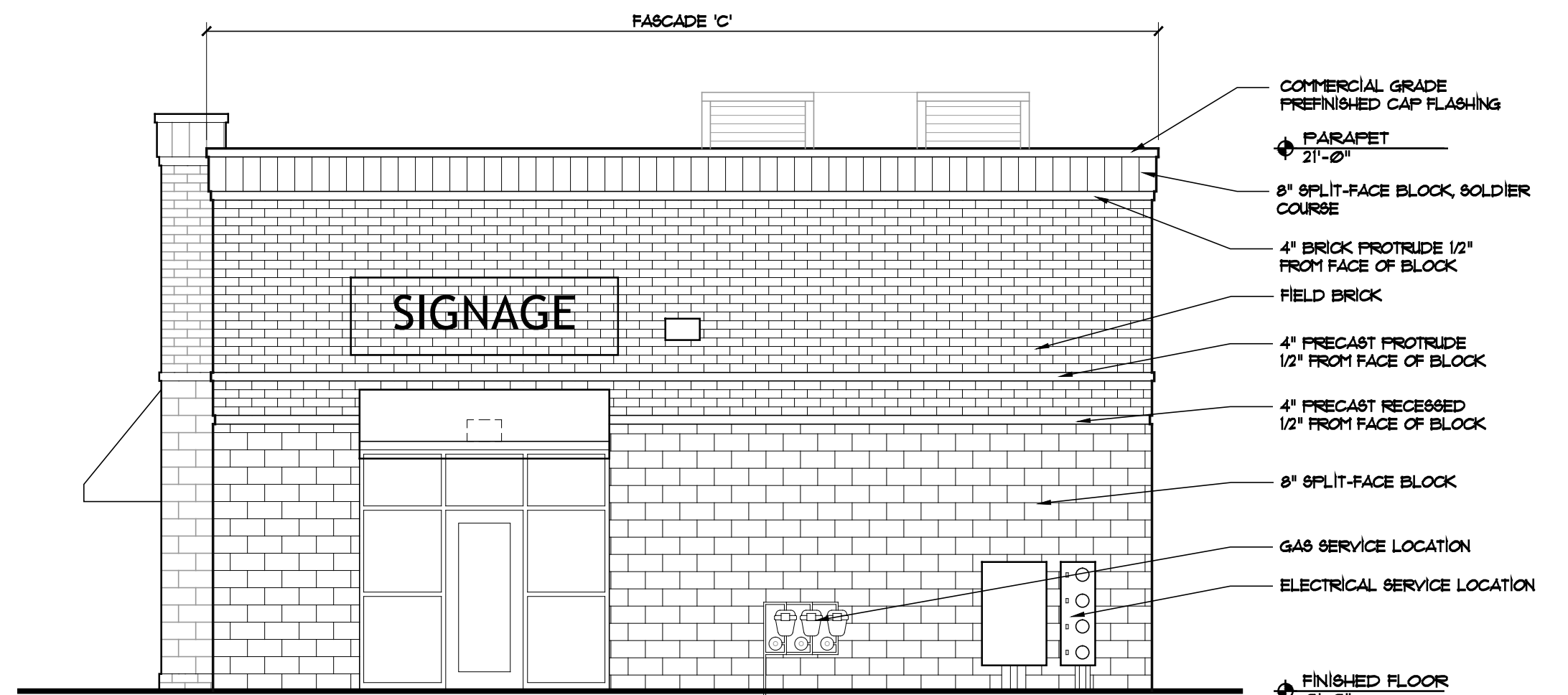


2 NORTH ELEVATIONS
A-2.1 SCALE: 3/16" = 1' - 0"

MATERIAL LIST	
FASCADE 'A'	
COMMERCIAL GRADE PREFINISHED CAP FLASHING:	CMG, "BURGUNDY"
EXTERIOR INSULATION AND FINISH SYSTEM:	COLOR TO MATCH SHERWIN WILLIAMS #W 1048, "INTELLECTUAL MATTERS"
FIELD BRICK	ACHE BRICK, UTILITY SIZE "CONY"
SPLIT-FACE BLOCK WITH 8" RETURNS AT CORNERS	COUNTY MATERIALS CORPORATION "WHITE" 19-006C
FASCADE 'B'	
COMMERCIAL GRADE PREFINISHED CAP FLASHING:	CMG, "TERRA COTTA"
EXTERIOR INSULATION AND FINISH SYSTEM:	COLOR TO MATCH SHERWIN WILLIAMS #W 1048, "INTELLECTUAL MATTERS"
CULTURED STONE:	DUTCH QUALITY STONE WEATHER LEDGE "CYPRESS"
FABRIC SUNSHADE:	SUNBRELLA, "TERRA COTTA"
FASCADE 'C'	
COMMERCIAL GRADE PREFINISHED CAP FLASHING:	CMG, "ROYAL BLUE"
FIELD BRICK	ACHE BRICK, UTILITY SIZE "SLATE GRAY"
4" PRECAST STONE	EDWARDS CAST STONE, "GRAY"
8" SPLIT-FACE BLOCK WITH 8" RETURNS AT CORNERS	COUNTY MATERIALS CORPORATION "WHITE" 19-006C
FABRIC SUNSHADE:	SUNBRELLA, "MARINE BLUE"
ALUMINUM STOREFRONT WINDOW SYSTEM:	KAINEER, "BLACK" ALUMINUM WITH INSULATED LOW "E" GLASS THERMAL BREAKS IN FRAME



3 WEST ELEVATIONS
A-2.1 SCALE: 3/16" = 1' - 0"



4 EAST ELEVATIONS
A-2.1 SCALE: 3/16" = 1' - 0"