

DEVELOPER:
 Fox Lake Land, LLC
 Phone: (414) 333-3226
 Email: gwalsh@wdgllc.com

ENGINEER:
 Mark R. Ellena, PE
 Ellena Engineering Consultants, LLC
 700 Pilgrim Parkway, Suite 100
 Elm Grove, WI 53122
 Phone: 262-719-6183
 Email: mellena@eeceng.com

SURVEYOR:
 John D. Downing, PLS
 Land Tech Surveying, LLC
 PO BOX 15
 Hartland, WI 53029
 Phone: 262-367-7599
 Email: john@landtechwi.com

APPROVAL AGENCY:
 City of Waukesha
 130 Delafield Street
 Waukesha, WI 53188
 Engineering Dept. Phone: 262-524-3600
 Planning Dept. Phone: 262-524-3652

CONSTRUCTION PLANS FOR FOX LAKE VILLAGE ADDITION NO. 2 CITY OF WAUKESHA, WISCONSIN



SHEET TITLE	PLAN SHEET NUMBER	DESCRIPTION
COVER SHEET	C0	
GRADING & DRAINAGE PLAN	C1, C2 & C3	MASTER GRADING PLANS WITH STORM SEWER CALCULATIONS
PAVING & STORM SEWER PLAN	C4 & C5	MOHICAN TRAIL
PAVING & STORM SEWER PLAN	C6	CYNACOUX ROAD
PAVING & STORM SEWER PLAN	C7	MARAMEG TRAIL
SANITARY SEWER PLAN	C8 & C9	MOHICAN TRAIL
SANITARY SEWER PLAN	C10	MARAMEG TRAIL TO EXISTING SANITARY IN PUBLIC EASEMENT
WATERMAIN PLAN	C11 & C12	MOHICAN TRAIL
WATERMAIN PLAN	C13	CYNACOUX ROAD
WATERMAIN PLAN	C14	MARAMEG TRAIL
WATERMAIN PLAN	C15	MARAMEG TRAIL TO BROKEN ARROW COURT (BORING)
EROSION CONTROL & CONSTRUCTION SEQUENCE PLAN	ECP4	FOX LAKE ADDN No.1, No.2 & RELATED SWM IMPROVEMENTS
GRADING & DRAINAGE PLAN	G4	SWM IMPROVEMENTS: SOUTHERN HALF OF POND PR2B
INFILTRATION BASIN	G5	SWM IMPROVEMENTS: INFILTRATION BASIN
INFILTRATION BASIN	G6	SWM IMPROVEMENTS: INFLOW SWALE TO INFILTRATION BASIN

FOX LAKE VILLAGE ADDITION No.1 (10 lots)

FOX LAKE VILLAGE ADDITION No.3 (57 Lots)

12" HDPE WM LOOP FOR FOX LAKE VILLAGE ADDITION No.2

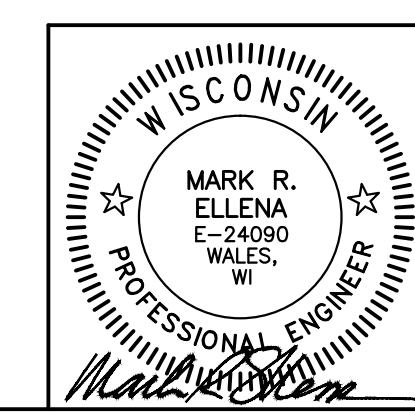
FOX LAKE VILLAGE ADDITION No.2 (41 Lots)

FOX LAKE VILLAGE ADDITION No.4 (42 Lots)

12" HDPE WM LOOP FOR FOX LAKE VILLAGE ADDITION No.3

SCALE: 1" = 200' @ 24 X 36

EEC
 ELLENA ENGINEERING CONSULTANTS, LLC
 SITE CIVIL ENGINEERING & STORMWATER MANAGEMENT
 Ellena Engineering Consultants, LLC, 700 Pilgrim Parkway - Suite 100, Elm Grove, WI 53122
 Phone: 262-719-6183 Fax: 866-457-2584 Email: mellena@eeceng.com



REVISIONS	FOX LAKE VILLAGE ADD No.2 & RELATED SWM IMPROVEMENTS
	Waukesha, Wisconsin
COVER SHEET	
	DATE: MAY 1, 2015
	C0