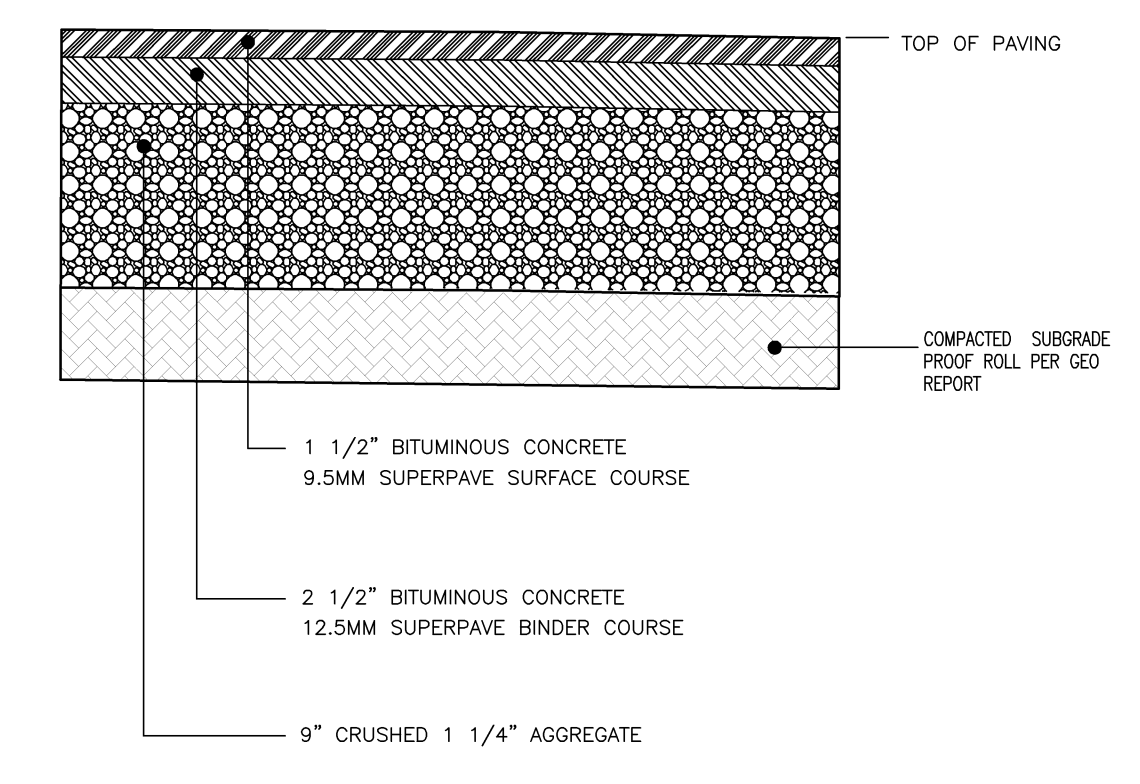
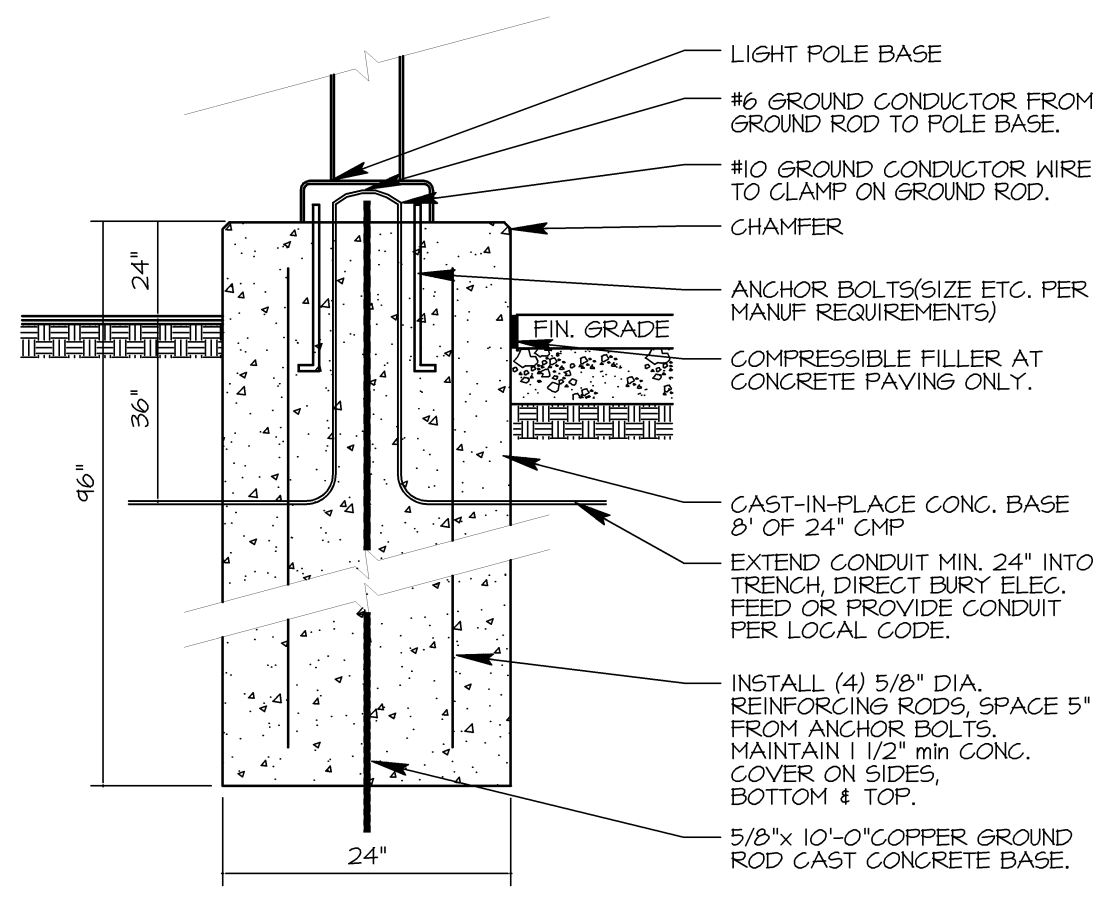
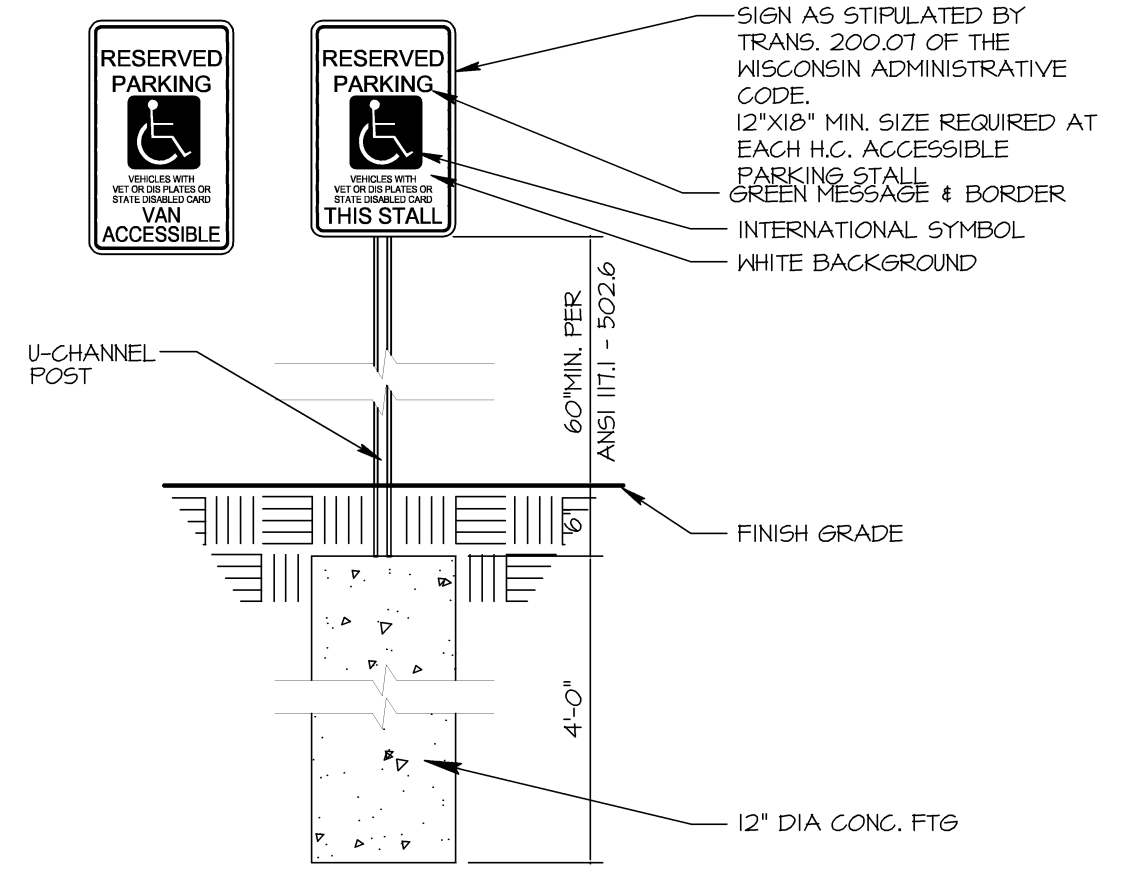


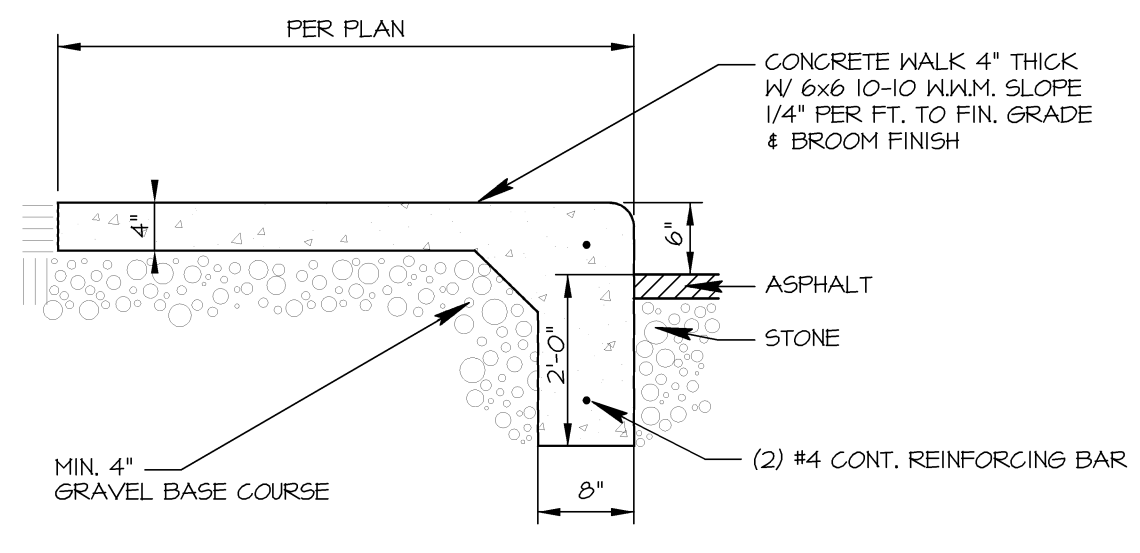
**4 LIGHT POLE BASE**  
N.T.S.



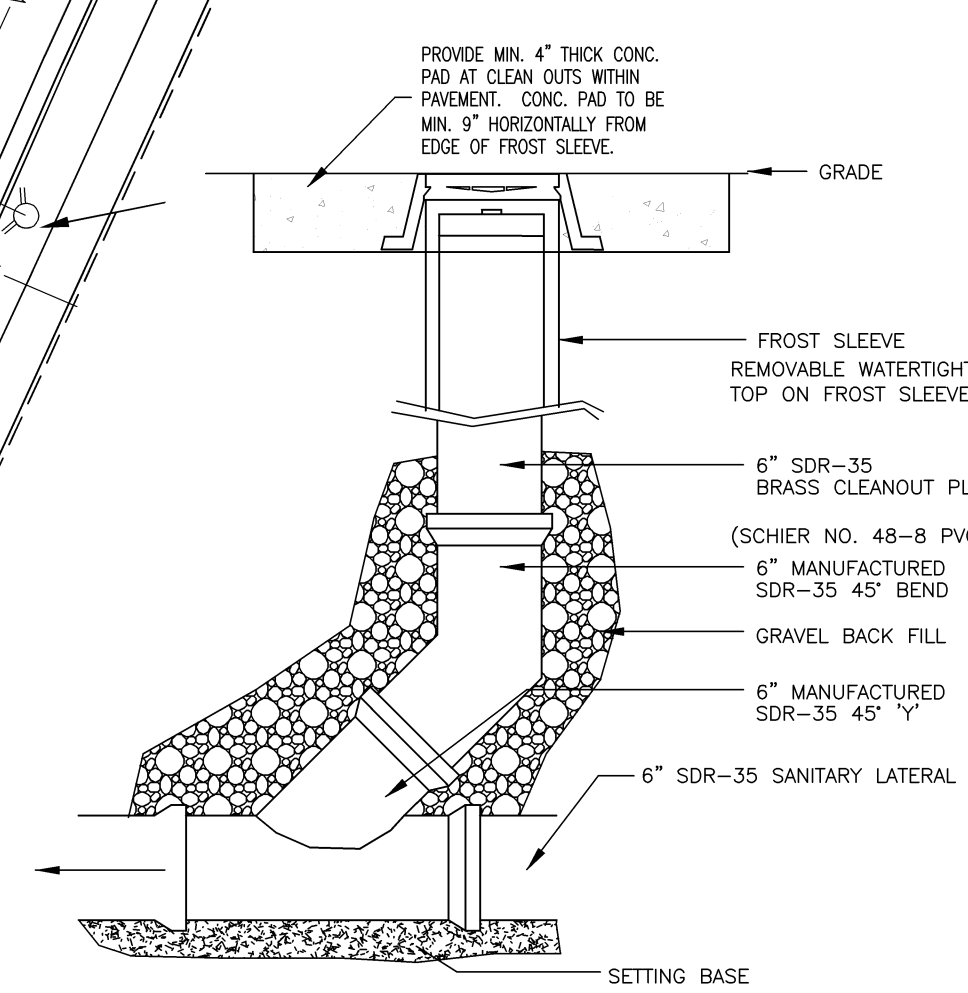
**1 TYPICAL ASPHALT PAVEMENT**  
N.T.S.



**2 HC PARKING SIGN**  
N.T.S.



**3 CONCRETE CURB / WALK**  
N.T.S.



**5 SANITARY CLEANOUT DETAIL**  
N.T.S.

**SITE DATA:**

GROSS LOT AREA	1.32 ACRES
ZONING:	B-5
BUILDING	0.13 ACRES
PARKING AND WALKWAYS	0.79 ACRES
GREEN SPACE	0.40 ACRES (30%)
PARKING STALLS	100 STALLS

**GENERAL NOTES:**

- 1.) ALL SANITARY LATERALS TO MAINTAIN MINIMUM 60" COVER.
- 2.) HYDRANT LEAD TO MAINTAIN 72" COVER.
- 3.) PIPE MATERIALS: Sanitary Lateral = 6" PVC SDR 35 ASTM D1785  
Water Lateral = PVC AWWA C900 ASTM D 2241,

**LEGEND**

	LARGE DECIDUOUS TREE 2 1/2" PLANTING SIZE		SMALL CONIFER 6" PLANTING SIZE
	ORNAMENTAL DECIDUOUS TREE 2" PLANTING SIZE		LARGE DECIDUOUS SHRUB 36" PLANTING SIZE
	LARGE CONIFER 6" PLANTING SIZE		SMALL DECIDUOUS SHRUB 24" PLANTING SIZE
			EVERGREEN SHRUB 18" PLANTING SIZE

**REVISIONS:**

NOTE	DATE
REV #1	08-02-17

**OWNER/SHIP OF DOCUMENTS**  
This document and the ideas and design incorporated herein, as an instrument of professional service, is the sole property of TDI Associates, Inc., and is not to be used or copied for any other project or purpose without the expressed written authorization of TDI Associates, Inc.

**TDI ASSOCIATES, INC.**  
ARCHITECTURE, ENGINEERING, PLANNING

**CITY OF WAUKESHA, WI**  
**PIZZA RANCH #8610 - FLEETWOOD DRIVE**  
**SITE DEVELOPMENT PLAN**

SCALE: 1" = 20'-0"	JOB NO: 15-383.000	DATE: 07-19-17
DESIGNED BY: ROB	DRAWN BY: ROB	CHECKED BY:
APPROVED BY:	ENGINEER	DATE

**SHEET C-2.0**