



## PROPOSAL FOR

# City of Waukesha - Parks, Recreation & Forestry Department Dog Facilities and Park Regulations Study, Recommendations & Concept Designs

September 11, 2023

SNYDER & ASSOCIATES  
5010 Voges Road  
Madison, Wisconsin 53718  
Office: 608.838.0444  
[www.snyder-associates.com](http://www.snyder-associates.com)

# TABLE OF CONTENTS

<b>SECTION</b>	<b>PAGE #</b>
<b>TABLE OF CONTENTS</b>	
<b>COVER LETTER</b>	
<b>EXECUTIVE SUMMARY.....</b>	<b>1-2</b>
<b>DETAILED SCOPE OF SERVICES.....</b>	<b>3</b>
<b>EXPERIENCE AND CAPACITY.....</b>	<b>4-7</b>
<b>REFERENCES.....</b>	<b>8</b>
<b>PERSONNEL.....</b>	<b>9-12</b>
<b>TIMELINE.....</b>	<b>13</b>
<b>SITE VISITS.....</b>	<b>14</b>
<b>FEES.....</b>	<b>SEPARATE PDF</b>



September 11, 2023

Melissa Lipska  
City of Waukesha

Re: Request for Proposal - Dog Facilities and Park Regulations Study, Recommendations and Concept Designs

Dear Ms. Lipska,

Snyder and Associates is pleased to submit our proposal for the Dog Facilities and Park Regulations Study, Recommendations and Concept Designs. The qualifications and experience of the team we have assembled are perfectly suited to meet the needs of this project. Beyond parks for dogs, we see dog parks as way for people to unite, interact, and enjoy open space together as a community. Because of this, and our deep experience in creating public spaces for all, we're excited to submit this proposal for your consideration. Specifically, we're excited because we see this as a way to expand the use and enjoyment of Waukesha's overall public park system. As part of your team's review of this proposal, we would like to point out a few key reasons to select the Snyder team to partner with on this project:

- Our project team is well versed in outdoor recreation and dog park design. We've designed numerous large-scale parks and a variety of dog parks that include ADA accessible trails, enhanced or constructed native landscapes, and amenities such as park shelters, restrooms, lighting, drinking fountains, pet waste systems and signage. Our passion is to see visitors of these completed projects interacting with their dogs and other uses within a landscape that's intended to enhance their knowledge and enjoyment of the natural environment.
- We're planners, landscape architects, and civil engineers. We'll look holistically at Waukesha's park system with a wide spectrum to forecast issues and cease opportunities. We'll design for people and dogs to ensure each park site is appropriate for both users.
- We've worked on a variety of projects where we've been able to work with a wide spectrum of stakeholders and partners. These experiences have allowed us to balance a variety of ideas, budgets, and goals to create comprehensive plans and built work that produce immediate results and allow future growth and development.

We appreciate this opportunity to present our qualifications and express our strong commitment to helping to transform the Waukesha park system into a place people and their dogs can share experiences that better the community. We look forward to your favorable consideration of our team.

Regards,



A handwritten signature in blue ink that reads 'Andy Meessmann'.

**Andy Meessmann, PLA**  
Project Manager  
Cell: 515.249.8371  
ameessmann@snyder-associates.com  
5010 Voges Road  
Madison, Wisconsin 53718  
Office: 608.838.0444



**EXECUTIVE SUMMARY:**

We've read and understand the Request for Proposal and have reviewed the responses to questions for this project. Based on the RFP and the questions, we understand this project to be a comprehensive review and planning effort to create a plan for future dog facilities within the City.

**PROJECT APPROACH**

We've worked on numerous comprehensive park planning efforts across the Midwest and understand the steps needed to deliver a succinct and unique plan. Our project team will work with you to finalize the scope of services, develop a succinct project schedule that complies with any necessary funding, and provide the documentation and figures needed to garner support for approved plans and future action. We'll review current regulations of dog parks as well as examine unique designs and amenities that might expand the use and enjoyment for the user and their dogs. Beyond a 'dog park master plan', our team will design the selected sites to ensure we're providing clear programming needs and costs for successful and practical future build-out.



**INVENTORY, ANALYSIS & ENGAGEMENT**

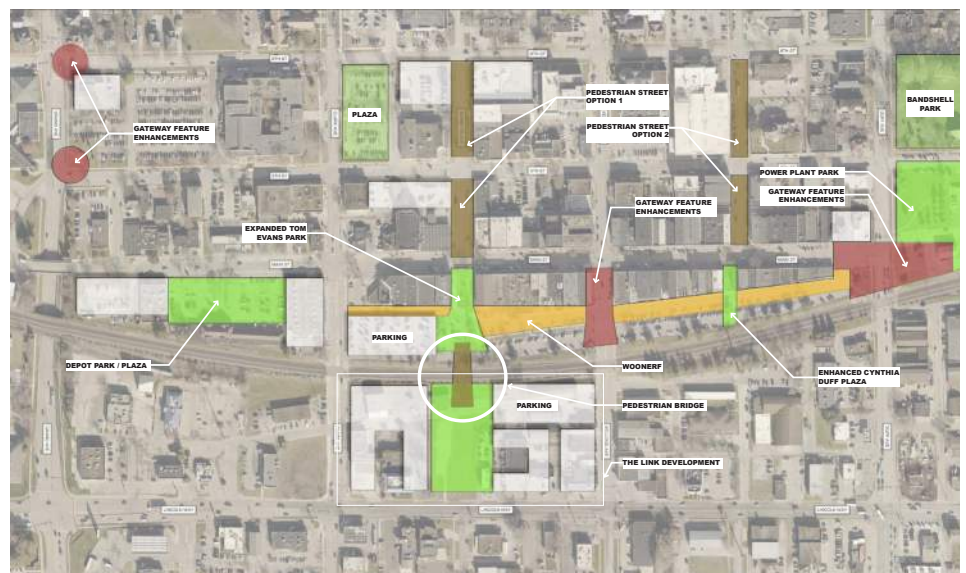
At this stage of the project, we'll investigate existing dog park facilities within the City to determine constraints and opportunities and identify risks to ensure a buildable plan that maintains the vision and is cost sensitive. With the City input, we will develop a matrix to rank potential land purchases or conversion of existing City owned property to pinpoint potential dog park sites. The matrix will help ensure land analysis and costs of development are balanced and logical.

We will also review existing and proposed plans and previous stakeholder engagement documentation that might impact the long-term build-out of dog facilities and other park planning efforts. This will ensure future strategies are cohesive with the City and outlying plans and projects.

Beyond the inventorying and analysis of existing parks, we'll also gauge public feedback and learn from residents. We'll work with you to engage the public in various ways such as public meetings, individual meetings, and surveys. A goal of this outreach will be to build upon the existing stakeholder feedback and direct new feedback regarding the future plan.

**PROGRAMMING**

Before designing, we'll provide a broad brush stroke to define dog park typologies. This will ensure we're providing the programming needs such as separate areas for large and small breeds, agility courses, full off-leash parks, etc. within each proposed and existing park site within the City. We'll include the programming park locations on a programming plan (similar to the graphic on the right) that coincides with a detailed review of existing site information such as slopes, soil conditions, drainage, solar aspect, etc. The final intent of the programming exercise is to provide a comprehensive overview of Waukesha's existing and potential park spaces and how they overlap and interact with the entirety of the park system and the overall City.



*Urban space programming plan for downtown Ames, Iowa.*

**MASTER PLAN**

The master plan will refine the programming needs and feedback into a consolidated plan that includes costs, phasing and final dog facility type. This information will be presented to the public for review and feedback.

**PRELIMINARY DESIGN AND FINAL COMPREHENSIVE PLAN**

Building upon the previous efforts, our team will develop preliminary designs for the selected sites. The plans will be conceptual in nature, but provide enough detailed information to ensure costs, maintenance and phasing are all practical. The culmination of the efforts of the entire project will be assembled into a printable and PDF document that can serve as a guide that unites the dog facilities into the City's overall park and open space plans.



Preliminary design plan used to gain public support, determine costs, and guide construction drawings.

**DETAILED SCOPE OF SERVICES:**

Scheduled meetings are noted with red font.

**TASK 1: INVENTORY & ANALYSIS**

Task 1 will help determine appropriate goals, facilitate an easy work flow and build an accurate and robust inventory and analysis to help guide and inform the detailed components of the project. Items within task 1 include:

- Facilitate an in-person kick-off meeting with City Staff and perform a site tour of existing dog facilities.
- Document local, state and federal regulations and guidelines for dog facilities for guidance.
- Review previous community engagement input.
- Create an existing dog facility map.
- Needs assessment of existing facilities.
- Establish and complete a rating matrix system written by Snyder and the City to determine the existing city owned property and property for purchase that would be suitable for a dog facility. The matrix could be scored based on:
  - Affordability of purchase property
  - Population density near site
  - Existing parking stalls, etc.
  - Between 2-4 non City owned parcels would be reviewed
- Define dog facility typology.

**TASK 2: PUBLIC OUTREACH & PROGRAMMING PLAN**

Based on information gathered from Task 1, our team will begin to formulate high-level ideas and concepts of what a city-wide dog park system might look like. These tasks will include:

- Scanable QR codes installed at existing dog park facilities for users to provide feedback about the existing facility and recommendations for improvements.
- Potential dog park and facilities locational and program plan.
  - Typology of parks and their potential locations.
  - City Staff meeting to review plan (virtual).
- Refine dog park and facilities locational and program plan based on City Staff feedback.
- Public meeting (in-person).
  - Precedent imagery of dog park facilities and their amenities.
  - Dot voting on precedents, park typologies and location options.

**TASK 3: CITY DOG FACILITIES MASTER PLAN**

After we've gathered public feedback and City support, our team members will begin to finalize a master plan for dog facilities throughout the City. This task will include detailed review from the City as well as the opportunity for the community to provide feedback. Tasks include:

- Rendered master plan of dog facility locations throughout the City.
  - Typologies

- Rules and regulations of park type.
- Singage for each park type.
- Costs
- Phasing
- Operation and maintenance
- Site visit to proposed sites as needed.
- Review Master Plan with City Staff (virtual).
- Revised Master Plan per City Staff comments.
- Public meeting to present master plan (in-person).

**TASK 4: PRELIMINARY DESIGN & FINAL COMPREHENSIVE PLAN**

This final task will include the creation of conceptual designs and written guidelines for each proposed dog facility within the master plan. These plans will include colored renderings, precedent imagery and high level costs to help guide future development. The tasks include:

- Preliminary concepts of dog facilities with costs.
  - Concepts shall include turf material types, fencing, gate types, waste receptacles, lighting, water fountains, dog play features, trails, seating, parking requirements, etc.
- Phasing plans to help guide appropriate development of the dog facilities.
- City Staff meeting to review preliminary concepts (in-person).
- Revised preliminary concepts and assembled master plan book.
- Final Presentation to Parks, Recreation and Forestry Board (in-person).
- Comprehensive plan book PDF and print version.

**DELIVERABLES**

The following deliverables will be delivered in a complete printable and PDF booklet. As needed, we'll provide large print outs for public meetings and ease of internal reviews.

- 5 City meetings (3 in-person and 2 virtual)
- 2 public meetings (2 in-person)
- Regulations study and report
- Existing dog facilities plan
- Needs assessment
- Scoring matrix
- Survey results
- Dog facilities locational plan
- Rendered master plan and costs
- Preliminary concepts and costs

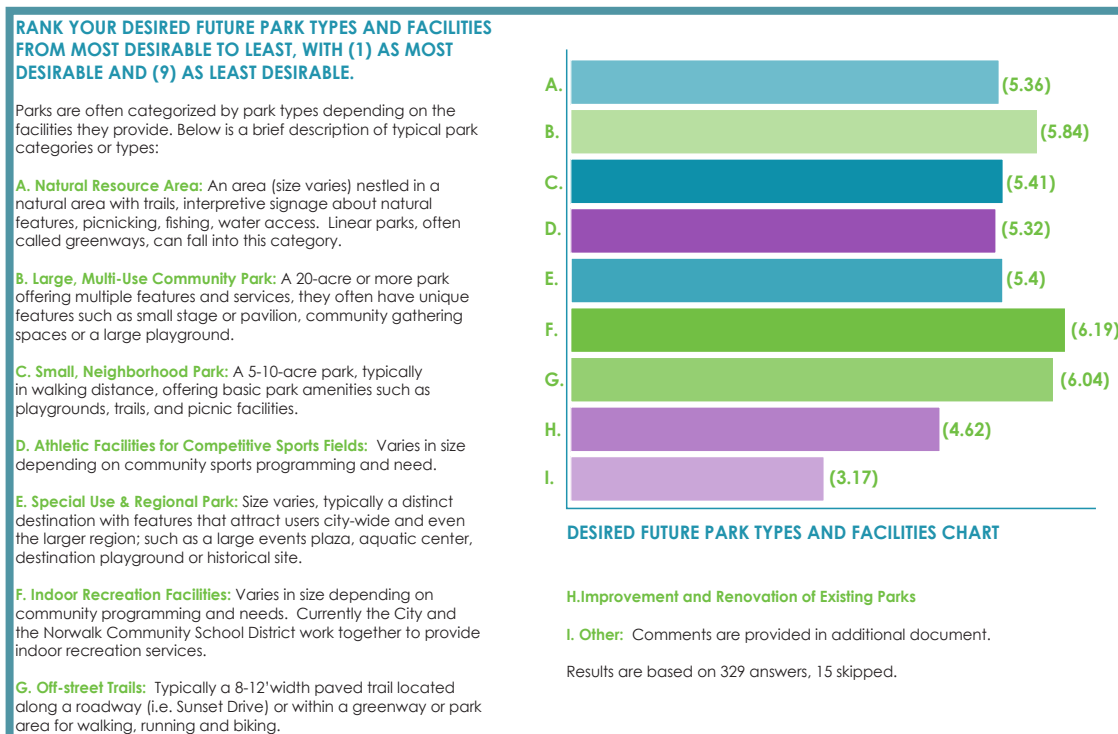


# COMPREHENSIVE PARK AND OPEN SPACE PLAN NORWALK, IOWA



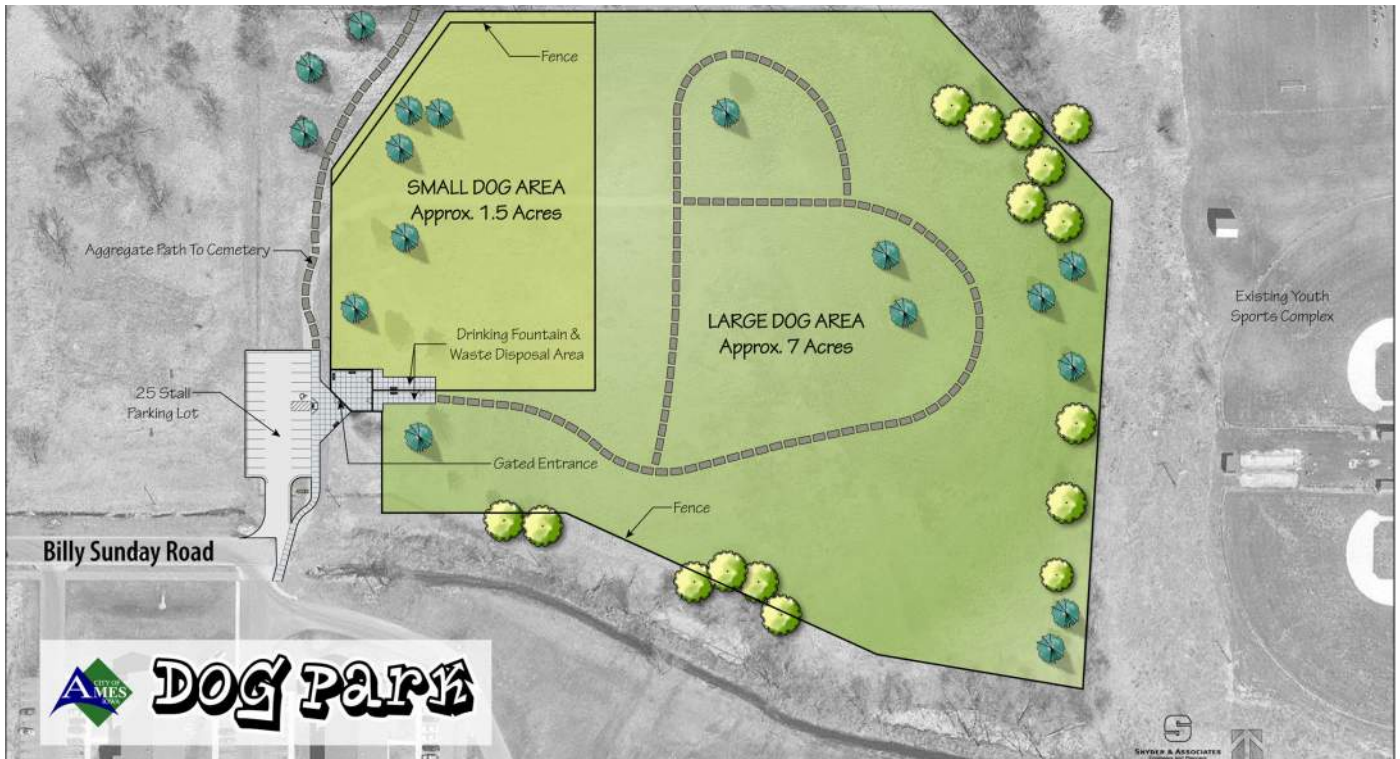
Preliminary park design.

Developed for the City of Norwalk, the parks, trails and open space plan will help guide future green space development for the City. This plan includes a detailed master plan, which links the overall community to existing and proposed parks. Included within the plan, conceptual park designs were created to help foster ideas on park and trail connections and provide high level costs to help target future funding. The project included a detailed survey from residents to help foster ideas for future parks that were included within the comprehensive plan.



Survey results for desired future park types and facilities.

**AMES DOG PARK**  
AMES, IOWA



*Dog park master plan.*



*Gated entry and dog spetic system waste collection.*



*Hard surface trail within the park.*

Snyder & Associates was retained to provide services of master planning, design, construction documents and construction assistance for a new dog park for the community. Improvements included the facility layout for large and small dog areas, entry gates, fencing, drinking fountains, sanitary tank, trails, parking lot and landscaping.

The dog park has been a huge success for the community. Since the original construction, the City of Ames has continued to invest in the dog park by providing trail improvements. The park is a social gathering location enjoyed by many.



**ANKENY DOG PARK**  
ANKENY, IOWA



*Dog park master plan.*



*Dog water fountain and septic waste system.*



*Dog challenge amenities.*

The City of Ankeny requested Snyder & Associates to assist with the design for a dog park in the community. The design process included a comprehensive review of existing dog facilities within the region and a site inventory of the selected site. The Snyder Team worked closely with nearby residents and the City to ensure a park that met residents needs and provided cost effective design solutions. Concept designs were presented to the nearby residents and the City for final approval prior to beginning construction documents for the park.

The dog park improvements included a parking lot, sidewalks and trails, entry gate system with shelter, ponds, monument sign and landscaping. Adjacent residential development areas and parks were also connected to the dog park through a series of City trails.



## DOG BONE AND PINNACLE DOG PARKS \*

CASTLE ROCK, COLORADO



*Aerial photo of Pinnacle Dog Park and recreation center.*



*Double gated entry and wood fence at Pinnacle Dog Park.*



*Entry monument to Dog Bone Park and double gated entry.*

Designed to meet the prescribed standards of two different neighborhoods, Dog Bone Park and Pinnacle Dog Park each had unique site challenges and requests from the separate neighborhoods for their final design.

Pinnacle Dog Park included an expansive 1.50 acres for dogs to roam free. The design included an enclosed landscape area where dogs were prohibited in order to establish landscape that will provide shade in the future.

Dog Bone Park included separated large and small dog areas. Each area included a circuit with dog agility features to increase dog activity and offer a unique amenity for dogs and their owners. The two spaces also used a variety of surface material such as crushed aggregate and turf seed to direct usage and limit erosion throughout the space.

Maintenance guidelines were also included with the final design documents to help extend the life and use of the parks. Ideas such as limited seasonal usage have been successful to help reduce overuse and reductions in overall irrigation needs.

*\*Work completed by Andy Meessmann while at another firm.*



## REFERENCES

Leeann Butschlick  
Director of Public Works, Village of Shorewood, Wisconsin  
414-8472650  
lbutschlick@shorewoodwi.gov  
Project: Hubbard Park Canoe and Kayak Launch

Keith Abraham  
Parks and Recreation Director, City of Ames, Iowa  
515.239.5349  
keith.abraham@cityofames.org  
Project: Ames Dog Park

Bruce Visser  
Mayor, City of Atkins, Iowa  
319-446-7870  
bvisser@cityofatkins.org  
Project: Parks, Trails, and Open Space Comprehensive Plan

Jessica Wolff, AICP  
Assistant Village Administrator / Community Development Director, Village of Grafton, Wisconsin  
262-375-5303  
jwolff@village.grafton.wi.us  
Project: Paramount Records Park

Cassandra Fowler  
Associate Planner, Sauk County Land Resources and Environment  
608-355-4832  
cassandra.fowler@saukcountywi.gov  
Project: Sauk County Farm Education Hub

Sean Brusegar  
Director of Parks, Recreation, and Forestry  
608-839-8968  
sbrusegar@village.cottage-grove.wi.us  
Project: Miracle League Field of Dane County at Bakken Park

Greg Sweeney  
Miracle League of Dane County  
greg.sweeney435@gmail.com  
Project: Miracle League Field of Dane County at Bakken Park

**PROJECT TEAM**

Snyder & Associates has an established record of accomplishment with successful projects resulting from our belief in collaboration and taking a team approach, not only within our own firm but with our clients and project stakeholders as well. Project teams are built with an emphasis on communication and close attention to detail of the project concept, partnership coordination, and concentration on the project until completion. With this approach, coupled with a long list of adaptable support staff, we are able to act quickly to project demands by assigning additional resources as needed.







## ANDY MEESSMANN, PLA

Project Manager, Landscape Architect

### QUALIFICATIONS

Andy brings over a decade of design experience including comprehensive park and trail planning as well as detailed design and construction coordination for public spaces throughout the Midwest. His park and restoration experience has included working with stakeholder groups, the general public, minority groups, and jurisdictional staff. He's worked with both the public and private sectors to design and coordinate projects that have included farmstead restoration, trails, wetlands, prairies, landscape restoration projects, and urban public spaces. He guides clients through the design process to ensure goals are met and costs do not exceed client's budgets.

### SELECT PROJECT EXPERIENCE

#### **Dog Bone Park, Castle Rock, Colorado**

Andy led a project team for the overall park and trail design for a 1,000-acre planned community south of Denver, in Castle Rock, Colorado. The project included the design of a two-acre dog park. The park included two separate areas for large and small dogs, two shade shelters, and site amenities such as dog drinking fountains, trash receptacles, and park signage.

#### **Pinnacle Park Dog Park, Castle Rock, Colorado**

As part of the larger Crystal Valley master planned community, Andy helped lead a team of designers to create the overall park and trail system for the 900-acre community. The Pinnacle Dog Park was part of the community recreation center and included a large fenced open space of approximately 1.50 acres. The dog park featured separated enhanced landscape areas to provide shade and protection from dog use.

#### **Parks, Trails, and Open Space Comprehensive Plan, Atkins, Iowa**

A growing community six miles outside of Cedar Rapids, Iowa, Atkins was in need of a comprehensive plan to guide park and trail development that would coincide with the City's growing population. Andy organized existing needs assessment surveys of current parks, studied development trends and patterns, and examined the City's existing conditions for park improvements and new park and trail locations. The team created a Master Plan that guided the overall development of park and trail locations. The project also included the creation of conceptual designs and costs for each park space. The project is currently being reviewed by the City board.

#### **Paramount Records Park, Grafton, Wisconsin**

As the project manager and lead design consultant, Andy has guided the master planning and design process for this unique project. The park site is the former home of the Wisconsin Chair Company and also Paramount Records (a lead producer of Blues records in the early 1900s). Andy led discussions with musicians, historians, and the public to capture the rich history and story of the site. He organized and collaborated with metal sculpture artists and graphic designers to help assemble designs for exhibit spaces that would tell this unique story. The project is currently in the fundraising phase with plans for construction in 2024.

#### **Hubbard Park Canoe and Kayak Launch, Shorewood, Wisconsin**

Lacking adequate "take out" and "put in" locations on the Milwaukee River, Andy worked with the Village of Shorewood to design a canoe and kayak launch in Hubbard Park. Just five miles from Lake Michigan and Downtown Milwaukee, the launch provides a needed exit and entry point into the river. Further, by utilizing larger natural stone steps with wide treads, the launch functions for casual river users and young children by providing a place to easily walk down and rest at the river. Construction was completed in December of 2022.

#### **Sauk County Farm Education Hub, Sauk County, Wisconsin**

Andy's leading an internal team that's helping design and plan for 566 acres where farmers, residents and visitors of the farm can learn about regenerative, profitable and resilient agricultural practices through on-site demonstration, research, and collaborative partnerships. 14 acres of the site will include an educational hub that features an event center, community gardens, outdoor education space and historic preservation and restoration of the "County Poor Farm and Asylum's" remaining structures.

#### **Education**

Master of Landscape Architecture, Kansas State University, 2009

Bachelor of Science in Community & Regional Planning, Iowa State University, 2006

#### **Professional Registration**

Professional Landscape Architect - Wisconsin, Iowa, and Colorado

#### **Technical Specialties**

- Park Master Planning through Construction Drawings
- Detail Park Design
- Multi-use Trail Design
- Canoe and Kayak Launch Design
- Cost Estimation
- Planting Design
- Site Detail Design & Construction Coordination
- Public Engagement
- Project Management
- Project & Marketing Photography

#### **Affiliations**

- American Society of Landscape Architects - Wisconsin Chapter
- Downtown Madison, Inc.
- Wisconsin Park and Recreation Association



## SCOTT ANDERSON, PE

### Civil Engineer

#### QUALIFICATIONS

Scott has over 20 years of municipal and private development project experience in the state of Wisconsin. The majority of Scott's municipal work entails project coordination among municipal staff, project design, and code compliance for stormwater infrastructure and road projects. In addition to Scott's municipal design experience, he often guides municipalities through the public bidding process and final close out for construction. Scott also has successfully teamed with numerous architectural firms to deliver public and private site development plans throughout the Madison metropolitan area. Scott has assisted numerous clients with Wisconsin DOT guidelines, Wisconsin Emergency Management, Hazard Mitigation Grant Program, TRID funding, DNR, FEMA, and the Army Corps of Engineers.

#### SELECT PROJECT EXPERIENCE

##### Municipal Engineer Services For:

Town of Vienna, Wisconsin (2012 to present)  
 Town of Sumner, Wisconsin (2010 to present)  
 Town of Elba, Wisconsin (2020 to present)  
 Town of West Point, Wisconsin (2022 to present)

Scott serves as the Town Engineer and assists these towns with road projects, grant awards, development reviews, and day to day operations as engineering needs arise. Scott uses his experience to stretch the dollars that these municipalities have to go as far as they can. This unique perspective will assist in this dog park project from looking at the end result from a public municipality ownership.

##### Paramount Records Park, Grafton, Wisconsin

Scott worked on the site grading, permitting, design documents, cost estimating and final bid plans for this unique park project. The park site is the former home of the Wisconsin Chair Company and also Paramount Records (a lead producer of Blues records in the early 1900s). Situated on a hillside, site challenges were overcome to provide handicap access down to the major historical portions of the site. The project is currently in the fundraising phase with plans for construction in 2024.

##### Sauk County Farm Education Hub, Sauk County, Wisconsin

Scott is leading the team to perform the site grading, stormwater management, permitting, cost estimating, and site plan documentation for this project. 14 acres of the 566 acre site will include an educational hub that features an event center, community gardens, outdoor education space and historic preservation and restoration of the "County Poor Farm and Asylum's" remaining structures. The project is currently wrapping up for a fall submittal.

##### Fire Station #14, Madison, Wisconsin

Scott worked closely with the architect, City of Madison, and fire department staff to ensure the site, in combination with the building, would achieve maximum sustainability standards and results. The site included permeable paving to help infiltrate water and newly designed and constructed wetlands to absorb runoff. Scott performed site planning, design, layout, permitting, erosion control, stormwater management, and construction administration for the fire station. The project was completed in December 2018 and recently received LEED platinum certification.

#### Education

BSCE, University of Wisconsin – Platteville, 2002

#### Professional Registration

Professional Engineer,  
 Wisconsin E-38818

#### Technical Specialties

- Site Feasibility Plans
- Site Planning
- Stormwater Management
- Grading Plans
- Infrastructure Improvements
- Pavement Management
- Drainage Correction
- Land Development
- Project Management
- Municipal Engineering
- Permitting

#### Affiliations

- American Public Works Association
- North American Stormwater & Erosion Control Association
- Society of American Military Engineers
- Wisconsin Park and Recreation Association





## TIM WEST, PLA

Landscape Architect

### QUALIFICATIONS

Tim has been practicing in the field of landscape architecture and park development since 1997. His background experience includes analysis, design, master planning, and construction management. His park experience includes design and development of open space, playgrounds, recreation fields and plazas. Tim has substantial experience in facilitating stakeholder and public input meetings.

### SELECT PROJECT EXPERIENCE

#### Multiple Comprehensive Park and Trail Planning

- Polk City Parks Comprehensive Plan, Polk City, Iowa
- City of Altoona Comprehensive Plan, Altoona, Iowa
- Norwalk Parks System Comprehensive Plan, Norwalk, Iowa
- Ada Hayden Heritage Park, Ames, Iowa
- Ames Dog Park, Ames, Iowa
- Ankeny Dog Park, Ankeny, Iowa

#### Education

Bachelor of Science in Landscape Architecture, Iowa State University 1996

#### Professional Registration

Licensed Landscape Architect, State of Iowa 412



## JULIE KRUSE

Planner, Snyder & Associates

### QUALIFICATIONS

Julie Kruse is a Planner with nearly 20 years of public sector planning experience. Julie attended Iowa State University, where she majored in Geology. After completing her degree, Julie pursued a Master's in Community and Regional Planning.

Julie has worked for cities of varying size and character. Her work has primarily focused on current planning, neighborhood planning, and urban planning with a passion for community engagement. Additionally, she has experience in land use planning, zoning code creation, site plan and subdivision review, creating redevelopment plans and more.

In her role as Planner at Snyder & Associates, Julie is responsible for planning initiatives and will work with all divisions within Snyder & Associates contributing any service that a planner can assist. Julie excels in building successful relationships with community groups, elected officials, and other stakeholders in the development arena.

### SELECT PROJECT EXPERIENCE

#### Planning Projects

- Downtown Revitalization Plan, Ames, Iowa
- Public Engagement for College Creek Neighborhood Projects, Ames, Iowa
- Miracle Park Site Plan Review, Ames, Iowa
- Hira Neighborhood Park Acquisition and Revitalization, Ames, Iowa
- Charles Schwab Stadium Site Plan, City of Omaha Nebraska

#### Education

Bachelor of Science, Geology, Iowa State University, 2002

Community and Regional Planning, Iowa State University, 2002-2004

**PROJECT SCHEDULE**

Snyder & Associates is an established multifaceted consulting firm and has a number of projects in-house at all times. We closely match our professional resources with project workload so that personnel are available to respond to each of our client's needs. Project success is our marketing plan; therefore, we are careful not to pursue project assignments that will adversely impact work that is currently underway. We offer our assurance and can state with full confidence and without reservation that the Snyder & Associates team, along with our partners, can meet the proposed demands of this project in a timely and effective manner.

The below schedule is a snapshot of how we *think* the project will unfold. Once awarded the project, we will meet with the City and fine tune a schedule that will work with all parties while keeping the March deadline in mind.

DOG FACILITIES & REGULATIONS STUDY, RECOMMENDATIONS & CONCEPT DESIGNS																															
OCTOBER				NOVEMBER				DECEMBER				JANUARY				FEBRUARY				MARCH											
<b>1</b>	<b>SITE INVENTORY</b>							<b>2</b>	<b>OUTREACH AND PROGRAMMING</b>							<b>3</b>	<b>MASTER PLAN</b>							<b>4</b>	<b>PRELIMINARY DESIGN</b>						
<b>Deliverable:</b> Award and contract Kickoff meeting Regulations study and report Raiting matrix Existing facility map Needs assessment Dog facility typology								<b>Deliverable:</b> QR code feedback Dog facilities locational plan City Staff review (virtual) Refined dog park and facilities plan Public meeting (in-person)								<b>Deliverable:</b> Rendered master plan City Staff review (virtual) Revised master plan Public meeting (in-person)								<b>Deliverable:</b> Preliminary concepts for all dog park facilities Phasing plan City Staff review meeting (in-person) Revised preliminary plans (in-person) Final presentation to Parks, Recreation and Forestry Board (in-person)							

**SITE VISITS:**

Based on our detailed scope of services, we'd anticipate two site visits. One visit would be immediately after the initial kick-off meeting. This site visit would be to review the existing dog facilities and their overall functionality, design, and amenities. Site visit two would serve the purpose to confirm the selected parks based on the ranking matrix performed in Task 1.

Additional site visits could occur before or after any of the scheduled in-person meetings. Additionally, we are currently working on several projects in the area and could visit sites in tandem with our other work.

Per our deliverables within the detail scope of services, we proposed a total of five in-person meetings.

Within our Cost/Fees section of this proposal we have included our hourly rates that would apply if additional in-person meetings were requested that would fall outside of our outlined scope of services.



*Sauk County Farm site tour.*