

DESCRIPTION

The IMPACT Elite Trapezoid cutoff wall luminaire makes an ideal complement to site design. Rugged construction and full cutoff classified optics provide facade and security lighting for light restricted zones surrounding schools, office complexes, apartments, and recreational facilities. U.L. and cUL Listed for wet locations in down mount applications and damp locations in up mounted applications.

Catalog #		Type
Project		
Comments		Date
Prepared by		

SPECIFICATION FEATURES

Construction

Two-piece die-cast aluminum housing and removable hinged door frame nests securely for precise tolerance control and repeatability. Hinged door frame inset for clean mating with housing surface and secured via two [2] captive stainless steel fasteners. Optional tamper resistant torx-head fasteners [TR] offer vandal resistant access to the electrical compartment. 1/8" clear, heat and impact resistant tempered flat glass lens combine with molded silicone gasket to seal the integrated optical assembly, while ensuring peak optical performance.

Electrical

Integral hard mount electrical components are secured and grounded within the die-cast aluminum housing for optimal heat sinking and extended component life. Minimum starting temperatures are -40°C (-40°F) for HPS and -30°C (-22°F) for MP.

Compact fluorescent luminaires feature electronic universal 120-277V high efficiency 50/60Hz ballast with -18°C (-0°F) minimum starting temperature. Available in 50-175 HID or 26-84 CF. Emergency power pack available for 26-64 CF.

Optical

Premium anodized 95% reflective aluminum optical assemblies provide high efficiency Type II distribution. Optional silk screened house side flat glass shield provides decreased wall brightness. All Impact Elite Wall Series luminaires classify as IESNA full cutoff in downlight applications. Available with 10% or 50% upright options for architectural highlighting of building details.

Mounting

Gasketed and zinc plated rigid steel mounting attachment fits directly to 4" j-box or wall with the Impact Elite "Hook-N-Lock" system for

fast installation and mounting in both traditional downlighting [wet location] or inverted uplighting [damp location] mounting positions. Secured via two [2] captive corrosion resistant allen head set screws concealed from view, but accessible from bottom of fixture.

Finish

Housing and door are protected with 5-stage premium TGIC polyester powder coat paint. Premium TGIC powder coat finishes withstand extreme climate changes while providing optimal color and gloss retention over the fixture's installed life. Standard colors include black, bronze, grey, white, dark platinum and graphite metallic. RAL and custom color matches available. Consult McGraw-Edison Architectural Colors Brochure for complete selection.



IST IMPACT ELITE TRAPEZOID

- 50 - 175W
- Pulse Start Metal Halide
- Metal Halide
- High Pressure Sodium
- 26 - 84W
- Compact Fluorescent

FULL CUTOFF
WALL MOUNT LUMINAIRE

DARK SKY **FCO**
COMPLIANT Full Cutoff

NOTE: In downlight applications only.

TECHNICAL DATA

UL1598 Listed, CUL Listed
25°C Maximum Ambient Temperature
External Supply Wiring 90°C Minimum
Down Mounted—Wet Location
Up Mounted—Damp Location

ENERGY DATA

High Reactance Ballast Input Watts

50W HPS HPF (66 Watts)
50W MP HPF (72 Watts)
70W HPS HPF (91 Watts)
70W MP HPF (90 Watts)
100W HPS HPF (130 Watts)
100W MP HPF (129 Watts)
150W HPS HPF (190 Watts)
150W MP HPF (185 Watts)

Electronic Ballast Input Watts

26W CF HPF (29 Watts)
32W CF HPF (36 Watts)
42W CF HPF (46 Watts)
52W CF HPF (55 Watts)

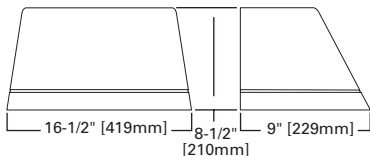
SHIPPING DATA

Approximate Net Weight:
18 lbs. (8 kgs.)



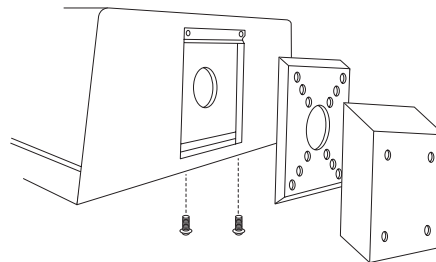
ADH100166
2013-06-13 15:30:31

STANDARD DIMENSIONS

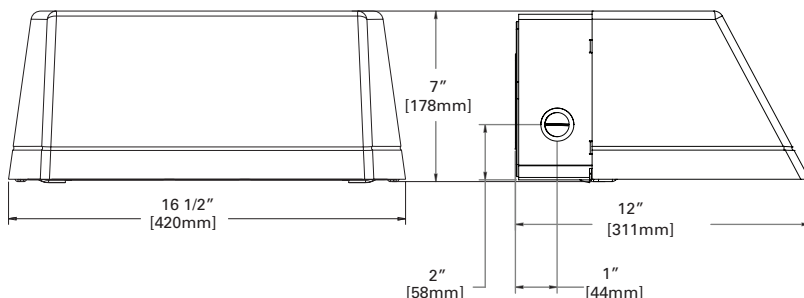


HOOK-N-LOCK MOUNTING

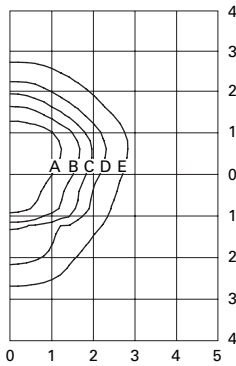
(Mounting attachment included. J-Box not included.)



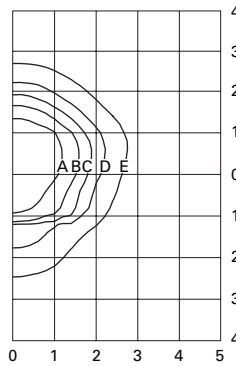
DIMENSIONS WITH BACK BOX



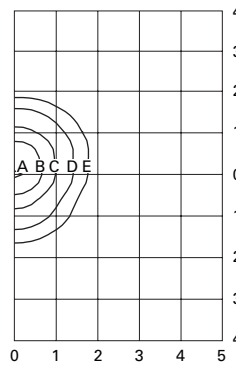
PHOTOMETRICS (COMPLETE IES FILES AVAILABLE AT WWW.COOPERLIGHTING.COM)



IST-150-MP-XX-2S
150—Watt MP
14,000—Lumen Clear Lamp



IST-150-HPS-XX-2S
150—Watt HP
16,000—Lumen Clear Lamp



IST-42-CF-XX-2S
42—Watt CF
3,200—Lumen Lamp

Footcandle Table

Select mounting height and read across for footcandle values of each isofootcandle line. Distance in units of mounting height.

Mounting Height	Footcandle Values for Isofootcandle Lines				
	A	B	C	D	E
150-MP / 150-HPS					
10'	7.20	2.88	1.44	0.72	0.29
12'	5.00	2.00	1.00	0.50	0.20
14'	3.65	1.46	0.73	0.37	0.07
42-CF					
18'	2.46	1.23	0.62	0.25	0.12
20'	2.00	1.00	0.50	0.20	0.10
25'	1.28	0.64	0.32	0.13	0.06

ORDERING INFORMATION

Sample Number: IST-100-MP-120-2S-GM

--	--	--	--	--	--	--	--	--	--	--

Product Family

IST=Impact Elite Small Trapezoid

Lamp Wattage ¹

- MP**
- 50=50W²
- 70=70W²
- 100=100W
- 150=150W
- HPS**
- 50=50W²
- 70=70W²
- 100=100W
- 150=150W
- MH**
- 175=175W¹
- CF**
- 26=(1) 26W
- 32=(1) 32W
- 42=(1) 42W
- 52=(2) 26W
- 64=(2) 32W
- 84=(2) 42W

Lamp Type

- MP**=Pulse Start Metal Halide
- HPS**=High Pressure Sodium
- MH**=Metal Halide¹
- CF**=Compact Fluorescent
- Voltage ³**
- 120=120V
- 208=208V
- 240=240V
- 277=277V
- 347=347V
- 480=480V
- DT**=Dual-Tap⁴
- MT**=Multi-Tap⁴
- TT**=Triple-Tap⁴
- E1**=Electronic 120-277V⁵

Distribution

- 2S**=Type II Segmented
- Color ⁶**
- AP**=Grey
- BZ**=Bronze
- BK**=Black
- WH**=White
- DP**=Dark Platinum
- GM**=Graphite Metallic

Options

- F**=Single Fuse (120, 277 or 347V)⁷
- FF**=Double Fuse (208, 240 or 480V)⁷
- L**=Lamp Included
- P**=Button Type Photocontrol (120V, 208, 240, or 277V)
- TR**=Tamper Resistant Fasteners
- UPL10**=10% Uplight
- HS**=House Side Shield Glass⁵
- PL**=Polycarbonate Lens^{5, 8}
- Q**=Quartz Restrike T4 Lamp⁹
- EM**=Emergency Quartz Restrike T4 Lamp w/ Time⁹ Delay Relay
- EM/SC**=Emergency Separate Circuit T4 Lamp^{9, 10}
- QMR**=Quartz Restrike MR16 Lamp^{11, 12}
- 2QMR**=Quartz Restrike w/ (2) MR16 Lamps^{11, 12}
- 2QMR/SC**=Quartz Restrike (1) MR16 Lamp and (1) Emergency Separate Circuit MR16 Lamp^{10, 11, 12}
- EMMR**=Emergency Quartz Restrike MR16^{11, 12} Lamp w/ Time Delay Relay
- 2EMMR**=Emergency Quartz Restrike with (2)^{11, 12} MR16 Lamps w/Time Delay Relay
- 2EMMR/SC**=Emergency Quartz Restrike^{10, 11, 12} with Time Delay Relay (1) MR16 and (1) MR16 Emergency Separate Circuit Lamp
- EM/SC/MR**=Emergency Separate Circuit^{10, 11, 13} MR16 Lamp
- 2EM/SC/MR**=Emergency Separate Circuit^{10, 11, 13} with (2) MR16 Lamps
- EM/SC/12V**=Emergency Separate Circuit 12V^{10, 14} Low Voltage (1) MR16 Lamp
- 2EM/SC/12V**=(2) Emergency Separate Circuit^{10, 14} MR16 Lamps (12V)
- EMI40B**: Emergency Cold Temperature (UL924¹⁵ Listed) Power Pack -18 degrees C / 0 degrees F, (1) CF Lamp
- 2EIM40B**: Emergency Cold Temperature^{15, 16} (UL924 Listed) Power Pack -18 degrees C/0 degrees F, (2) CF lamps with Back Box matching housing finish.
- CFEMB**: Emergency CF Power Pack (UL924¹⁷ Listed) (1) CF Lamps, 0 Degrees C/32 Degrees F
- 2CFEMB**: Emergency CF Power Pack (UL924^{16, 17} Listed) , 0 Degrees C/32 Degrees F, (2) CF Lamps, with Back Box matching housing finish.

- Notes:**
- 1 HID lamps are medium base. 175W MH is available for non-U.S. markets only.
 - 2 Not available in 480V.
 - 3 Products also available in non-US voltages and 50Hz for international markets. Consult your Cooper Representative for availability and ordering information.
 - 4 Dual-Tap ballast is 120/277V wired 277V. Multi-Tap ballast is 120/208/240/277V wired 277V. Triple-Tap ballast is 120/277/347V wired 347V.
 - 5 Available with CF Option only. In cold temperatures, compact fluorescent lamps produce lower illumination levels.
 - 6 Add as suffix.
 - 7 Must specify voltage.
 - 8 Down lighting position only.
 - 9 (1) 120W Lamp, 100W maximum quartz lamp. Utility power may need to cycle to allow HID lamp to cool in warm climates. Not available with CF Option. Lamp supplied by others.
 - 10 Leads out of the back of the unit for auxiliary power.
 - 11 (1) or (2) 120V Lamps. GU10 base, 50W maximum each. Lamps supplied by others.
 - 12 Not available with CF lamps.
 - 13 Not available with 52, 64, 84 CF wattages.
 - 14 (1) or (2) 12V bi-pin lamp, socket GU5.3 base, 35W maximum. Power supplied by low voltage DC source (supplied by others). Lamp supplied by others.
 - 15 Specify 120 or 277V, (-18°C) minimum temperature, not available with UPL10.
 - 16 Not available in 84 CF configuration.
 - 17 Specify 120 or 277V, (0°C) minimum temperature, not available with UPL10.
 - 18 Order separately, replace XX with color designation.

Accessories

MA1254-XX- Thruway back box - Impact Elite Trapezoid¹⁸