

PROJECT

PROJECT:
Waukesha Water Utility Operations Center
 Chapman Road

OWNER:
 Waukesha Water Utility

PROJECT ISSUE DATE:
 November 5, 2024



10505 Corporate Drive, Pleasant Prairie, WI 53158
 phone: 262.857.8101 web: www.kuenyarch.com

©2025 Kueny Architects L.L.C. - All Rights Reserved

CONSULTANTS

ARCHITECT:
Kueny Architects
 Phone: 262.857.8101
 Address: 10505 Corporate Drive, Suite 100
 Pleasant Prairie, Wisconsin 53158

Architect of Record - Jon P. Wallenkamp
 P:414.680.3197

Project Manager - Lee Anderson
 P:262.945.7708

CIVIL

Terra Tec Engineering
 Phone: 262.377.9905
 Address: W67N222 Evergreen Blvd., Suite 205
 Cedarburg, WI 53012

Engineer of Record - Linda Johnson

MEP

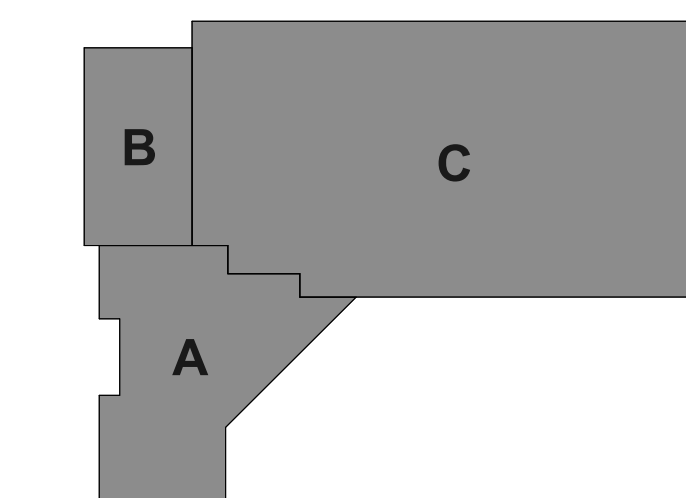
RTM Engineering Consultants
 Phone: 414.273.1432
 Address: 316 N. Milwaukee Street, Suite 560
 Milwaukee, WI 53202

Engineer of Record - Timothy Larsen, PE

REVISIONS

REV #	DESCRIPTION	DATE

KEY PLAN

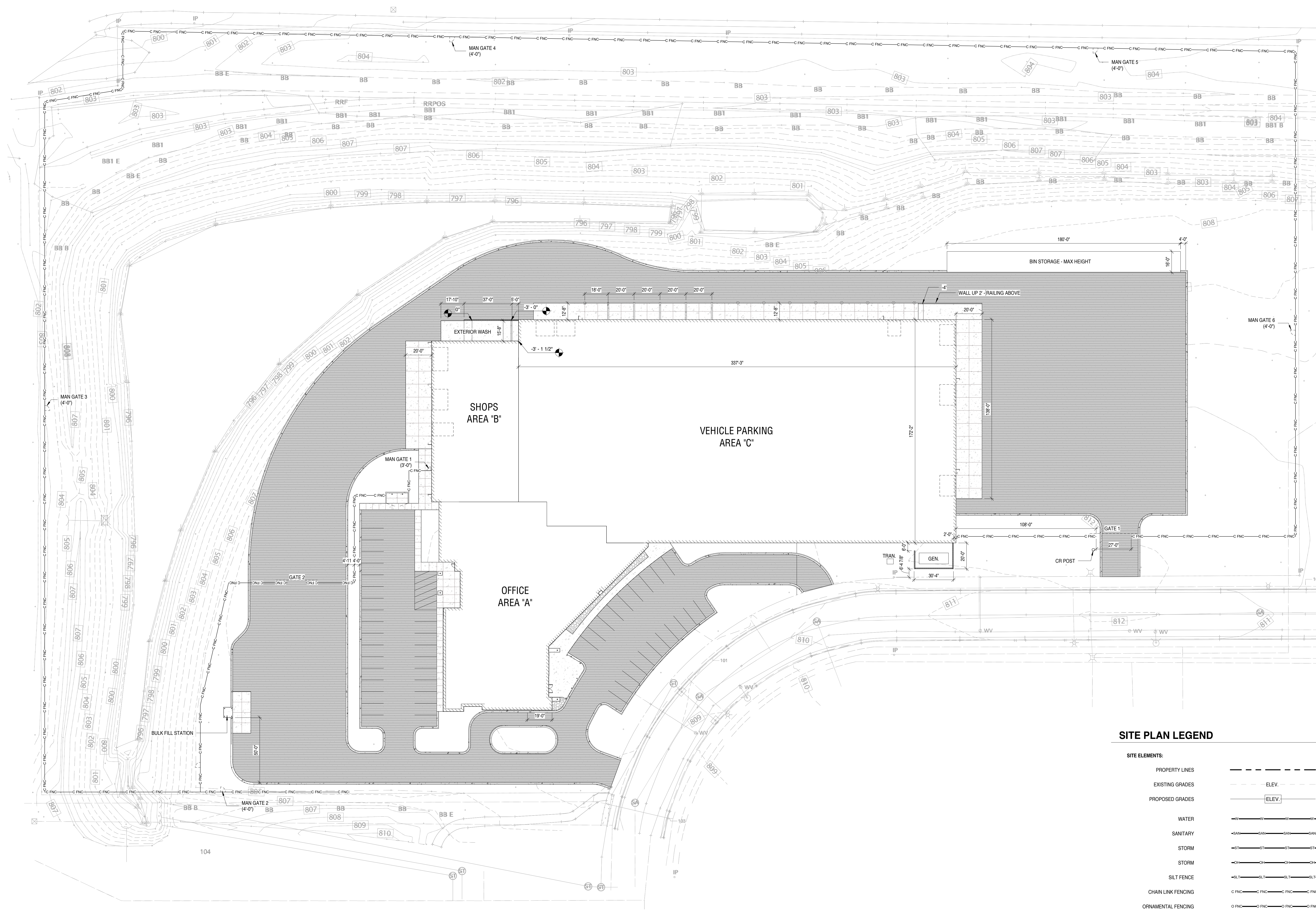


SHEET

SHEET TITLE:
Architectural Site Plan

A101

NOT FOR CONSTRUCTION



SITE PLAN LEGEND

SITE ELEMENTS:

- PROPERTY LINES: - - - - -
- EXISTING GRADES: ELEV. (with dashed line symbol)
- PROPOSED GRADES: ELEV. (with solid line symbol)
- WATER: (with wavy line symbol)
- SANITARY: (with line symbol containing 'S')
- STORM: (with line symbol containing 'ST')
- STORM: (with line symbol containing 'CH')
- SILT FENCE: -S-T- -S-T- -S-T- -S-T-
- CHAIN LINK FENCING: C FNC - C FNC - C FNC - C FNC
- ORNAMENTAL FENCING: O FNC - O FNC - O FNC - O FNC
- GRASS AREAS: (with cross-hatch symbol)
- MULCH AREAS: (with diagonal hatch symbol)
- ASPHALT PAVING: (with horizontal hatch symbol)
- LANDSCAPE STONE: (with irregular pattern symbol)
- CONCRETE: (with stippled symbol)
- BLG. BLOCKS: (with empty square symbol)

1 Site Plan - Architectural
 1" = 30'-0"