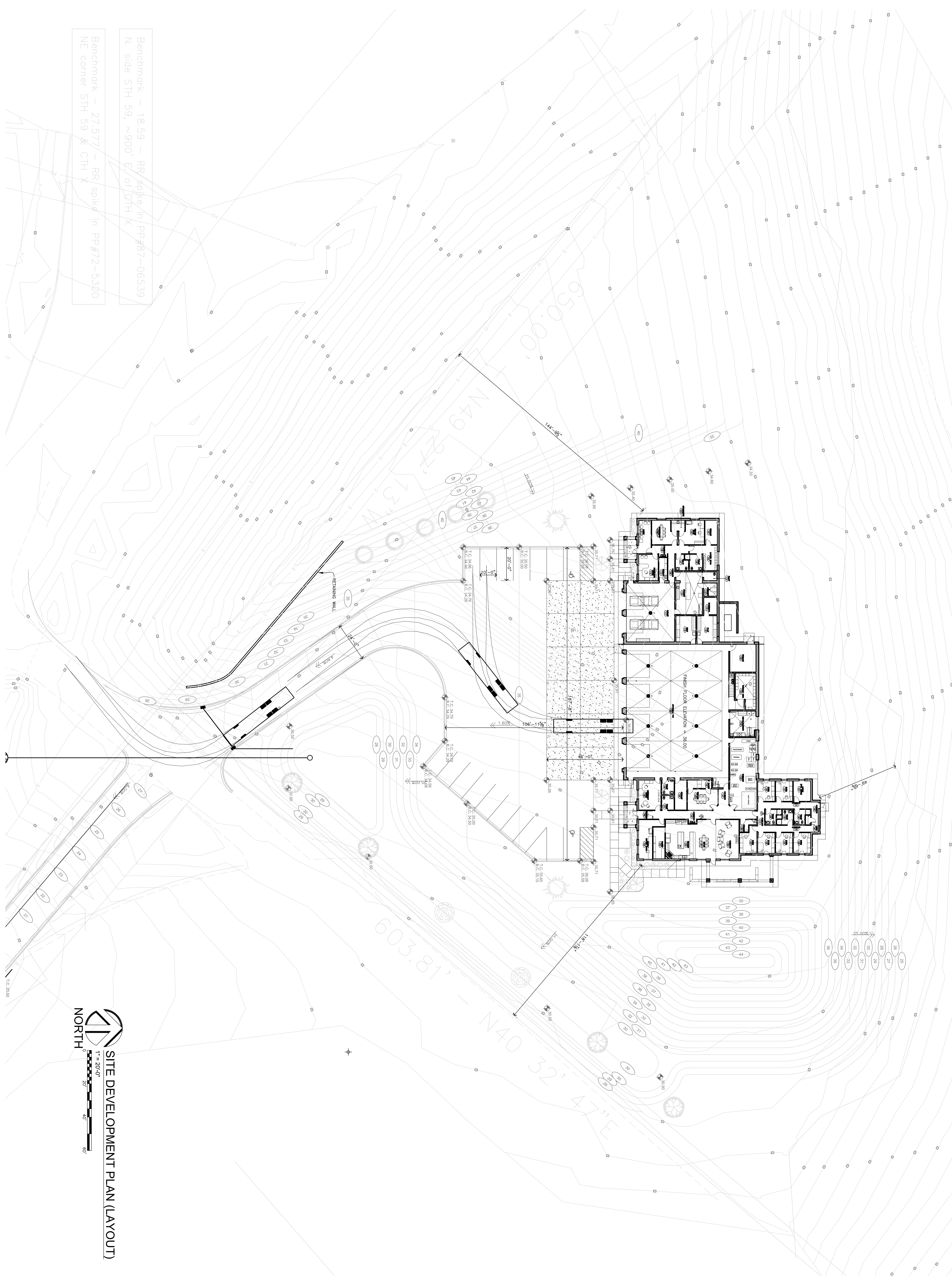


Benchmark — 18.59 — RR spike in PP#87-06539
 N. side STH 59, ~900' E. of POTH X
 Benchmark — 27.577 — RR spike in PP#72-5360
 NE corner STH 59 & CTH X



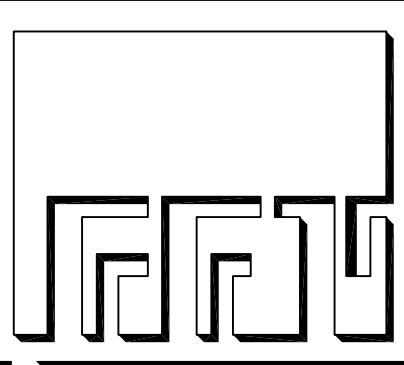
SITE DEVELOPMENT PLAN (LAYOUT)
 1" = 20'-0"
 NORTH

TYPE	DATE	BY	REV#
	12/01/2016		

PROJECT NO. 13055
 SHEET NO. C101

CONSULTANT

A NEW FIRE STATION NO. 3 FOR THE CITY OF WAUKESHA
 2440 S. T. H. "59"
 WAUKESHA, WISCONSIN



FISCHER-FISCHER-THEIS, INC. ARCHITECTS • ENGINEERS • PLANNERS
 S22 W22660 BROADWAY • WAUKESHA, WISCONSIN 53186-8199
 (262) 547-6969 • FAX (262) 547-6960 • E-MAIL: fft@fftarchitects.com

PRELIMINARY DRAWING
 NOT FOR CONSTRUCTION
 DATE PRINTED: 12/02/2016