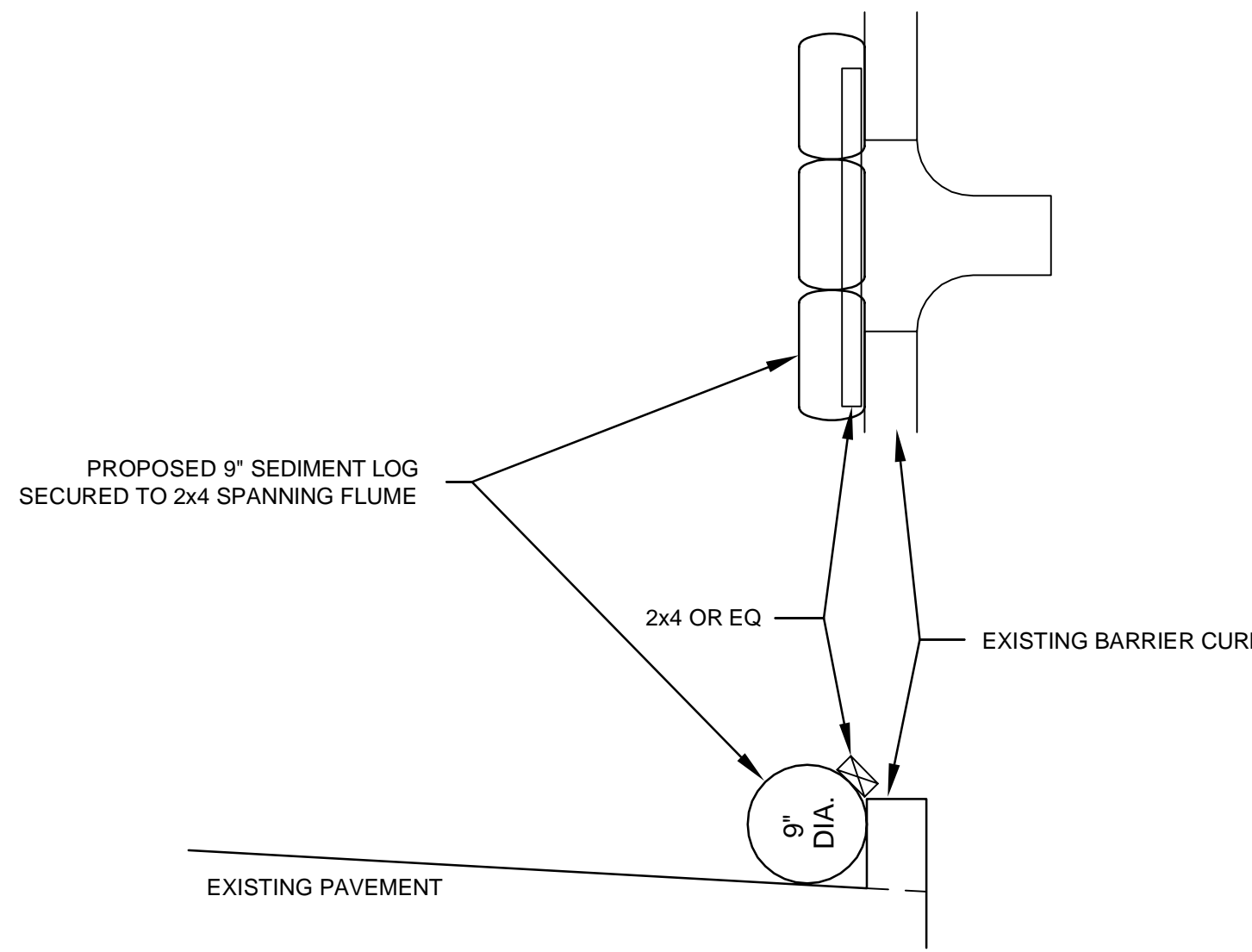
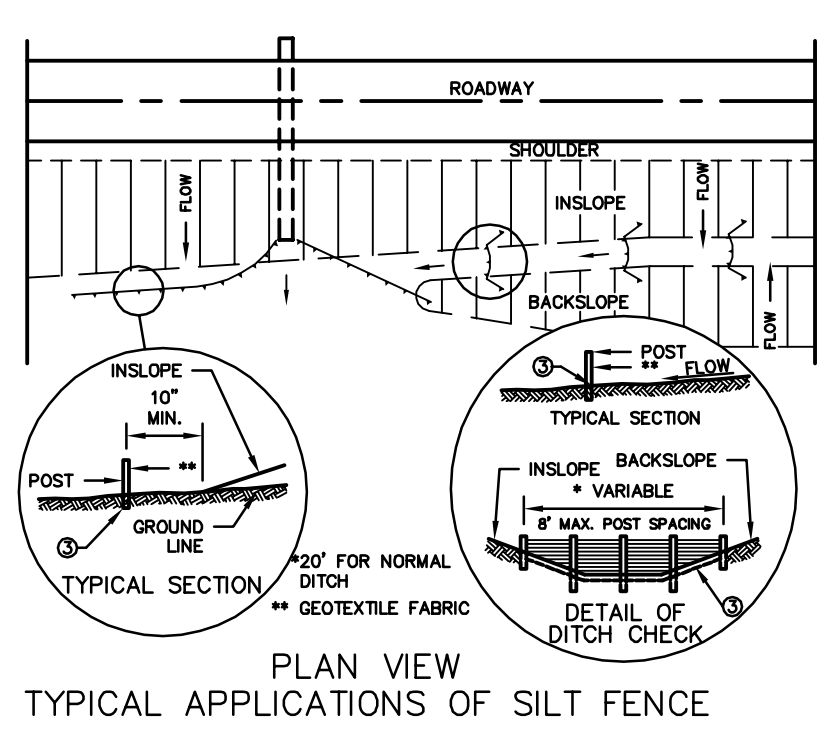


- LEGEND**
- EXISTING SECTION MONUMENT
 - EXISTING IRON PIPE FOUND
 - EXISTING LIGHT POLE
 - EXISTING HYDRANT
 - EXISTING WATER VALVE UNDERGROUND
 - EXISTING SANITARY MANHOLE
 - EXISTING GAS METER
 - EXISTING CABLE TV PEDESTAL
 - EXISTING HOUSE VALVE
 - EXISTING POWER POLE
 - EXISTING ELECTRIC PEDESTAL
 - EXISTING MAILBOX
 - EXISTING SIGN
 - EXISTING TELEPHONE PEDESTAL
 - EXISTING CATCH BASIN ROUND
 - EXISTING 12" CONC BASES
 - EXISTING FLOODLIGHT
 - EXISTING FLAGPOLE
 - EXISTING ELECTRIC METER
 - EXISTING DECIDUOUS TREE
 - EXISTING CONIFEROUS TREE

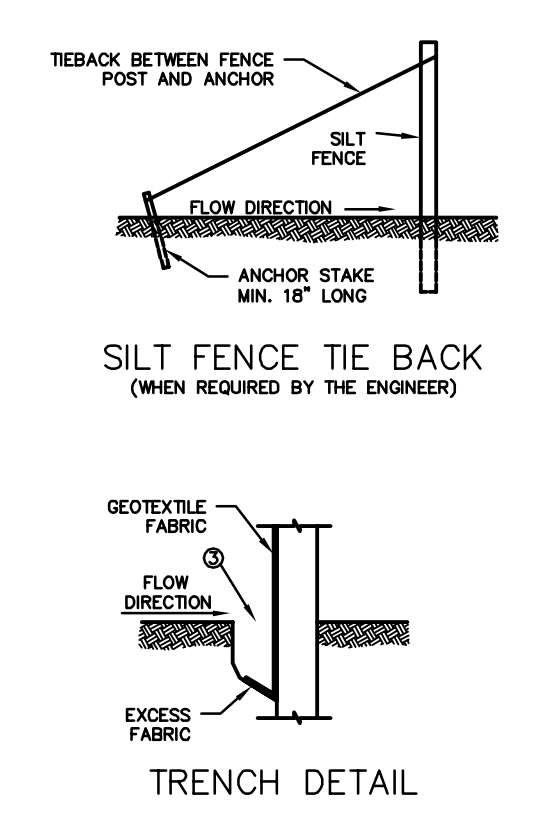


SILT LOG FLUME PROTECTION
NOT TO SCALE

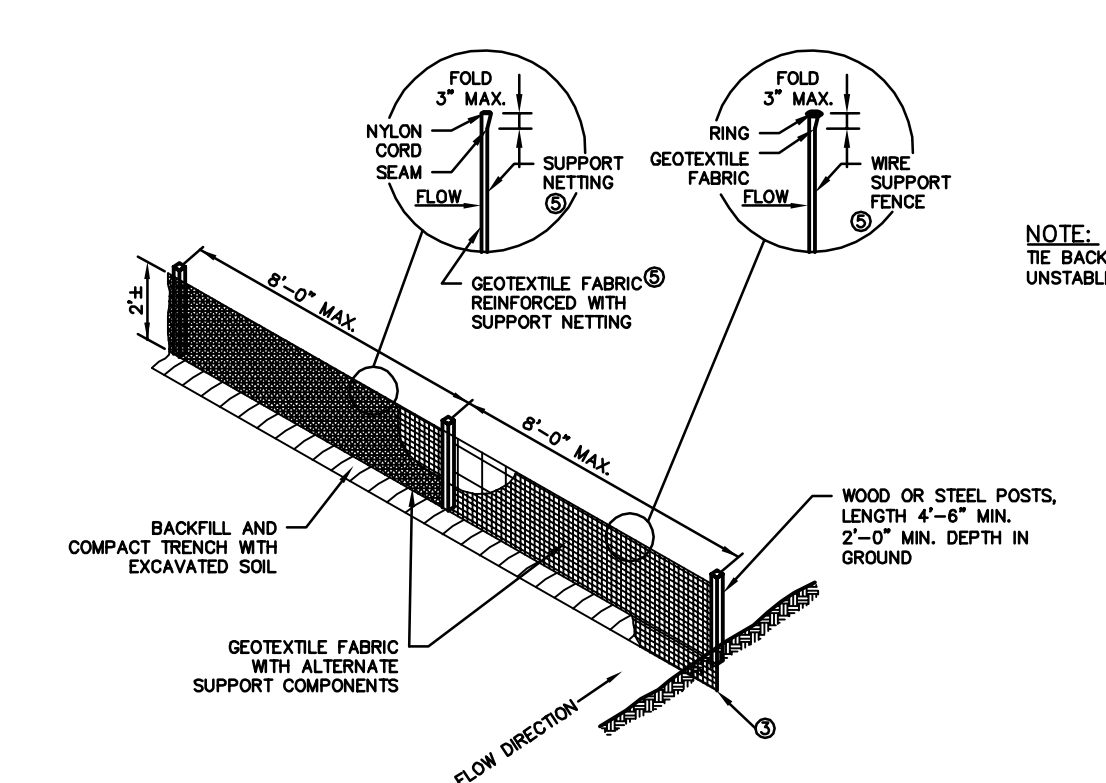
- GENERAL NOTES:**
- DETAIL OF CONSTRUCTION NOT SHOWN ON THIS DRAWING SHALL CONFORM TO THE PERTINENT REQUIREMENTS OF THE STANDARD SPECIFICATIONS AND APPLICABLE SPECIAL PROVISIONS.
- WHEN POSSIBLE THE SILT FENCE SHOULD BE CONSTRUCTED IN AN ARC OR HORSESHOE SHAPE, WITH THE ENDS POINTING UPSLOPE TO MAXIMIZE BOTH STRENGTH AND EFFECTIVENESS.
- 1 CROSS BRACE WITH 2" x 4" WOODEN FRAME OR EQUIVALENT AT TOP OF POSTS AS DIRECTED BY THE ENGINEER.
 - 2 MINIMUM 14 GAUGE WIRE REQUIRED, FOLD FABRIC 3" OVER THE WIRE AND STAPLE OR PLACE WIRE RINGS ON 12" C-C.
 - 3 EXCAVATE A TRENCH A MINIMUM OF 4" WIDE AND 6" DEEP TO BURY AND ANCHOR THE GEOTEXTILE FABRIC, FOLD MATERIAL TO FIT TRENCH AND BACKFILL AND COMPACT TRENCH WITH EXCAVATED SOIL.
 - 4 WIRE SUPPORT FENCE SHALL BE 14 GAUGE MINIMUM WOVEN WIRE WITH A MAXIMUM MESH SPACING OF 6", SECURE TOP OF GEOTEXTILE FABRIC TO TOP OF FENCE WITH STAPLES OR WIRE RINGS AT 12" C-C.
 - 5 GEOTEXTILE FABRIC SHALL BE REINFORCED WITH AN INDUSTRIAL POLY-PROPYLENE NETTING WITH A MAXIMUM MESH SPACING OF 3/4" OR EQUAL. A HEAVY DUTY NYLON TOP SUPPORT CORD OR EQUIVALENT IS REQUIRED.
 - 6 STEEL POSTS SHALL BE STUDDED "TEE" OR "U" TYPE WITH A MINIMUM WEIGHT OF 1.28 lbs/in. ft. (WITHOUT ANCHOR), FIN ANCHORS SUFFICIENT TO RESIST POST MOVEMENT ARE REQUIRED. WOOD POSTS SHALL BE A MINIMUM SIZE OF 4" DIA. OR 1-1/2" x 3-1/2" EXCEPT WOOD POSTS FOR GEOTEXTILE FABRIC REINFORCED WITH NETTING SHALL BE A MINIMUM SIZE OF 1-1/8" x 1-1/8" DIA. OR HICKORY.
- ALTERNATIVES A AND B ARE EQUAL AND EITHER MAY BE USED.



**PLAN VIEW
TYPICAL APPLICATIONS OF SILT FENCE**



**SILT FENCE TIE BACK
(WHEN REQUIRED BY THE ENGINEER)**



**SILT FENCE DETAIL
NOT TO SCALE**

EXISTING SITE PLAN
RE: HUMANE SOCIETY
PART OF NW 1/4 SECTION 34, T7N, R19E
CITY OF WAUKESHA, WAUKESHA COUNTY, WI.

JAHNKE & JAHNKE ASSOCIATES INC.
PLANNERS & PROFESSIONAL ENGINEERS
711 W. MORELAND BLVD.-WAUKESHA, WI 53188
TEL.No.(262) 542-5797 FAX (262) 542-7698

SCALE: 1" = 30'	DATE: JANUARY 20, 2016
DRAWN BY: N.S.	CHECKED BY: G.E.M.
BOOK NO.: PEW 161	JOB: S8452
FILE NO.: PEWAUKEE	SHEET 1 OF 3

FILE NAME: S:\PROJECTS\S8452\DWG\S8452.dwg