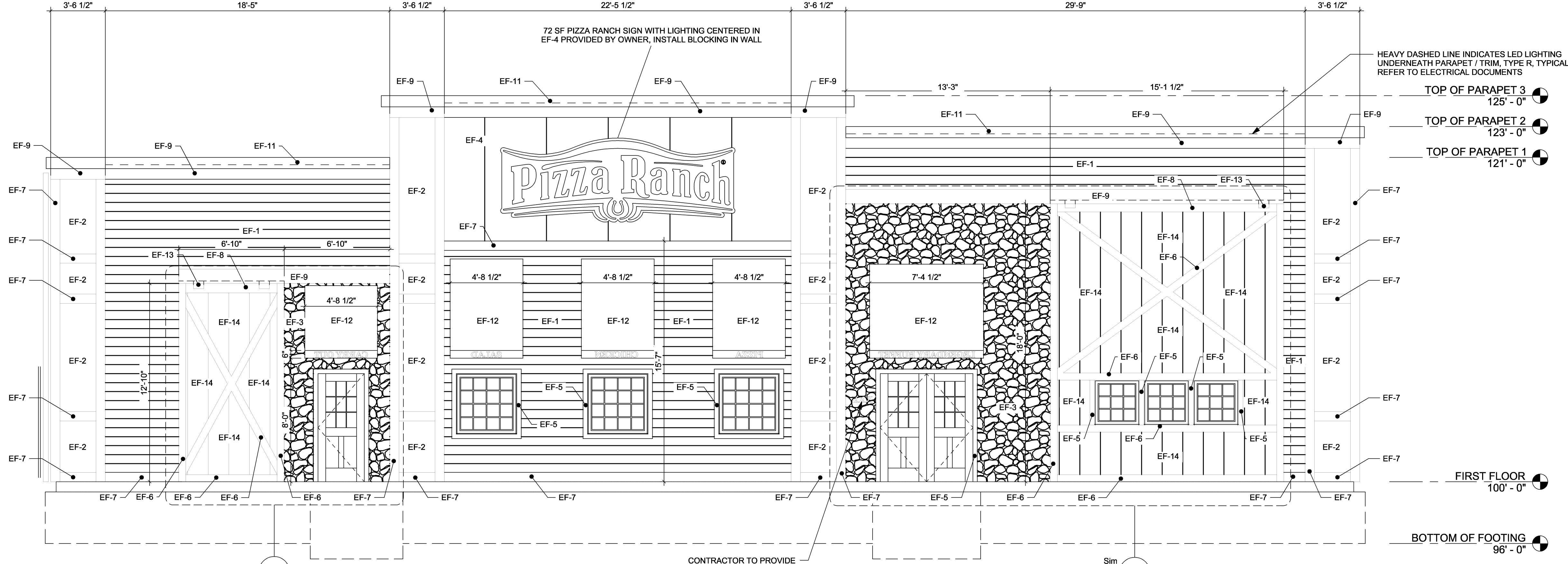


WALL MATERIAL SCHEDULE					
MARK	DESCRIPTION	MANUFACTURER	MODEL	COLOR	COMMENTS
EF-1	ENGINEERED WOOD COMPOSITE	LP BUILDING PRODUCTS	SMARTSIDE	FACTORY FINISHED MAPLE	7" LAP EXPOSURE
EF-2	ENGINEERED WOOD COMPOSITE	LP BUILDING PRODUCTS	SMARTSIDE	PAINT EP-2	SMOOTH, 9 x 4 BOARDS
EF-3	STONE	STONE CRAFT INDUSTRIES	FIELDSTONE	BUCKTOWN	4'-0" OC SEAMS
EF-4	ENGINEERED WOOD COMPOSITE	LP BUILDING PRODUCTS	SMARTSIDE	PAINT EP-4	4'-0" OC SEAMS
EF-12	CANOPY FABRIC	---	---	RUSTIC RED	STRETCH TIGHT OVER METAL FRAME, SUPPLIED BY OWNER/SIGN COMPANY, INSTALLED BY SIGN COMPANY
EF-14	ENGINEERED WOOD COMPOSITE	LP BUILDING PRODUCTS	SMARTSIDE	PAINT EP-2	16" SEAMS

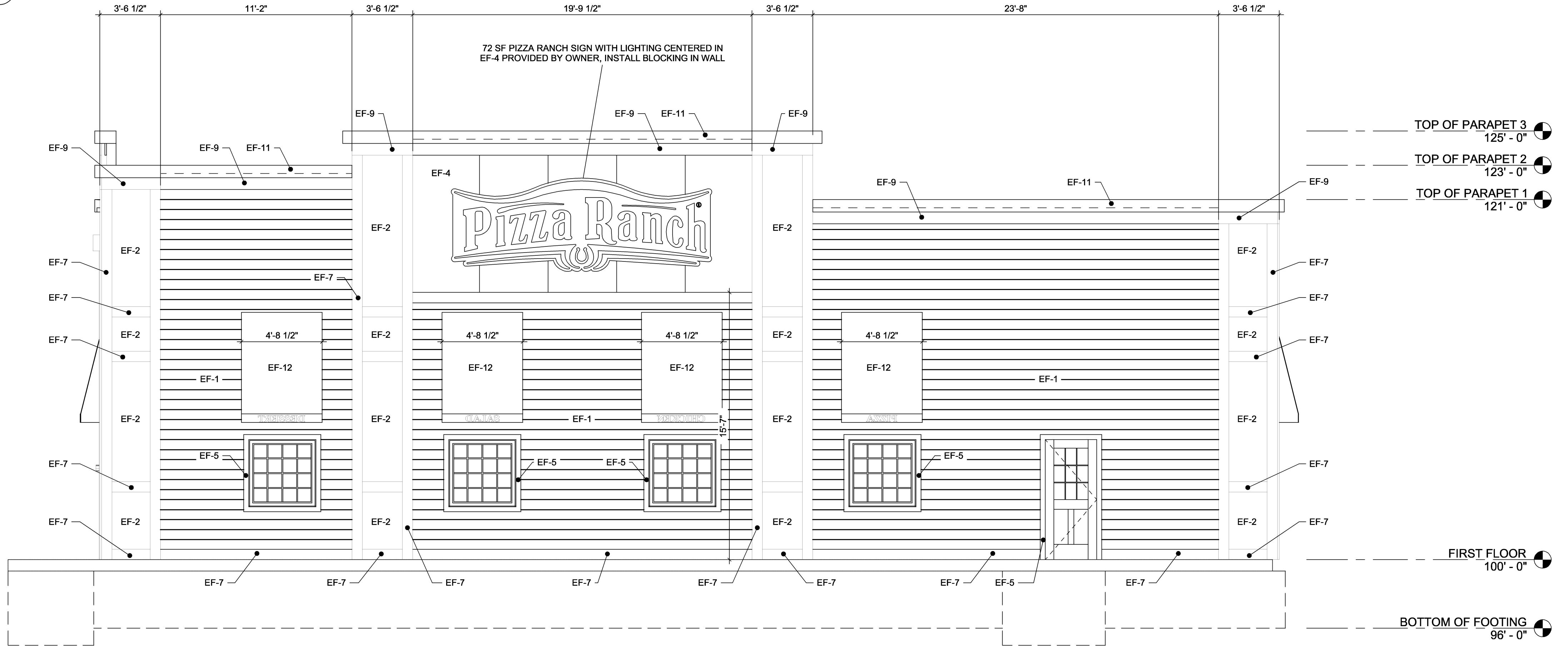
TRIM / ACCENT SCHEDULE					
MARK	MATERIAL TYPE	MANUFACTURER	MODEL	SIZE	COMMENTS
EF-5	ENGINEERED WOOD COMPOSITE	LP BUILDING PRODUCTS	SMARTSIDE	5/4" x 4"	PAINTED EP-1
EF-6	ENGINEERED WOOD COMPOSITE	LP BUILDING PRODUCTS	SMARTSIDE	5/4" x 6"	PAINTED EP-1
EF-7	ENGINEERED WOOD COMPOSITE	LP BUILDING PRODUCTS	SMARTSIDE	5/4" x 8"	PAINTED EP-1
EF-8	ENGINEERED WOOD COMPOSITE	LP BUILDING PRODUCTS	SMARTSIDE	5/4" x 10"	PAINTED EP-1
EF-9	ENGINEERED WOOD COMPOSITE	LP BUILDING PRODUCTS	SMARTSIDE	5/4" x 12"	PAINTED EP-1
EF-13	METAL PLATE	---	---	6" x 8"	PAINTED BLACK
EF-14	ENGINEERED WOOD COMPOSITE	LP BUILDING PRODUCTS	SMARTSIDE	PAINT EP-2	16" SEAMS

EXTERIOR PAINT SCHEDULE				
MARK	MANUFACTURER	FINISH	COLOR	COMMENTS
EP-1	SHERWIN WILLIAMS	FLAT	6083 SABLE	TYP AT EXTERIOR TRIM
EP-2	SHERWIN WILLIAMS	SATIN	6102 PORTABELLO	TYP AT EF-2
EP-3	SHERWIN WILLIAMS	FLAT	7592 CRABBY APPLE	NOT USED
EP-4	SHERWIN WILLIAMS	SATIN	6149 RELAXED KHAKI	TYP AT EF-4

CAP FLASHING SCHEDULE				
MARK	MANUFACTURER	MODEL/TYPE	COLOR	COMMENTS
EF-11	UNA CLAD	SMOOTH	MEDIUM BRONZE	

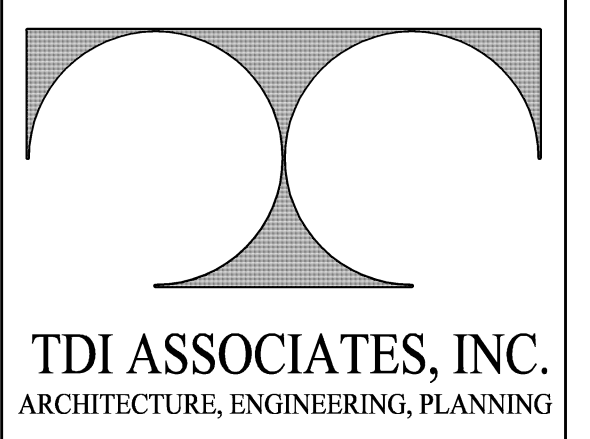


1 SOUTH EXTERIOR ELEVATION
1/4" = 1'-0"



2 EAST EXTERIOR ELEVATION
1/4" = 1'-0"

- SHEET NOTES**
- REFER TO ADDITIONAL NOTES AND REQUIREMENTS ON ALL OTHER DOCUMENTS AND OTHER DISCIPLINES' DOCUMENTS.
 - ALL HORIZONTAL TRANSITIONS BETWEEN DIFFERENT MATERIALS SHALL BE FLASHED CONTINUOUS FROM UP BEHIND TO UNDER UPPER MATERIAL AND EXTEND OVER TO EXTERIOR FACE OF LOWER MATERIAL.
 - ALL RETURNS OR BLIND ELEVATIONS NOT SHOWN SHALL BE SIMILAR IN MATERIAL AND MAKEUP TO ADJACENT CONDITIONS OR OTHER SIMILAR CONDITIONS.
 - SEAL ALL TRANSITIONS, CONTROL AND EXPANSION JOINTS AT ALL EXTERIOR MATERIALS.
 - INSULATE AND SEAL TO ENSURE ADEQUATE AIR INFILTRATION BARRIER AROUND ALL EXTERIOR PENETRATIONS TO PREVENT WATER AND SPRINKLER PIPE FREEZING.
 - PROVIDE POWER TO ALL BUILDING MOUNTED SIGNS. PROVIDE EXTERIOR LED LIGHTING ON PARAPET. CONTACT JUSTIN MULDER (1-800-321-3401) FOR LOCATIONS.



N8 W22350 JOHNSON DRIVE, SUITE B4
WAUKESHA, WISCONSIN 53186
PHONE 262-409-2530 FAX 262-409-2531

PIZZA RANCH
 FLEETFOOT DRIVE
 WAUKESHA, WISCONSIN

TDI ASSOCIATES, INC
All Rights Reserved
OWNERSHIP OF DOCUMENTS
This document, and the ideas and design incorporated herein, as an instrument of professional service, is the sole property of TDI Associates, Inc., and is not to be used in whole or in part for any other project or purpose without the expressed written authorization of TDI Associates, Inc.

Sheet Title
Exterior Elevations

Issued For: _____ Date: _____

Date: 7-10-2017

Job NO.: 15383

Drawn By: _____

Sheet No. _____

A2-11

