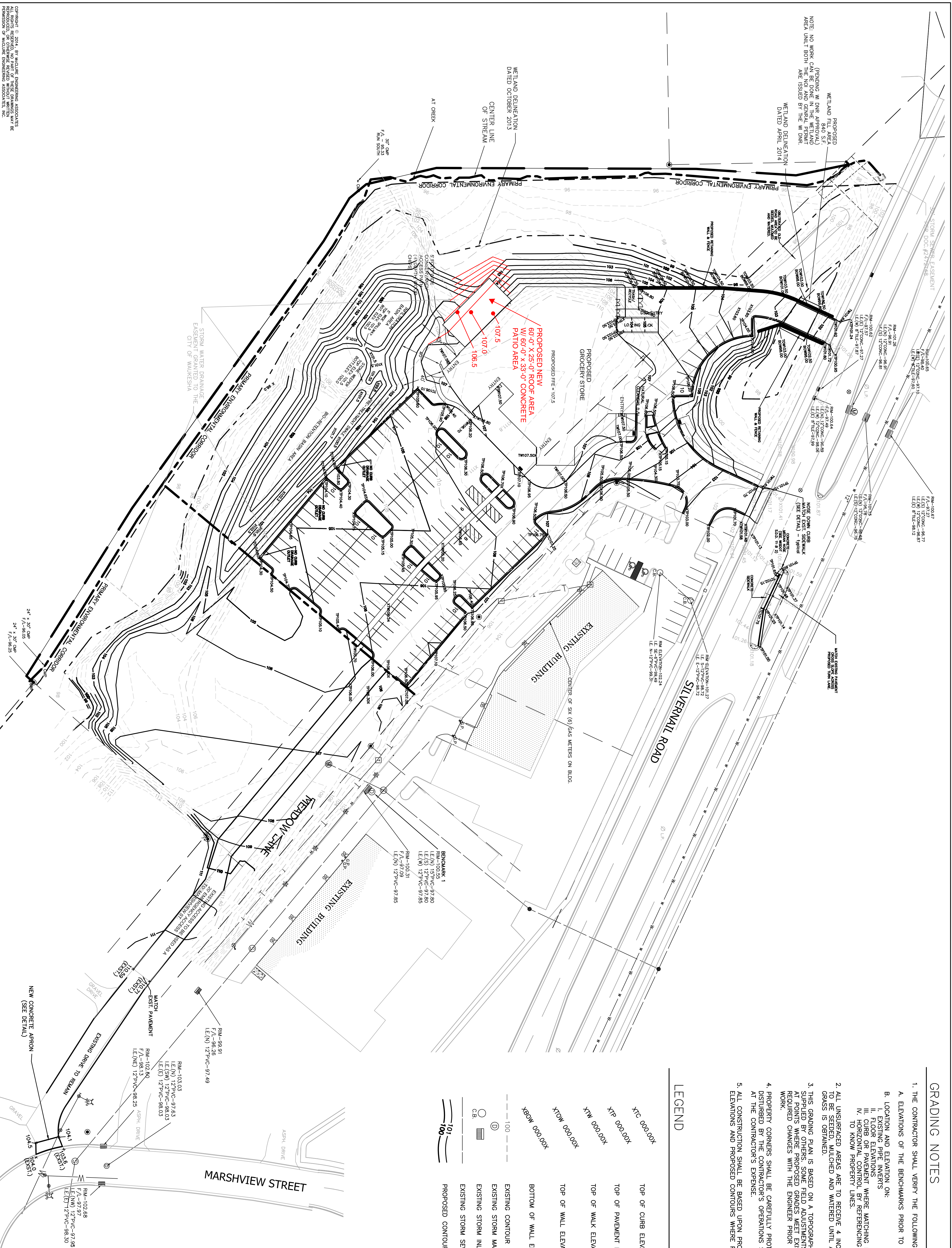


GRADING NOTES

1. THE CONTRACTOR SHALL VERIFY THE FOLLOWING:
 - A. ELEVATIONS OF THE BENCHMARKS PRIOR TO COMMENCING WORK.
 - B. LOCATION AND ELEVATION ON:
 - i. EXISTING PIPE INVERTS
 - ii. FLOOR ELEVATIONS
 - iii. CURB OR PAVEMENT WHERE MATCHING INTO EXISTING HORIZONTAL CONTROL BY REFERENCING SHOWN COORDINATES TO KNOW PROPERTY LINES.
2. ALL UNSURFACED AREAS ARE TO RECEIVE 4 INCHES OF TOPSOIL AND GRASS TO BE SEEDING, MULCHED AND WATERED UNTIL A HEALTHY STRAND OF GRASS IS OBTAINED.
3. THIS GRADING PLAN IS BASED ON A TOPOGRAPHIC SURVEY DATA SUPPLIED BY OTHERS. SOME FIELD ADJUSTMENTS MAY BE NECESSARY AT POINTS WHERE PROPOSED GRADES MEET EXISTING. REVIEW ANY REQUIRED CHANGES WITH THE ENGINEER PRIOR TO CONSTRUCTION OF WORK.
4. PROPERTY CORNERS SHALL BE CAREFULLY PROTECTED. MONUMENTS DISTURBED BY THE CONTRACTOR'S OPERATIONS SHALL BE REPLACED AT THE CONTRACTOR'S EXPENSE.
5. ALL CONSTRUCTION SHALL BE BASED UPON PROPOSED SPOT ELEVATIONS AND PROPOSED CONTOURS WHERE PROVIDED.

LEGEND

- X/C 000.00X TOP OF CURB ELEVATION
- X/P 000.00X TOP OF PAVEMENT ELEVATION
- X/W 000.00X TOP OF WALK ELEVATION
- X/TW 000.00X TOP OF WALL ELEVATION
- X/BW 000.00X BOTTOM OF WALL ELEVATION
- 100 --- EXISTING CONTOUR
- 101 --- EXISTING STORM MANHOLE
- EXISTING STORM INLET
- EXISTING STORM SEWER
- 101 --- PROPOSED CONTOUR



811
Know what's below.
Call before you dig.

NORTH

Scale in Feet
0 40 80

REVISIONS		
NO.	ITEM	DATE
1	REVISED PER WAUKESHA PUBLIC WORKS DEPT COMMENTS	6-23-2014
2	REVISED PER WAUKESHA COMMENTS	8-29-2014
3	REVISED PER WAUKESHA COMMENTS	9-11-2014

PLOTTING SCALE: **1" = 40'**

DESIGNED BY: **KCH**

DRAWN BY: **JBB**

CHECKED BY: **HMD**

DATE: **MAY 28, 2014**

McClure
Engineering Associates, Inc.

5417 North 118th Court
Milwaukee, Wisconsin 53225
(414) 616-4880 FAX (414) 616-4885

GRADING AND DRAINAGE PLAN
GOOD HARVEST MARKET II, LLC

1850 MEADOW LANE 262-544-9380 WAUKESHA, WI.

FILE NAME: \\Storage-0571\cjesto1\Land Projects 2006-Original\C\1435\dwg\13025\BOND\DRR\08-15-13-025

Copyright © 2014, by McClure Engineering Associates, Inc. All rights reserved. No part of these drawings may be reproduced, stored in a retrieval system, or transmitted in any form or by any means, electronic, mechanical, photocopying, recording, or by any information storage and retrieval system, without the prior written permission of McClure Engineering Associates, Inc.