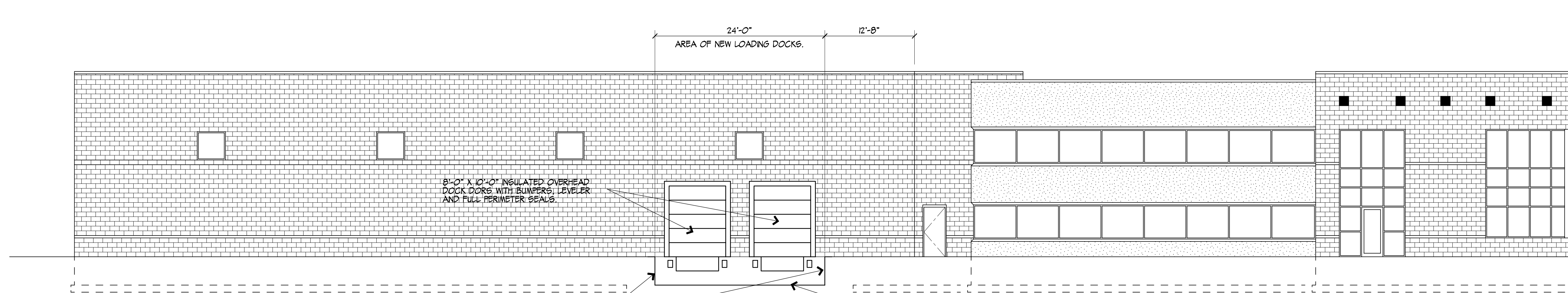


BREAK LINE FOR PARTIAL ELEVATION

EXISTING PARTIAL WEST ELEVATION

1/8" = 1'-0" (1/16" = 1'-0" FOR 11" X 17" PAPER SIZE)



BREAK LINE FOR PARTIAL ELEVATION

8'-0" X 10'-0" INSULATED OVERHEAD DOCK DOORS WITH RUNNERS, LEVELER AND FULL PERIMETER SEALS.

NEW 12" THICK CONCRETE RETAINING WALLS ON EACH SIDE OF DOCK AREA AS NEEDED TO MAINTAIN EXISTING GRADES AND POSITIVE DRAINAGE.

STEP EXISTING FOOTING TO MAINTAIN 48" MINIMUM FROST PROTECTION.

GRADE AT LOADING DOCKS IS 48" BELOW EXISTING FLOOR LINE ELEVATION.

PROPOSED PARTIAL WEST ELEVATION

1/8" = 1'-0" (1/16" = 1'-0" FOR 11" X 17" PAPER SIZE)

REVISIONS

STAMP

PAUL MEIER INC.
 1456 SOUTH 76TH STREET
 WEST ALLIS, WISCONSIN 53214
 PHONE : (414) 255-7458

PROPOSED LOADING DOCKS FOR :
 CORPORATE DESIGN INTERIORS
 171 PARAMOUNT COURT
 WAUKESHA, WI.

DRAWN BY
 P.M.M. - P.E.

DATE
 FEBRUARY 9, 2015

SCALE
 AS NOTED

JOB NUMBER
 2015-10

SHEET

