

FINAL ENGINEERING PLANS

FOR

McDONALD'S RESTAURANT

2340 E. MORELAND BOULEVARD WAUKESHA, WI WAUKESHA COUNTY SITE CODE: 048-0107

BENCHMARK / CONTROL

SOURCE: BENCHMARKS ESTABLISH VIA TRIMBLE VRS NETWORK. DATUM IS NAVD83, GROUND SCALE FACTOR: 1.0000843019

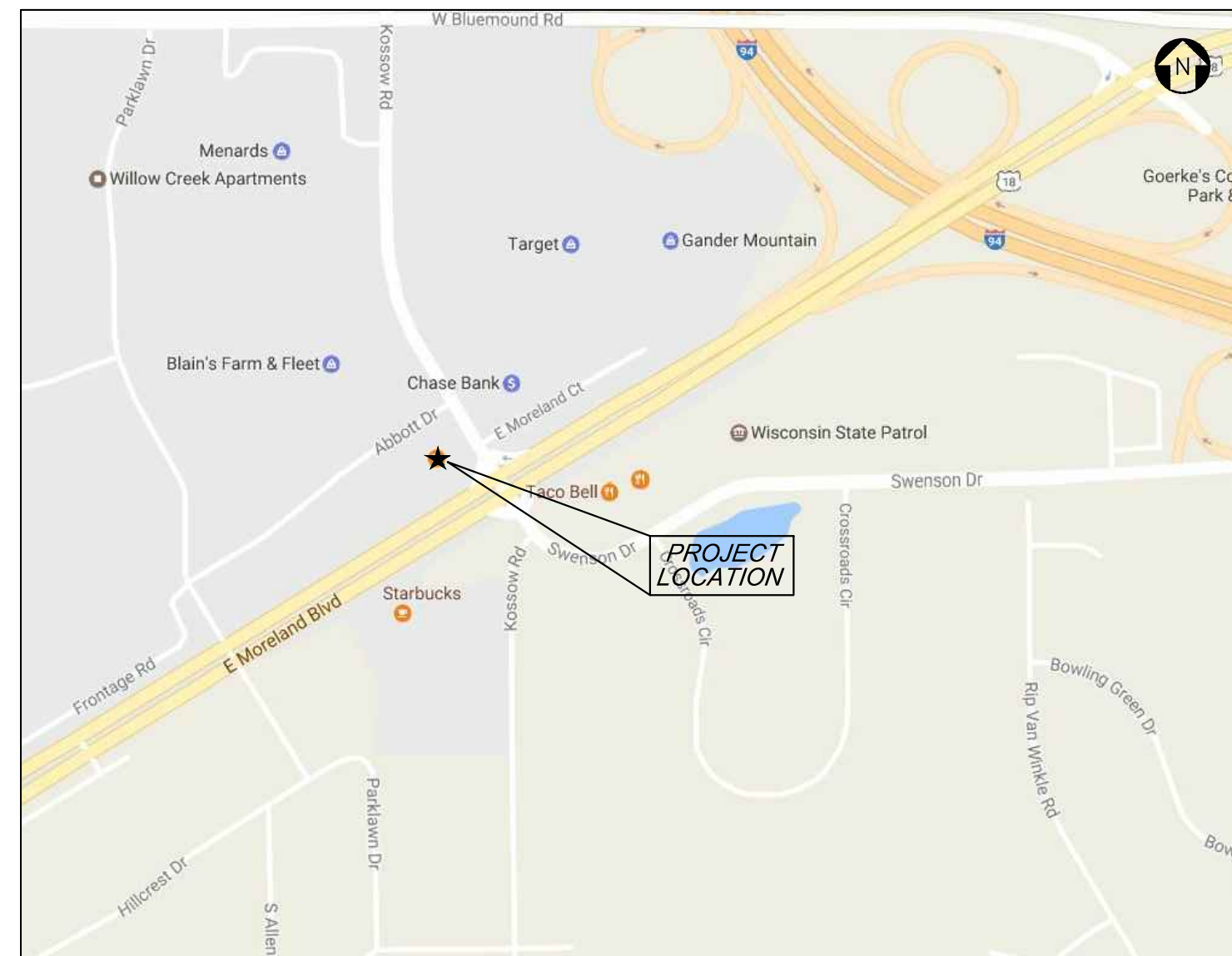
SITE:

STATION DESIGNATION: SBM #1
ESTABLISHED BY: V3 COMPANIES
DATE: 11/27/12

ELEVATION: 895.99 (MEASURED)
DATUM: NAVD83
DESCRIPTION: CUT SQUARE AT NORTHEAST CORNER OF COMED TRANSFORMER BASE AT NORTHEAST CORNER OF SITE.

STATION DESIGNATION: SBM #2
ESTABLISHED BY: V3 COMPANIES
DATE: 11/27/12

ELEVATION: 897.66 (MEASURED)
DATUM: NAVD83
DESCRIPTION: NORTHWEST FLANGE BOLT OF FIRST HYDRANT EAST OF KOSSOW RD. ON THE FRONTAGE ROAD.



LOCATION MAP
NO SCALE

DEVELOPER

McDonald's USA, LLC
711 Jorie Boulevard, 3rd Floor
Oak Brook, Illinois 60523
630 251 0445
Contact: Dawn Bourseau

THESE PLANS AND SPECIFICATIONS ARE THE PROPERTY OF McDONALD'S CORPORATION AND SHALL NOT BE REPRODUCED WITHOUT THEIR WRITTEN PERMISSION.

INDEX OF DRAWINGS

DWG. NO.	DESCRIPTION	REVISIONS					
		1	2	3	4	5	6
C-0.0	TITLE SHEET						
C-2.0	EROSION CONTROL PLAN						
C-2.1	EROSION CONTROL DETAILS						
C-3.0	SITE PLAN						
C-3.1	LAYOUT PLAN						
C-3.2	SIGNAGE PLAN						
C-4.0	GRADING PLAN						
C-5.0	UTILITY PLAN						
C-8.0	PHOTOMETRIC PLAN						
L-1.0	LANDSCAPE PLANS						

PROJECT TEAM	
ARCHITECT	McDONALD'S CORPORATION 1 McDONALD'S PLAZA OAK BROOK, ILLINOIS 60523 CONTACT: TERA O'MALLEY
LANDSCAPE ARCHITECT	DANIEL WEINBACH & PARTNERS, LTD. 53 WEST JACKSON BOULEVARD, SUITE 250 CHICAGO, ILLINOIS 60604 312 427 2888 CONTACT: BRAD MEYERHOFF
ENGINEER	V3 COMPANIES 7325 JANES AVENUE WOODRIDGE, ILLINOIS 60517 630 724 9200 CONTACT: ANDREW UTTAN, P.E., LEED AP
SURVEYOR	V3 COMPANIES 7325 JANES AVENUE WOODRIDGE, ILLINOIS 60517 630 724 9200 CONTACT: CHUCK BARTOSZ, PLS
PHOTOMETRIC DESIGN	SECURITY LIGHTING DESIGN 1085 JOHNSON DRIVE BUFFALO GROVE, ILLINOIS 60089 847 279 0627 CONTACT: MARK WERTH
UTILITIES	
ELECTRIC	
WATER & SEWER	
GAS	
APPROVAL / REVIEW	

811 • (800) 242-8511
www.DiggersHotline.com

REV	DATE	DESCRIPTION	BY

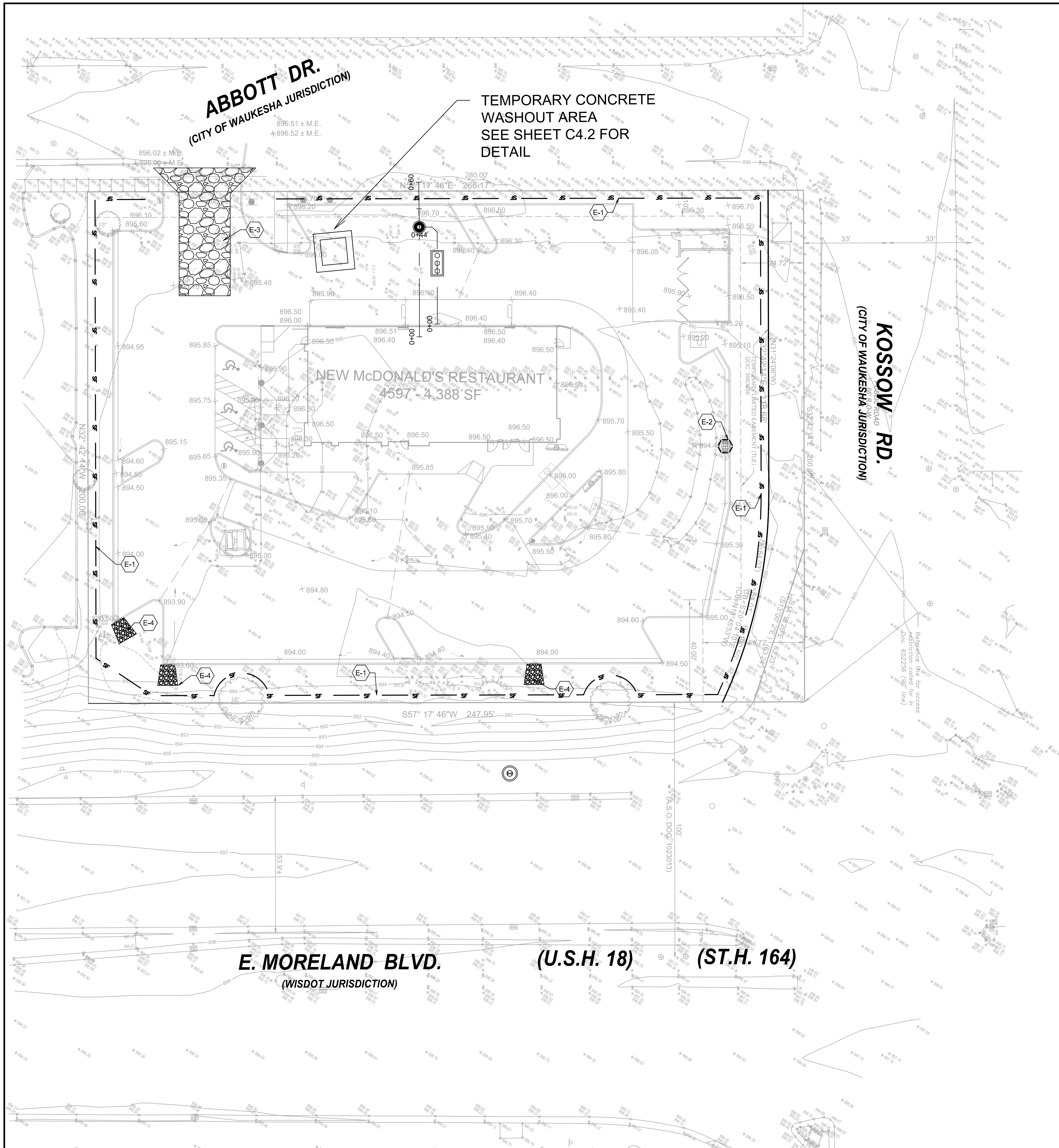
V3 Companies
7325 Janes Avenue
Woodridge, IL 60517
630.724.9200 phone
630.724.9202 fax
www.v3co.com

V3
Visio, Virtute, Virtute... The Vision to Transform with Excellence

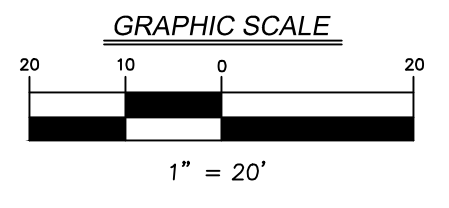
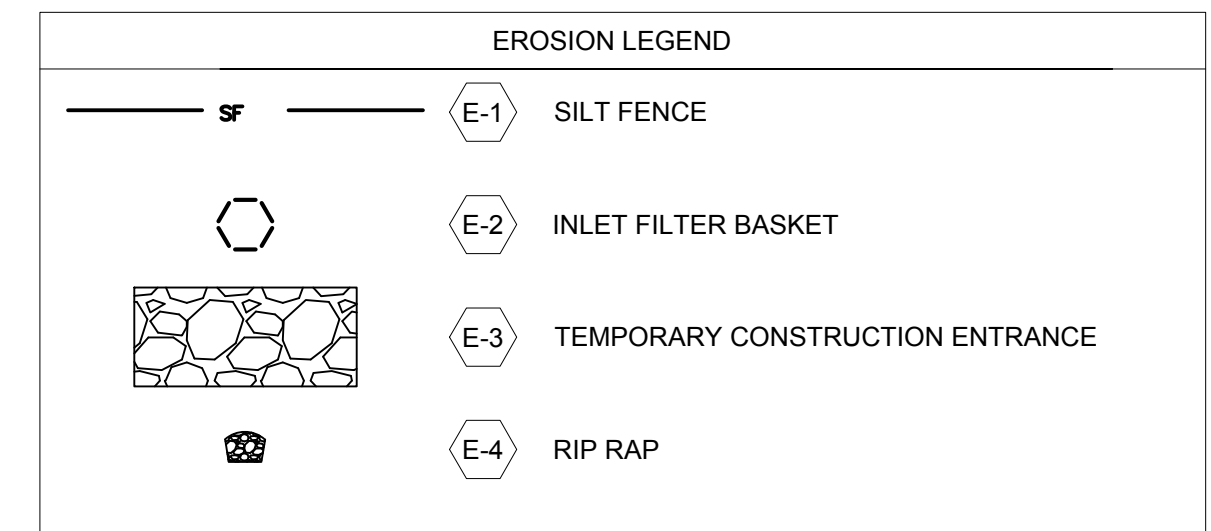
PREPARED FOR
McDonald's USA, LLC

These drawings and specifications are the confidential and proprietary property of McDonald's USA, LLC and shall not be copied or reproduced for use on this specific site in conjunction with its issue date and are not suitable for use on a different site or at a later time. Use of the services of properly licensed architects and engineers. Reproduction of the contract documents for reuse on another project is not authorized.

DRAWN BY JREI	STD ISSUE DATE 01-19-17	REVIEWED BY JWVG	DATE ISSUED 01-19-17
TITLE TITLE SHEET		DESCRIPTION MCDONALD'S - WAUKESHA, WI	
SHEET NO. C-0.0	SITE ADDRESS 2340 E. MORELAND BLVD., WAUKESHA, WI	SITE ID 048-0107	TITLE SHEET

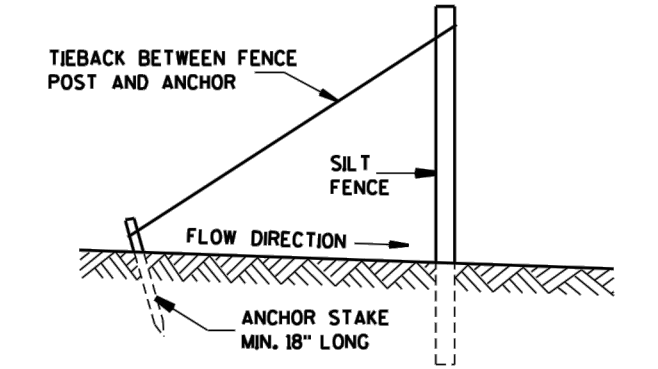


- EROSION CONTROL NOTES:**
- CONTRACTOR TO INSTALL CONSTRUCTION ENTRANCE PRIOR TO COMMENCEMENT OF WORK.
 - CONTRACTOR TO INSTALL SILT FENCE PRIOR TO COMMENCEMENT OF ANY EARTHWORK. CONTRACTOR TO MAINTAIN SILT FENCE AS SHOWN AND INSTALL ADDITIONAL SILT FENCE WHEREVER NECESSARY THROUGHOUT CONSTRUCTION ACTIVITIES TO MINIMIZE SOIL EROSION.
 - CONTRACTOR TO INSTALL INLET PROTECTION ON ALL OPEN LID STRUCTURES. SEE INLET PROTECTION DETAIL ON SHEET C-2.2.
 - EROSION CONTROL BLANKET (ROLL MAX ERONET S150 OR APPROVED EQUAL) SHALL BE PLACED ON ALL AREAS WITH SIDE SLOPES OF 4:1 OR GREATER, AND IN BOTTOM AND SIDE SLOPES OF SWALES WHERE NOTED.
 - ALL SEDIMENT AND EROSION CONTROL MEASURES IN AND AROUND THE PROPOSED IMPROVEMENTS ARE TO REMAIN IN PLACE AND TO BE MAINTAINED THROUGHOUT CONSTRUCTION ACTIVITIES UNTIL THE PROPOSED IMPROVEMENTS ARE COMPLETED AND THE SITE ADEQUATELY STABILIZED.
 - ACCESS DRIVES AND TRACKING: PROVIDE ACCESS DRIVE(S) FOR CONSTRUCTION VEHICLES THAT MINIMIZE TRACKING OF SOIL OFF SITE USING BMP(S) SUCH AS STONE TRACKING PADS, TIRE WASHING OR GRATES. MINIMIZE RUNOFF AND SEDIMENT FROM ADJACENT AREAS FROM FLOWING DOWN OR ERODING THE ACCESS DRIVE.
 - INLET PROTECTION: PROTECT INLETS TO STORM DRAINS, CULVERTS AND OTHER STORM WATER CONVEYANCE SYSTEMS FROM SILTATION UNTIL THE SITE IS STABILIZED.
 - SITE DEWATERING: TREAT PUMPED WATER TO REMOVE SEDIMENT PRIOR TO DISCHARGE FROM THE SITE, USING BMP(S) SUCH AS SEDIMENT BASINS AND PORTABLE SEDIMENT TANKS.
 - DUST CONTROL: PREVENT EXCESSIVE DUST FROM LEAVING THE CONSTRUCTION SITE THROUGH CONSTRUCTION PHASING AND TIMELY STABILIZATION OR THE USE OF BMP(S) SUCH AS SITE WATERING AND MULCH - ESPECIALLY WITH VERY DRY OR FINE SANDY SOILS.
 - SEDIMENT CLEANUP: BY THE END OF EACH WORKDAY, CLEAN UP ALL OFF-SITE SEDIMENT DEPOSITS OR TRACKED SOIL THAT ORIGINATED FROM THE PERMITTED SITE. FLUSHING SHALL NOT BE ALLOWED UNLESS RUNOFF IS TREATED BEFORE DISCHARGE FROM THE SITE.
 - FINAL SITE STABILIZATION: ALL PREVIOUS CROPLAND AREAS WHERE LAND DISTURBING ACTIVITIES WILL NOT BE OCCURRING UNDER THE PROPOSED GRADING PLANS SHALL BE STABILIZED UPON PERMIT ISSUANCE. STABILIZE ALL OTHER DISTURBED AREAS WITHIN 7 DAYS OF FINAL GRADING AND TOPSOIL APPLICATION. LARGE SITES SHALL BE TREATED IN STAGES AS FINAL GRADING IS COMPLETED IN EACH STAGE. ANY SOIL EROSION THAT OCCURS AFTER FINAL GRADING OR THE APPLICATION OF STABILIZATION MEASURES MUST BE REPAIRED AND THE STABILIZATION WORK REDONE.
 - TEMPORARY SITE STABILIZATION: ANY DISTURBED SITE THAT REMAINS INACTIVE FOR GREATER THAN 7 DAYS SHALL BE STABILIZED WITH TEMPORARY STABILIZATION MEASURES SUCH AS SOIL TREATMENT, TEMPORARY SEEDING OR MULCHING. FOR PURPOSES OF THIS SUBSECTION, "INACTIVE" MEANS THAT NO SITE GRADING, LANDSCAPING OR UTILITY WORK IS OCCURRING ON THE SITE AND THAT PRECIPITATION EVENTS ARE NOT LIMITING THESE ACTIVITIES. FROZEN SOILS DO NOT EXCLUDE THE SITE FROM THIS REQUIREMENT.
 - FINAL SITE STABILIZATION INSTRUCTIONS FOR ALL OTHER DISTURBED AREAS, SHOWING AREAS TO BE STABILIZED IN ACRES, DEPTH OF APPLIED TOPSOIL, SEED TYPES, RATES AND METHODOLOGY, FERTILIZER, SOD OR EROSION MATTING SPECIFICATIONS, MAINTENANCE REQUIREMENTS UNTIL PLANTS ARE WELL ESTABLISHED, AND OTHER BMP(S) USED TO STABILIZE THE SITE.
 - EROSION CONTROL BLANKET (TENSAR S150BN OR APPROVED EQUAL) SHALL BE PLACED ON ALL AREAS WITH SIDE SLOPES OF 4:1 OR GREATER, AND IN THE BOTTOM AND SIDE SLOPES OF ALL SWALES.
 - THE CONTRACTOR SHALL INSTALL AND MAINTAIN ALL EROSION CONTROL MEASURES AS INDICATED ON THIS PLAN SHEET.
 - UNLESS OTHERWISE NOTED, ALL VEGETATIVE AND STRUCTURAL EROSION AND SEDIMENT CONTROL PRACTICES WILL BE CONSTRUCTED ACCORDING TO THE MINIMUM STANDARDS AND SPECIFICATIONS SET FORTH BY THE WISCONSIN DNR.

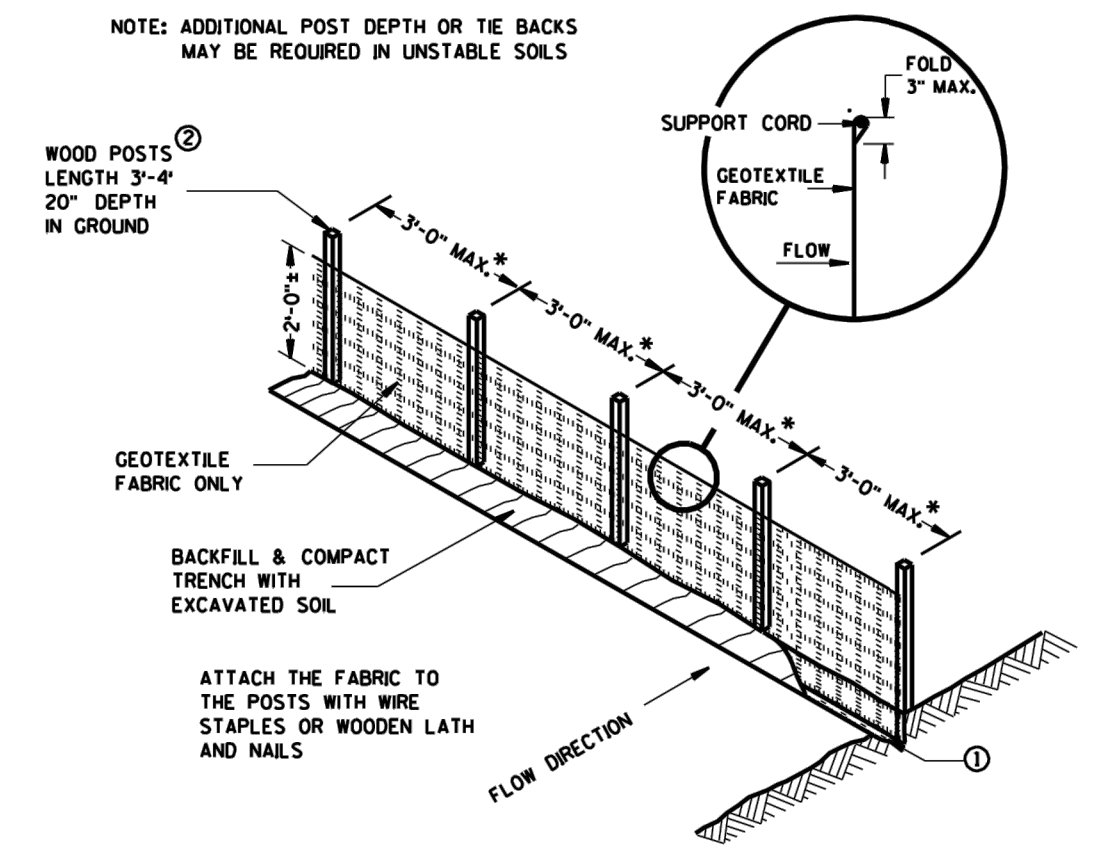


TITLE EROSION CONTROL PLAN	DATE 01-19-17	DRAWN BY JREI	SITE ADDRESS 2340 E. MORELAND BLVD., WAUKESHA, WI	BY
	DATE ISSUED 01-19-17			
SHEET NO. C-2.1	DATE 01-19-17	REVIEWED BY JWVG	PREPARED FOR M. McDonald's USA, LLC	DATE 01-19-17
EROSION CONTROL PLAN		<p>These drawings and specifications are the confidential and proprietary property of McDonald's USA, LLC and shall not be copied or reproduced for use on this specific site in conjunction with its issue date and are not suitable for use on a different site or at a later time. Use of the services of properly licensed architects and engineers. Reproduction of the contract documents for reuse on another project is not authorized.</p>		<p>V3 Companies 7325 Janes Avenue Woodridge, IL 60517 630.724.9200 phone 630.724.9202 fax www.v3co.com</p>
<p>06240.31A - EROSION CONTROL PLAN</p>				

- ### GENERAL NOTES
- TRENCH SHALL BE A MINIMUM OF 4" WIDE & 6" DEEP TO BURY AND ANCHOR THE GEOTEXTILE FABRIC. FOLD MATERIAL TO FIT TRENCH AND BACKFILL & COMPACT TRENCH WITH EXCAVATED SOIL.
 - WOOD POSTS SHALL BE A MINIMUM SIZE OF 1/2" X 1/2" OF OAK OR HICKORY.
 - CONSTRUCT SILT FENCE FROM A CONTINUOUS ROLL IF POSSIBLE BY CUTTING LENGTHS TO AVOID JOINTS. IF A JOINT IS NECESSARY USE ONE OF THE FOLLOWING TWO METHODS: TWIST METHOD -- OVERLAP THE END POSTS AND TWIST OR ROTATE, AT LEAST 90 DEGREES; HOOK METHOD -- HOOK THE END OF EACH SILT FENCE LENGTH.

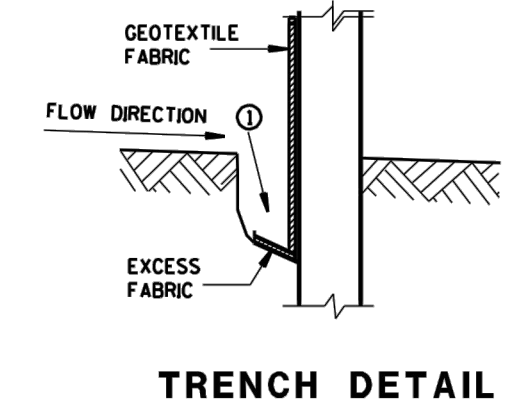


SILT FENCE TIE BACK
(WHEN ADDITIONAL SUPPORT REQUIRED)

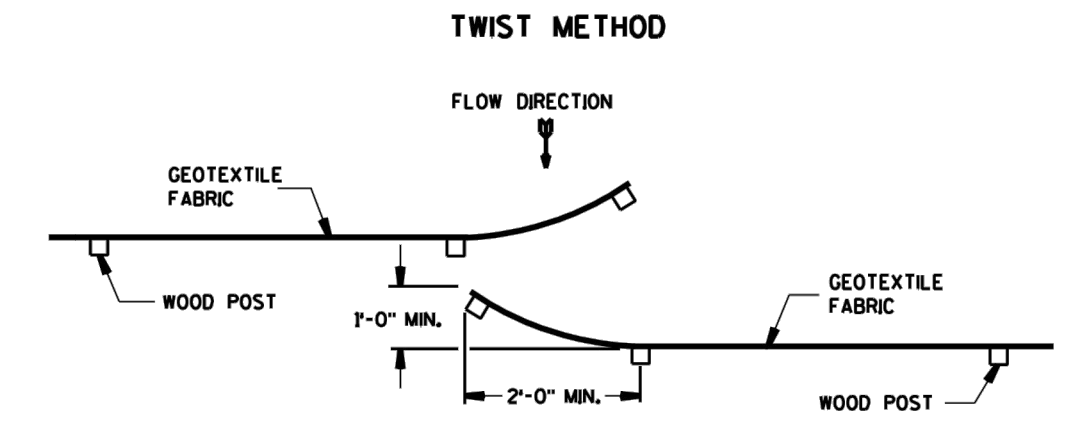


SILT FENCE

* NOTE: 8'-0" POST SPACING ALLOWED IF A WOVEN GEOTEXTILE FABRIC IS USED.



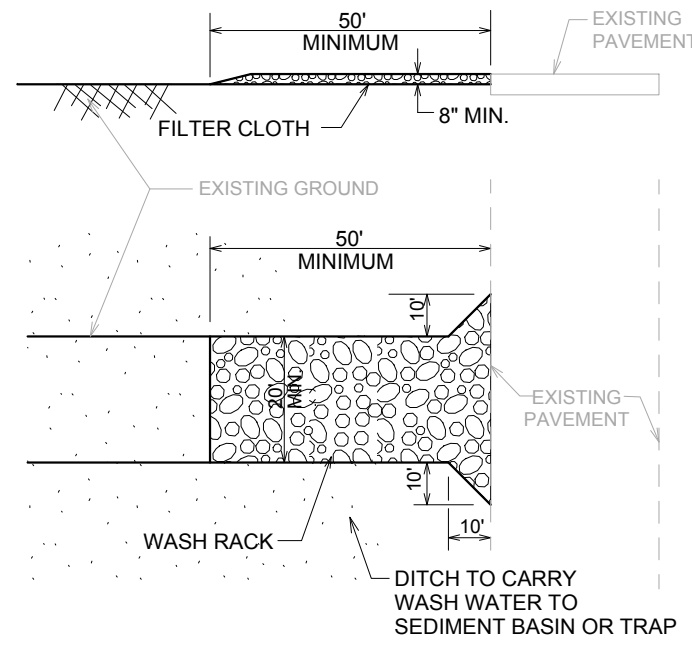
TRENCH DETAIL



JOINING TWO LENGTHS OF SILT FENCE

This drawing based on Wisconsin Department of Transportation Standard Detail Drawing 8 E 9-6.

SILT FENCE

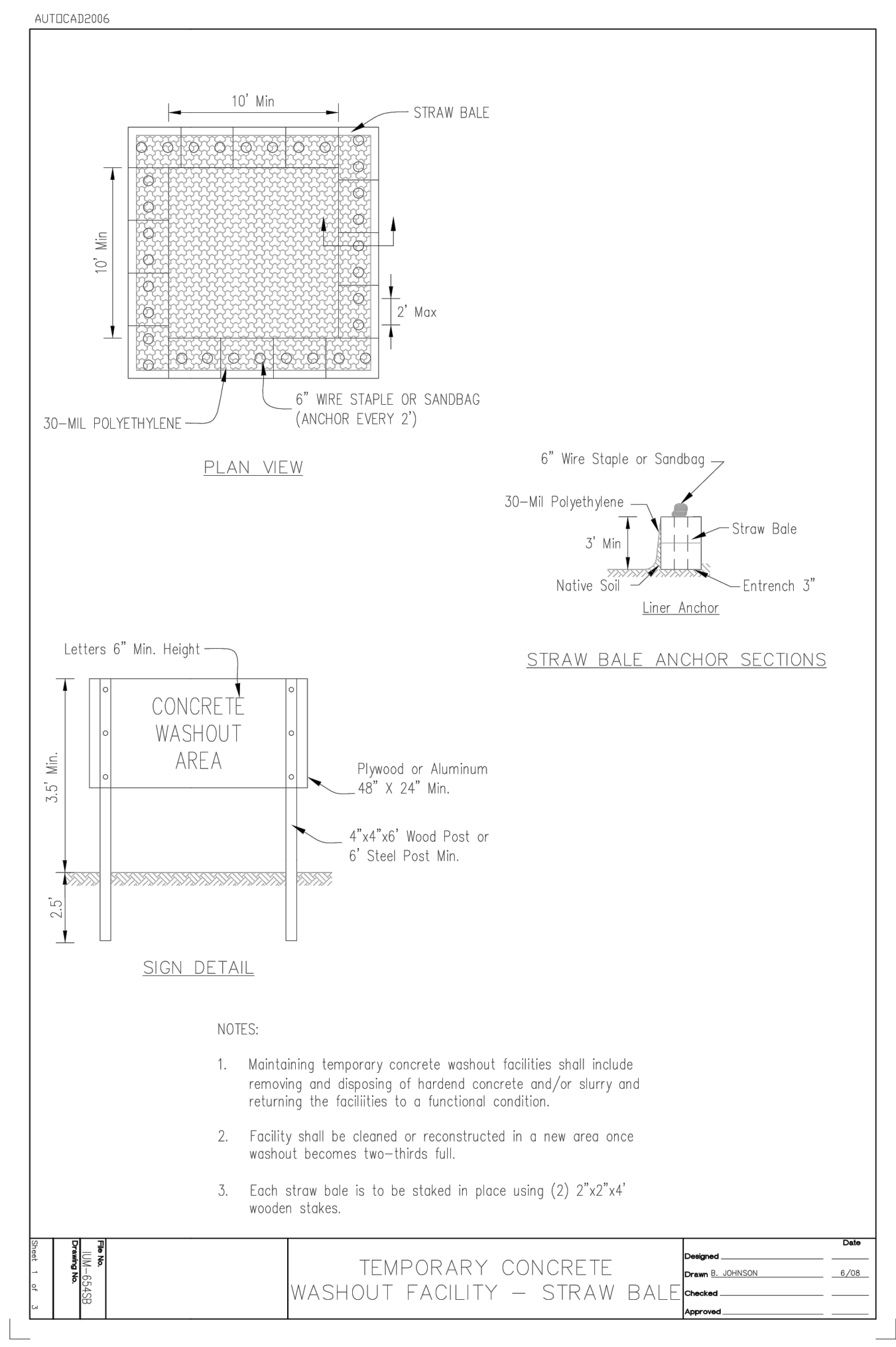


CONSTRUCTION ENTRANCE SPECIFICATIONS

- STONE SIZE - USE 2" STONE OR RECLAIMED OR RECYCLED CONCRETE EQUIVALENT.
- THICKNESS - NOT LESS THAN EIGHT (8) INCHES.
- FILTER CLOTH - SHALL BE PLACED OVER THE ENTIRE AREA PRIOR TO PLACING OF STONE.
- MAINTENANCE - THE ENTRANCE SHALL BE MAINTAINED IN A CONDITION WHICH WILL PREVENT TRACKING OR FLOWING OF SEDIMENT ONTO PUBLIC RIGHTS-OF-WAY. THIS MAY REQUIRE PERIODIC TOP DRESSING WITH ADDITIONAL STONE AS CONDITIONS DEMAND AND REPAIR AND/OR CLEANOUT OF ANY MEASURES USED TO TRAP SEDIMENT. ALL SEDIMENT SPILLED, DROPPED, SPILLED, DROPPED, WASHED OR TRACKED ONTO PUBLIC RIGHTS-OF-WAYS MUST BE REMOVED IMMEDIATELY.
- WASHING - WHEELS SHALL BE CLEANED TO REMOVE SEDIMENT PRIOR TO ENTRANCE ONTO PUBLIC RIGHT-OF-WAY. WHEN WASHING IS REQUIRED, IT SHALL BE DONE ON AN AREA STABILIZED WITH STONE AND WHICH DRAINS INTO AN APPROVED SEDIMENT TRAPPING DEVICE.
- PERIODIC INSPECTION AND NEEDED MAINTENANCE SHALL BE PROVIDED AFTER EACH RAIN.

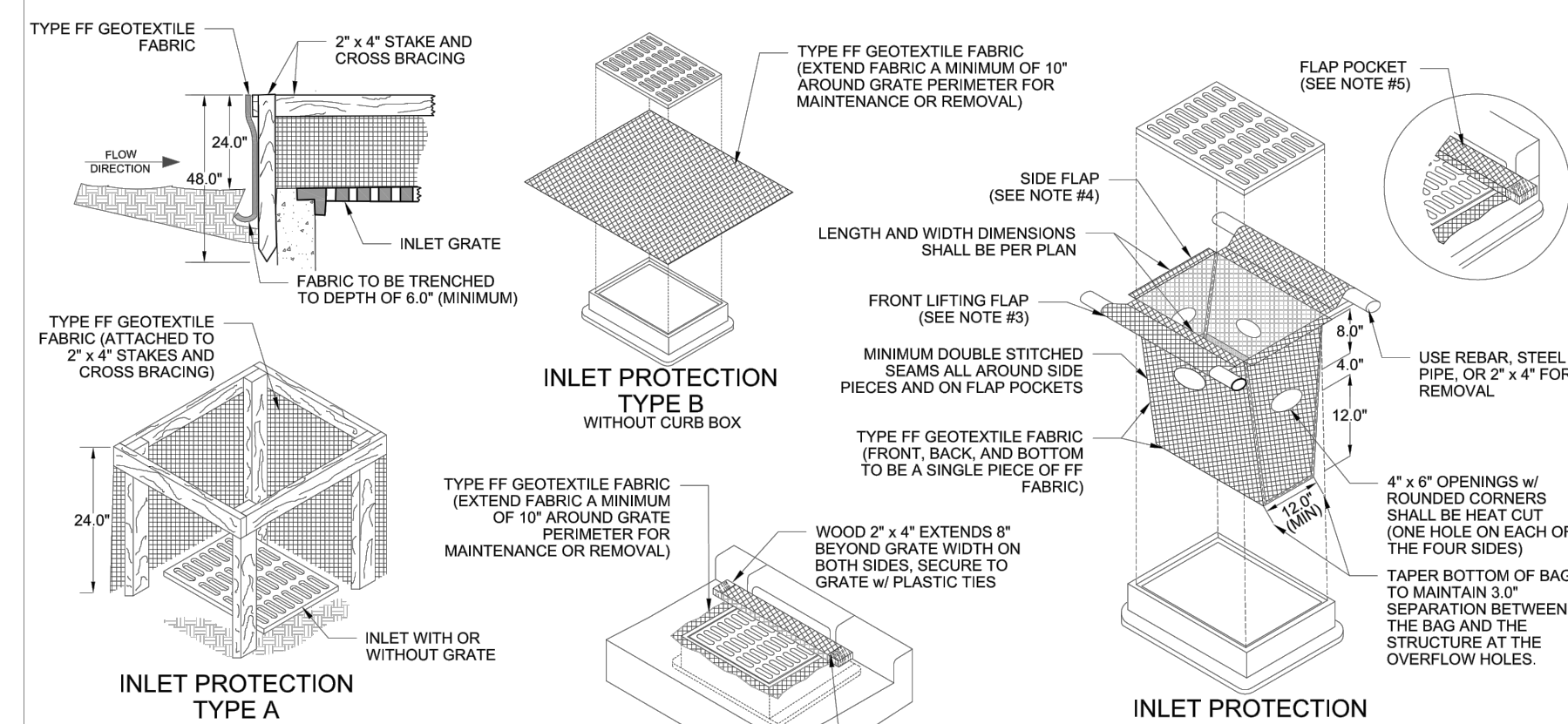
STABILIZED CONSTRUCTION ENTRANCE (TYPICAL)

E13

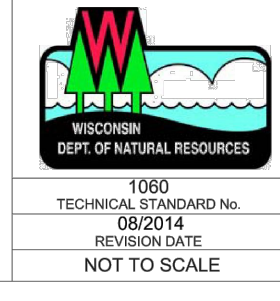


TEMPORARY CONCRETE WASHOUT FACILITY - STRAW BALE

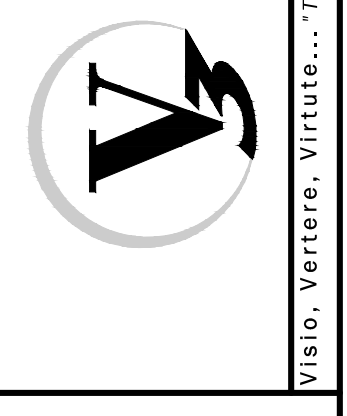
FIGURE 1. INLET PROTECTION TYPES A, B, C AND D



- NOTES:**
- TAPER BOTTOM OF BAG TO MAINTAIN THREE INCHES OF CLEARANCE BETWEEN THE BAG AND THE STRUCTURE, MEASURED FROM THE BOTTOM OF THE OVERFLOW OPENINGS TO THE STRUCTURE WALL.
 - GEOTEXTILE FABRIC TYPE FF FOR FLAPS, TOP AND BOTTOM OF OUTSIDE OF FILTER BAG. FRONT, BACK, AND BOTTOM OF FILTER BAG BEING ONE PIECE.
 - FRONT LIFTING FLAP IS TO BE USED WHEN REMOVING AND MAINTAINING FILTER BAG.
 - SIDE FLAPS SHALL BE A MAXIMUM OF TWO INCHES LONG. FOLD THE FABRIC OVER AND REINFORCE WITH MULTIPLE STITCHES.
 - FLAP POCKETS SHALL BE LARGE ENOUGH TO ACCEPT WOOD 2" x 4". THE REBAR, STEEL PIPE, OR WOOD SHALL BE INSTALLED IN THE REAR FLAP AND SHALL NOT BLOCK THE TOP HALF OF THE CURB FACE OPENING.
- MAINTENANCE NOTES:**
- WHEN REMOVING OR MAINTAINING INLET PROTECTION, CARE SHALL BE TAKEN SO THAT THE SEDIMENT TRAPPED IN THE FABRIC DOES NOT FALL INTO THE STRUCTURE. MATERIAL THAT HAS FALLEN INTO THE INLET SHALL BE IMMEDIATELY REMOVED.

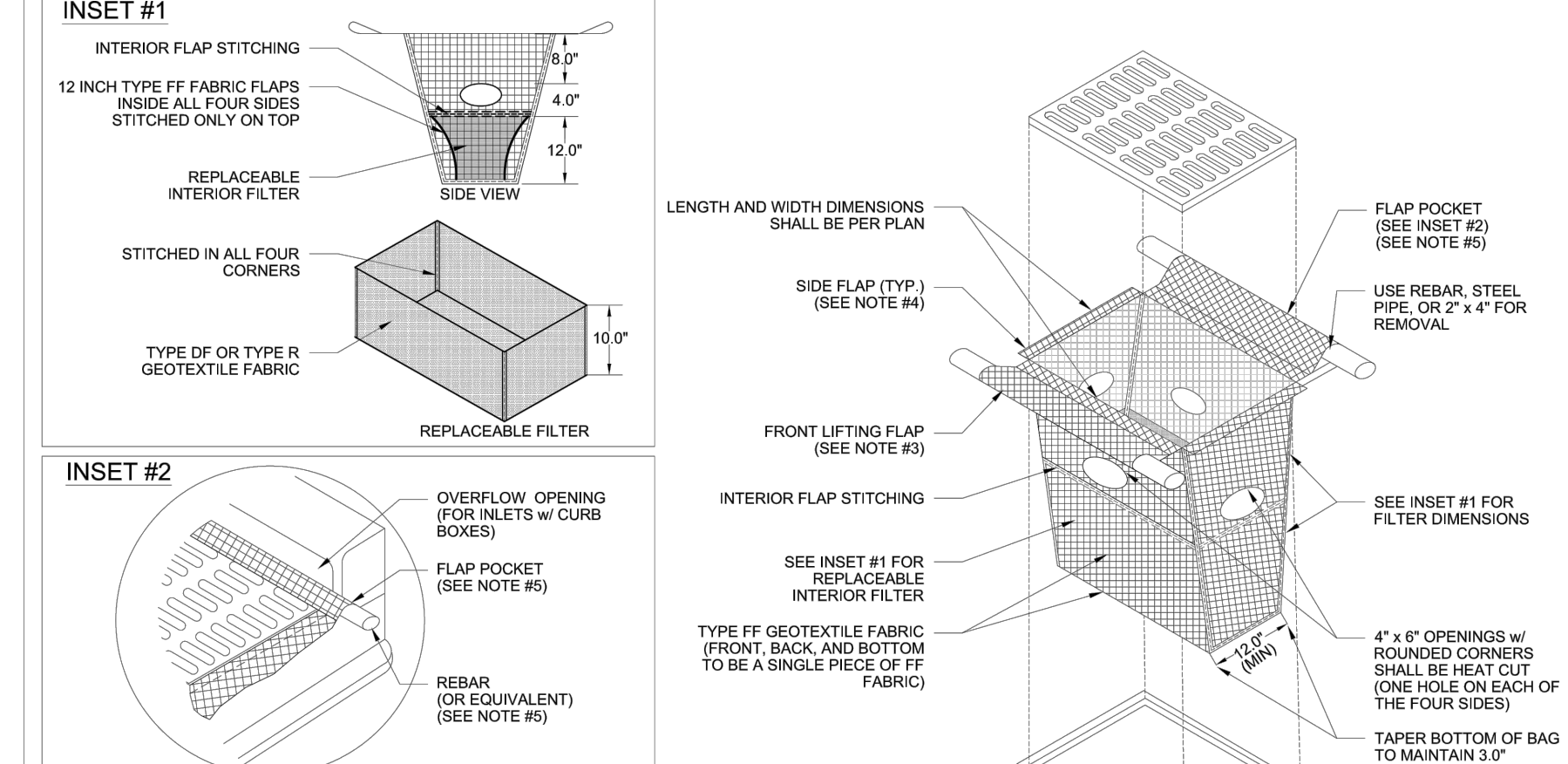


V3 Companies
7325 Janes Avenue
Woodridge, IL 60517
630.724.9200 phone
630.724.9202 fax
www.v3co.com



PREPARED BY:
M. McDonald's USA, LLC
These drawings and specifications are the confidential and proprietary property of McDonald's USA, LLC and shall not be copied or reproduced for use on this specific site in conjunction with its issue date and are not suitable for use on a different site or at a later time. Use of these drawings and specifications without the express written consent of the services of properly licensed architects and engineers. Reproduction of the contract documents for reuse on another project is not authorized.

FIGURE 2. INLET PROTECTION TYPE D-M



- NOTES:**
- TAPER BOTTOM OF BAG TO MAINTAIN THREE INCHES OF CLEARANCE BETWEEN THE BAG AND THE STRUCTURE, MEASURED FROM THE BOTTOM OF THE OVERFLOW OPENINGS TO THE STRUCTURE WALL.
 - GEOTEXTILE FABRIC TYPE FF FOR FLAPS, TOP AND BOTTOM OF OUTSIDE OF FILTER BAG. FRONT, BACK, AND BOTTOM OF FILTER BAG BEING ONE PIECE.
 - FRONT LIFTING FLAP IS TO BE USED WHEN REMOVING AND MAINTAINING FILTER BAG.
 - SIDE FLAPS SHALL BE A MAXIMUM OF TWO INCHES LONG. FOLD THE FABRIC OVER AND REINFORCE WITH MULTIPLE STITCHES.
 - FLAP POCKETS SHALL BE LARGE ENOUGH TO ACCEPT WOOD 2" x 4". THE REBAR, STEEL PIPE, OR WOOD SHALL BE INSTALLED IN THE REAR FLAP AND SHALL NOT BLOCK THE TOP HALF OF THE CURB FACE OPENING.
- MAINTENANCE NOTES:**
- WHEN REMOVING OR MAINTAINING INLET PROTECTION, CARE SHALL BE TAKEN SO THAT THE SEDIMENT TRAPPED IN THE FABRIC DOES NOT FALL INTO THE STRUCTURE. MATERIAL THAT HAS FALLEN INTO THE INLET SHALL BE IMMEDIATELY REMOVED.

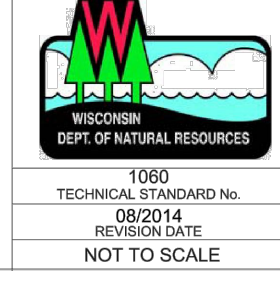
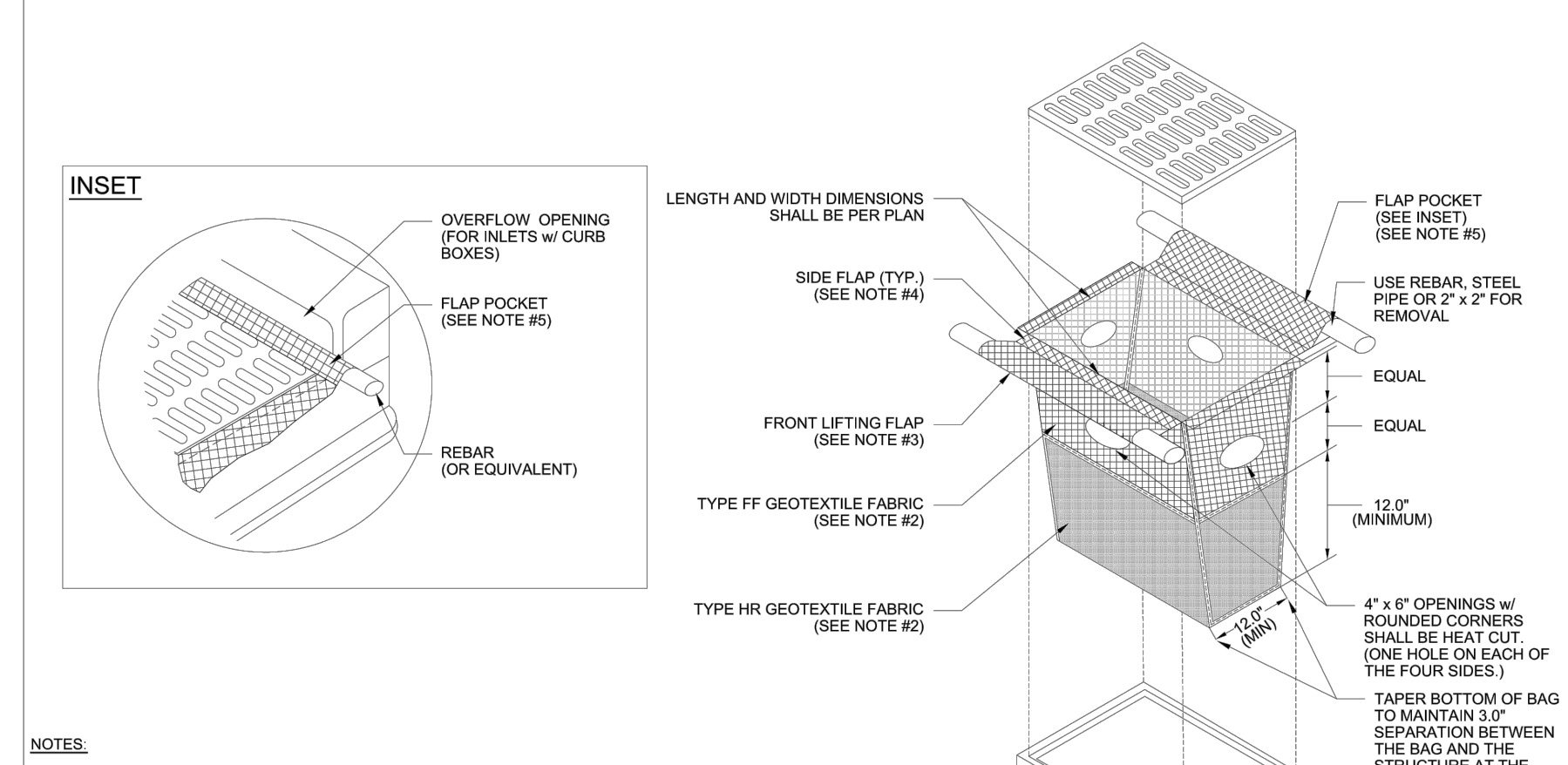
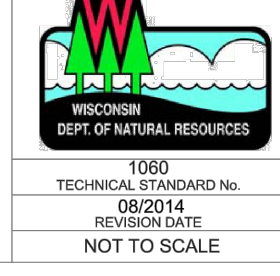


FIGURE 3. INLET PROTECTION TYPE D-HR



- NOTES:**
- TAPER BOTTOM OF BAG TO MAINTAIN THREE INCHES OF CLEARANCE BETWEEN THE BAG AND THE STRUCTURE, MEASURED FROM THE BOTTOM OF THE OVERFLOW OPENINGS TO THE STRUCTURE WALL.
 - GEOTEXTILE FABRIC, TYPE FF FOR FLAPS AND TOP HALF OF FILTER BAG. GEOTEXTILE FABRIC, TYPE HR FOR BOTTOM HALF OF FILTER BAG WITH FRONT, BACK, AND BOTTOM BEING ONE PIECE.
 - FRONT LIFTING FLAP IS TO BE USED WHEN REMOVING AND MAINTAINING FILTER BAG.
 - SIDE FLAPS SHALL BE A MAXIMUM OF TWO INCHES LONG. FOLD THE FABRIC OVER AND REINFORCE WITH MULTIPLE STITCHES.
 - FLAP POCKETS SHALL BE LARGE ENOUGH TO ACCEPT WOOD 2" x 2". THE REBAR, STEEL PIPE, OR WOOD SHALL BE INSTALLED IN THE REAR FLAP AND SHALL NOT BLOCK THE TOP HALF OF THE CURB FACE OPENING.
- MAINTENANCE NOTES:**
- WHEN REMOVING OR MAINTAINING INLET PROTECTION, CARE SHALL BE TAKEN SO THAT THE SEDIMENT TRAPPED IN THE FABRIC DOES NOT FALL INTO THE STRUCTURE. MATERIAL THAT HAS FALLEN INTO THE INLET SHALL BE IMMEDIATELY REMOVED.

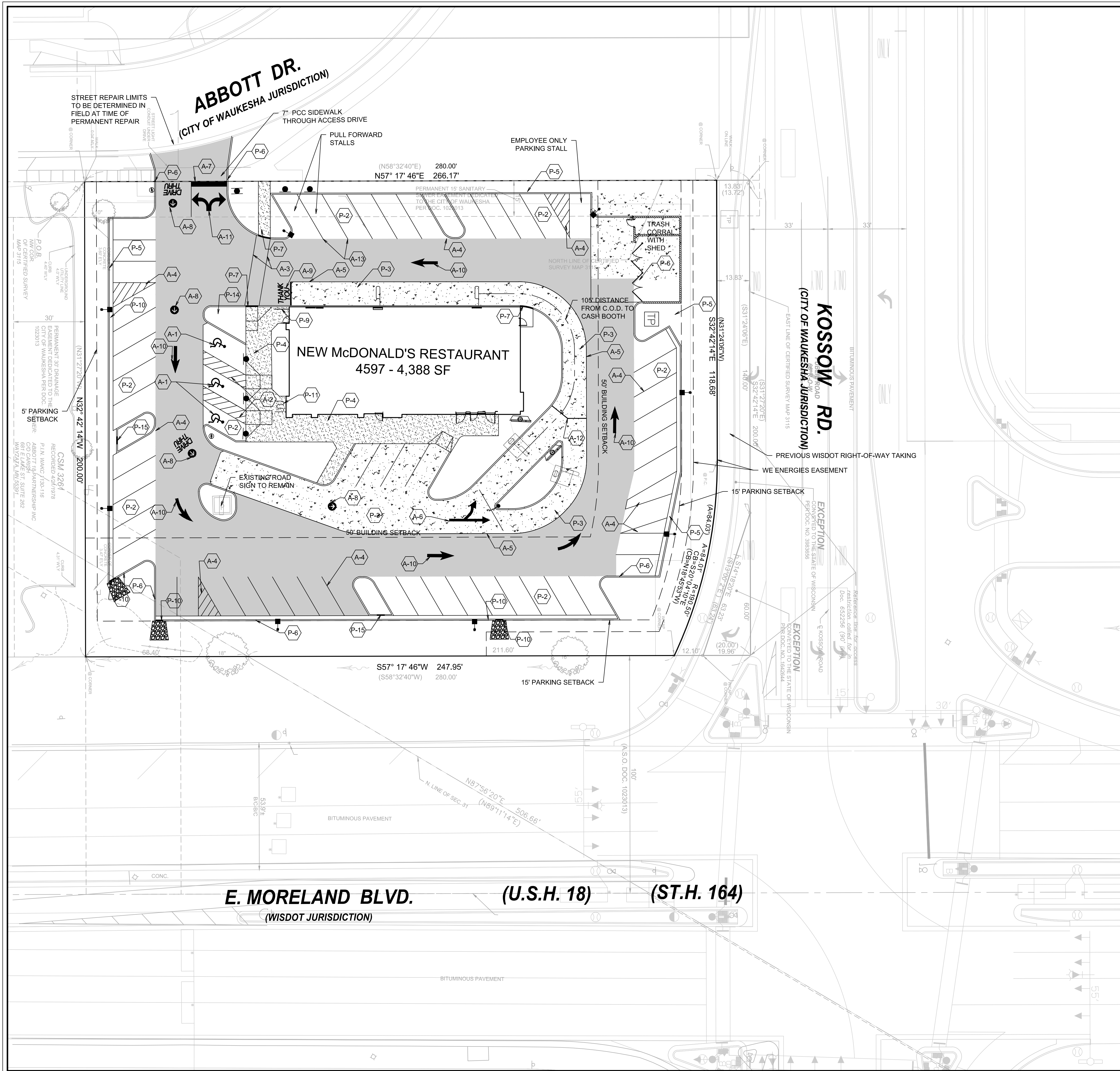


TITLE	DATE	BY	DESCRIPTION
EROSION CONTROL DETAILS	01-19-17	JWG	CDONALD'S - WAUKESHA, WI
EROSION CONTROL DETAILS	01-19-17	JWG	CDONALD'S - WAUKESHA, WI

DATE: 01-19-17
REVISION DATE: 01-19-17

SHEET NO. **C-2.2**
EROSION CONTROL DETAILS

048-0107
2340 E. MORELAND BLVD., WAUKESHA, WI



PAVING LEGEND

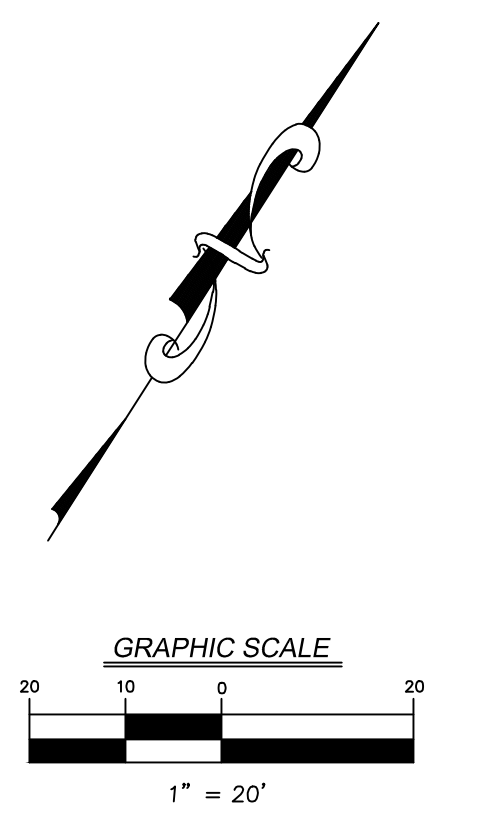
P-1	HEAVY BITUMINOUS PAVEMENT
P-2	STANDARD DUTY PAVEMENT
P-3	CONCRETE PAVEMENT
P-4	CONCRETE SIDEWALK

KEY	DESCRIPTION	STRIPING LEGEND
P-5	10" X 24" CONCRETE CURB	A-1 ADA ACCESSIBLE STALL WITH SYMBOL PER ADA REQUIREMENTS
P-6	6" CONCRETE BARRIER CURB	A-2 ACCESSIBLE AISLE - 4" YELLOW STRIPES @ 45°, 2' O.C.
P-7	DEPRESSED CONCRETE CURB	A-3 6" WIDE PEDESTRIAN ACCESS AISLE WITH 4" WHITE STRIPES
P-8	DETECTABLE WARNING STRIP	A-4 4" WIDE PARKING STRIPE OR STRIPED AREA - 4" WHITE STRIPES @ 45°, 2' O.C.
P-9	HANDRAIL	A-5 6" YELLOW DRIVE-THRU STRIPE
P-10	3LF OF DEPRESSED CURB FOR DRAINAGE	A-6 DOUBLE HEADED ARROW PAINTED YELLOW
P-11	OPTIONAL BIKE RACK	A-7 2' WIDE WHITE STOP BAR
P-12	B6-12 CURB & GUTTER	A-8 "DRIVE-THRU" W/ARROW YELLOW PAVEMENT MARKING
P-13	B6-18 CURB & GUTTER	A-9 "THANK YOU" YELLOW PAVEMENT MARKING WITH 6" DOUBLE PAINTED YELLOW STRIPE
P-14	FLAGPOLE	A-10 YELLOW PARKING LOT DIRECTIONAL ARROWS
P-15	12" DEPRESSED CURB FOR DRAINAGE	A-11 WHITE INGRESS / EGRESS ARROWS
		A-12 6" WIDE YELLOW MERGE STRIPE
		A-13 6" YELLOW STRIPE

SITE DATA

STREET LOCATION: 2340 E. MORELAND BOULEVARD, WAUKESHA, WI 53186
 SITE AREA: 52,751 SF (1.21 AC.)
 CURRENT ZONING: B-5 COMMUNITY BUSINESS
 BUILDING AREA: 4,388 SF

REQUIREMENTS	REQUIRED	PROVIDED
ZONING REQUIREMENTS		
LANDSCAPE SETBACKS		
NORTH SIDE	10'	5.0'
WEST SIDE	10'	9.6'
EAST SIDE	10'	15'
SOUTH SIDE	10'	15'
INTERIOR LANDSCAPE		
BUILDING SETBACKS		
NORTH SIDE	50'	52.8'
WEST SIDE	10'	84.6'
EAST SIDE	50'	95.3'
SOUTH SIDE	50'	100.4'
PARKING STALL SIZE	9'x18'	9'x18'
DRIVE AISLE WIDTH		
ONE WAY (60° PARKING)	X'	18', 20'
TWO WAY (90° PARKING)	N/A	
PARKING (1 STALL/100 SF GROSS FLOOR AREA)	44 STALLS	54 STANDARD 3 ACCESSIBLE 57 TOTAL
PERVIOUS/IMPERVIOUS AREAS		
PERVIOUS AREA		13,828.1 SF
IMPERVIOUS AREA		38,922.5 SF
GREEN SPACE PERCENTAGE		26.2%



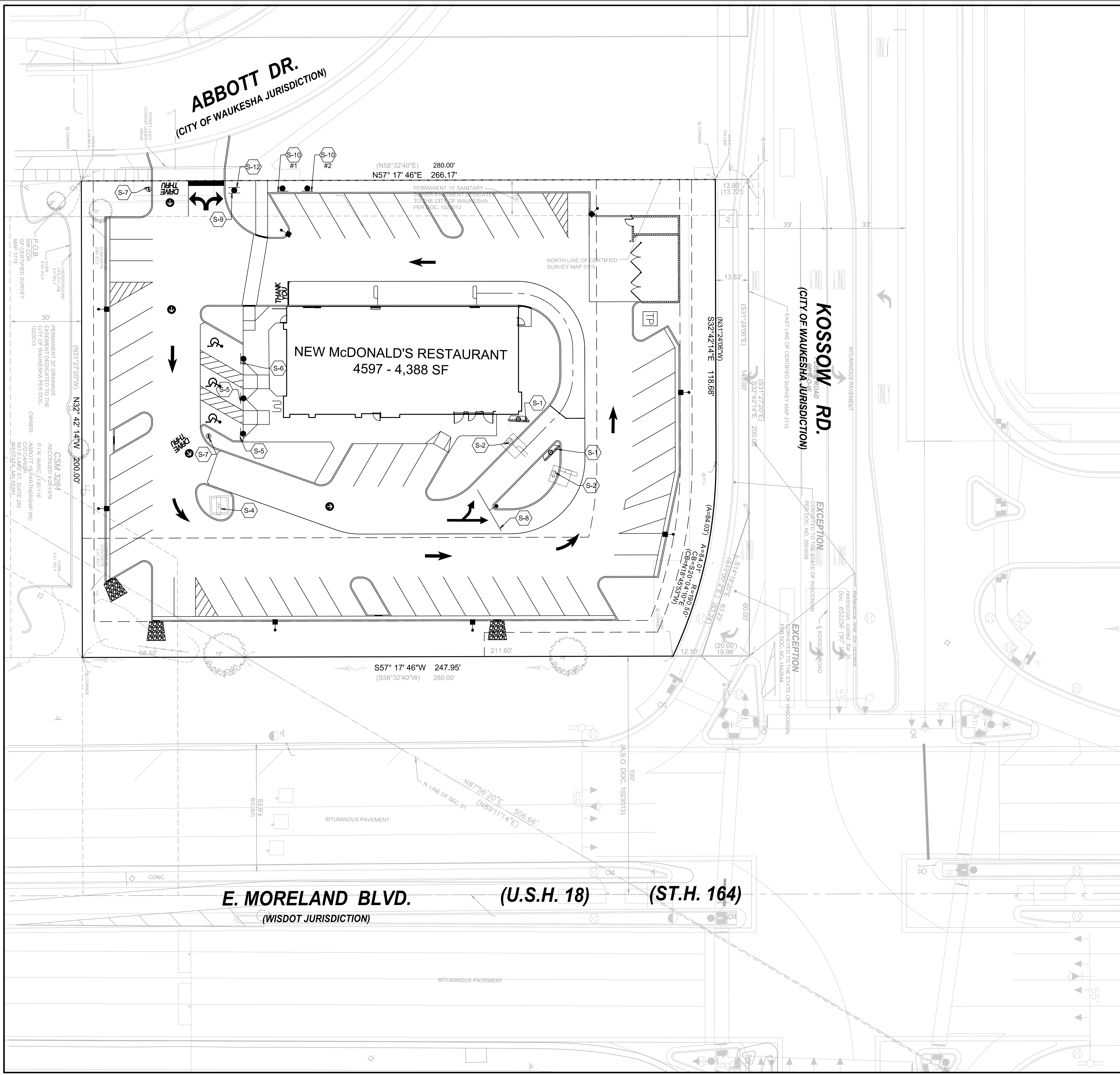
PREPARED BY: V3 Companies
 7325 Janes Avenue
 Woodridge, IL 60517
 630.724.9200 phone
 630.724.9202 fax
 www.v3co.com

M. McDonald's USA, LLC
 These drawings and specifications are the confidential and proprietary property of McDonald's USA, LLC and shall not be copied or reproduced in any form without the prior written consent of McDonald's USA, LLC. Use of these drawings for any other project is strictly prohibited. Use of these drawings for any other project is strictly prohibited. Use of these drawings for any other project is strictly prohibited.

DRAWN BY: JWG
 STD ISSUE DATE: 01-19-17
 REVIEWED BY: JWG
 DATE ISSUED: 01-19-17

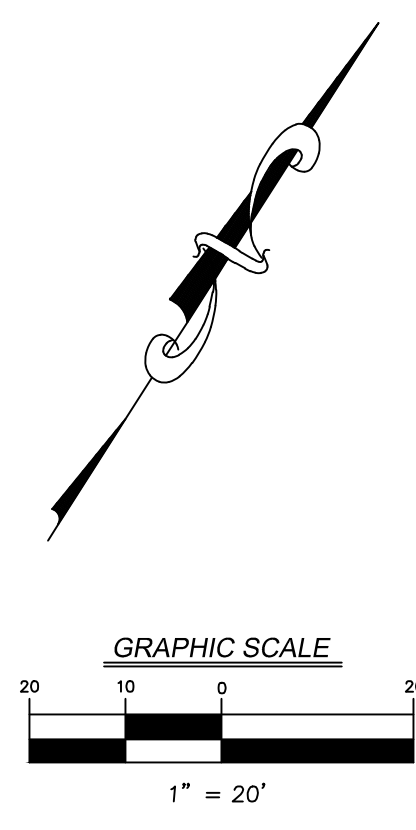
TITLE: SITE PLAN
 DESCRIPTION: MCDONALDS - WAUKESHA, WI
 SHEET NO.: 048-0107
 SITE ADDRESS: 2340 E. MORELAND BLVD., WAUKESHA, WI

06240-31A - SITE PLAN

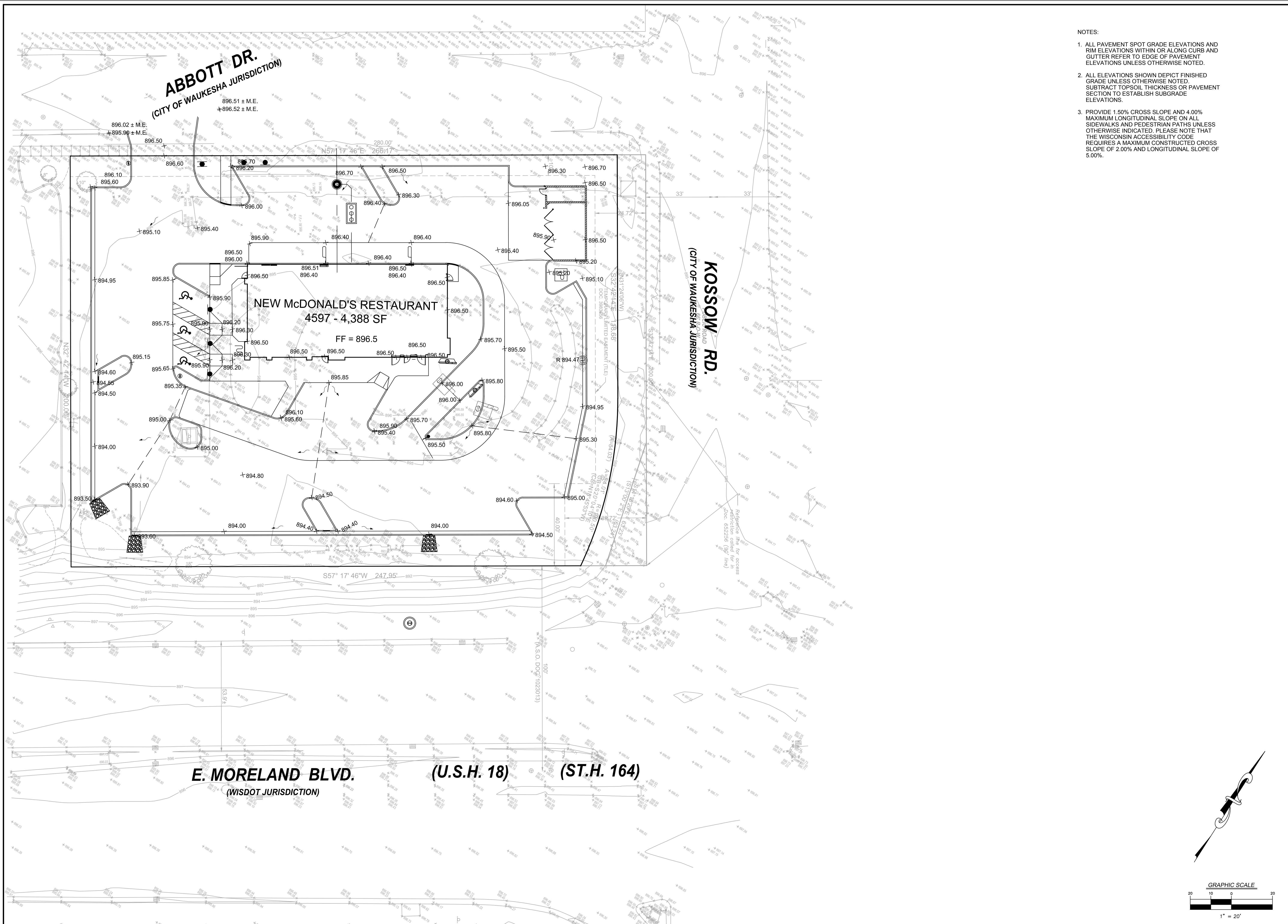


SIGN LEGEND

	S-1 MENU BOARD
	S-2 COD W/ CANOPY
	S-3 PROPOSED NEXT-GENERATION MONUMENT SIGN
	S-4 EXISTING McDONALD'S ROAD SIGN
	S-5 BOLLARD MOUNTED MUTCD SIGN R7-8 - HANDICAP PARKING
	S-6 BOLLARD MOUNTED MUTCD SIGN R7-8C - ADA VAN ACCESSIBLE PARKING
	S-7 DIRECTIONAL SIGN WITHOUT LOGO
	S-8 DOUBLE GATEWAY WELCOME SIGN
	S-9 STOP SIGN
	S-10 PULL FORWARD SIGN ON MOVABLE PEDESTAL
	S-11 RIGHT TURN ONLY SIGN
	S-12 DO NOT ENTER SIGN



SHEET NO. C-3.2 SIGNAGE PLAN	TITLE SIGNAGE PLAN DESCRIPTION MCDONALD'S - WAUKESHA, WI	DRAWN BY AREI STD ISSUE DATE 01-19-17 REVIEWED BY JWVG DATE ISSUED 01-19-17	PREPARED FOR M. McDonald's USA, LLC <small>These drawings and specifications are the confidential and proprietary property of McDonald's USA, LLC and shall not be copied or reproduced for use on this specific site in conjunction with its issue date and are not suitable for use on a different site or at a later time. Use of the services of properly licensed architects and engineers. Reproduction of the contract documents for reuse on another project is not authorized.</small>	V3 Companies 7325 Janes Avenue Woodridge, IL 60517 630.724.9200 phone 630.724.9202 fax www.v3co.com	REV DESCRIPTION BY
---	---	--	--	--	--------------------------

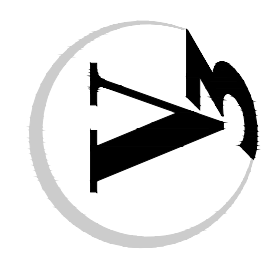


- NOTES:
1. ALL PAVEMENT SPOT GRADE ELEVATIONS AND RIM ELEVATIONS WITHIN OR ALONG CURB AND GUTTER REFER TO EDGE OF PAVEMENT ELEVATIONS UNLESS OTHERWISE NOTED.
 2. ALL ELEVATIONS SHOWN DEPICT FINISHED GRADE UNLESS OTHERWISE NOTED. SUBTRACT TOPSOIL THICKNESS OR PAVEMENT SECTION TO ESTABLISH SUBGRADE ELEVATIONS.
 3. PROVIDE 1.50% CROSS SLOPE AND 4.00% MAXIMUM LONGITUDINAL SLOPE ON ALL SIDEWALKS AND PEDESTRIAN PATHS UNLESS OTHERWISE INDICATED. PLEASE NOTE THAT THE WISCONSIN ACCESSIBILITY CODE REQUIRES A MAXIMUM CONSTRUCTED CROSS SLOPE OF 2.00% AND LONGITUDINAL SLOPE OF 5.00%.

REV	DATE	DESCRIPTION	BY

PREPARED BY:

V3 Companies
 7325 Janes Avenue
 Woodridge, IL 60517
 630.724.9200 phone
 630.724.9202 fax
 www.v3co.com



Visio, Vertere, Virtute... The Vision to Transform with Excellence

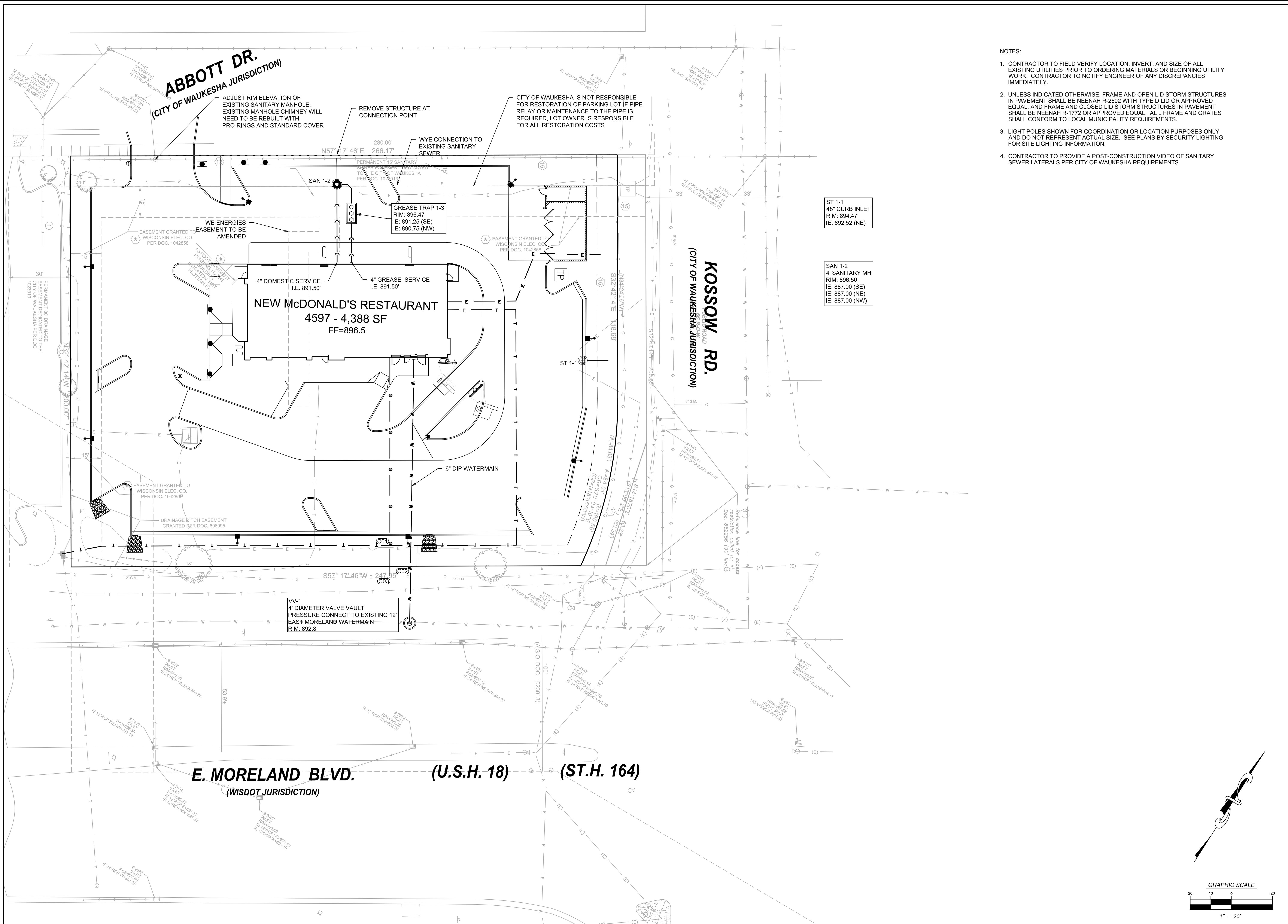
PREPARED FOR:

M. McDonald's USA, LLC

These drawings and specifications are the confidential and proprietary property of McDonald's USA, LLC and shall not be copied or reproduced for use on this specific site in conjunction with its issue date and are not suitable for use on a different site or at a later time. Use of the drawings and specifications for any other project without the prior written consent of properly licensed architects and engineers. Reproduction of the contract documents for reuse on another project is not authorized.

TITLE	DRAWN BY	STD ISSUE DATE	REVIEWED BY	DATE ISSUED	SITE ADDRESS
GRADING PLAN	AREI	01-19-17	JWVG	01-19-17	2340 E. MORELAND BLVD., WAUKESHA, WI
DESCRIPTION	MCDONALD'S - WAUKESHA, WI				
SHEET NO.	048-0107				
C-4.0					
GRADING PLAN					

06240.31A - GRADING PLAN



- NOTES:
1. CONTRACTOR TO FIELD VERIFY LOCATION, INVERT, AND SIZE OF ALL EXISTING UTILITIES PRIOR TO ORDERING MATERIALS OR BEGINNING UTILITY WORK. CONTRACTOR TO NOTIFY ENGINEER OF ANY DISCREPANCIES IMMEDIATELY.
 2. UNLESS INDICATED OTHERWISE, FRAME AND OPEN LID STORM STRUCTURES IN PAVEMENT SHALL BE NEENAH R-2502 WITH TYPE D LID OR APPROVED EQUAL, AND FRAME AND CLOSED LID STORM STRUCTURES IN PAVEMENT SHALL BE NEENAH R-1772 OR APPROVED EQUAL. ALL L FRAME AND GRATES SHALL CONFORM TO LOCAL MUNICIPALITY REQUIREMENTS.
 3. LIGHT POLES SHOWN FOR COORDINATION OR LOCATION PURPOSES ONLY AND DO NOT REPRESENT ACTUAL SIZE. SEE PLANS BY SECURITY LIGHTING FOR SITE LIGHTING INFORMATION.
 4. CONTRACTOR TO PROVIDE A POST-CONSTRUCTION VIDEO OF SANITARY SEWER LATERALS PER CITY OF WAUKESHA REQUIREMENTS.

ST 1-1
48\"/>

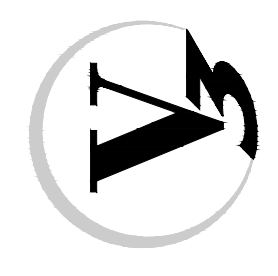
SAN 1-2
4\"/>

VV-1
4\"/>

NO.	DATE	DESCRIPTION	BY

PREPARED BY:

V3 Companies
7325 Janes Avenue
Woodridge, IL 60517
630.724.9200 phone
630.724.9202 fax
www.v3co.com



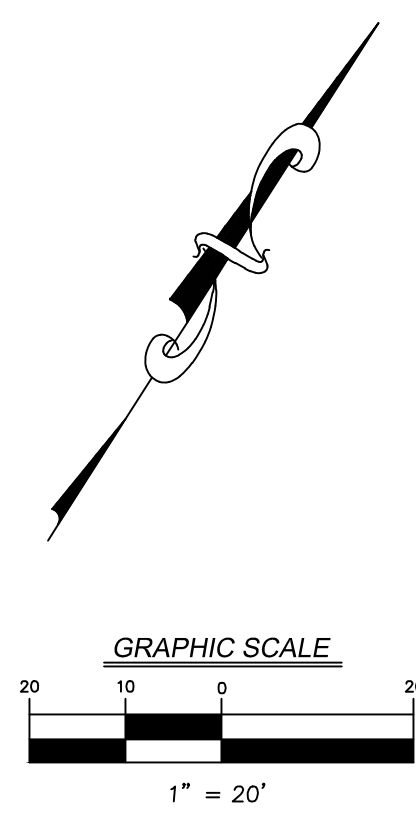
Visio, Vertere, Virtute... The Vision to Transform with Excellence

PREPARED FOR:

M. McDonald's USA, LLC

These drawings and specifications are the confidential and proprietary property of McDonald's USA, LLC and shall not be copied or reproduced for use on this specific site in conjunction with its issue date and are not suitable for use on a different site or at a later time. Use of the drawings and specifications on any other project without the written services of properly licensed architects and engineers. Reproduction of the contract documents for reuse on another project is not authorized.

DRAWN BY JREI	STD ISSUE DATE 01-19-17	REVIEWED BY JWVG	DATE ISSUED 01-19-17
	TITLE UTILITY PLAN		DESCRIPTION MCDONALD'S - WAUKESHA, WI
SHEET NO. C-5.0	SITE ADDRESS 048-0107 2340 E. MORELAND BLVD., WAUKESHA, WI	UTILITY PLAN	



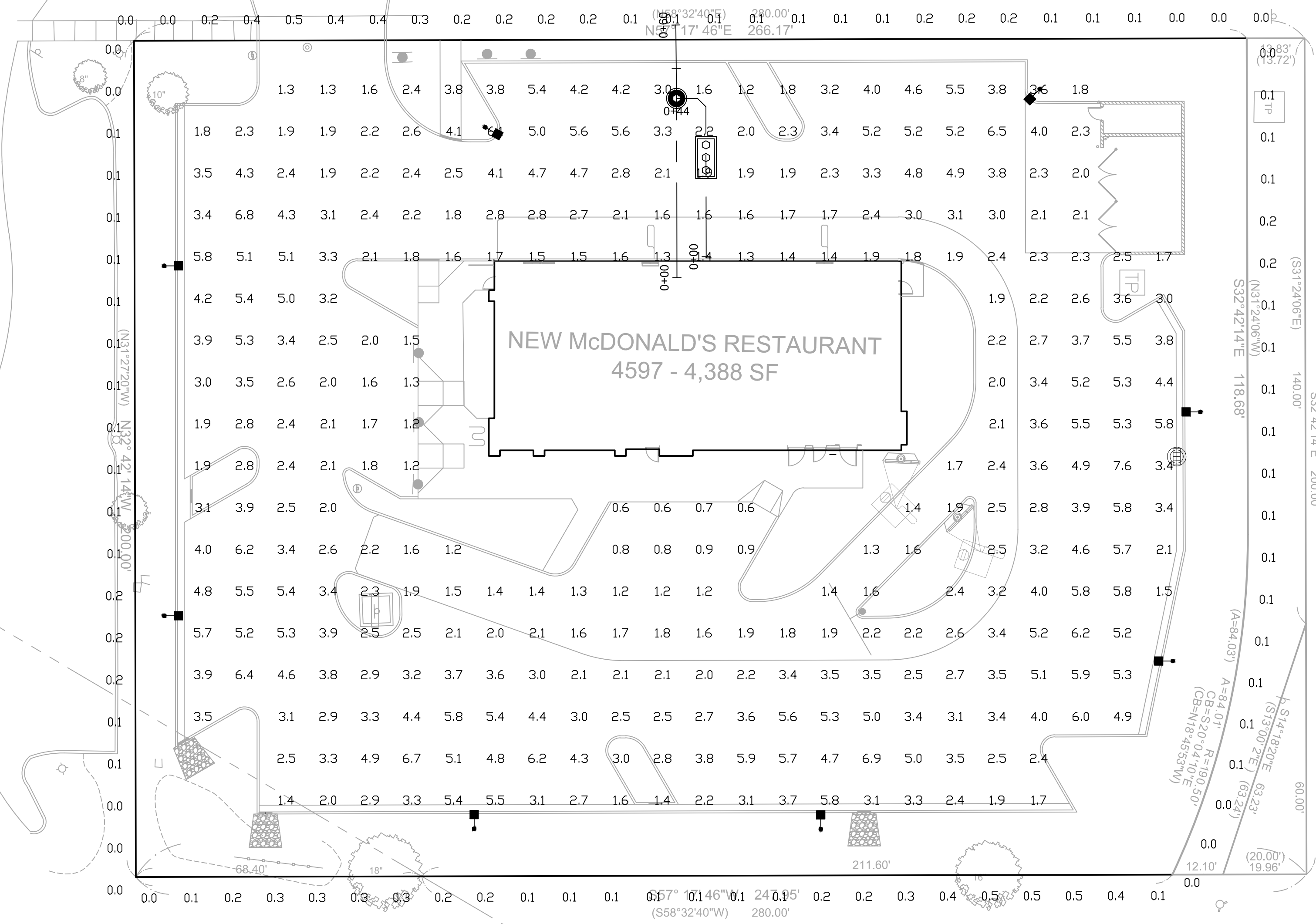
06240.31A - UTILITY PLAN

NOTES:
 1. THE FOOTCANDLE LEVELS AS SHOWN ARE BASED ON THE FOLLOWING CRITERIA. ANY SUBSTITUTIONS IN SPECIFIED FIXTURES OR CHANGES TO LAYOUT WILL AFFECT LIGHTING LEVELS SHOWN AND WILL NOT BE THE RESPONSIBILITY OF SECURITY LIGHTING.
 2. THE CONTRIBUTION OF THE SDDFIT / BUILDING LIGHTING IS NOT REFLECTED ON THE DRAWING UNLESS SDDFIT / BUILDING LIGHTING IS SPECIFIED IN THE FIXTURE SCHEDULE BELOW.
 3. DISTANCE BETWEEN READINGS 10'
 4. FINAL ADJUSTMENTS TO AIMING ANGLE/DIRECTION OF FIXTURES MAY BE REQUIRED TO ELIMINATE LIGHT TRESPASS OR GLARE ONTO ADJOINING PROPERTIES OR ROADWAYS.

ABBOTT DR.
 (CITY OF WAUKESHA JURISDICTION)

KOSSOW RD.
 (CITY OF WAUKESHA JURISDICTION)

NEW McDONALD'S RESTAURANT
 4597 - 4,388 SF



PAVED SURFACE READINGS

Average	3.1
Maximum	7.6
Minimum	0.6
Avg/Min	5.22
Max/Min	12.67

PROPERTY LINE READINGS

Average	0.1
Maximum	0.5
Minimum	0.0
Avg/Min	N/A
Max/Min	N/A

FIXTURE TYPE:	SYMBOL	FIXTURE QUANTITY	CONFIG	QUANTITY	TENON TOP FITTERS	QUANTITY	EPA	MOUNTING HEIGHT	LLF	POLE TYPE:	QUANTITY	WIND Load	ALLOWED EPA
VP-L-96NB-280-4K-T4-UNV-RA--BLC	[Symbol]	8	SGL	8	TTFVIPER	8	1.00	21'	0.87	SSP-4118-GL--TT (4")	8	90mph	7.2

* PROJECT WIND LOAD CRITERIA BASED ON:
 ASCE 7-10 WIND SPEEDS (3-SEC PEAK GUST MPH)
 50 YEAR MEAN RECURRENCE INTERVAL

THIS DRAWING MEETS OR EXCEEDS MINIMUM CURRENT ILLUMINATION SPECIFICATIONS OF A 3-4 FOOTCANDLE AVERAGE, UNLESS SUPERSEDED BY OTHER REQUIREMENTS.

THIS LAYOUT MAY NOT MEET TITLE 24 OR LOCAL ENERGY REQUIREMENTS. IF THIS LAYOUT NEEDS TO BE TITLE 24 COMPLIANT OR MEET OTHER ENERGY REQUIREMENTS, PLEASE CONSULT FACTORY WITH SPECIFIC DETAILS REGARDING PROJECT REQUIREMENTS SO THAT REVISIONS MAY BE MADE TO THE DRAWING.

THIS LIGHTING PATTERN REPRESENTS ILLUMINATION LEVELS CALCULATED FROM LABORATORY DATA TAKEN UNDER CONTROLLED CONDITIONS IN ACCORDANCE WITH ILLUMINATING ENGINEERING SOCIETY APPROVED METHODS. ACTUAL PERFORMANCE OF ANY MANUFACTURER'S LUMINAIRE MAY VARY DUE TO VARIATION IN ELECTRICAL VOLTAGE, TOLERANCE IN LAMPS, AND OTHER VARIABLE FIELD CONDITIONS.

VP-L Viper (Large)

FEATURES

- The Beacon Viper luminaire is available in two sizes with a wide choice of different LED wattage configurations and optical distributions designed to replace HID lighting up to 1000W MH or HPS and with 5 different mounting options for application in a wide variety of new and existing installations. Luminaires are suitable for wet locations.
- Each Viper luminaire is supplied with an one piece optical cartridge system consisting of an LED engine, LED lamps, optics, gasket and stainless steel bezel.
- A thermal circuit, LIFESHIELD™, shall protect the luminaire from excessive temperature by interfacing with the 0-10V dimmable drivers to reduce drive current as necessary.
- Aluminum thermal clad board with 0.062" thick aluminum base layer, thermally conductive dielectric layer, 0.0014" thick copper circuit layer circuit layer designed with copper pours to minimize thermal impedance across dielectric.

ORDERING INFORMATION

MODEL	CCT-COLOR TEMP	VOLTAGE	MOUNTING OPTIONS	COLOR
VP-L Viper (Large)	5K 5000°K (std.) 4K 4000°K 3K 3000°K	UNV 120-277V 347 347V 480 480V	RA Rectangular Arm SF2 2 1/2" OD Slipfitter PK2 2 1/2" Adjustable Knuckle WB Wall Bracket	B8T Basic Black Textured BMT Black Matte Textured WWT White Textured MBT Metallic Bronze Textured BZT Bronze Textured GYS Gray Smooth DPS Dark Platinum Smooth GAT Green Textured MST Metallic Silver Textured MTT Metallic Titanium Textured OWI Old World Iron RAL

DETAILS

SQUARE STRAIGHT STEEL POLES

Specifications

- Square straight steel shaft
- One-piece construction
- 2 3/8" OD tenons, or factory-drilled side mount
- Ground lug standard (3/8" 16 thread)
- Steel base plate
- Two-piece base cover
- Four L-shaped fully galvanized anchor bolts with nuts and washers, metal template
- Finished in weatherproof powder-coat paint
- Gasketed hand hole standard

ORDERING INFORMATION

Pole Catalog Number	Height	Strength EPA	Wind Load Rating: 10mph EPA	100mph ZEM	Pole Size	Base Square	Anchor Bolt Size	Suggested Pole Cap	Max. Crane Weight	Max. Pole Weight		
SSP-4118-XXX-XX	18	13.8	10.6	8.2	6.3	4"	10/25"	3/4"	10/5"	8-11"	4"	147
SSP-4125-XXX-XX	25	6.4	4.3	2.7	1.4	4"	10/25"	3/4"	10/5"	8-11"	4"	190
SSP-5125-XXX-XX	25	8.8	5.9	3.6	1.9	5"	12"	1"	10/5"	10-13.5"	4"	231
SSP-4725-XXX-XX	25	10.9	8.1	6.0	4.4	4"	11"	3/4"	10/5"	8-11"	4"	266
SSP-5725-XXX-XX	22	22.4	17.3	13.5	10.5	5"	12"	1"	10/5"	10-13.5"	4"	263
SSP-5730-XXX-XX	28	13.7	9.9	7.1	4.9	5"	12"	1"	10/5"	10-13.5"	4"	340
SSP-5730-XXX-XX	30	11.5	8.0	5.4	3.4	5"	12"	1"	10/5"	10-13.5"	4"	398

CATALOG LOGIC

SAMPLE CATALOG NUMBER
 SSP XX XX X X XX XX

Series Shaft Size Nominal Height Top Type Mounting Arrangement Pole Type Option Finish

FINISHES
 SSP Square Straight Steel

SHAFT SIZE SQUARE / GAUGE
 41 4.0 11 ga.
 47 4.0 7 ga.
 51 5.0 11 ga.
 57 5.0 7 ga.

NOMINAL POLE HEIGHT (in feet)
 See ordering information above!

MOUNTING ARRANGEMENT
 A One Fixture
 B Two Fixtures at 90°
 C Two Fixtures at 180°
 D Three Fixtures at 90°
 E Four Fixtures at 90°
 P Tenon only

FINISH
 DB Dark Bronze
 BK Black
 WH White
 PS Platinum Silver
 OO Natural Galvanized Finish

ACCESSORY: TENON TOP MOUNTING BRACKET
 TTF-10 Single
 TTF-20 Twin 90°
 TTF-30 Twin 180°
 TTF-39 Triple 90°
 TTF-30 Triple 120°
 TTF-49 Quad 90°

SECURITY LIGHTING SYSTEMS

A HUBBELL LIGHTING, INC. COMPANY

Performance Designed Lighting Products

1085 Johnson Drive • Buffalo Grove, IL 60089 • TOLL-FREE 800-544-4848 • PHONE 847-279-0627 • FAX 847-279-0642

www.securitylighting.com

Rev 1/12

PREPARED BY: V3 Companies
 7325 Janes Avenue
 Woodridge, IL 60517
 630.724.9200 phone
 630.724.9202 fax
 www.v3co.com

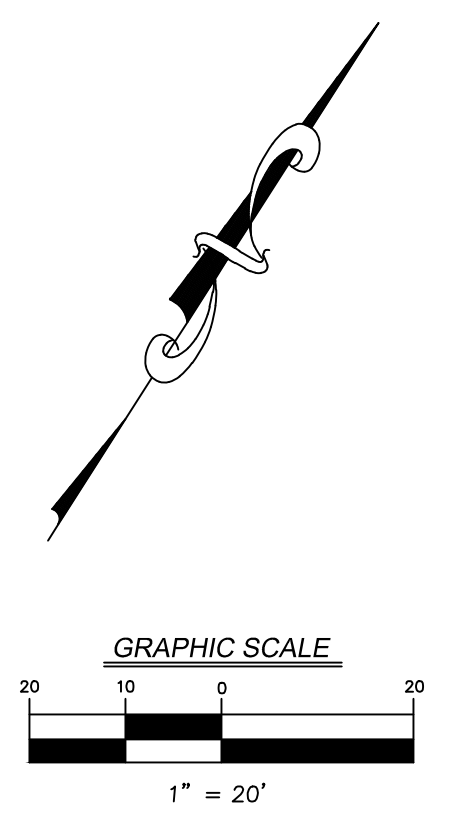
REVIEWED BY: JWG
 DATE ISSUED: 01-19-17

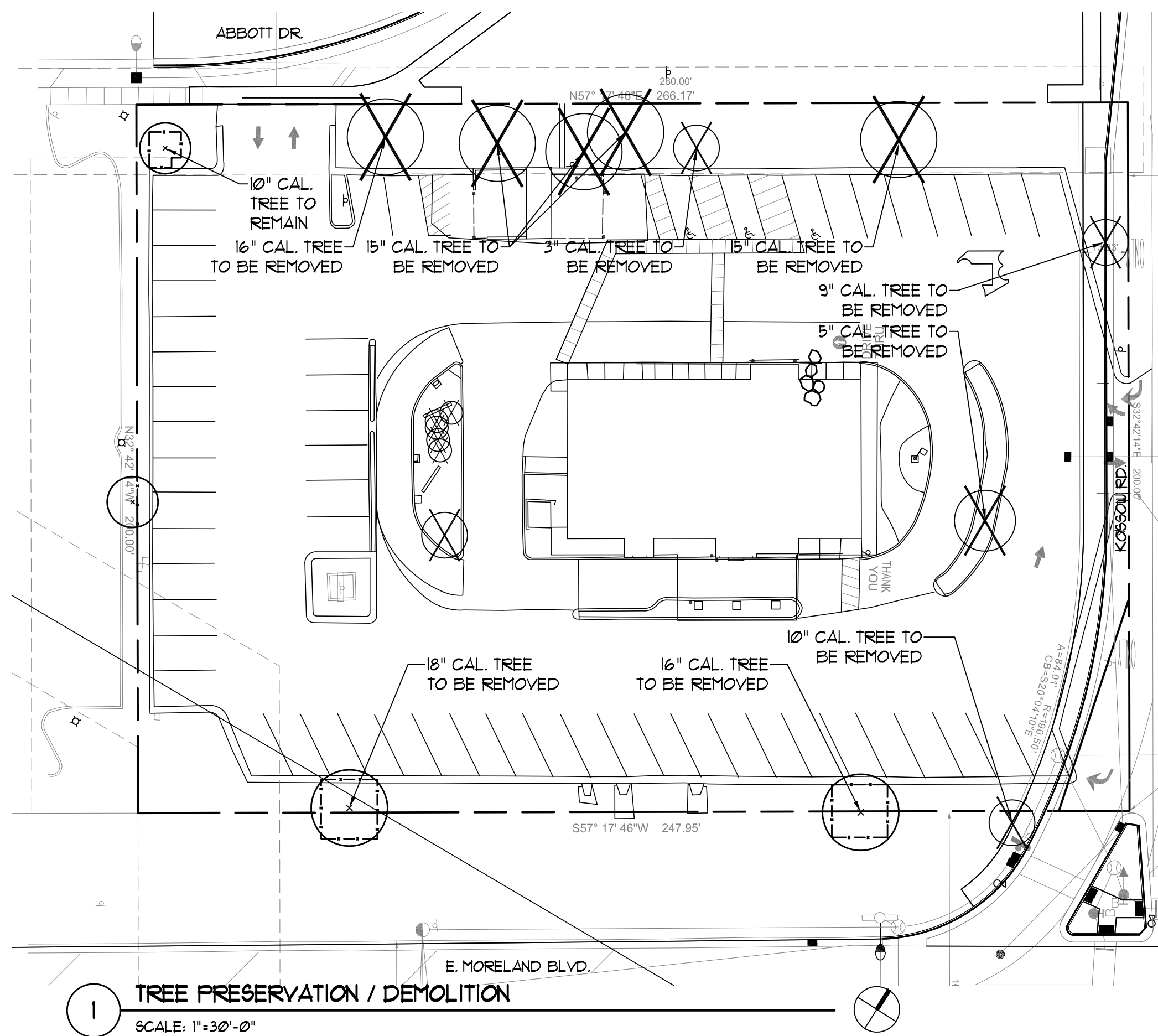
TITLE: PHOTOMETRIC PLAN

DESCRIPTION: McDONALD'S - WAUKESHA, WI

SHEET NO: C-8.0

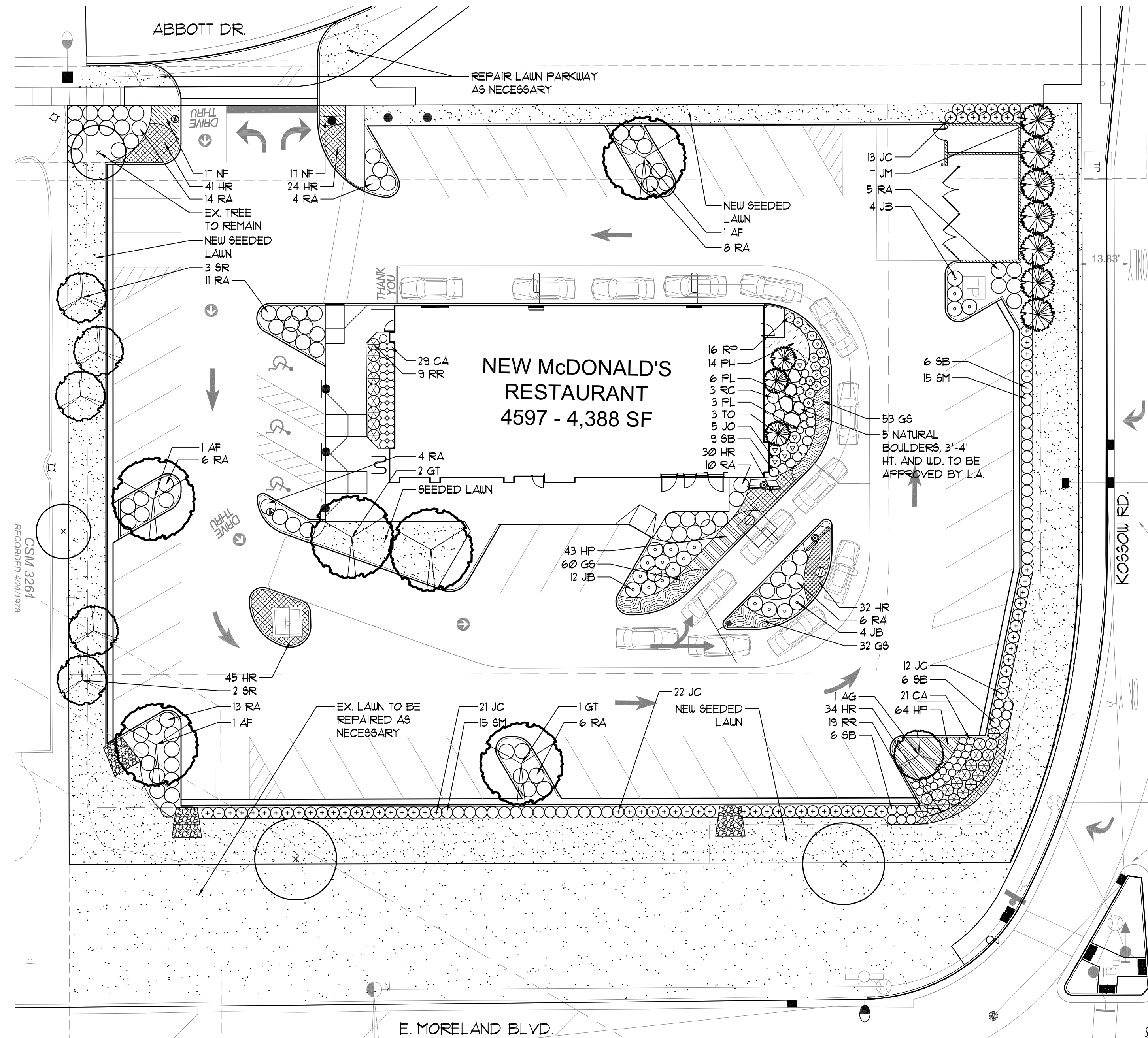
PHOTOMETRIC PLAN





1 TREE PRESERVATION / DEMOLITION

SCALE: 1" = 30'-0"



2 LANDSCAPE PLAN

SCALE: 1" = 20'-0"

GENERAL NOTES

- ALL DIMENSIONS ARE TO BE VERIFIED IN THE FIELD BY THE CONTRACTOR. NOTIFY THE LANDSCAPE ARCHITECT OF ANY DISCREPANCIES PRIOR TO STARTING WORK.
- THE CONTRACTOR SHALL HAVE A MINIMUM OF FIVE YEARS EXPERIENCE WITH PROJECTS OF SIMILAR SIZE AND TYPE.
- SPECIES AND SIZES OF PLANTS LISTED IN THE PLANT LIST ARE SUBJECT TO AVAILABILITY AT TIME OF INSTALLATION. IF SUBSTITUTIONS ARE REQUIRED, THE CONTRACTOR SHALL SUBMIT REQUESTS TO THE LANDSCAPE ARCHITECT FOR APPROVAL.
- QUANTITIES SHOWN ON THE DRAWING AND IN THE PLANT LIST ARE PROVIDED ONLY FOR THE CONTRACTOR'S CONVENIENCE. THE NUMBER OF PLANT SYMBOLS SHOWN ON THE DRAWINGS SUPERCEDE ALL QUANTITIES PROVIDED. THE CONTRACTOR SHALL VERIFY ALL PLANT QUANTITIES ON THE DRAWINGS AND NOTIFY THE LANDSCAPE ARCHITECT OF ANY DISCREPANCIES PRIOR TO INSTALLATION. THE CONTRACTOR IS RESPONSIBLE FOR INSTALLING ALL PLANTS PER THE PLANT SYMBOLS SHOWN ON THE DRAWINGS.
- ALL OVERHEAD AND UNDERGROUND UTILITIES ARE TO BE LOCATED PRIOR TO DIGGING OR EXCAVATION. IF UTILITIES OR OTHER OBSTRUCTIONS ARE DISCOVERED TO CONFLICT WITH GRADING, PLANT OR MATERIALS PLACEMENT, NOTIFY THE LANDSCAPE ARCHITECT SO THAT ADJUSTMENTS MAY BE MADE PRIOR TO PROCEEDING.
- CONTRACTOR SHALL TAKE ALL PRECAUTIONS TO PROTECT EXISTING PLANTS, LAWN AREA, SITE FEATURES AND PAVING TO REMAIN. ANY DAMAGE TO THESE EXISTING AREAS OR FEATURES SHALL BE REPLACED BY THE CONTRACTOR AT THEIR EXPENSE. DAMAGED LAWN AREAS SHALL BE FILLED, RE-GRADED, TOPSOIL ADDED AS NEEDED AND BE RESTORED WITH SOD. REPLACED FEATURES, PLANTS AND SOD SHALL BE WARRANTED BY THE CONTRACTOR FOR A PERIOD OF ONE YEAR.
- PROVIDE POSITIVE DRAINAGE AT ALL TIMES. DO NOT OBSTRUCT THE NATURAL OR ENGINEERED DRAINAGE FLOW PATTERN. NOTIFY THE LANDSCAPE ARCHITECT OF ANY DRAINAGE CONCERNS.
- IMPORTED TOPSOIL FOR THIS PROJECT SHALL BE FRIABLE LOAM OR SANDY LOAM, COMPRISED OF BETWEEN 20% AND 50% SILT, 10% AND 25% CLAY, AND 30% AND 60% SAND. THE PH LEVEL SHALL BE BETWEEN 6.0 AND 7.2 AND THE ORGANIC MATTER CONTENT SHALL BE BETWEEN 3% AND 6%. TOPSOIL SHALL BE FREE OF SEEDS, STONES, LARGE CLUMPS, ROOTS, LEAVES AND DEBRIS, AND SHALL NOT BE DELIVERED WHILE IN A FROZEN OR MUDDY CONDITION. CONTRACTOR SHALL PROVIDE A RECENT SOIL TEST ANALYSIS FOR ALL SOIL TO BE USED. THE ANALYSIS MUST INCLUDE THE INFORMATION REQUIRED ABOVE. IF TESTED TOPSOIL REQUIRES AMENDMENTS TO COMPLY WITH REQUIREMENTS, CONTRACTOR SHALL AMEND THE TOPSOIL, RE-TEST AND RESUBMIT THE ANALYSIS FOR APPROVAL PRIOR TO BRINGING THE TOPSOIL ON SITE.
- EXISTING TOPSOIL FROM ON SITE THAT HAS BEEN STOCKPILED MAY BE USED IF IT MEETS THE REQUIREMENTS FOR IMPORTED TOPSOIL. THIS INCLUDES CONDUCTING SOIL TEST ANALYSIS AND ADDING AMENDMENTS AS NEEDED SO THAT THE SOIL COMPLIES WITH THE REQUIREMENTS.
- LAWN SEED SHALL BE A TALL FESCUE BLEND SOD, SUCH AS DRYSPRELL TALL FESCUE BLEND, AVAILABLE FROM NATIONAL SEED. SEEDING SHALL ONLY BE INSTALLED WITHIN THE FOLLOWING DATES UNLESS APPROVED BY THE LANDSCAPE ARCHITECT:
MAY 1 THROUGH JUN 15
AUG 15 THROUGH OCT 15
- ALL PLANT MATERIAL MUST BE SPECIMEN QUALITY, TRUE TO SPECIES AND VARIETY, WITH FULL, DENSE AND HEALTHY FORMS. PLANTS THAT ARE NOT SPECIMEN QUALITY WILL NOT BE ACCEPTED. ALL PLANTS MUST HAVE BEEN LOCALLY GROWN AT A STATE INSPECTED AND CERTIFIED NURSERY, LOCATED WITHIN 50 MILES OF THE PROJECT SITE.
- ALL DECIDUOUS AND EVERGREEN TREES AND SHRUBS THAT ARE 36" HEIGHT OR TALLER ARE TO HAVE FRESHLY DUG, BALLED AND BURLAPPED ROOT BALLS WITH SIZES THAT MEET THE STANDARDS OF THE AMERICAN NURSERYMEN'S ASSOCIATION. DECIDUOUS AND EVERGREEN SHRUBS THAT ARE 30" HEIGHT OR LESS MAY EITHER HAVE FRESHLY DUG, BALLED AND BURLAPPED ROOT BALLS OR MAY BE CONTAINER GROWN. ALL PERENNIALS, ORNAMENTAL GRASSES AND GROUNDCOVER MUST BE CONTAINER GROWN. CONTAINER GROWN MATERIALS SHALL HAVE BEEN GROWN IN THEIR CURRENT CONTAINER FOR A PERIOD OF NO LESS THAN SIX MONTHS.
- ALL TREES SHALL BE INSPECTED BY THE LANDSCAPE ARCHITECT, AT THE NURSERY, PRIOR TO DIGGING. TREES THAT ARE ACCEPTABLE WILL BE SEALED. ALL SEALS APPLIED BY THE LANDSCAPE ARCHITECT MUST REMAIN ON THE TREES AND ARE NOT TO BE REMOVED BY THE CONTRACTOR. ALL TREES MUST HAVE SEALS IN PLACE AT TIME OF ACCEPTANCE OR WILL BE AUTOMATICALLY REJECTED. HEELED-IN TREES WILL NOT BE ACCEPTED WITHOUT PRIOR APPROVAL FROM THE LANDSCAPE ARCHITECT.
- ALL SHRUBS 36" HEIGHT OR TALLER ARE TO BE APPROVED BY THE LANDSCAPE ARCHITECT PRIOR TO INSTALLATION. AN EXAMPLE SHRUB MAY BE TAGGED OR PICTURES MAY BE SUBMITTED FOR APPROVAL. ALL SHRUBS THAT DO NOT MATCH THE APPROVED EXAMPLE SHRUB IN SIZE AND FORM, WILL BE REJECTED. ALL OTHER SHRUBS MUST MEET THE MINIMUM SIZES GIVEN IN THE PLANT LIST AND BE SPECIMEN QUALITY. SHRUBS THAT DO NOT MEET THESE GUIDELINES WILL BE REJECTED.
- PLANT MATERIAL SHALL ONLY BE INSTALLED WITHIN THE FOLLOWING DATES:
DECIDUOUS TREES AND SHRUBS: APR 1 THROUGH NOV 15
SPRING DIG DECIDUOUS TREES: APR 1 THROUGH OCT 15
EVERGREEN TREES AND SHRUBS: APR 1 THROUGH NOV 1
PERENNIALS AND GROUNDCOVERS: MAY 1 THROUGH OCT 15
- TEST TREE PITS AND PLANT BEDS FOR ADEQUATE DRAINAGE. FILL PLANT PIT WITH 12" OF WATER. IF WATER LEVEL DOES NOT DROP A MINIMUM OF ONE INCH PER HOUR, NOTIFY THE LANDSCAPE ARCHITECT OF DRAINAGE ISSUES.
- PLANTING MIX FOR ALL PLANTINGS SHALL BE AS FOLLOWS. MIXING OF PLANTING MIX COMPONENTS SHALL BE THOROUGHLY BLENDED OUTSIDE THE PLANTING PITS, PRIOR TO PLANTING.
TREES AND SHRUBS: 80% TOPSOIL, 10% SAND, 10% PINE FINES
PERENNIALS AND ANNUALS: 10% TOPSOIL, 15% SAND, 15% PINE FINES
- FOR PLANTING MIXES, SAND SHALL BE ANGULAR, COARSE SAND AND PINE FINES SHALL BE 3/8" SOUTHERN PINE BARK FINES.
- EXCAVATE PARKING LOT ISLANDS AND CURBED PLANTERS TO A DEPTH OF 18" AND BACKFILL WITH TOPSOIL. BERM PLANTERS AND ISLANDS TO A HEIGHT OF 6" ABOVE TOP OF CURB.
- ALL PLANT BEDS ARE TO BE WELL SHAPED 'SPADE CUT' EDGES, 3" DEPTH, IN LINES OR IN CURVES AS SHOWN ON THE DRAWINGS.
- THE CONTRACTOR SHALL REQUEST AN INSPECTION OF LANDSCAPE PLANTING UPON SUBSTANTIAL COMPLETION FOR "ACCEPTANCE". REQUEST MUST BE SUBMITTED TO LANDSCAPE ARCHITECT AT LEAST TEN DAYS PRIOR TO ANTICIPATED INSPECTION. UPON INSPECTION THE LANDSCAPE ARCHITECT SHALL PREPARE A PUNCH LIST OF UNACCEPTABLE OR OUTSTANDING ITEMS. AFTER THE ITEMS HAVE BEEN SATISFACTORILY COMPLETED AND REVIEWED, THE LANDSCAPE ARCHITECT WILL RECOMMEND "ACCEPTANCE".
- ALL PLANT MATERIAL SHALL BE GUARANTEED FOR A PERIOD OF ONE YEAR FROM DATE OF "ACCEPTANCE". AT OR NEAR THE END OF THE GUARANTEE PERIOD, THE CONTRACTOR SHALL REQUEST AN INSPECTION OF LANDSCAPE PLANTING FOR "FINAL ACCEPTANCE". REQUEST MUST BE SUBMITTED TO LANDSCAPE ARCHITECT AT LEAST TEN DAYS PRIOR TO ANTICIPATED INSPECTION. UPON INSPECTION THE LANDSCAPE ARCHITECT SHALL PREPARE A PUNCH LIST OF UNACCEPTABLE ITEMS. AFTER THE ITEMS HAVE BEEN SATISFACTORILY REPLACED OR REPAIRED, REVIEWED AND APPROVED, THE LANDSCAPE ARCHITECT WILL RECOMMEND "FINAL ACCEPTANCE".

PLANT LIST

CODE	BOTANICAL NAME	COMMON NAME	SIZE	ROOT	TOTAL	ADDITIONAL NOTES
DECIDUOUS TREES						
AF	ACER x FREEMANII 'AUTUM BLAZE'	AUTUM BLAZE MAPLE	25" CALIPER	B 4 B	3	BRANCHED UP 5'
AG	AMELANCHIER x G. 'AUTUM BRILLIANCE'	APPLE SERVICEBERRY	6' HEIGHT	B 4 B	1	CLUMP FORM
GT	GLEDITSIA T. VAR. INERMIS 'SKYLINE'	SKYLINE HONEYLOCUST	25" CALIPER	B 4 B	3	BRANCHED UP 5'
SR	SYRINGA RETICULATA	JAPANESE TREE LILAC	6' HEIGHT	B 4 B	5	CLUMP FORM
EVERGREEN TREES						
JM	JUNIFERUS CHINENSIS 'MOUNTBATTEN'	MOUNTBATTEN JUNIFER	6' HEIGHT	B 4 B	1	
TO	THUJA OCCIDENTALIS 'TECHNY'	TECHNY ARBORVITAE	6' HEIGHT	B 4 B	3	
DECIDUOUS SHRUBS						
RA	RHUS AROMATICA 'GRO-LOW'	GRO-LOW SUMAC	3 GALLON	CONTAINER	81	
RC	RIBES ALPINUM	ALPINE CURRANT	24" HT 4 9PD	CONTAINER	3	
RR	ROSA 'RADRAZZ'	KNOCKOUT ROSE	5 GALLON	CONTAINER	28	
RP	ROSA PINK DRIFT 'MEILOCOS'	PINK DRIFT GROUNDCOVER ROSE	3 GALLON	CONTAINER	16	
SB	SPIRAEA BETULIFOLIA 'TOR'	TOR BIRCHLEAF SPIRAEA	5 GALLON	CONTAINER	46	
SM	SYRINGA MEYERI 'FALIBIN'	DWARF KOREAN LILAC	24" HT 4 9PD	B 4 B	30	
EVERGREEN SHRUBS						
JC	JUNIFERUS CHINENSIS 'SEA GREEN'	SEA GREEN JUNIFER	3 GALLON	CONTAINER	72	
JB	JUNIFERUS SABINA 'BUFFALO'	BUFFALO JUNIFER	3 GALLON	CONTAINER	20	
JO	JUNIFERUS CHINENSIS 'OLD GOLD'	OLD GOLD JUNIFER	18" HT 4 9PD	CONTAINER	6	
PERENNIALS, ORNAMENTAL GRASSES AND GROUNDCOVERS						
CA	CALAMAGROSTIS A. KARL FOERSTER	FEATHER REED GRASS	1 GALLON	CONTAINER	50	SPACED 18" O.C.
GS	GERANIUM 'ROZANNE'	ROZANNE GERANIUM	1 GALLON	CONTAINER	145	SPACED 15" O.C.
HP	HEUCHERA 'PURPLE PETTICOATS'	PURPLE PETTICOATS CORAL BELLS	1 GALLON	CONTAINER	101	SPACED 18" O.C.
HR	HEMEROCALLIS 'LITTLE WINE CUP'	LITTLE WINE CUP DAYLILY	1 GALLON	CONTAINER	103	SPACED 18" O.C.
	HEMEROCALLIS 'HAPPY RETURNS'	HAPPY RETURNS DAYLILY	1 GALLON	CONTAINER	103	EVENLY MIXED
NF	NEPETA x FAASSENII	FAASSEN'S CATMINT	1 GALLON	CONTAINER	34	SPACED 18" O.C.
PH	PENNISTEMUM ALOPECUROIDES 'HAMLEN'	DWARF FOUNTAIN GRASS	1 GALLON	CONTAINER	14	SPACED 24" O.C.
PL	PEROVSKIA 'LITTLE SPIRE'	LITTLE SPIRE RUSSIAN SAGE	1 GALLON	CONTAINER	9	SPACED AS SHOWN

PREPARED BY: **V3 Companies**
 7325 Janes Avenue
 Woodridge, IL 60517
 630.724.9200 phone
 630.724.9202 fax
 www.v3co.com

McDonald's USA, LLC
 These drawings and specifications are the confidential and proprietary property of McDonald's USA, LLC and shall not be copied or reproduced in any form without the express written consent of McDonald's USA, LLC. The contractor shall be responsible for obtaining all necessary permits for use on this specific site in conjunction with its issue date and are not suitable for use on a different site or at a later date. Use of these drawings and specifications for any other project without the express written consent of properly licensed architects and engineers. Reproduction of the contract documents for reuse on another project is not authorized.

DRAWN BY: MRM
 STD ISSUE DATE: 7/19/17
 REVIEWED BY: WVS
 DATE ISSUED: 7/19/17

TITLE: **LANDSCAPE PLAN**
 DESCRIPTION: **McDONALD'S - WAUKESHA, WI**
 SITE ADDRESS: **2340 E. MORELAND BLVD., WAUKESHA, WI**
 SHEET NO.: **048-0107**
L-1.0
LANDSCAPE PLAN

REV | DATE | DESCRIPTION | BY