

**1** CAMPUS SITE PLAN  
1" = 160'-0" | PC01

# ProHealth Care Waukesha Memorial Hospital - Integrated Procedure Services (IPS)

725 American Avenue  
Waukesha, WI 53188



## PLAN COMMISSION REVIEW SUBMISSION

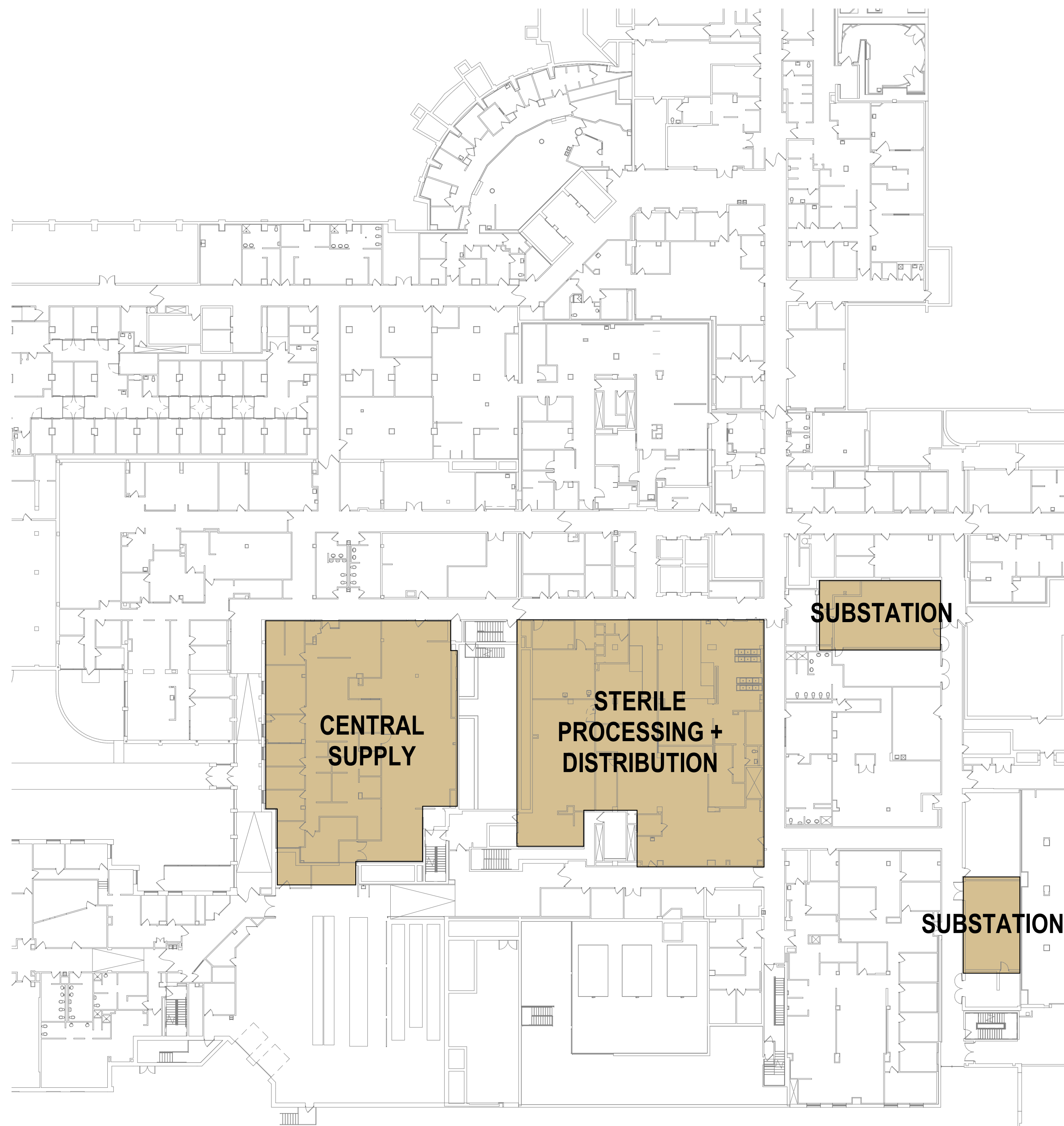
04/28/2025

PROJECT NUMBER: 422681-01

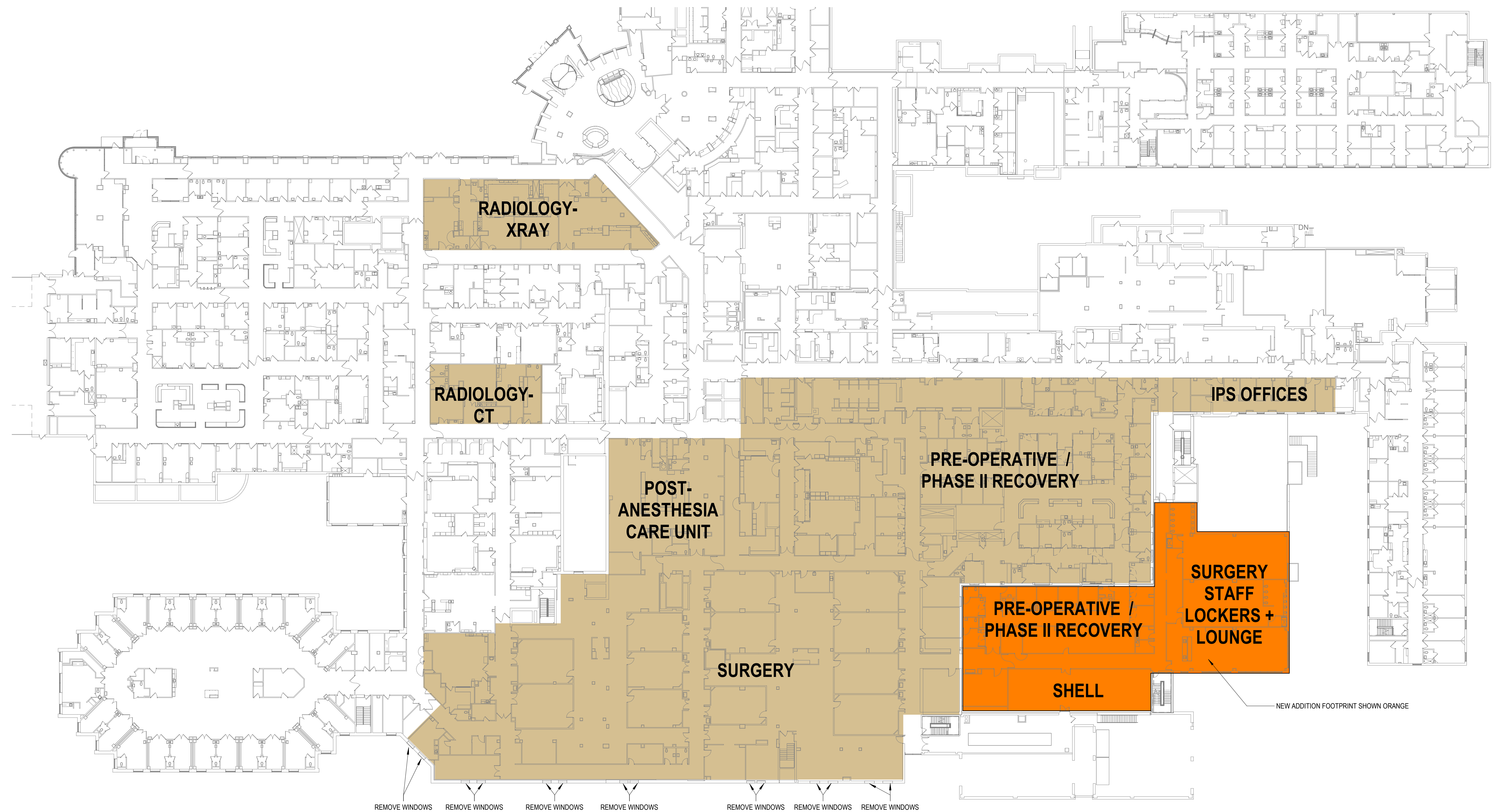




**2** 2ND FLR IPS SCOPE  
1" = 30'-0" | PG01

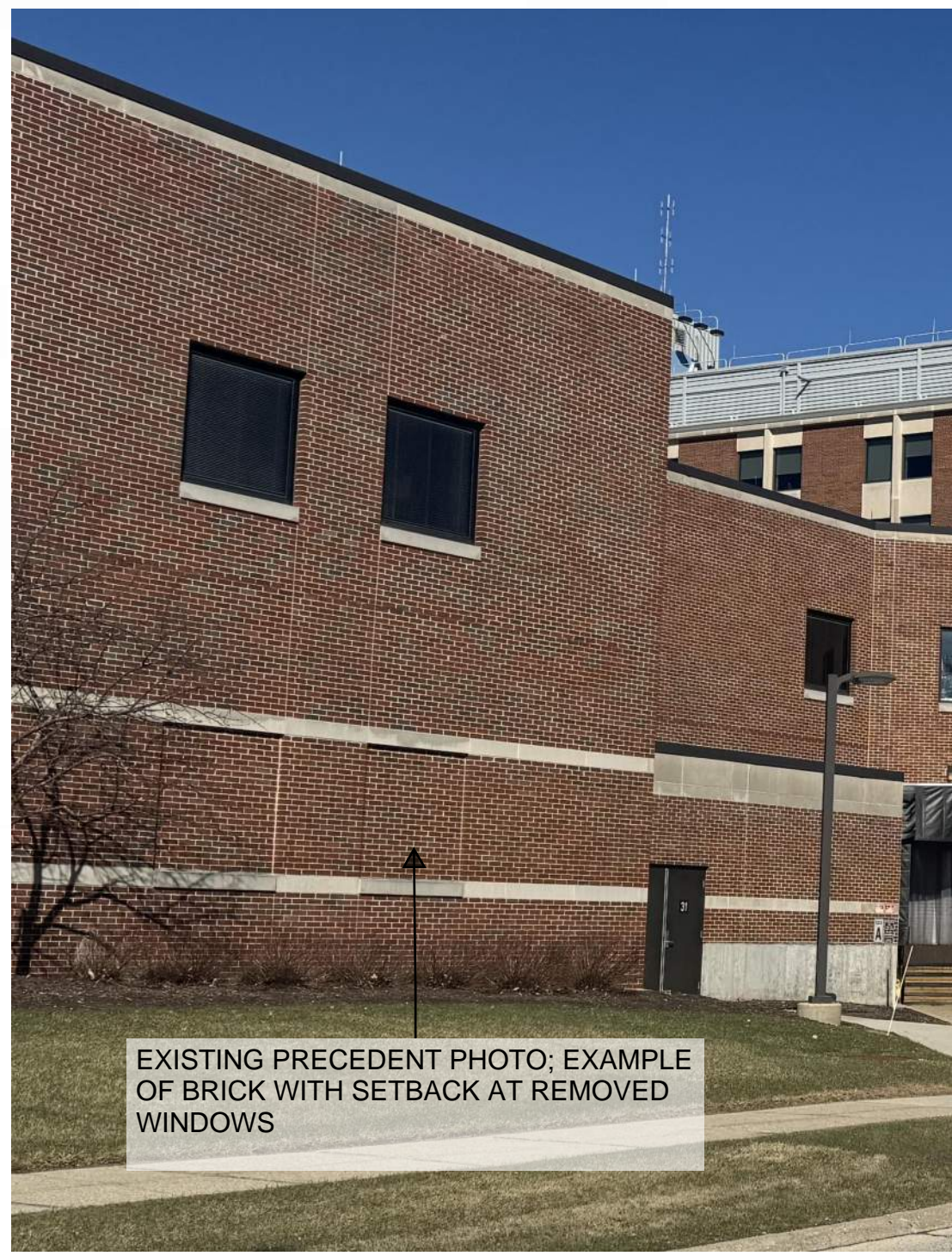


**3** LOWER LEVEL IPS SCOPE  
1" = 30'-0" | PG01



**1** 1ST FLR IPS SCOPE  
1" = 30'-0" | PG01





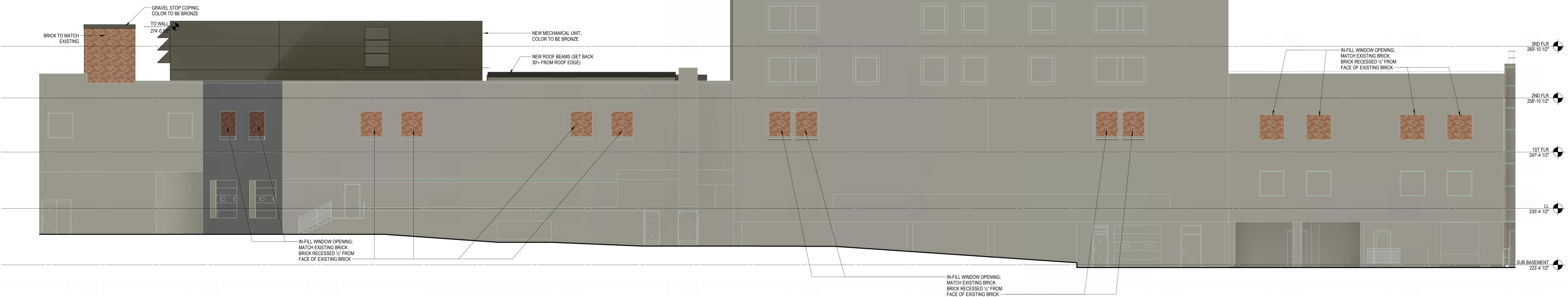
9 VIEW FROM DOPP ST  
1/12" = 1'-0" | PC02

8 AXON FROM SOUTH EAST  
1/12" = 1'-0" | PC02

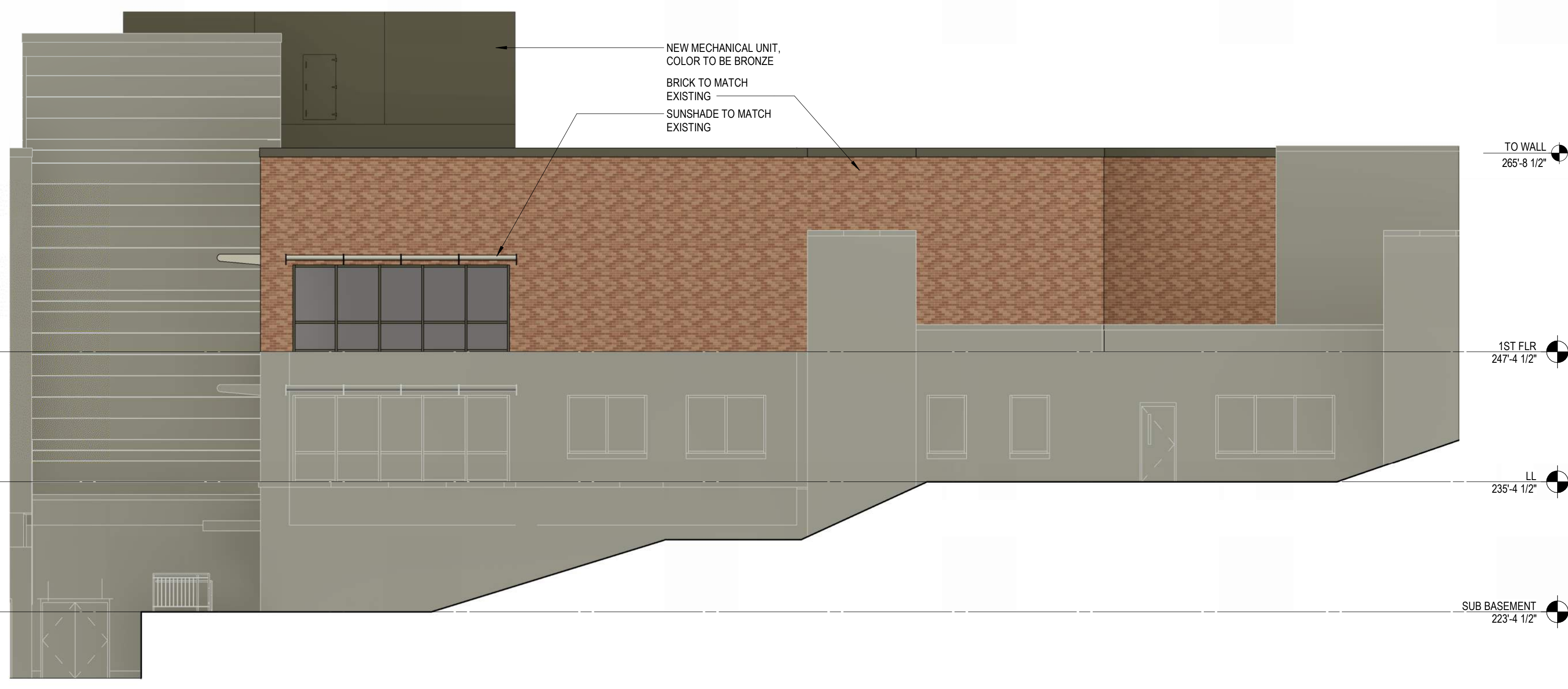
5 STAIR EXTENSION NORTH ELEV  
1/8" = 1'-0" | PC02

6 STAIR EXTENSION EAST ELEV  
1/8" = 1'-0" | PC02

7 STAIR EXTENSION WEST ELEV  
1/8" = 1'-0" | PC02



1 SURGICAL SUPPORT ADDITION SOUTH ELEVATION  
1/8" = 1'-0" | PC02



2 SURGICAL SUPPORT ADDITION EAST ELEVATION  
1/8" = 1'-0" | PC02

4 OR REMODEL SOUTH ELEVATION  
1/8" = 1'-0" | PC02



3 SURGICAL SUPPORT ADDITION NORTH ELEVATION  
1/8" = 1'-0" | PC02