

PROPOSED FACILITY FOR:

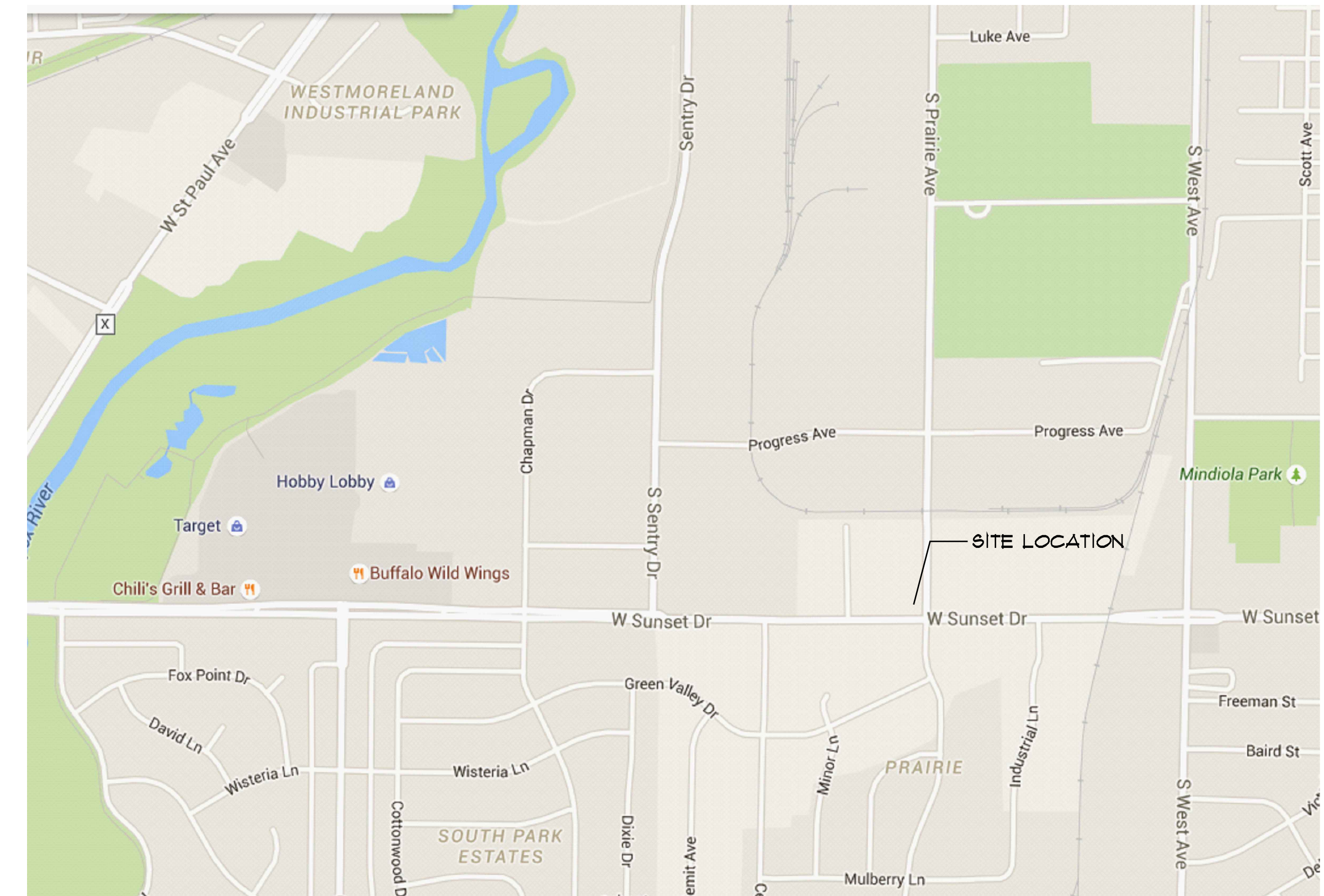
KLINKE COMMERCIAL DEVELOPMENT

SUNSET DRIVE
Waukesha, Wisconsin

TJK TJK Design Build
DESIGN BUILD
612 W. Main
Madison, WI 53703
608-257-1092 FAX 608-257-1092

INDEX OF DRAWINGS:

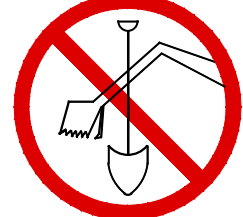
- C-1.0 EXISTING / DEMO SITE PLAN
- C-1.1 PROPOSED SITE PLAN
- C-1.2 SITE GRADING PLAN
- C-1.3 SITE UTILITY PLAN
- A-1.1 FLOOR PLAN
- A-2.1 EXTERIOR ELEVATIONS



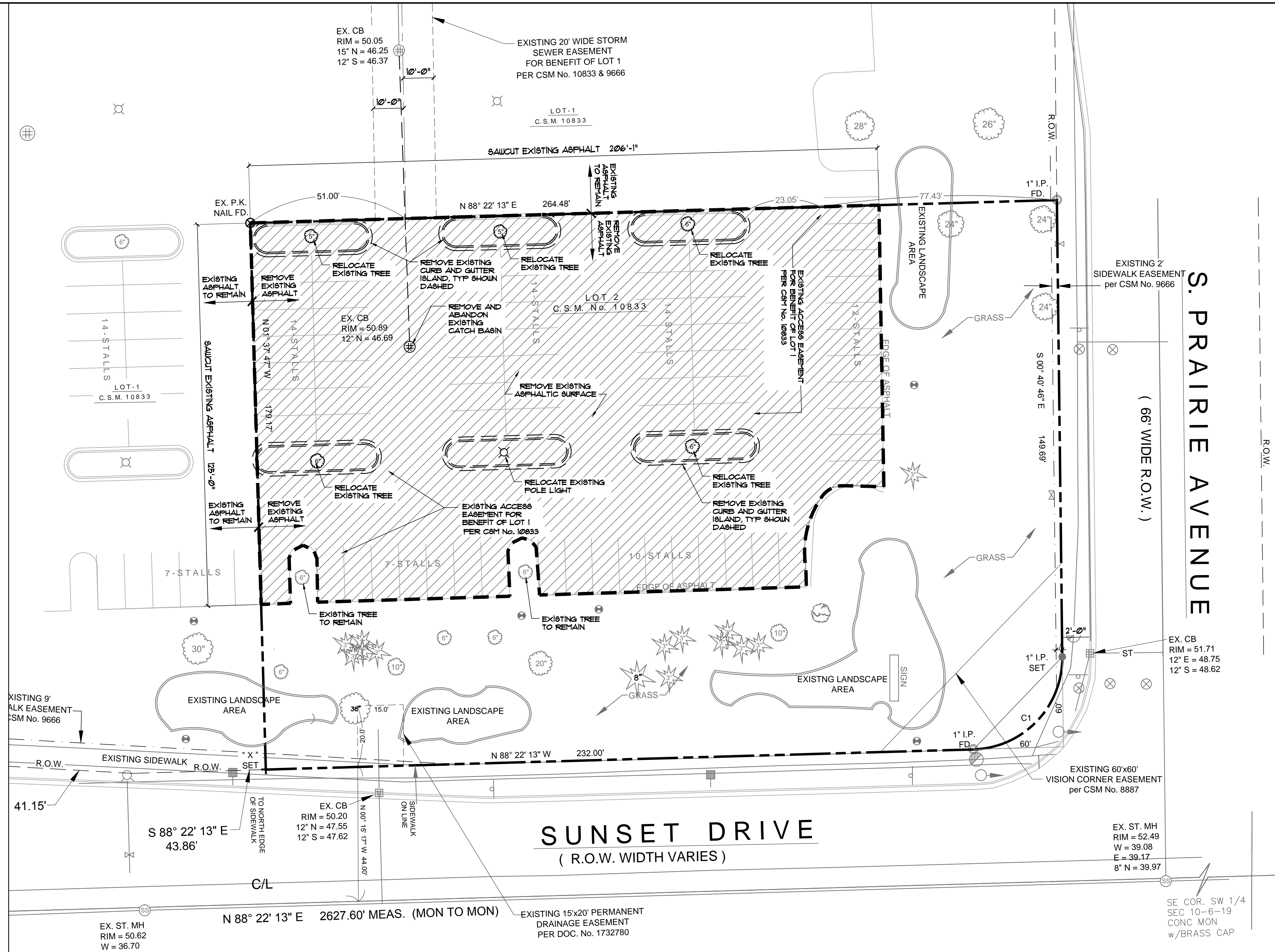
SITE LOCATION MAP

- LEGEND:**
- PROPERTY CORNER
 - PROPERTY LINE
 - SAN SANITARY SEWER
 - STH STORM SEWER
 - W WATER MAIN
 - ⊕ FIRE HYDRANT
 - ⊕ UTILITY POLE
 - ⊕ UTILITY POLE W/ LIGHT
 - MANHOLE
 - ⊕ WATER VALVE
 - CURB INLET
 - ⊕ STORM SEWER ACCESS COVER
 - ⊕ SPOT ELEVATION
 - ⊕ MONITORING WELL
 - ▨ EXISTING BUILDING

TO OBTAIN LOCATIONS OF PARTICIPANTS UNDERGROUND FACILITIES BEFORE YOU DIG IN WISCONSIN

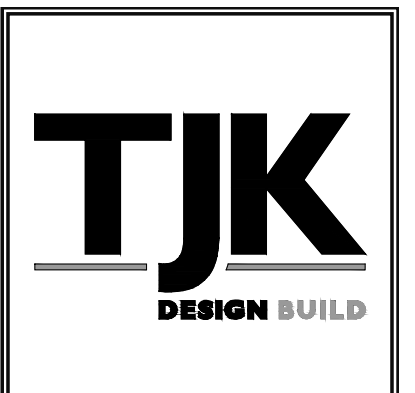


CALL DIGGERS HOTLINE
1-800-242-8811
TOLL FREE
WIS STATUTE 102.07(1)(14)
REQUIRES MIN. 3 WORK DAYS
NOTICE BEFORE YOU EXCAVATE



1 DEMO SITE PLAN
C-1.0 SCALE: 1" = 20' - 0"

SCALE 1" = 20'-0"



612 WEST MAIN STREET
MADISON, WI 53703
608-257-1090
FAX 608-257-1092

REV	DATE

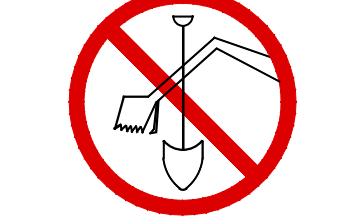
COPYRIGHTED DRAWING
© 2011, TJK Design Build, Inc. ALL RIGHTS RESERVED. NEITHER THIS DOCUMENT NOR THE INFORMATION HEREIN MAY BE REPRODUCED, DISTRIBUTED, USED OR DISCLOSED, IN WHOLE OR IN PART, UNLESS EXPRESSLY AUTHORIZED IN WRITING BY TJK Design Build, Inc.

PROPOSED FACILITY FOR:
KLINKE COMMERCIAL DEVELOPMENT
SUNSET DRIVE
WAUKESHA, WISCONSIN

C-1.0
8.10.15

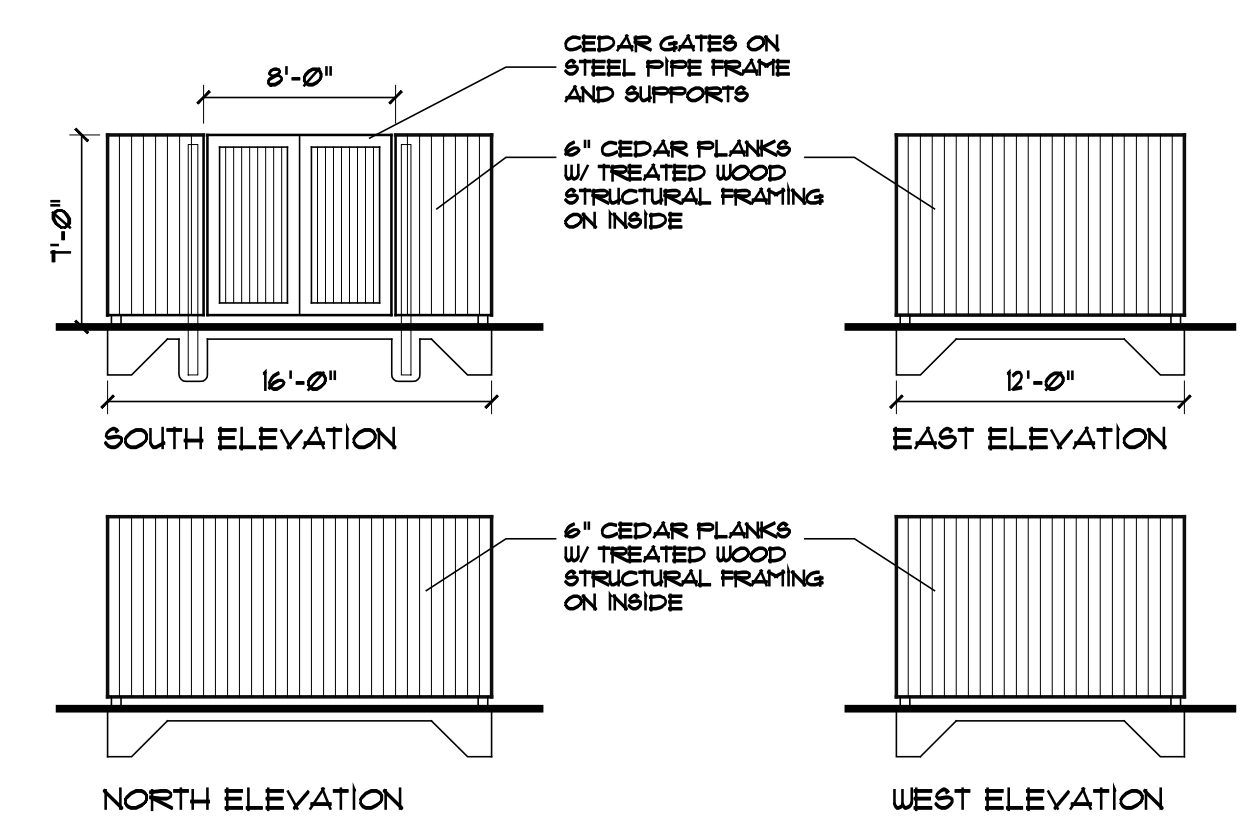
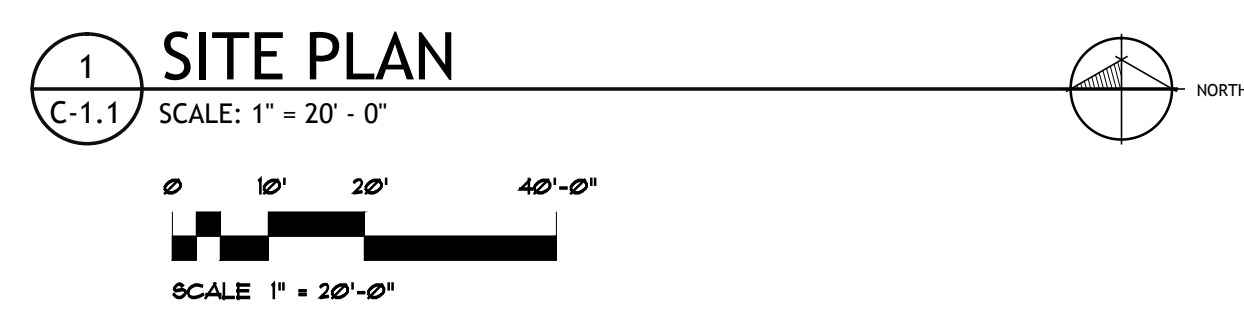
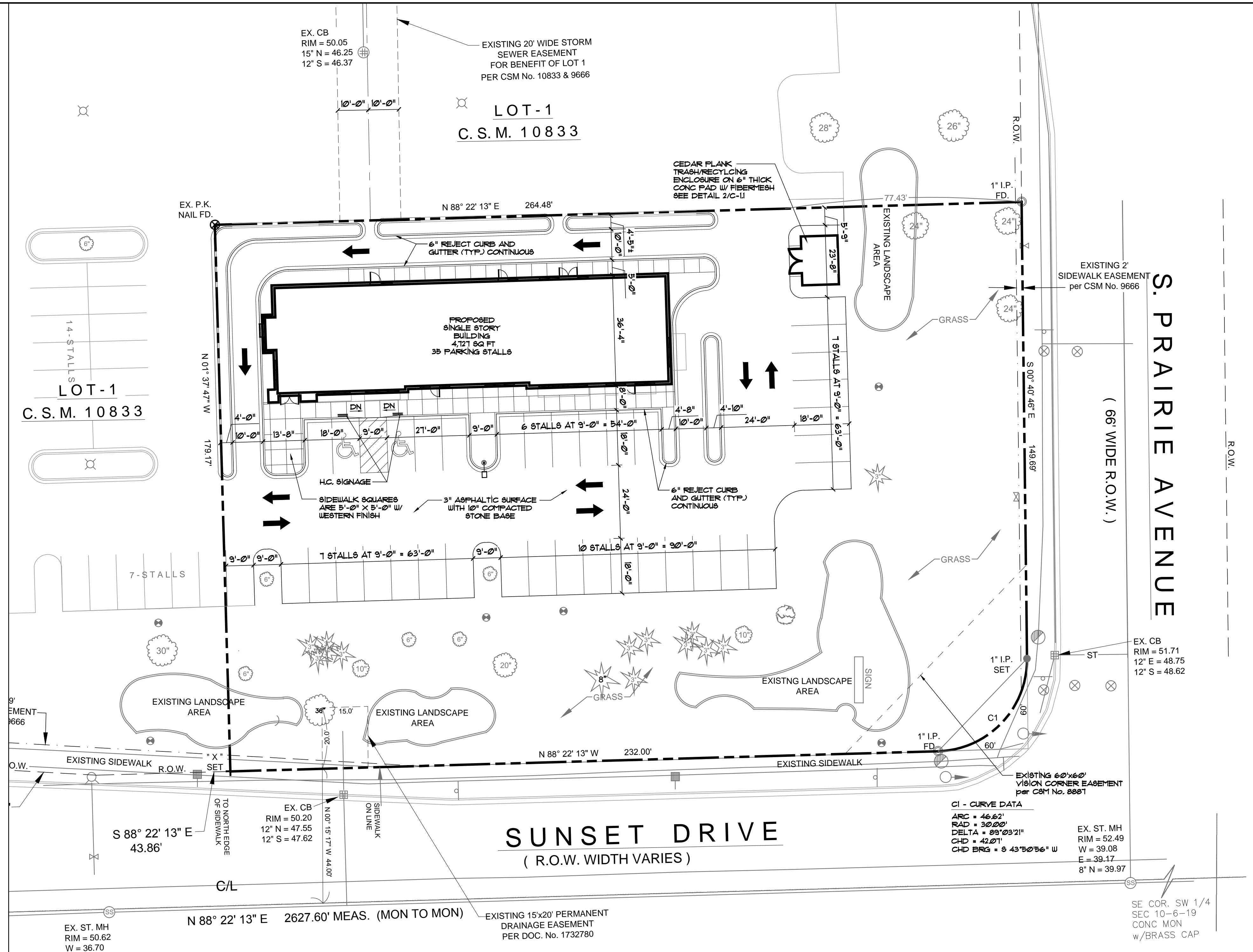
- LEGEND:**
- PROPERTY CORNER
 - PROPERTY LINE
 - SAN SANITARY SEWER
 - STH STORM SEWER
 - W WATER MAIN
 - ⊕ FIRE HYDRANT
 - ⊕ UTILITY POLE
 - ⊕ UTILITY POLE W/ LIGHT
 - MANHOLE
 - ⊕ WATER VALVE
 - CURB INLET
 - ⊕ STORM SEWER ACCESS COVER
 - ⊕ SPOT ELEVATION
 - ⊕ MONITORING WELL
 - ▨ EXISTING BUILDING

TO OBTAIN LOCATIONS OF PARTICIPANTS UNDERGROUND FACILITIES BEFORE YOU DIG IN WISCONSIN

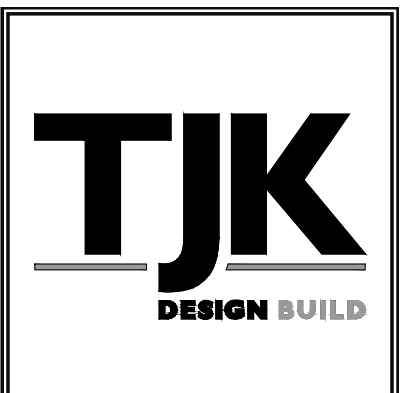


CALL DIGGERS HOTLINE
1-800-242-8811
TOLL FREE
WS STATUTE 102.07(1)(14)
REQUIRED MIN. 3 WORK DAYS
NOTICE BEFORE YOU EXCAVATE

- GENERAL NOTES:**
- ALL PAINT STRIPPING SHALL BE 4" WIDE, YELLOW
 - H.C. CURB CUTS AND RAMPS PER ADA SEC. 41 MAX. SLOPE TO BE 1:12, MIN. WIDTH TO BE 36", FLARE SIDES 12" EACH SIDE WITH MAX. SLOPE OF 1:10. AREA TO BE COLORED CONCRETE WITH TEXTURE IN COMPLIANCE WITH ADA REQUIREMENTS
 - ALL DIMENSIONS ARE FROM FACE OF CONCRETE WALL, FACE OF CURB OR CENTER OF PROPERTY LINE.
 - BITUMINOUS PAVING IS 3" SURFACE COURSE ON 10" COMPACTED STONE BASE
 - ALL EXTERIOR CONCRETE SIDEWALKS TO BE 6" BAG MIX WITH WESTERN FINISH 4" THICK W/ W/F REINFORCING ON 6" COMPACTED FILL.
 - WATER SERVICE MATERIAL SHALL BE CL 51 D.I.
 - SEWER AND WATER CONSTRUCTION SHALL BE COMPLETED IN ACCORDANCE WITH THE CITY OF WAUKESHA STANDARD SPECIFICATIONS FOR PUBLIC WORKS CONSTRUCTION
 - FIRE PROTECTION SHALL BE PROVIDED IN ACCORDANCE WITH THE REQUIREMENTS OF THE FIRE DEPARTMENT
 - SIDEWALKS AND DRIVEWAY APRON CONSTRUCTION WITHIN THE PUBLIC RIGHTS OF WAY SHALL BE CONSTRUCTED IN ACCORDANCE WITH THE CITY OF WAUKESHA STANDARD SPECIFICATIONS FOR PUBLIC WORKS CONSTRUCTION
 - DURING CONSTRUCTION REMOVE CASTING GRATE ON ALL CATCH BASINS INSTALL WATER PERMEABLE MEMBRANE FOR SILT INFILTRATION PROTECTION AND REINSTALL CASTING GRATE. SECURE MEMBRANE IN THE FLOW LINE WITH 2X4 MATERIAL, MINIMUM
 - EXISTING WATER MAIN VALVES SHALL BE MARKED AND PROTECTED FOR DURATION OF CONSTRUCTION
 - SLOPES GREATER THAN 3:1 SHALL BE LINED WITH EROSION MATTING
 - TRACKED MATERIAL SHALL BE COLLECTED BY THE GENERAL CONTRACTOR AT THE END OF EACH WORKING DAY OR AS REQUIRED BY THE CITY
 - PROVIDE KNOX BOX FOR THE FIRE DEPARTMENT. CO-ORDINATE LOCATION WITH FIRE DEPARTMENT PRIOR TO INSTALLATION
 - ALL "STOP" SIGNS ARE TO BE INSTALLED AT A HEIGHT OF 1 FEET AT ALL DRIVEWAY APPROACHES BEHIND THE PROPERTY LINE
 - THE PUBLIC WORKS DEPARTMENT SHALL BE NOTIFIED A MINIMUM OF 48 HOURS BEFORE THE START OF WORK IN THE RIGHT OF WAY OR UTILITY CONNECTIONS



2 TRASH ENCLOSURE DETAIL
C-1.1 NO SCALE



612 WEST MAIN STREET
MADISON, WI 53703
608-257-1090
FAX 608-257-1092

REV	DATE

COPYRIGHTED DRAWING
© 2011 TJK Design Build, Inc. ALL RIGHTS RESERVED. NEITHER THIS DOCUMENT NOR THE INFORMATION HEREIN MAY BE REPRODUCED, DISTRIBUTED, USED OR DISCLOSED, IN WHOLE OR IN PART, UNLESS EXPRESSLY AUTHORIZED IN WRITING BY TJK Design Build, Inc.

PROPOSED FACILITY FOR:
KLINKE COMMERCIAL DEVELOPMENT
SUNSET DRIVE
WAUKESHA, WISCONSIN

C-1.1
8.10.15

CONSTRUCTION SEQUENCE:

1. INSTALL TRACKING PAD, SILT FENCE AND INLET PROTECTION ON EXISTING STORM STRUCTURES.
2. GRADE SITE. TEMPORARY SEEDING SHALL BE PROVIDED, AS NECESSARY.
3. INSTALL UTILITIES.
4. CONSTRUCT BUILDING.
5. PLACE GRAVEL FOR PAVED AREAS.
6. INSTALL CONCRETE CURB AND SIDEWALKS.
7. PLACE ASPHALT PAVEMENT.
8. FINAL SEEDING, MULCHING, AND FERTILIZING.
9. MAINTAIN EROSION CONTROL MEASURES UNTIL THE SITE IS VEGETATED. UPON APPROVAL FROM THE COUNTY, ALL TEMPORARY EROSION MEASURES SHALL BE REMOVED.

4. ALL CONSTRUCTION TRAFFIC IS TO ENTER/EXIT THE SITE OVER THE TRACKING PADS. ALL PUBLIC STREETS ARE TO BE KEPT CLEAN AT ALL TIMES.
5. UPON SITE STABILIZATION AND COUNTY APPROVAL, REMOVE AND DISPOSE OF ALL EROSION CONTROL MATERIALS.
6. THE SEED MIXTURE SHALL BE 65% KENTUCKY BLUEGRASS, 20% FINE FESCUES, 15% PERENNIAL RYE GRASS AT THE RATE OF 3-4 LBS/1000 SQ. FT. UP TO SEPTEMBER 15. FOLLOW THE LATE SEASON STABILIZATION NOTES TO DETERMINE PLANTING SCHEDULE IF SEPTEMBER 15 DEADLINE IS MISSED.
7. FERTILIZE SOIL WITH 10 LBS/1000 SQ. FT. OF 20-10-10 FERTILIZER.
8. MULCH ALL SEEDED AREAS.
9. TEMPORARY STABILIZATION IS REQUIRED FOR ANY AREA LEFT INACTIVE FOR 7 DAYS.
10. IF NEEDED, DUST CONTROL SHALL MEET THE DNR TECHNICAL STANDARD 1068.
11. AREAS OF FINAL GRADING SHALL BE STABILIZED WITHIN 7 DAYS.

LATE SEASON STABILIZATION:

THE OBJECTIVE IS TO STABILIZE THE SITE WITH 70% VEGETATIVE COVERAGE OF ALL PVIOUSLY DISTURBED AREAS BEFORE THE END OF THE GROWING SEASON. THIS WILL BE DONE BY SEEDING OF ALL DISTURBED AREAS WITH PERMANENT VEGETATION BY SEPTEMBER 15, 2015. IF THIS DEADLINE IS MISSED, THEN STABILIZATION WILL BE COMPLETED BY:

1. SEEDING OF ALL DISTURBED AREAS WITH TEMPORARY SEED MIX (OATS, WINTER WHEAT, ANNUAL RYE) BY OCTOBER 15. PERMANENT SEED MIX MUST THEN BE IMPLEMENTED BY JUNE 1 OF THE FOLLOWING YEAR.
2. IF THE OCTOBER 15 DEADLINE IS MISSED, COVERAGE OF ALL DISTURBED AREAS BY NOVEMBER 1 WITH:
 - a. TOPSOIL, SEED, AND THE MATERIAL CALLED FOR IN THE APPROVED STABILIZATION PLANS, WHERE TOPSOIL, SEED, AND EROSION CONTROL MATTING IS CALLED FOR.
 - b. TOPSOIL, SEED, AND TYPE A SOIL STABILIZER FROM THE WDOT PRODUCT ACCEPTABILITY LIST OR OTHER METHOD APPROVED BY THE LRD FOR ALL AREAS WHERE, SEED, TOPSOIL, AND MULCH IS CALLED FOR IN THE APPROVED PLANS.
3. IF THE NOVEMBER 1 DEADLINE HAS BEEN MISSED, AND THE LRD STAFF HAS DETERMINED THAT IT IS INFEASIBLE TO RE-APPLY TOPSOIL, THE PERMIT APPLICANT SHALL:
 - a. APPLY TYPE A STABILIZER FROM THE WDOT PRODUCT ACCEPTABILITY LIST TO ALL DISTURBED AREAS.
 - b. INSTALL DITCH CHECKS IN ALL DITCHES WITH SLOPE GREATER THAN 0.5% AT INTERVALS SUCH THAT THE TOP OF THE DOWNHILL DITCH CHECK IS AT THE ELEVATION OF THE FOOT OF THE UPHILL DITCH CHECK. DITCH CHECKS SHALL BE EITHER:
 - i. TRIANGULAR FOAM-CORE
 - ii. STONE INSTALLED PER THE WDRN TECHNICAL STANDARD
 - iii. COMPOST-FILLED TUBES, OR
 - iv. COMPARABLE PRODUCT AS APPROVED BY THE LRD STAFF.

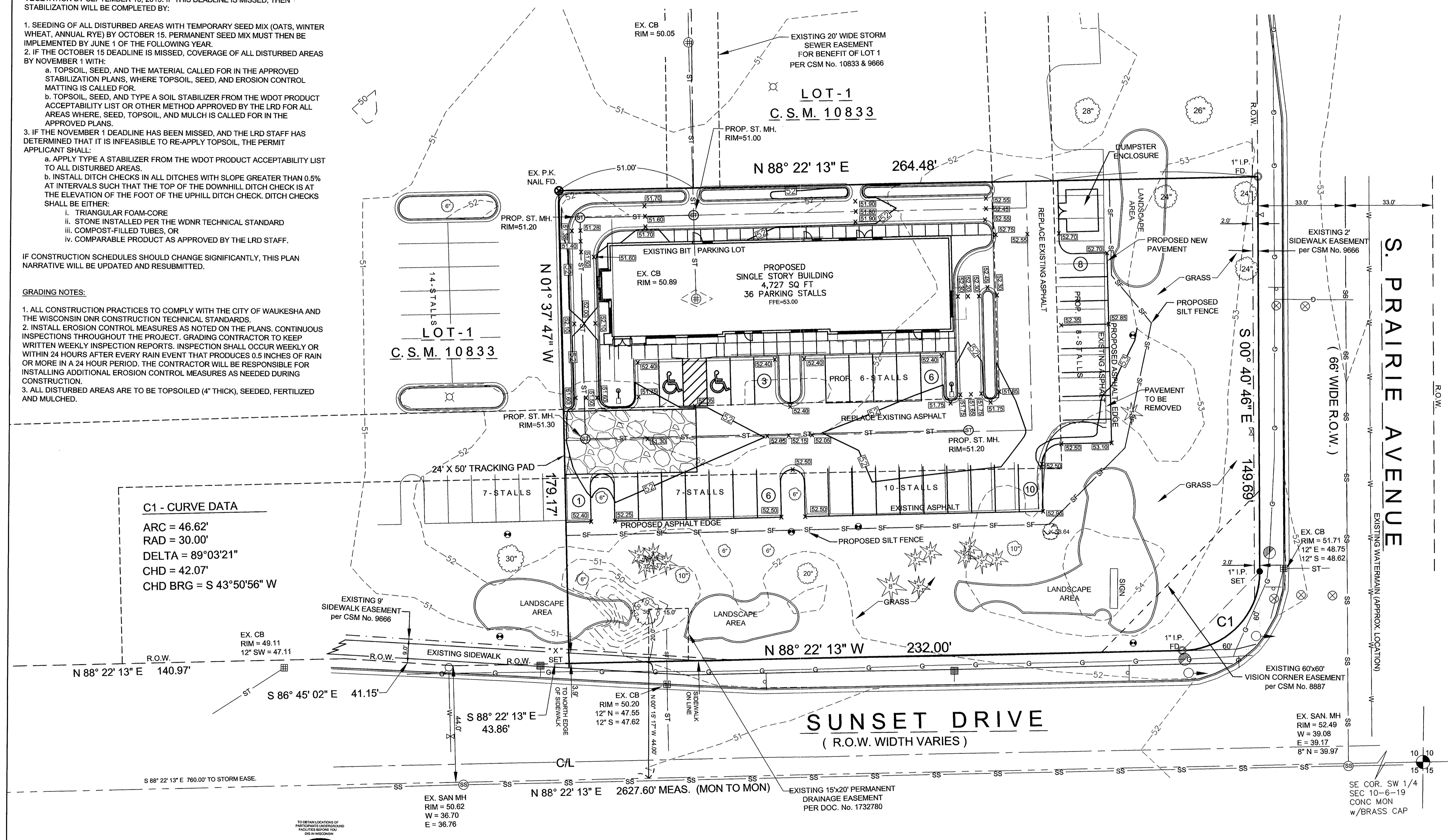
IF CONSTRUCTION SCHEDULES SHOULD CHANGE SIGNIFICANTLY, THIS PLAN NARRATIVE WILL BE UPDATED AND RESUBMITTED.

GRADING NOTES:

1. ALL CONSTRUCTION PRACTICES TO COMPLY WITH THE CITY OF WAUKESHA AND THE WISCONSIN DNR CONSTRUCTION TECHNICAL STANDARDS.
2. INSTALL EROSION CONTROL MEASURES AS NOTED ON THE PLANS. CONTINUOUS INSPECTIONS THROUGHOUT THE PROJECT. GRADING CONTRACTOR TO KEEP WRITTEN WEEKLY INSPECTION REPORTS. INSPECTION SHALL OCCUR WEEKLY OR WITHIN 24 HOURS AFTER EVERY RAIN EVENT THAT PRODUCES 0.5 INCHES OF RAIN OR MORE IN A 24 HOUR PERIOD. THE CONTRACTOR WILL BE RESPONSIBLE FOR INSTALLING ADDITIONAL EROSION CONTROL MEASURES AS NEEDED DURING CONSTRUCTION.
3. ALL DISTURBED AREAS ARE TO BE TOPSOILED (4" THICK), SEEDED, FERTILIZED AND MULCHED.

C1 - CURVE DATA
 ARC = 46.62'
 RAD = 30.00'
 DELTA = 89°03'21"
 CHD = 42.07'
 CHD BRG = S 43°50'56" W

- LEGEND:**
- EX. MONUMENT FOUND
 - EX. 1" IRON PIPE FOUND
 - EX. P.K. NAIL FOUND
 - 1" IRON PIPE SET
 - CHISELED CROSS SET
 - SANITARY MANHOLE
 - STORM MANHOLE
 - EX. TRAFFIC SIGNAL
 - EX. GAS VALVE
 - EX. WATER VALVE
 - EX. HYDRANT
 - EX. PULL BOX
 - EX. SPRINKLER HEAD
 - EX. LIGHT POLE
 - EX. STORM CATCH BASIN
 - EX. POWER POLE
 - EX. CONIFEROUS TREE
 - EX. DECIDUOUS TREE
 - EX. BUSH
 - ST - STORM SEWER
 - SS - SANITARY SEWER
 - W - WATER MAIN
 - G - GAS MAIN
 - 50 - EX. 5' CONTOUR
 - 49 - EX. 1' CONTOUR
 - 52 - PROPOSED CONTOUR



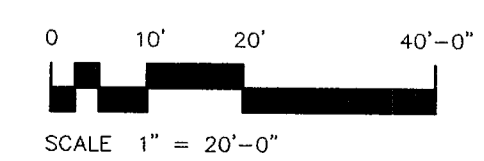
TO BE NOTIFIED OF PARTICIPANTS AND/OR SCHEDULED BEFORE THE DATE IN RED CIRCLES
 CALL DIGGERS HOTLINE 1-800-242-8511
 TOLL FREE
 SEE INSTRUCTIONS FOR PARTICIPANTS AND/OR SCHEDULED BEFORE THE DATE IN RED CIRCLES
 MILW. AREA 259-1181

STATE OF WISCONSIN }
 COUNTY OF WAUKESHA } ss. _____
 WE, JAHNKE & JAHNKE ASSOCIATES INC., DO HEREBY CERTIFY THAT WE HAVE MADE THIS SURVEY AND THAT THE INFORMATION AS SHOWN ON THE ABOVE PLAT OF SURVEY IS TRUE AND CORRECT REPRESENTATION THEREOF.

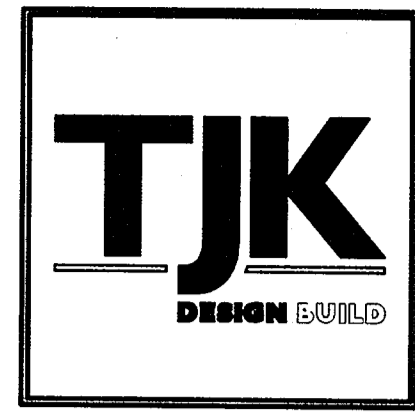
John R. Stigler
 JOHN R. STIGLER, WIS. REG. NO. S-1820
 WAUKESHA, WI
 LAND SURVEYOR

WISCONSIN
 JOSHUA V. RADZICKI
 C-43312
 WAUKESHA, WI
 PROFESSIONAL ENGINEER

1 GRADING PLAN
 C-1.2 SCALE: 1" = 20' - 0"



"THE INFORMATION SHOWN ON THIS DRAWING CONCERNING TYPE AND LOCATION OF UNDERGROUND UTILITIES IS NOT GUARANTEED TO BE ACCURATE OR ALL INCLUSIVE. THE CONTRACTOR IS RESPONSIBLE FOR MAKING HIS OWN DETERMINATIONS AS TO THE TYPE AND LOCATION OF UNDERGROUND UTILITIES AS MAY BE NECESSARY TO AVOID DAMAGE THERETO."



612 WEST MAIN STREET
 MADISON, WI 53703
 608-257-1090
 FAX 608-257-1092

REV	DATE

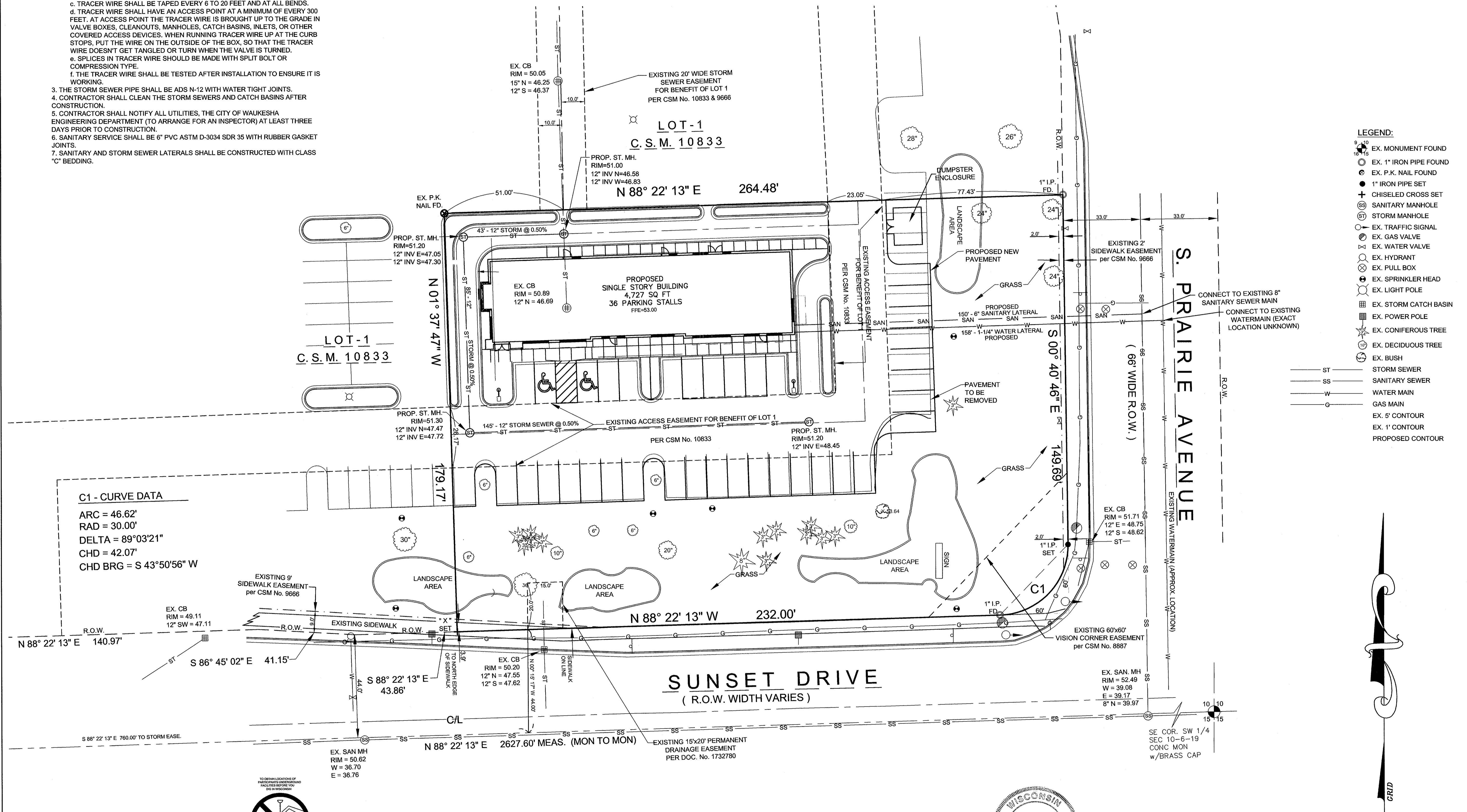
COPYRIGHTED DRAWING
 © 2011, TJK Design Build, Inc. ALL RIGHTS RESERVED. NEITHER THIS DOCUMENT NOR THE INFORMATION HEREIN MAY BE REPRODUCED, DISTRIBUTED, USED OR DISCLOSED, IN WHOLE OR IN PART, UNLESS EXPRESSLY AUTHORIZED IN WRITING BY TJK Design Build, Inc.

SUNSET DRIVE
 WAUKESHA, WISCONSIN
 FILE NAME: S:\PROJECTS\58396.dwg
 FILE NO. WAUKESHA 1169
 BOOK: WAUKESHA 191
 JOB: S-8396

PROPOSED FACILITY FOR:
KLINKE COMMERCIAL DEVELOPMENT
JAHNKE & JAHNKE ASSOCIATES INC.
 PLANNERS & PROFESSIONAL ENGINEERS
 711 W. MORELAND BLVD. - WAUKESHA, WI 53188
 TEL. No. (262)542-5797 FAX (262)542-7898
 E-MAIL jstigler@jahnkeandjahnke.com

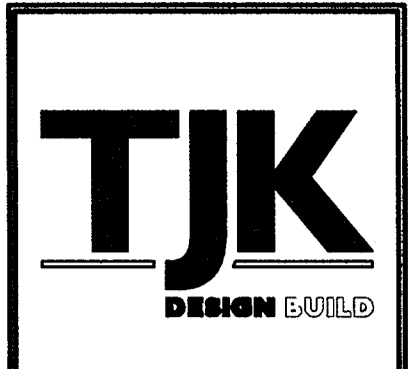
C-1.2
 8.10.15

- UTILITY NOTES**
- INLETS, CATCH BASINS, MANHOLES, ETC., SHALL BE CONSTRUCTED IN A WATER TIGHT MANNER OF PRECAST REINFORCED CONCRETE, REINFORCED MONOLITHIC CONCRETE, BRICK BLOCK OR FIBERGLASS.
 - SANITARY SEWER AND STORM SEWER MUST BE PROVIDED WITH TRACER WIRE IN ACCORD WITH 182.0715(2r) OF THE STATUTES.
 - 12 GAUGE SOLID COPPER WIRE WITH A PLASTIC COATING.
 - TRACER WIRE SHALL BE TAPED TO THE TOP OF PLASTIC WATER OR SEWER PIPE.
 - TRACER WIRE SHALL BE TAPED EVERY 6 TO 20 FEET AND AT ALL BENDS.
 - TRACER WIRE SHALL HAVE AN ACCESS POINT AT A MINIMUM OF EVERY 300 FEET. AT ACCESS POINT THE TRACER WIRE IS BROUGHT UP TO THE GRADE IN VALVE BOXES, CLEANOUTS, MANHOLES, CATCH BASINS, INLETS, OR OTHER COVERED ACCESS DEVICES. WHEN RUNNING TRACER WIRE UP AT THE CURB STOPS, PUT THE WIRE ON THE OUTSIDE OF THE BOX, SO THAT THE TRACER WIRE DOESN'T GET TANGLED OR TURN WHEN THE VALVE IS TURNED.
 - SPLICES IN TRACER WIRE SHOULD BE MADE WITH SPLIT BOLT OR COMPRESSION TYPE.
 - THE TRACER WIRE SHALL BE TESTED AFTER INSTALLATION TO ENSURE IT IS WORKING.
 - THE STORM SEWER PIPE SHALL BE ADS N-12 WITH WATER TIGHT JOINTS.
 - CONTRACTOR SHALL CLEAN THE STORM SEWERS AND CATCH BASINS AFTER CONSTRUCTION.
 - CONTRACTOR SHALL NOTIFY ALL UTILITIES, THE CITY OF WAUKESHA ENGINEERING DEPARTMENT (TO ARRANGE FOR AN INSPECTOR) AT LEAST THREE DAYS PRIOR TO CONSTRUCTION.
 - SANITARY SERVICE SHALL BE 6" PVC ASTM D-3034 SDR 35 WITH RUBBER GASKET JOINTS.
 - SANITARY AND STORM SEWER LATERALS SHALL BE CONSTRUCTED WITH CLASS "C" BEDDING.



C1 - CURVE DATA
 ARC = 46.62'
 RAD = 30.00'
 DELTA = 89°03'21"
 CHD = 42.07'
 CHD BRG = S 43°50'56" W

- LEGEND:**
- EX. MONUMENT FOUND
 - EX. 1" IRON PIPE FOUND
 - EX. P.K. NAIL FOUND
 - 1" IRON PIPE SET
 - CHISELED CROSS SET
 - SANITARY MANHOLE
 - STORM MANHOLE
 - EX. TRAFFIC SIGNAL
 - EX. GAS VALVE
 - EX. WATER VALVE
 - EX. HYDRANT
 - EX. PULL BOX
 - EX. SPRINKLER HEAD
 - EX. LIGHT POLE
 - EX. STORM CATCH BASIN
 - EX. POWER POLE
 - EX. CONIFEROUS TREE
 - EX. DECIDUOUS TREE
 - EX. BUSH
 - ST - STORM SEWER
 - SS - SANITARY SEWER
 - W - WATER MAIN
 - G - GAS MAIN
 - EX. 5' CONTOUR
 - EX. 1' CONTOUR
 - PROPOSED CONTOUR



612 WEST MAIN STREET
 MADISON, WI 53703
 608-257-1090
 FAX 608-257-1092

REV	DATE

COPYRIGHTED DRAWING
 © 2011, TJK Design Build, Inc. ALL RIGHTS RESERVED. NEITHER THIS DOCUMENT NOR THE INFORMATION HEREIN MAY BE REPRODUCED, DISTRIBUTED, USED OR DISCLOSED, IN WHOLE OR IN PART, UNLESS EXPRESSLY AUTHORIZED IN WRITING BY TJK Design Build, Inc.

SUNSET DRIVE
 WAUKESHA, WISCONSIN
 FILE NAME: S:\PROJECTS\58396.dwg
 FILE NO: WAUKESHA 1169
 BOOK: WAUKESHA 191
 JOB: S-8396

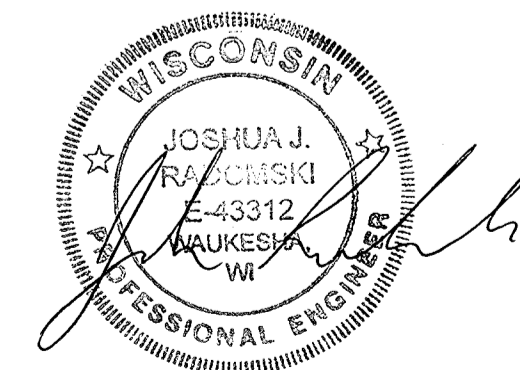
PROPOSED FACILITY FOR:
KLINKE COMMERCIAL DEVELOPMENT
JAHNKE & JAHNKE ASSOCIATES INC.
 PLANNERS & PROFESSIONAL ENGINEERS
 711 W. MORELAND BLVD. - WAUKESHA, WI 53188
 TEL. No. (262)542-5797 FAX (262)542-7698
 E-MAIL jrdomski@jahnkeandjahnke.com

C-1.3

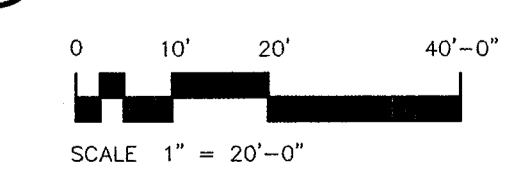
"THE INFORMATION SHOWN ON THIS DRAWING CONCERNING TYPE AND LOCATION OF UNDERGROUND UTILITIES IS NOT GUARANTEED TO BE ACCURATE OR ALL INCLUSIVE. THE CONTRACTOR IS RESPONSIBLE FOR MAKING HIS OWN DETERMINATIONS AS TO THE TYPE AND LOCATION OF UNDERGROUND UTILITIES AS MAY BE NECESSARY TO AVOID DAMAGE THERETO."

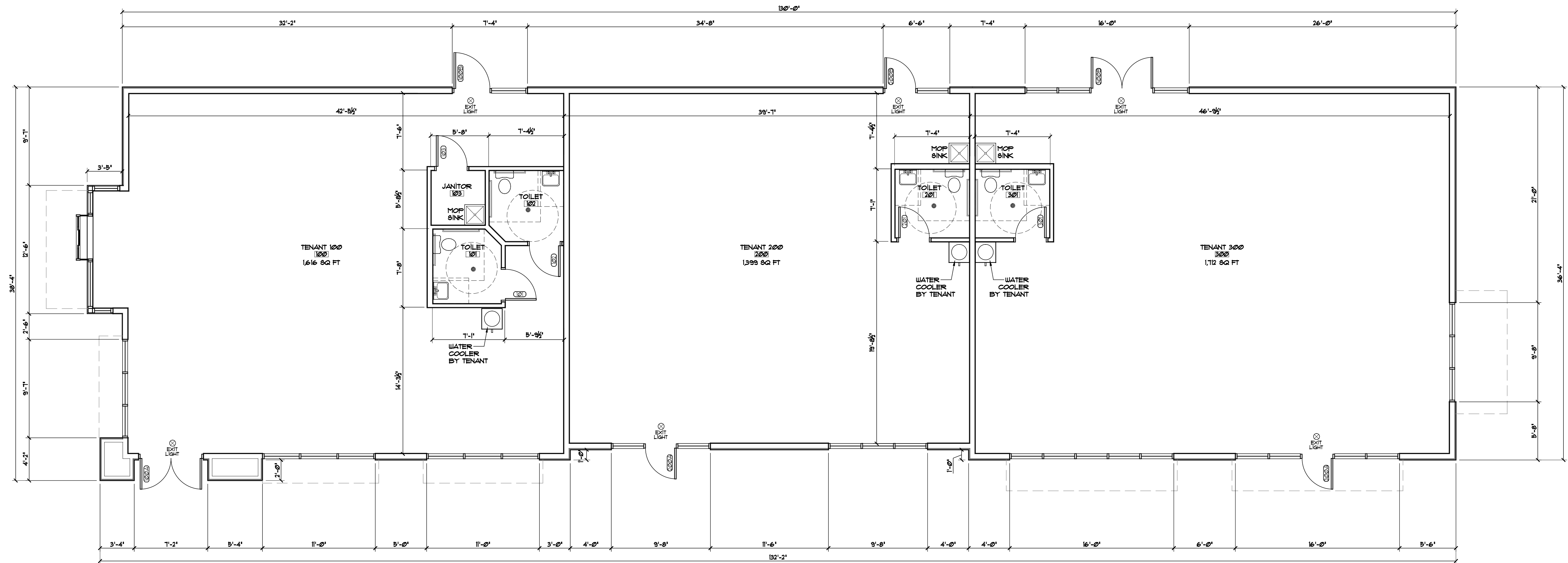


CALL DIGGERS HOTLINE
 1-800-242-8511
 TOLL FREE
 48 HOURS A DAY
 7 DAYS A WEEK
 M/W. AREA 259-1181



UTILITY PLAN
 C-1.3
 SCALE: 1" = 20'-0"

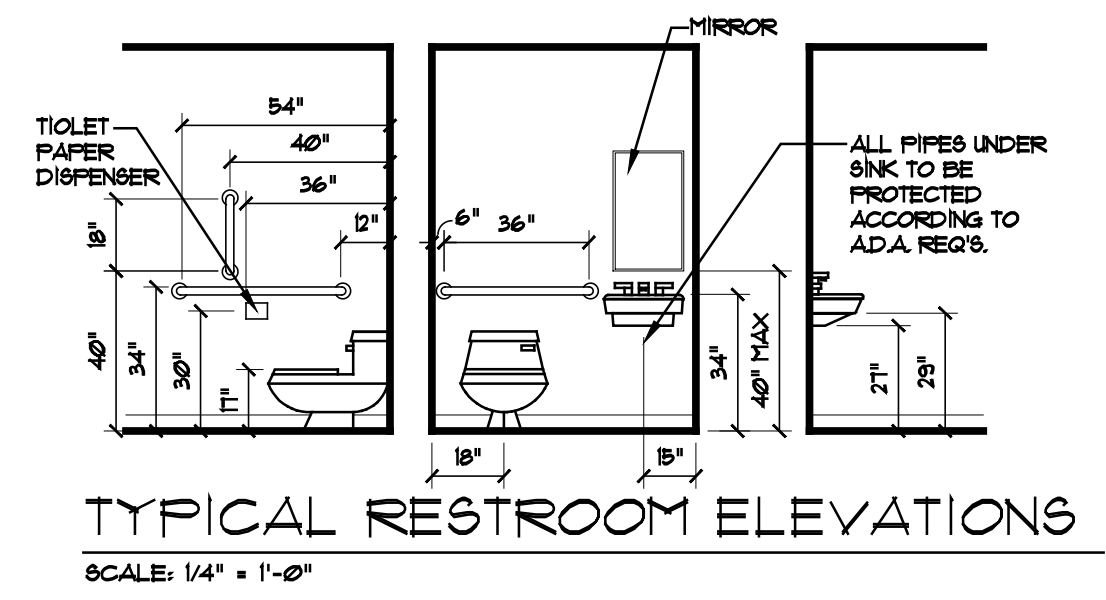




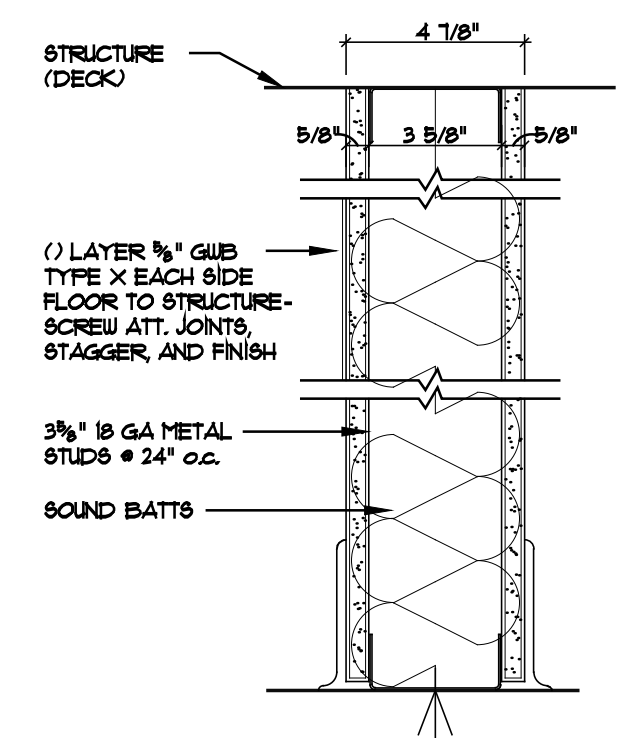
1 FLOOR PLAN
A-1.1 SCALE: 3/16" = 1' - 0"
4,727 SQ. FT. NORTH

GENERAL NOTES:

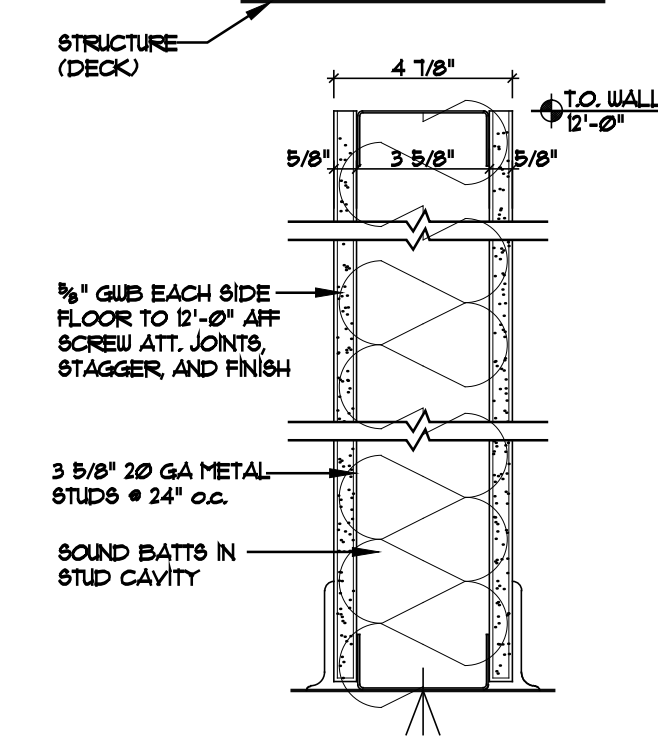
- CONSTRUCTION TYPE 5B, UNSPRINKLERED
- ELECTRICAL, HVAC, PLUMBING AND CONTRACTORS TO PROVIDE COMPLETE SYSTEMS WITH ALL NECESSARY PLAN REVIEW AND PERMITS.
- EXIT SIGNS SHALL BE ILLUMINATED AT ALL TIMES. ENSURE CONTINUED ILLUMINATION FOR A DURATION OF NOT LESS THAN 90 MINUTES IN CASE OF PRIMARY POWER LOSS. EXIT SIGNS SHALL BE CONNECTED TO AN EMERGENCY ELECTRICAL SYSTEM PROVIDED FROM STORAGE BATTERIES.
- PROVIDE AN EMERGENCY ILLUMINATION POWER ALONG EGRESS PATHS IN ACCORDANCE W/ ICC ELECTRICAL CODE. ILLUMINATION IS TO LAST FOR A DURATION OF NOT LESS THAN 90 MINUTES AND SHALL CONSIST OF STORAGE BATTERIES (INTERIOR & EXTERIOR)
- ELECTRIC CONTRACTOR TO PROVIDE SUFFICIENT TEMPORARY POWER AND LIGHTING DURING CONSTRUCTION
- TENANT SPACE IS TO HAVE AN ACCESSIBLE WATER BOTTLE DRINKING FOUNTAIN WITH INDIVIDUAL DRINKING CUPS FURNISHED BY TENANT (NO PLUMBING) ELECTRICIAN TO PROVIDE OUTLET FOR COOLER
- ALL PERIMETER WINDOW SILLS ARE TO BE PLASTIC LAMINATE WITH DRYWALL RETURNS. (COLOR BY ARCHITECT)
- ALL WALLS TO RECEIVE PRIMER WITH EGGSHELL TEXTURE BY DRYWALL CONTRACTOR AND (2) COATS OF LATEX PAINT BY PAINTING CONTRACTOR
- ALL GLAZING WITHIN A 2'-0" ARC OF EITHER VERTICAL EDGE OF THE DOOR IN A CLOSED POSITION AND WHERE THE BOTTOM EXPOSED EDGE OF THE GLAZING IS LESS THAN 2'-0" ABOVE THE WALKING SURFACE ARE TO BE TEMPERED SAFETY GLASS (TYPICAL)
- FURNISH AND INSTALL DOORS AND WINDOW ASSEMBLIES AS INDICATED ON THE PLANS ALONG WITH ALL HARDWARE INDICATED AND THAT MAY BE REQUIRED FOR A COMPLETE JOB. ALL DOORS AND WINDOWS SHALL OPERATE SMOOTHLY WITHOUT BIND AND BE INSTALLED PLUMB AND TRUE. ALL HARDWARE SHALL FIT PROPERLY AND BE ADJUSTED AS REQUIRED. ALL FRAMES SHALL MEET OR EXCEED AAMA 6013 AND A511 183. SEE SCHEDULES FOR MORE INFORMATION.
- ALL LOCKSETS SHALL BE LEVER TYPE AS REQUIRED TO MEET REQUIREMENTS OF THE ADA. ALL OTHER HARDWARE SHALL CONFORM TO THE REQUIREMENTS OF ADA. ALL EXIT DOORS SHALL BE EQUIPPED WITH LEVER TYPE EXIT HARDWARE OPERABLE FROM THE INSIDE WITHOUT THE USE OF A LATCH, KEY OR BOLT. SCHLAGE 'A' SERIES OR APPROVED EQUAL.
- DRYWALL CONTRACTOR TO INSTALL DRYWALL PER THE LATEST EDITIONS OF "RECOMMENDED SPECIFICATIONS FOR THE APPLICATION AND FINISHING OF GYPSUM BOARD" G4-16 AS PUBLISHED BY THE GYPSUM ASSOCIATION AND THE "GYPSUM CONSTRUCTION HANDBOOK" AS PUBLISHED BY UNITED STATES GYPSUM COMPANY. NOTE: PROVIDE CONTROL JOINTS PER THESE REQUIREMENTS. PROVIDE VINTL EDGE TRIM @ EXTERIOR DRYWALL CEILING IF REQUIRED.
- TOILET ROOMS TO MEET ADA REGULATIONS AND TO HAVE STANDARD ACCESSORIES AND DISPENSERS.
- ALL EXHAUST FAN VENTING THROUGH ROOF BY HVAC CONTRACTOR. COORDINATE INSTALLATION WITH JOB SUPERINTENDENT.
- ALL ROOF TOP PENETRATIONS ARE TO BE PREFINISHED METAL OR PAINTED TO MATCH THE ROOF. VERIFY COLOR WITH ARCHITECT PRIOR TO INSTALLATION. COORDINATE INSTALLATION WITH JOB SUPERINTENDENT.
- ALL SIGNAGE SHALL MEET THE REQUIREMENTS OF THE ADA.
- WHERE PERMANENT IDENTIFICATION IS PROVIDED FOR ROOMS AND SPACES, SIGNS SHALL BE INSTALLED ON THE WALL ADJACENT TO LATCH SIDE OF THE DOOR WHERE THERE IS NO WALL SPACE TO THE LATCH SIDE OF THE DOOR, INCLUDING AT THE DOUBLE LEAF DOORS, SIGNS SHALL BE PLACED ON THE NEAREST ADJACENT WALL. SUBMIT TEXT FOR APPROVAL PRIOR TO FABRICATION.
- MOUNTING HEIGHT SHALL BE 60" ABOVE FINISH FLOOR TO THE CENTERLINE OF THE SIGN UNLESS INDICATED OTHERWISE.
- GENERAL CONTRACTOR TO FURNISH AND INSTALL EXTINGUISHERS PER I.B.C. SECTION 906 AND NFPA 1016-1018 MOUNT FIRE EXTINGUISHER NOT HIGHER THAN 48" ABOVE FINISH FLOOR UNLESS LOCAL REGULATIONS REQUIRED DIFFERENT HEIGHT. ALL FIRE EXTINGUISHERS AND CABINETS TO MEET THE REQUIREMENTS OF THE ADA.
- MASON TO USE COLORED MORTAR TO MATCH ADJACENT BLOCK COLOR. VERIFY COLOR WITH ARCHITECT PRIOR TO INSTALLATION.
- MASON IS TO USE DUR-O-WAL, TRIANGLE TIE MODEL # D/A 101 AND DUR-O-WAL MODEL # D/A 210 ANCHOR SCREW TO STUDS WITH (2) SCREWS, TRIANGLES AND ANCHORS ARE TO BE HOT DIPPED FINISH MASON IS TO UTILIZE (1) THE ASSEMBLY FOR EVERY 228 SQ FT OR WALL AREA (MAXIMUM).



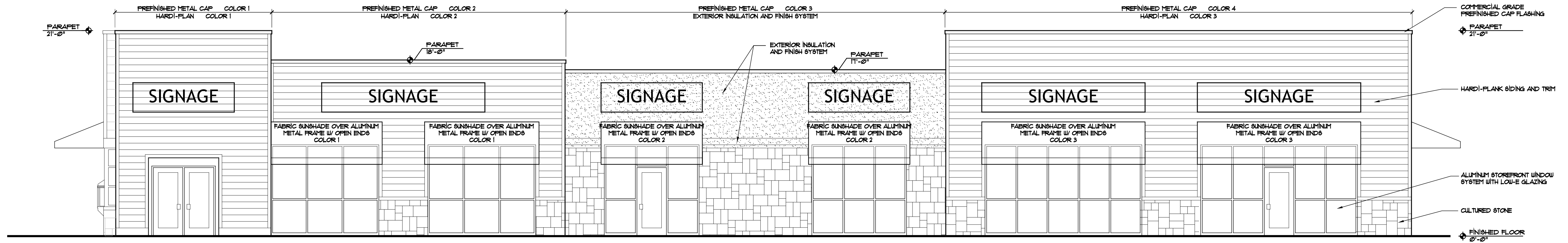
TYPICAL RESTROOM ELEVATIONS
SCALE: 1/4" = 1'-0"



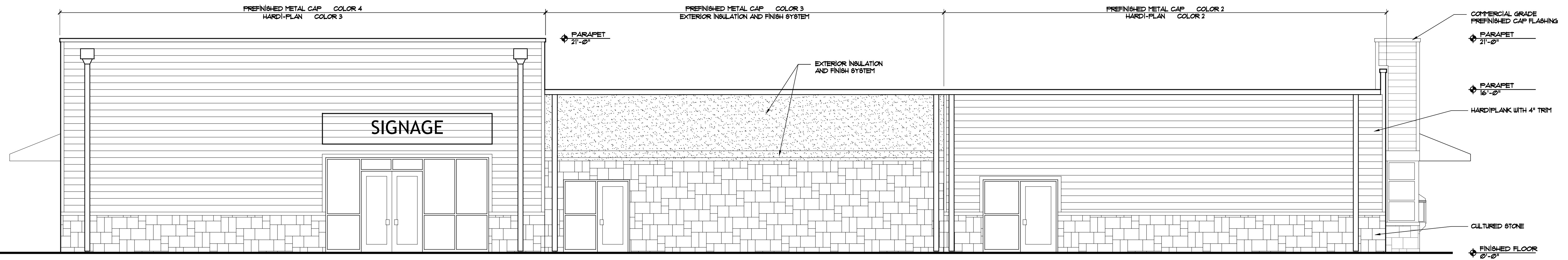
P1 TYPICAL DEMISING WALL



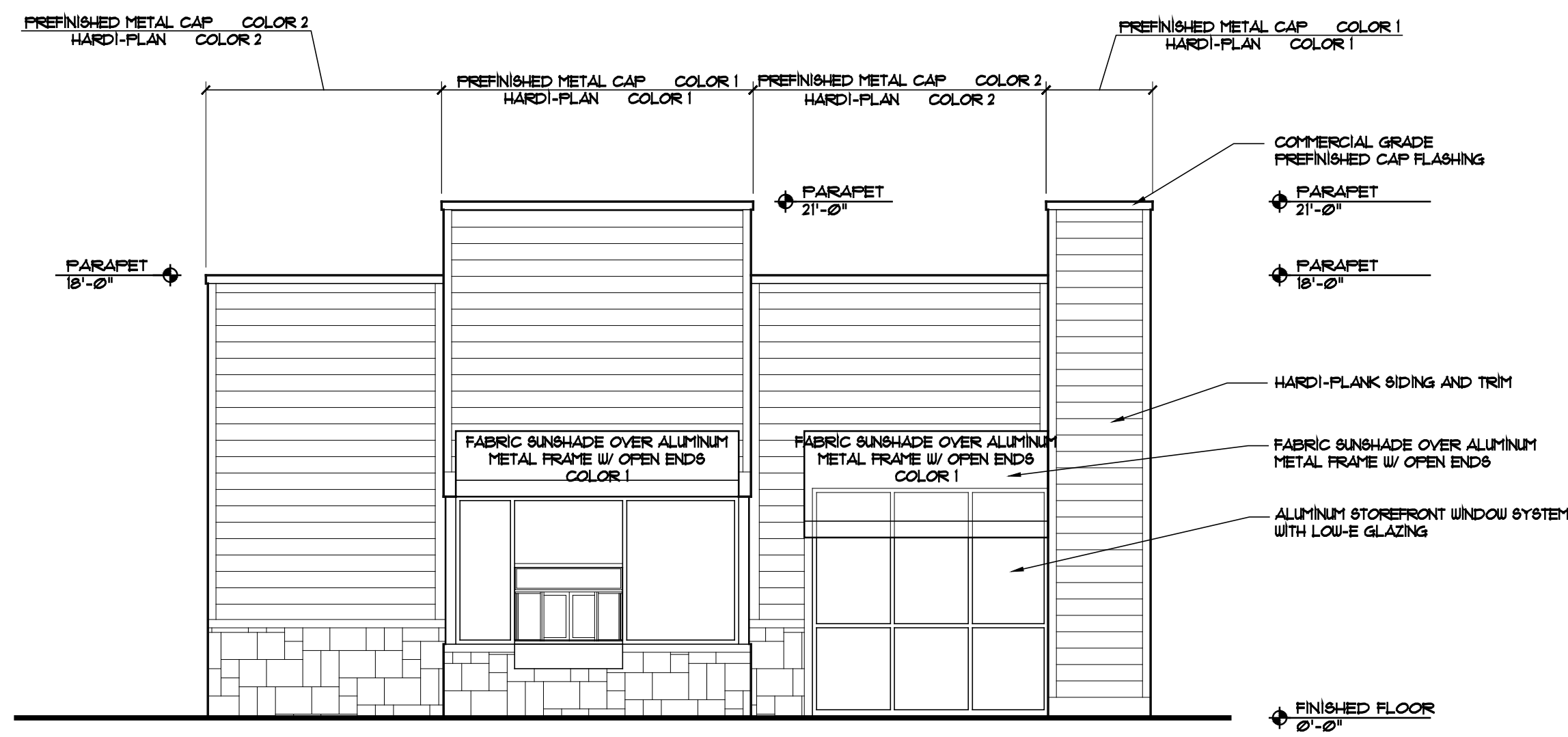
P2 TYPICAL INTERIOR WALL



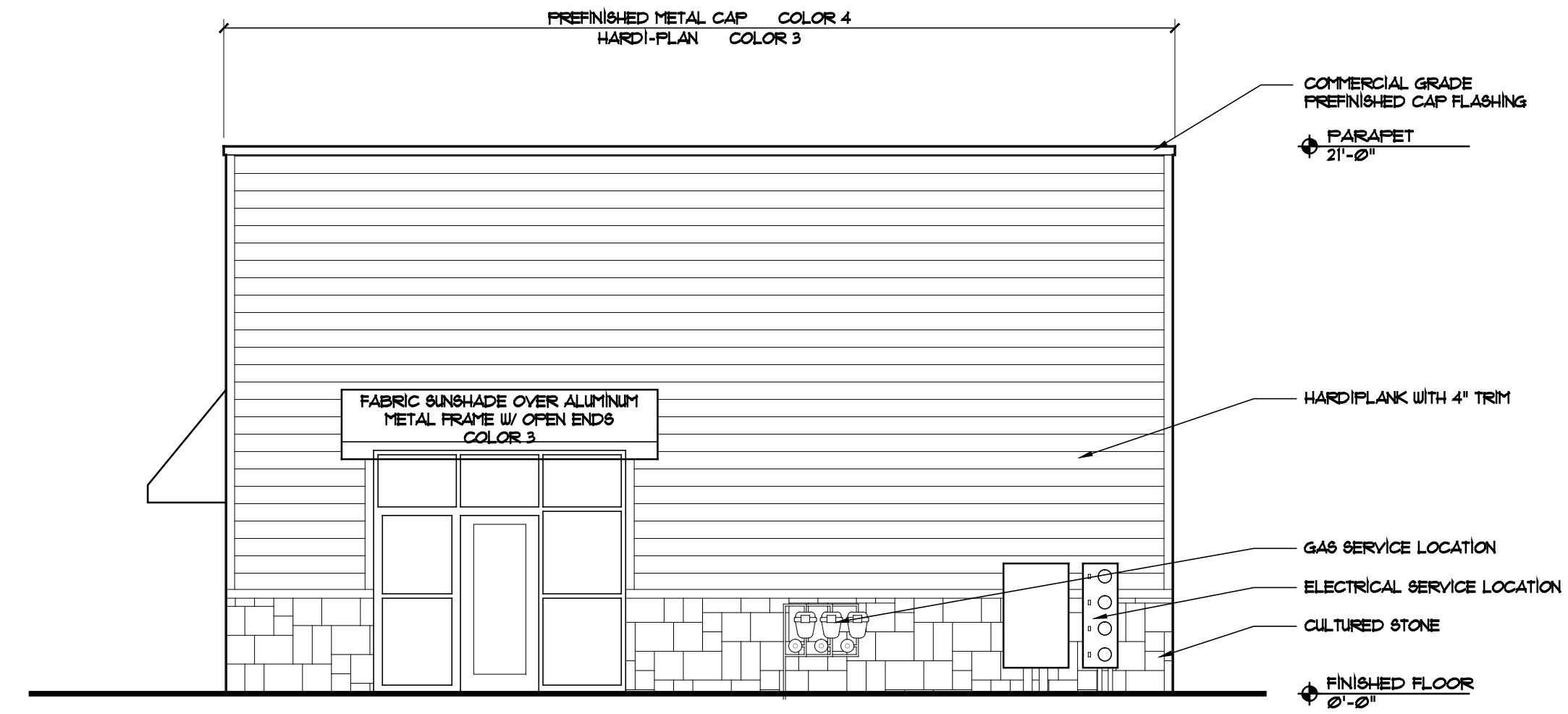
1 SOUTH ELEVATIONS
A-2.1 SCALE: 3/16" = 1' - 0"



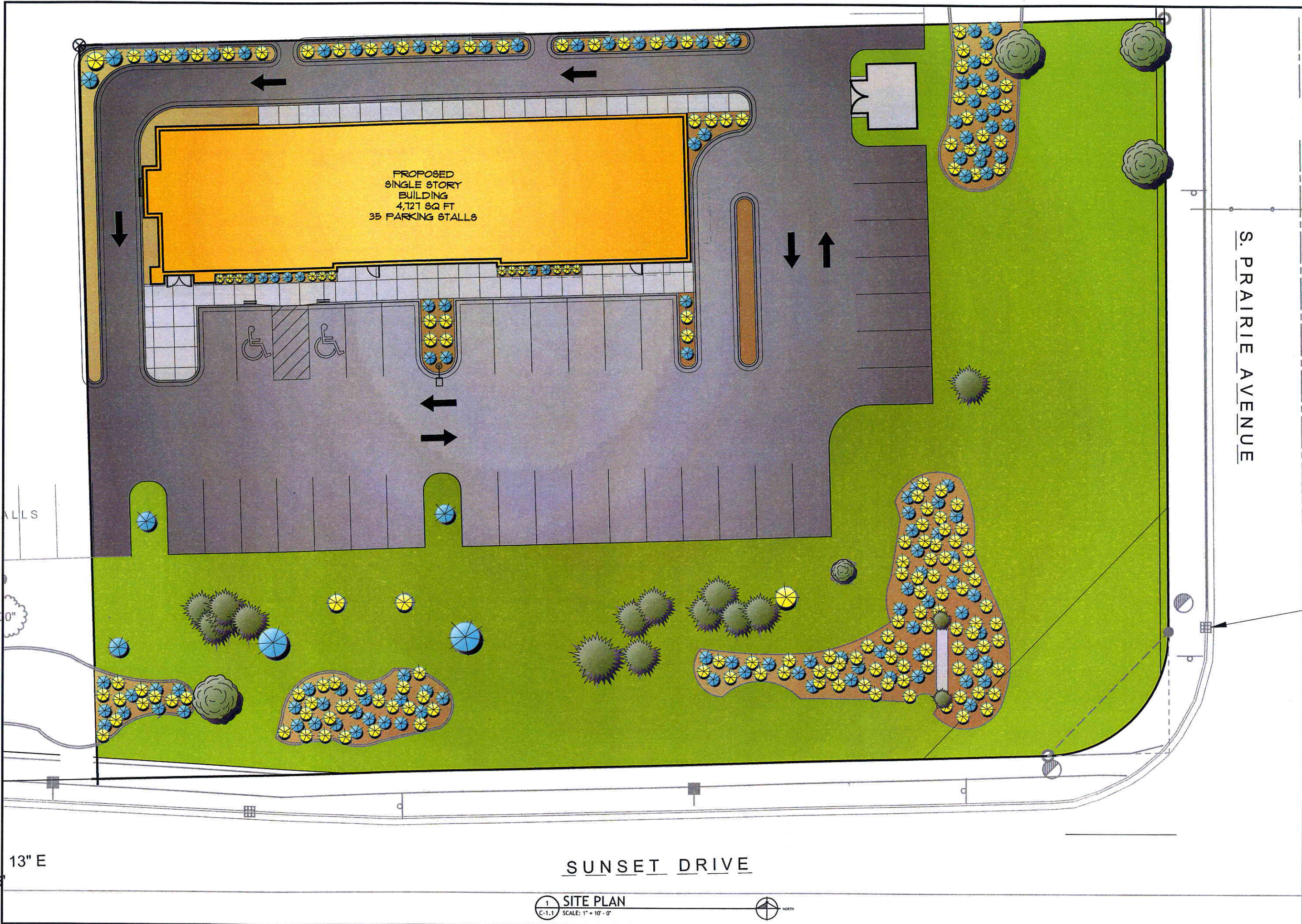
2 NORTH ELEVATIONS
A-2.1 SCALE: 3/16" = 1' - 0"



3 WEST ELEVATIONS
A-2.1 SCALE: 3/16" = 1' - 0"



4 EAST ELEVATIONS
A-2.1 SCALE: 3/16" = 1' - 0"



612 WEST MAIN STREET
MADISON, WI 53703
608-257-1090
FAX 608-257-1092

REV	DATE

COPYRIGHTED DRAWING
© 2015, TJK Design Build, Inc. ALL RIGHTS RESERVED. NEITHER THIS DOCUMENT NOR THE INFORMATION HEREIN MAY BE REPRODUCED, DISTRIBUTED, USED OR SOLOLED, IN WHOLE OR IN PART, UNLESS EXPRESSLY AUTHORIZED IN WRITING BY TJK Design Build, Inc.

PROPOSED FACILITY FOR:
KLINKE COMMERCIAL DEVELOPMENT
SUNSET DRIVE
WAUKESHA, WISCONSIN

C-1.1
8.10.15