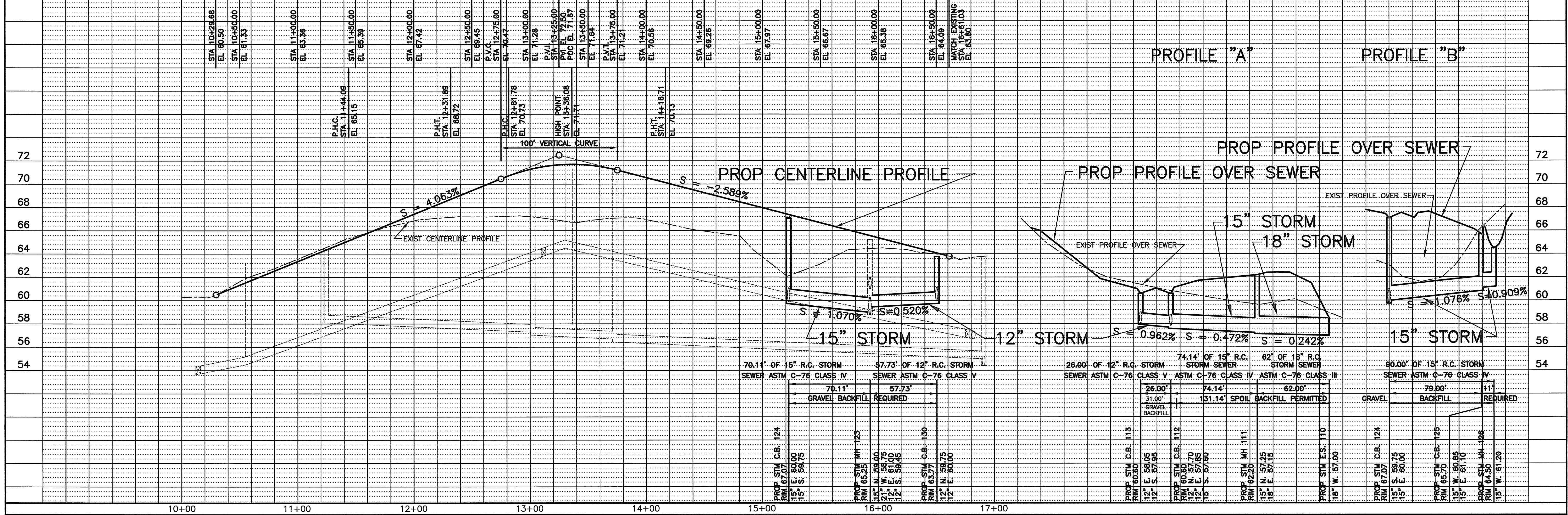


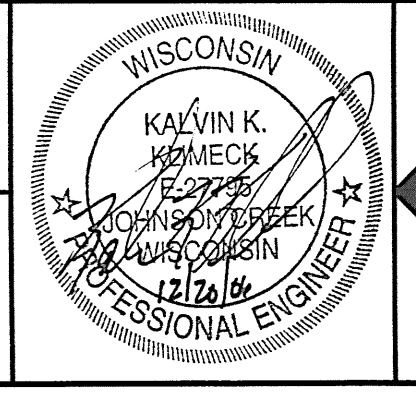
THE LOCATION OF UNDERGROUND STRUCTURES OR FACILITIES SHOWN ON THE PLANS ARE BASED ON AVAILABLE RECORDS AT THE TIME OF PLAN PREPARATION & ARE NOT GUARANTEED TO BE COMPLETE OR CORRECT. THE CONTRACTOR IS RESPONSIBLE FOR CONTACTING ALL UTILITIES 72 HOURS PRIOR TO CONSTRUCTION TO DETERMINE THE EXACT LOCATION OF ALL FACILITIES AND TO PROVIDE ADEQUATE PROTECTION DURING THE COURSE OF THE WORK.

ESTIMATE OF QUANTITIES	
1-1/2" ASPHALT SURFACE COURSE	1,683 SQ YDS
2-1/2" ASPHALT BINDER COURSE	1,683 SQ YDS
8" COMPACTED AGGREGATE BASE COURSE	2,104 SQ YDS
30" MOUNTABLE CURB & GUTTER	1263 LIN FT
4" CONCRETE SIDEWALK	280 SQ YDS
18" STORM SEWER (SPOIL BKFL)	62 LIN FT
15" STORM SEWER (GRAVEL BKFL)	165 LIN FT
15" STORM SEWER (SPOIL BKFL)	69 LIN FT
12" STORM SEWER (GRAVEL BKFL)	233 LIN FT
48" STORM SEWER MANHOLE	3 EACH
STANDARD STORM SEWER CATCH BASIN	11 EACH
18" R.C. END SECTION (W/GRATE)	1 EACH



NO.	REVISIONS	BY	DATE
1	ADDED OWNERS REVISIONS	KKK	8-04-06
2	ADDED GENERAL REVISIONS	KKK	11-07-06
3	ADDED GENERAL REVISIONS	KKK	12-20-06

DESIGNED BY: K. K. KLIMECK
 DRAWN BY: K. K. KLIMECK
 CHECKED BY: K. K. KLIMECK
 SCALE: 1" = 40' HORIZ.
 1" = 4' VERT.
 DATE: FEBRUARY 24, 2006



PIONEER ENGINEERING AND SURVEYING, L.L.C.
 CONSULTANTS IN SUBDIVISIONS AND COMMERCIAL DEVELOPMENTS
 3902 C.T.H. "B"
 JOHNSON CREEK, WI. 53038
 (920) 699 - 3330 FAX: 699 - 3332

THE RIDGE AT WOODLAND CREEK CONDOMINIUMS STORM SEWER & PAVING PLAN
 IN: WOODLAND HILLS CIRCLE
 FROM: STA 11+25±
 TO: STA 16+90±

MUNIC. PROJ. NO.	PIONEER PROJ. NO.
CITY OF WAUKESHA	05-05
APPROVED BY: _____	PIONEER SHT. NO.
CITY ENGINEER DATE	PAGE 2 OF 4
	PIONEER FILE NO.
	05-05

D:\0505\STM2