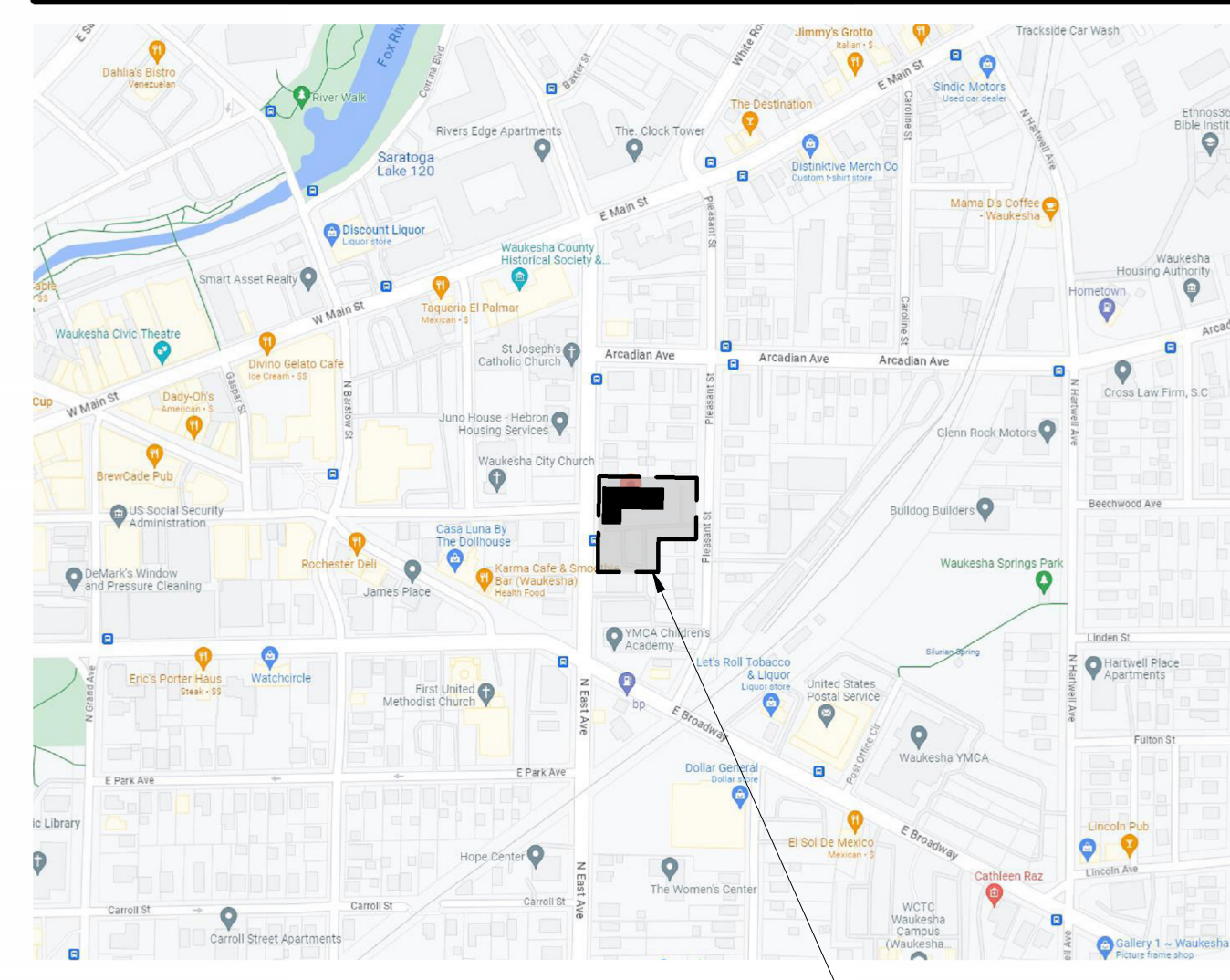


SITE LOCATION MAP



PROJECT ADDRESS: 801 N EAST AVE, WAUKESHA, WI 53186

SITE LOCATION

PROJECT SCOPE

- REPLACEMENT OF ALL EXTERIOR WINDOWS AT RESIDENT UNITS - WINDOW SIZE, OPERATION STYLE, AND LOCATIONS ARE CONSISTENT WITH EXISTING (EXISTING ALUMINUM STOREFRONT AT FIRST FLOOR TO REMAIN)
- NEW CLADDING AT EXTERIOR (REPLACEMENT OF GREEN I.M.P. PORTIONS OF THE SKIN)
- NEW AIR CONDITIONER SLEEVES IN ALL RESIDENT UNITS
- NEW FASCIA, SOFFIT, AND RECESSED CAN LIGHTING AT EXISTING ENTRY CANOPY
- POWERWASHING OF ALL EXTERIOR PRECAST CONCRETE

EXTERIOR MATERIAL LEGEND

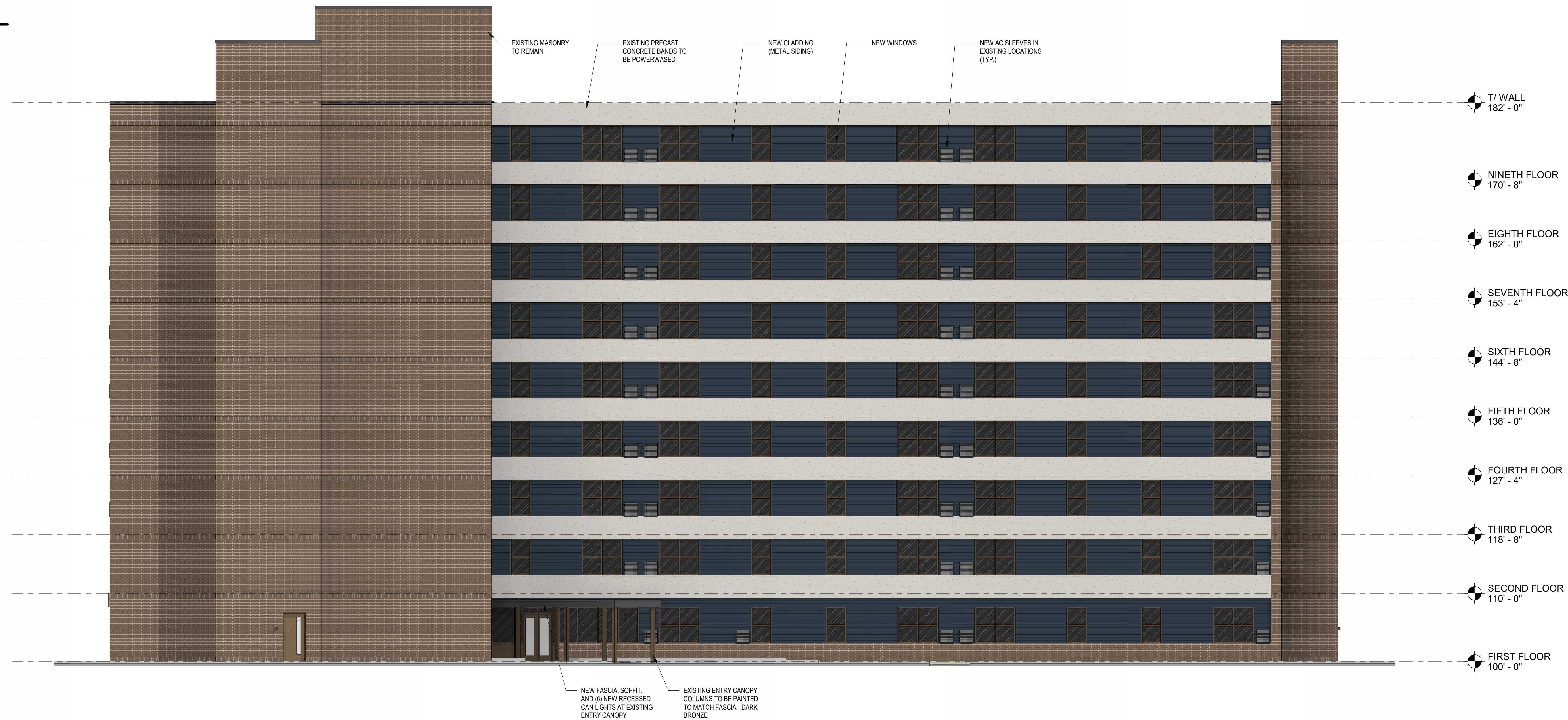
METAL SIDING:
 MANUFACTURER: QUALITY EDGE
 PRODUCT: VESTA PLANK - 5' SHIPLAP PROFILE (24 GA. GALVALUME, KYNAR 800 PVDF FINISH)
 FINISH: 470 - MIDNIGHT BLUE

WINDOWS:
 MANUFACTURER: ALLIANCE
 PRODUCT: WINDGATE, DOUBLE HUNG - VINYL
 FINISH: BRONZE

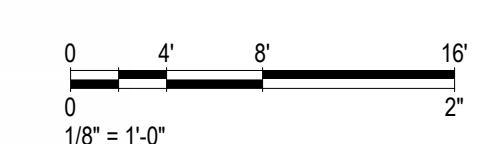
ADDITIONAL MATERIALS:
 PAC-CLAD 24 GA. PREFINISHED SHEET METAL - DARK BRONZE; AC SLEEVES, ENTRY CANOPY FASCIA
 ROLLEX VENTILATED SOFFIT - MUSKET; ENTRY CANOPY SOFFIT



2 EXTERIOR ELEVATION - EAST
 1/8" = 1'-0"



1 EXTERIOR ELEVATION - SOUTH
 1/8" = 1'-0"



ISSUE DATES:

Issue	Description	Date
PC	PLAN COMMISSION	11-15-23

This document contains confidential or proprietary information of Iconica. Neither the document nor the information herein is to be reproduced, distributed, used or disclosed, either in whole or in part, except as specifically authorized by Iconica.

Sheet Title
EXTERIOR ELEVATIONS

Project Number: 20220400
 Sheet Number

A301

ISSUE DATES:

Issue	Description	Date
PC	PLAN COMMISSION	11-15-23

This document contains confidential or proprietary information of Iconica. Neither the document nor the information herein is to be reproduced, distributed, used or disclosed, either in whole or in part, except as specifically authorized by Iconica.

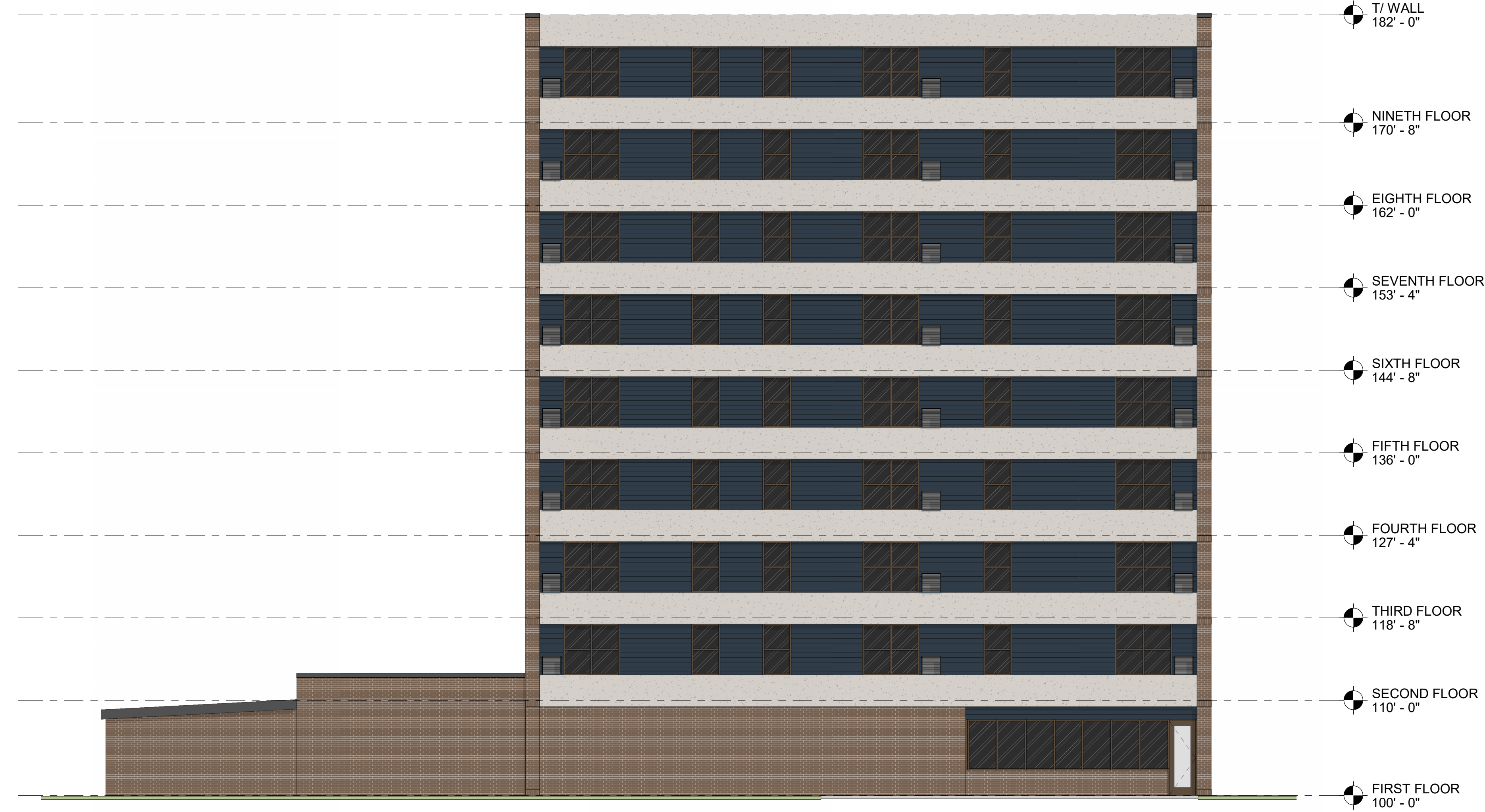
Sheet Title
EXTERIOR ELEVATIONS

Project Number: 20220400
 Sheet Number

A302

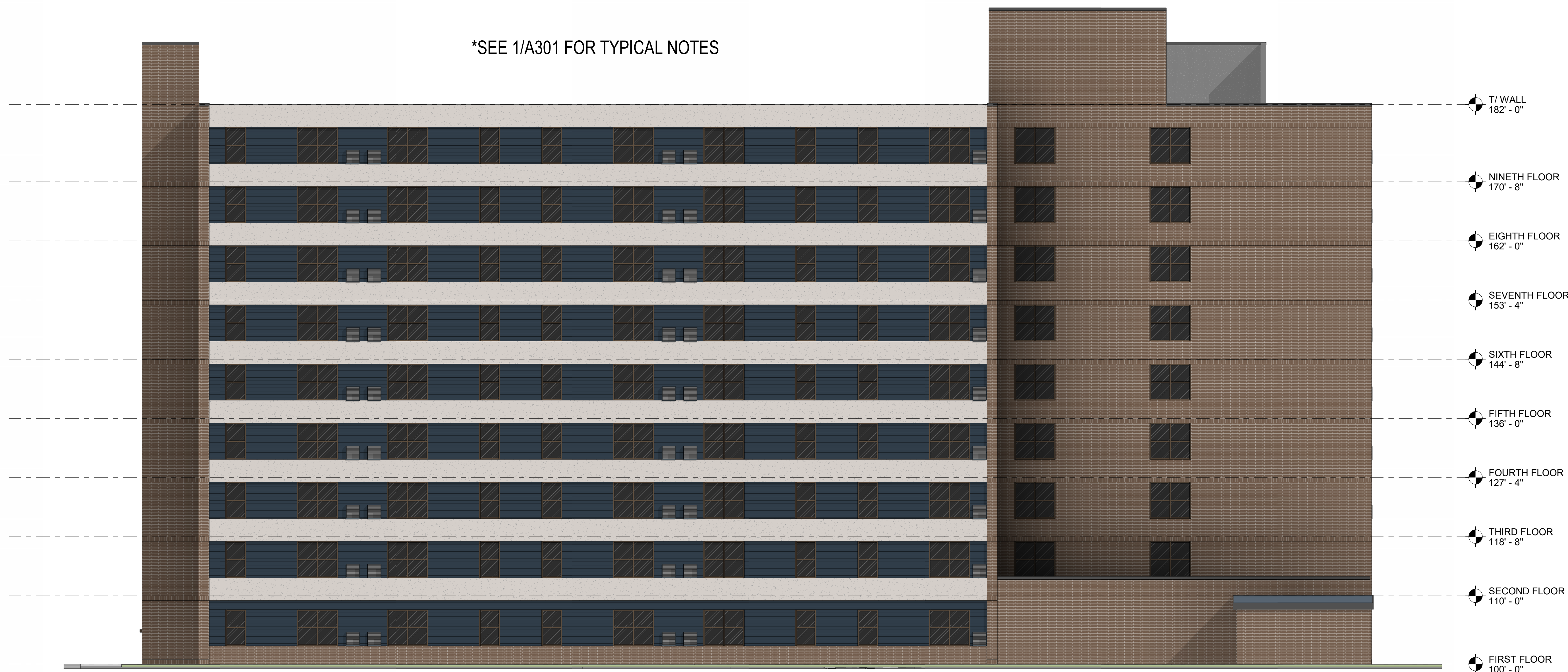
EXTERIOR MATERIAL LEGEND

	<p>METAL SIDING MANUFACTURER: QUALITY EDGE PRODUCT: VESTA PLANK - 5" SHIPLAP PROFILE (24 GA. GALVALUME, KYNAR 500 PVDF FINISH) FINISH: 470 - MIDNIGHT BLUE</p>
	<p>WINDOWS MANUFACTURER: ALLIANCE PRODUCT: WINDGATE, DOUBLE HUNG - VINYL FINISH: BRONZE</p>
<p>ADDITIONAL MATERIALS PAC-CLAD 24 GA. PREFINISHED SHEET METAL - DARK BRONZE: AC SLEEVES, ENTRY CANOPY FASCIA ROLLEX VENTILATED SOFFIT - MUSKET: ENTRY CANOPY SOFFIT</p>	



2 EXTERIOR ELEVATION - WEST
 1/8" = 1'-0"

*SEE 1/A301 FOR TYPICAL NOTES



1 EXTERIOR ELEVATION - NORTH
 1/8" = 1'-0"

