

Wall Panel package includes 2x6x16' walls, double studs 4' oc, ladder framing between @ 2' oc, aspen plywood and plastic shop applied to inner face of walls, treated bottom plates, hold downs @ garage door openings, in wall headers included, 9' x 125' green guard wrap for exterior of building

Roof Truss package includes 4/12 pitch trusses, 4' oc, 30-5-5 # 30 # GSL, L/240, 2x4 msr web, 6 1/16" heel, 5 1/2" seat cut, connectors,

- Panel covers 36" width
- Can be used for residential, commercial and industrial roofing or post frame applications.
- Actual .0157" minimum thickness before painting .018" nominal thickness after painting (28 gauge)
- G100 galvanization coating plus zinc phosphate - 66% more than 40-year paint warranty panels
- Manufactured from structural strength ASTM-A653, grade 80 steel
- Superior hail resistance (Class 4), Class A Fire Rated
- Through fastener panel system
- Limited Lifetime paint warranty

GARAGE
57'-0" X 44'-0"

3-12X14 CHI 3216 STEEL THERMAL INSUL DOORS
R-VALUE = 17.54
STD LIFT TRACK
PERIMETER W/S

4ft x 58ft x 6" thick concrete approach

3- T501L5 COMM OPENERS
OPEN/CLOSE/STOP STATION
SAFETY BEAMS
24VOLT CONTROL WIREING

STRESS POINTS-
Each Corner and at Tops of Door Headers
Each Point Calculates to 6.5 lbs. / sq. ft.
Maximum Stress Point is 18.5 lbs. / sq. ft.

NO.	DESCRIPTION	BY	DATE

SHEET TITLE:
Floor Plan

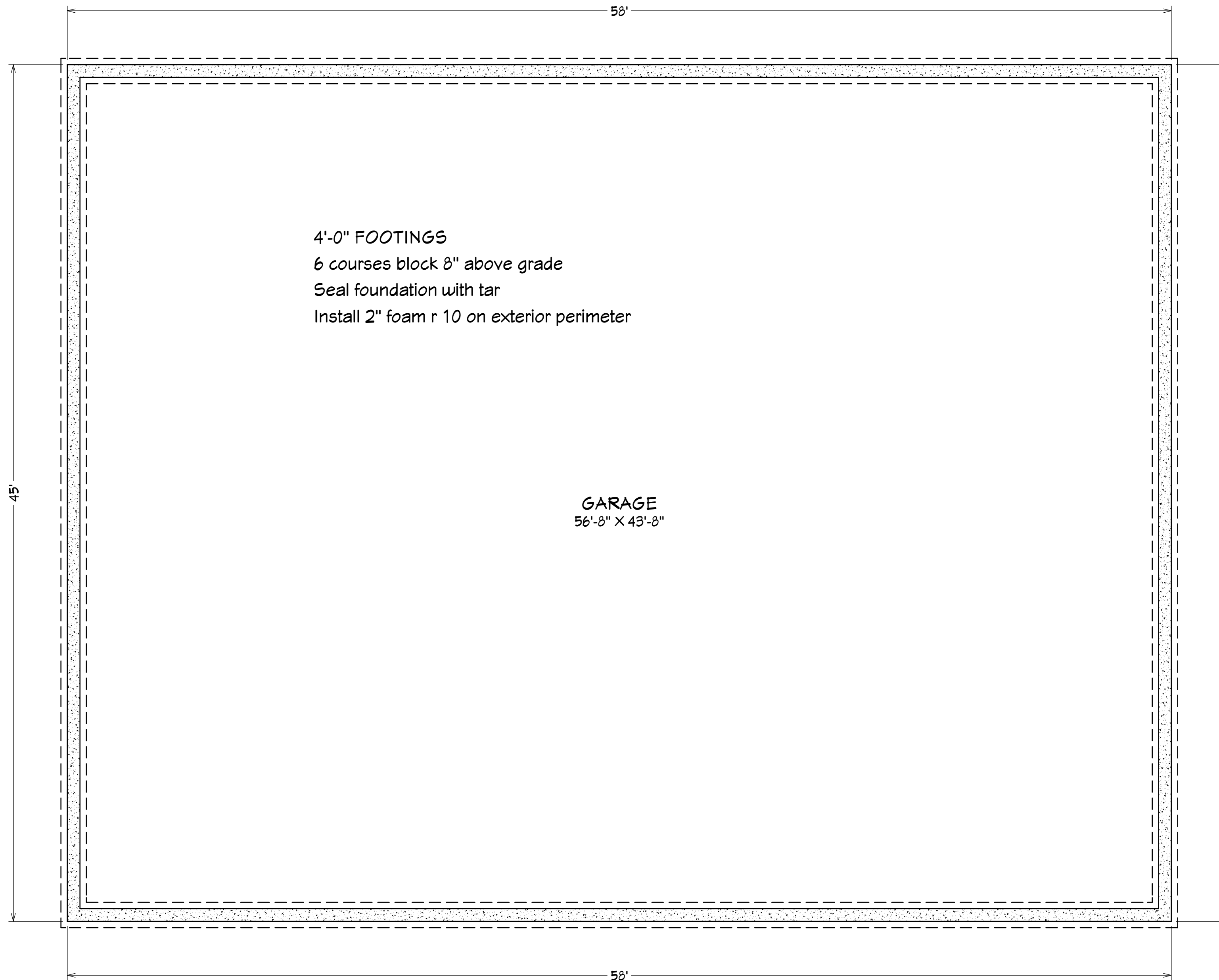
PROJECT DESCRIPTION:
Roemer/ Denk

DRAWINGS PROVIDED BY:
Caliber Builders

DATE:
9/23/19

SCALE:
1/4" - 1'-0

SHEET:
A-4



4'-0" FOOTINGS
 6 courses block 8" above grade
 Seal foundation with tar
 Install 2" foam r 10 on exterior perimeter

GARAGE
 56'-8" X 43'-8"

Foundation

--

NO.	DESCRIPTION	BY	DATE

SHEET TITLE:
Foundation

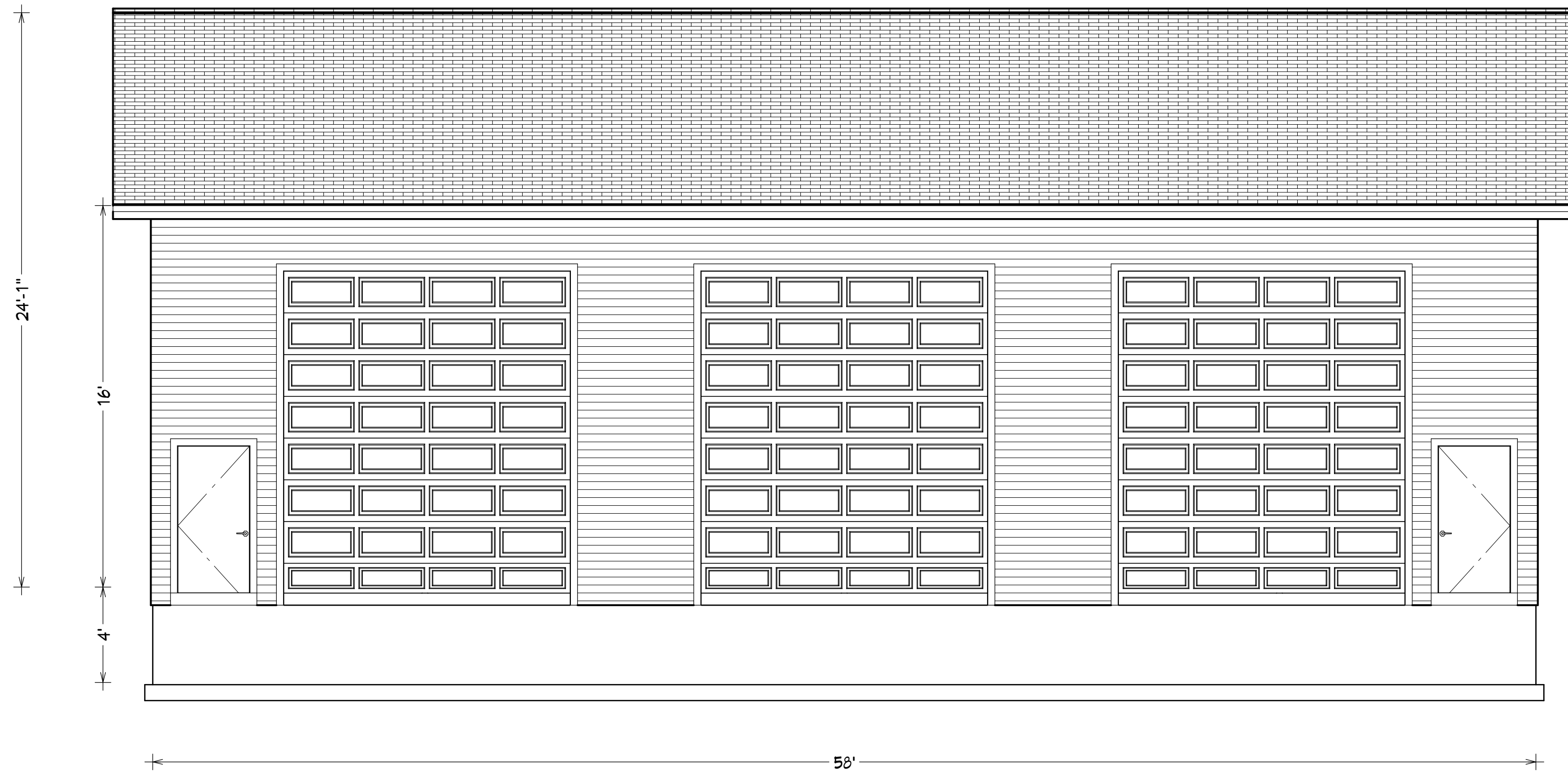
PROJECT DESCRIPTION:
Abbott Company

DRAWINGS PROVIDED BY:
Caliber Builders

DATE:
 9/23/19

SCALE:
 1/4" = 1'-0"

SHEET:
A-5



- Double stud 2x6 every 4'-0 o.c. 2x-6 horizontal blocking every 2'-0" between
- 4'-0 foundation block 2" x 4'-0 foam extruded around perimeter
- Trusses on 4'-0 center above
- steel siding and roofing
- insulated over head garage doors 12'-0 x 14'-0 height with openers
- steel entry doors
- r19 insulation in walls
- r 38 insulation in ceiling
- 4'-0 x 58'-0 approach

Elevation 1

North Elevation

NO.	DESCRIPTION	BY	DATE

SHEET TITLE:
Front Elevation

PROJECT DESCRIPTION:
Abbott company
1413 Pearl st
waukesha WI 53186

DRAWINGS PROVIDED BY:
Caliber Builders
caliberbuilders@gmail.com
262-893-2167

DATE:
9/23/19

SCALE:
1/4" = 1'-0

SHEET:

A-1



Elevation 3

SOUTH ELEVATION

--

NO.	DESCRIPTION	BY	DATE

SHEET TITLE:
Rear Elevation

PROJECT DESCRIPTION:
Abbott company

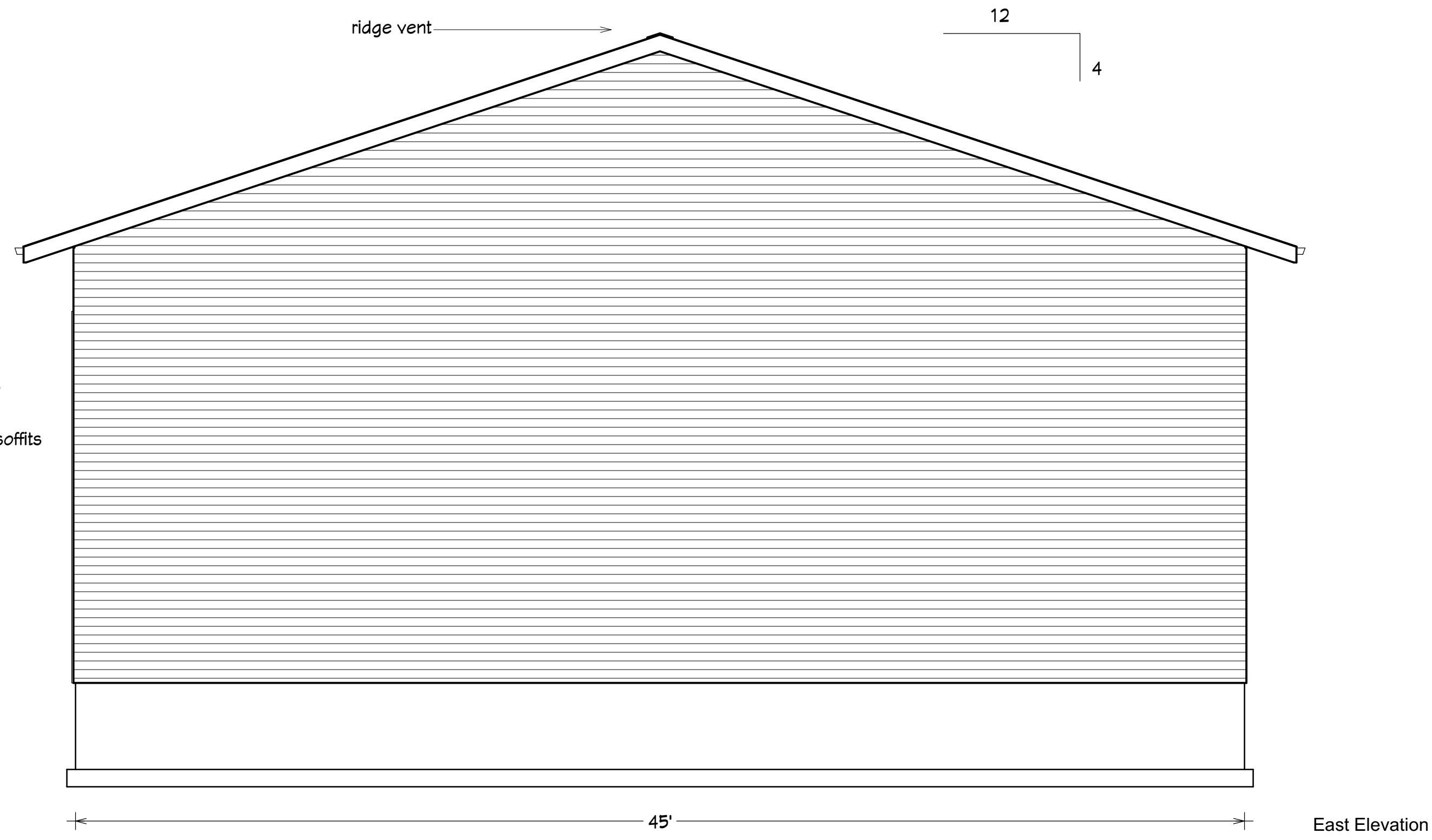
DRAWINGS PROVIDED BY:
Caliber Builders

DATE:
9/23/19

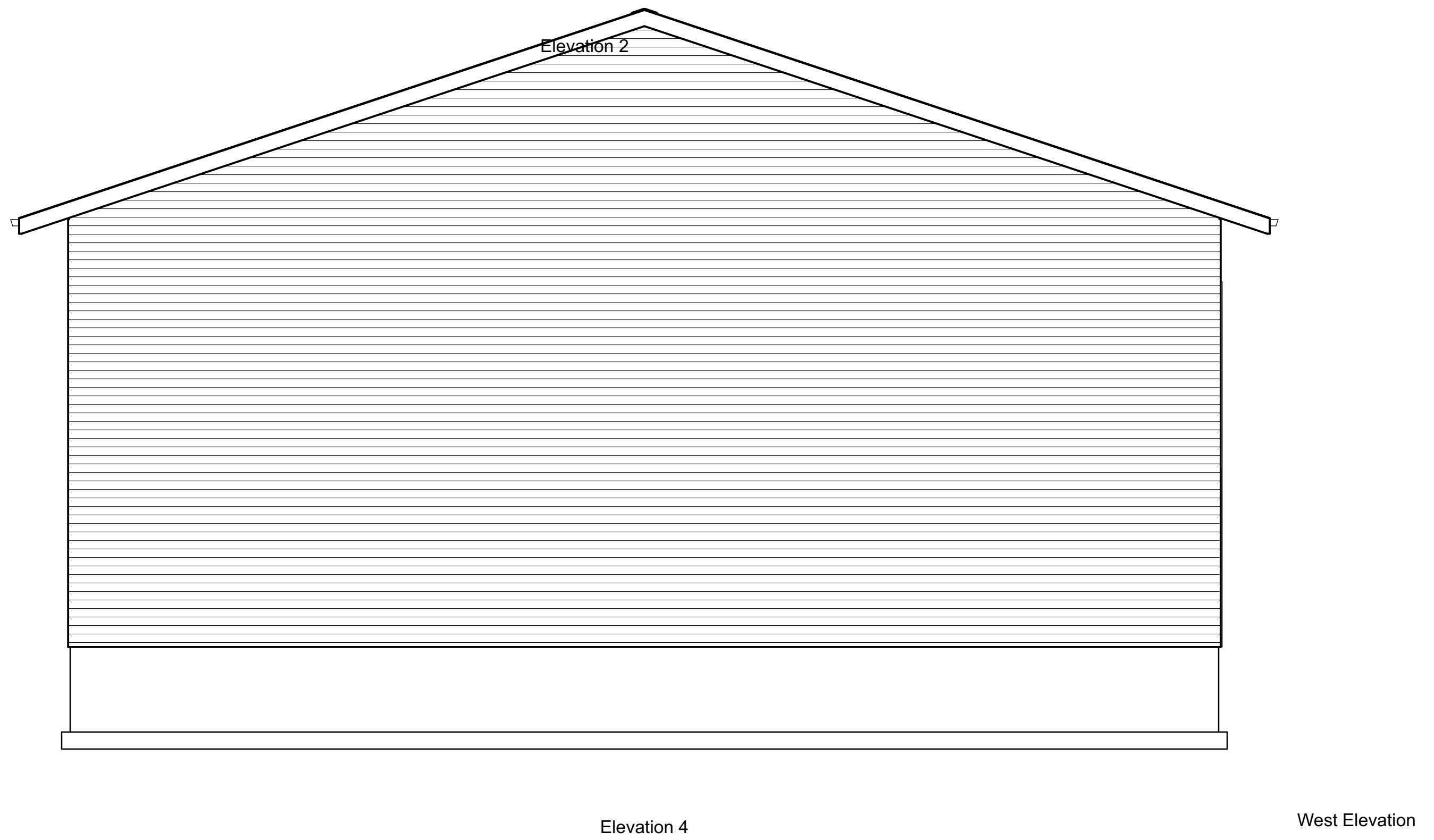
SCALE:
1/4" = 1'-0

SHEET:

A-3



2'-0" overhangs at
horizontal overhangs
1'-0" at gables
aluminum fascia and soffits
vented
6in fascia



NO.	DESCRIPTION	BY	DATE

SHEET TITLE:
Right and Left Elevation

PROJECT DESCRIPTION:
ABBOTT company

DRAWINGS PROVIDED BY:
Caliber Builders

DATE:
9/23/19

SCALE:
1/4" = 1'-0"

SHEET:

A-2