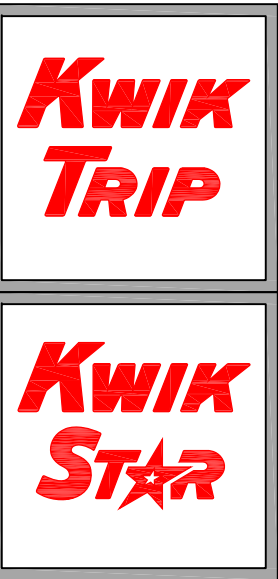


- PROPOSED SIGNS:**
 #01 24" LED KWIK TRIP BUILDING LETTERS
 #02 CARWASH BUILDING DIRECTIONAL SIGN
 #03 18" LED KWIK TRIP & 24" CARWASH BUILDING LETTERS
 #04 24" LED KWIK TRIP BUILDING LETTERS
 #05 CARWASH ENTER
 #06 CARWASH EXIT
 #07 CARWASH INFORMATIONAL SIGN
 #08 18" LED KWIK TRIP CANOPY LETTERS
 #09 18" LED KWIK TRIP CANOPY LETTERS
 #10 18" LED KWIK TRIP CANOPY LETTERS
 #11 FREESTANDING PYLON SIGN
 #12 24" LED KWIK TRIP BUILDING LETTERS



KWIK TRIP, Inc.
 P.O. BOX 2107
 1626 OAK STREET
 LA CROSSE, WI 54602-2107
 PH. (608) 781-8988
 FAX (608) 781-8960

SITE PLAN
CONVENIENCE STORE #1219
WITH 1 BAY CARWASH
 HWY 59 & X
 WAUKESHA, WI

#	DATE	DESCRIPTION
△	2021/10/19	GABLE ADDED
DRAWN BY		KMK
SCALE		MULTIPLE
PROJ. NO.		0001
DATE		2021-08-16
SHEET		SP1

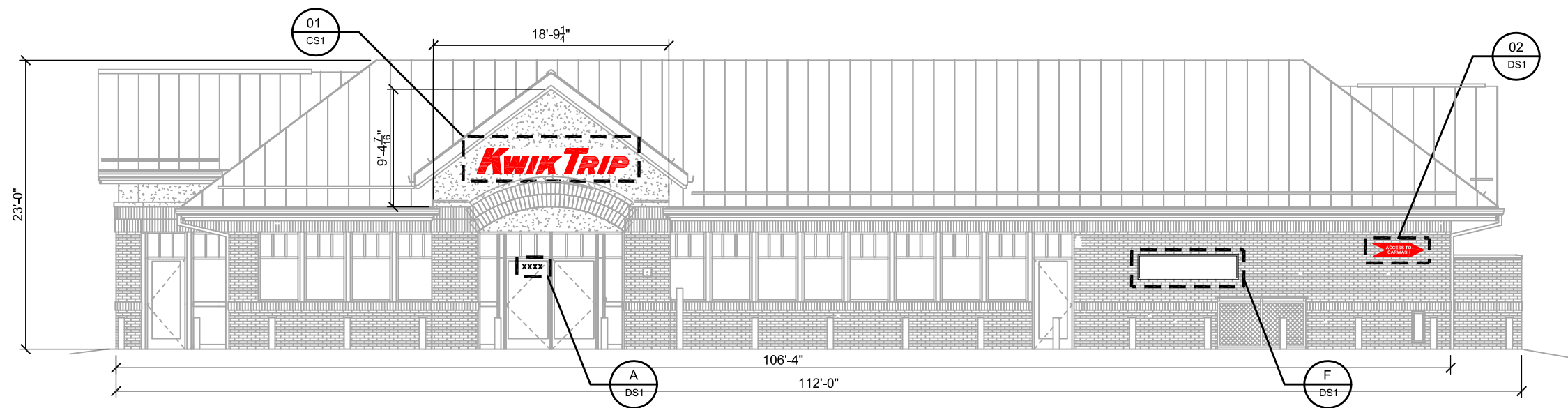
SITE PLAN

1" = 50'-0"



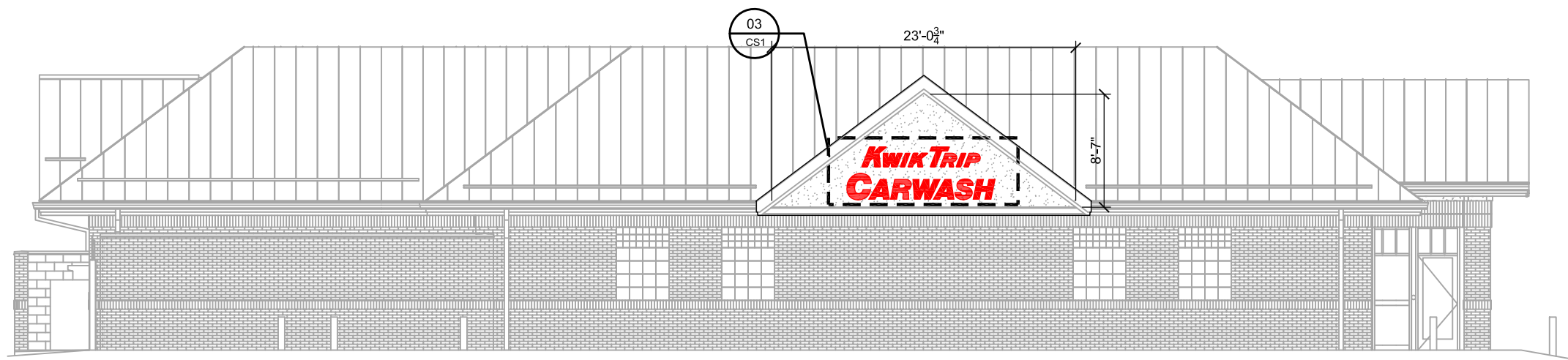
20

18



STORE ELEVATION

SCALE: 3/32" = 1'-0"



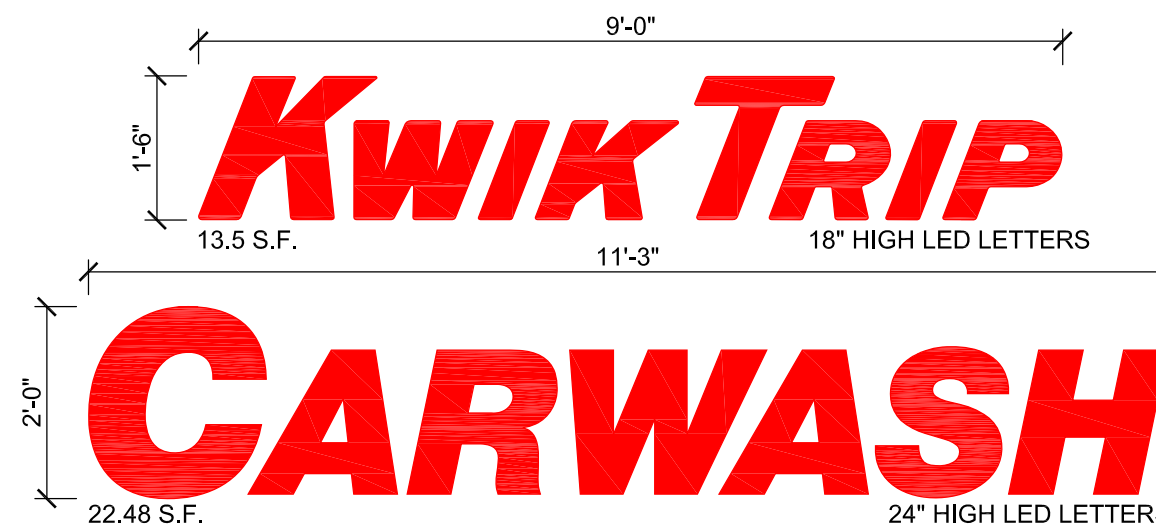
STORE ELEVATION

SCALE: 3/32" = 1'-0"



LOGO DETAIL - SIGN #01

SCALE: 1/2" = 1'-0"



LOGO DETAIL - SIGN #03

SCALE: 1/2" = 1'-0"

**KWIK
TRIP**

**KWIK
STAR**

KWIK TRIP, Inc.
P.O. BOX 2107
1626 OAK STREET
LA CROSSE, WI 54602-2107
PH. (608) 781-8988
FAX (608) 781-8960

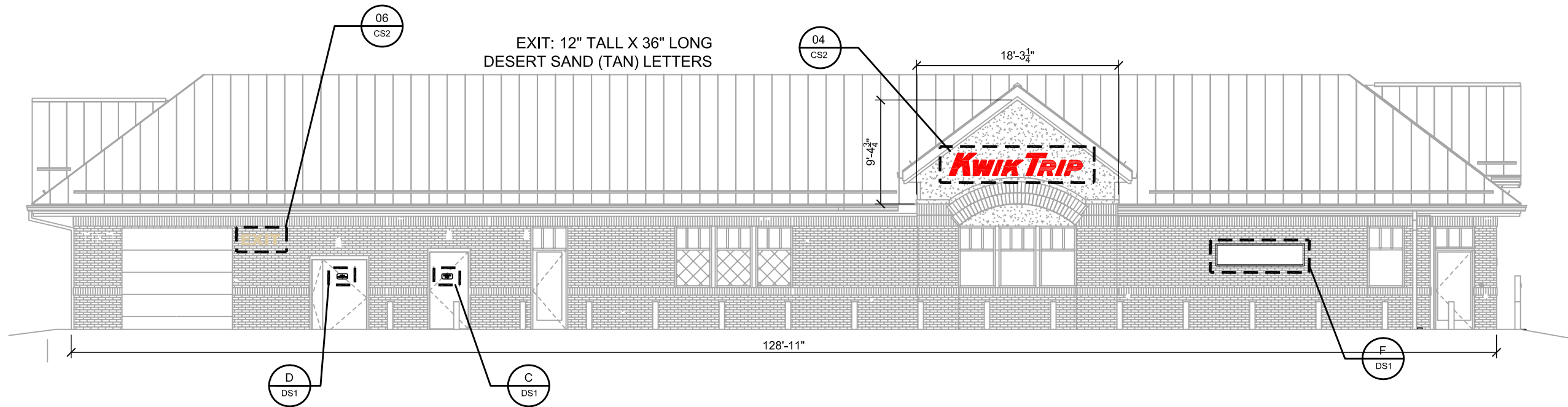
CONVENIENCE STORE SIGNAGE

CONVENIENCE STORE #1219
WITH 1 BAY CARWASH

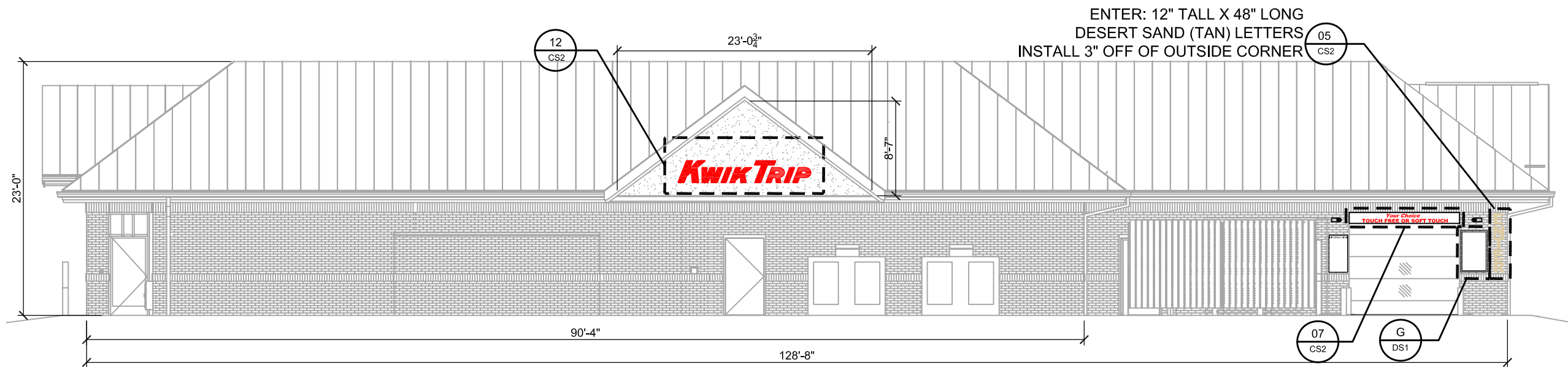
HWY 59 & X
WAUKESHA, WI

#	DATE	DESCRIPTION
1	2021/10/19	GABLE ADDED

DRAWN BY	KMK
SCALE	MULTIPLE
PROJ. NO.	0001
DATE	2021-08-16
SHEET	CS1



STORE ELEVATION
SCALE: 3/32" = 1'-0"



STORE ELEVATION
SCALE: 3/32" = 1'-0"



LOGO DETAIL - SIGNS #04 & #12
SCALE: 1/2" = 1'-0"

ENTER: 12" TALL X 48" LONG
DESERT SAND (TAN) LETTERS
INSTALL 3" OFF OF OUTSIDE CORNER

Your Choice
TOUCH FREE OR SOFT TOUCH

NON-LIT INFORMATIONAL SIGN
RED VINYL ON WHITE ALUMINUM
1'-0"H X 10'-0"W = 10.0 SQ FT

INFORMATIONAL SIGN #07
SCALE: 1/2" = 1'-0"

**KWIK
TRIP**

**KWIK
STAR**

KWIK TRIP, Inc.
P.O. BOX 2107
1626 OAK STREET
LA CROSSE, WI 54602-2107
PH. (608) 781-8988
FAX (608) 781-8960

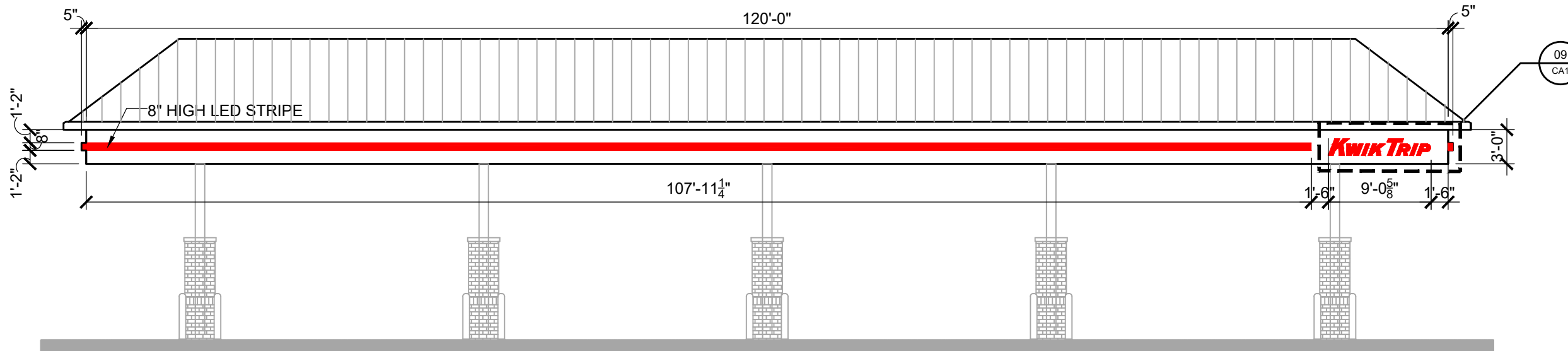
CONVENIENCE STORE SIGNAGE

CONVENIENCE STORE #1219
WITH 1 BAY CARWASH

HWY 59 & X
WAUKESHA, WI

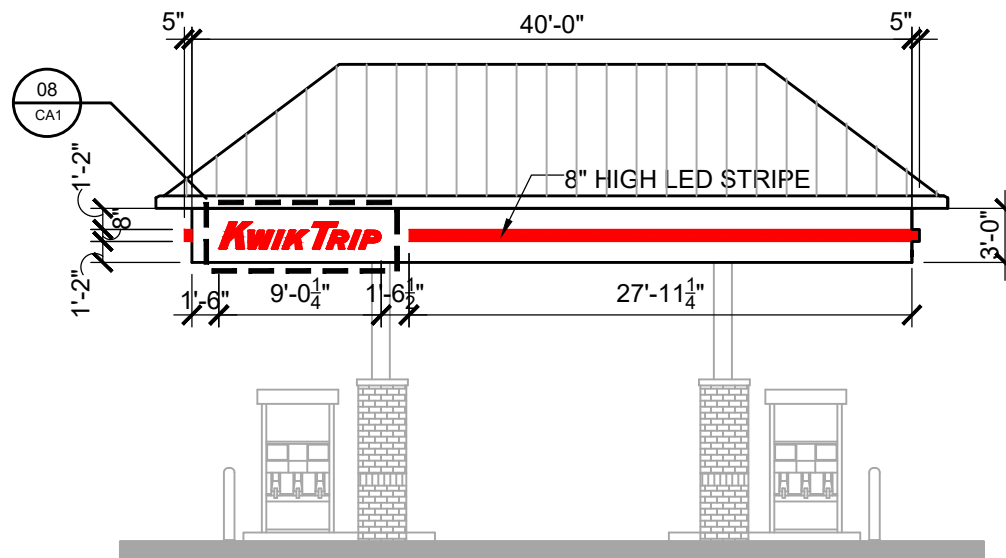
#	DATE	DESCRIPTION
△	2021/10/19	GABLE ADDED

DRAWN BY	KMK
SCALE	MULTIPLE
PROJ. NO.	0001
DATE	2021-08-16
SHEET	CS2



CANOPY ELEVATION

SCALE: 3/32" = 1'-0"



CANOPY ELEVATION

SCALE: 3/32" = 1'-0"



LOGO DETAIL - SIGNS #08 & #09

SCALE: 1/2" = 1'-0"

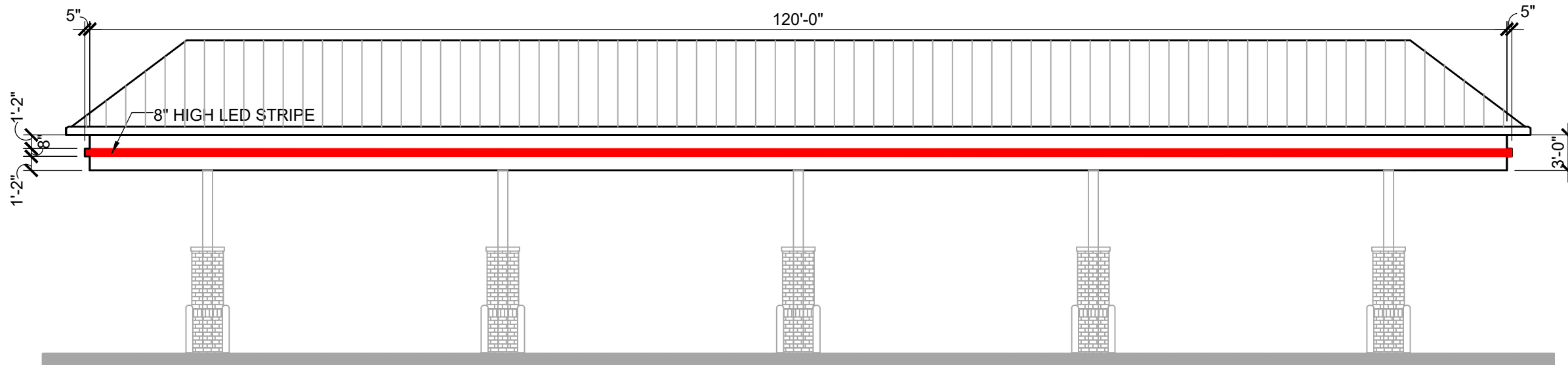


KWIK TRIP, Inc.
 P. O. BOX 2107
 1626 OAK STREET
 LA CROSSE, WI 54602-2107
 PH. (608) 781-8988
 FAX (608) 781-8960

CANOPY SIGNAGE
 CONVENIENCE STORE #XXX
 WITH 1 BAY CARWASH
 HWY 59 & X
 WAUKESHA, WI

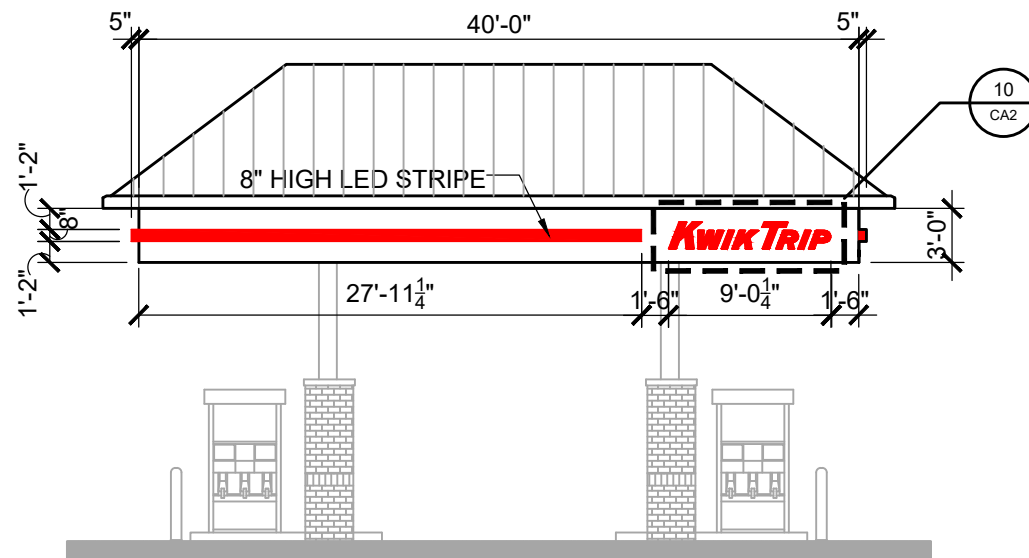
#	DATE	DESCRIPTION

DRAWN BY: KMK
 SCALE: MULTIPLE
 PROJ. NO.: 0001
 DATE: 2021-08-16
 SHEET: CA1



CANOPY ELEVATION

SCALE: 3/32" = 1'-0"



CANOPY ELEVATION

SCALE: 3/32" = 1'-0"



LOGO DETAIL - SIGN #10

SCALE: 1/2" = 1'-0"



KWIK TRIP, Inc.
 P. O. BOX 2107
 1626 OAK STREET
 LA CROSSE, WI 54602-2107
 PH. (608) 781-8988
 FAX (608) 781-8960

CANOPY SIGNAGE
 CONVENIENCE STORE #XXX
 WITH 1 BAY CARWASH
 HWY 59 & X
 WAUKESHA, WI

#	DATE	DESCRIPTION

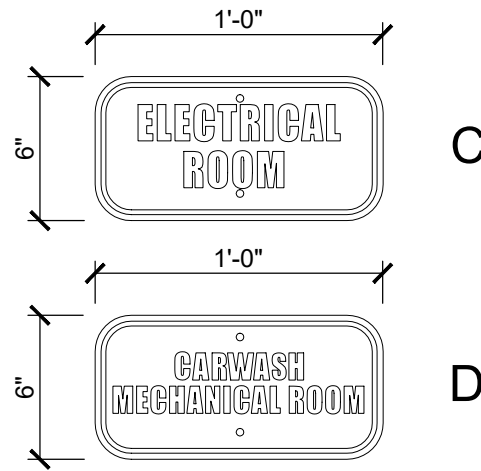
DRAWN BY: KMK
 SCALE: MULTIPLE
 PROJ. NO.: 0001
 DATE: 2021-08-16
 SHEET: CA2



5" WHITE VINYL ADDRESS LETTERS
ON GLASS DOOR AS SHOWN ABOVE
(VERIFY ACTUAL NUMBERS WITH PROJECT MANAGER)

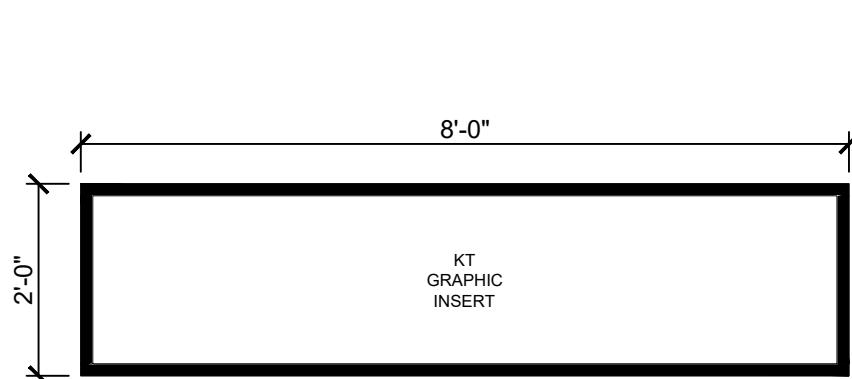
ADDRESS SIGN A

SCALE: 3/4" = 1'-0"

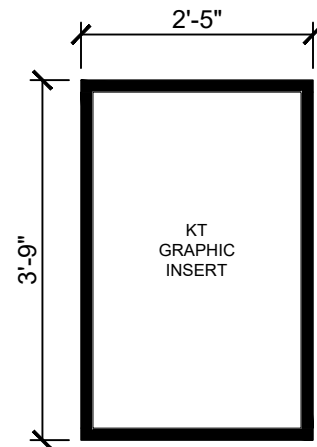


INFORMATIONAL SIGNS C & D

SCALE: 1 1/2" = 1'-0"



"SIGN F"
BLACK ALUMINUM FRAME



"SIGN G"
BLACK ALUMINUM FRAME



NON-LIT DIRECTIONAL SIGN
WHITE VINYL ON RED ALUMINUM
1'-0"H X 4'-0"W = 4.0 SQ FT

DIRECTIONAL SIGN #02

SCALE: 3/4" = 1'-0"

GENERAL SPECIFICATIONS

ROOM SIGNS
Qty: 3 total (different copy on each)
Size: per art
Material: white sign blank
Finish: cut vinyl

Install along with various signs for same site, crew to give to KT trim guys to install.

KWIK TRIP

KWIK STAR

KWIK TRIP, Inc.
P.O. BOX 2107
1626 OAK STREET
LA CROSSE, WI 54602-2107
PH. (608) 781-8988
FAX (608) 781-8960

DIRECTIONAL SIGNAGE

CONVENIENCE STORE #XXX
WITH 1 BAY CARWASH

HWY 59 & X
WAUKESHA, WI

#	DATE	DESCRIPTION

DRAWN BY	KMK
SCALE	MULTIPLE
PROJ. NO.	0001
DATE	2021-08-16
SHEET	DS1

INFORMATIONAL SIGNS F & G

SCALE: 1/2" = 1'-0"

#11 KWIK TRIP FREESTANDING PYLON SIGN

SEE ATTACHMENT FROM LA CROSSE SIGN CO

**KWIK
TRIP**

**KWIK
STAR**

KWIK TRIP, Inc.
P.O. BOX 2107
1626 OAK STREET
LA CROSSE, WI 54602-2107
PH. (608) 781-8988
FAX (608) 781-8960

DIRECTIONAL SIGNAGE

CONVENIENCE STORE #XXX
WITH 1 BAY CARWASH

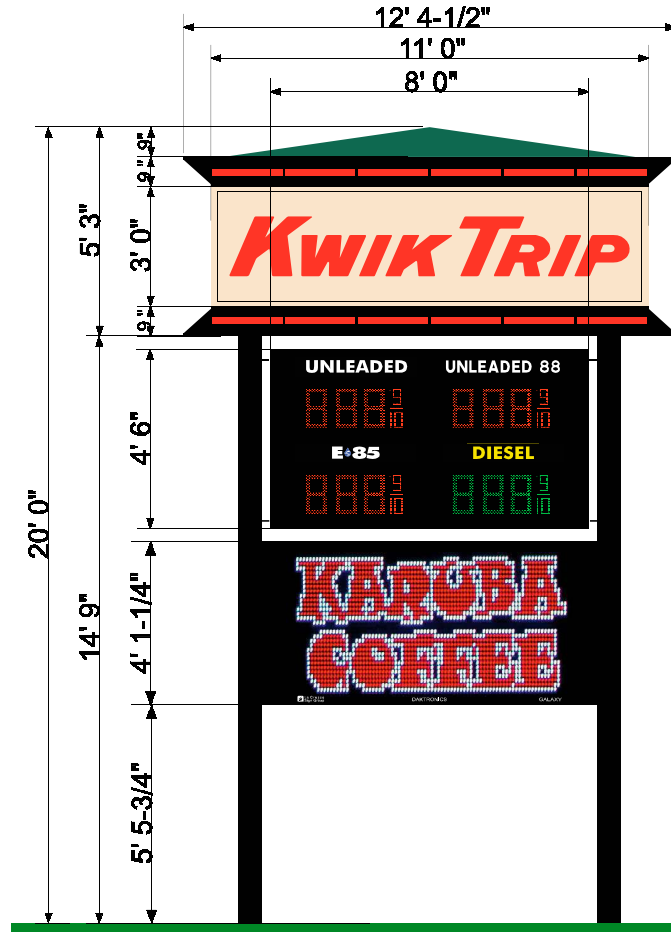
HWY 59 & X
WAUKESHA, WI

#	DATE	DESCRIPTION

DRAWN BY: KMK
SCALE: MULTIPLE
PROJ. NO.: 0001
DATE: 2021-08-16
SHEET: DS2

DOUBLE FACED PYLON

59/X Waukesha, W

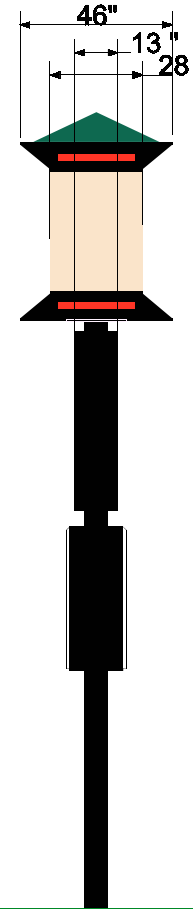


ID Cabinet
3' 0" x 11' 0"
33 SF

12" Pricer Cabinet
4' 6" x 8' 0"
36 SF

Message Center
108x216
10mm RGB
Active SF 25.91
Overall SF 30.57

Total SF
99.57



Approved by: _____ Date: _____ Landlord: _____ Date: _____

This artwork is copyrighted and may not be otherwise used without permission. It is the property of La Crosse Sign Co., inc., and must be returned to the originator.

lacrossesign.com



1450 Oak Forest Drive • Onalaska, WI 54650 • 608-781-1450
2242 Mustang Way • Madison, WI 53718 • 608-222-5353
2502 Melby Street • Eau Claire, WI 54703 • 715-835-6189

DESIGN	SALES	FILE
Drawing by: Danielle Hadley	Job Name: Kwik Trip	Revision Number:
Sign Type: Pylon	Job Address:	Job File Location:
Date Created: 3/7/2019	Salesperson: Cindy Bluske	
Last Modified:	Job Number:	
Scale: 3/16" = 1' 0"		

COLOR KEY	
a	NA 208080 Beige
b	Black S/G paint
c	#2283 Red Acrylic
d	White of Acrylic
e	Red LED
f	NA 307880 Hemlock Green
g	Green LED
h	Black (230-22)
i	Yellow (230-015)
j	Blue (230-167)

*COLORS ON SKETCH ARE ONLY A REPRESENTATION. ACTUAL COLOR OF FINISHED PRODUCT MAY DIFFER.

