



**City of Waukesha**  
201 Delafield Street  
Waukesha, WI 53188  
Tel: 262.542.3700  
waukesha-wi.gov

## City of Waukesha Cover Sheet

<b>Committee:</b> Building and Grounds	<b>Meeting Date:</b> December 1, 2025
<b>ID Number:</b> ID#25-02584	<b>Ordinance/Resolution Number (if applicable):</b>
<b>Name of Submitter:</b> Department of Public Works	<b>Board/Council Meeting Date:</b> December 16, 2025
<b>Agenda Item Title:</b> Review and possible action on the removal of the “No Turn on Red” sign at the intersection of E. Broadway and Hartwell Avenue.	

<b>Issue Before the Board/Council:</b> This item was brought forward by Ald. Moltzan for the removal of the “No Turn on Red” sign at the intersection of E. Broadway and Hartwell Avenue.
<b>Options &amp; Alternatives:</b> 1. Approve the removal of the sign 2. Do not remove the sign
<b>Additional Details:</b> Public Works staff will present the findings.



**City of Waukesha**  
201 Delafield Street  
Waukesha, WI 53188  
Tel: 262.542.3700  
waukesha-wi.gov

**What is the Strategic Plan Priority this item relates to:**

N/A

**What impact will this item have on the Strategic Plan Priority?**

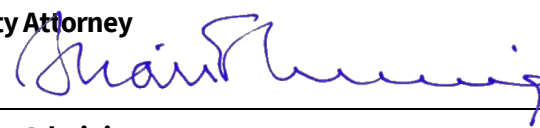
N/A

**Financial Remarks:**

There is no cost for the sign removal.

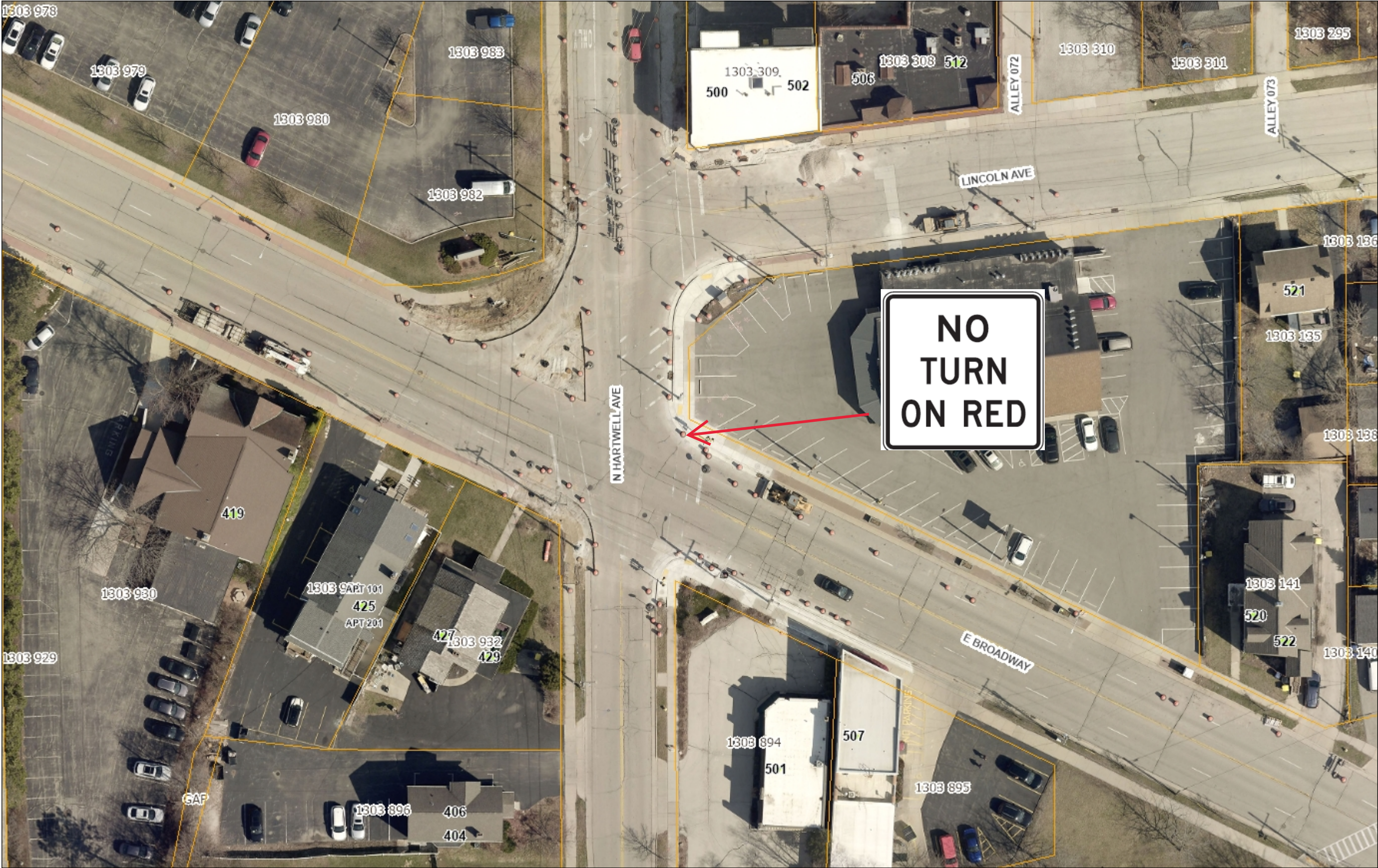
**Suggested Motion:**

**Reviewed By:**

<b>Finance Director</b>	<b>Date Reviewed</b>
<b>City Attorney</b> 	<b>Date Reviewed</b> 20 Nov 2025
<b>City Administrator</b> 	<b>Date Reviewed</b> 11/21/2025



City of Waukesha Property Map



Legend

- Address Labels
  - Active
  - Pending
  - Utility
  - Vacant
  - Removed
- Parcels
- Taxkey Labels
- City Limits
- Railroads
- Water Bodies
- Landmarks
  - Cemetery
  - County
  - Municipal
  - Hospital
  - Parks
  - School
  - State/Federal

1: 500



83.3 0 41.67 83.3 Feet

Print Date: 11/11/2025  
City of Waukesha GIS

This map is a user generated static output from an Internet mapping site and is for reference only. The data found on this site is considered to be correct, but should not be used for engineering or survey applications without verifying the information from officially recorded sources.

Notes: