



eppstein uhen : architects

milwaukee 333 East Chicago Street  
Milwaukee, Wisconsin 53202  
414.271.5350

madison 309 West Johnson Street, Suite 202  
Madison, Wisconsin 53703  
608.442.5350

des moines 699 Walnut Street, Suite 400  
Des Moines, Iowa 50309  
515.274.5840

denver 1899 Wynkoop Street, Suite 300  
Denver, Colorado 80202  
303.595.4500

PROJECT INFORMATION

WAUKESHA MEMORIAL HOSPITAL - NORTH WING RENOVATIONS

725 AMERICAN AVENUE, WAUKESHA, WI 53188



ISSUANCE AND REVISIONS

DATE	DESCRIPTION
12/20/2018	PLAN COMMISSION SUBMITTAL

KEY PLAN

SHEET INFORMATION

PROGRESS DOCUMENTS NOT FOR CONSTRUCTION

These documents reflect progress and intent and may be subject to change, including additional detail. These are not final construction documents and shall not be used for final bidding or construction-related purposes.

PROJECT MANAGER

PROJECT NUMBER 418190

DETAILED SITE LAYOUT PLAN

C201

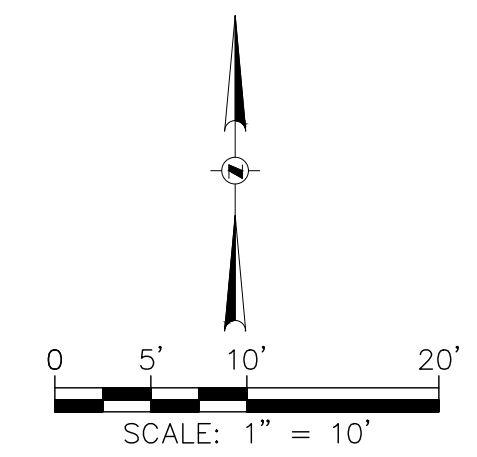
© Eppstein Uhen Architects, Inc.

GENERAL NOTES

1. SEE SHEET C200 FOR GENERAL NOTES.

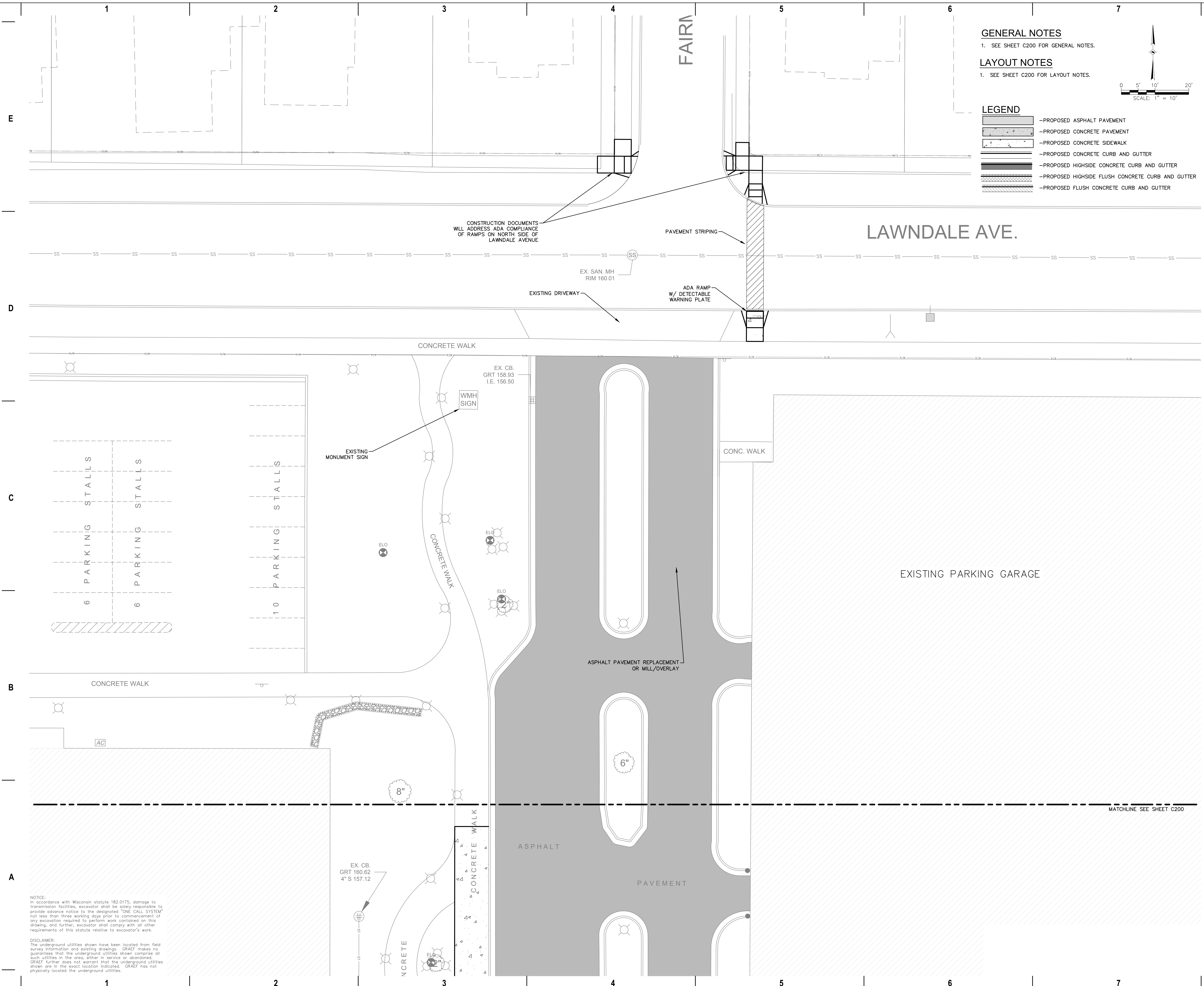
LAYOUT NOTES

1. SEE SHEET C200 FOR LAYOUT NOTES.



LEGEND

- PROPOSED ASPHALT PAVEMENT
- PROPOSED CONCRETE PAVEMENT
- PROPOSED CONCRETE SIDEWALK
- PROPOSED CONCRETE CURB AND GUTTER
- PROPOSED HIGHSIDE CONCRETE CURB AND GUTTER
- PROPOSED HIGHSIDE FLUSH CONCRETE CURB AND GUTTER
- PROPOSED FLUSH CONCRETE CURB AND GUTTER



CONSTRUCTION DOCUMENTS WILL ADDRESS ADA COMPLIANCE OF RAMPS ON NORTH SIDE OF LAWNSDALE AVENUE

EXISTING DRIVEWAY

PAVEMENT STRIPING

ADA RAMP W/ DETECTABLE WARNING PLATE

LAWNSDALE AVE.

CONCRETE WALK

EX. CB. GRT 158.93 I.E. 156.50

W.M.H. SIGN

EXISTING MONUMENT SIGN

CONC. WALK

EXISTING PARKING GARAGE

ASPHALT PAVEMENT REPLACEMENT OR MILL/OVERLAY

6"

8"

ASPHALT

PAVEMENT

CONCRETE

EX. CB. GRT 160.62 4" S 157.12

NOTICE:  
In accordance with Wisconsin statute 182.0175, damage to transmission facilities, excavator shall be solely responsible to provide advance notice to the designated "ONE-CALL SYSTEM" not less than three working days prior to commencement of any excavation required to perform work contained on this drawing, and further, excavator shall comply with all other requirements of this statute relative to excavator's work.

DISCLAIMER:  
The underground utilities shown have been located from field survey information and existing drawings. GRAEF makes no guarantee that the underground utilities shown comprise all such utilities in the area, either in service or abandoned. GRAEF further does not warrant that the underground utilities shown are in the exact location indicated. GRAEF has not physically located the underground utilities.

X:\ML\2018\20180420\CAD\Site\dwg\00C\_00\_C200\_Layout\_420 12/19/2018 4:49 PM