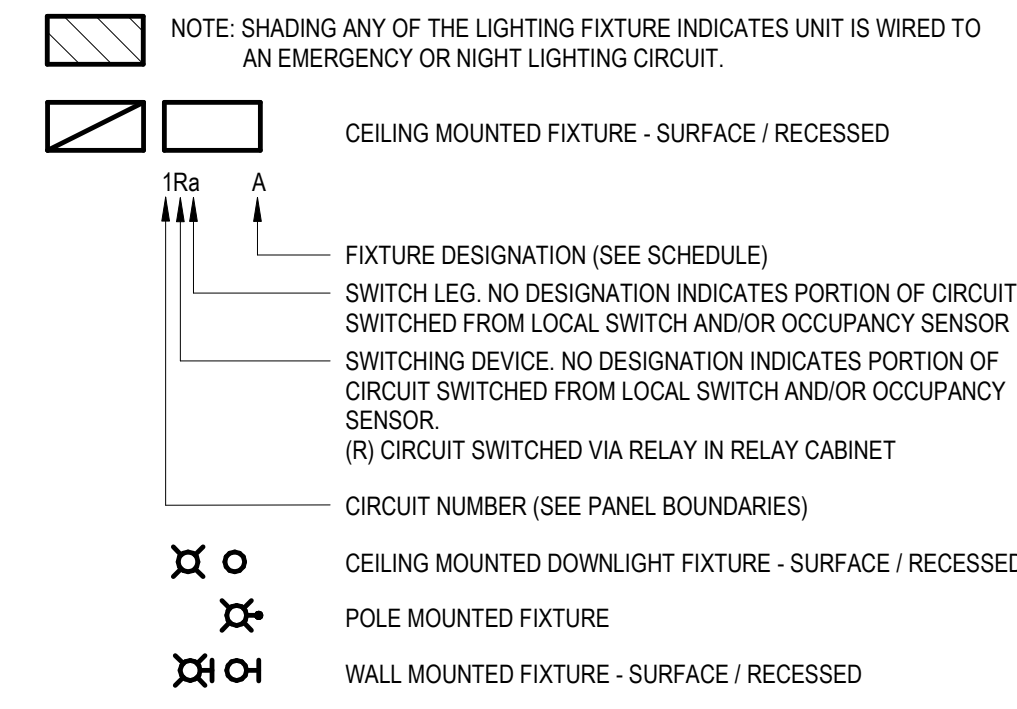


Statistics						
Description	Symbol	Avg	Max	Min	Max/Min	Avg/Min
East Parking & Drive	+	3.3 fc	10.6 fc	0.5 fc	21.2:1	6.6:1
Front Entry	+	4.3 fc	7.7 fc	2.2 fc	3.5:1	2.0:1
Front Parking & Drive	+	2.6 fc	3.7 fc	0.3 fc	12.3:1	8.7:1
North Bays	+	1.9 fc	7.0 fc	0.6 fc	11.7:1	3.2:1
North Drive	+	3.7 fc	11.5 fc	0.4 fc	28.8:1	9.3:1
Property Line	+	0.0 fc	0.4 fc	0.0 fc	N/A	N/A
South Drive	+	1.8 fc	3.3 fc	0.5 fc	6.6:1	3.6:1
Wash Bay	+	5.8 fc	10.4 fc	1.8 fc	5.8:1	3.2:1
West Drive	+	2.2 fc	4.6 fc	0.2 fc	23.0:1	11.0:1
West Entrance & Sidewalks	+	4.1 fc	7.2 fc	1.2 fc	6.0:1	3.4:1
West Parking	+	2.5 fc	6.0 fc	1.5 fc	4.0:1	1.7:1
Detached Bays	+	5.5 fc	9.5 fc	3.6 fc	2.6:1	1.5:1

3 EAST CANOPY SECTION VIEW
E101-PC 1/8" = 1'-0"

2 ENLARGED EAST CANOPY PLAN
E101-PC 1/8" = 1'-0"

LIGHTING:



GENERAL NOTES:

- SITE LIGHTING PHOTOMETRIC CALCULATIONS WERE PERFORMED IN VISUAL 2020 LIGHTING SOFTWARE.
- ALL PHOTOMETRICS POINTS ARE AT +0'-0" AFG.

REFERENCE NOTES:

- DOWNLIGHT FIXTURE SHALL BE MOUNTED IN LOWER CANOPY. REFER TO SECTION 3/E101-PC.
- WALL WASH FIXTURE SHALL BE MOUNTED IN UPPER CANOPY. REFER TO SECTION 3/E101-PC.

PROJECT

PROJECT:
Operations Center
1200 Chapman Drive, Waukesha,
Wisconsin 53189

OWNER:
Waukesha Water Utility

PROJECT ISSUE DATE:
February 25, 2025

KUENY ARCHITECTS

10505 Corporate Drive, Pleasant Prairie, WI 53158
phone: 262.857.8101 web: www.kuenyarch.com

©2025 Kueny Architects L.L.C. - All Rights Reserved

CONSULTANTS

ARCHITECT:
Kueny Architects
Phone: 262.857.8101
Address: 10505 Corporate Drive, Suite 100
Pleasant Prairie, Wisconsin 53158

Architect of Record - Jon P. Wallenkamp
P:414.690.3197

Project Manager - Lee Anderson
P:262.945.7708

CIVIL:
TerraTec Engineering
Phone: 262.377.9905
Address: W67N222 Evergreen Blvd., Suite 205
Cedarburg, WI 53012

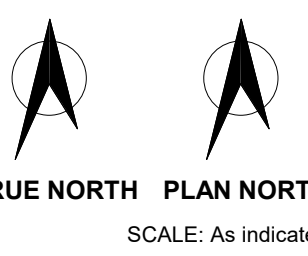
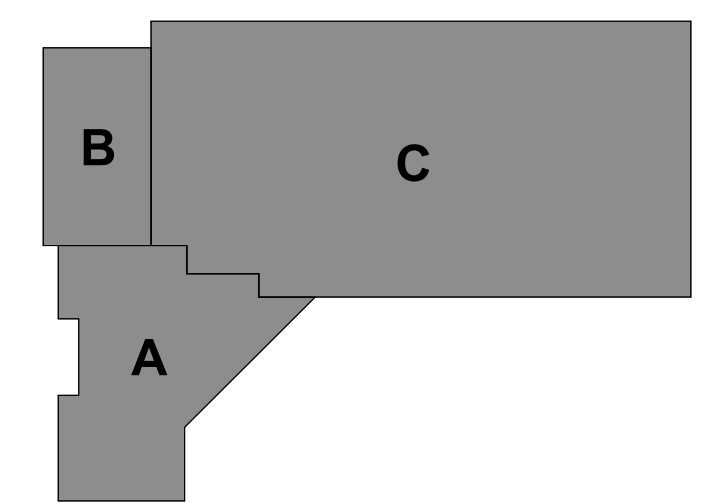
Engineer of Record - Linda Johnson

MEP:
RTM Engineering Consultants
Phone: 414.273.1432
Address: 316 N. Milwaukee Street, Suite 560
Milwaukee, WI 53202
Engineer of Record - Timothy Larsen, PE

REVISIONS

REV #	DESCRIPTION	DATE

KEY PLAN



SHEET

SHEET TITLE:
ELECTRICAL SITE PLAN - PLAN COMMISSION

E101-PC

NOT FOR CONSTRUCTION

PROJECT

PROJECT:
Operations Center
 1280 Chapman Drive, Waukesha,
 Wisconsin 53189

OWNER:
 Waukesha Water Utility

PROJECT ISSUE DATE:
 February 25, 2025



10505 Corporate Drive, Pleasant Prairie, WI 53158
 phone: 262.857.8101 web: www.kuenyarch.com

©2025 Kueny Architects L.L.C. - All Rights Reserved

CONSULTANTS

ARCHITECT

Kueny Architects
 Phone: 262.857.8101
 Address: 10505 Corporate Drive, Suite 100
 Pleasant Prairie, Wisconsin 53158

Architect of Record - Jon P. Walkenkamp
 P:414.680.3197

Project Manager - Lee Anderson
 P:262.945.7708

CIVIL

TerraTec Engineering
 Phone: 262.377.9905
 Address: W67N222 Evergreen Blvd., Suite 205
 Cedarburg, WI 53012

Engineer of Record - Linda Johnson

MEP

RTM Engineering Consultants
 Phone: 414.273.1432
 Address: 316 N. Milwaukee Street, Suite 560
 Milwaukee, WI 53202

Engineer of Record - Timothy Larsen, PE

REVISIONS

REV #	DESCRIPTION	DATE

KEY PLAN

SCALE: As Indicated

SHEET

SHEET TITLE:

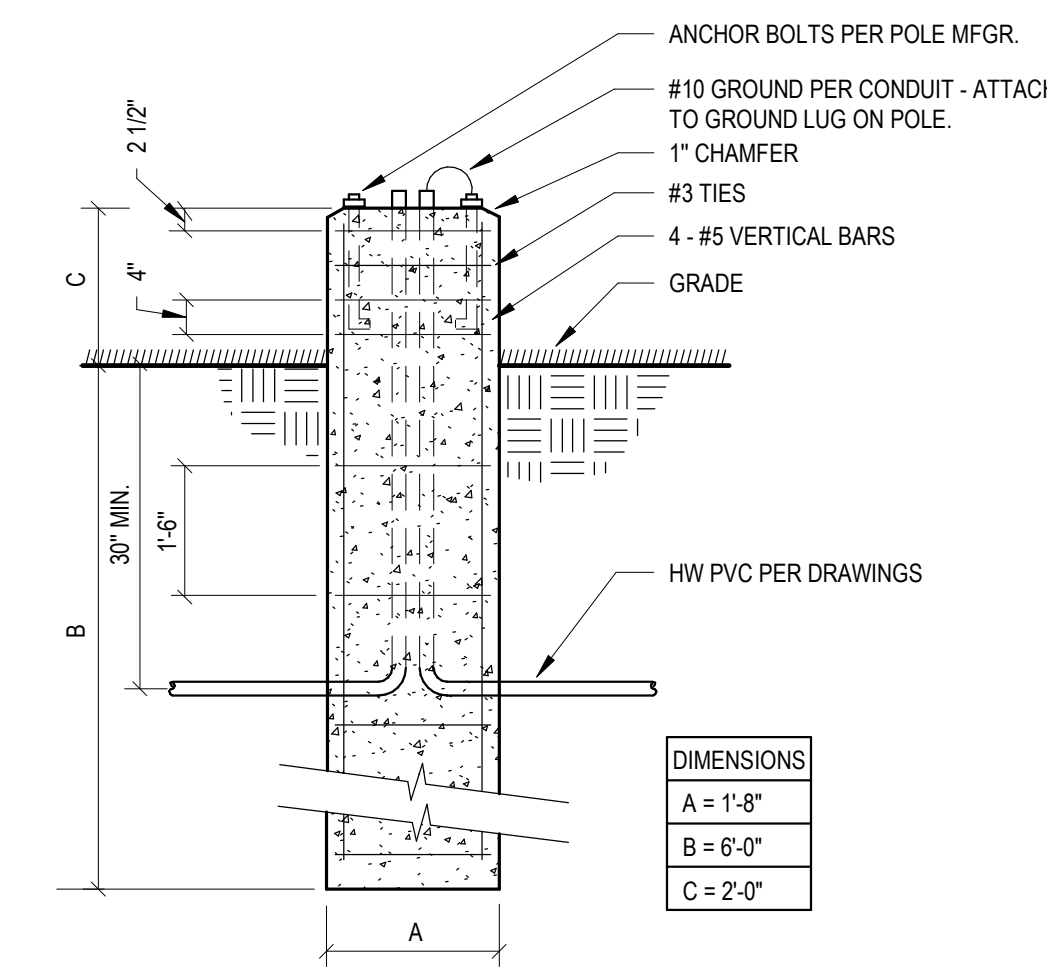
**ELECTRICAL SITE
 PLAN - PLAN
 COMMISSION**

E102-PC

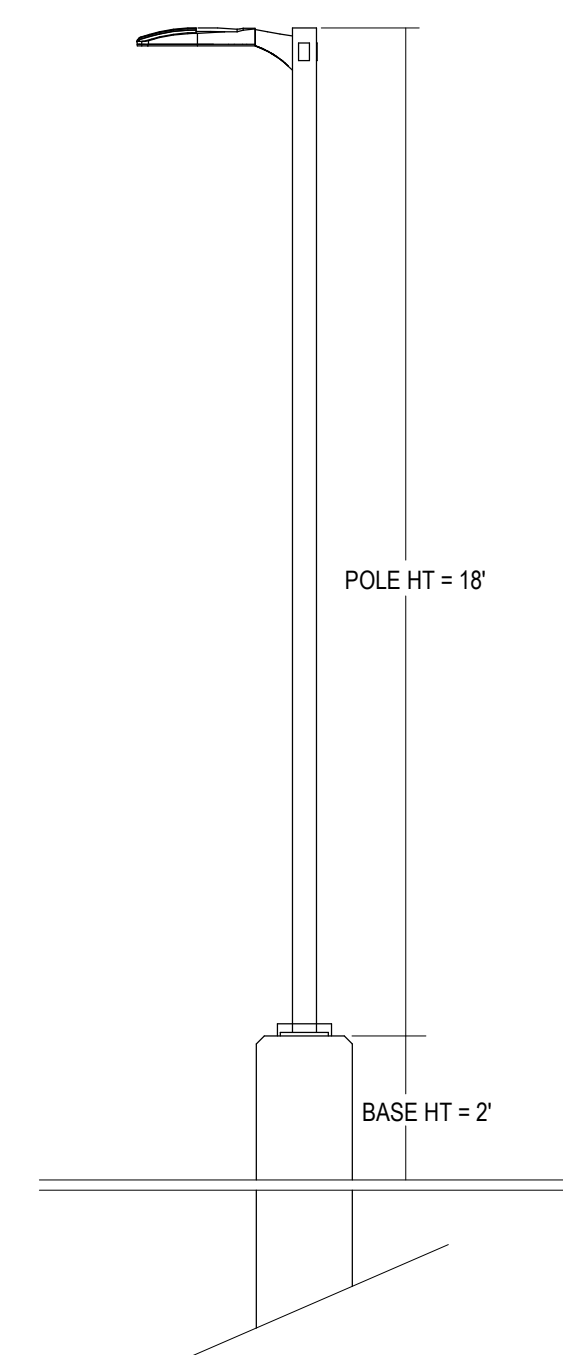
LIGHTING FIXTURE SCHEDULE

TYPE	DESCRIPTION	FIXTURE TYPE	LIGHT SOURCE			DRIVER BALLAST		INPUT		MOUNTING			CEILING		FIXTURE DEPTH	MANUFACTURER	SPECIFIED FIXTURE		OPTIONS	FINISH	REMARKS
			DESCRIPTION	K	CRI	TYPE	NO.	WATTS	VOLTS	TYPE	HEIGHT	TYPE	HEIGHT	MODEL NO.			MODEL NO.				
OA	4" DOWNLIGHT - EXTERIOR	LED	IN UNIT	4000	+80	0-10V	1	5	120	R	--	ES	4 1/2"	GOTHAM	IV04-D-05LH-40K-80CRI-WDAMN1-MVOLT-ZT-NCH-WL-P-AR-LSS-F	--	WH	--			
OB	4" WALL WASH DOWNLIGHT - EXTERIOR	LED	IN UNIT	4000	+80	0-10V	1	5	120	R	--	V	4 1/2"	GOTHAM	IV04-WW-05LH-40K-80CRI-WDAMN1-MVOLT-ZT-NCH-WL-P-AR-LSS-F	--	SF	--			
OC	6" WALL SCONCE - UPDOWN	LED	IN UNIT	4000	+80	0-10V	1	31	120	W	20'-0" TCF AFG	N	14"	LUMINIS	SY822-L2L15-FLD-LDD-40K-120-HP	--	BK	--			
OD	WALL PACK - EXTERIOR	LED	IN UNIT	4000	+80	0-10V	1	19	120	W	11'-0" TCF AFG	N	7"	LITHONIA	WDGE2-LED-P2-40K-80CRI-T3M-MVOLT-SRM-DMG-PRH1FC3V-DBLXD	--	BK	--			
OE	WALL PACK - EXTERIOR	LED	IN UNIT	4000	+80	0-10V	1	19	120	W	11'-0" TCF AFG	N	7"	LITHONIA	WDGE2-LED-P2-40K-80CRI-T3M-MVOLT-SRM-DMG-PRH1FC3V-DBLXD	--	BK	--			
OF	WALL PACK - EXTERIOR	LED	IN UNIT	4000	+80	0-10V	1	52	120	W	18'-0" TCF AFG	N	8"	LITHONIA	WDGE3-LED-P1-40K-80CRI-R3-MVOLT-SRM-DMG-PRH1FC3V-DBLXD	--	BK	--			
OG	WALL PACK - EXTERIOR	LED	IN UNIT	4000	+80	0-10V	1	88	120	W	20'-0" TCF AFG	N	8"	LITHONIA	WDGE3-LED-P4-40K-80CRI-R2-MVOLT-SRM-PRH1FC3V-DBLXD	--	BK	--			
OH	8'-0" STRIP LIGHT	LED	IN UNIT	4000	+80	0-10V	1	49	120	S	14'-0" TTF AFG	ES	4"	LITHONIA	CSVT-L96-600LM-MVOLT-40K-80CRI-SB0R10-P	--	SF	--			
OI	BUILDING MOUNTED FIXTURE - TYPE P7 T2M	LED	IN UNIT	4000	+80	0-10V	1	188	208	W	SFP TTF AFG	N	8"	LITHONIA	DSX1-LED-P7-40K-80CRI-T2M-MVOLT-WBA-DMG-DBLXD	--	BK	--			
OJ	BUILDING MOUNTED FIXTURE - TYPE P8 TFTM	LED	IN UNIT	4000	+80	0-10V	1	216	208	W	SFP TTF AFG	N	8"	LITHONIA	DSX1-LED-P8-40K-80CRI-TFTM-MVOLT-WBA-DMG-DBLXD	--	BK	--			
OK	POLE MOUNTED FIXTURE - TYPE P4 BLCA	LED	IN UNIT	4000	+80	0-10V	1	125	208	PL	20'-0" TCF AFG	N	8"	LITHONIA	DSX1-LED-P4-40K-80CRI-BLCA-MVOLT-SPA-DMG-DBLXD	--	BK	1			
OL	POLE MOUNTED FIXTURE - TYPE P7 T2M	LED	IN UNIT	4000	+80	0-10V	1	188	208	PL	20'-0" TCF AFG	N	8"	LITHONIA	DSX1-LED-P7-40K-80CRI-T2M-MVOLT-SPA-DMG-DBLXD	--	BK	1			
OM	POLE MOUNTED FIXTURE - TYPE P7 T5M	LED	IN UNIT	4000	+80	0-10V	1	142	208	PL	20'-0" TCF AFG	N	8"	LITHONIA	DSX1-LED-P7-40K-80CRI-T5M-MVOLT-SPA-DMG-DBLXD	--	BK	1			
ON	POLE MOUNTED FIXTURE - TYPE P8 TFTM	LED	IN UNIT	4000	+80	0-10V	1	216	208	PL	20'-0" TCF AFG	N	8"	LITHONIA	DSX1-LED-P8-40K-80CRI-TFTM-MVOLT-SPA-DMG-DBLXD	--	BK	1			
OP	POLE MOUNTED FIXTURE - TYPE P9 TFTM	LED	IN UNIT	4000	+80	0-10V	1	279	208	PL	20'-0" TCF AFG	N	8"	LITHONIA	DSX1-LED-P9-40K-80CRI-TFTM-MVOLT-SPA-DMG-DBLXD	--	BK	1			
OQ	FLAGPOLE FIXTURE	LED	IN UNIT	5000	+80	ST	1	11	120	S	--	N	5 1/2"	LITHONIA	OLBF-850K-DOB	--	BZ	--			

FIXTURE TYPE	CEILING TYPE	DRIVER/BALLAST TYPE	FINISHES	MOUNTING TYPE	LIGHT FIXTURE SCHEDULE REMARKS:
ABBR. DESCRIPTION	ABBR. DESCRIPTION	ABBR. DESCRIPTION	ABBR. DESCRIPTION	ABBR. DESCRIPTION	1. PROVIDED WITH LITHONIA TYPE SSS POLE, MODEL NUMBER SSS-18-4C-DM19AS-S1LHCC-FBCSTL2PC-DBLXD. PROVIDE WITH METAL POLE BASE COVER. REFER TO DETAILS 1E102-PC & 2E102-PC FOR POLE BASE & POLE HEIGHT DETAILS.
F FLOURESCENT	DW DRYWALL	D1 0-10V DIMMING	A0 COLOR AS SELECTED BY ARCHITECT/OWNER	AFF ABOVE FINISH FLOOR	
H HID	ES EXPOSED STRUCTURE	D1 DIMMING 1-100%	BA BRUSHED ALUMINUM	AFG ABOVE FINISH GRADE	
HAL HALOGEN	LG LAY-IN GRID	D5 DIMMING 5-100%	BK BLACK	P PENDANT	
I INCANDESCENT	N NONE	D10 DIMMING 10-100%	BN BRUSHED NICKEL	PL POLE	
LED LIGHT EMITTING DIODE	V VARIES	DST STEP DIMMING 50/100%	BZ BRONZE	R RECESS	
		ET ELECTRONIC	CF CUSTOM FINISH	S SURFACE	
		M MAGNETIC	SF STANDARD FINISH	TBF TO BOTTOM OF FIXTURE	
		PS PULSE START	SN SATIN NICKEL	TCF TO CENTER OF FIXTURE	
		ST STANDARD	SS SEMI-SPECULAR	TTF TO TOP OF FIXTURE	
		XFMR TRANSFORMER	WH WHITE	W WALL MOUNTED	



1 POLE BASE DETAIL
 E102-PC SCALE: N.T.S.



2 POLE HEIGHT DETAIL
 E102-PC SCALE: N.T.S.

GENERAL NOTES:
 1. TOTAL FIXTURE HEIGHT FROM GRADE TO TOP OF POLE ASSEMBLY & FIXTURE NOT TO EXCEED 20'-0".

NOT FOR CONSTRUCTION