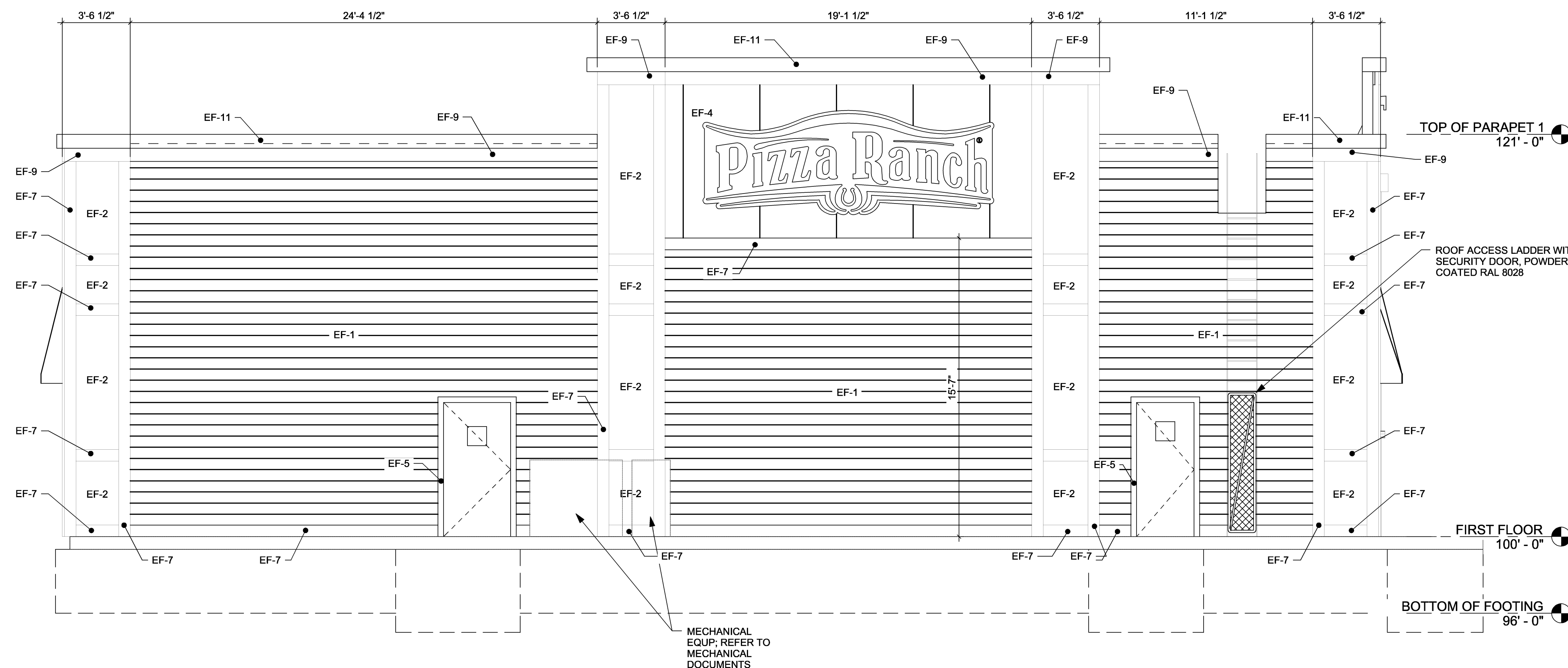


1 NORTH EXTERIOR ELEVATION
1/4" = 1'-0"



2 WEST EXTERIOR ELEVATION
1/4" = 1'-0"

HEAVY DASHED LINE INDICATES LED LIGHTING UNDERNEATH PARAPET / TRIM, TYPE R, TYPICAL; REFER TO ELECTRICAL DOCUMENTS

TOP OF PARAPET 3 125' - 0"

TOP OF PARAPET 2 123' - 0"

TOP OF PARAPET 1 121' - 0"

FIRST FLOOR 100' - 0"

BOTTOM OF FOOTING 96' - 0"

MECHANICAL EQUIP.; REFER TO MECHANICAL DOCUMENTS

- SHEET NOTES**
- REFER TO ADDITIONAL NOTES AND REQUIREMENTS ON ALL OTHER DOCUMENTS AND OTHER DISCIPLINES' DOCUMENTS.
 - ALL HORIZONTAL TRANSITIONS BETWEEN DIFFERENT MATERIALS SHALL BE FLASHED CONTINUOUS FROM UP BEHIND TO UNDER UPPER MATERIAL AND EXTEND OVER TO EXTERIOR FACE OF LOWER MATERIAL.
 - ALL RETURNS OR BLIND ELEVATIONS NOT SHOWN SHALL BE SIMILAR IN MATERIAL AND MAKEUP TO ADJACENT CONDITIONS OR OTHER SIMILAR CONDITIONS.
 - SEAL ALL TRANSITIONS, CONTROL AND EXPANSION JOINTS AT ALL EXTERIOR MATERIALS.
 - INSULATE AND SEAL TO ENSURE ADEQUATE AIR INFILTRATION BARRIER AROUND ALL EXTERIOR PENETRATIONS TO PREVENT WATER AND SPRINKLER PIPE FREEZING.
 - PROVIDE POWER TO ALL BUILDING MOUNTED SIGNS. PROVIDE EXTERIOR LED LIGHTING ON PARAPET. CONTACT JUSTIN MULDER (1-800-321-3401) FOR LOCATIONS.



PIZZA RANCH #8610

FLEETFOOT DRIVE
WAUKESHA, WISCONSIN

TDI ASSOCIATES, INC
All Rights Reserved

OWNERSHIP OF DOCUMENTS

This document, and the ideas and design incorporated herein, as an instrument of professional service, is the sole property of TDI Associates, Inc., and is not to be used in whole or in part for any other project or purpose without the expressed written authorization of TDI Associates, Inc.

Sheet Title
Exterior Elevations

Issued For: Date:

Date: 7-19-2017

Job NO.: 15383

Drawn By:

Sheet No.

A2-12

P:\15383\15383 Pizza Ranch Waukesha\CURRENT\A2-12.dwg 7/19/2017 1:59:25 PM, Dohmsen