

CARROLL UNIVERSITY

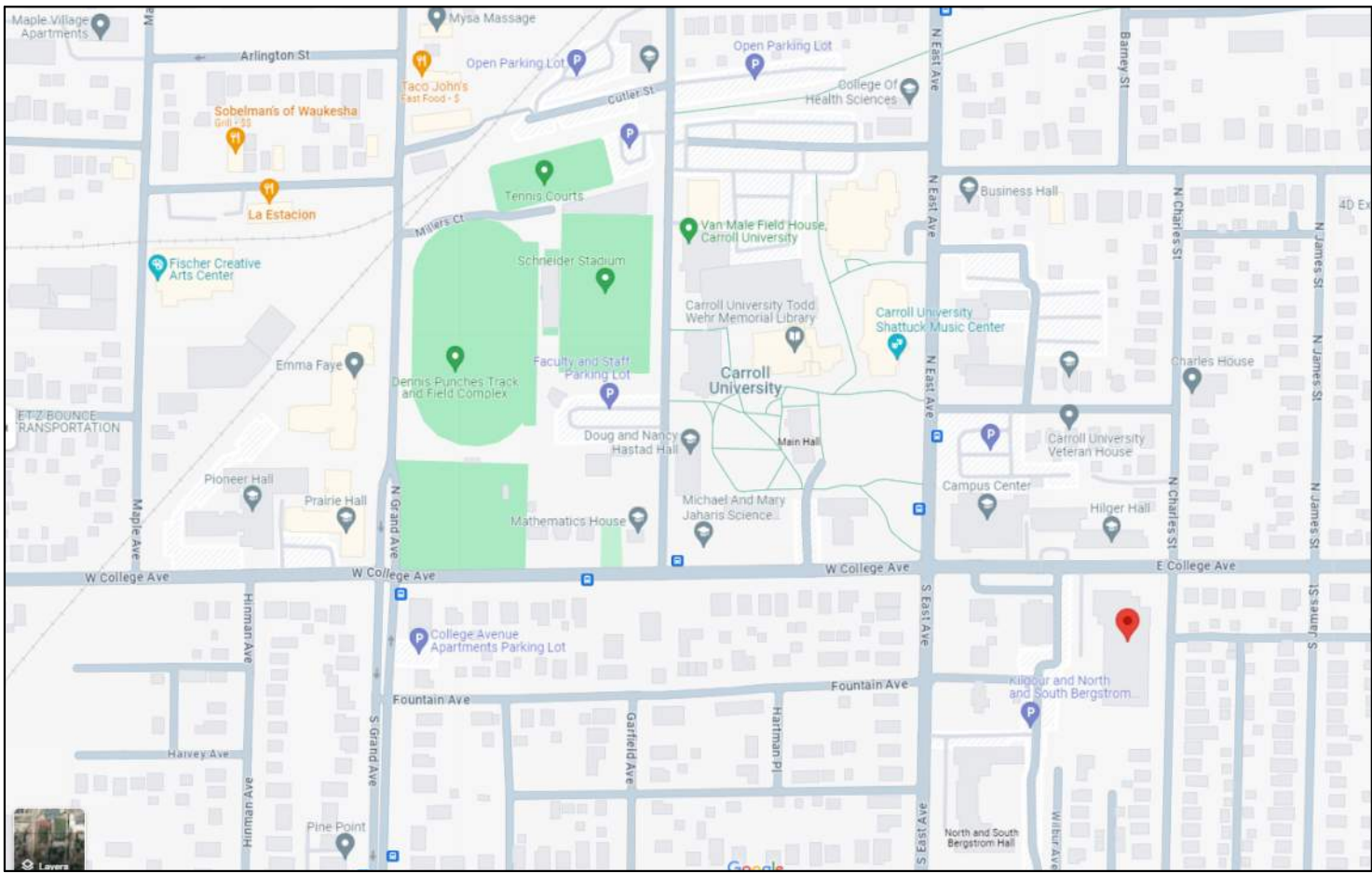
RANDALL HEALTH SCIENCE BUILDOUT

114 S CHARLES ST
WAUKESHA, WI 53186

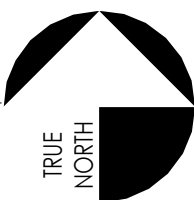
OWNER	GENERAL CONTRACTOR	ARCHITECT	STRUCTURAL ENGINEER	CIVIL ENGINEER
CARROLL UNIVERSITY 100 NORTH EAST AVENUE WAUKESHA, WI 53186 P: 262.524.7373 WWW.CARROLLU.EDU	VJS CONSTRUCTION SERVICES W233 N2847 ROUNDY CIRCLE WEST PEWAUKEE, WI 53072 P: 262.542.9000 WWW.VJSCS.COM	JAMES FRENCH W233 N2847 ROUNDY CIRCLE WEST PEWAUKEE, WI 53072 P: 262.542.9000 WWW.VJSCS.COM	EXCEL ENGINEERING 100 CAMELOT DRIVE FON DU LAC, WI 54935 P: 920.926.9800 WWW.EXCELENGINEER.COM	PINNACLE ENGINEERING GROUP 20725 WATERTOWN ROAD BROOKFIELD, WI 53186 P: 262.754.8888 WWW.PINNACLE-ENGR.COM

		SCHEMATIC DESIGN	DESIGN DEVELOPMENT	DEMO PERMIT SET	60% CONSTRUCTION DOCUMENTS	90% CONSTRUCTION DOCUMENTS	BID SET	AD-01	AD-02	AD-03	AD-04	AD-05	PLAN REVIEW	PERMIT REVIEW	FOR CONSTRUCTION	CB-01	CB-02	CB-03	CB-04	CB-05
R1.03	EXTERIOR ELEVATIONS	Unnamed																		
T1.01	TITLE SHEET		•	•																
A0.01	ABBREVIATIONS AND STANDARD MOUNTING HEIGHTS		•																	
A0.02	CODE DATA & ANALYSIS																			
A0.03	CODE DATA & ANALYSIS																			
A0.04	CODE DATA & ANALYSIS																			
A0.05	WALL TYPES		•																	
AD1.00	LOWER LEVEL DEMO PLAN				•															
AD1.01	LEVEL 1 (EAST) DEMO PLAN		•	•																
AD1.02	LEVEL 1.5 (WEST) DEMO PLAN		•	•	•															
AD1.03	LEVEL 2 (EAST) DEMO PLAN		•	•	•															
AD1.04	LEVEL 2.5 (WEST) DEMO PLAN		•	•	•															
A1.00	LOWER LEVEL FLOOR PLAN		•																	
A1.00A	LOWER LEVEL ENLARGED OFFICES AND TOILET ROOMS		•																	
A1.00B	LOWER LEVEL ENLARGED STAFF LOUNGE AND OFFICE SUITES		•																	
A1.01	LEVEL 1 (EAST)		•																	
A1.01A	LEVEL 1 ENLARGED WEST SECTION OF TAC/CURE 182		•																	
A1.01B	LEVEL 1 ENLARGED EAST SECTION OF TAC/CURE 182		•																	
A1.01C	LEVEL 1 TAC/CURE FLOOR PATTERN PLAN																			
A1.01D	LEVEL 1 ENLARGED OFFICE SUITE		•																	
A1.01E	LEVEL 1 ENLARGED CLASSROOM AND STUDENT LOUNGE																			
A1.01F	LEVEL 1 ENLARGED CLINICAL EXERCISE LAB SUITE		•																	
A1.01G	LEVEL 1 ENLARGED OT SUITE		•																	
A1.02	LEVEL 1.5 FLOOR PLAN (WEST)		•																	
A1.02A	LEVEL 1.5 ENLARGED OFFICE SUITES		•																	
A1.03	LEVEL 2 FLOOR PLAN (EAST)		•																	
A1.03A	LEVEL 2 -ENLARGED PHYSICIAN ASSISTANT		•																	
A1.03B	LEVEL 2 ENLARGED PA LAB		•																	
A1.03C	LEVEL 2 ENLARGED LARGE LECTURE 208		•																	
A1.04	LEVEL 2.5 (WEST)		•																	
A1.10	LOWER LEVEL REFLECTED CEILING PLAN		•																	
A1.11	LEVEL 1 REFLECTED CEILING PLAN		•																	
A1.12	LEVEL 1.5 REFLECTED CEILING PLAN		•																	
A1.13	LEVEL 2 REFLECTED CEILING PLAN		•																	
A1.14	LEVEL 2.5 REFLECTED CEILING PLAN		•																	
A2.01	EXTERIOR ELEVATIONS		•																	
A6.01	INTERIOR ELEVATIONS		•																	
A6.02	INTERIOR ELEVATIONS		•																	
A6.03	INTERIOR ELEVATIONS		•																	
A6.04	INTERIOR ELEVATIONS		•																	
A6.05	INTERIOR ELEVATIONS		•																	
A7.01	DETAILS		•																	
A7.02	DETAILS		•																	
A8.01	ROOM SCHEDULES		•																	
A8.02	MATERIAL SCHEDULES		•																	
A8.03	DOOR SCHEDULE		•																	
A8.10	LOWER LEVEL FLOOR PATTERN PLAN		•																	
A8.11	LEVEL 1 FLOOR PATTERN PLAN		•																	
A8.12	LEVEL 1.5 FLOOR PATTERN PLAN		•																	
A8.13	LEVEL 2 FLOOR PATTERN PLAN		•																	

ALL SITE IMPROVEMENTS AND CONSTRUCTION SHOWN ON THE PLANS SHALL CONFORM TO THE CITY OF WAUKESHA DEVELOPMENT HANDBOOK & INFRASTRUCTURE SPECIFICATIONS. WHERE THE PLANS DO NOT COMPLY, IT SHALL BE THE SOLE RESPONSIBILITY AND EXPENSE OF THE DEVELOPER TO MAKE REVISIONS TO THE PLANS AND/OR CONSTRUCTED INFRASTRUCTURE TO COMPLY.



① PROJECT LOCATION
N.T.S.



NOT FOR CONSTRUCTION



CARROLL UNIVERSITY
RANDALL HEALTH SCIENCE BUILDOUT
114 S CHARLES ST
WAUKESHA, WI 53186

DRAWINGS AND SPECIFICATIONS AS INSTRUMENTS OF SERVICE ARE THE PROPERTY OF VJS CONSTRUCTION SERVICES. THE ARCHITECT/ENGINEER ASSUMES NO RESPONSIBILITY OR LIABILITY FOR THE USE OF THESE PLANS FOR ANY PROJECT OTHER THAN SPECIFICALLY AUTHORIZED BY THEM AND SIGNED AND SEALED FOR SUCH SPECIFIC LOCATION IN THE STATE, PROVINCE, OR TERRITORY SHOWN ON THE SEAL.

ISSUANCE & REVISIONS	
03/28/25	REVISED SD SET
04/23/25	BOARD APPROVAL SET
07/14/25	DEMO PERMIT SET
7/28/25	PLAN COMMISSION

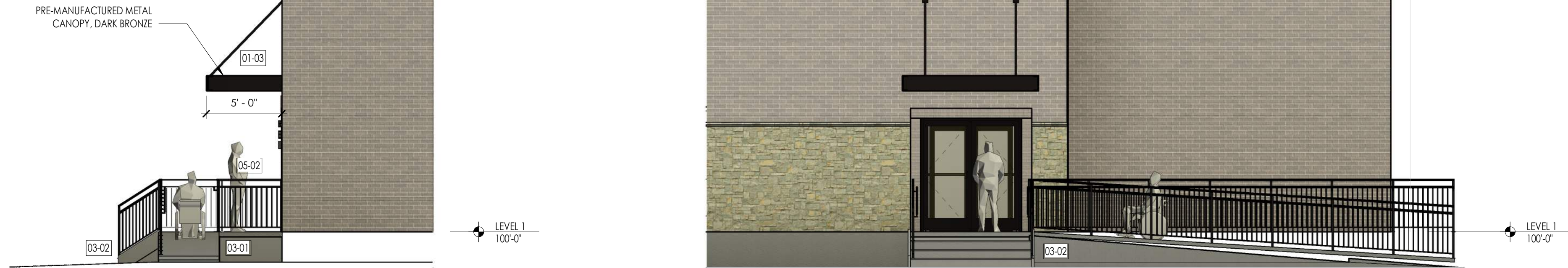
PROJECT NUMBER	8250034
PROJECT ISSUED	05/23/2025
DRAWN BY	MH/JH
CHECKED BY	KAK
SCALE	12" = 1'-0"

TITLE SHEET

T1.01

A2.01

01-03	NEW ENTRY CANOPY, REFER TO STRUCTURAL DRAWINGS FOR FURTHER DETAILS.
03-01	NEW ADA CONCRETE RAMP
03-02	NEW CONCRETE STAIRS AND STOOP
03-03	NEW CONCRETE AT ENTRY
04-04	NEW STONE VENEER, TO MATCH CARROLL STANDARD.
05-02	NEW EXTERIOR PIPE RAILING.
05-03	EXTERIOR SIGNAGE. COORDINATE WITH OWNER.
05-04	NEW PIPE RAILING, TYPICAL.
06-25	EXTERIOR GRADE SIDING, MATCH CARROLL UNIVERSITY STANDARD.
07-01	EXTERIOR ROOF COPING TO MATCH EXISTING BUILDING ROOF CORNING
07-02	40 MIL EPDM ROOF
08-01	ADA AUTOMATIC OPENER. COORDINATE WITH ELECTRICAL AND SECURITY.
08-03	STOREFRONT GLAZING WITH ANODIZED FRAME TO MATCH EXISTING EXTERIOR WINDOW FRAMES.

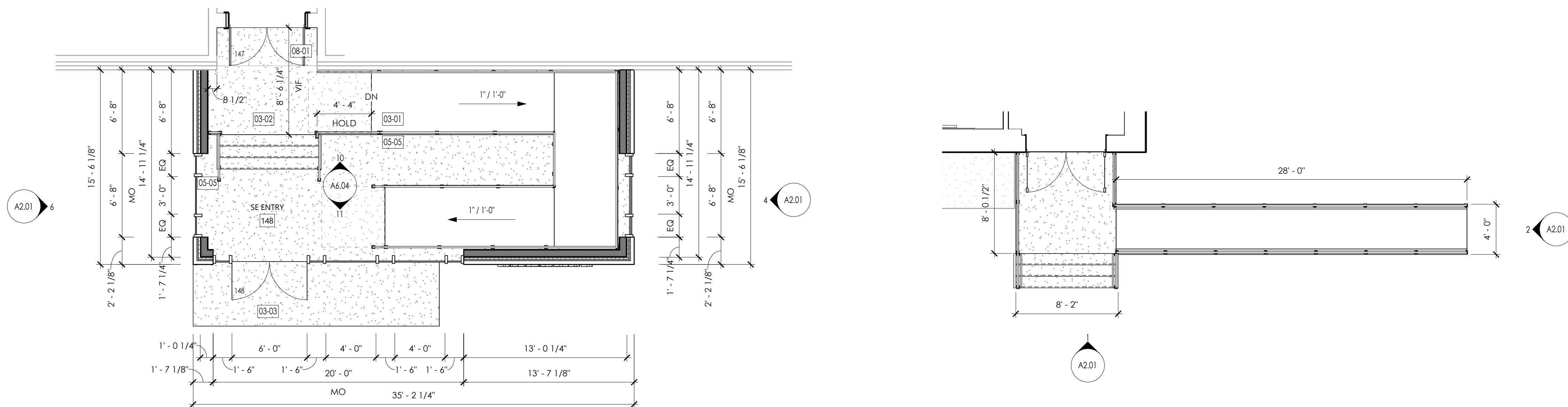


① WEST CANOPY AT TAC/CURE ENTRY
3/16" = 1'-0"



5 NEW WEST MAIN ENTRY
3/16" = 1'-0"

④ SOUTH ENTRY ELEVATION
 $3/16'' = 1'-0''$



7 LEVEL 1 (EAST)- OVERALL PLAN - CURE ENTRY RAMP
3/16" = 1'-0"

7/28/2025 3:22:48 PM



MAIN WEST ENTRY

NOT FOR CONSTRUCTION

CARROLL UNIVERSITY
RANDALL HEALTH SCIENCE BUILDOUT

114 S CHARLES ST
WAUKESHA WI 53186

DRAWINGS AND SPECIFICATIONS AS INSTRUMENTS OF SERVICE ARE THE PROPERTY OF VJS CONSTRUCTION SERVICES. THE ARCHITECT/ENGINEER ASSUMES NO RESPONSIBILITY OR LIABILITY FOR THE USE OF THESE PLANS FOR ANY PROJECT OTHER THAN SPECIFICALLY AUTHORIZED BY THEM AND SIGNED AND SEALED FOR SUCH SPECIFIC LOCATION IN THE STATE, PROVINCE, OR TERRITORY SHOWN ON THE SEAL.

ISSUANCE & REVISIONS	
03/28/25	REVISED SD SET
04/23/25	BOARD APPROVAL SET
07/14/25	DEMO PERMIT SET
7/28/25	PLAN COMMISSION

PROJECT NUMBER	8250034
PROJECT ISSUED	05/23/2025
DRAWN BY	JH
CHECKED BY	MH
SCALE	

WEST ENTRY

R1.01



7/28/2025 3:22:48 PM



TAC/CURE ENTRY

NOT FOR CONSTRUCTION

DRAWINGS AND SPECIFICATIONS AS INSTRUMENTS OF SERVICE ARE THE PROPERTY OF VJS CONSTRUCTION SERVICES. THE ARCHITECT/ENGINEER ASSUMES NO RESPONSIBILITY OR LIABILITY FOR THE USE OF THESE PLANS FOR ANY PROJECT OTHER THAN SPECIFICALLY AUTHORIZED BY THEM AND SIGNED AND SEALED FOR SUCH SPECIFIC LOCATION IN THE STATE, PROVINCE, OR TERRITORY SHOWN ON THE SEAL.

ISSUANCE & REVISIONS	
03/28/25	REVISED SD SET
04/23/25	BOARD APPROVAL SET
07/14/25	DEMO PERMIT SET
7/28/25	PLAN COMMISSION

PROJECT NUMBER	8250034
PROJECT ISSUED	05/23/2025
DRAWN BY	JH
CHECKED BY	MH
SCALE	

Carroll University – College of Health Sciences

114 S. Charles St, Waukesha

Proposed fence along South property line

Catalyst fence solutions

Vinyl fence – Newbury. Color: White





Color: Bronze

Weight: 3.0 lbs

Project:

Type:

Prepared By:

Date:

Driver Info

Type	Constant Current
120V	0.25A
208V	0.20A
240V	0.15A
277V	0.12A
Input Watts	29.4/28.4/29.7W

LED Info

Watts	30W
Color Temp	3000/4000/5000K
Color Accuracy	70 CRI
L70 Lifespan	100,000 Hours
Lumens	3540/3813/3768 lm
Efficacy	120.5/134.1/127 lm/W

Technical Specifications

Field Adjustability

Field Adjustable:

Color temperature selectable by 3000K, 4000K and 5000K

Compliance

UL Listed:

Suitable for wet locations

IESNA LM-79 & LM-80 Testing:

RAB LED luminaires and LED components have been tested by an independent laboratory in accordance with IESNA LM-79 and LM-80.

IP Rating:

Ingress protection rating of IP65 for dust and water

DLC Listed:

This product is listed by Design Lights Consortium (DLC) as an ultra-efficient premium product that qualifies for the highest tier of rebates from DLC Member Utilities. Designed to meet DLC 5.1 requirements.

DLC Product Code: PL8HS37YLUB0

Performance

Lifespan:

100,000-Hour LED lifespan based on IES LM-80 results and TM-21 calculations

Wattage Equivalency:

Equivalent to 175W Metal Halide

LED Characteristics

LEDs:

Long-life, high-efficiency, surface-mount LEDs

Electrical

Driver:

Constant Current, Class 2, 120-277V, 50/60 Hz, 120V: 0.25A, 208V: 0.20A, 240V: 0.15A, 277V: 0.12A

Dimming Driver:

Driver includes dimming control wiring for 0-10V dimming systems. Requires separate 0-10V DC dimming circuit. Dims down to 10%.

Photocell:

120-277V Integrated button photocell included.

Surge Protection:

L-N:2.5KV,L/N-GND:2.5KV

Construction

Cold Weather Starting:

The minimum starting temperature is -40°C (-40°F)

Ambient Temperature :

Max Power Temp Rating: 50°C (122°F)
Middle Power Temp Rating: 50°C (122°F)
Low Power Temp Rating: 50°C (122°F)

Housing:

Precision die-cast aluminum housing and door frame

Lens:

Polycarbonate lens

Cut Off:

Adjustable from 0° (full cutoff) to 90°. 7 settings at 15° each.

Finish:

Formulated for high durability and long-lasting color

Green Technology:

Mercury and UV free. RoHS-compliant components.

Installation

Mounting:

Hinged wiring access and conduit entries on the back, sides, top and bottom make installation a snap

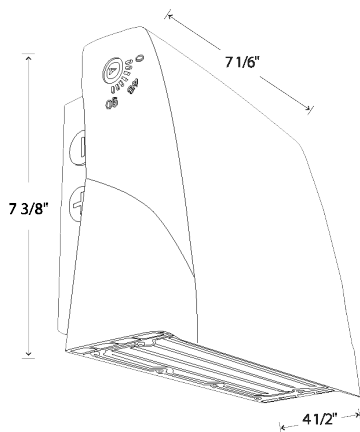
Technical Specifications (continued)

Other

5-Year Limited Warranty:

The RAB 5-year, limited warranty covers light output, driver performance and paint finish. RAB's warranty is subject to all terms and conditions found at rablighting.com/warranty.

Dimensions



Features

- Selectable CCT
- Adjustable cutoff
- Integrated photocell
- 0-10V dimming, standard

Ordering Matrix

Family	Wattage	Style
SLIM17FA	30	ADJ
15 = 15W 30 = 30W		
ADJ = Angle Adjustable		



Color: Bronze

Weight: 3.0 lbs

Project:

Type:

Prepared By:

Date:

Driver Info

Type	Constant Current
120V	0.13A
208V	0.07A
240V	0.06A
277V	0.05A
Input Watts	14.2/14/14.2W

LED Info

Watts	15W
Color Temp	3000/4000/5000K
Color Accuracy	70 CRI
L70 Lifespan	100,000 Hours
Lumens	1761/1904/1852 lm
Efficacy	124/136.2/130.3 lm/W

Technical Specifications

Field Adjustability

Field Adjustable:

Color temperature selectable by 3000K, 4000K and 5000K

Compliance

UL Listed:

Suitable for wet locations

IESNA LM-79 & LM-80 Testing:

RAB LED luminaires and LED components have been tested by an independent laboratory in accordance with IESNA LM-79 and LM-80.

IP Rating:

Ingress protection rating of IP65 for dust and water

DLC Listed:

This product is listed by Design Lights Consortium (DLC) as an ultra-efficient premium product that qualifies for the highest tier of rebates from DLC Member Utilities. Designed to meet DLC 5.1 requirements.

DLC Product Code: PL0MVJOV62Q3

Performance

Lifespan:

100,000-Hour LED lifespan based on IES LM-80 results and TM-21 calculations

Wattage Equivalency:

Equivalent to 70W Metal Halide

LED Characteristics

LEDs:

Long-life, high-efficiency, surface-mount LEDs

Electrical

Driver:

Constant Current, Class 2, 120-277V, 50/60 Hz, 120V: 0.13A, 208V: 0.07A, 240V: 0.06A, 277V: 0.05A

Dimming Driver:

Driver includes dimming control wiring for 0-10V dimming systems. Requires separate 0-10V DC dimming circuit. Dims down to 10%.

Photocell:

120-277V Integrated button photocell included.

Surge Protection:

L-N:2.5KV,L/N-GND:2.5KV

Construction

Cold Weather Starting:

The minimum starting temperature is -40°C (-40°F)

Ambient Temperature :

Max Power Temp Rating: 50°C (122°F)
Middle Power Temp Rating: 50°C (122°F)
Low Power Temp Rating: 50°C (122°F)

Housing:

Precision die-cast aluminum housing and door frame

Lens:

Polycarbonate lens

Cut Off:

Adjustable from 0° (full cutoff) to 90°. 7 settings at 15° each.

Finish:

Formulated for high durability and long-lasting color

Green Technology:

Mercury and UV free. RoHS-compliant components.

Installation

Mounting:

Hinged wiring access and conduit entries on the back, sides, top and bottom make installation a snap

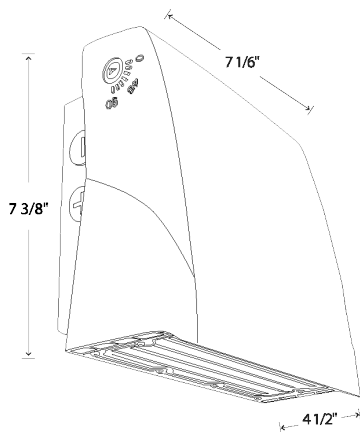
Technical Specifications (continued)

Other

5-Year Limited Warranty:

The RAB 5-year, limited warranty covers light output, driver performance and paint finish. RAB's warranty is subject to all terms and conditions found at rablighting.com/warranty.

Dimensions



Features

- Selectable CCT
- Adjustable cutoff
- Integrated photocell
- 0-10V dimming, standard

Ordering Matrix

Family	Wattage	Style
SLIM17FA	15	ADJ
15 = 15W ADJ = Angle Adjustable 30 = 30W		