

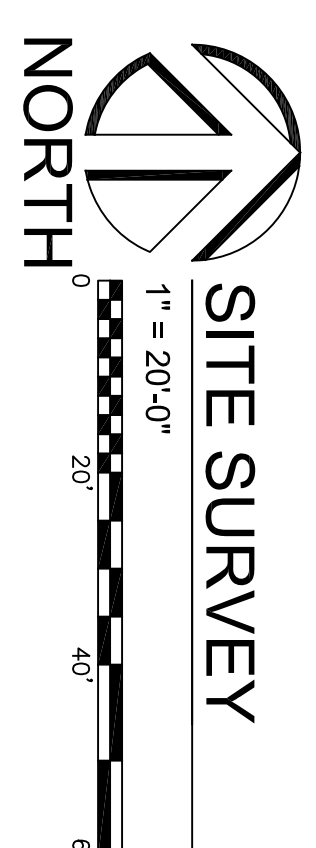
CSM 5080

1364999-002

LOT 2

Benchmark — 18.59 — RR spike in PP#87—06539
N. side STH 59, ~900' E. of CTH X

Benchmark — 27.577 — RR spike in PP#72—5300
NE corner STH 59 & CTH X

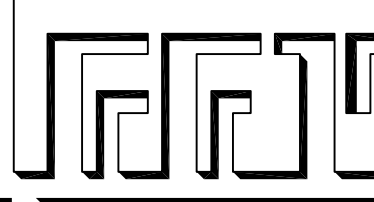


SITE SURVEY

1:

CS

A NEW FIRE STATION NO. 3 FOR THE CITY OF WAUKESHA
NORTHEAST CORNER OF S.T.H. "59" (LES PAUL PARKWAY) AND C.T.H. "X" (GENESEE ROAD)
WAUKESHA, WISCONSIN



FISCHER-FISCHER-THEIS, INC. ARCHITECTS • ENGINEERS • PLANNERS
S22 W22660 BROADWAY • WAUKESHA, WISCONSIN 53186-8199
(262) 547-6969 • FAX (262) 547-6960 • E-MAIL: fft@fftarchitects.com

PRELIMINARY DRAWING
NOT FOR CONSTRUCTION
DATE PRINTED: 11/14/2016

REV	BY	DATE	TYPE
1	DD	XXXXXX	DD

PROJECT NO. **13055**
SHEET NO. **SV101**